



# Department of Administrative Services

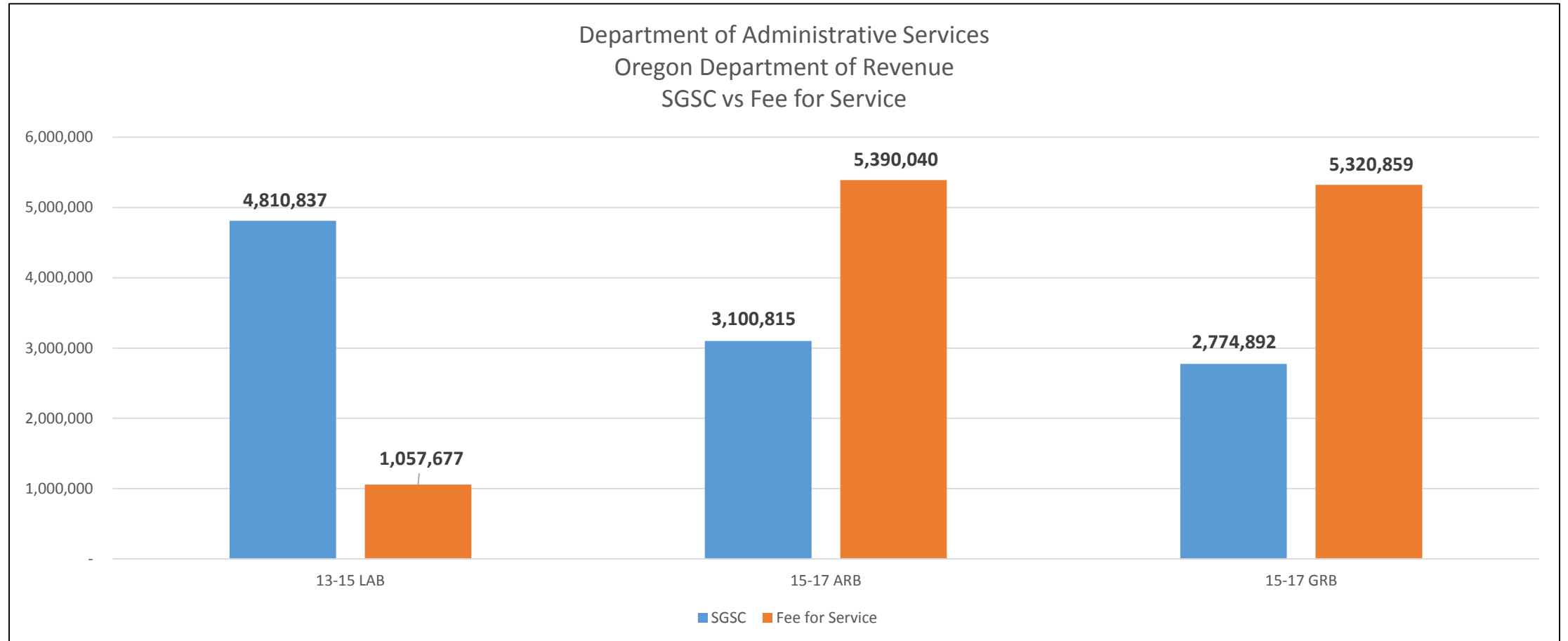
---

**Joint Committee on Ways and Means  
General Government Subcommittee, May 12, 2015  
Phase II – Part II large agency rates and assessments**

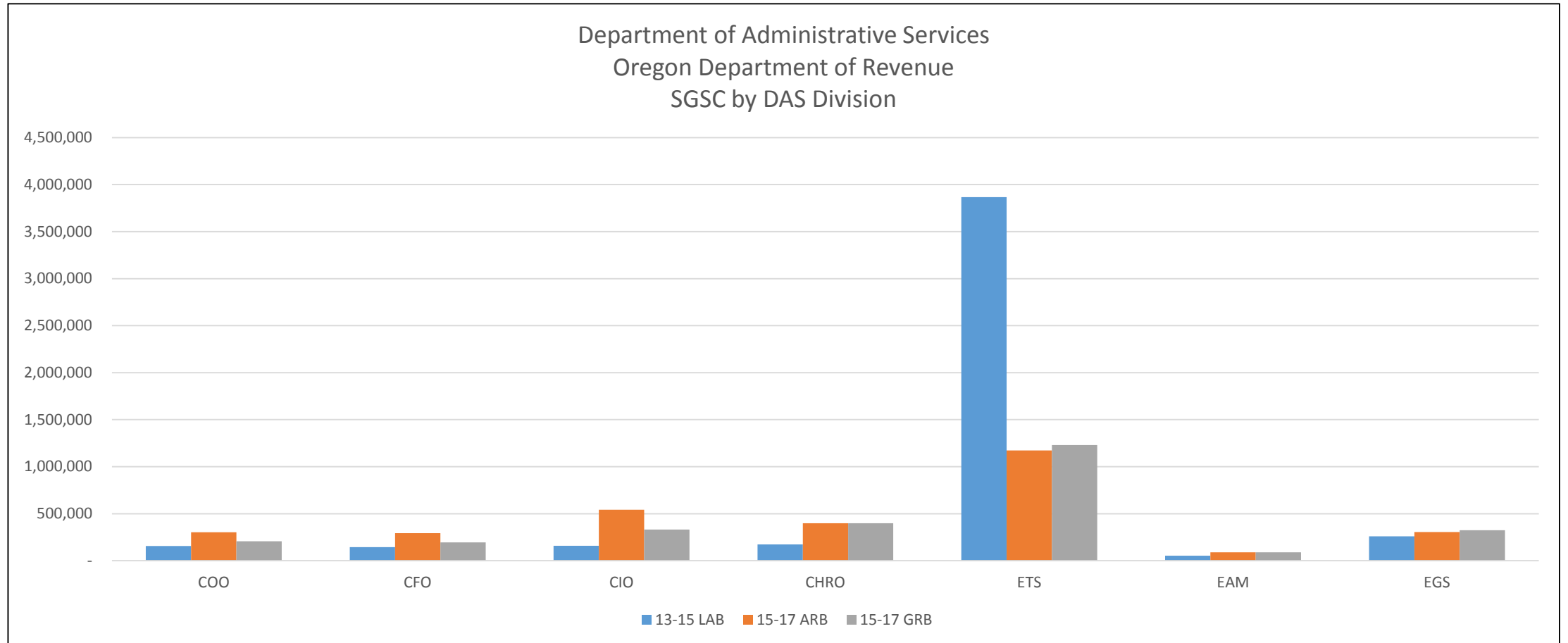
# Common Themes

- First biennium with CUB-driven rates and new methodology
- These three agencies, (Revenue, Consumer and Business Services and Transportation) were all part of the original “big 12” – the first agencies consolidated in the data center. The “big 12” were historically paying for most of their IT costs as an assessment.
- Under the new methodology, costs are shifted from an assessment (State Government Service Charge) to charges for service.
- Overall costs increase as discussed in prior presentations.

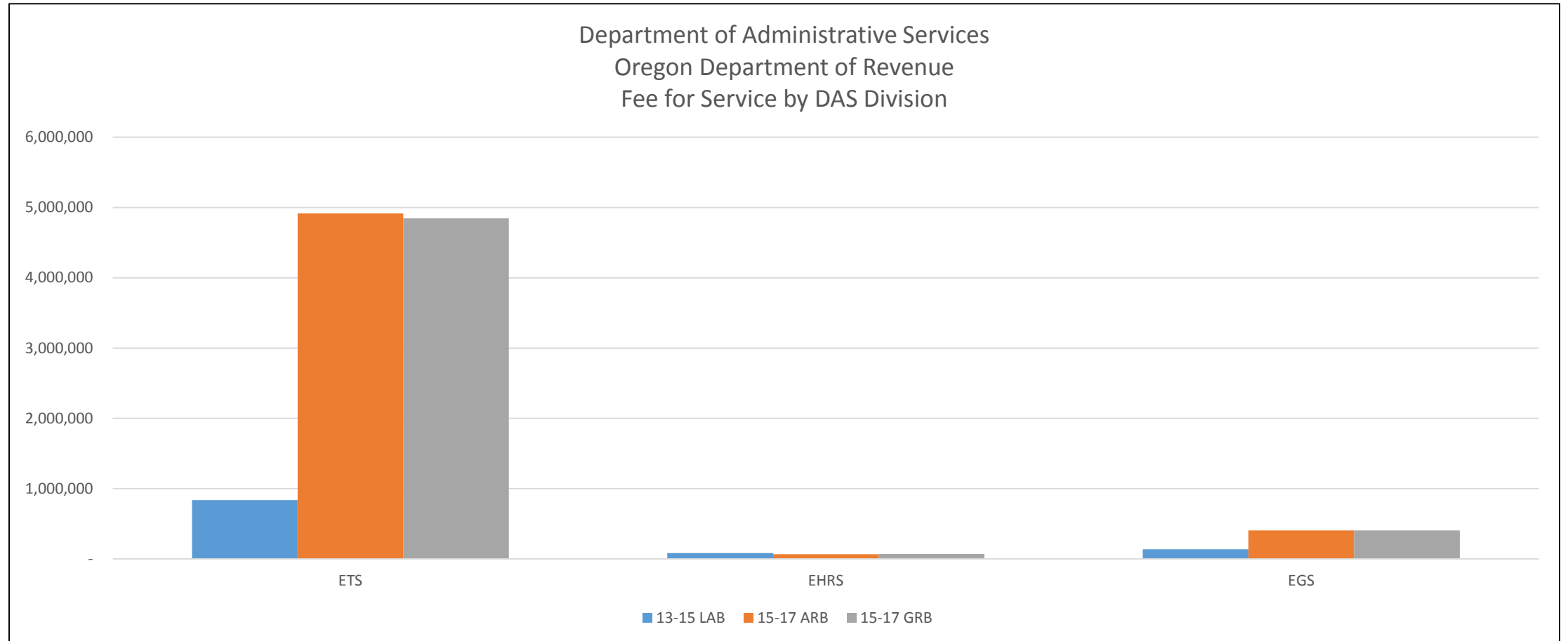
# Oregon Department of Revenue



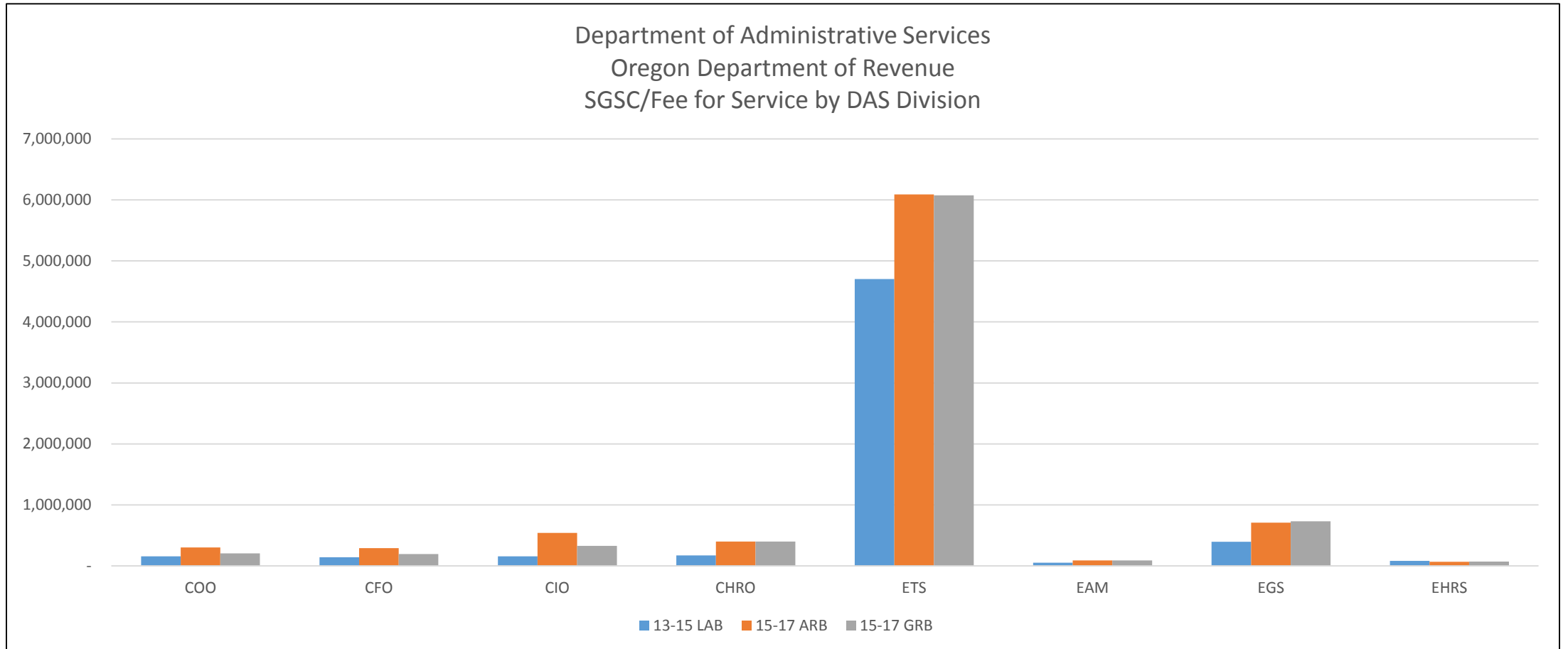
# Oregon Department of Revenue State Government Service Charge



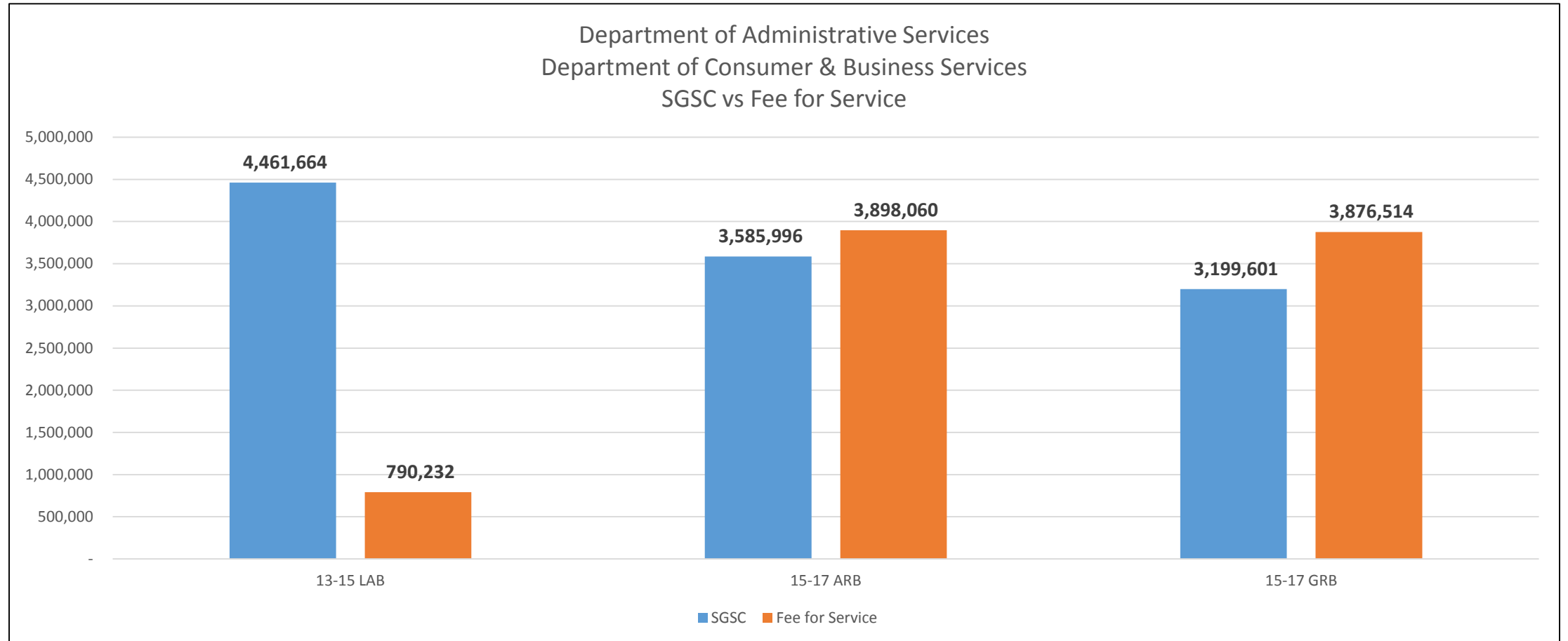
# Oregon Department of Revenue Fee for Service



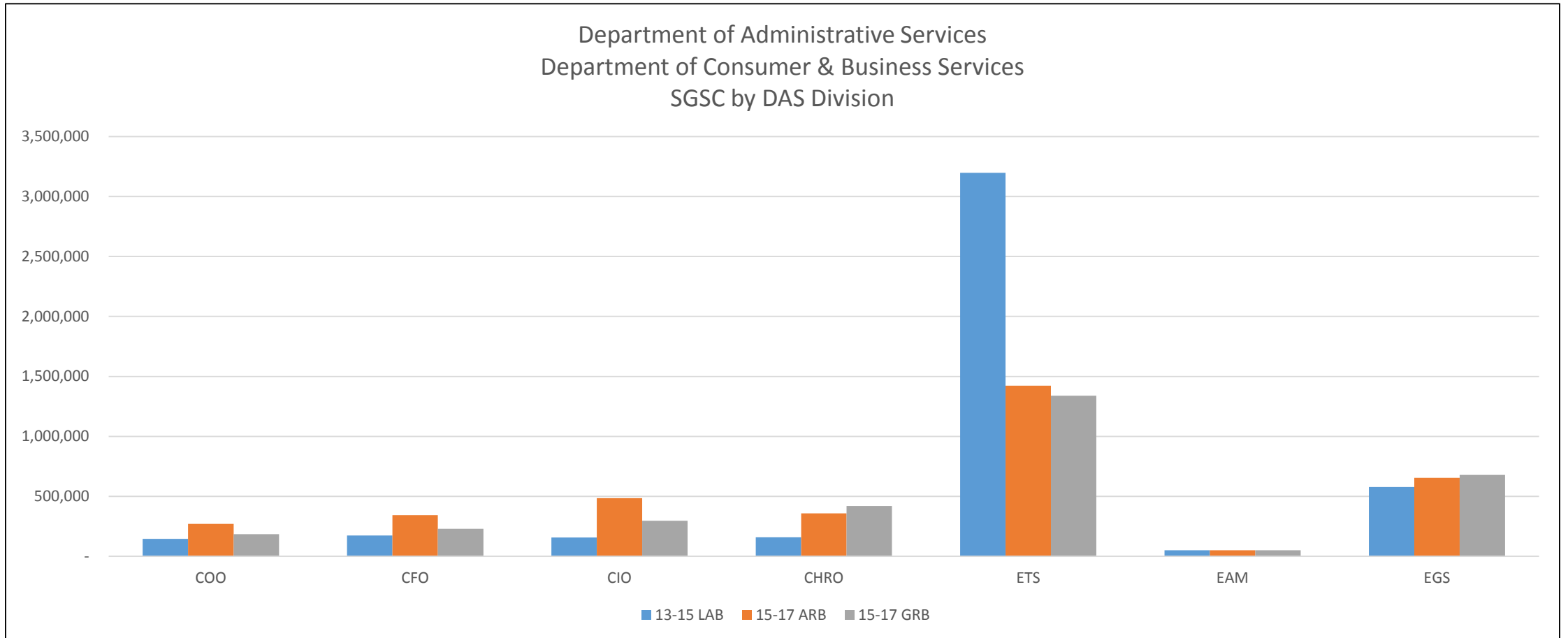
# Oregon Department of Revenue Total Costs by DAS Division



# Department of Consumer & Business Services

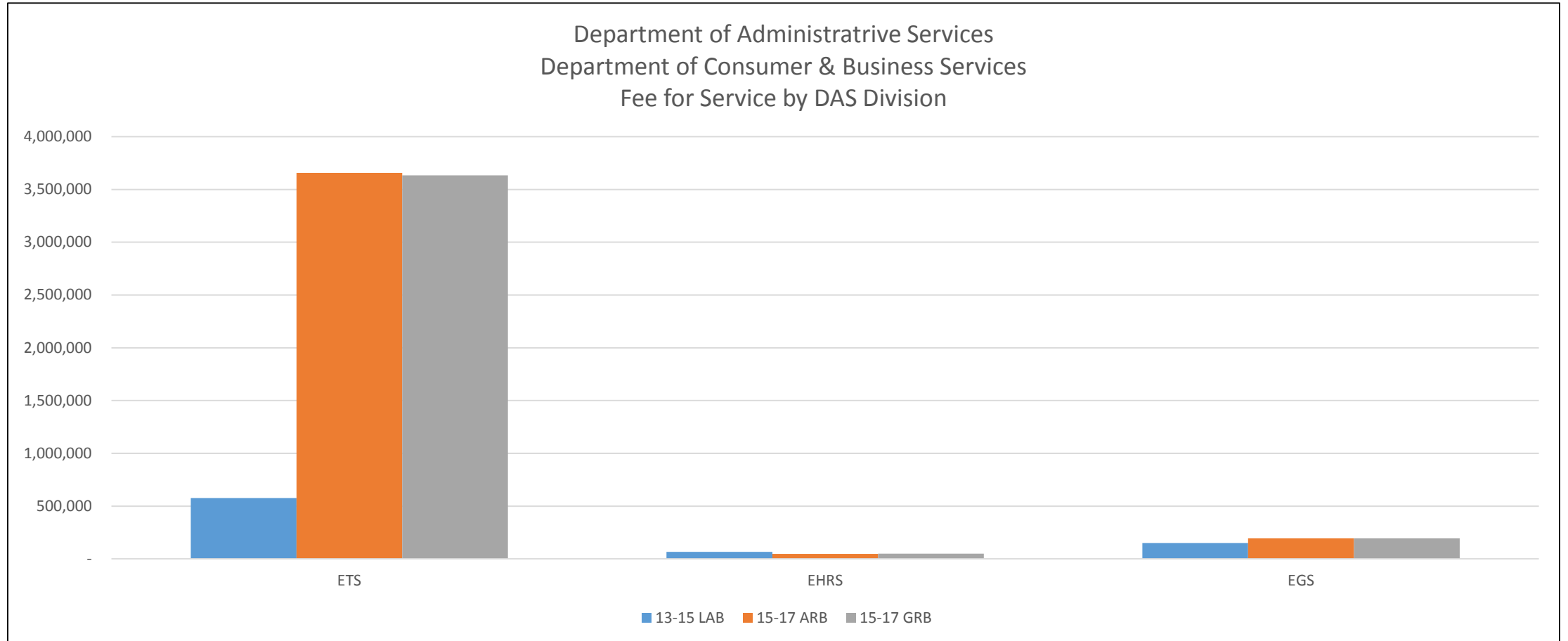


# Department of Consumer & Business Services State Government Service Charge

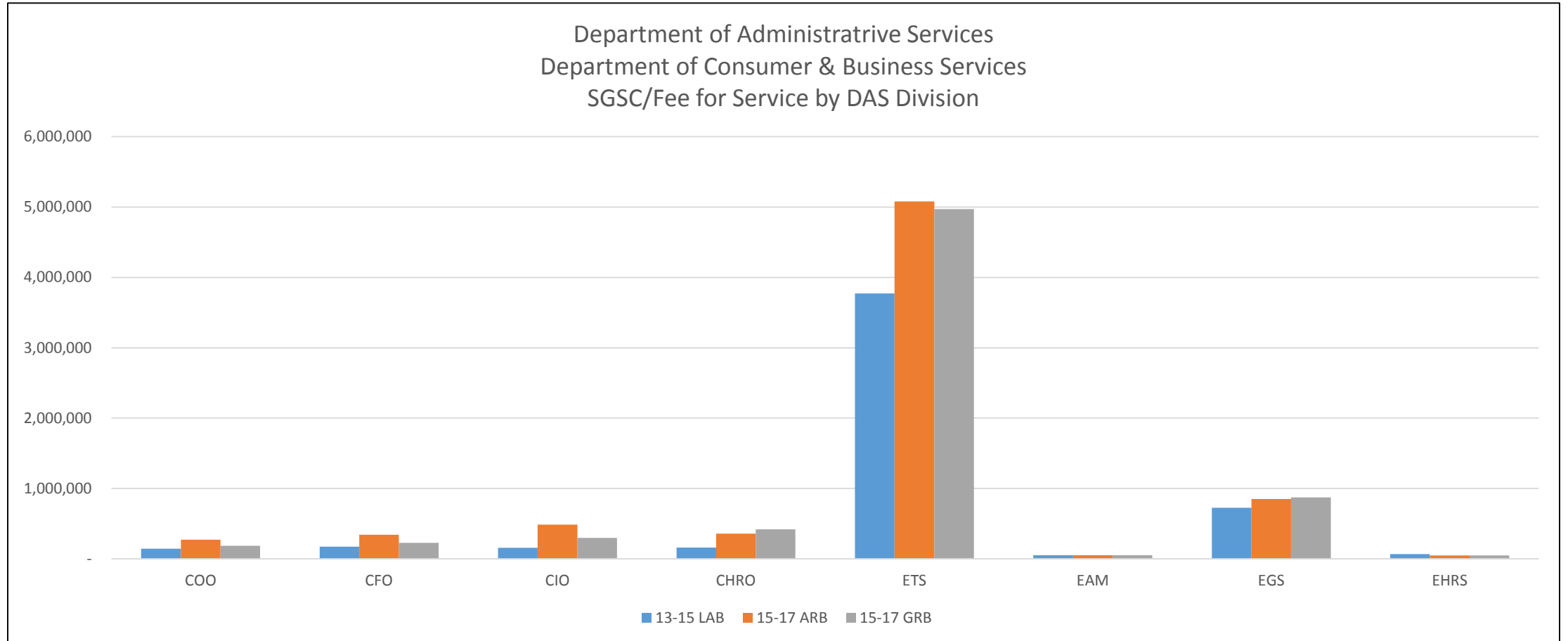




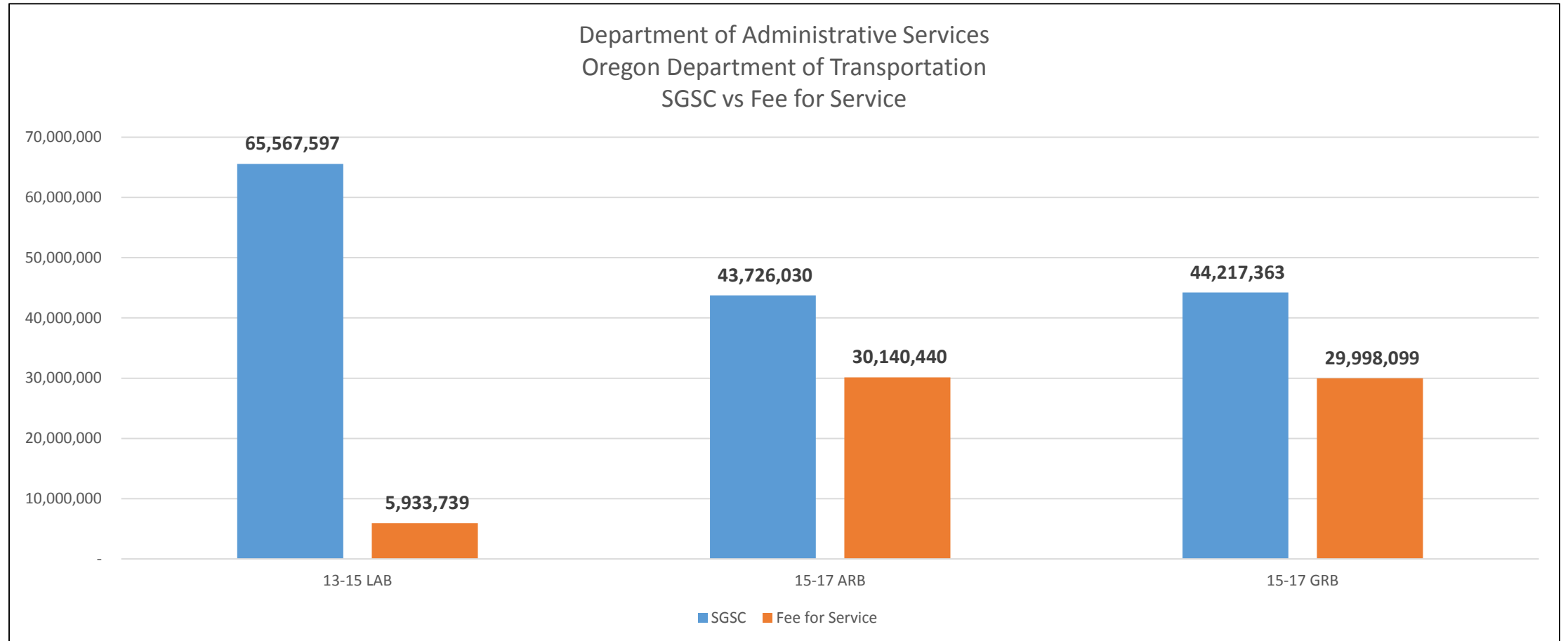
# Department of Consumer & Business Services Fee for Service



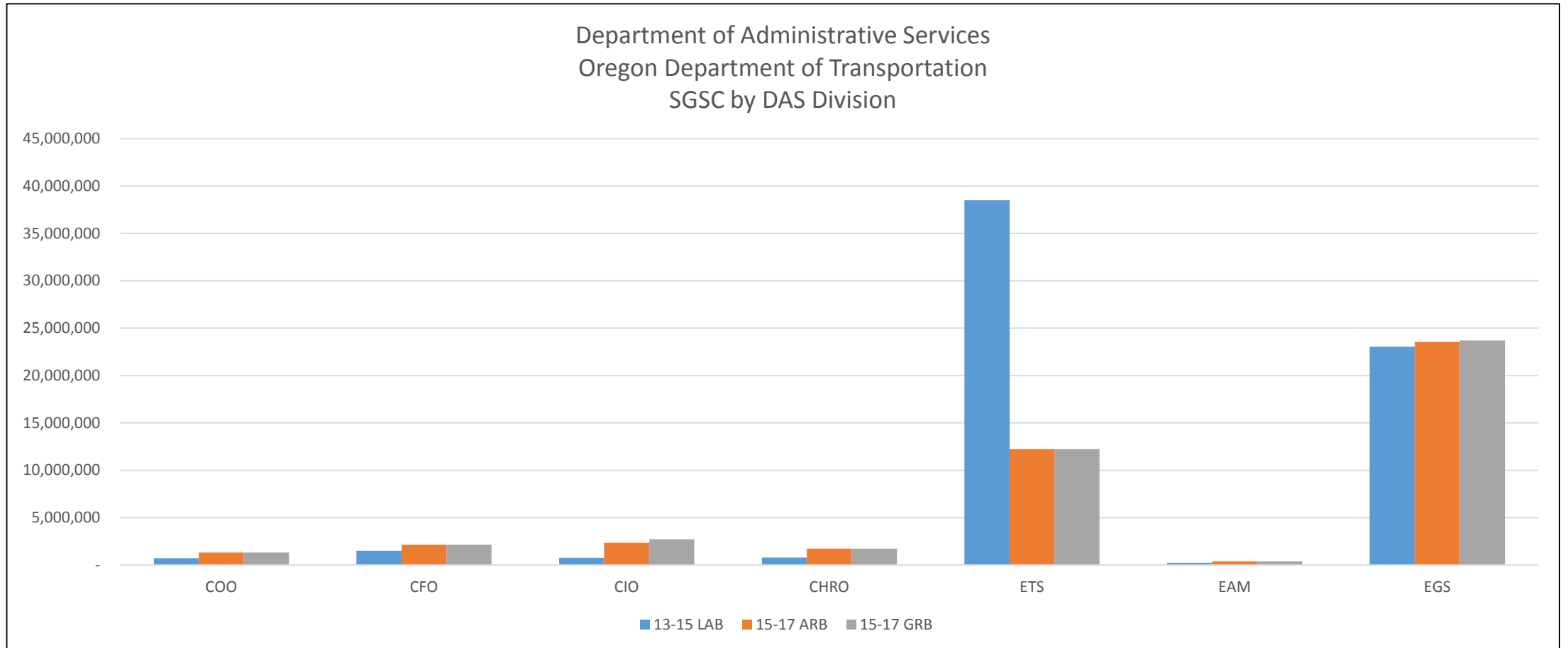
# Department of Consumer & Business Services Total Costs by DAS Division



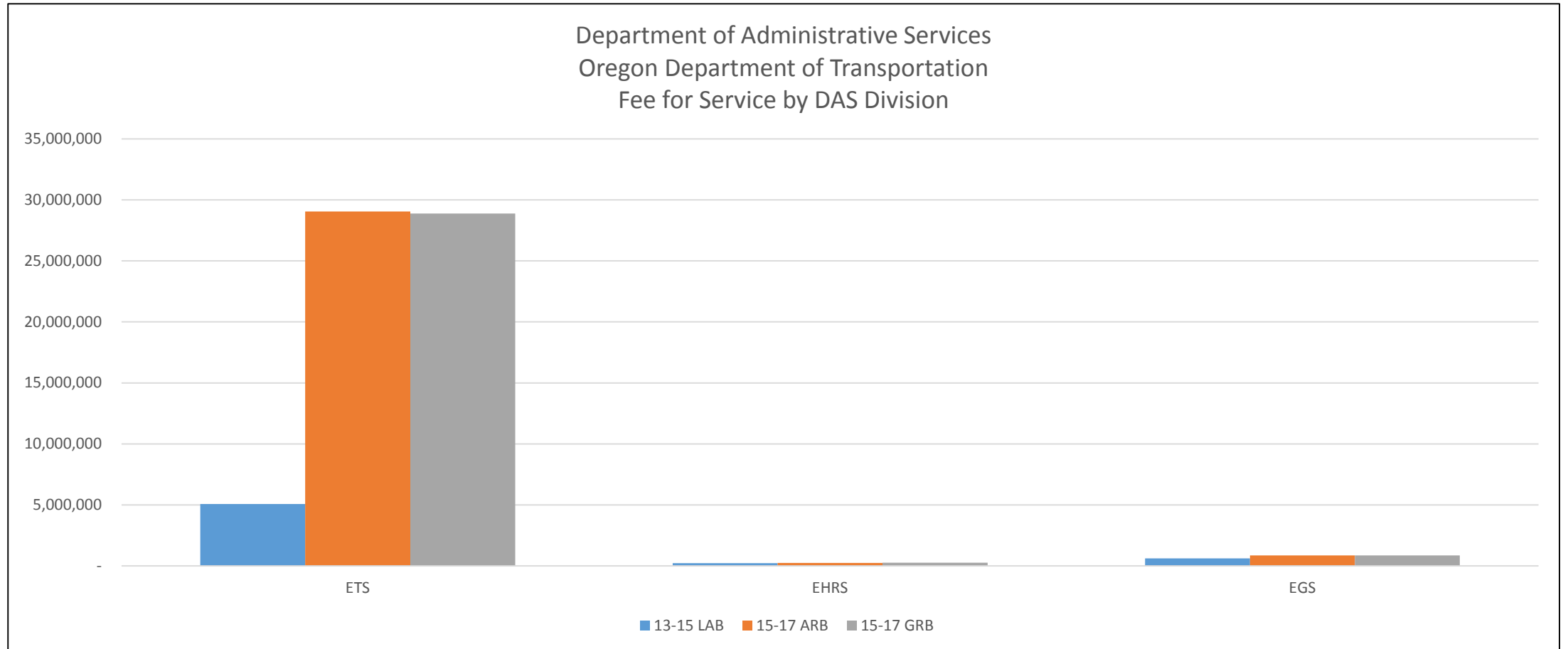
# Oregon Department of Transportation



# Oregon Department of Transportation State Government Service Charge



# Oregon Department of Transportation Fee for Service



# Oregon Department of Transportation Total Costs by DAS Division

