

2016 Jefferson County Courthouse



Jefferson County

- Requesting \$2.5 million (Q-bonds) for Courthouse project.
- Received \$4.0 million in 2014
- \$14,900,000 total project cost

State Funding	\$6,500,000 (includes the \$2.5 million request)
<u>County Funding</u>	<u>\$8,400,000</u>
TOTAL	\$14,900,000



Jefferson County

- Population: 22,205
- Forecasted population to increase 43% by 2050 (Office of Economic Analysis)
- Is not an O&C revenue county



Jefferson County

- Jefferson County Circuit Court collected \$833,135 (CY 2013)
- Property tax rate: \$3.56/\$1,000 (10th highest in Oregon)
- Assessed (taxable) valuation (FY 13-14) per capita: \$65,932 (6th lowest in Oregon)



Jefferson County

- FY 13/14 property tax (general fund) collection: \$4,763,083
- Federal Payment-In-Lieu-of-Taxes (PILT) receipts (FFY 14): \$331,861
 - Crook County: \$653,487
 - Deschutes County: \$1,971,540



State Funding	\$6,500,000 (includes the \$2.5 million request)
<u>County Funding</u>	<u>\$8,400,000</u>
TOTAL	\$14,900,000

Other project expenses not covered by state match (estimates):

\$500,000 Demolish 1961 Courthouse

\$325,000 Remodel of Goodson Building

Bond Sale

\$8,900,000

“Full Faith and Credit” – Not a property tax increase

County Received a “AA-” Rating from Standard and Poors

30 Year Annual Payments @ \$495,000

True Interest Cost @ 3.6%

1961 Jefferson County Courthouse



1961 Jefferson County Courthouse



1961 Jefferson County Courthouse

- Located in the Willow Creek floodway.
- The courthouse has undergone two shoring/remodels (1984 and 2002) in attempts to fix structural deficiencies.
- In 2008, Walker Structural Engineering, LLC identified “severely insufficient” structural conditions of the building to withstand a seismic event. Particularly, the bracing of the concrete walls to the roof trusses are inadequately spaced and are “minimally connected at the top and bottom.”

1961 Jefferson County Courthouse

- Two Courtrooms
- Central Hallway – Mixes inmates, witnesses, victims, victim's family, accused's family, attorneys, and court staff.
- Central Bathrooms. Judges in courtroom #2 encounter family members of the person they just sentenced in the bathroom.
- One Jury Room. Bathrooms directly adjacent to table. Not ADA.

New Courthouse Planning

2005-06 – Started saving for future Courthouse.

2008 – Space needs assessment of “unified building” - 99,186 Sq Ft on 4.64 acres.

2008 – Statewide Courthouse Assessment – Jefferson County Rank 37th of 48.

2009 – County Site evaluation (reviewed 4 locations)

2009 – State Identifies Jefferson County Courthouse as a “facility replacement” with an estimated cost of \$25,000,000.

2010 – City of Madras offers land adjacent to new City Hall for Courthouse.

2011 – “Courthouse Savings Account” balance is \$2.1 million.

New Courthouse Planning

2012 – State creates the Courthouse Capital Improvement Trust Fund

2013 – City donates property for Courthouse.

2013 – State passes bill to allow a 50/50 match for County Courthouses.

2013 – County reduces footprint (35,000 sq ft) for building to only house Courts and District Attorney.

2014 – County purchases adjacent building (9,000 sq ft) for Adult Probation & Juvenile Justice offices.

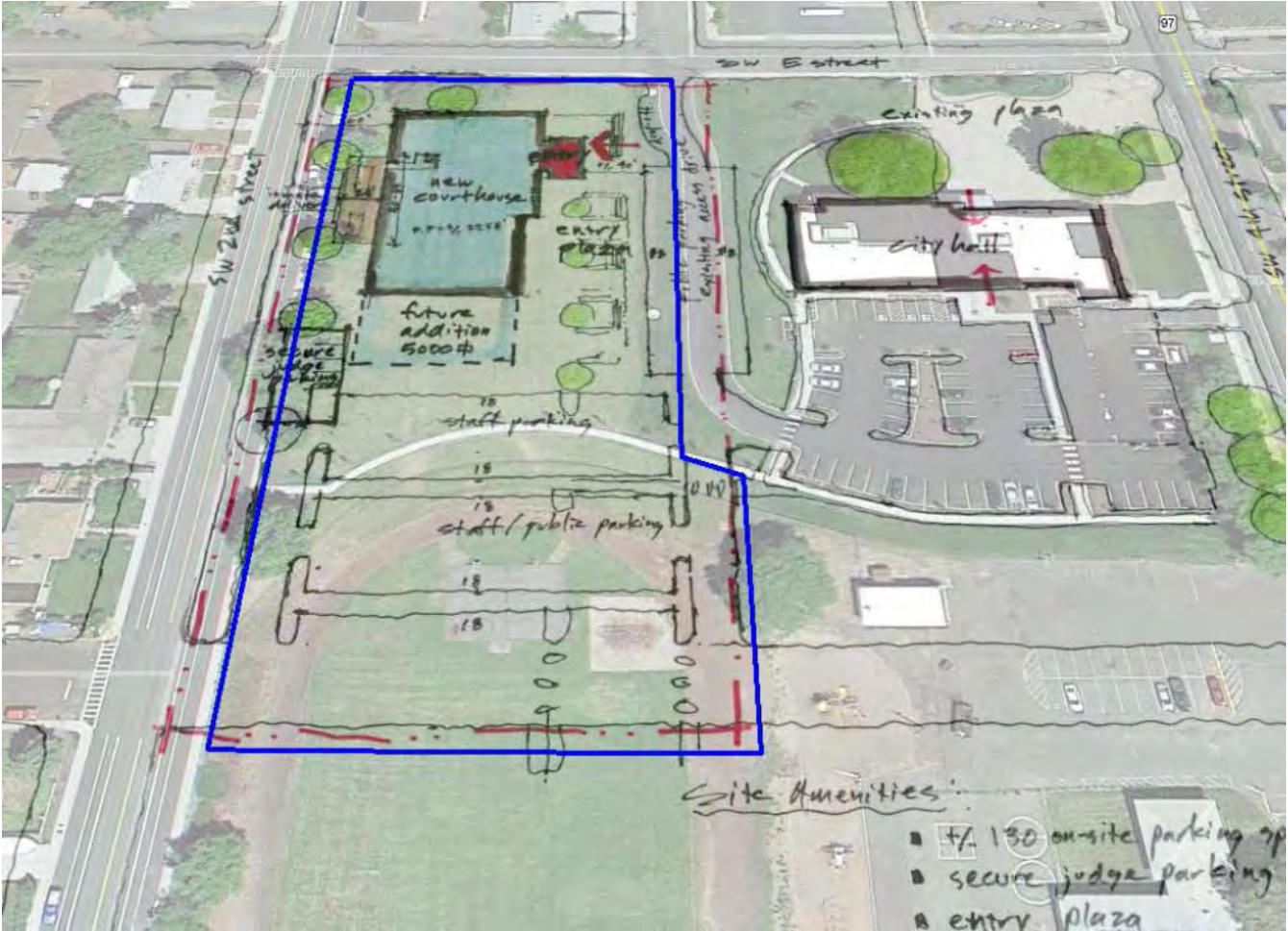
2014 – County requested \$5.5 million. Received \$4.0 million

2014 – Final Design at 30,800 sq. ft. project cost \$14.9 million

2014 – County bonds for \$8.9 million & request an additional \$2.5 million for the State of Oregon to achieve the 50/50 cost share.

New Courthouse Planning

2014 – County purchases 1.1 Acres of Westside Elementary School Property



New Courthouse Project Timeline

April 27th – Construction begins

August 2016 – Building Occupied

2016 Jefferson County Courthouse



2016 Jefferson County Courthouse

Three Separate Security Zones

- Public
- In-custody Defendants
- Court Staff, Judges, and Jurors

Three Jury Courtrooms – Expansion to fourth courtroom

Four Judicial Offices – Expansion to fourth office

Two Jury Deliberation Rooms

Four Attorney/Client Conference Rooms



SERVICE LOBBY LOOKING NE



SERVICE LOBBY LOOKING EAST



SERVICE LOBBY LOOKING SE



COURTROOM 3 LOOKING EAST



SERVICE LOBBY LOOKING NW



SERVICE LOBBY LOOKING SOUTH



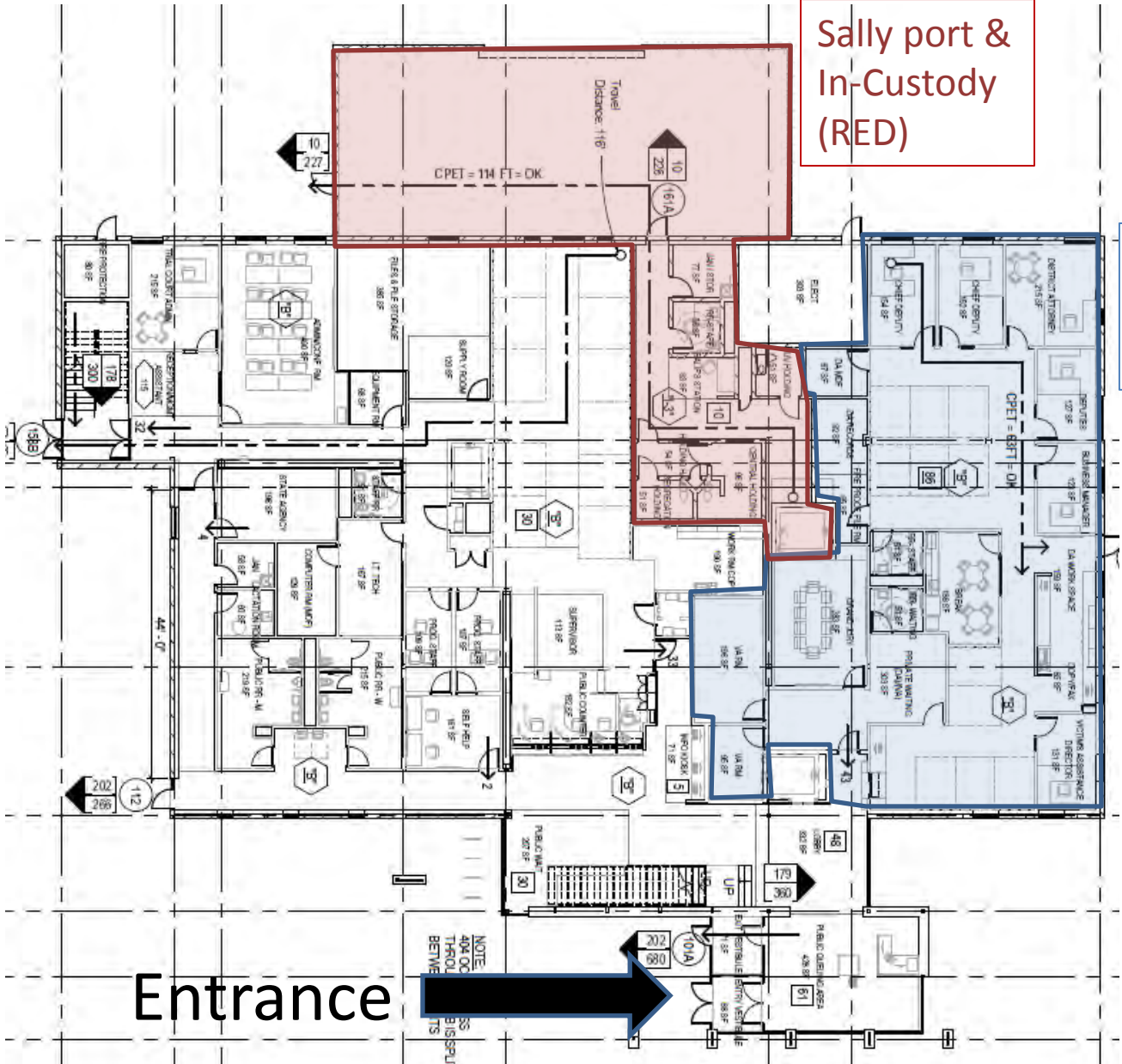
COURTROOM 3 LOOKING WEST (FUTURE PHASE)



COURTROOM 3 ENTRY



1st Floor



Sally port & In-Custody (RED)

District Attorney (BLUE)

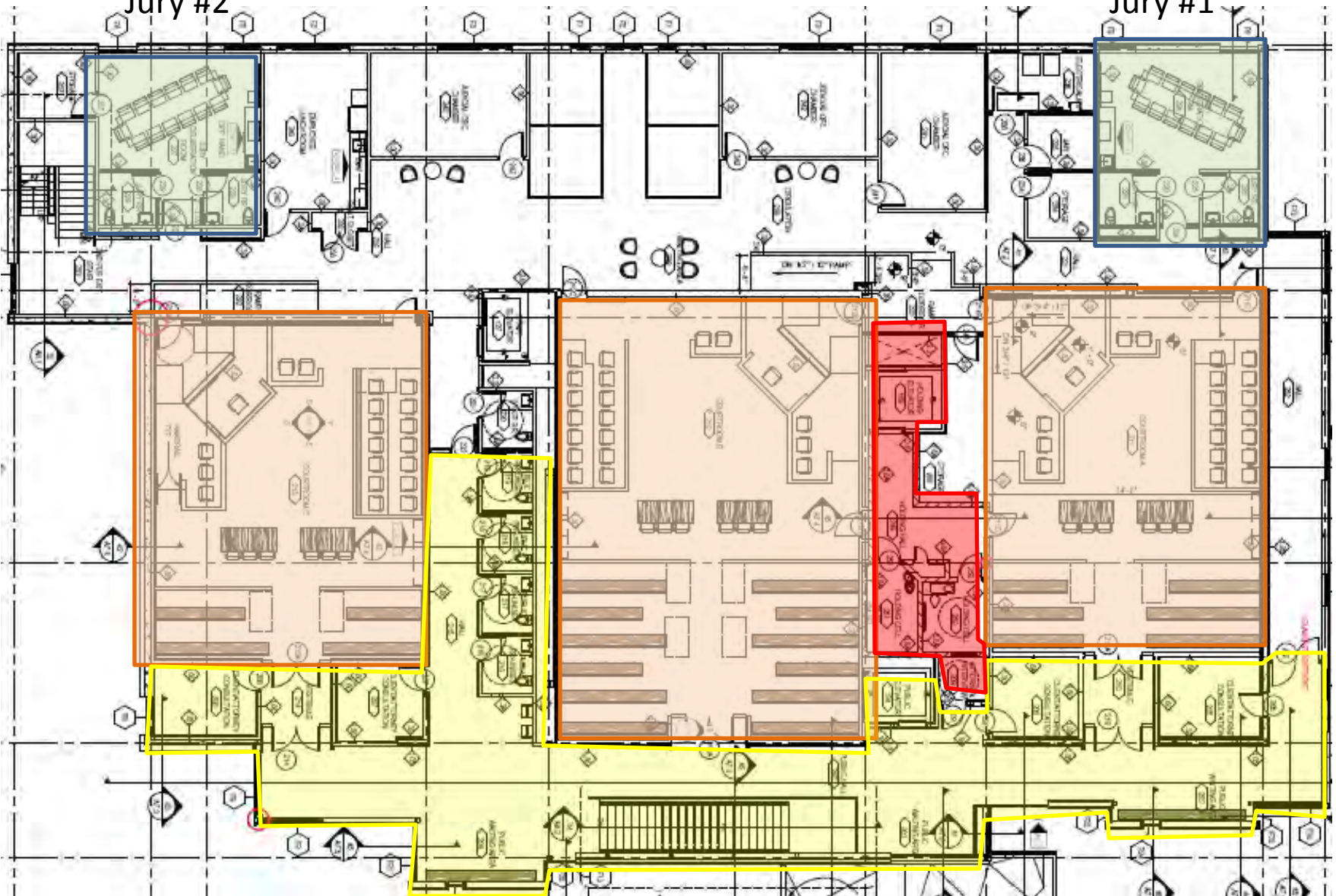
Entrance

NOTE:
404.00
THRU
BIS/SP/UTS

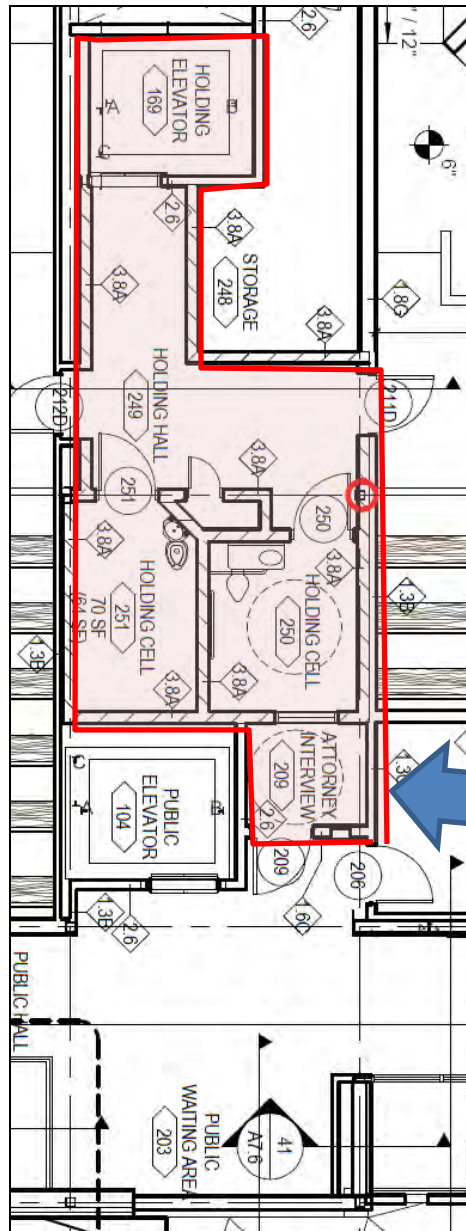
2nd Floor

Jury #2

Jury #1



2016 Jefferson County Courthouse



Attorney/In-Custody
interview access off of
public hallway

2016 Jefferson County Courthouse

