

Port of Portland Aviation Overview



PORTLAND INTERNATIONAL AIRPORT

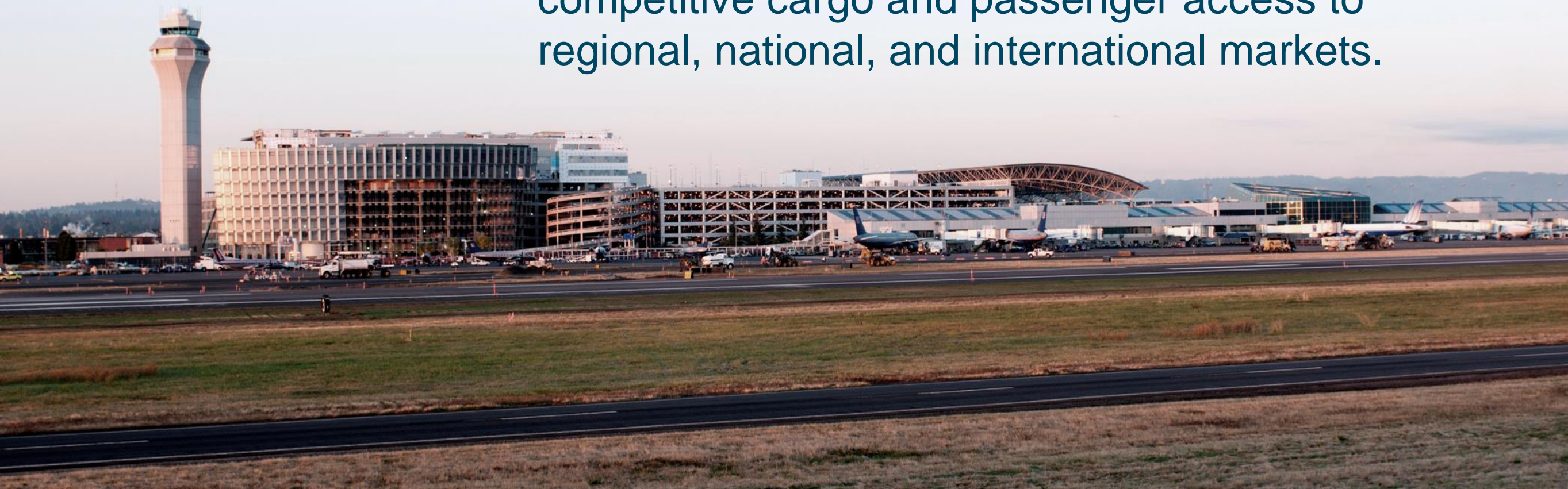
Daren Griffin
General Manager, Airport Operations

Port of Portland Operations



Aviation Mission

To operate, maintain, and promote a sustainable airport system (Portland International, Hillsboro, and Troutdale Airports) that satisfies the air transportation needs of our customers by providing competitive cargo and passenger access to regional, national, and international markets.



Portland International Airport Overview

- Annual Passengers = 15.9 million in 2014 – Record High
- Passenger Airlines = 14 (Including nonstop service to Asia & Europe)
- Cargo Airlines = 8 (Regional hub for FedEx & UPS)
- Annual Landing's & Take Offs = 216,250
- Runways = 3 (3,300 acres)
- Airport Employees = 10,200 (16,600 regional jobs)
- Generates \$86.8 million in state and local taxes
- Regional Business Revenue = \$3.9 billion
- “America’s Best Airport” – Travel + Leisure, 2013, 2014
- “Nation’s Best Airport” – Condé Nast Traveler, 2006, 2007, 2008, 2010

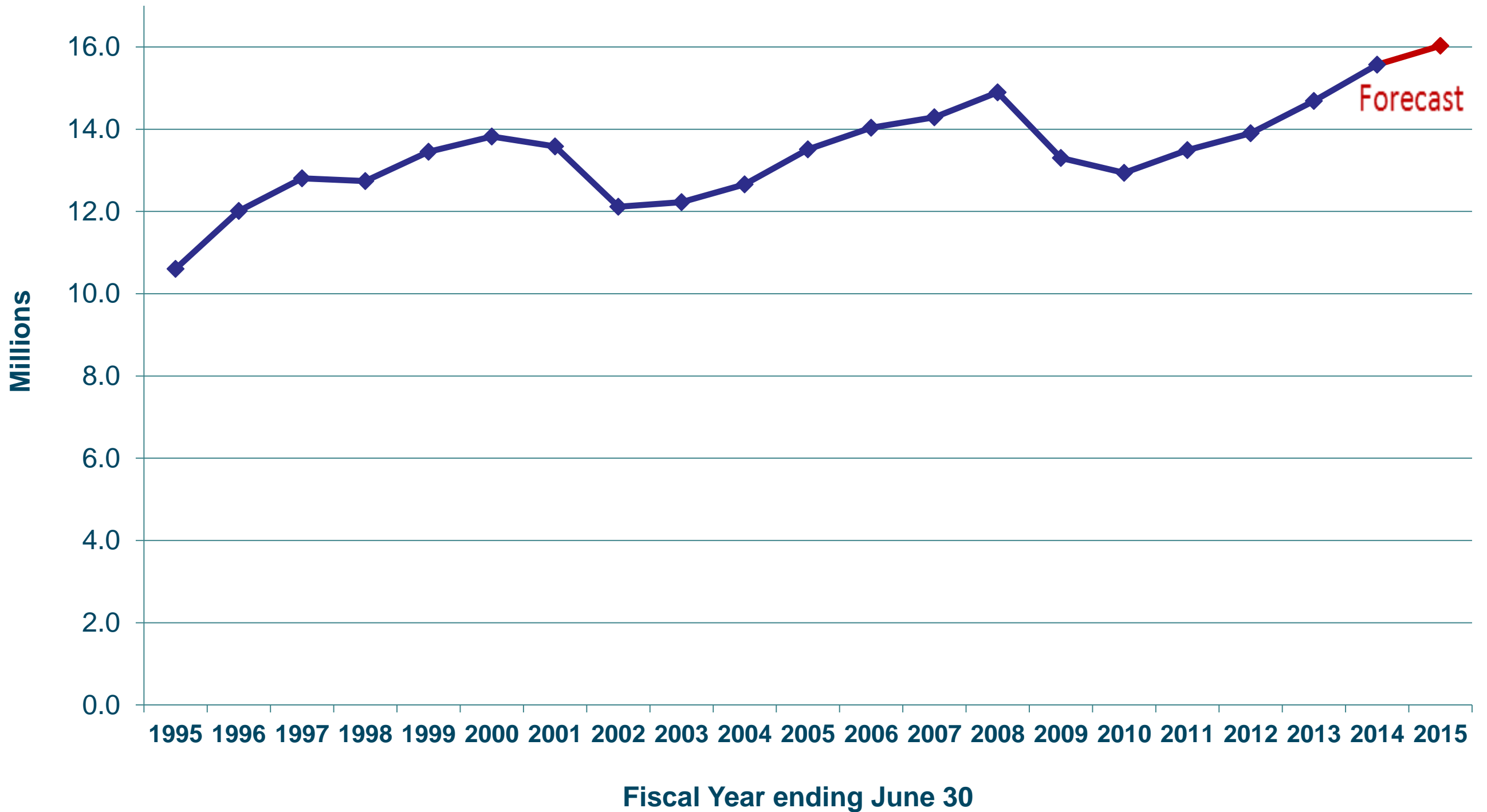


Portland International Airport Overview Cont.

- PDX provides nonstop service to 52 domestic destinations
- Current passenger growth rate 2.1%
- New international service will provide additional lift during the peak summer season when our demand for European travel more than doubles
- Estimating an additional 100,000 more international passengers this year or close to 600,000, a 20% increase
- Direct service to 9 international markets: Vancouver BC, Narita, Amsterdam, Guadalajara, Puerto Vallarta, Los Cabos, Calgary, Reykjavik, Frankfurt
- In 2014 Total cargo tons: 228,564, up 4.2%



Total Passengers – Key Business Driver



Hillsboro Airport (HIO)

- Busiest airport in Oregon with 221,932 operations in CY 2014
- Business aviation focus with four Fixed Base Operators (FBOs)
- Intel air shuttle, Nike, and Columbia Sportswear corporate aircraft base
- Served by Customs and Border Protection fee-based facility
- Hillsboro Aviation is one of the largest combined fixed-wing and helicopter flight training schools in the western United States
- Supports 937 jobs, 436 direct
- Generates about \$5.1 million in state and local taxes



Hillsboro Airport (HIO) Third Runway

- New Parallel Runway opened April 30th
- Total Project Budget: \$16.7M. FAA Grant \$9.65M; Connect Oregon \$4M
- Measures 60-feet wide and 3,600-feet long



Troutdale Airport (TTD)

- Air traffic control towered airport with 100,415 operations in CY 2014
- One Fixed Base Operator
- Ranked Third Busiest Airport in Oregon
- Two flight training schools
- Supports 253 jobs, 61 direct
- Generates about \$1.1 million in state and local taxes



Troutdale Airport (TTD) Master Plan

- Last Master Plan completed 2004 and markets are changing
- Soliciting broad community participation and input about the future role of the airport
- Desire to improve the financial performance of TTD
- Possibility of developing portions of airport land for commercial or industrial uses
- Completed the analysis of aviation and land-use demand for the 20 year planning horizon
- PAC will present the Port's Executive Director with recommendations for a long-term development plan
- Project completion in the spring of 2016

