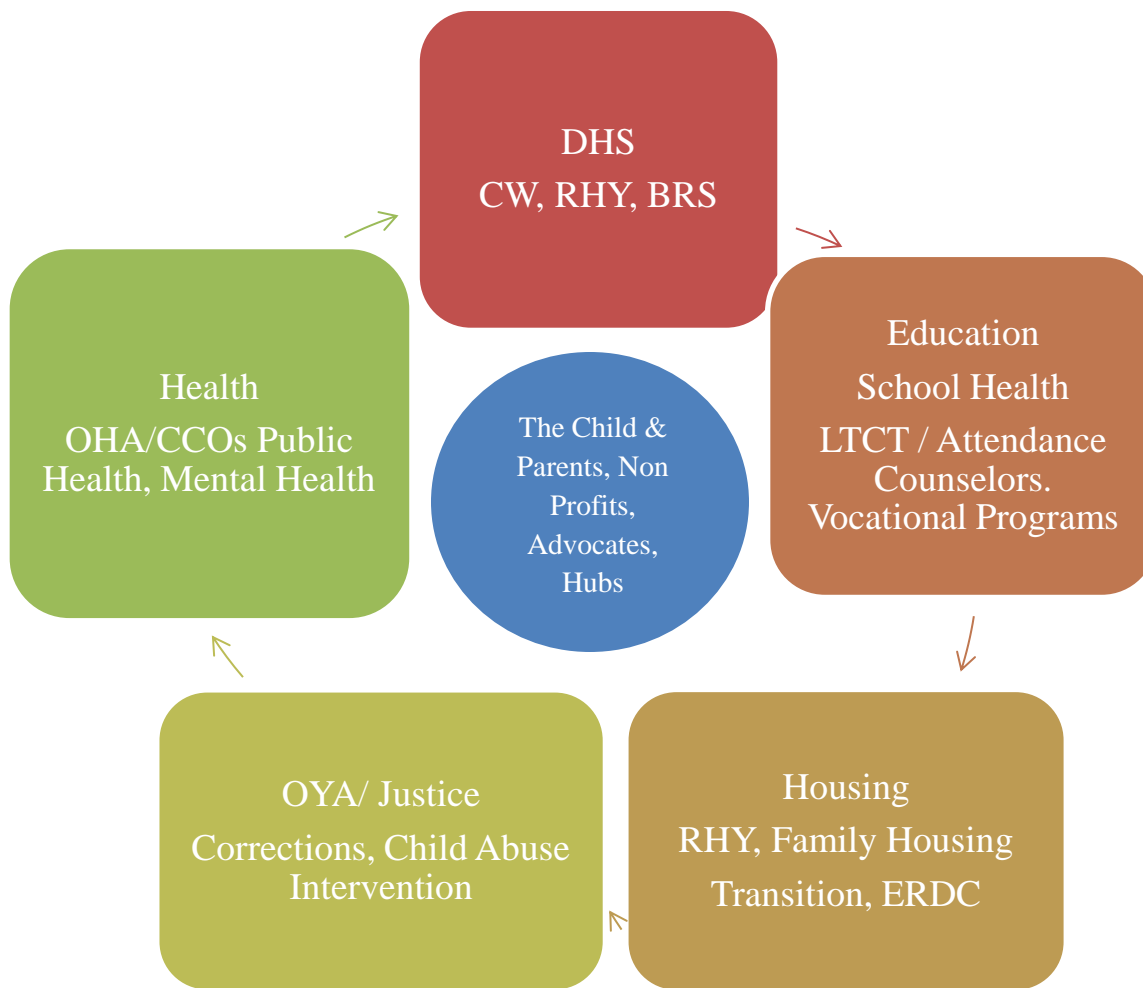


Scope of Supports for Kids 6-21 with high ACEs / Chronic Absenteeism



State Goals:

40/40/20
Triple Aim / Reduce Growth Rate
Improve the work force
Reduce population in corrections
Reduce abuse rates

Obstacles:

Lack of supports
Programs "stove-piped"
20% utilize 80%
10% chronically absent
Age balance is necessary

Solutions:

*Identify package of bills / budget efforts to target this population
Coordinate with agencies and advocates*

HB 2031 INTRO Human Services and Housing(H) Representative Hack, Representative Stark
Relating to services for youth in criminal justice system; declaring an emergency.
Directs Oregon Youth Authority to establish **pilot project to implement intensive in-home services model** that includes availability of residential treatment services for youth in juvenile justice system.
Authorizes authority to contract with nonprofit entities to establish model and provide services. Requires authority to evaluate pilot project and report to Legislative Assembly on or before date of convening of 2017 regular session. Appropriates moneys to authority to establish pilot project. Sunsets June 30, 2017.
Declares emergency, effective on passage.

HB 2185 INTRO Health Care(H) Representative Parrish, Representative Nosse
Relating to school nursing; declaring an emergency. **Creates position of State School Nursing Consultant** in Oregon Health Authority and specifies duties. Establishes Task Force on School Nursing. Sunsets task force on date of convening of 2017 regular session of Legislative Assembly. Declares emergency, effective on passage.

HB 2205 INTRO Ways and Means(J) Representative Huffman, Representative Taylor
Relating to child victims of commercial sexual exploitation. **Establishes Fund to End Commercial Sexual Exploitation of Children.** Continuously appropriates moneys in fund to Department of Justice to provide financial assistance to fund services, interventions and treatment for children who have been or may become victims of commercial sexual exploitation. Authorizes appointment of advisory committee to advise department and to make recommendations to department for awards of financial assistance.

HB 2015 INTRO Human Services and Housing, Representative Kotek, **Employee Related Daycare**

HB 2232 INTRO Human Services and Housing(H), 3:00 PM 03/20/2015 Representative Nathanson
House Committee Human Services and Housing, Work Session
Relating to support services for certain youth; declaring an emergency. Directs Department of Human Services **to appoint advisory committee to advise department regarding policies and procedures to coordinate statewide planning for delivery of services to runaway and homeless youth** and their families. Declares emergency, effective on passage.

HB 2233 INTRO Human Services and Housing(H), Representative Nathanson
Relating to residential care for children; declaring an emergency.
Requires Oregon Health Authority to establish an alternative "**administrative finding**" to be considered instead of a "neglect and abuse" finding" and to continue to reimburse behavioral rehabilitation services provider for children removed pending investigation of abuse.

HB 2234 A Human Services and Early Childhood(S), Representative Whisnant, Senator Gelsler, Senator Knopp, Representative Barton, Representative Hack
Relating to **child abuse medical assessments.** Requires Oregon Health Authority and insurers offering health benefit plans that reimburse costs of physician services to reimburse community assessment center for child abuse medical assessment and related services. Requires Oregon Health Authority and insurers offering policies or certificates of health insurance[™] health benefit plans that reimburse costs of physician services to create billing codes or alternative mechanism to enable[™] reimburse community assessment center to bill[™] for child abuse medical assessment and related services.

HB 2546 A Health Care(S) Representative Taylor, Representative Kennemer, Senator Steiner Hayward
3:00 PM 03/23/2015, Senate Committee, Health Care Public Hearing
Relating to inhalants; declaring an emergency. **Defines "inhalant delivery system."** Amends laws concerning sale of tobacco products to, and use of tobacco products by, minors so those laws equally apply to inhalant delivery systems. Provides for further regulation of inhalant delivery systems. Expands scope of offense of endangering welfare of a minor from knowingly causing sale of tobacco products to minors to knowingly allowing sale of tobacco products to minors and adds distribution and sale of inhalant

delivery systems. For purposes of Oregon Indoor Clean Air Act, defines "inhalant." Makes prohibitions of Oregon Indoor Clean Air Act apply to inhalants. Makes certain other changes to Oregon Indoor Clean Act.

HB 2626 A Ways and Means(J) Representative Reardon Youth Caucus: No Priority

Establishes state **construction bond program for school-based health centers**; declaring an emergency. Authorizes State Treasurer to issue lottery bonds to finance grants from Department of Education to school districts to pay for acquisition, construction or improvement of school-based health centers. Directs department to collaborate with Oregon Health Authority.

HB 2906 INTRO Health Care(H)

Relating to scientifically based research. **Modifies definition of "scientifically based research"** with respect to evidence-based programs.

HB 3319 INTRO Education(H) Representative Taylor

Relating to dropout prevention; declaring an emergency. **Directs Department of Education to evaluate methods to reduce dropout rates.** Declares emergency, effective on passage.

HB 5026 INTRO Ways and Means(J)

Relating to the financial administration of the **Department of Human Services**; declaring an emergency. Authorizes specified nonlimited expenditures. Declares emergency, effective July 1, 2015.

HJR 23 INTRO Revenue (H) Representative Nosse

Proposing amendment to Oregon Constitution relating to local option ad valorem property taxes imposed by school districts. Proposes amendment to Oregon Constitution to authorize school districts to impose local option taxes at rate not to exceed \$2 per \$1,000 of assessed value and not subject to compression under Ballot Measure 5 (1990) if approved by voters. Provides that **revenue must be spent to hire counselors, nurses and school liaison officers who are sworn law enforcement officers for schools.** Refers proposed amendment to people for their approval or rejection at next regular general election.

SB 150 INTRO Human Services and Early Childhood(S)

Relating to **extracurricular activities for foster children.** Requires Department of Human Services, child-caring agency and foster home to ensure provision of minimum of one extracurricular activity, where available at school or in community, to child receiving care or services from department, agency or home.

SB 158 INTRO Judiciary(S) Senator Monnes Anderson

Relating to contract authority of the Oregon Youth Authority. Authorizes Oregon Youth Authority to contract with cities to administer juvenile corrections programs and services.

SB 336 INTRO Health Care(S) Senator Monnes Anderson, Senator Kruse

Relating to state financial administration; declaring an emergency. Appropriates moneys from General Fund to Oregon Health Authority to **establish parity in funding formula for school-based health centers.** Declares emergency, effective July 1, 2015.

SB 337 INTRO Health Care(S) Senator Monnes Anderson, Senator Kruse

Relating to state financial administration; declaring an emergency.

Appropriates moneys from General Fund to Oregon Health Authority to **establish 11 new school-based health centers.** Declares emergency, effective July 1, 2015.

SB 338 INTRO Health Care(S) Senator Monnes Anderson, Relating to state financial administration; declaring an emergency. Appropriates moneys from General Fund to Oregon Health Authority for planning and administration necessary to accommodate new school-based health centers. Declares emergency, effective July 1, 2015. INCLUDED IN SB336

SB 503 INTRO Ways and Means(J) Senator Monnes Anderson, Senator Winters

Relating to **assistance for victims of sexual assault.** Requires Department of Human Services to identify applicants for and recipients of assistance under temporary assistance for needy families program who are victims of sexual assault or at risk for being victims of sexual assault. Directs department to report to each odd-numbered year regular session of Legislative Assembly regarding status and efficacy of sexual assault victim identification process, utilization of emergency assistance by victims of sexual assault and sexual assault training, information sharing and evaluation.

SB 553 INTRO 1:00 PM 03/26/2015 Education(S) Senator Gelser, Senate Committee Education Work Session, HR C

Imposes limits on instances when student under 12 years of age may be suspended or expelled from school. Declares emergency, effective July 1, 2015.

SB 556 INTRO 1:00 PM 03/26/2015 Education(S) Senator Gelser, Senate Committee Education Work Session

Prohibits use of expulsion to address truancy. Declares emergency, effective July 1, 2015.

SB 586 INTRO Ways and Means(J)

Relating to the Youth Development Council. **Increases age of youth** for whom Youth Development Council may oversee unified system of services from 20 years to 24 years.

SB 618 INTRO Human Services and Early Childhood(S), Senator Gelser

Relating to **identification cards for homeless youth.** Directs Department of Human Services to identify and enter into agreements with nonprofit organizations to assist homeless youth in obtaining identification cards from Department of Transportation. ADMINISTRATIVE FIX IN THE WORKS

SB 902 INTRO Human Services and Early Childhood(S),

Relating to **cooperation of coordinated care organizations with providers of services to children** in developing plans; declaring an emergency. Revives section 1, chapter 598, Oregon Laws 2013. Requires coordinated care organization to work with children's programs in developing community health improvement plan. Declares emergency, effective on passage.

FUNDING:

\$5.8 million request for Runaway and Homeless Youth Programs

\$100 million for Housing (should include youth housing)

\$250,000 Lane County proposal (similar to HB2031) for intervention / crisis program

\$__ million for Children's Farm Home (Trillium)

EASA Funding Request from OHA / AMH

\$92.4 million mental health request from President Courtney (Identify youth programs)

\$982,000 Funding for parity/expansion for SBHCs (SB336, in WM)

\$4 million Lottery Bond Construction program for SBHCs (HB2626, in WM)

ADDRESSING CHILDHOOD TRAUMA:

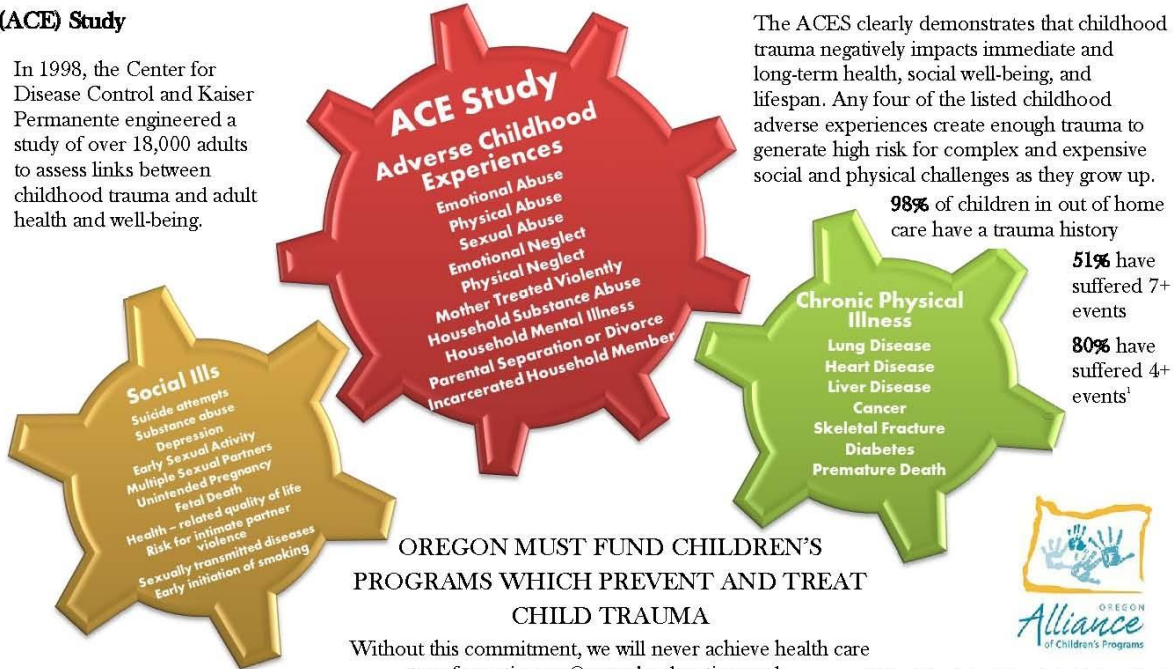
Oregon's Key to Health Care Transformation

Save taxpayer dollars and save children's lives

"ADVERSE CHILDHOOD EXPERIENCES"

(ACE) Study

In 1998, the Center for Disease Control and Kaiser Permanente engineered a study of over 18,000 adults to assess links between childhood trauma and adult health and well-being.



STUDY RESULTS

The ACES clearly demonstrates that childhood trauma negatively impacts immediate and long-term health, social well-being, and lifespan. Any four of the listed childhood adverse experiences create enough trauma to generate high risk for complex and expensive social and physical challenges as they grow up.

98% of children in out of home care have a trauma history

51% have suffered 7+ events

80% have suffered 4+ events¹

OREGON MUST FUND CHILDREN'S PROGRAMS WHICH PREVENT AND TREAT CHILD TRAUMA

Without this commitment, we will never achieve health care transformation or Oregon's education goals.

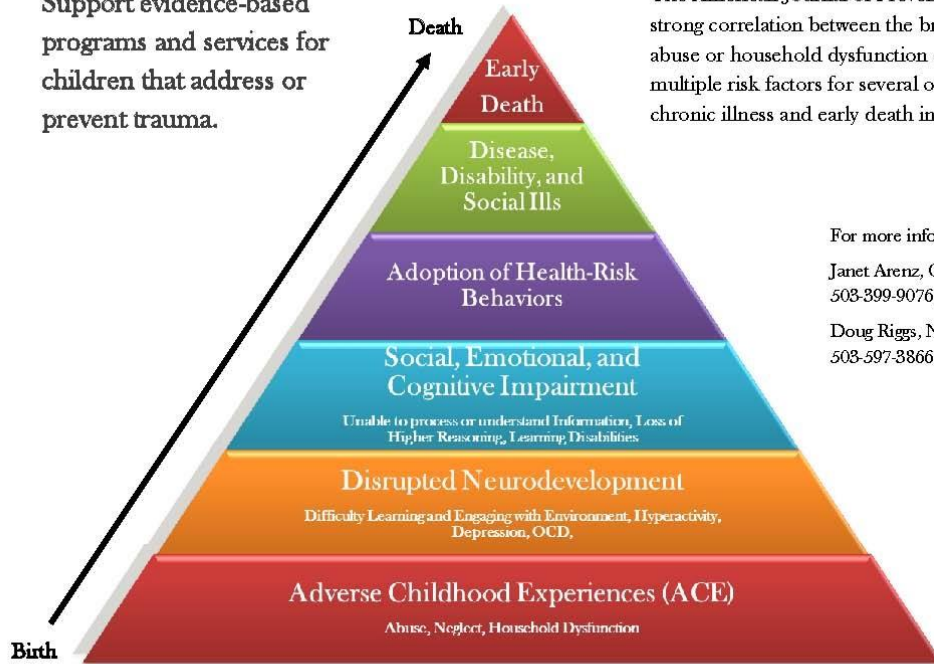


¹ 2012—Colorado Health Foundation Outcome Study

ACHIEVE OUTCOMES, RETURN ON INVESTMENT, AND SAVINGS

An investment in children today means they will not become the next chronically ill adults with complex, expensive needs. Together we can build healthy children, who become educated and working adults, and who will raise their own healthy families.

Support evidence-based programs and services for children that address or prevent trauma.



The American Journal of Preventative Medicine found a strong correlation between the breadth of exposure to abuse or household dysfunction during childhood and multiple risk factors for several of the leading causes of chronic illness and early death in adults.

For more information, contact

Janet Arenz, OACP Executive Director
503-399-9076; or

Doug Riggs, NGrC President
503-597-3866



OREGON
Alliance
of Children's Programs

Mechanisms by which adverse childhood experiences influence health and well-being throughout a lifespan

9.20.2013