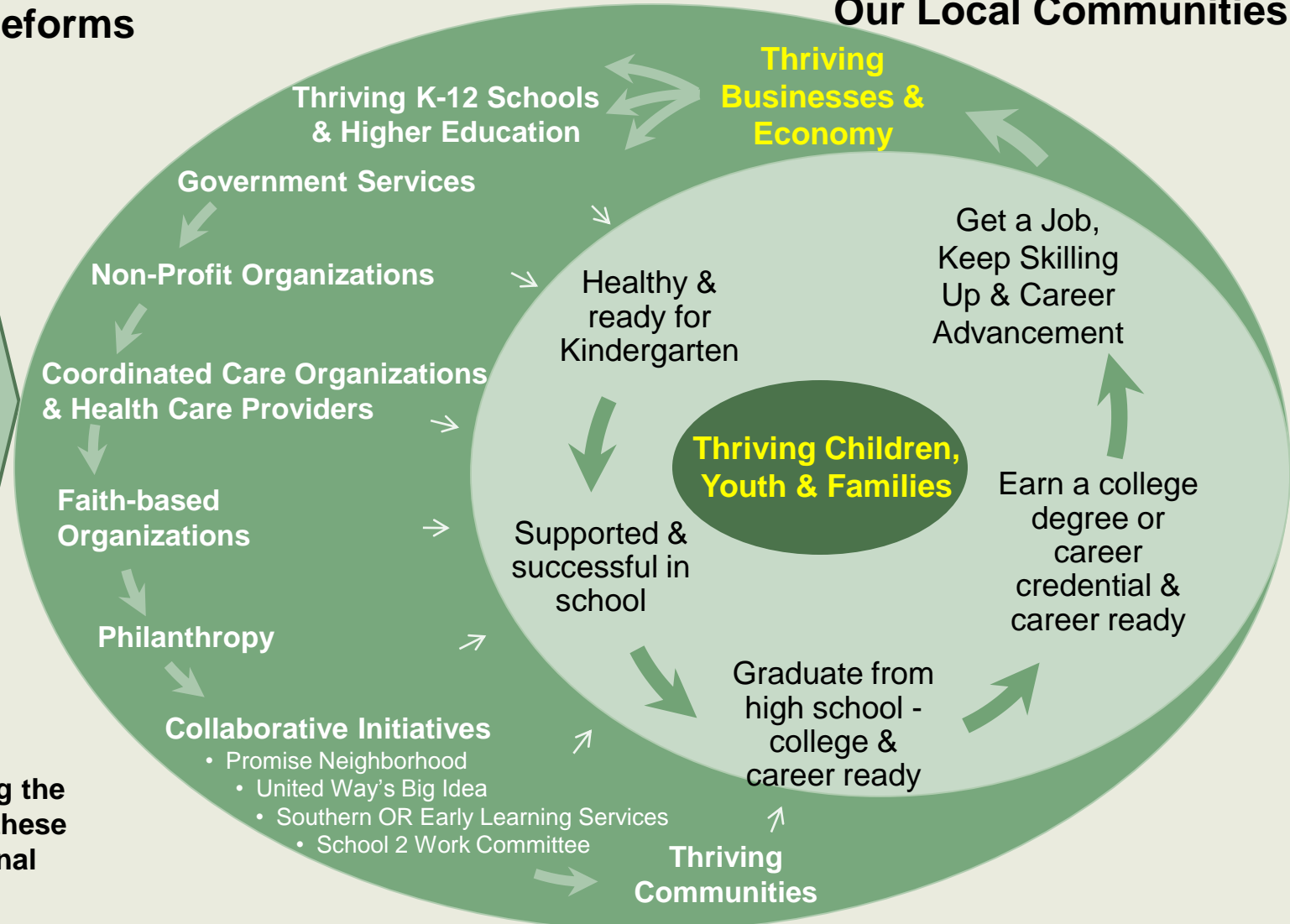


# Southern Oregon Success Collective Impact • A Systemic View

## State System Reforms

## Our Local Communities



**Our region is leading the state in Integrating these reforms at the regional level**



## Community Dashboard & High Level Performance Metrics

Children Entering Kindergarten are Ready to Succeed in School	Youth are Engaged in School and Succeeding in their Learning	Youth are Graduating High School and are Ready for College & Work
<ul style="list-style-type: none"> <li>• Performance on Kindergarten Assessment</li> <li>• Number of children receiving Developmental Screening prior to age 3</li> <li>• Number of 0-5 year old children with access to PCPCH -Patient Center Primary Care Home</li> </ul> <p>Target population: 16,000 children with high risk / poverty factors</p>	<ul style="list-style-type: none"> <li>• 3<sup>rd</sup> Grade Reading: 69.1%*</li> <li>• 8<sup>th</sup> Grade Math: 57.8%*</li> <li>• 9<sup>th</sup> Grade Student Attendance: 78.2%* (not chronically absent)</li> </ul> <p>*= All students 2013-2014, currently includes Klamath Co.)</p>	<ul style="list-style-type: none"> <li>• Graduation Rate: 67.4%*</li> <li>• Number of college level course in HS: goal is 3+ (baseline TBD data currently unavailable from ODE)</li> <li>• National Career Readiness Certificate: 613(as of 3/1/14)</li> <li>• 1st Year College Enrollment : 53%*</li> <li>• 2<sup>nd</sup> year college persistence: 41%*<i>approximately</i></li> </ul> <p>*= (2008-2009 cohort of 9<sup>th</sup> graders, data currently includes Klamath Co)</p>

### ←Children, Youth & Family are Healthy→

<ul style="list-style-type: none"> <li>• Youth Mental Health               <ul style="list-style-type: none"> <li>▸ Youth Drug &amp; Alcohol Rates (8<sup>th</sup> grade binge drinking/ marijuana usage in last 30 days 25% in both counties)*</li> <li>▸ Teen Pregnancy Rate (Jx Co 37 births/1000 teens, Jo Co 36/1000)*</li> <li>▸ Teen Suicide Rate (8% of youth in both counties attempt suicide)*</li> </ul> </li> </ul> <p>*Community Health Assessment 2013</p>	<ul style="list-style-type: none"> <li>• Access to Health Care               <ul style="list-style-type: none"> <li>▸ Patient Center Primary Care Home (% of all youth assigned to a PCPCH)</li> <li>▸ Access to oral health care (% of untreated decay in children grades 1-3 in the region 24%)*</li> <li>▸ % of youth receiving annual well health exams</li> </ul> </li> </ul>
--	--

**Children's First Ranking – Jackson County ranks 33 out of 36 counties for number of homeless youth, Josephine ranks 27 out of 36 (with 36<sup>th</sup> being the highest number of homeless youth)**

• Child Poverty Jackson Co. 2013 11,603(Count) 26.7% Josephine 2013 4,806(Count) 30.7%