



Oregon Translational Research & Development Institute



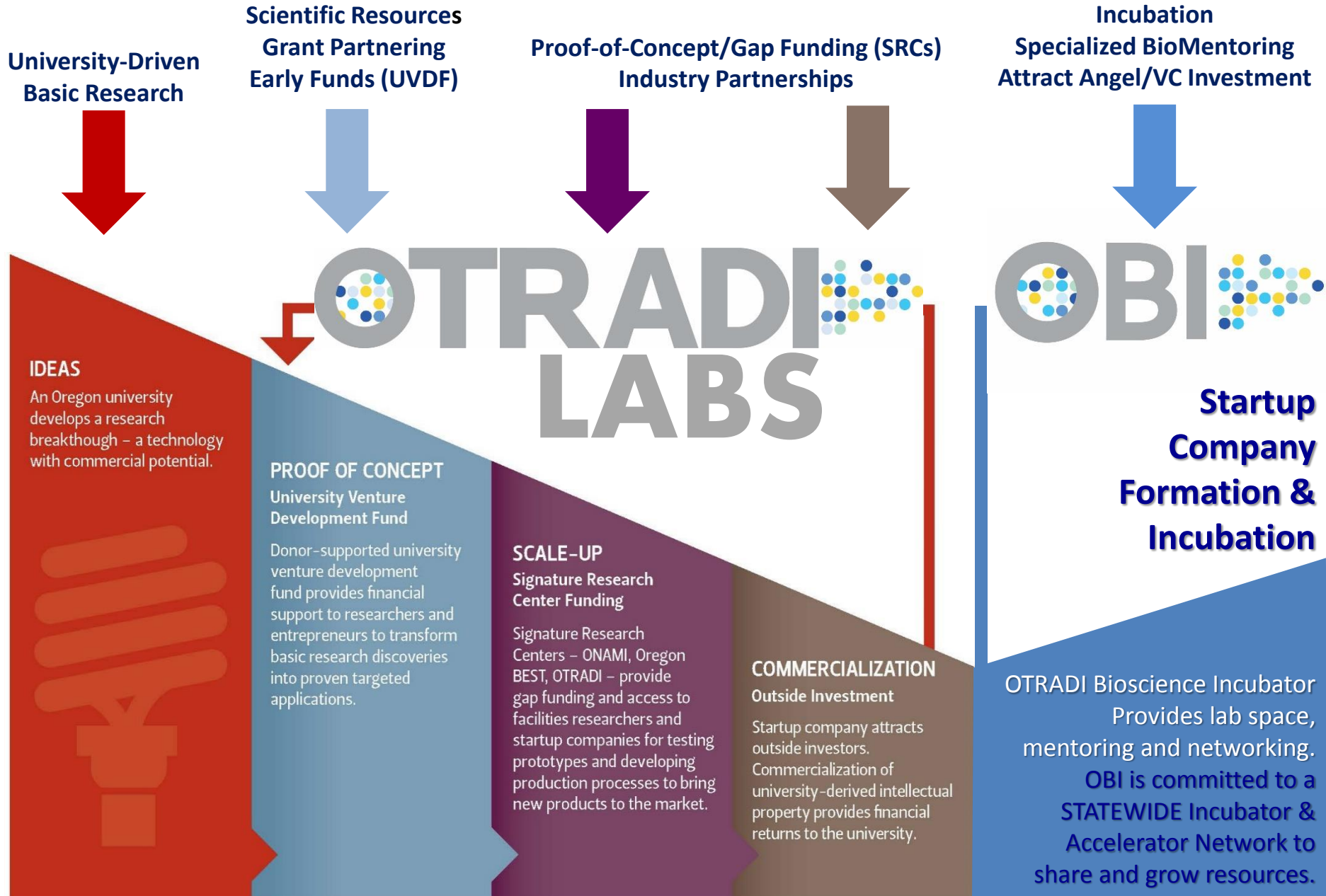
OTRADI Bioscience Incubator

Jennifer Fox, Executive Director
jfox@otradi.org; 503.954.3035

OTRADI Labs (Portland and OTRADI South-Corvallis):
Oregon's only Bioscience Proof-of-Concept Labs

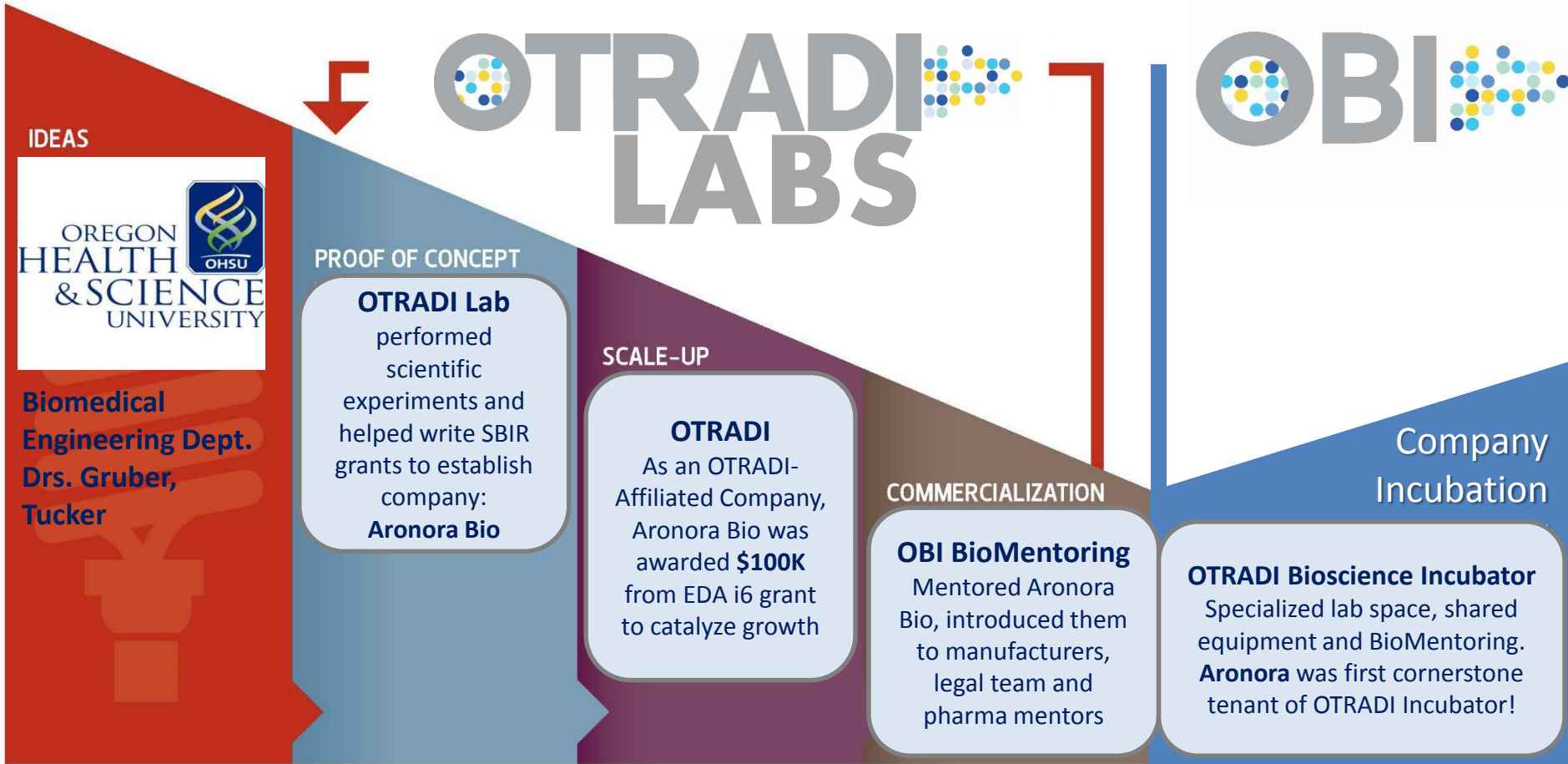
OTRADI Bioscience Incubator (OBI):
Oregon's only Bioscience-Focused Business Incubator

Translational Research: Transforming Research into Industry



Case Study of OTRADI Pipeline: **Aronora Bio**

A Continuum of Innovation, Incubation and Job Creation

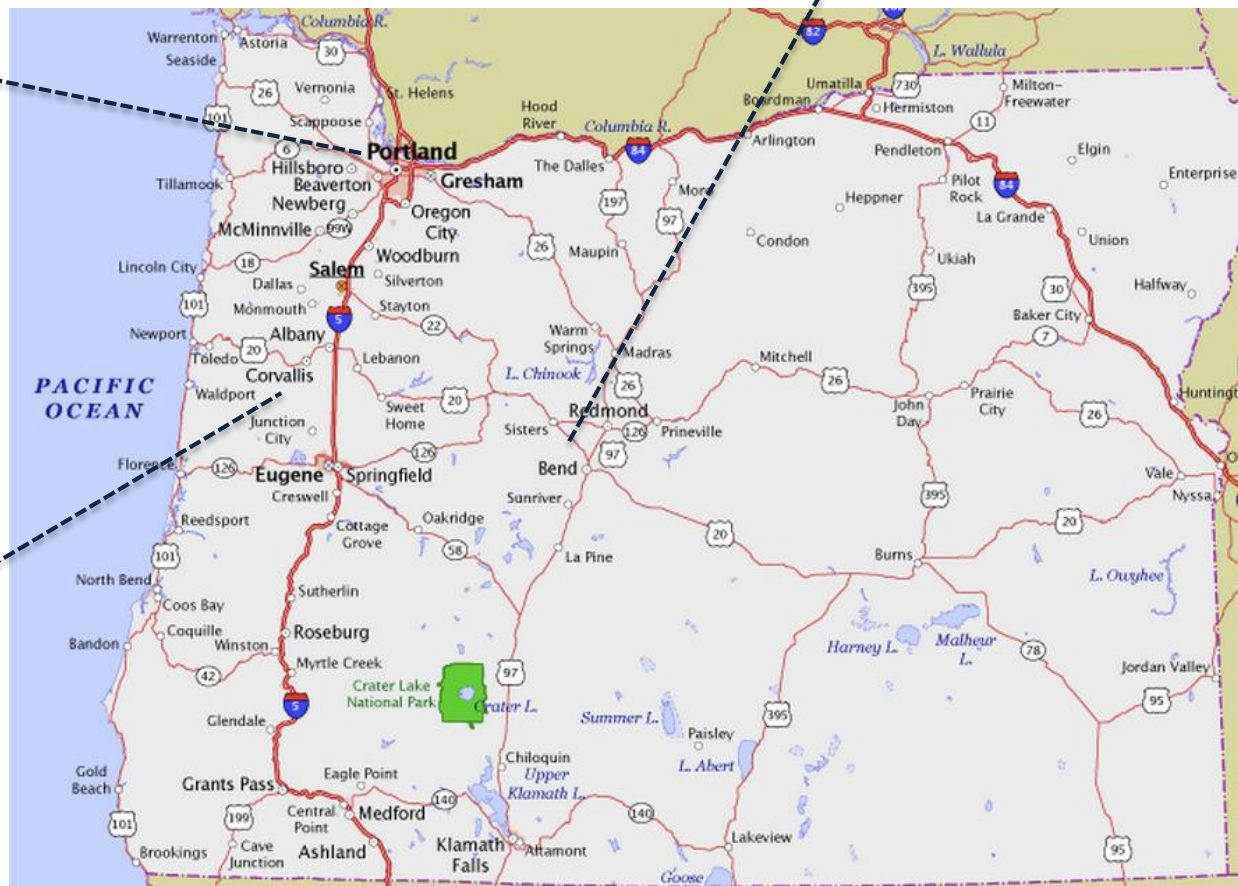


- \$14M in SBIR awards since 2009
- 3rd largest recipient of NIH SBIR funds in the US in 2014
- First company to join the OTRADI Bioscience Incubator
- Funding and partnership with Bayer Healthcare
- 1st drug candidate entering Phase 1 clinical trials in 2015

Next Steps to Expand and Collaborate: Expand OTRADI Statewide Network of Labs and Incubation

OTRADI
& **OBIBend**
Portland

OBIBend ICE Project
Collab w/
OSU-Cascades



OTRADI
South
Corvallis



Oregon Translational Research and Development Institute (OTRADI) and the OTRADI Bioscience Incubator (OBI)

Highlights

- Established in 2007, OTRADI operates the State's only non-profit, proof-of-concept, bioscience laboratories, with unique robotic equipment and scientific expertise found nowhere else in Oregon. *OTRADI has used its expertise and equipment to generate over \$1 million dollars of revenue to support its scientific expansion and outreach.*
- Through grant partnering and helping to attract federal, private and venture capital funding, OTRADI and OTRADI-Affiliated Researchers and startups have leveraged \$12.4M in State investment in OTRADI into >\$100M in private, federal and foundation funding for Oregon (8:1 Return on Investment).
- OTRADI has provided work for over 35 Oregon bioscience companies in the form of scientific expertise, product expansion, grant partnering, introductions to investors, recruitment and expansion. Since 2011 alone, OTRADI's work helped to create or retain 230 bioscience jobs in Oregon.
- OTRADI has worked with over 150 researchers from Oregon universities across the state. OTRADI-affiliated researchers have generated \$3.5M in licensing revenue for universities in Oregon.
- In March 2015, OTRADI opened our second proof-of-concept lab. OTRADI South, located in Corvallis, Oregon, brings advanced robotic drug discovery equipment and scientific personnel to more closely serve bio-researchers and companies in the Willamette Valley and Southern Oregon.
- Bioscience startup companies face unique challenges, including the need for both private and shared wet lab space, intensive business mentoring, entrepreneurial assistance and introductions to granting agencies and investors. To help fulfill these pressing needs, in 2013 OTRADI built-out and opened Oregon's first and only bioscience-focused business incubator, the



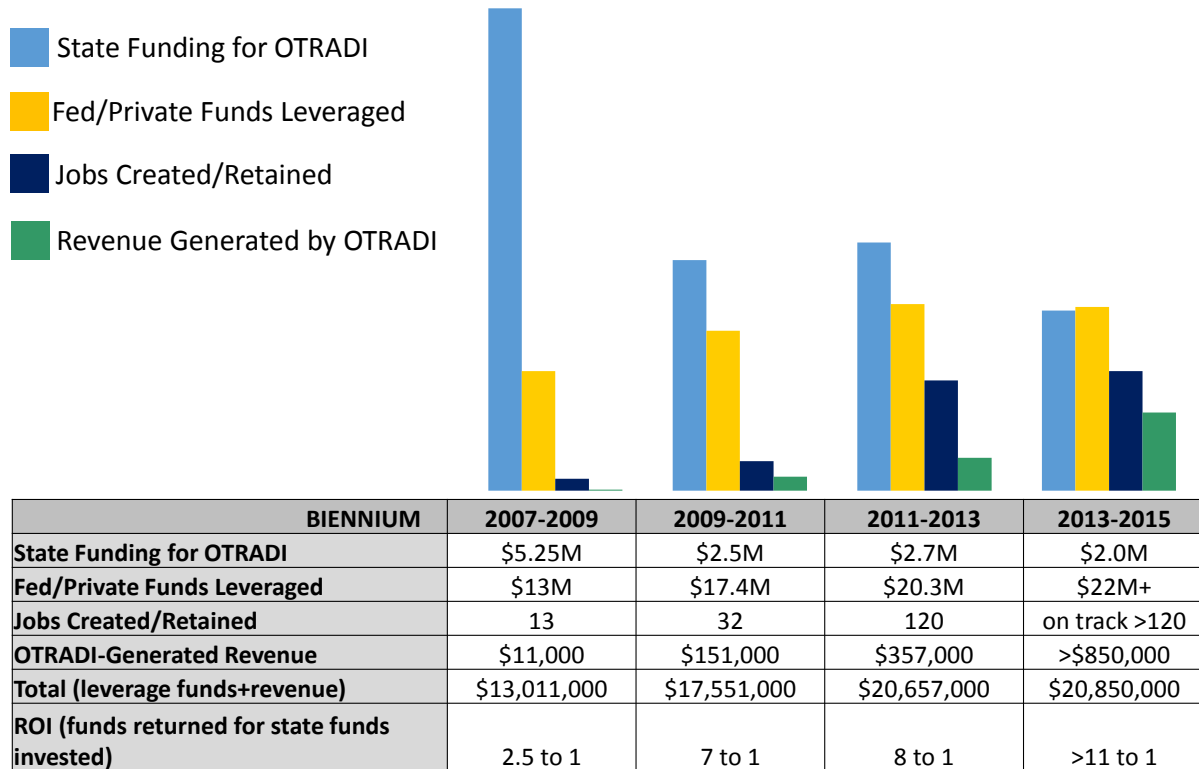


OTRADI Bioscience Incubator (OBI). Since opening its doors, the OBI has been 100% subleased by six startup companies.

- Located in the bioscience hub of Portland's South Waterfront within walking distance to the OHSU tram and new Collaborative Life Science Building, the OTRADI Bioscience Incubator provides physical labs and office space, entrepreneurial mentoring and cost-prohibitive shared scientific equipment to startup bioscience companies.
- In response to an ever-growing waiting list of bioscience startups looking for incubation space and mentoring, the OTRADI Bioscience Incubator is expanding to 17,000 square feet and will be home to twelve bio-startup companies by Spring 2015.
- To achieve statewide reach in helping bioscience startup companies thrive, OTRADI has launched a unique BioMentoring program comprised of nearly 100 professionals willing to donate time to mentor bio-startups and entrepreneurs across Oregon.
- OTRADI plans to expand our proven bioscience incubator offerings to Eastern Oregon by opening an OTRADI Bioscience Incubator (OBI) satellite in Bend, OR in 2016. OBI-Bend will serve as a networked hub for bio-entrepreneurship and startup company incubation.
- More examples of OTRADI helping Oregon companies innovate and thrive:
 - **Galena Biopharma:** Recruited to Oregon in 2012, added over 30 bio jobs to date
 - **Aronora Biopharmaceuticals:** Awarded >\$14M in NIH SBIR small business grants, leading to company expansion and partnership with Bayer Pharmaceuticals. First drug in clinical trials in 2015; *cornerstone tenants of OTRADI Bioscience Incubator*
 - **13Therapeutics:** Awarded \$3.2M in DOD SBIR grants; *cornerstone tenants of OTRADI Bioscience Incubator*
 - **Agere Pharmaceuticals:** Successful spin-off of Bend Research, Agere has grown to over 100 employees within the last four years in Bend, Oregon.
 - **Hewlett-Packard:** utilized OTRADI's unique lab equipment and expertise to beta-test new robotics for HP; novel robotic platform now marketed to public
 - **Marker Gene Technologies:** granted \$100K due to affiliation with OTRADI through EDA i6 Challenge Award



Funding and Return for Oregon Over Biennia



Note: y-axis values have been scaled to ensure all values fit onto a single graph

