



Oregon Education
Investment Board



BUILDING SEAMLESS PATHWAYS FOR STUDENT SUCCESS

Joint Ways and Means
Education Subcommittee



TABLE OF CONTENTS

- ❑ **Agency Summary**
 - ❑ Organizational Structure
 - ❑ Programs
- ❑ **Policy Option Packages**
 - ❑ Removal of the OEIB Sunset
 - ❑ Engineering & Technology Innovation Council Funds
 - ❑ STEM Hubs
 - ❑ Statewide Teaching Conditions Initiative
- ❑ **Key Performance Measures**
- ❑ **2015-17 Operations & General Fund Budget**



AGENCY SUMMARY

MISSION

To advise and support the building, implementation and investment in a unified public education system in Oregon that meets the diverse learning needs of our youngest Oregonians through post-secondary students, and provides boundless opportunities that support success.



AGENCY SUMMARY

OEIB STRATEGIC BUDGET GOALS

Strategy 1: Coordinate a seamless, student-centered and equitable education system, from birth to college and career

Strategy 2: Drive targeted strategies to achieve key student learning outcomes

Strategy 3: Build statewide support systems to position agencies and educational entities to improve student outcomes



AGENCY SUMMARY: STAFF

- ❑ Chief Education Officer
- ❑ Chief of Staff/Legislative Director
- ❑ 5 Agency Directors:
 - ❑ College and Career Readiness Director
 - ❑ Equity and Community Engagement Director
 - ❑ Communications Director
 - ❑ STEM Director
 - ❑ Research and Policy Director
 - ❑ Oversees a Deputy Director and 2 Research Analysts
 - ❑ 5 Members of the Admin Support Team



THE VANTAGE POINT & UNDUPLICATED VALUE

WHY WAS THE OEIB CREATED?

- ❑ Persistent barriers to student learning
- ❑ Growing student opportunity gap
- ❑ Entities impacting student success operating in silos



REACHING CRITICAL STUDENT OUTCOMES & 40-40-20 BY 2025





STRATEGIC LEADERSHIP FROM BIRTH THROUGH COLLEGE & CAREER

- ❑ Improving system capacity to deliver outcomes
- ❑ Improving access and opportunity for every student through use of the Equity Lens
- ❑ Leveraging community-driven solutions and strategies
- ❑ Convening communities, stakeholders and key partners
- ❑ Elevating promising practices



AGENCY SUMMARY

PROPOSED KEY PERFORMANCE MEASURES

- ❑ Increase reading readiness for students entering kindergarten
- ❑ Increase the % of students not chronically absent in 6th grade
- ❑ Increase the % of students not chronically absent in 9th grade
- ❑ Increase the number of high schools offering college credit
- ❑ Increase the number of systemic educational barriers identified and addressed



AGENCY SUMMARY

PROPOSED KEY PERFORMANCE MEASURES (CONT.)

- ❑ Increase the % of college and university graduates employed within 1 year
- ❑ Increase the % of educators who are culturally and linguistically diverse
- ❑ Increase the number of stakeholders who rate the quality of the research and policy service as “great” or “excellent”
- ❑ Increase the percentage of customers who rate agency service as “great” or “excellent”



AGENCY BUDGET SUMMARY

HIGHLIGHTS

- ❑ Agency Summary: Key Initiatives
- ❑ Policy Option Package 101: OEIB Sunset and Agency Operations
- ❑ Policy Option Package 102: Reconfiguration of ETIC Funds
- ❑ Policy Option Package 103: Support for STEM Hubs
- ❑ Policy Option Package 104: Transfers TELL Oregon Survey Funds from ODE



AGENCY SUMMARY

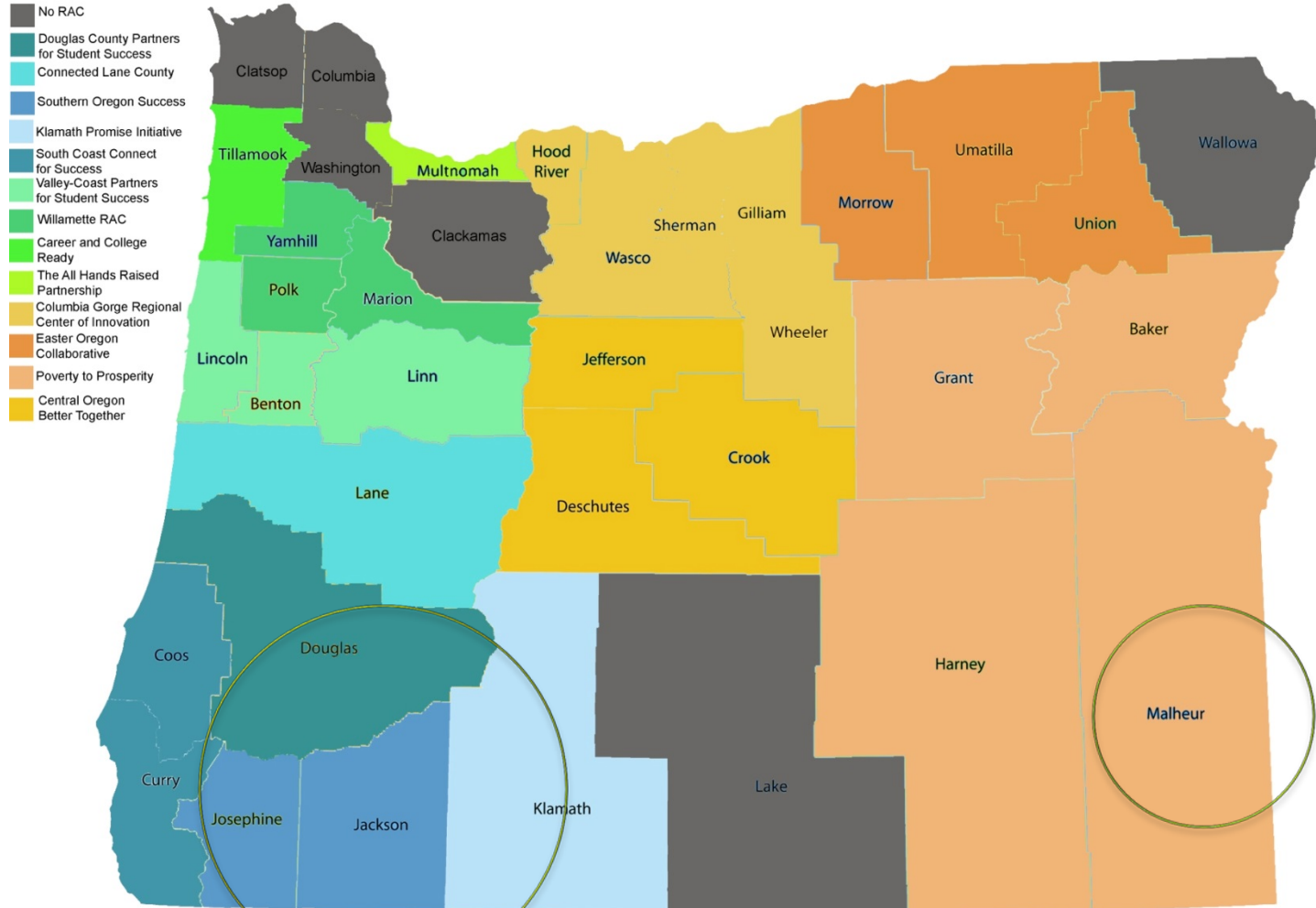
Regional Achievement Collaboratives (RACs)

- ❑ Funds allocated to support cross-sector, P-20 partnerships focused on regional strategies to meet key student outcomes.
- ❑ Provides backbone support to 13 Regional Achievement Collaboratives (RACs) in the 2015-17 biennium.
- ❑ Continues agency functions to coordinate, convene and disseminate best practices across RAC network



Oregon's Regional Achievement Collaboratives

Regional Achievement Collaboratives (RAC) were designed to forge connections between schools, community organizations, businesses and local leaders to drive communities to actively support improving education outcomes beyond the classroom. Each RAC brings together leaders across the learning continuum, including early learning providers, K-12 leaders and university presidents. RAC members work with their community to review local achievement data, identify underlying problems that impede education and focus on collective impact strategies to boost educational outcomes.





AGENCY SUMMARY

EARLY LITERACY

- ❑ Supports scale up of the Statewide Literacy Campaign, *stORYtime* statewide

- ❑ OEIB will provide strategic leadership of the scale up of the campaign





AGENCY SUMMARY

RESEARCH AND POLICY CENTER

- ❑ Data and evidence-based approach to policy development
- ❑ Achievement Compact analysis
- ❑ Evaluate and monitor strategic initiatives
- ❑ Development of Return on Investment Model



POLICY OPTION PACKAGES

POLICY OPTION PACKAGE 101

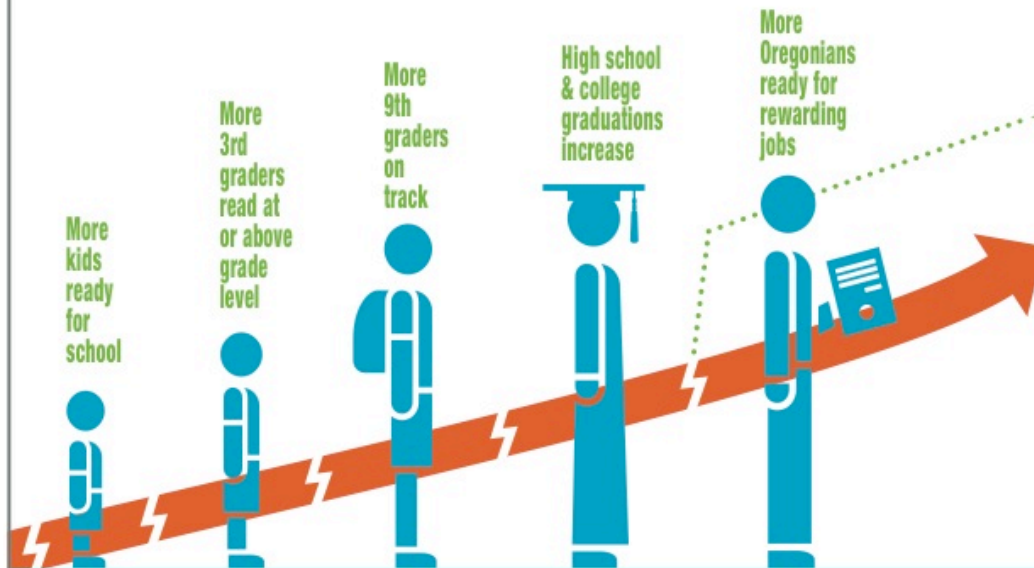
Removal of OEIB Sunset

- ❑ OEIB and Office of Chief Education Officer sunset on March 15, 2016.
- ❑ Funds agency operations through remainder of 2015-17 biennium



Oregon Education Investment Board

REACHING KEY OUTCOMES AND 40-40-20 THROUGH TRANSITION COORDINATION



EQUITY LENS

CONVENE

Early Learning Providers, Community Organizations, Culturally Specific Groups, Oregon Tribes, Professional Associations, K-12 Partners, Higher Ed Partners, and Businesses



STUDENTS

Coordinate & Drive Collective Impact

Bust Barriers & Amplify Assets

Learn & Share Promising Practices



ALIGNED EQUITABLE ACTION

Investments, Policies, Initiatives/Programs, and Processes

POLICY OPTION PACKAGES

POLICY OPTION PACKAGE 102

Reconfiguration of ETIC Funding

- ❑ Transfers \$24 million to the HECC
- ❑ \$6.1 million to Community Colleges and Universities to prepare students in high-need, high-wage STEM and CTE fields.





POLICY OPTION PACKAGES

POLICY OPTION PACKAGE 103

Regional Hubs to Support STEM-Career Technical Education

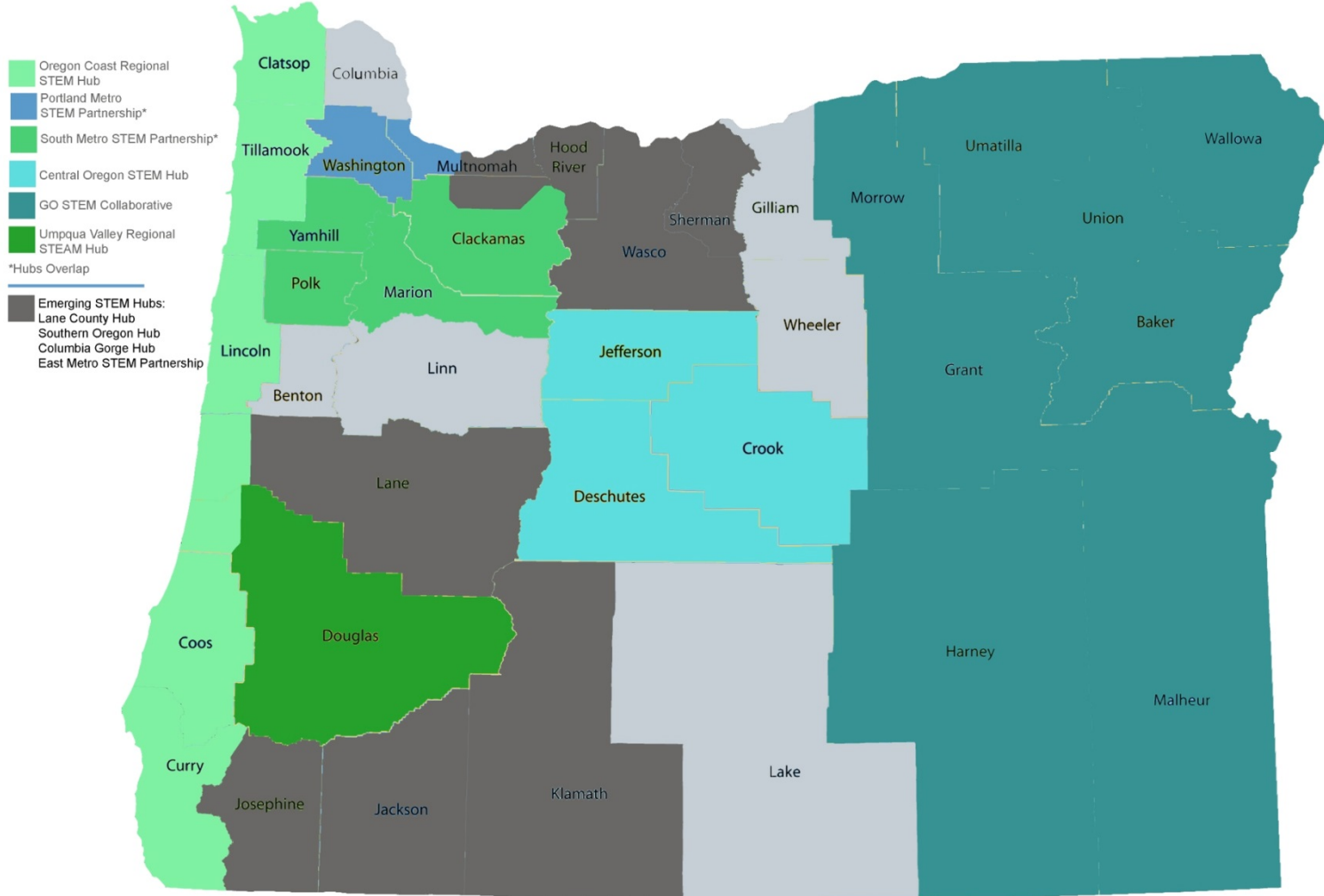
- ❑ Funds allocated to support regional hubs providing programming to increase number of students proficient in STEM and CTE skills
- ❑ Economic prosperity strategy through multi-stakeholder engagement
- ❑ Coordinates with local workforce investment boards (LWIBs)
- ❑ Expand backbone support to 10-12 regional STEM Hubs, bringing 6 additional Hubs online in the 2015-17 biennium.
- ❑ Continue agency functions to coordinate, convene and disseminate best practices across Hub network



Oregon's STEM Hubs

STEM Hubs were designed to unite schools, nonprofits, businesses, civic leaders and communities on the regional level to drive local STEM education transformation. The Hubs leverage local resources and opportunities to bring STEM to students early and often, engaging them in and beyond the classroom. STEM Hub borders are fluid, overlapping into surrounding communities or bringing particular expertise or tool sets to a wider region. The map below is intended as a guideline only, for the the closest approximate coverage for each hub.

Some of the unfunded counties do have local groups working on STEM education issues and are seen below as "Emerging STEM Hubs".







POLICY OPTION PACKAGES

POLICY OPTION PACKAGE 104

Statewide Teaching Conditions Initiative

- ❑ Funds to administer statewide teaching conditions survey across all K-12 schools in Oregon.
- ❑ Continue agency functions to evaluate strategic investments in support of high-quality instruction, professional development, and school improvement.



Oregon Education
Investment Board



BUILDING SEAMLESS PATHWAYS FOR STUDENT SUCCESS

Joint Ways and Means
Education Subcommittee