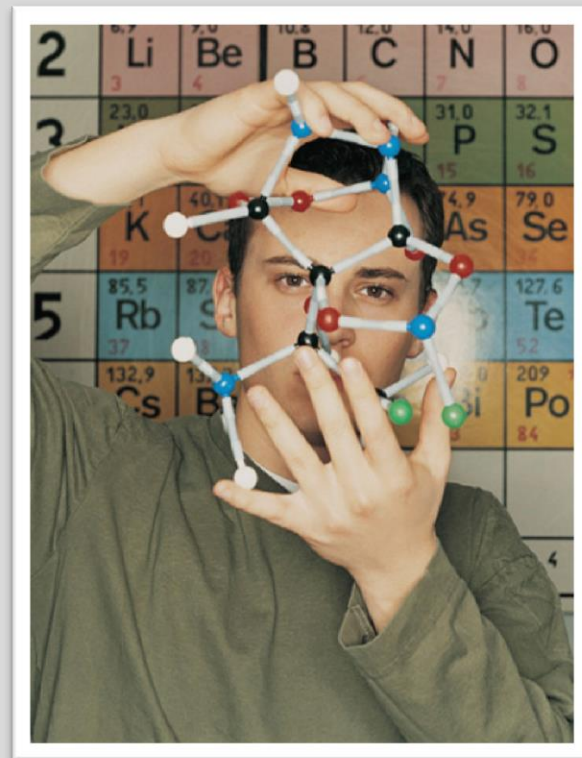


# A STREAMLINED AND INTEGRATED STATE HIGHER EDUCATION AGENCY



## *HECC OPERATIONS AND PROGRAMS*

PRESENTED TO: JOINT COMMITTEE ON WAYS AND MEANS, SUBCOMMITTEE ON EDUCATION



Day 16

BEN CANNON, Executive Director, HECC; Juan Báez-Arévalo, Director, Private Postsecondary Education



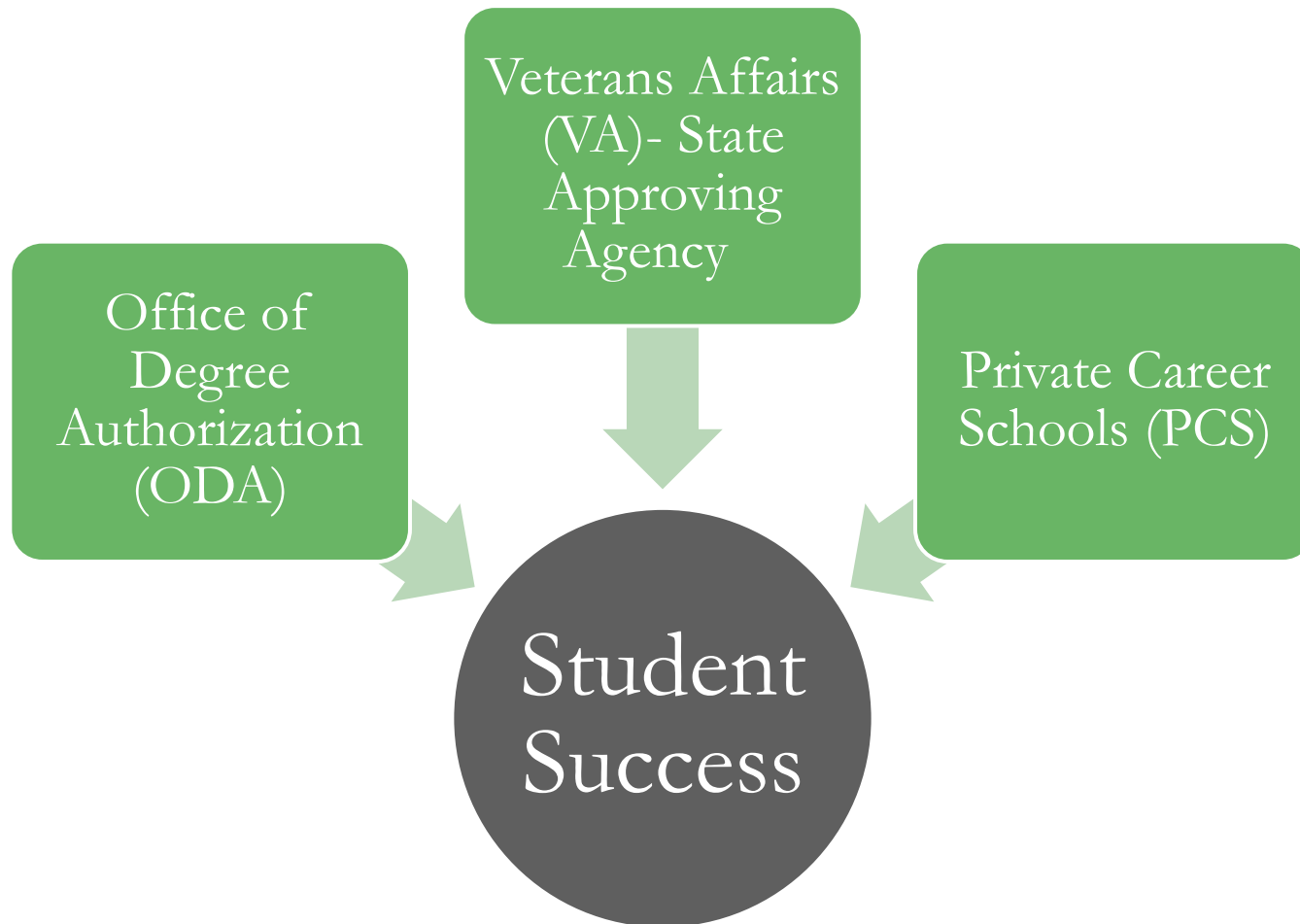
# Oversight of Private Postsecondary Education in Oregon

Juan Báez-Arévalo, Director, Private Postsecondary Education



# OFFICE OF PRIVATE POSTSECONDARY EDUCATION

4



# KEY RESPONSIBILITIES

5

## ODA

- Responsible for ensuring the quality of in-state, non-exempt, private higher education programs and out of state private and public higher education programs offered to Oregon students.

## VA-SAA

- Responsible for assuring that the programs approved for the training of veterans offered in all postsecondary institutions in Oregon are quality programs.

## PCS

- Responsible for ensuring the quality of private career schools, establishes business and fiscal standards, sets instructional and curricular requirements, and provides technical assistance.

# OFFICE OF DEGREE AUTHORIZATION

6

## Four key functions:

- Evaluate and approve degree programs at certain private colleges located in our state.
- Evaluate and approve distance (ex. online) degree programs offered to Oregonians by colleges and universities located outside our state.
- Enforce laws against diploma mills.
- Coordinate the implementation of SARA - State Authorization Reciprocity Agreement.

# VA-STATE APPROVING AGENCY (SAA)

7

The State Approving Agency (SAA) was appointed by the Governor pursuant to a contract between Oregon and the U.S. Department of Veterans Affairs.

Tasked with the responsibility of approving programs offered at public and private educational institutions in Oregon for those eligible for GI Bill education benefits.

Core functions or responsibilities: program approval, facility oversight, outreach, and acting as liaison.

The types of training establishments with VA approved programs include: colleges and universities, community colleges, vocational schools, business schools, professional schools, and high schools.

# PRIVATE CAREER SCHOOLS UNIT

8

## Primary functions, Private Career School licensing unit

- License career schools doing business in Oregon.
- Approve programs offered by new and existing schools.
- Investigate and respond to complaints regarding career schools.
- Provide significant technical assistance to licensees and license applicants.



# PRIVATE POSTSECONDARY, POP 302

9

- Staff allocation (one new Education Program Specialist 2 position) supported by self-sustaining funding from program fees.
- Supports the need for more integrated regulatory structures for program approval, compliance and monitoring.
- Allows the HECC to enhance the “steering” of quality educational options offered by private, non-profit and out of state institutions.
- Increases proactive coordinated monitoring, coaching and guidance (steering) of private and out of state distance education.
- Supports the development of higher quality programs delivering more positive performance results for Oregonians (quality and number of program offerings) in support of Oregon’s 40-40-20 goals.

# Integrated Agency Request

BEN CANNON, Executive Director, HECC



# INTEGRATED AGENCY REQUESTS (GF ONLY)

11

Activity	Budget Items	2013-15 LAB	2015-17 GRB
<b>Offices of University Coordination, Research/Data, and commission support<sup>1</sup></b>	General operations funding Package 080/303: Research/data POP 301: management streamlining POP 304: education association memberships	\$2.7M GF -- -- -- <b>Total: \$2.7M GF</b>	\$3.8M GF + \$1.4M GF + \$0.4M GF + \$0.4M GF <b>Total: \$6.0M GF</b>
<b>Office of Community Colleges and Workforce Development<sup>2</sup></b>	CCWD operations funding POP 301: management streamlining POP 311: work reconciliation See also HB 2408 (CCWD/HECC merger)	\$14.1M GF -- -- <b>Total: \$14.1M GF</b>	\$14.0M GF, (\$0.1M GF) + \$1.0M GF <b>Total: \$14.9M GF</b>
<b>Office of Student Access and Completion</b>	OSAC operations funding POP 131: OOG expansion POP 214: scholarship restoration POP 301: management streamlining POP 313: IT needs	\$2.1M GF -- -- -- -- <b>Total: \$2.1M GF</b>	\$1.9M GF + \$0.3M GF + \$0.3M GF (\$0.1M GF) + \$1.0M GF <b>Total: \$3.5M GF</b>

<sup>1</sup>Includes operations related to Commission and its executive, research/data, communications, university coordination.

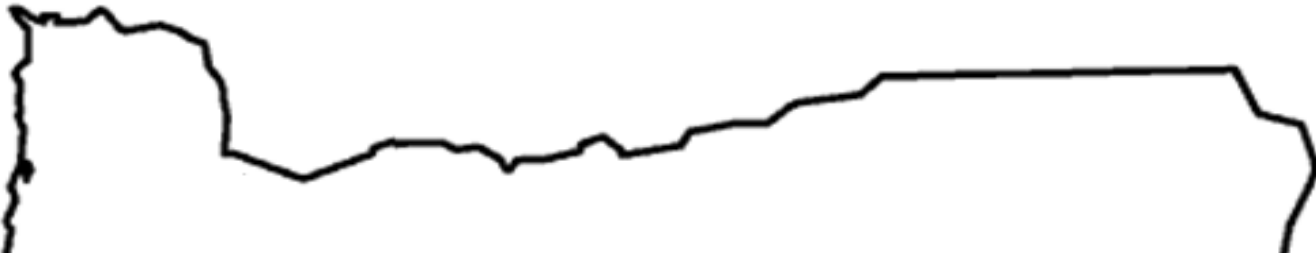
<sup>2</sup>Does not include funding for OYCC or newly proposed workforce investments (youth employment, incumbent worker training)

LAB=Legislatively Adopted Budget, GRB=Governor's Recommended Budget, GF=General Funds, OF=Other Funds, FF=Federal Funds



# VALUE OF THE HECC: STRATEGIC FOCUS

12



**Uniquely  
positioned to  
consider broad  
aspects of  
postsecondary  
education in  
Oregon**

Permits the state to strategically focus on:

- Investing resources to maximize student success
- Improving student achievement
- Increasing postsecondary affordability
- Key pathways to and within postsecondary institutions
- Connecting job-seekers with employment opportunities

# AGENCY INTEGRATION AND ALIGNMENT

13

The HECC proposes to organize and align state agency staff under the HECC for:

- financial aid and student access (OSAC)
- community colleges and workforce (CCWD)
- private postsecondary (ODA/PCS/VA)
- public university support.

This creates integrated units for research, data, and operations, and streamlines management and reporting.

# HECC AGENCY ORGANIZATIONAL STRUCTURE

RECOMMENDED FOR 2015-2017

The HECC agency is responsible for carrying out the directives, initiatives, and statutory requirements of the Higher Education Coordinating Commission. The proposed budget organizes the integrated agency into eight units described below and on the following pages.

Executive Director



**Policy & Operations**



**Office of Research & Data**



**Office of Student Access & Completion**



**Office of Community Colleges & Workforce Development**



**Office of University Coordination**



**Office of Private Post-secondary**



**Center for Community Innovation**



# POLICY AND OPERATIONS RECOMMENDED FOR 2015-2017

15

## HECC EXECUTIVE DIRECTOR (PEMH)

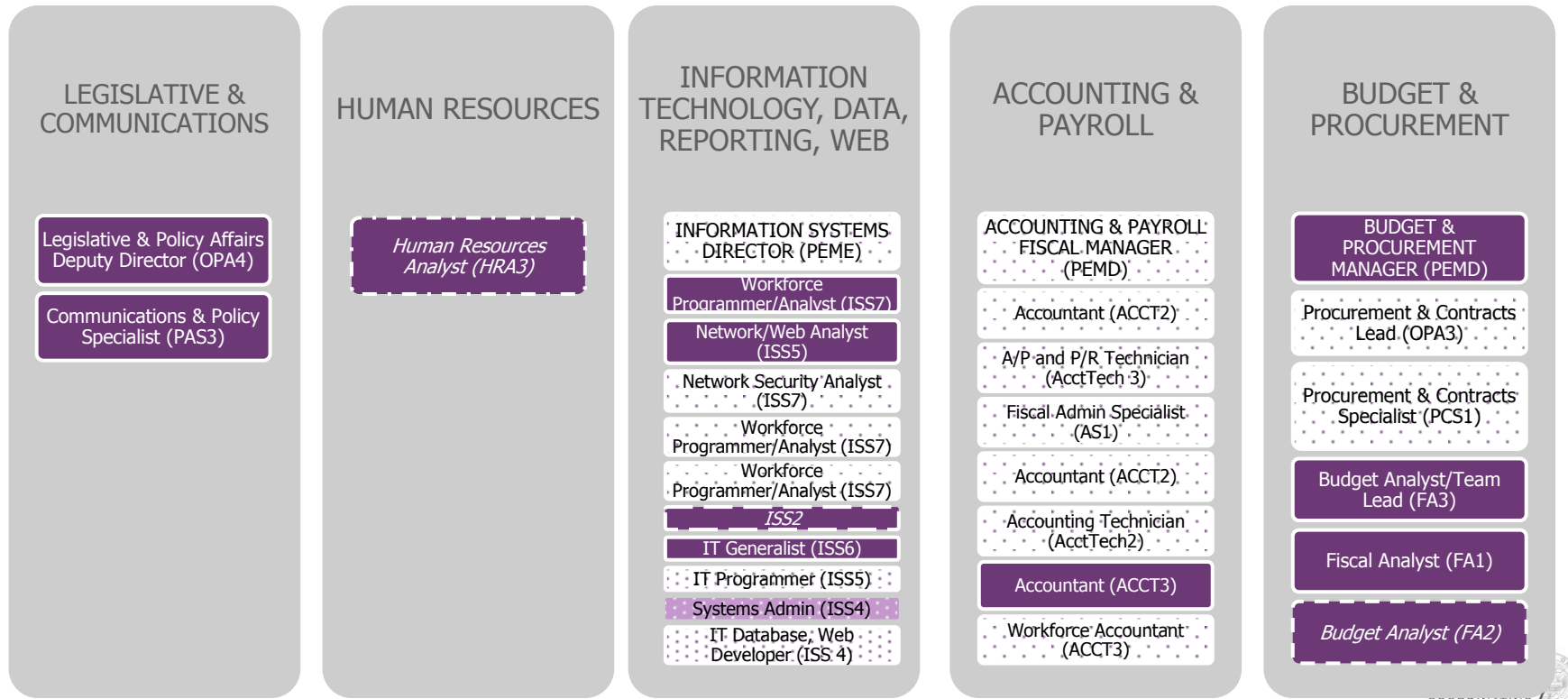
Assistant to the Director, Commission Administrator (ESS2)

## HECC CHIEF OF STAFF (PEMG)

Executive Team Support Specialist (ESS2)

## HECC OPERATIONS DIRECTOR (PEMF)

Executive Support Specialist (ESS2)



Full time
Part time
POP request
50%+ Federal/Other Funds



# OFFICE OF RESEARCH AND DATA

RECOMMENDED FOR 2015-2017



16

HECC EXECUTIVE DIRECTOR

DIRECTOR, OFFICE OF RESEARCH & DATA (PEME)

Admin Specialist (AS2)

## DATA SYSTEMS, RESEARCH, AND REPORTING

Research Policy Analyst (OPA4)

Research Analyst (RA4)

*Inst Research Systems Analyst (ISS7)*

*Inst Research Systems Analyst (OPA4)*

*Senior Inst Research Systems Analyst (OPA4)*

*Inst Research Systems Analyst (RA4)*

*Performance Measurement Specialist (RA3)*

Full time

Part time

POP request

50% + Federal/Other Funds



# OFFICE OF STUDENT ACCESS AND COMPLETION

RECOMMENDED FOR 2015-2017



17

HECC EXECUTIVE DIRECTOR

OSAC EXECUTIVE DIRECTOR (PEMF)

Scholarship Technical Specialist (ESS2)

OSAC CHIEF OPERATING OFFICER (PEMD)

## SCHOLARSHIP PROGRAMS

Scholarship Program Administrator (PA2)

Research Analyst (RA2)

Portfolio Coordinator (AS2)

Portfolio Coordinator (AS2)

Portfolio Coordinator (AS2)

Support Specialist (OS1)

## ASPIRE PROGRAM

ASPIRE & Outreach Administrator (PA2)

ASPIRE & Outreach Technical Assistant (OS2)

Developer (PA1)

Access Specialist (PA1)

Access Specialist (PA1)

Access Specialist (PA1)

Access Specialist (PA1)

Office Specialist (OS1)

Training/Development Spec.

ASPIRE Expansion CACG Prog Asst (OS2)

ASPIRE Expansion Access Spec (PA1)

ASPIRE Expansion Training/Dev Specialist (TDS1)

Limited Duration

## OREGON OPPORTUNITY GRANT & PUBLIC PROGRAMS

State Grants and Government Affairs Administrator (PA3)

Grants Administrator (PA1)

## FAFSA OUTREACH

Training/Development Spec. (TDS1)

Outreach Spec. (PA1)

Outreach Spec. (PA1)

Outreach Spec. (PA1)

Limited Duration

Full time

Part time

POP request

50%+ Federal/Other Funds



# OFFICE OF COMMUNITY COLLEGES AND WORKFORCE DEVELOPMENT

RECOMMENDED FOR 2015-2017



HECC EXECUTIVE DIRECTOR

DIRECTOR, EMPLOYMENT DEPARTMENT

CCWD DIRECTOR (PEMH)

Director Support Specialist (ESS2)

WORKFORCE DIVISION DIRECTOR (PEMG)

Workforce Admin Specialist (AS2)

EDUCATION DIVISION DIRECTOR (PEME)

WORKFORCE INITIATIVES MANAGER (PEMD)

CORE INITIATIVES & PROGRAMS MANAGER (PEME)

**COMMUNITY COLLEGE EDUCATION DIVISION:**  
Transitions, Dual Credit, Program Approval, Career Pathways, Distance Learning

CC Team Lead/CTE Education Specialist (EPS2)

Postsecondary Education Program Specialist (EPS2)

Program & Research Analyst (OPA4)

**ADULT BASIC SKILLS (ABS):** Title II, ABS, Career Technical, GED, ESL

ABS Director/Team Lead Ed (EPS2)

ABS/CC Team Admin Specialist (OS2)

Receptionist/Office Specialist (OS1)

ABS Education Specialist (EPS2)

ABS/CTE Education Specialist (EPS2)

Title II Program Analyst (PA3)

GED Administrator Ed Specialist (EPS2)

**WORKFORCE INITIATIVES:**  
Oregon Youth Conservation Corps

OYCC Director (PA4)

OYCC Program Analyst (PA1)

**WORKFORCE YOUTH PROGRAM**

Youth Programs Project Manager (PM3)

Youth Prog. Admin Spec. (AS2)

Youth Prog. Ed Program Spec. (EPS1)

Youth Prog. Procurement & Contract Spec. (PCS2)

**INCUMBENT WORKER TEAM**

Incumbent Worker Project Manager (PM3)

Admin Spec. (AS2)

**WORKFORCE OPERATIONS:**  
Dislocated Worker, WIA Title IB

Workforce Operations (PA3)

WIA TIB Monitoring & Compliance (PA3)

Workforce Program Analyst (PA3)

Dislocated Worker Prog. Analyst (PA3)

Workforce Program Analyst (PA3)

OWIB Program Staff (ESS2)

OWIB Analyst (PA3)

OWIB Program Policy Staff (OPA4)

**CORE INITIATIVES AND PROGRAMS**

Workforce Operations & Policy Analyst (OPA4)

WF Support Office Spec. (OS2)

Workforce Admin. Spec. (AS2)

Workforce Prog. Analyst (PA3)

Workforce Ed Specialist (EPS2)

Workforce Program Analyst (PA3)

Workforce Program Analyst (PA4)

Full time

Part time

POP request

50% + Federal/Other Funds

# OFFICE OF UNIVERSITY COORDINATION

RECOMMENDED FOR 2015-2017



19

## HECC EXECUTIVE DIRECTOR

### DIRECTOR, ACADEMIC STRATEGIES (PEMG)

**ACADEMIC STRATEGIES:** Student Transitions, Academic Pathway and Initiatives (Dual Credit, others), Degree and Program Approvals, Institution Evaluations

Acad & Student Affairs Policy Specialist (OPA4)

Education Program Specialist (EPS2)

Education Program Specialist (EPS2)

### DIRECTOR, BUDGET AND FINANCE (PEMF)

**BUDGET & FINANCE:** University Budget Development, Planning, and Analysis, Funding Allocations, Capital

Fiscal Analyst (FA3)

Fiscal Analyst (FA3)

Full time

Part time

POP request

50% + Federal/Other Funds

# OFFICE OF PRIVATE POSTSECONDARY

RECOMMENDED FOR 2015-2017



20

HECC EXECUTIVE DIRECTOR

DIRECTOR, PRIVATE POSTSECONDARY (PEME)

*Coordinator of Acad Evaluation, Distance & Private Ed Systems  
(EPS2)*

## OFFICE OF DEGREE AUTHORIZATION

College & University Prog Specialist (PA2)

Distance Ed Coordination & Policy Analyst (PA1)

Office Specialist (OS1)

## PRIVATE CAREER SCHOOLS

PCS Office Specialist (OS2)

Administrative Specialist (AS2)

Academic Prog Specialist (EPS1)

Academic Prog Specialist (PA2)

## VETERANS EDUCATION

Veterans Ed Specialist State Approving Agency (EPS1)

Veterans Office Specialist (OS2)

Full time

Part time

POP request

50% + Federal/Other Funds

# CENTER FOR COMMUNITY INNOVATION

RECOMMENDED FOR 2015-2017



21

## HECC EXECUTIVE DIRECTOR

*EXECUTIVE DIRECTOR, CENTER FOR COMMUNITY INNOVATION (PEMG)*

Office Specialist (OS2)

### POLICY AND PROGRAMS

*Director of Policy & Programs (PEMF)*

*Grant Manager (PA4)*

*Program Coordinator (PA2)*

### COMMUNICATIONS AND OUTREACH

*Comm., Outreach, and Engagement Specialist (PFME)*

Full time

Part time

POP request

Other Funds

# TRANSFER TO HECC, POP 100

22

- Public universities state appropriations, including statewide public services, state programs, and Sports Action Lottery.
- CCWD state appropriations, including Community College Support Fund (included via HECC's essential budget Package 060).
- OHSU debt service.
- OSAC to the HECC's agency budget.
- The HECC's statutory responsibilities:
  - propose a comprehensive higher education budget
  - oversee funding allocations for community colleges, universities, and Oregon Opportunity Grants
  - oversee the Office of Student Access & Completion

# HECC MANAGEMENT STREAMLINING AND ORGANIZATIONAL NEEDS, POP 301

23

- Combining the HECC, OSAC and CCWD into one agency creates opportunities to co-locate and bring services in-house.
- Provide agencywide efficiencies, stability and consistency via in-house IT, budget, accounting, payroll and human resources.
- Costs are largely offset by savings realized by no longer retaining DAS Client Services and additionally redirects resources for contracted Internal Audit services.

# INTEGRATED RESEARCH AND DATA TEAM, POP 303

24

- \$700,000 in the May 2014 eBoard (Package 081) allowed the HECC to contract with the OUS research team for the remaining 2013-15 biennium (\$700,000 rolls up to \$1,400,000 2015-17).
- Converts into 5 research positions and combines with the existing CCWD 4 research staff to become an integrated research team.
- Will manage the state's higher education data (from institutions) and respond to research requests from campuses, the HECC, Legislature, and others.



# POSTSECONDARY ASSOCIATION MEMBERSHIPS, POP 304

25

- Reflects new responsibility to maintain the State's membership in national organizations providing important benefits for policymakers, institutions, and students; previously maintained by OUS.
- 80+ percent relates to Oregon's membership dues in Western Interstate Commission on Higher Education (WICHE).
- Remaining dues are associated with the Education Commission of the States and the State Higher Education Executive Officers Association (SHEEO) who provide policy tools and resources to legislators, legislative staff, state boards/commissions, and agency staff.

# CCWD WORK RECONCILIATION, POP 311

26

- Over the last few biennia, the composition of work and programs at CCWD has changed.
- 2013-15 CCWD was funded for 8.65 FTE of General Fund work, yet in reality performs over 13 FTE of General Fund work and was granted additional General Fund appropriation in the February 2014 Session to reflect this change.
- This mix of work continues and this funding shift correctly increases General Fund from 8.65 FTE currently to 13.45 FTE of total 58.70 FTE.

# OSAC IT NEEDS, POP 313

27

- OSAC is the federally-designated repository for Oregon resident FAFSA data (Free Application for Federal Student Aid), the Oregon Opportunity Grant managing authority, and administrator of nearly 500 privately-funded scholarships.
- To perform handling sensitive student data from hundreds of thousands of Oregon residents annually, OSAC relies heavily on a robust, secure, and reliable Information Technology infrastructure.
- A one-time capital expenditure to replace the agency's aging and unstable Financial Aid Management System, a critical component in linking OSAC student records to the proposed State Longitudinal Database.

# CONCLUDING REMARKS, THANK YOU FROM THE COMMISSION

28



Higher Education Coordinating Commission

**TIM NESBITT**  
Chair

**BETTY DUVALL**  
Vice-Chair

**NEIL BRYANT**

**KIRBY DYESS**

**RAMON RAMIREZ**

**DAVID RIVES**

**LARRY ROPER**

**CARMEN RUBIO**

**DUNCAN WYSE**

*Non-voting members:*

**LEE AYERS-PREBOSKI**

**ROB FULLMER**

**FRANK GOULARD**

**ANAYELI JIMENEZ**

**LAMAR WISE**

