

# TriMet's Strategic Direction

Neil McFarlane  
General Manager

Senate Committee on Business and Transportation

April 8, 2015



# TriMet At A Glance

- 100 million rides per year
- 78% of riders *choose* TriMet
- 45% of rush-hour commuters going to Downtown Portland take transit
- 24th largest Metro area; 9th per capita ridership

# TRI MET

## Bus and Rail System



**Bus Service**

- Frequent Service
- Standard Service
- Rush-Hour Service

**Rail Service**

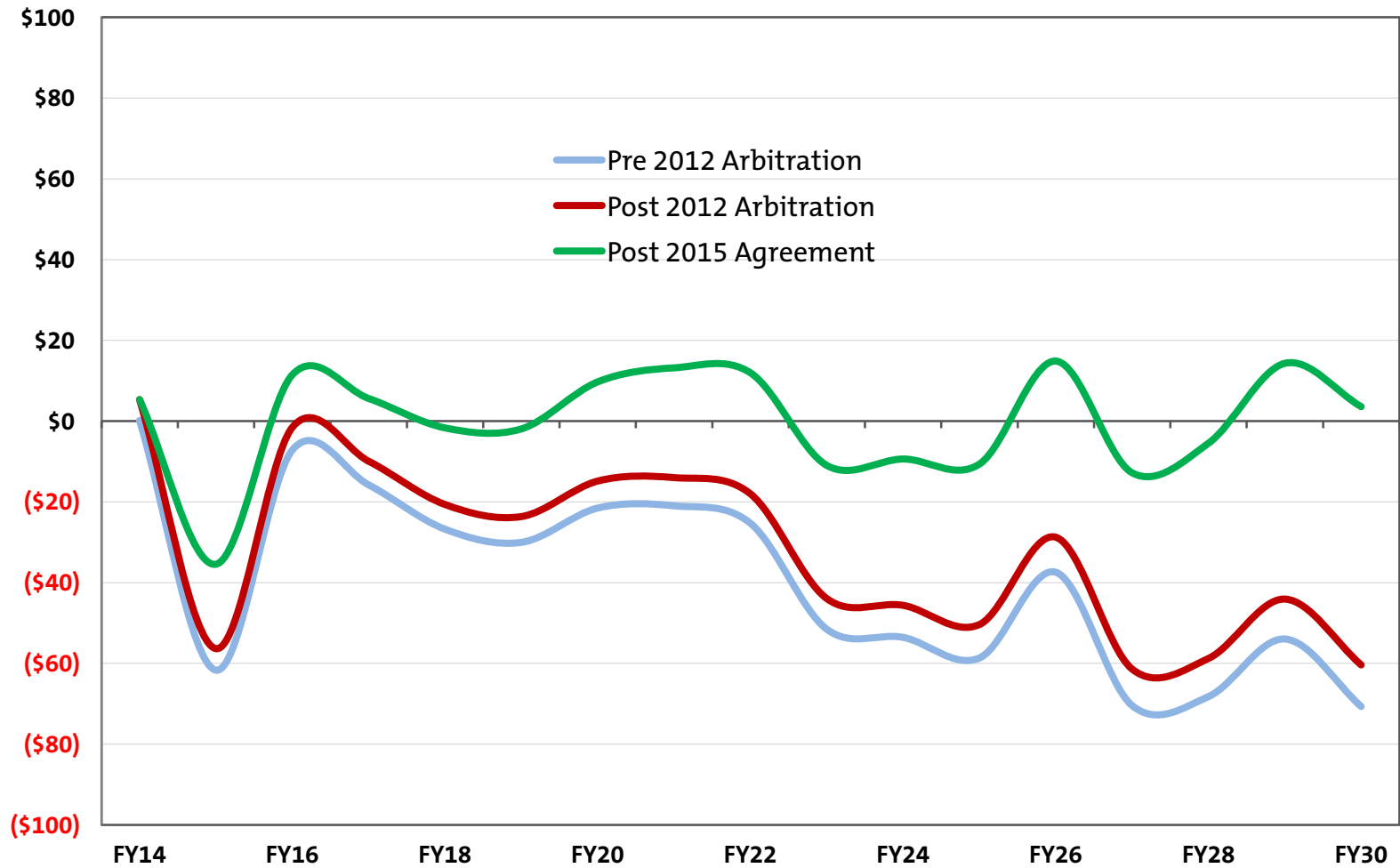
- MAX Blue Line  
Hillsboro/City Center/Gresham
- MAX Green Line  
Clackamas/City Center/PSU
- MAX Orange Line  
Milwaukie/City Center
- MAX Red Line  
Airport/City Center/Beaverton
- MAX Yellow Line  
Epo Center/City Center/PSU
- WES Commuter Rail  
Beaverton/Wilsonville

**Landmarks**

- Park & Ride
- Secure Bike Parking
- Transit Center
- High School or College
- Hospital
- Library

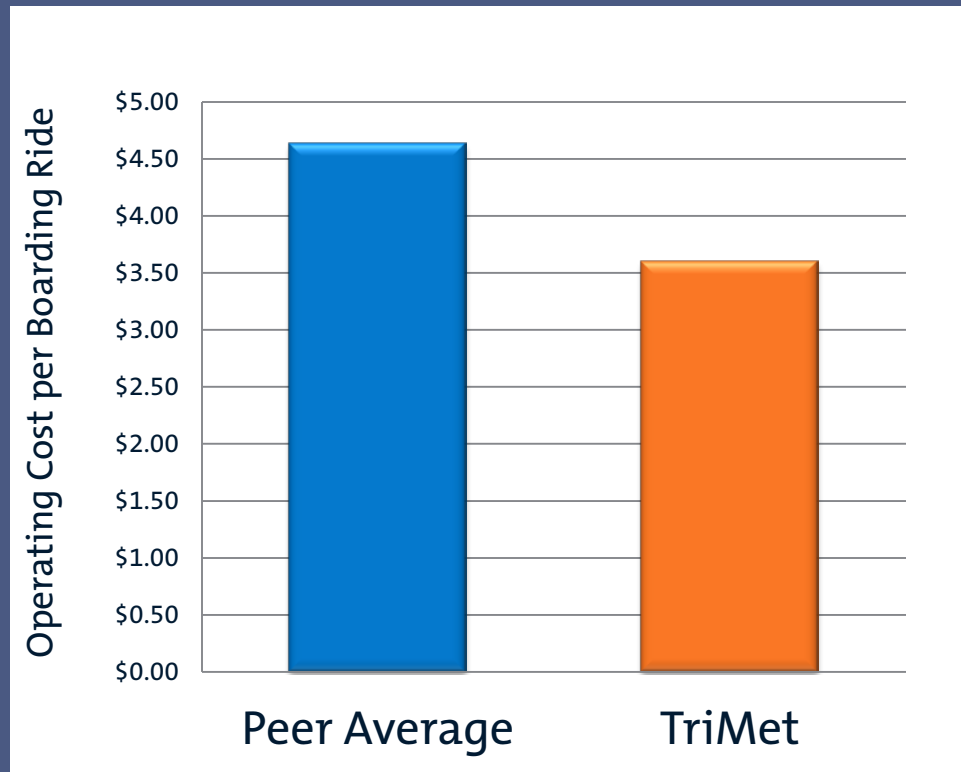
0 1 2 Miles  
NORTH

# Revenues minus Expenditures Pre and Post 2012 Arbitration and 2015 Agreement (millions)



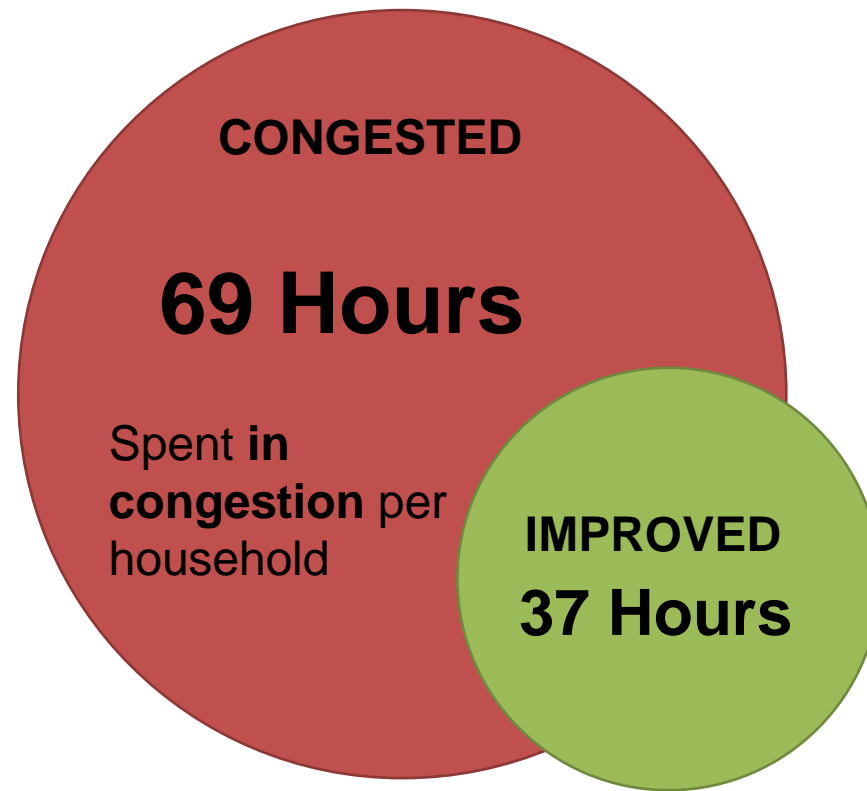
# TriMet's Operations are more Cost-Effective

- Lower cost per hour + higher ridership per hour = better cost-effectiveness
- TriMet's operation cost per rider is about 22% below the peer average.



# Comparing the Alternatives

## PORTLAND REGION





TRI  MET



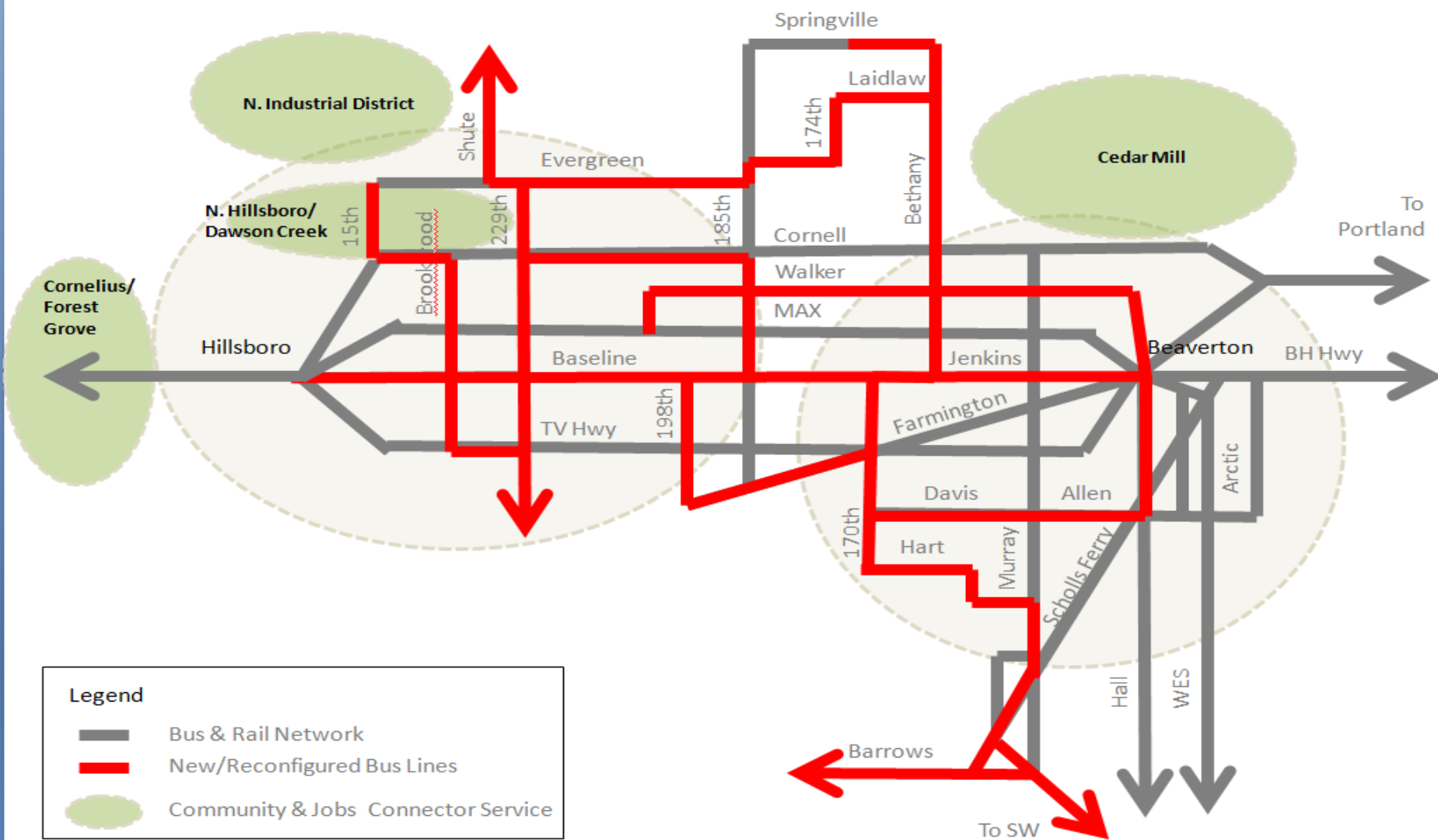
TRI  MET



# Improving the Rider Experience



# Westside Transit Network with Improved Bus Service



## Future of Transit: Service Enhancement Plans

Future Network: Complete the grid of transit

Thank you!



TRI  MET