

# Oregon Water Resources Department 2015-17 Budget Presentation to:

Joint Ways & Means Natural Resources Subcommittee

Presented by: Tom Byler, Director  
April 2015



# Chapter 1: Agency Overview



# Chapter 1: Historical Perspective

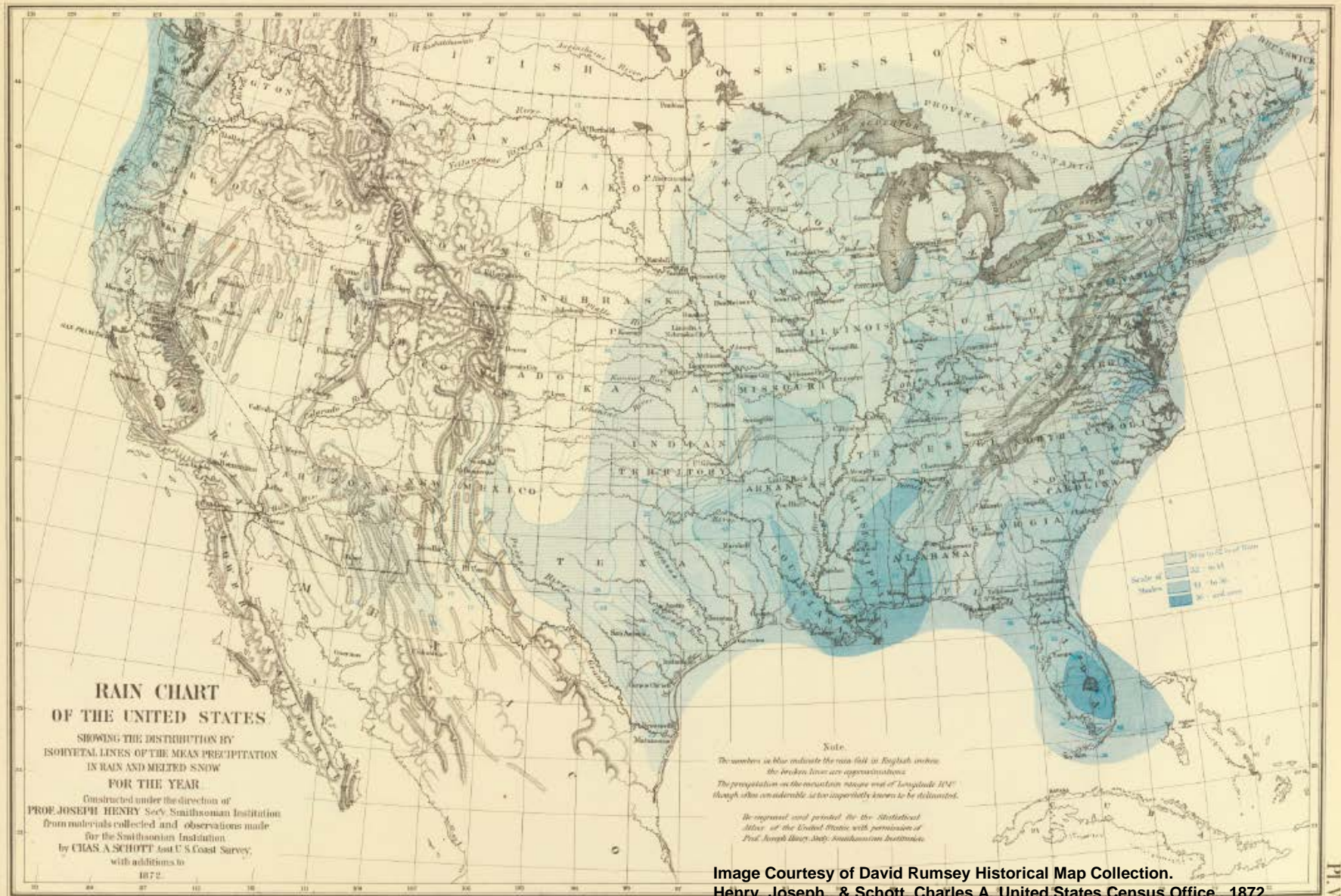


Image Courtesy of David Rumsey Historical Map Collection.  
Henry, Joseph, & Schott, Charles A. United States Census Office., 1872.  
<http://www.davidrumsey.com/luna/servlet/s/9ov5g1>

# Chapter 1: Historical Perspective

Shirt Tail Gulch

Notice

Is hereby given that I the undersigned have this day taken up and claim five hundred acres of the <sup>water of the</sup> Gulch known as Shirt Tail Gulch and all its tributaries for Mining Mechanical and Agricultural purposes

Dated May 30<sup>th</sup> 1878

Baker County  
Oregon

Wm. Blain

Image Courtesy of Baker Heritage Museum. William Blain, Shirttail Gulch, May 30, 1878. G. W. Parker, clerk, by I. D. Parker, deputy. [www.bakerheritagemuseum.com](http://www.bakerheritagemuseum.com)

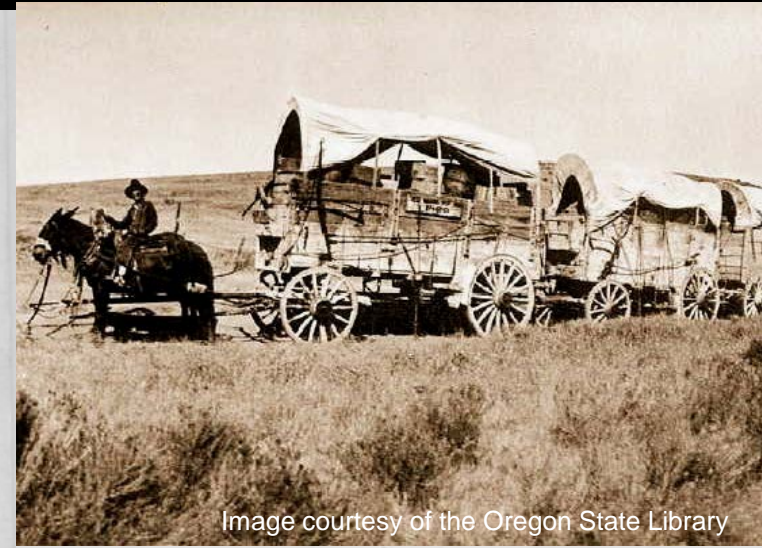


Image courtesy of the Oregon State Library

Image Courtesy of Oregon Institute of Technology Library



# Chapter 1: 1909 Water Code & Prior Appropriation

**“All water within the state belongs to the public.”**

## STATE OF OREGON

WATER DIVISION NO. COUNTY OF BENTON

### CERTIFICATE OF WATER RIGHT

(For rights perfected under original, enlargement or secondary permits)

**This is to Certify, That** WATER COMMISSION OF THE CITY OF CORVALLIS

of **Corvallis**, State of **Oregon**, has made proof to the satisfaction of the STATE WATER BOARD of Oregon, of a right to the use of the waters of **Rock Creek**, a tributary of **Mary's River**

, for the purpose of **Municipal supplies**

under **Permit No. 3979** of the State Engineer, and that said right to the use of said waters has been perfected in accordance with the laws of Oregon and duly confirmed by order of the STATE WATER BOARD of Oregon, made and entered

of record in the Record of Proceedings of said Board, at Salem, in Volume **1**,

at page **389**, on the **13th** day of **April, 1921**; that the priority of

the right hereby confirmed dates from **January 7, 1919**; that the amount of water to which such right is entitled and hereby confirmed, for the purposes aforesaid, is limited to an amount actually beneficially used for said purposes, and shall not

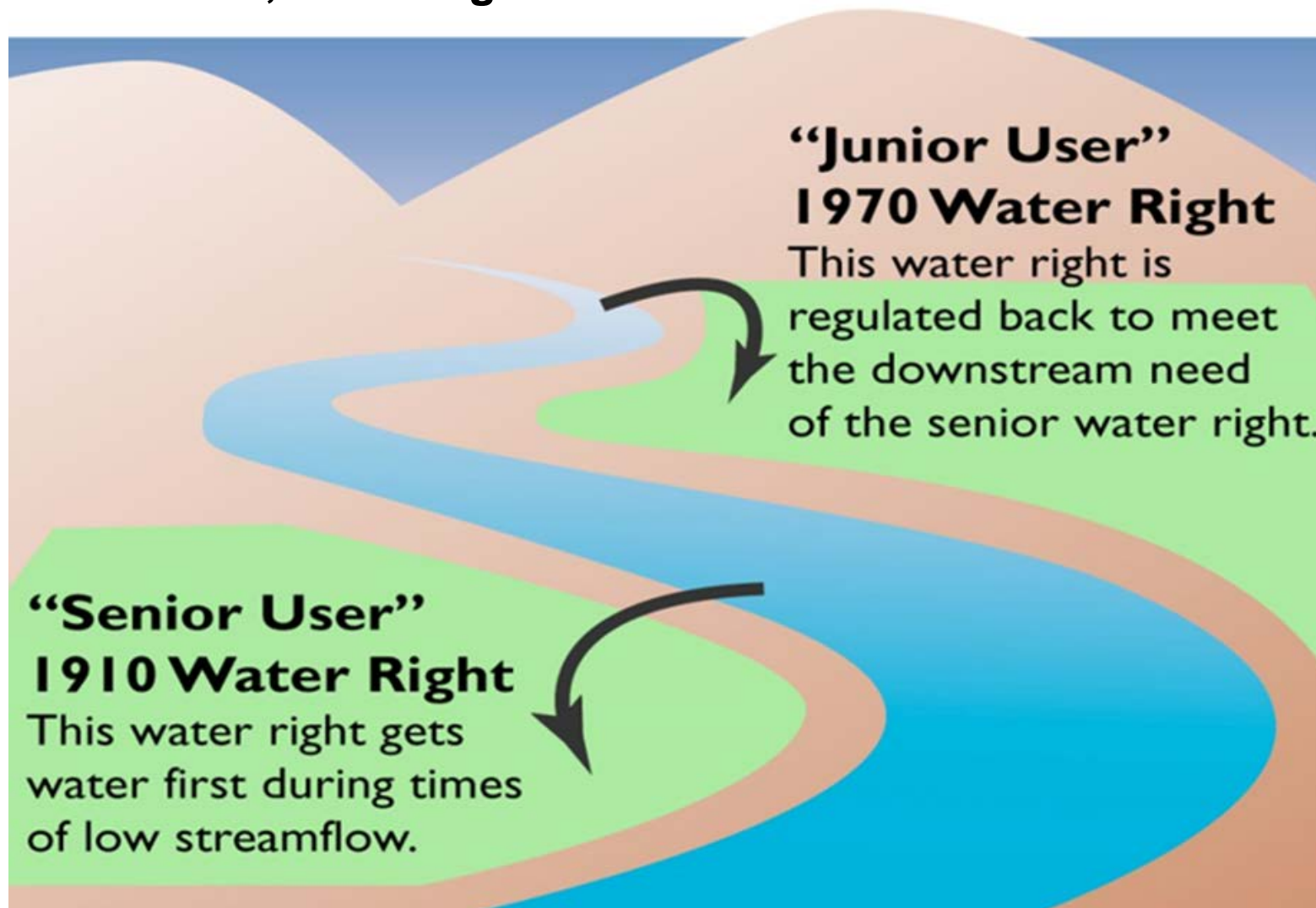
exceed **1.50** cubic feet per second.

A description of the lands under such right, and to which the water hereby confirmed is appurtenant, or, if for other purposes, the place where such water is put to beneficial use, is as follows: **The City of Corvallis, in Benton County, Oregon.**

- **Beneficial use without waste**
- **Must be used**
- **Appurtenancy**
- **First in time, first in right**

# Chapter 1: 1909 Water Code & Prior Appropriation

First in time, first in right.



# Chapter 1: Advancements in Oregon Water Law

**1909: Oregon Water Code**

**1955: Oregon Ground Water Act**

**1987: Oregon Instream Water Rights Act**

**1989: Water Allocation Policy**



# Chapter 1: Mission

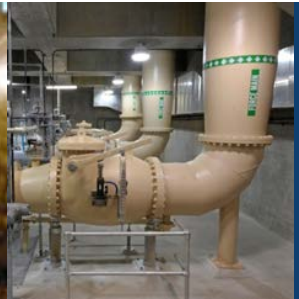
- **To serve the public by practicing and promoting responsible water management**





# Chapter 1: Co-Equal Goals

- To restore and protect streamflows in order to ensure the long-term sustainability of Oregon's ecosystem, economy, and quality of life
- To directly address Oregon's water supply needs



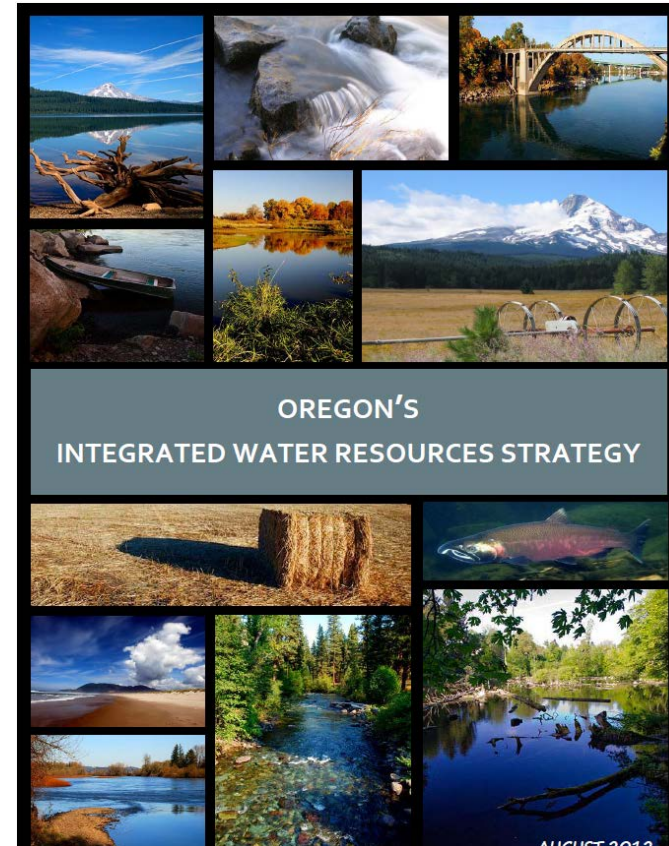
# Chapter 1: Key Strategies & Investments

## Strategies

- Understand Oregon's Water Needs
- Meet Oregon's Water Needs
- Manage Oregon's Water Resources

## Budget Investments

- Integrated Water Resources Development
- Strengthening Department Core Functions
- Helping Communities Solve Water Challenges

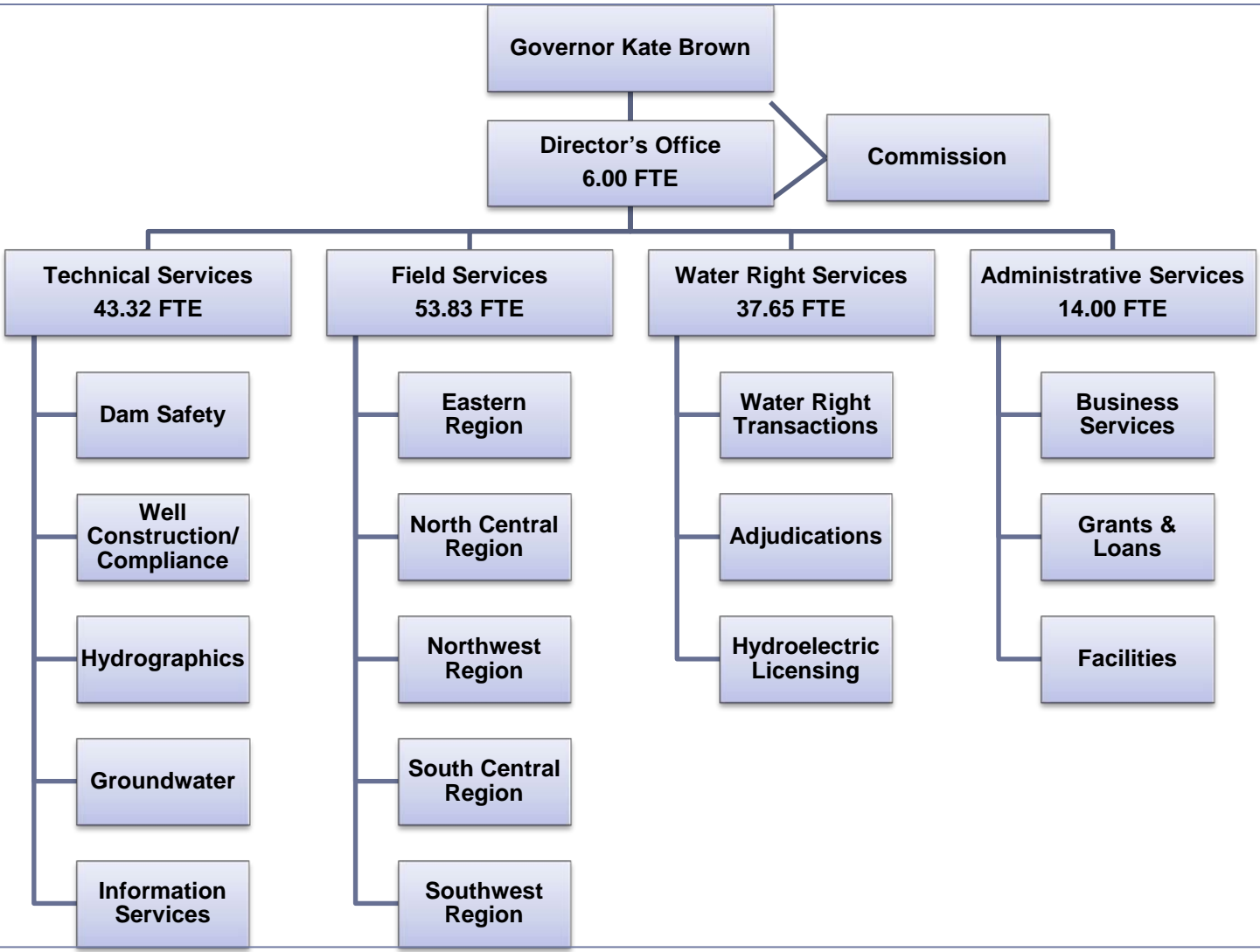


# Chapter 1: Water Resources Commission



- **Dennis Doherty (North Central)**
- **Bob Baumgartner (Northwest)**
- **John Roberts (Chair, Southwest)**
- **Ray Williams (Vice-Chair, East-Side at Large)**
- **Bruce Corn (Eastern)**
- **Jeanne LeJeune (West-Side at Large)**
- **Carol Whipple (West Central)**

# Chapter 1: Agency Organizational Chart



## Chapter 2: Divisions



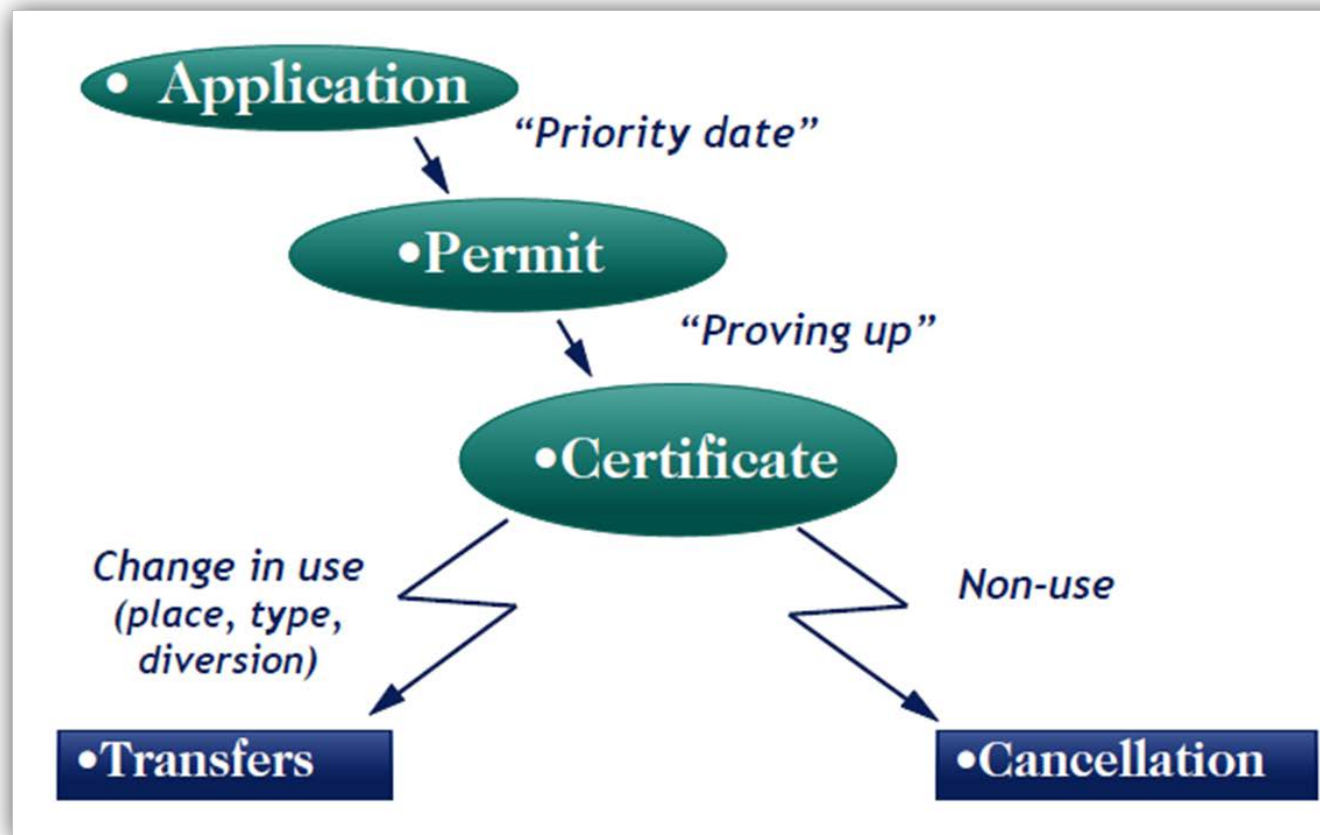
# Chapter 2: Director's Office

- Agency Policy Direction
- Intergovernmental Relations
- Communications
- Integrated Water Resources Strategy
- Performance Improvement
- Water Resources Development Program



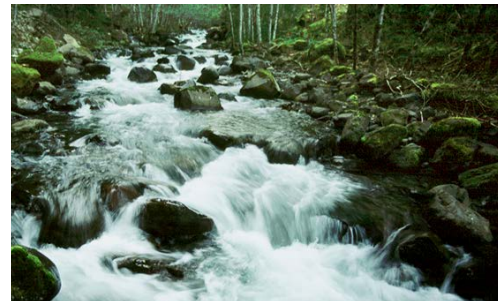
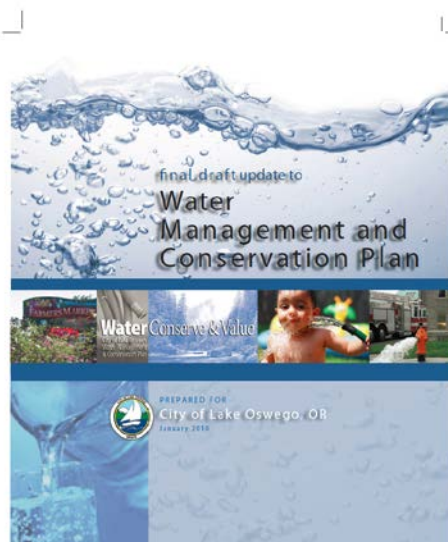
# Chapter 2: Water Right Services

- Water right applications
- Extensions
- Protests
- Certificates
- Transfers



# Chapter 2: Water Right Services

- Adjudication
- Streamflow restoration and conservation
- Water supply and conservation plans
- Hydroelectric

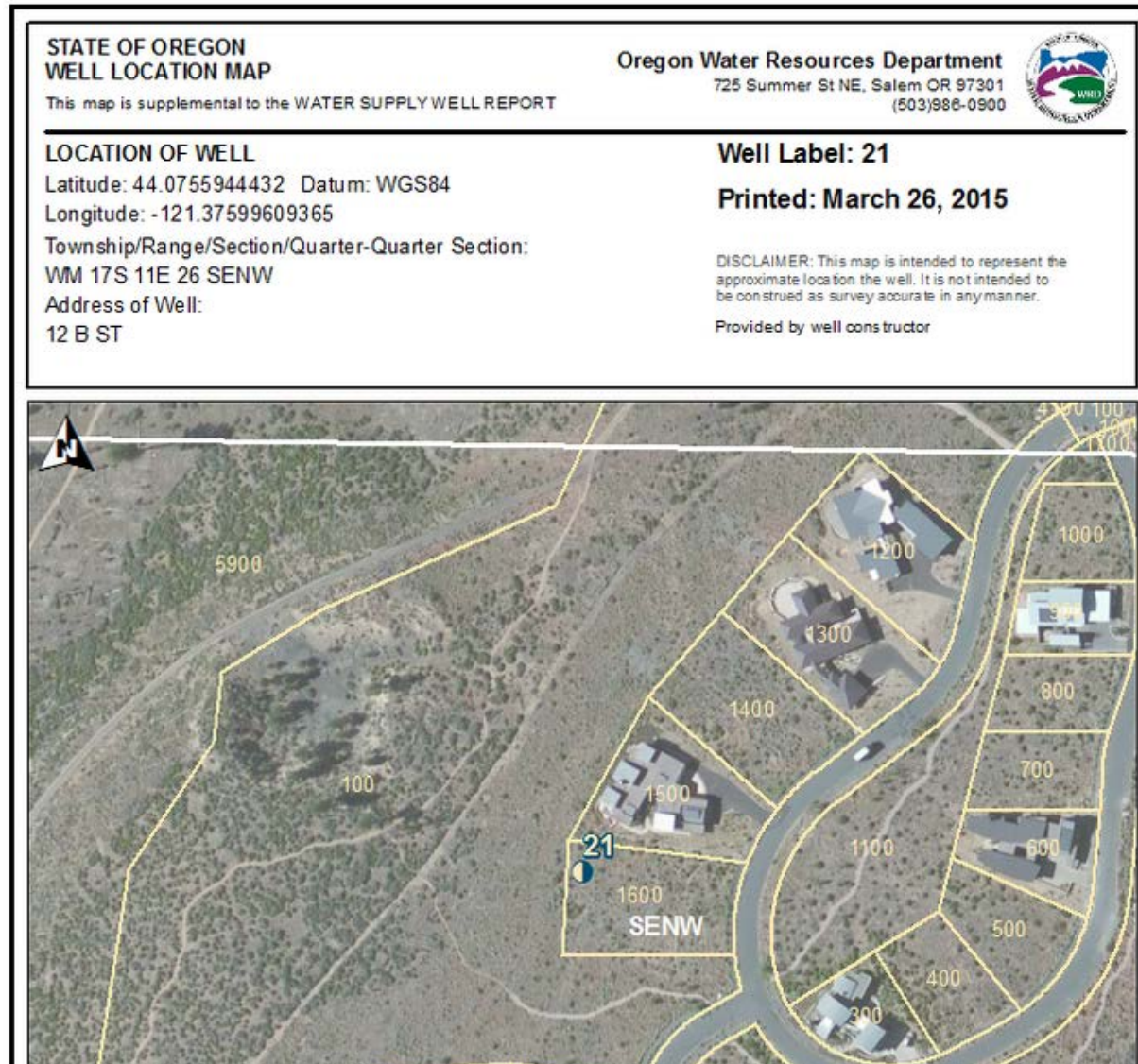




# Chapter 2: Technical Services Division

## Science, Engineering, and GIS/Programming

- Surface Water Science
- Groundwater Science
- Dam Safety
- Well Construction and Compliance
- Information Services



# Chapter 2: Field Services Division

- Water management and distribution
- Hydrologic measurements and dam inspections
- Community outreach and education



# Chapter 2: Field Services Division



## Regions and Watermaster Districts 2015

### District Offices

- 1 Tillamook
- 2 Eugene
- 3 The Dalles
- 4 Canyon City
- 5 Pendleton
- 6 La Grande
- 7 Enterprise
- 8 Baker City
- 9 Vale
- 10 Burns
- 11 Bend
- 12 Lakeview
- 13 Medford
- 14 Grants Pass
- 15 Roseburg
- 16 Salem
- 17 Klamath Falls
- 18 Hillsboro
- 19 Coquille
- 20 Clackamas
- 21 Condon



# Chapter 2: Administrative Services Division

- Grant and Loan Administration
- Water Development Loan Fund
- Fiscal Services
- Human Resources
- Business Services



# Chapter 3: Process Improvements



# Chapter 3: Process Improvements

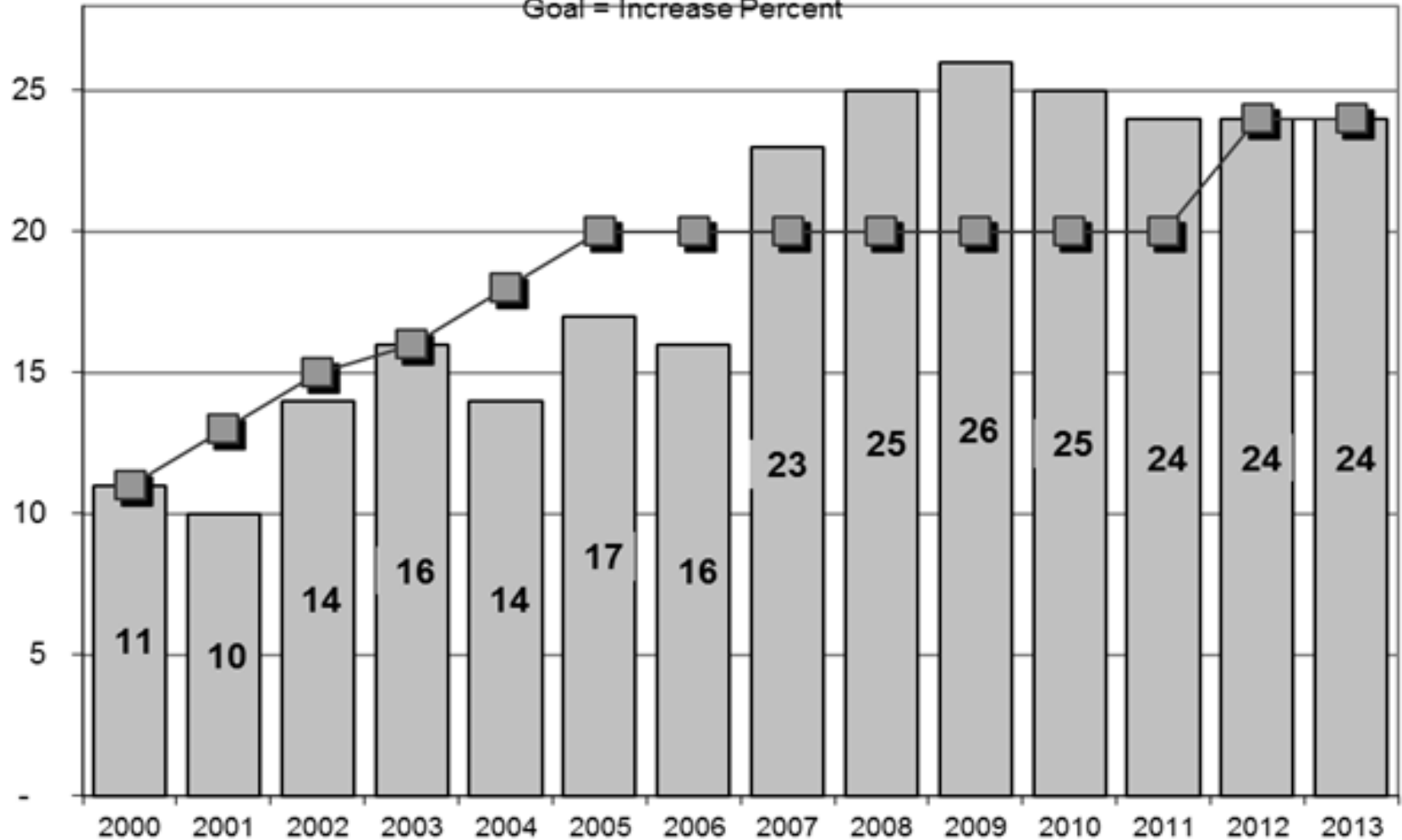
- **Weekly Public Notice**
- **Customer Service Sharepoint**
- **Lean-Kaizen**
- **Backlog Reduction**



# Chapter 3: KPM 1

## FLOW RESTORATION

Percent of Watersheds That Had Flows Added  
Where Needed for Fish  
Goal = Increase Percent



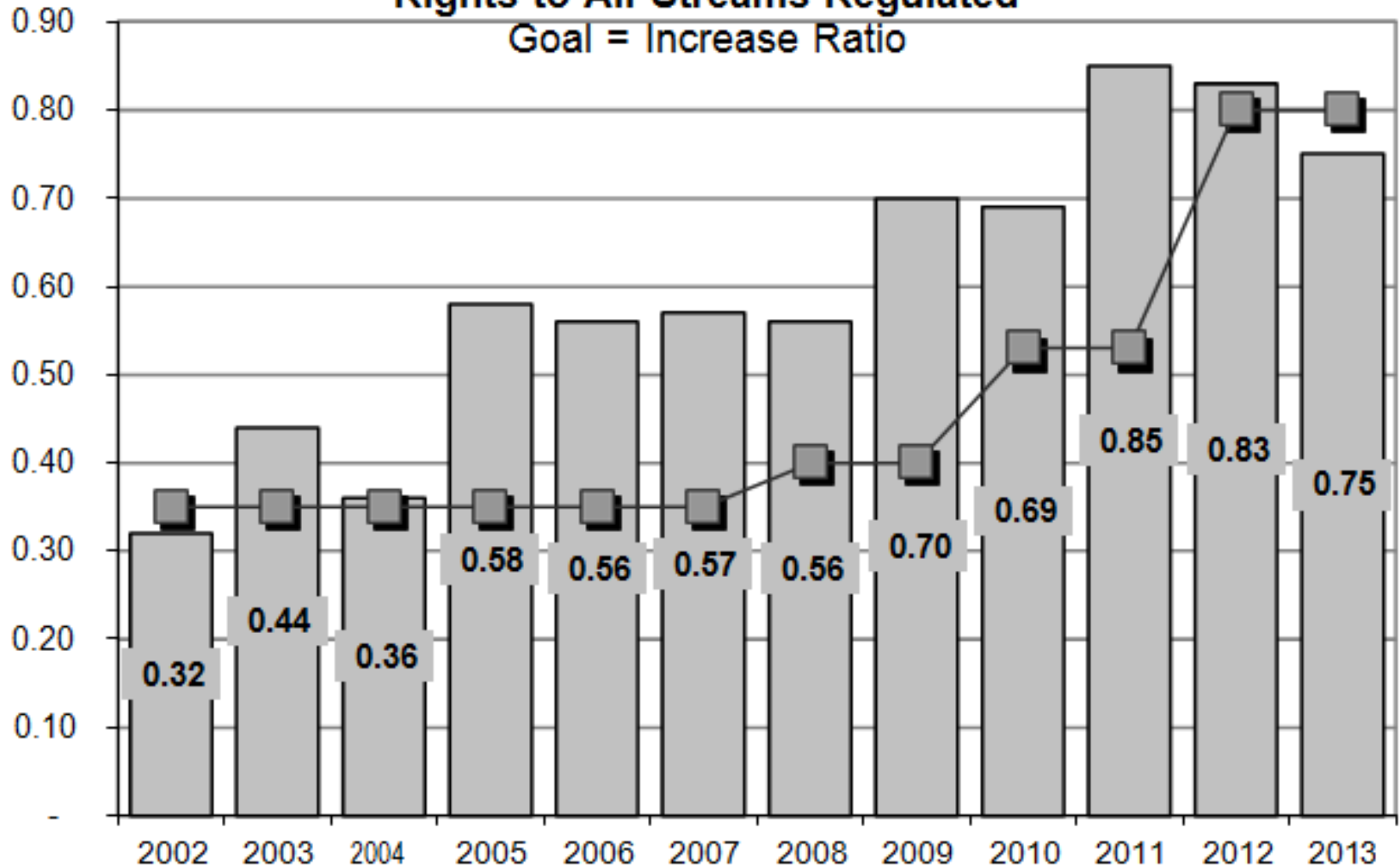
Bar is Actual – Line is Target

# Chapter 3: KPM 2

## PROTECTION OF INSTREAM WATER RIGHTS

Ratio of Streams Regulated to Protect Instream Water Rights to All Streams Regulated

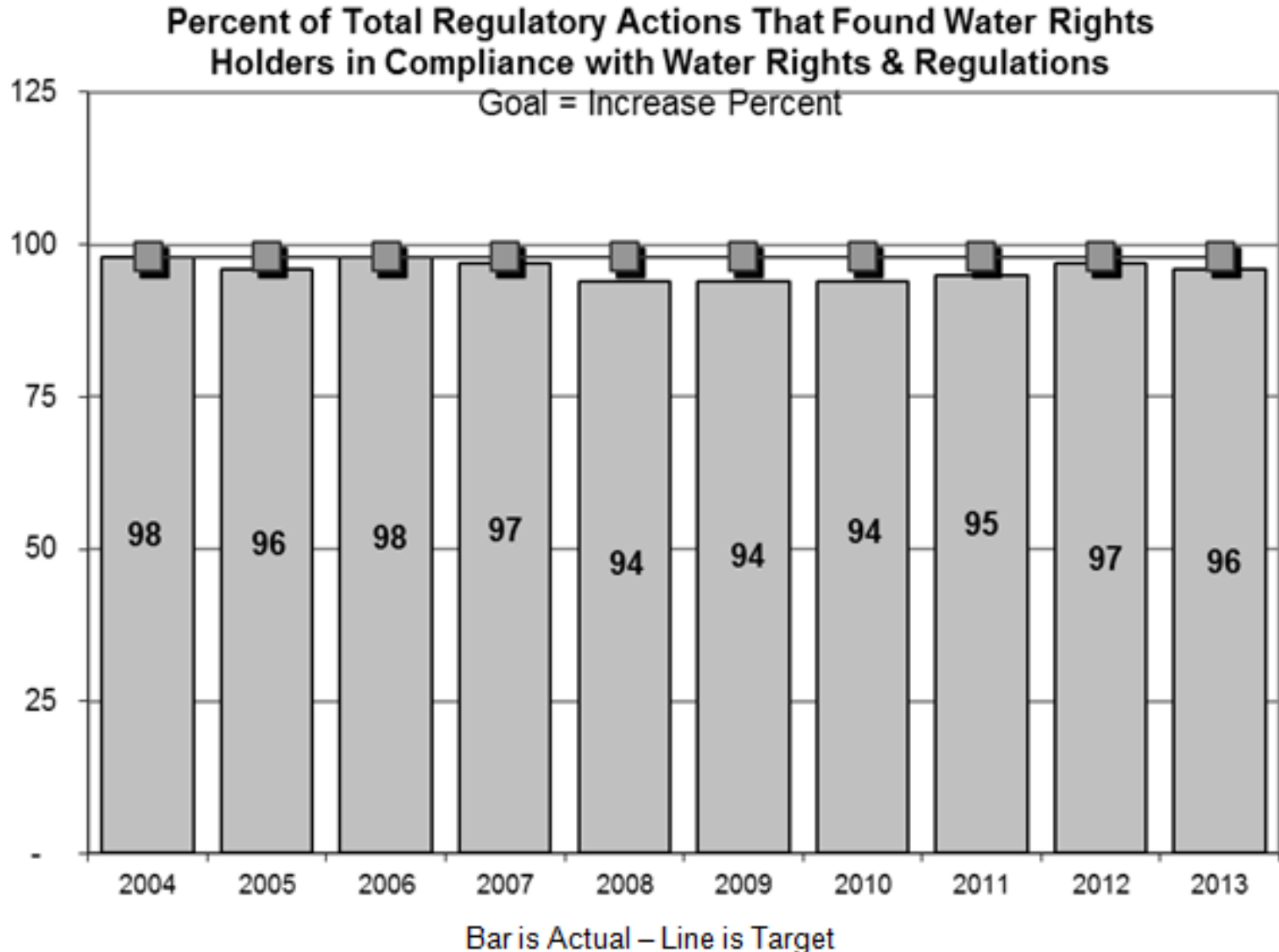
Goal = Increase Ratio





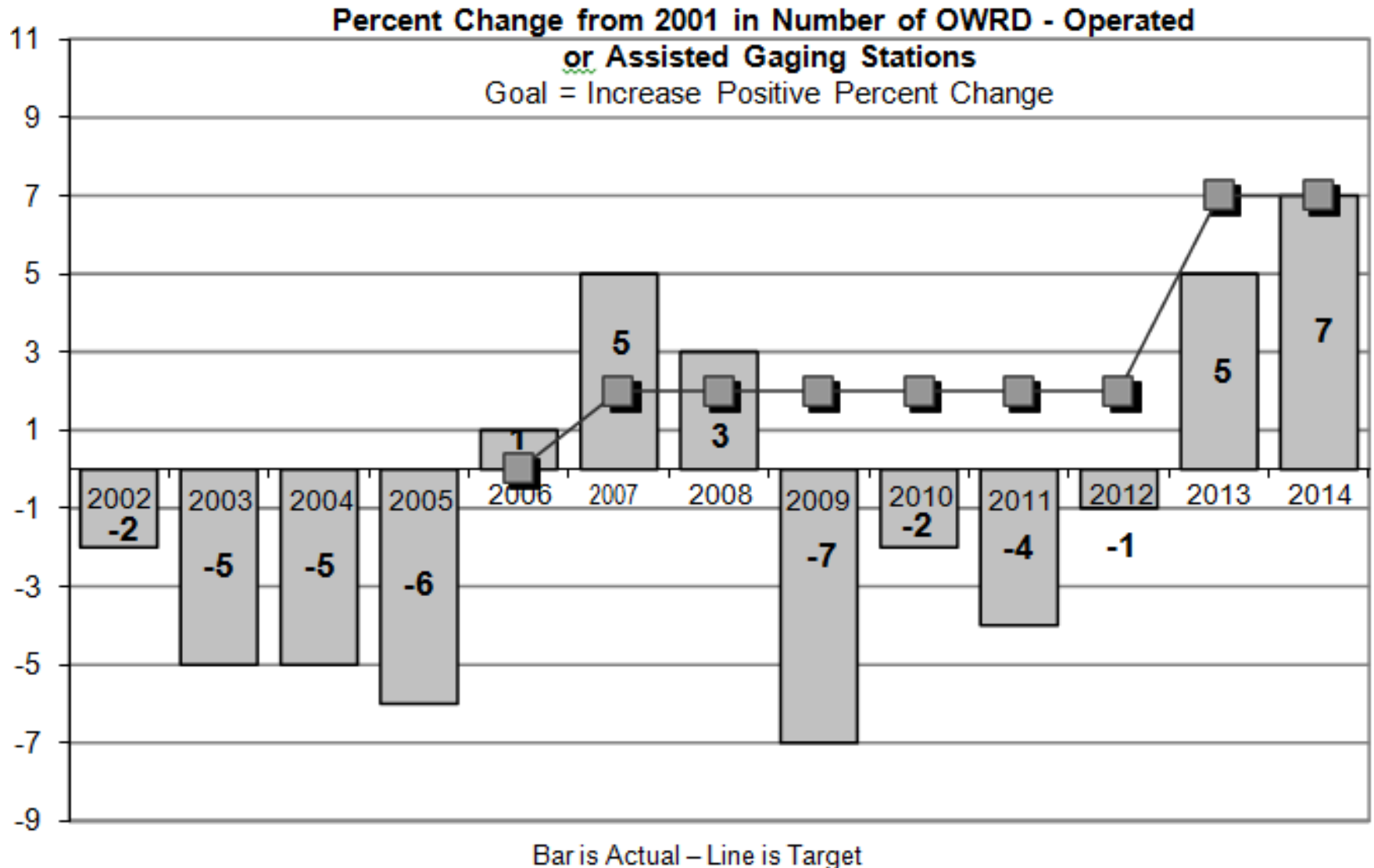
# Chapter 3: KPM 3

## MONITOR COMPLIANCE



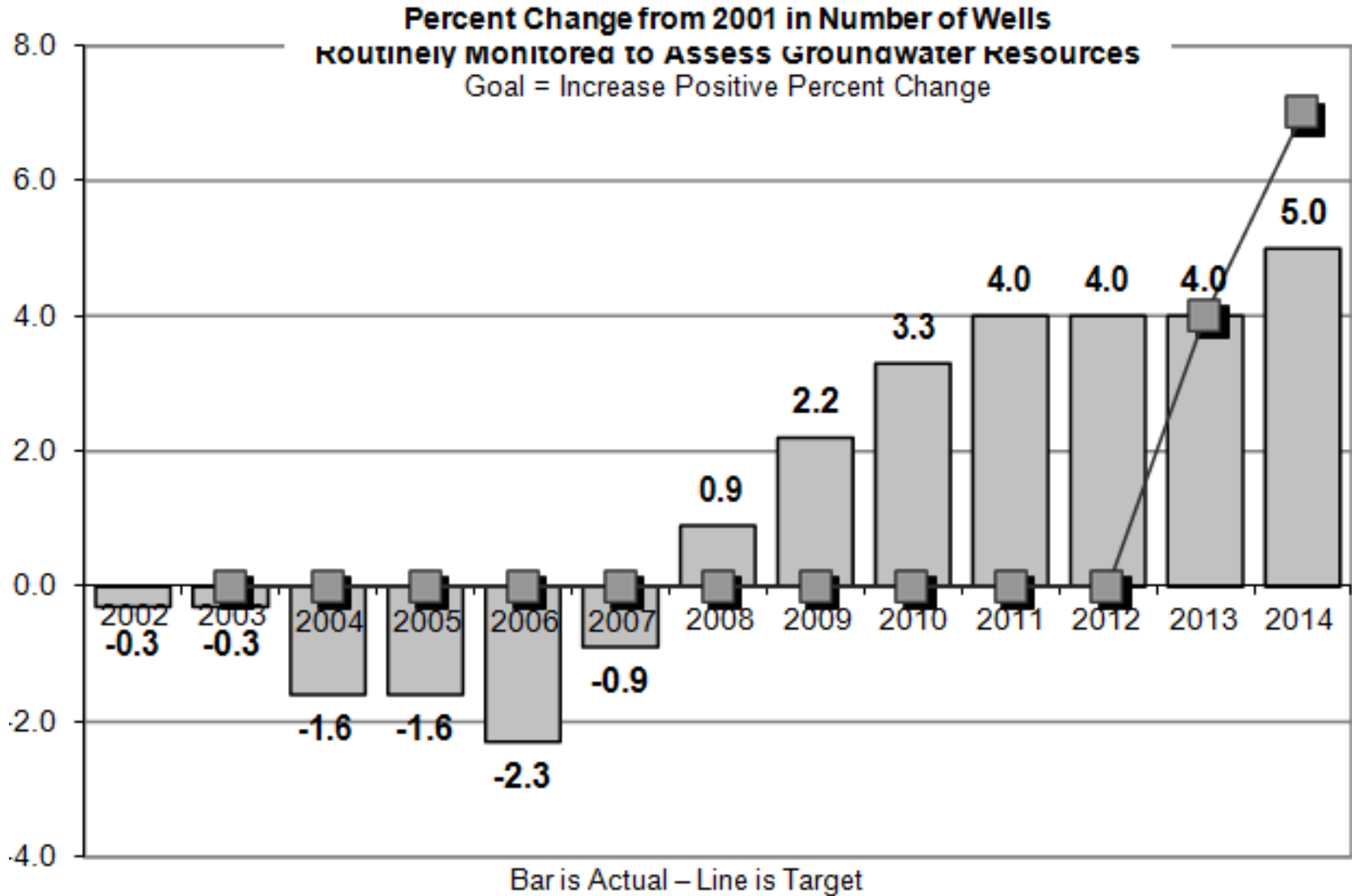
# Chapter 3: KPM 4

## STREAMFLOW GAGING



# Chapter 3: KPM 5

## GROUNDWATER MONITORING WELLS

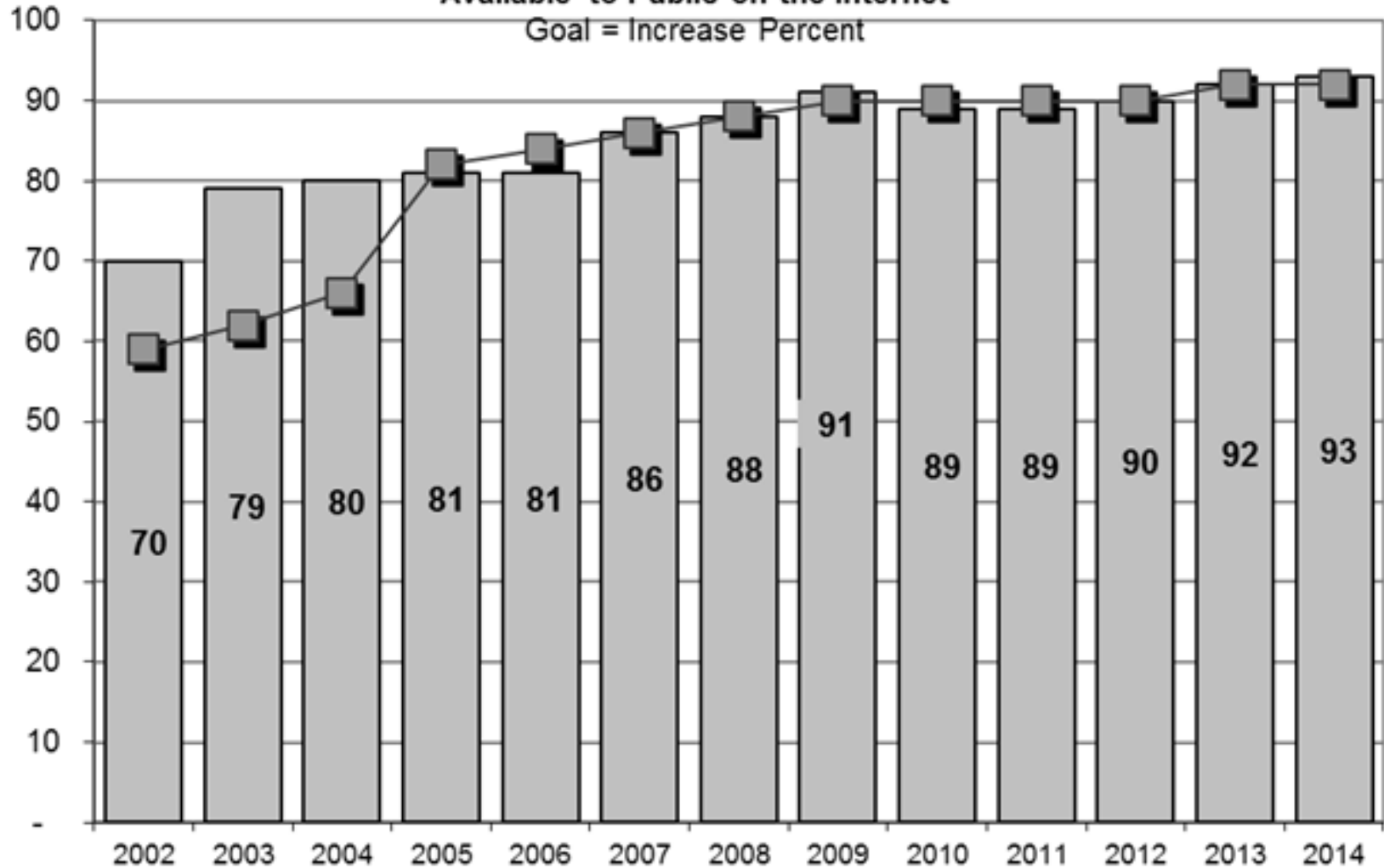


# Chapter 3: KPM 6

## EQUIP CITIZENS WITH INFORMATION

Percent of Water Management-Related Datasets Available to Public on the Internet

Goal = Increase Percent

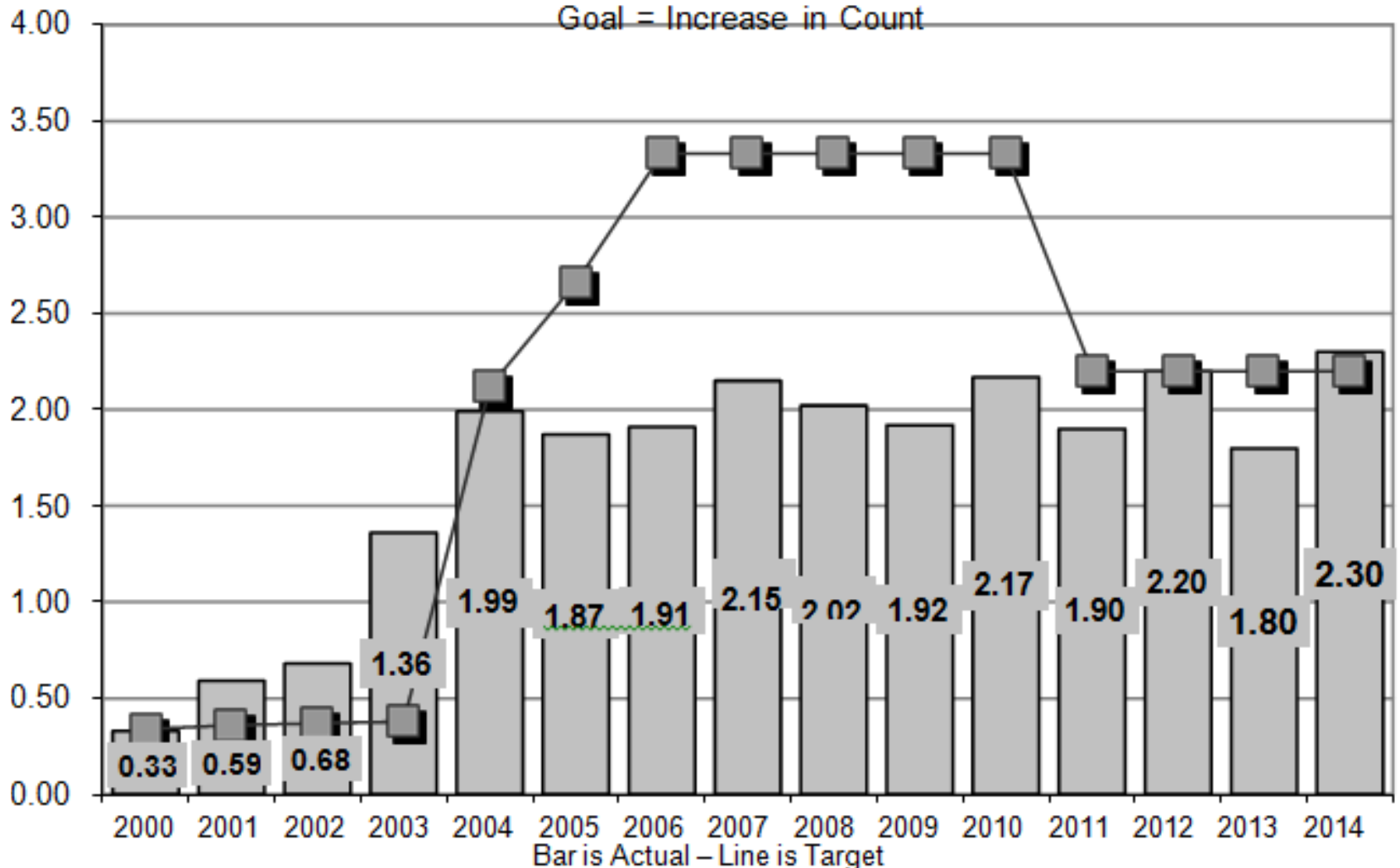


Bar is Actual – Line is Target

# Chapter 3: KPM 7

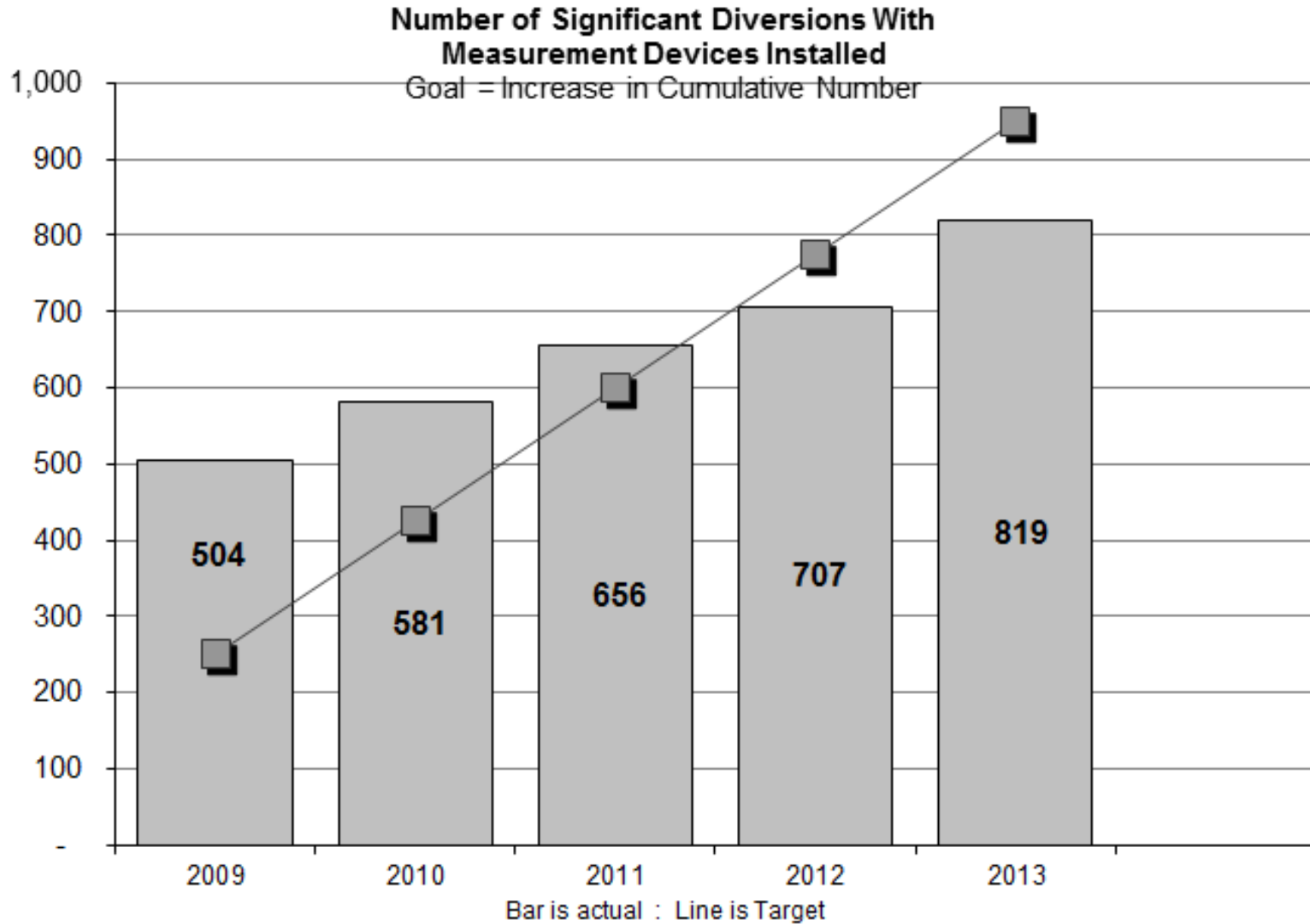
## EQUIP CITIZENS WITH INFORMATION

Number of Times Water Management-Related Data Were Accessed Through the Internet (in millions)



# Chapter 3: KPM 8

## IMPLEMENT 2000 WATER MEASUREMENT STRATEGY

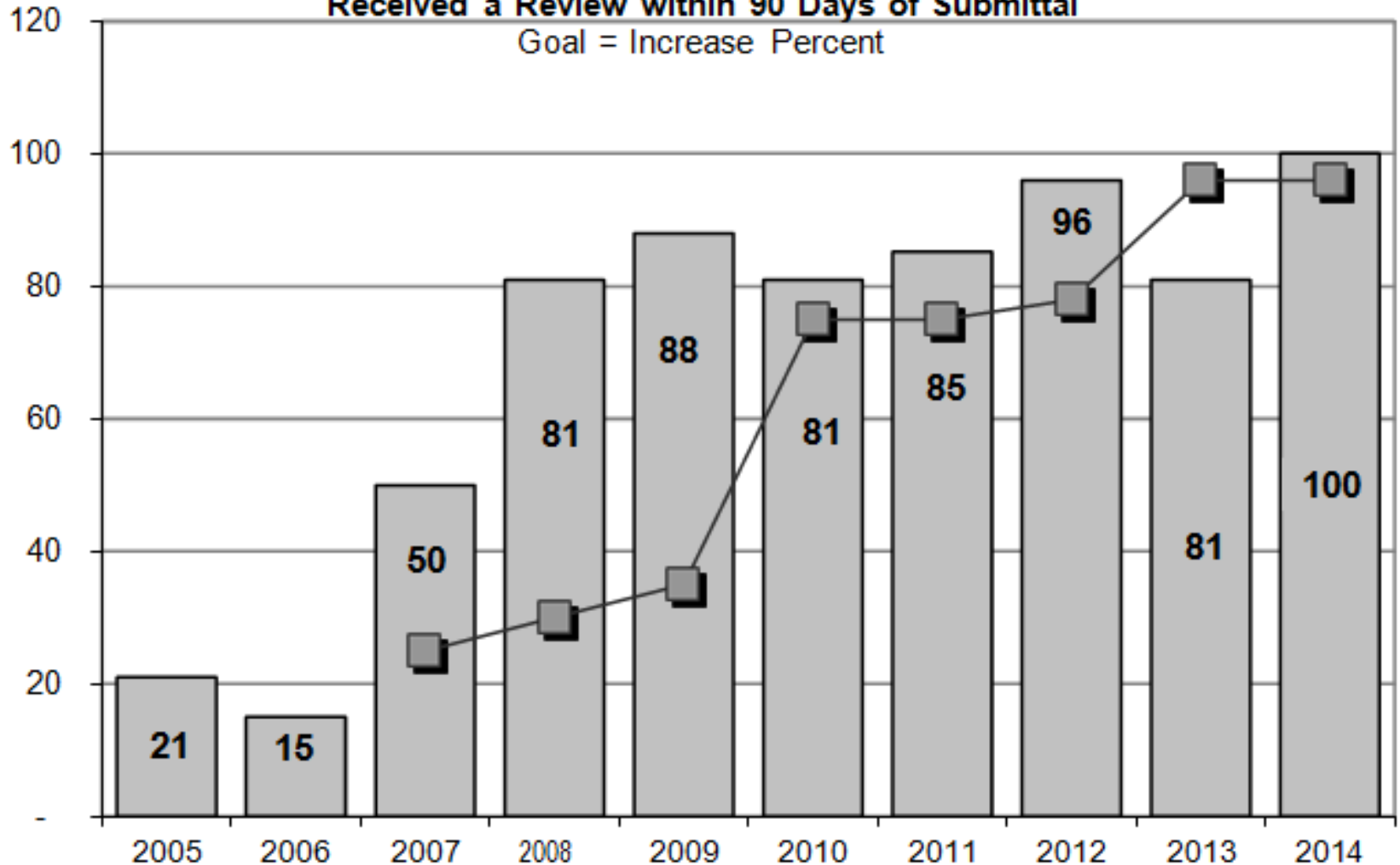


# Chapter 3: KPM 9

## EFFICIENCY IN WMCP REVIEWS

Percent of Water Management and Conservation Plans that Received a Review within 90 Days of Submittal

Goal = Increase Percent

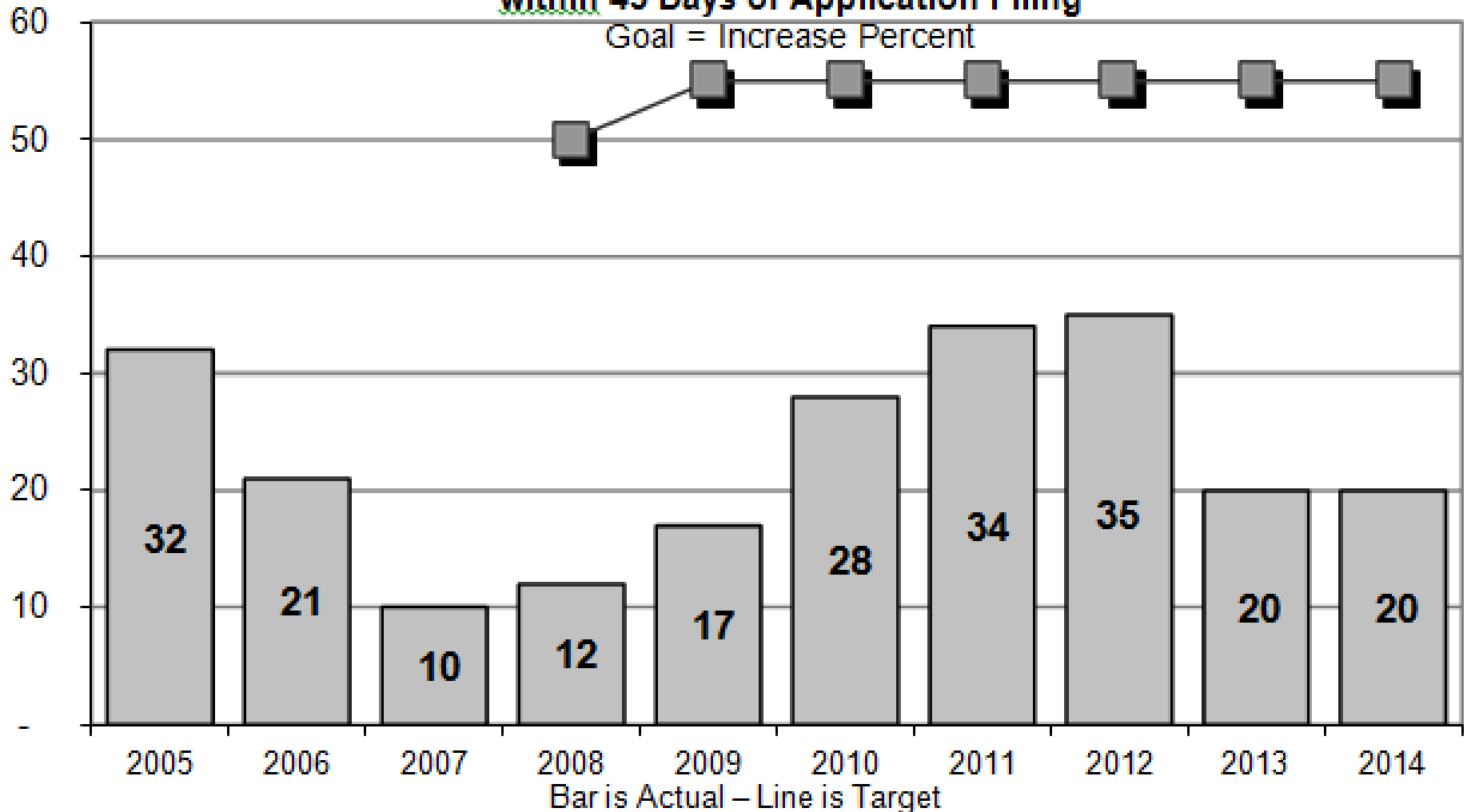


Bar is Actual – Line is Target

# Chapter 3: KPM 10

## EFFICIENCY IN WATER RIGHT APPLICATION PROCESSING

Percent of Water Right Applications that Received an Initial Review within 45 Days of Application Filing

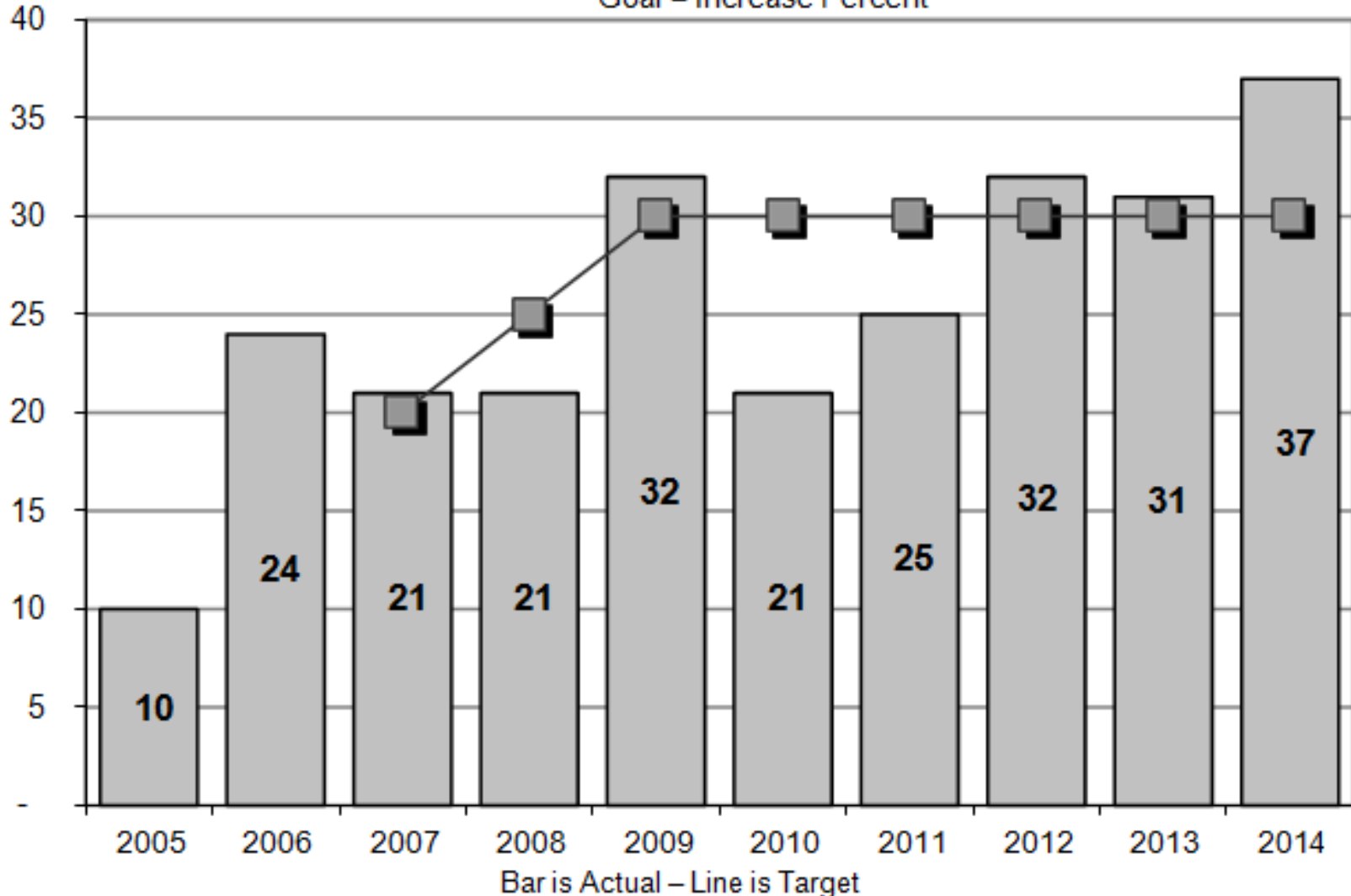




# Chapter 3: KPM 11

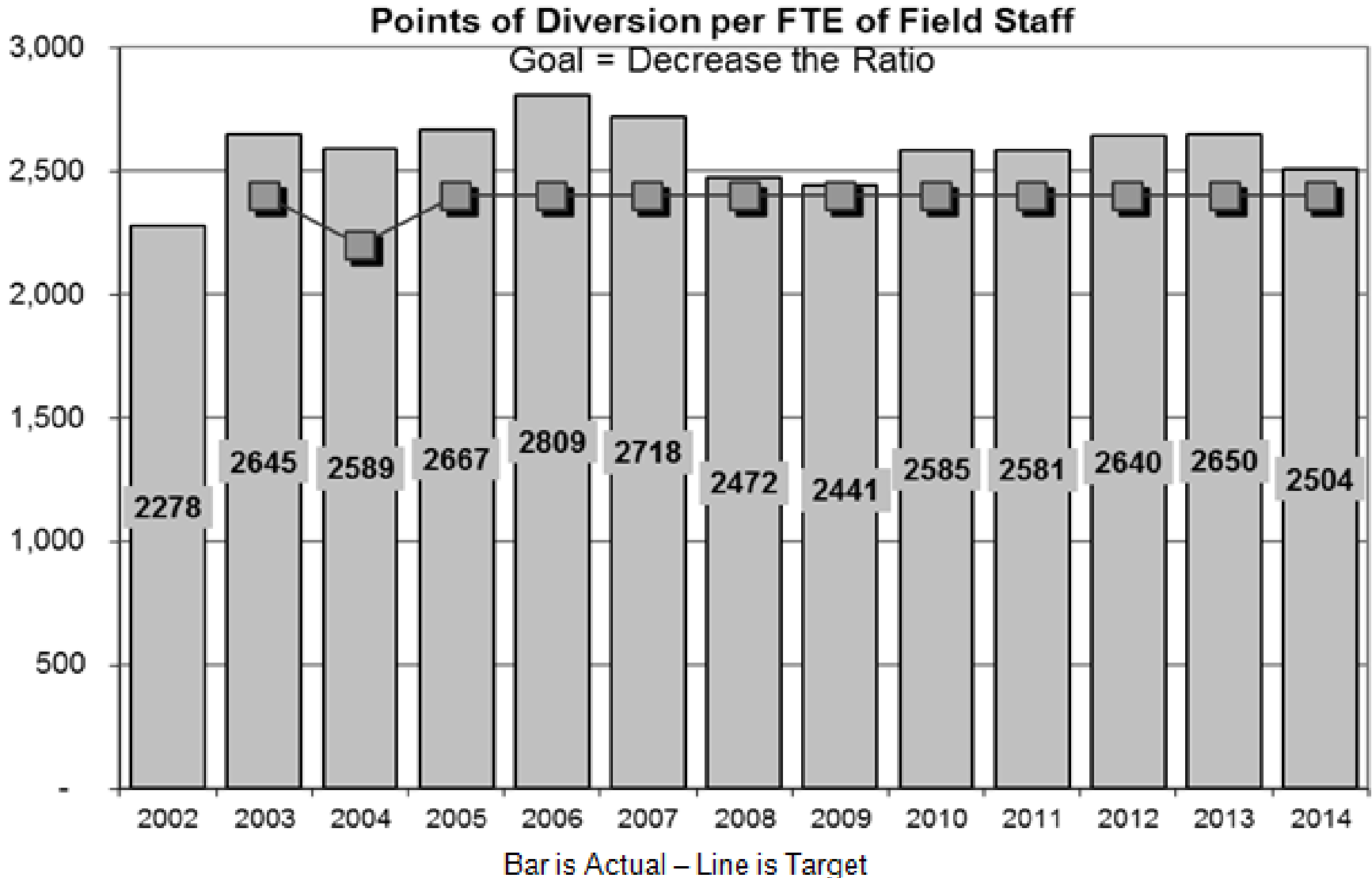
## EFFICIENCY IN TRANSFER APPLICATION PROCESSING

Percent of Transfer Final Orders Issued within 120 Days of Filing  
Goal = Increase Percent



# Chapter 3: KPM 12

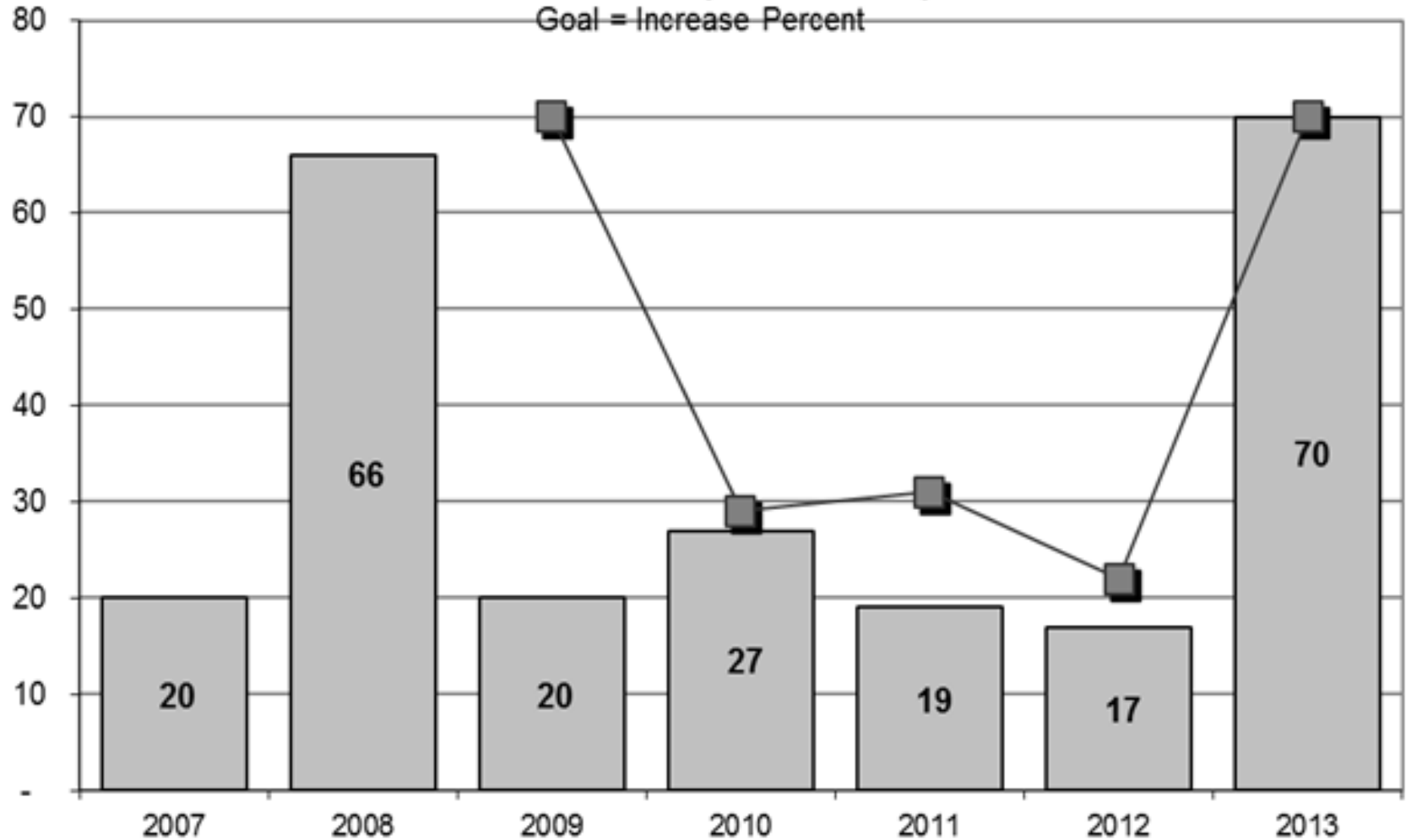
## EFFICIENCY IN FIELD REGULATORY ACTIVITIES



# Chapter 3: KPM 13

## WATER USE REPORTING

Percent of Water Users with an Annual Water-Use Reporting Requirement That Have Submitted Reports to the Department

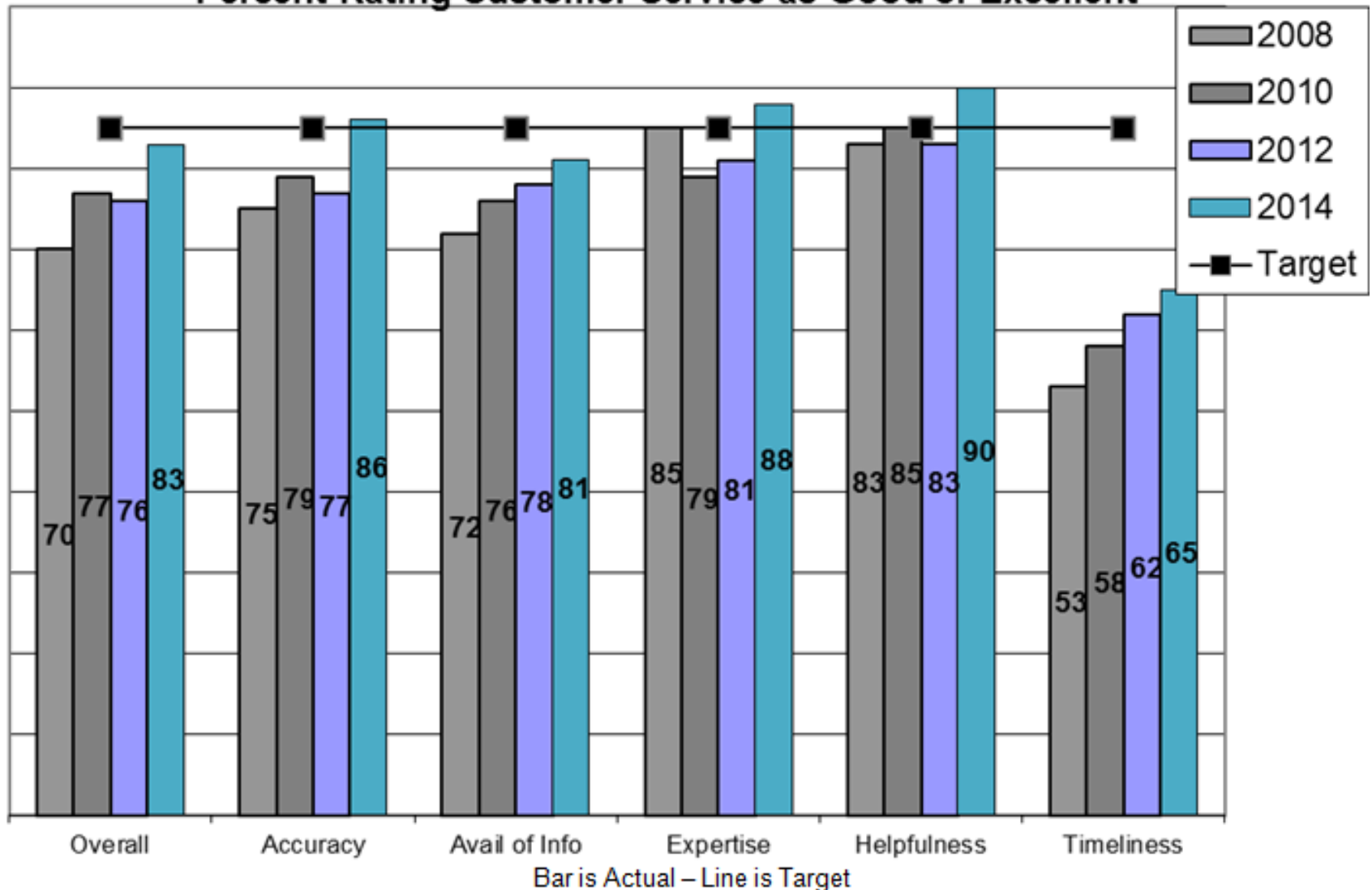


Bar is Actual – Line is Target

# Chapter 3: KPM 14

## CUSTOMER SERVICE SATISFACTION

Percent Rating Customer Service as Good or Excellent



# Chapter 4: Budget Drivers



# Chapter 4: Department Role

- Oregon's water quantity agency
- Founded in 1905
- 1909 Water Code
- No Federal counterpart



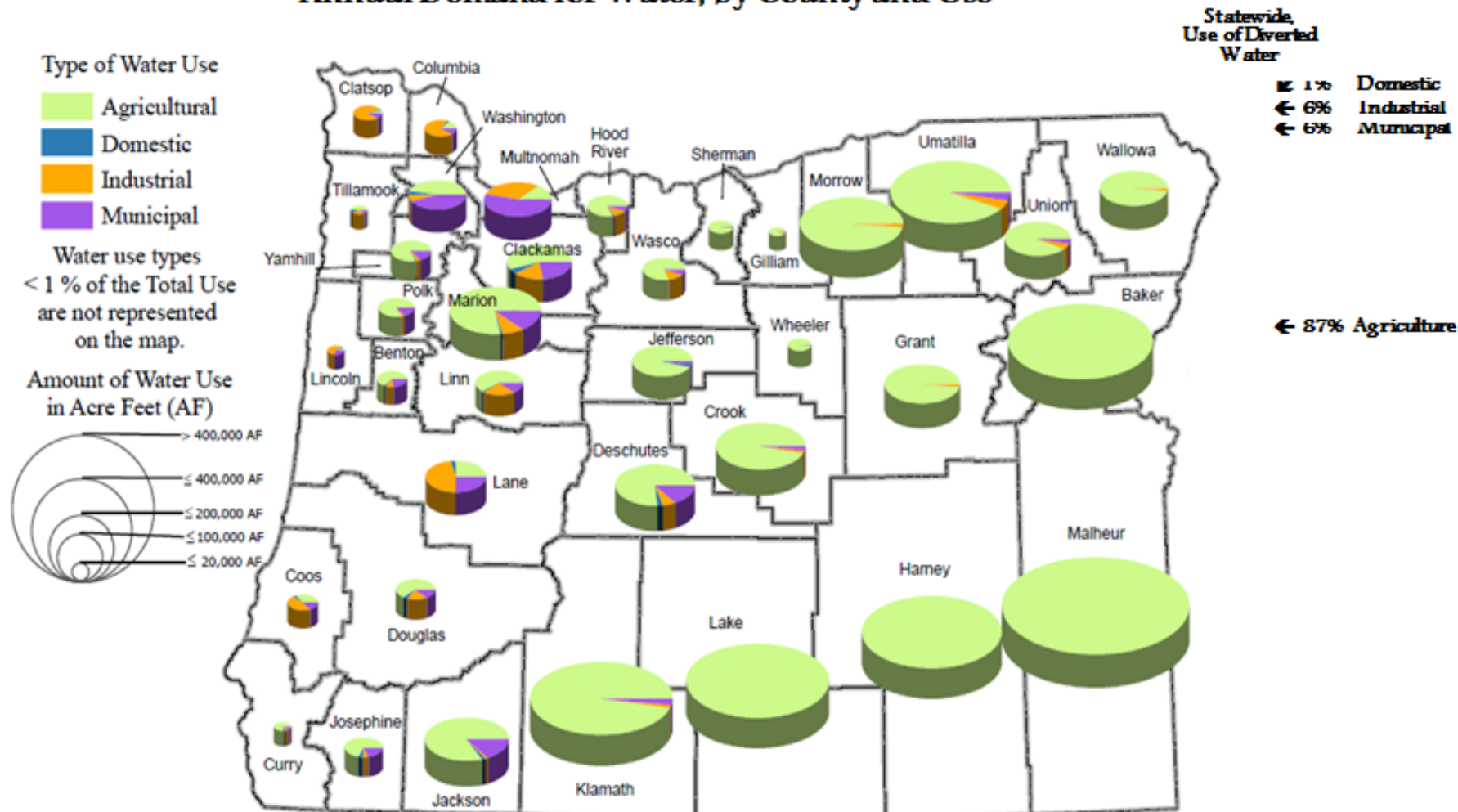
# Chapter 4: Integrated Water Resource Strategy

- **HB 3369 (2009)**
- **Adopted in 2012**
- **Recommended actions to:**
  - **Understand water resources today**
  - **Understand instream and out-of-stream needs**
  - **Understand the coming pressures that affect our needs and supplies**
  - **Meet Oregon's instream and out-of-stream needs**
- **Actively working on implementation**
- **Next update due in 2017**



# Chapter 4: Out-of-Stream Needs

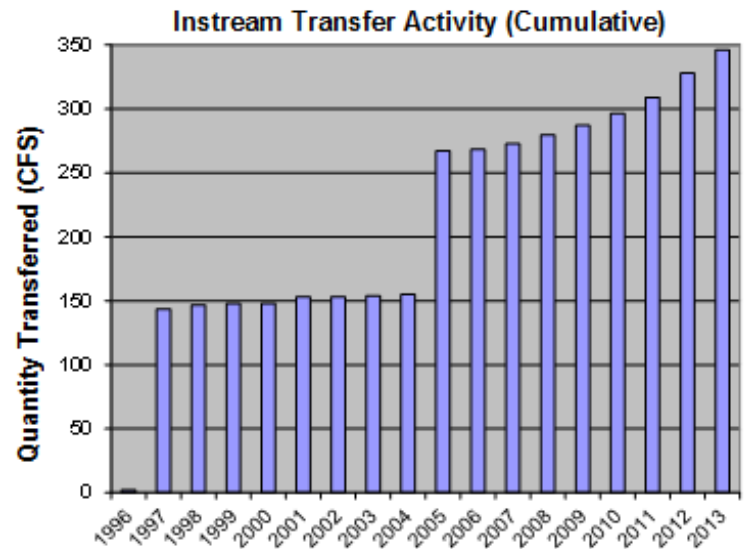
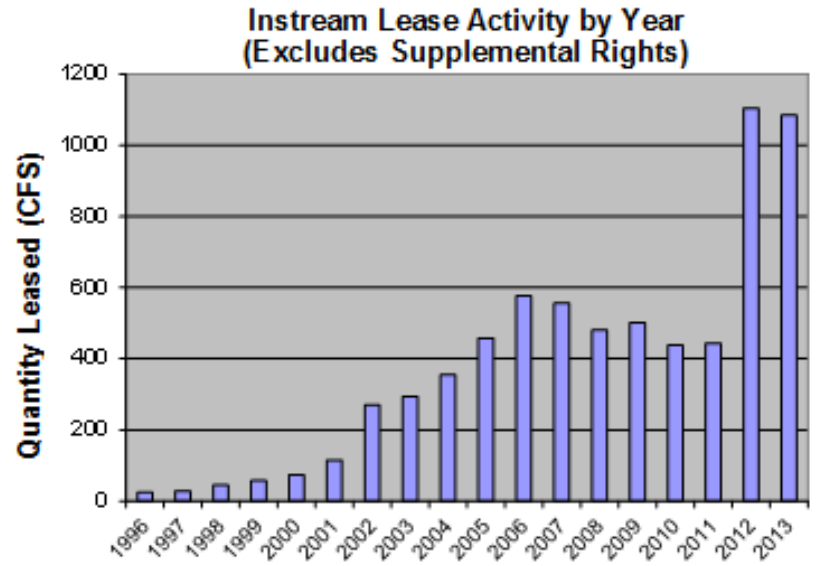
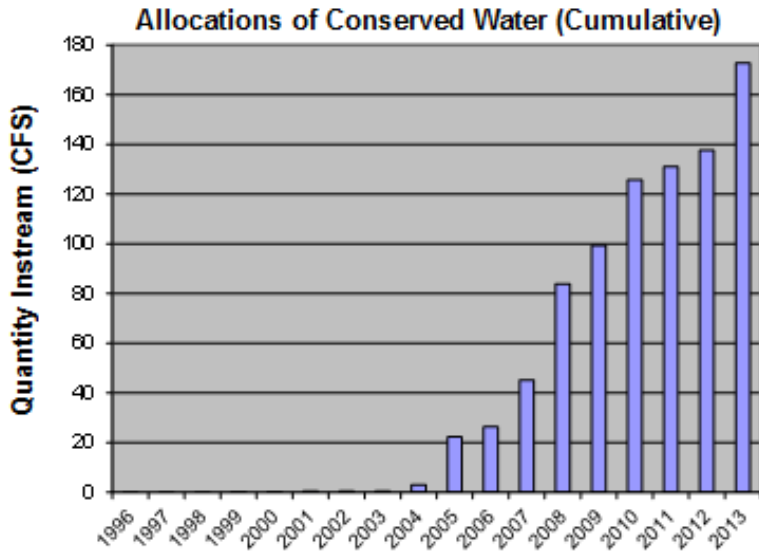
## Annual Demand for Water, by County and Use



Data Source: 2008 Statewide Water Needs Assessment, WRD



# Chapter 4: Instream Needs

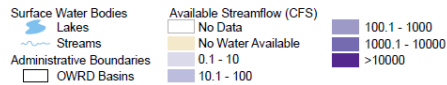


# Chapter 4: Available Surface Water

## Water availability for live flow allocation in August

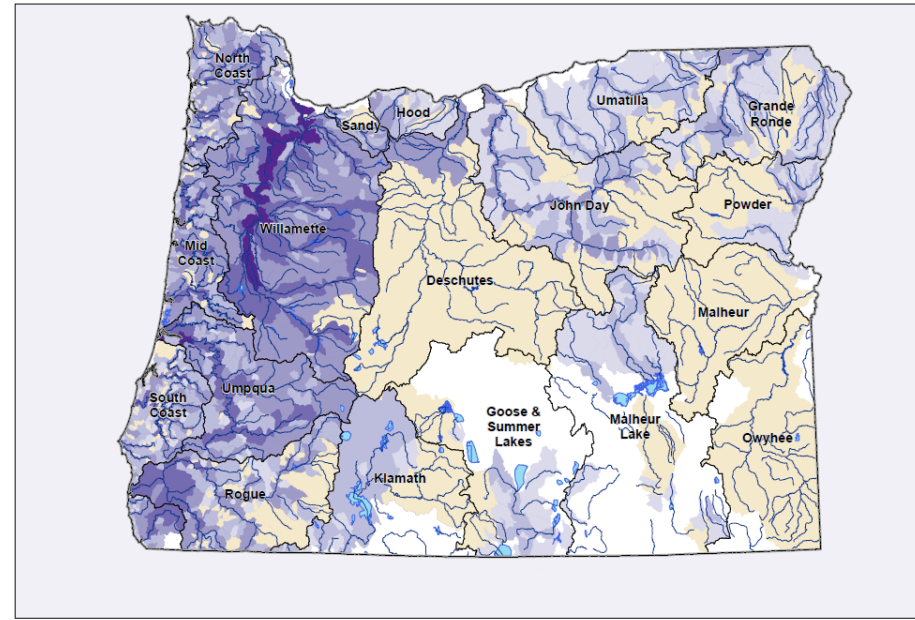


**August Available Streamflow  
Calculated at 80% Exceedance**

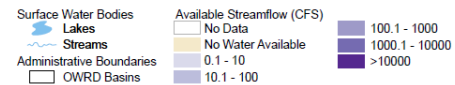


©2010 Oregon Department of Water, 10/2010. Project: Oregon Land Use Act. This product is for informational purposes and may not have been prepared for or be suitable for legal, engineering, or accounting purposes. Users of this information should review or consult the primary data and information sources to ascertain the usability of the information.

## Water availability for storage in January

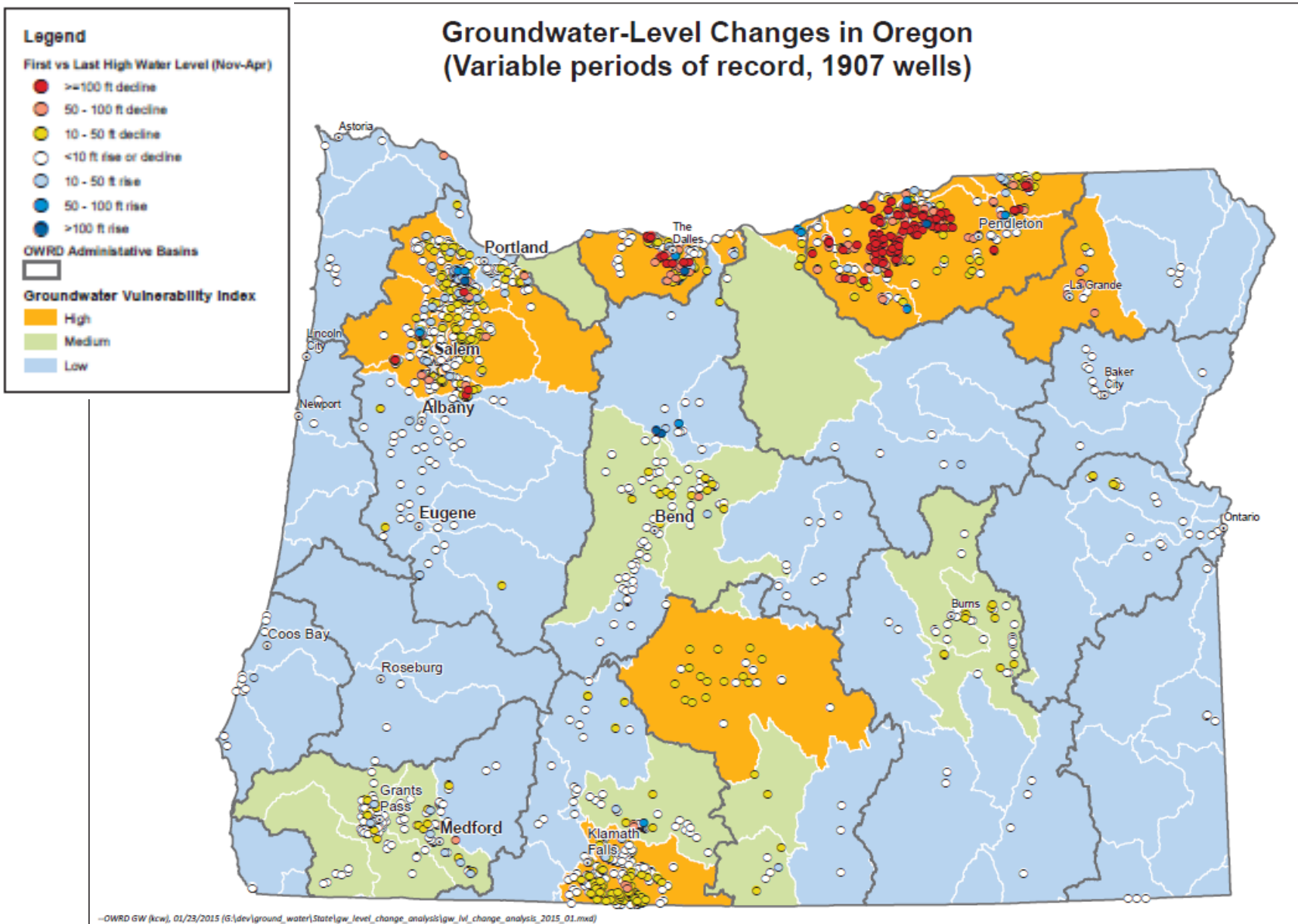


**January Available Streamflow  
Calculated at 50% Exceedance**

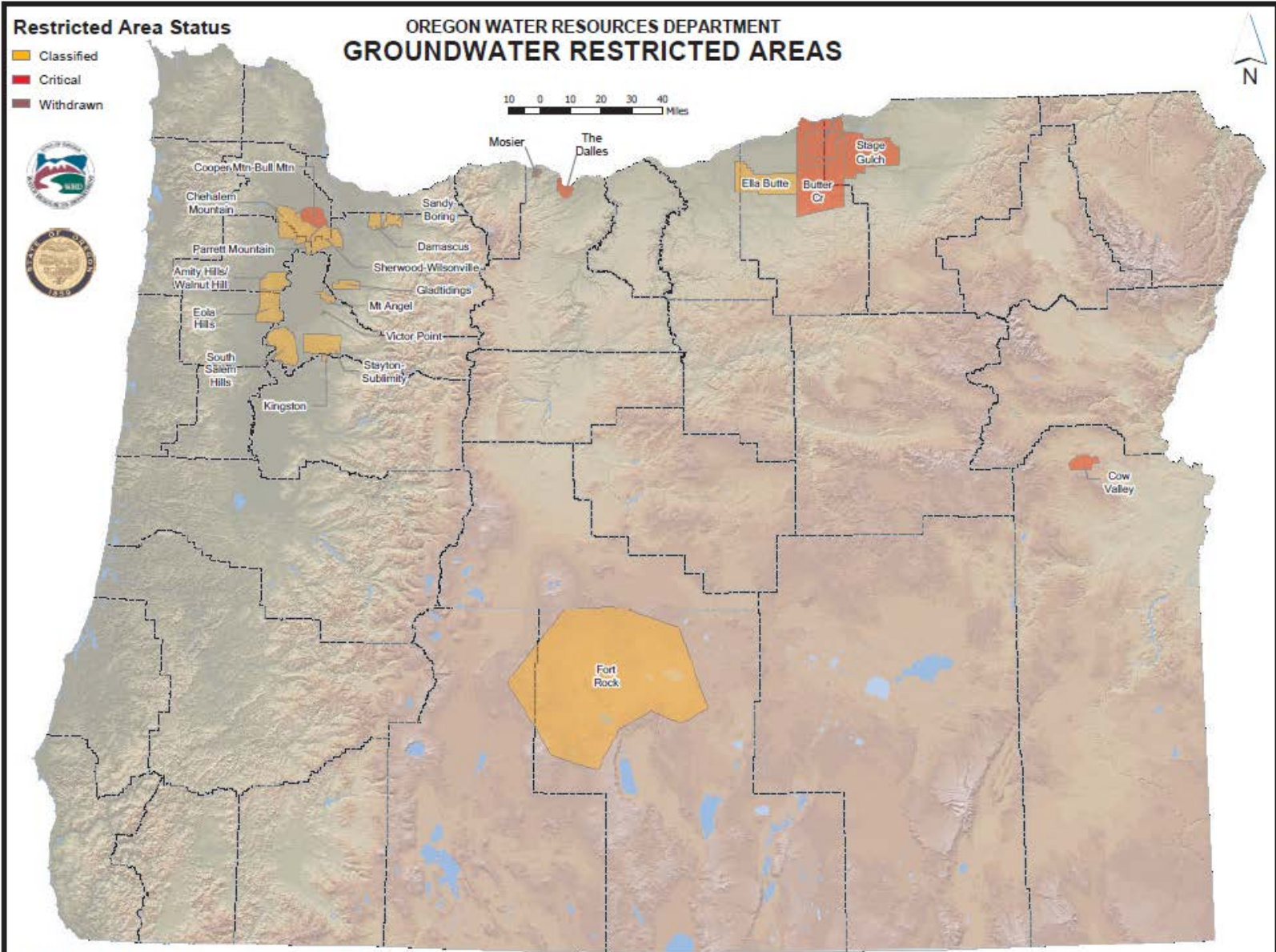


©2010 Oregon Department of Water, 10/2010. Project: Oregon Land Use Act. This product is for informational purposes and may not have been prepared for or be suitable for legal, engineering, or accounting purposes. Users of this information should review or consult the primary data and information sources to ascertain the usability of the information.

# Chapter 4: Status of Groundwater

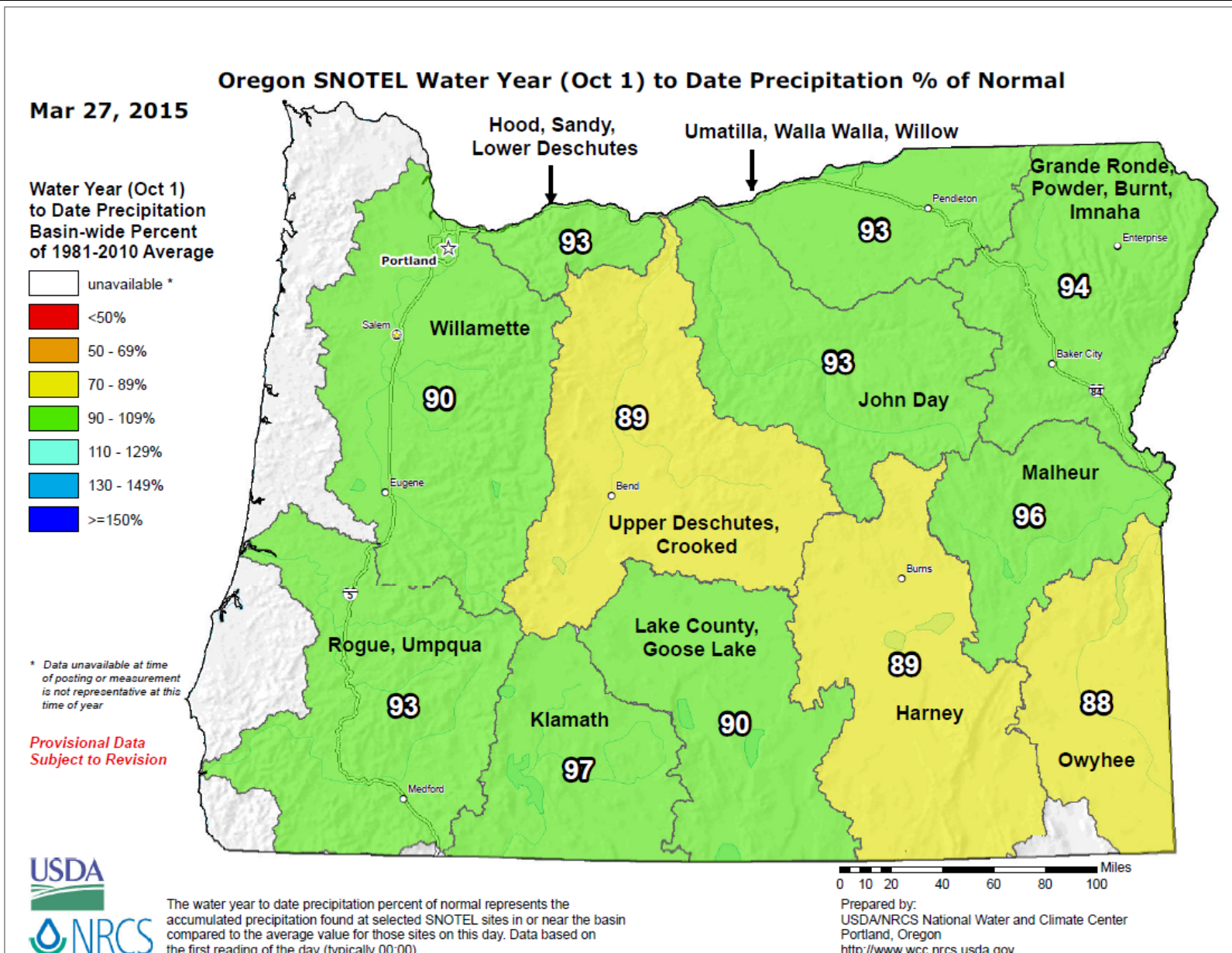


# Chapter 4: Status of Groundwater



--OWRD GW (kcv), 9/18/2014 (G:\dev\ground\_water\State\legislature\_2015\gw\_restricted\_areas.mxd)

# Chapter 4: Precipitation Conditions

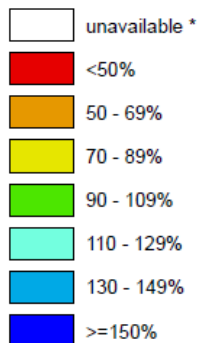


# Chapter 4: Snowpack Conditions

## Oregon SNOTEL Current Snow Water Equivalent (SWE) % of Normal

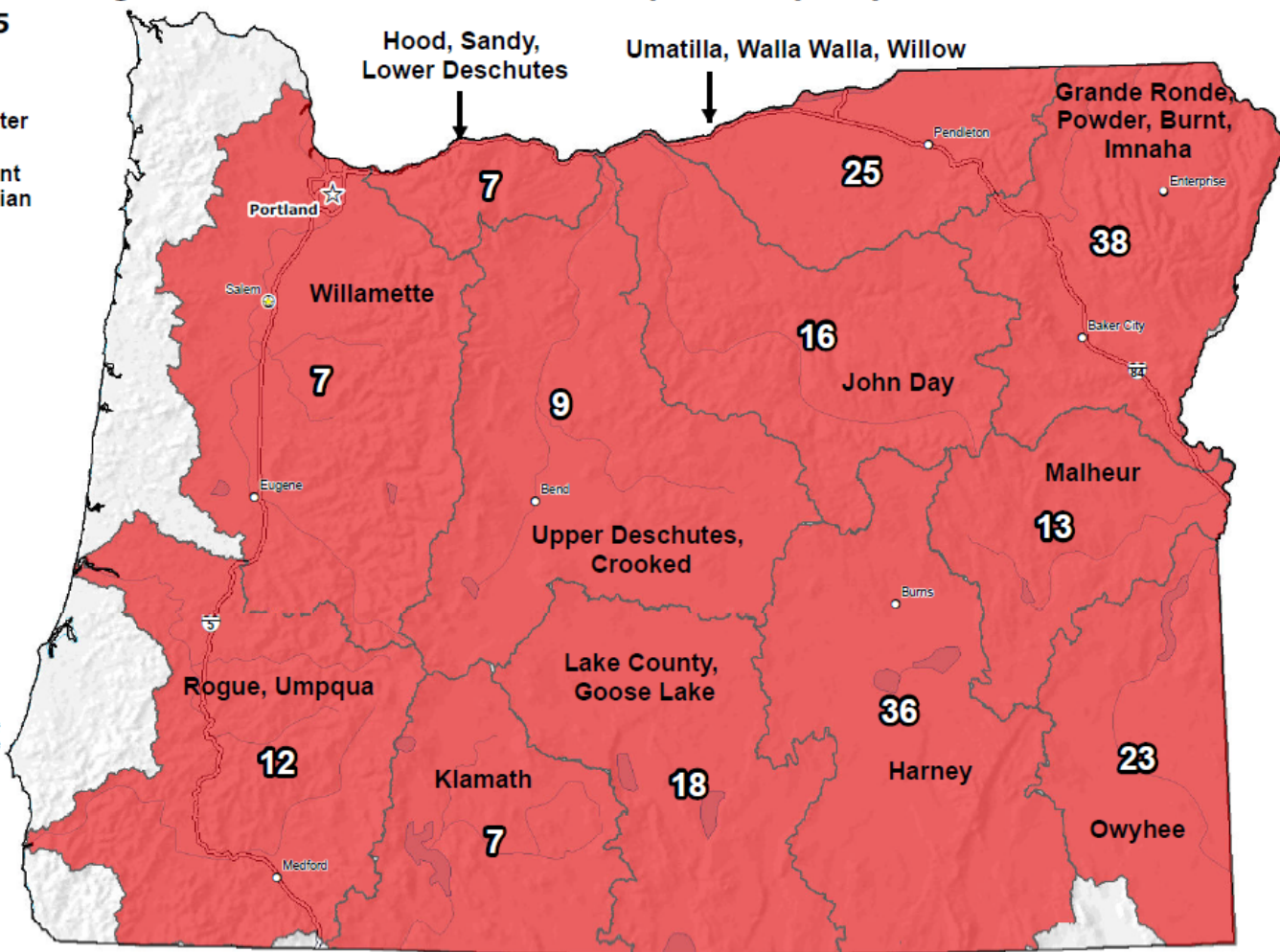
Mar 27, 2015

Current Snow Water Equivalent (SWE) Basin-wide Percent of 1981-2010 Median

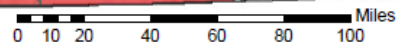


\* Data unavailable at time of posting or measurement is not representative at this time of year

Provisional Data  
Subject to Revision



The snow water equivalent percent of normal represents the current snow water equivalent found at selected SNOTEL sites in or near the basin compared to the average value for those sites on this day. Data based on the first reading of the day (typically 00:00).



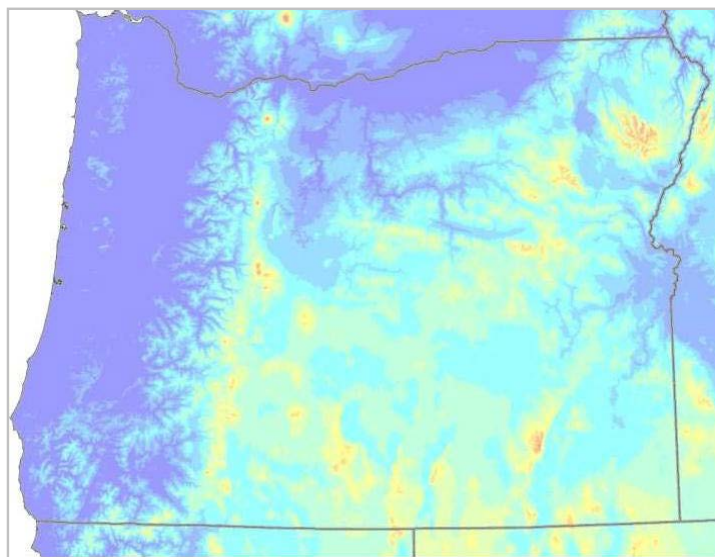
Prepared by:  
USDA/NRCS National Water and Climate Center  
Portland, Oregon  
<http://www.wcc.nrcs.usda.gov>

# Chapter 4: Declining Snowpack

Precipitation arriving as rain instead of snow:

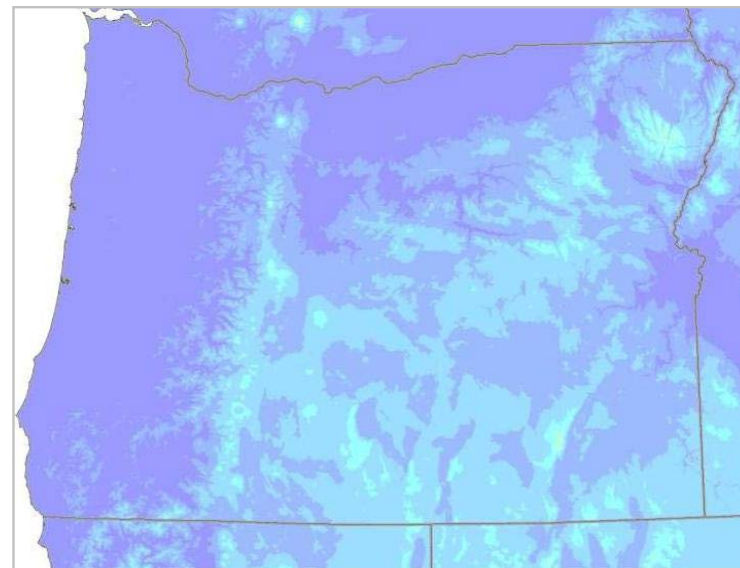
- flashier flood-prone systems
- decreased summertime run-off to surface water
- reduced recharge to groundwater aquifers

Current Precipitation Conditions

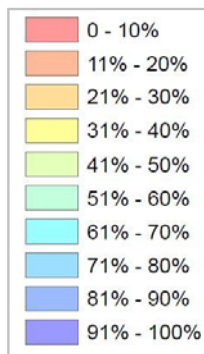


Red, yellow, and orange hues represent areas where a large percentage of precipitation falls as snow.

Future Scenario (3.0°C Temp Increase)



Snow-dominant areas largely disappear with a rise in air temperature.



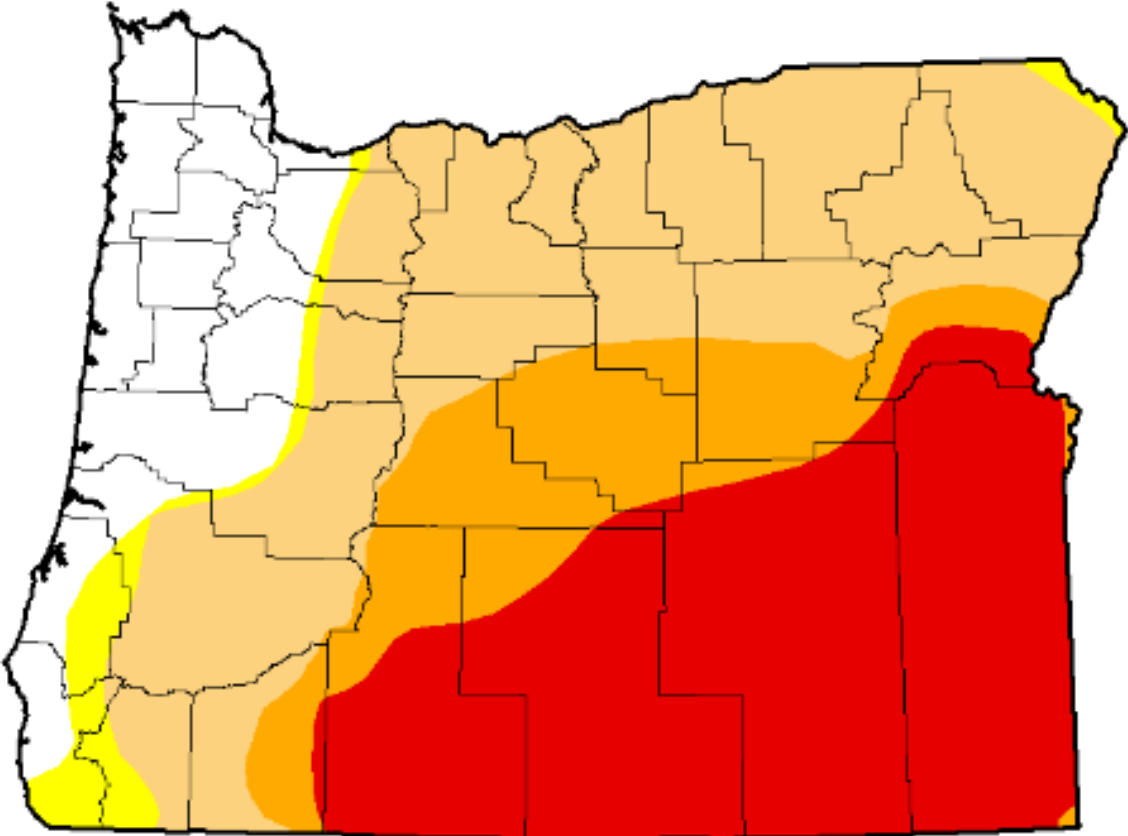
# Chapter 4: U.S. Drought Monitor

March 24, 2015

Intensity:

- D0 - Abnormally Dry
- D1 - Moderate Drought
- D2 - Severe Drought

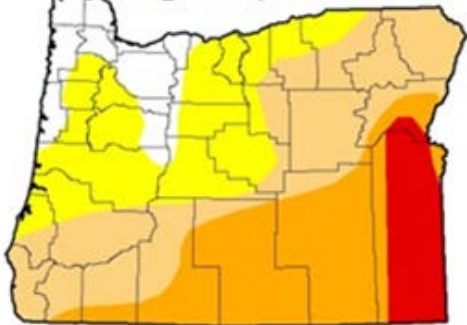
- D3 - Extreme Drought
- D4 - Exceptional Drought



August 5, 2014



August 6, 2013





# Chapter 4: Meeting Oregon's Water Needs

## Planning

SB 266 (2015)

Pending  
Legislation for  
Place-Based  
Planning Grants

## Evaluate Project Feasibility

SB 1069 (2008)

Water  
Conservation,  
Reuse and Storage  
Feasibility Study  
Grants

## Project Finance and Implementation

SB 839 (2013)

Loans and Grants  
to plan, evaluate  
and develop  
Water Supply  
Development  
Projects



# Chapter 4: Addressing Community Water Challenges

## The Umatilla Basin

- Groundwater declines
- CRUST and other ongoing efforts

## The Deschutes River Basin

- Groundwater Mitigation Program
- WaterSMART Basin Study

## The Klamath Basin

- Adjudication
- Settlement Agreements

## The Willamette Basin

- Reservoir Reallocation



# Chapter 4: Data

## THE FOUNDATION FOR WATER MANAGEMENT, ALLOCATION & SUPPLY

- Surface Water Data
- Groundwater Data



# Chapter 5: Governor's Recommended Budget

	<b>2011-13 Legislatively Adopted Budget</b>	<b>2013-15 Legislatively Adopted Budget</b>	<b>2015-17 Governor's Recommended Budget</b>
General Fund	\$ 20,614,684	\$ 26,504,946	\$ 30,908,571
Other Funds, including fees	10,403,841	10,626,121	\$ 11,300,665
Other Funds (grants and loans)	18,758,324	23,920,890	\$ 59,383,827
Lottery Fund (Debt Service)	706,751	574,025	\$ 6,620,003
Federal Funds	1,195,479	1,272,735	\$ 1,302,403
<b>Total Funds</b>	<b>\$ 51,679,079</b>	<b>\$ 62,898,717</b>	<b>\$ 109,515,469</b>
Full-Time Equivalent (FTE)	144.59	154.80	167.58

## Proposed Budget Investments:

- **Integrated Water Resources Development**
- **Strengthening Core Functions**
- **Helping Communities Solve Water Challenges**

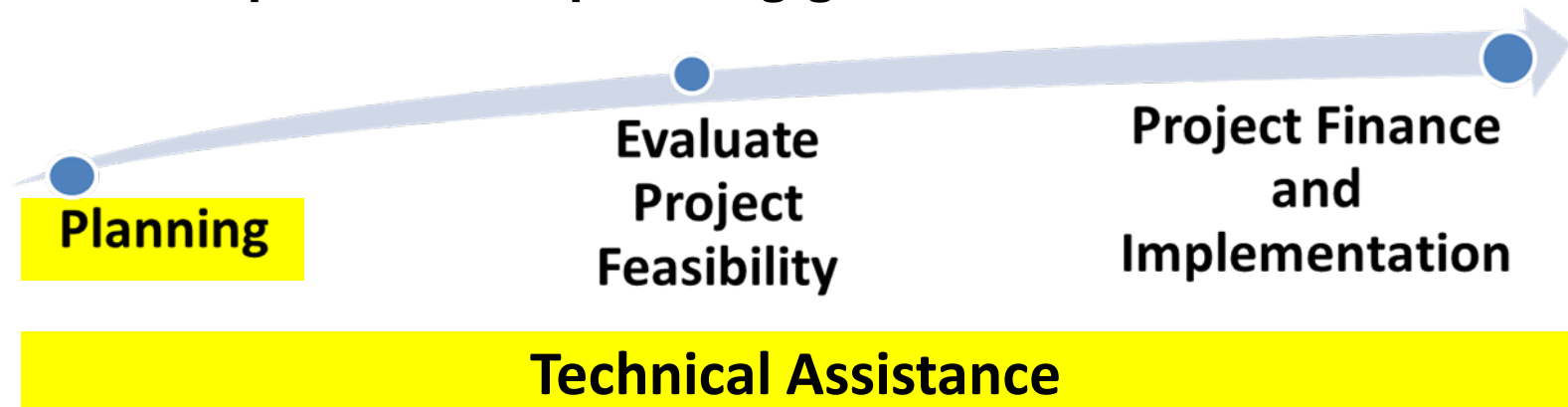
# Chapter 5: Integrated Water Resources Development

## Package #115

### Supporting Project Development & Place-Based Planning

6 FTE - \$1.2M GF; \$750K LB - \$56K for cost of issuance and debt service

- Allow state to work with communities to identify, evaluate, and develop water resources solutions to meet instream and out-of-stream needs
- Adds a water supply project manager, water supply engineer, finance analyst, water supply technical coordinator, and two place-based planning coordinators
- \$750,000 for place-based planning grants



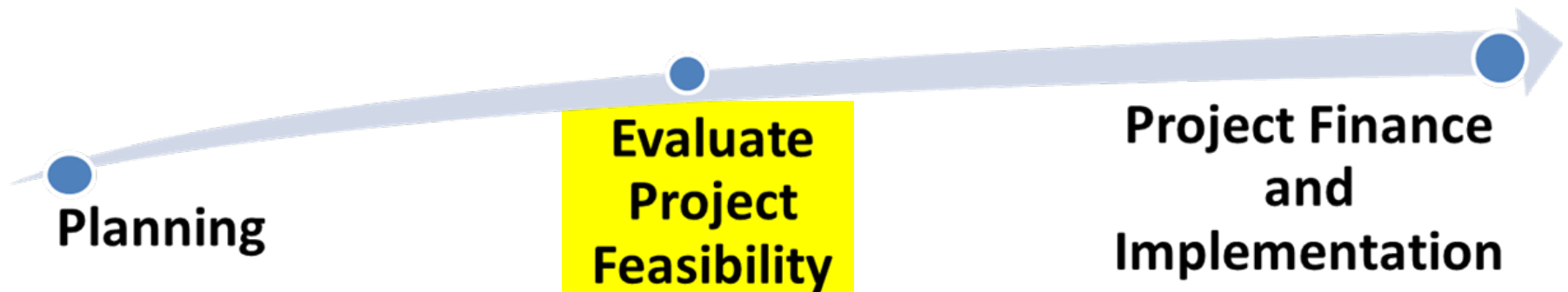
# Chapter 5: Integrated Water Resources Development

## Package #106

### Funding Feasibility Studies

**.75 FTE - \$140K GF; \$2M LB - \$150K for cost of issuance and debt service**

- **Adds an additional \$2 million for SB 1069 (2008) feasibility study grants to study the feasibility of developing water conservation, reuse, or storage projects**
- **Add staffing capacity (currently at .25 FTE) to administer and oversee the grant program**



# Chapter 5: Integrated Water Resources Development

## Package #113

### Funding Water Supply Projects

1 FTE - \$187K GF; \$17.25M LB - \$1.3M cost of issuance and debt service

- Supports water resources projects to meet current and future instream and out-of-stream water needs essential for economic growth, environmental health, and the welfare of all Oregonians
- Recapitalizes the Water Supply Development Account (SB 839 in 2013) and the Water Supply Fund with \$17.25 million for grants and loans for water projects
- Adds a position to administer and oversee grants and loans



# Chapter 5: Integrated Water Resources Development

## Package #120

### Facilitating Water Development Loans

**\$30M GO Bonds - \$1.7 M for cost of issuance and debt service**

- **Recapitalizes the Water Development Loan Fund using dedicated General Obligation Bonds for the purposes of financing water development projects**
- **Issuance of funds only after an agreement is signed for repayment by the borrower(s)**





# Chapter 5: Integrated Water Resources Development



## Planning

### Pkg. #115

- *\$750k for grants*
- *2 Place-based Planning Coordinators*

## Evaluate Project Feasibility

### Pkg. #106

- *\$2M for Feasibility Study Grants*
- *.75 FTE Grant Specialist*

## Project Finance and Implementation

### Pkg. #113

- *\$17.25M for Water Supply Development Loans and Grants*
- *Grant Specialist*

### Pkg. #120

- *\$30M for Water Development Loans*

## Technical Assistance

### (Pkg. #115)

- *Water Supply Project Manager*
- *Water Supply Engineer*
- *Finance Analyst*
- *Water Supply Technical Coordinator*

# **Chapter 5: Supporting Communities & Core Functions**

## **Package #101**

### **Klamath Coordination and Water Right Special Projects**

**2FTE – 427K GF**

- **A Klamath coordinator will focus on the day-to-day needs to implement the Klamath settlements**
- **Water right specialist**
  - **Process Klamath leases and transfers**
  - **Work on other key water right transactions needs, including backlogs related to extensions, claims of beneficial use, and certificate issuance**

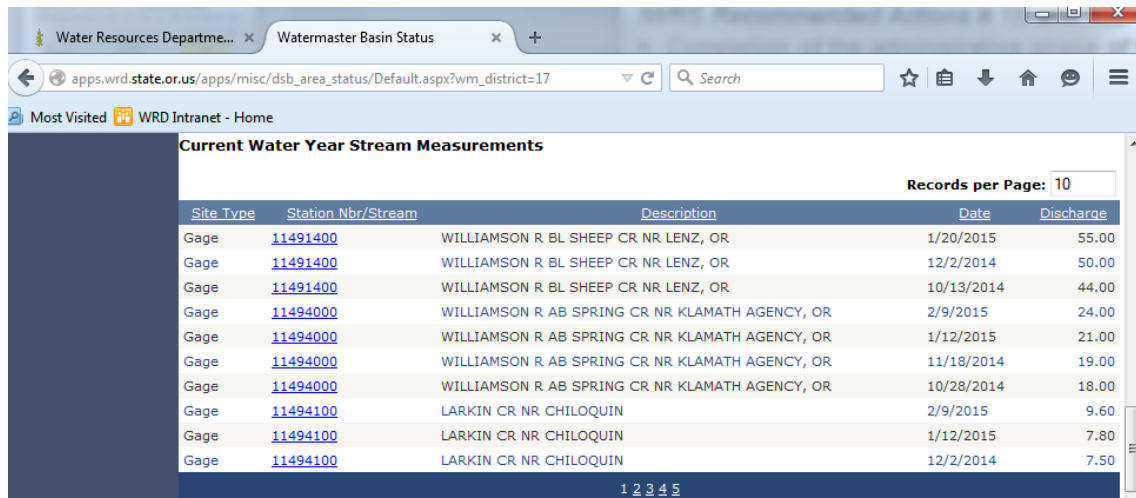
# Chapter 5: Supporting Communities & Core Functions

## Package # 104

### Data and Water Management in the Klamath Basin

1FTE - 182k GF

- Completion of the administrative phase of the Klamath adjudication and water settlements
- Significant increase in data collection and processing to provide timely information to manage substantial water supply challenges in the basin
- Adds one position for data collection and water management support



The screenshot shows a web browser window with the URL `apps.wrd.state.or.us/apps/misc/dsb_area_status/Default.aspx?wm_district=17`. The page title is "Watermaster Basin Status". The main content area displays "Current Water Year Stream Measurements" with a "Records per Page: 10" dropdown. The table below lists stream measurement data.

Site Type	Station Nbr/Stream	Description	Date	Discharge
Gage	<a href="#">11491400</a>	WILLIAMSON R BL SHEEP CR NR LENZ, OR	1/20/2015	55.00
Gage	<a href="#">11491400</a>	WILLIAMSON R BL SHEEP CR NR LENZ, OR	12/2/2014	50.00
Gage	<a href="#">11491400</a>	WILLIAMSON R BL SHEEP CR NR LENZ, OR	10/13/2014	44.00
Gage	<a href="#">11494000</a>	WILLIAMSON R AB SPRING CR NR KLAMATH AGENCY, OR	2/9/2015	24.00
Gage	<a href="#">11494000</a>	WILLIAMSON R AB SPRING CR NR KLAMATH AGENCY, OR	1/12/2015	21.00
Gage	<a href="#">11494000</a>	WILLIAMSON R AB SPRING CR NR KLAMATH AGENCY, OR	11/18/2014	19.00
Gage	<a href="#">11494000</a>	WILLIAMSON R AB SPRING CR NR KLAMATH AGENCY, OR	10/28/2014	18.00
Gage	<a href="#">11494100</a>	LARKIN CR NR CHILOQUIN	2/9/2015	9.60
Gage	<a href="#">11494100</a>	LARKIN CR NR CHILOQUIN	1/12/2015	7.80
Gage	<a href="#">11494100</a>	LARKIN CR NR CHILOQUIN	12/2/2014	7.50

# **Chapter 5: Supporting Communities & Core Functions**

## **Package # 105**

### **Establishing a Regional Solutions Community Liaison**

**1FTE - 207k GF**

- **Adds one position to increase Department capacity to participate in Regional Solutions' activities and support communities in resolving water-related issues**
- **This position will serve as a liaison to Regional Solutions teams, providing technical guidance, data, and permitting assistance**

# **Chapter 5: Supporting Communities & Core Functions**

## **Package #110**

### **Monitoring Coordination for Efficient Data Sharing and Management**

**1FTE - 211k GF**

- **Adds a monitoring coordinator to coordinate inter-agency water quantity and quality monitoring efforts, fill data gaps, and make improvements to how we gather, process and share data and information**
- **This position would assess water resource data needs and provide data quality assurance in working with local, state, federal, and tribal governments, as well as non-governmental entities and other partners**

A scenic view of a river with rapids, surrounded by lush green trees under a clear blue sky. The text "Thank You" is overlaid in the center.

**Thank You**