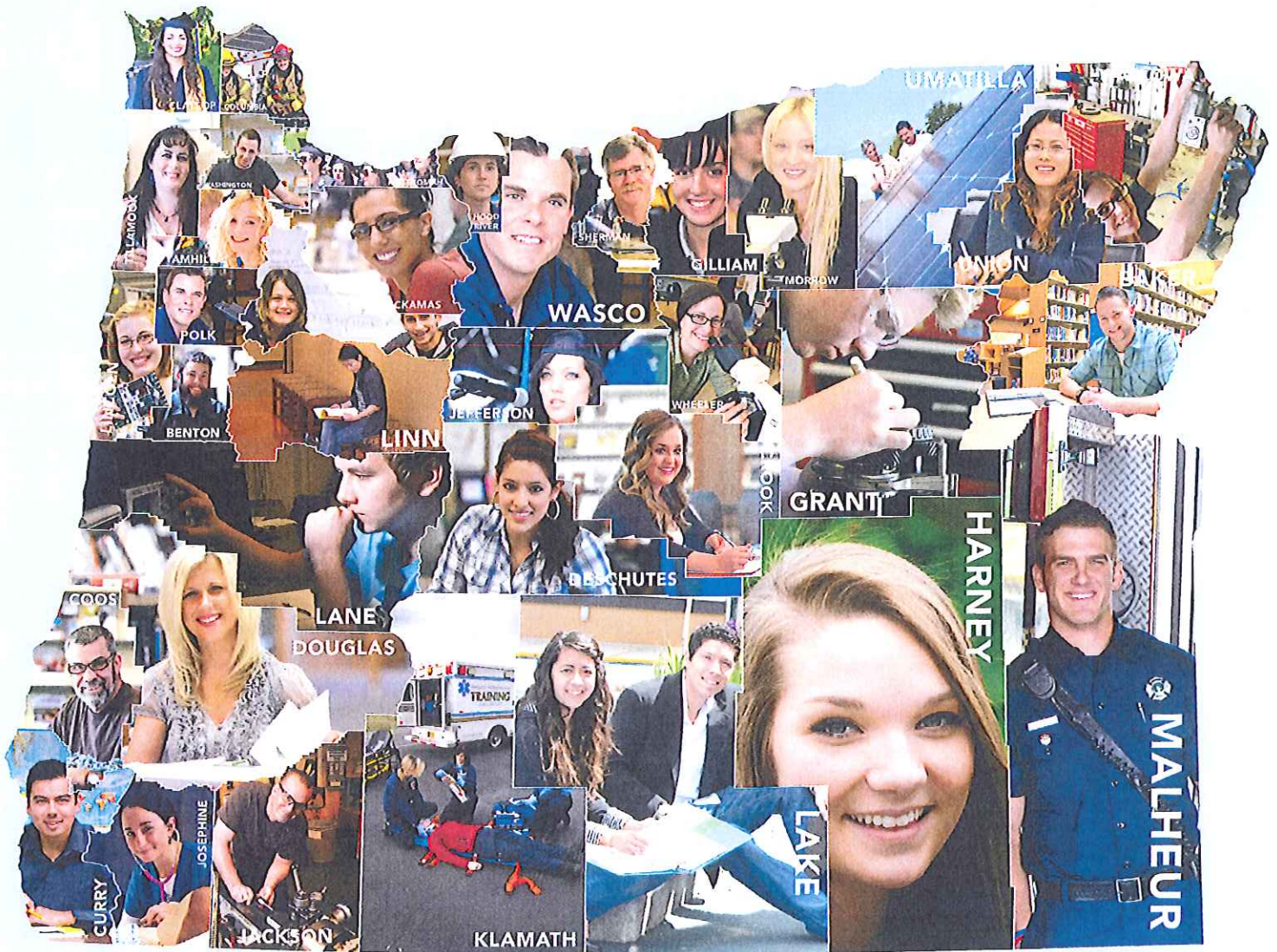


Oregon's best investment: COMMUNITY COLLEGES



Oregon's Best Investment: Community Colleges

We are:

- Creating new taxpayers.
- An engine for economic growth.
- Cultivating active citizens, increasing civic engagement, broadening perspectives, and fostering habits of adaptability, information literacy, and reasoned conclusions. This benefits not only the students themselves, but their neighborhoods, communities, and our state.
- Responding efficiently and effectively to employer's workforce needs.
- Creating a ladder to the middle class.
- A vital part of the state's education system and serve about 350,000 students a year, or about 1 in 11 Oregonians, from border-to-border.
- Supporting the priorities of the Oregon Business Plan Summit (January 6, 2015) to: connect education to work, improve the economy and opportunities in rural Oregon, improve earnings and help Oregonians out of poverty.



“Oregon currently ranks 47th in the nation for its funding of community colleges, which customize programs to meet workforce needs in their respective locations. These institutions offer lower tuition costs and have career-oriented programs that can get people into family-wage jobs within a relatively short period of time. Increasing outputs from community colleges, which educate nearly half of all undergraduates across the country, can only happen when they receive an equitable share of overall education funding.”

*“Invest more in colleges, schools”
The Dalles Chronicle – January 17, 2015*

Oregon's Best Investment: Community Colleges

Summary for All Community Colleges - 2013/14 Academic Year

A Pilot Test of Large-Scale Community College Training-Employment Matching

Specialty/Program	Number Employed	Main Industry of Employment	Average Hourly Wage	Reported Total Six Month Wage (actual) 7/1/14 to 12/31/14
Accounting Technology/Technician and Bookkeeping	10	Retail Trade	\$15.83	\$119,157.70
Airframe Mechanics and Aircraft Maintenance Technology/Technician	13	Manufacturing	\$20.17	\$223,378.54
Airline/Commercial/Professional Pilot and Flight Crew	15	Educational Services	\$18.99	\$141,730.07
Applied Horticulture/Horticulture Operations~ General	11	*	\$13.87	\$102,740.95
Autobody/Collision and Repair Technology/Technician	8	*	\$13.09	\$74,774.98
Automobile/Automotive Mechanics Technology/Technician	67	Retail Trade	\$15.45	\$760,095.20
Business Administration and Management~ General	8	*	\$14.48	\$106,855.70
Child Care Provider/Assistant	11	Health Care	\$11.25	\$72,911.13
Civil Engineering Technology/Technician	6	*	\$13.74	\$48,673.70
Computer and Information Systems Security	6	*	\$16.09	\$74,626.46
Computer Programming~ Specific Applications	106	Manufacturing	\$23.80	\$2,158,831.58
Computer Systems Networking and Telecommunications	3	*	\$10.59	\$12,954.89
Corrections	3	*	\$10.59	\$16,065.95
Criminal Justice/Police Science	3	*	\$12.36	\$23,654.47
Criminal Justice/Safety Studies	3	*	\$10.05	\$32,181.53
Culinary Arts/Chef Training	14	*	\$11.77	\$134,283.97
Data Entry/Microcomputer Applications~ General	4	*	\$14.48	\$35,590.84
Dental Assisting/Assistant	41	Health Care	\$15.00	\$451,198.24
Dental Hygiene/Hygienist	31	Health Care	\$28.65	\$327,140.41
Design and Visual Communications~ General	26	Retail Trade	\$15.10	\$271,928.13
Diesel Mechanics Technology/Technician	34	Wholesale Trade	\$14.42	\$484,345.22
Drafting~ General	8	Manufacturing	\$17.28	\$120,861.40
Electrical~ Electronic and Communications Engineering Technology/Technician	13	Administrative and Waste Services	\$16.44	\$185,172.35
Elementary Education and Teaching	8	Health Care	\$13.33	\$79,898.26
Emergency Medical Technology/Technician (EMT Paramedic)	33	Health Care	\$14.51	\$479,829.30
Fire Science/Fire-fighting	6	Public Administration	\$14.28	\$58,804.66
Industrial Mechanics and Maintenance Technology	4	Manufacturing	\$22.85	\$78,696.86
Juvenile Corrections	4	*	\$13.59	\$51,740.75
Legal Assistant/Paralegal	82	Professional and Technical Services	\$17.78	\$1,240,147.12
Licensed Practical/Vocational Nurse Training	68	Health Care	\$17.30	\$699,941.39

Oregon's Best Investment: Community Colleges

Summary for All Community Colleges - 2013/14 Academic Year

A Pilot Test of Large-Scale Community College Training-Employment Matching

Specialty/Program	Number Employed	Main Industry of Employment	Average Hourly Wage	Reported Total Six Month Wage (actual) 7/1/14 to 12/31/14
Machine Tool Technology/Machinist	24	Manufacturing	\$17.03	\$381,122.78
Management Information Systems~ General	8	*	\$17.98	\$117,355.99
Manufacturing Technology/Technician	41	Manufacturing	\$19.59	\$758,381.91
Marine Biology and Biological Oceanography	5	*	\$11.46	\$38,193.91
Medical/Clinical Assistant	30	Health Care	\$14.11	\$311,585.62
Nursing Assistant/Aide and Patient Care Assistant/Aide	7	Health Care	\$11.92	\$46,499.91
Physical Therapist Assistant	36	Health Care	\$22.88	\$494,568.63
Radiologic Technology/Science - Radiographer	23	Health Care	\$27.76	\$494,228.34
Registered Nursing/Registered Nurse	369	Health Care	\$30.24	\$7,208,885.22
Respiratory Care Therapy/Therapist	13	Health Care	\$22.98	\$154,333.59
System Administration/Administrator	27	Administrative and Waste Services	\$19.97	\$431,437.87
Veterinary/Animal Health Technology/Technician and Veterinary Assistant	20	Professional and Technical Services	\$13.72	\$239,415.45
Water Quality and Wastewater Treatment Management and Recycling Technology/Technician	13	Public Administration	\$19.74	\$217,890.40
Web Page~ Digital/Multimedia and Information Resources Design	57	Retail Trade	\$18.16	\$781,765.93
Welding Technology/Welder	64	Manufacturing	\$14.56	\$626,557.19
Word Processing	11	Educational Services	\$11.33	\$61,617.78
Total:	1,397		\$21.07	\$21,143,430.20

This pilot test was conducted by the Oregon Employment Department in collaboration with the Presidents of all Oregon community colleges and the Department of Community Colleges and Workforce Development. Each college selected five career-related programs. The Employment Department then determined whether completers of those programs found jobs in Oregon. For those who did, their industry of employment and wages were analyzed.

* Suppressed data, cells with two or fewer records are not published due to confidentiality restrictions.
Total wage data includes suppressed records.

Oregon's Best Investment: Community Colleges

Sample of Community College Specialty/Program Results

Blue Mountain Community College

Specialty/Program	Number Employed	Main Industry	Average Hourly Wage	Reported Total Six Month Wage (actual)
Registered Nursing	9	Health Care	\$25.63	\$172,140.94

Central Oregon Community College

Specialty/Program	Number Employed	Main Industry	Average Hourly Wage	Reported Total Six Month Wage (actual)
Airline/Commercial/ Professional Pilot & Flight Crew	15	Educational Services	\$18.99	\$141,730.07

Chemeketa Community College

Specialty/Program	Number Employed	Main Industry	Average Hourly Wage	Reported Total Six Month Wage (actual)
EMT/Paramedic	33	Health Care, Public Administration	\$14.51	\$479,829.30

Clackamas Community College

Specialty/Program	Number Employed	Main Industry	Average Hourly Wage	Reported Total Six Month Wage (actual)
Water Quality/Wastewater Treatment Management and Recycling Technology/Technician	13	Public Administration	\$19.74	\$217,890.40

Clatsop Community College

Specialty/Program	Number Employed	Main Industry	Average Hourly Wage	Reported Total Six Month Wage (actual)
Medical/Clinical Assistant	15	Health Care	\$13.89	\$153,975.73

Columbia Gorge Community College

Specialty/Program	Number Employed	Main Industry	Average Hourly Wage	Reported Total Six Month Wage (actual)
Licensed Practical/Vocational Nurse Training	11	Health Care, Public Administration	\$17.55	\$79,755.72

Klamath Community College

Specialty/Program	Number Employed	Main Industry	Average Hourly Wage	Reported Total Six Month Wage (actual)
Licensed Practical/Vocational Nurse Training	10	Health Care	\$20.94	\$203,324.84

Lane Community College

Specialty/Program	Number Employed	Main Industry	Average Hourly Wage	Reported Total Six Month Wage (actual)
Physical Therapy Assistant	20	Health Care	\$23.39	\$271,752.67

Linn-Benton Community College

Specialty/Program	Number Employed	Main Industry	Average Hourly Wage	Reported Total Six Month Wage (actual)
Radiologic Technology/Science-Radiographer	23	Health Care	\$27.76	\$494,228.34

Mt. Hood Community College

Specialty/Program	Number Employed	Main Industry	Average Hourly Wage	Reported Total Six Month Wage (actual)
Dental Hygiene/Hygienist	14	Health Care	\$31.17	\$171,833.90

Oregon Coast Community College

Specialty/Program	Number Employed	Main Industry	Average Hourly Wage	Reported Total Six Month Wage (actual)
Registered Nursing/Registered Nurse	16	Health Care	\$33.55	\$308,270.91

Portland Community College

Specialty/Program	Number Employed	Main Industry	Average Hourly Wage	Reported Total Six Month Wage (actual)
Computer Programming-Specific Applications	106	Manufacturing, Retail Trade, Health Care, Information	\$23.80	\$2,158,831.58

Rogue Community College

Specialty/Program	Number Employed	Main Industry	Average Hourly Wage	Reported Total Six Month Wage (actual)
Manufacturing Technology/Technician	21	Manufacturing, Construction, Educational Services	\$22.37	\$438,804.71

Southwestern Oregon Community College

Specialty/Program	Number Employed	Main Industry	Average Hourly Wage	Reported Total Six Month Wage (actual)
Registered Nursing/Registered Nurse	26	Health Care	\$33.07	\$549,701.70

Treasure Valley Community College

Specialty/Program	Number Employed	Main Industry	Average Hourly Wage	Reported Total Six Month Wage (actual)
Elementary Education/Teaching	8	Health Care	\$13.33	\$79, 898.26

Umpqua Community College

Specialty/Program	Number Employed	Main Industry	Average Hourly Wage	Reported Total Six Month Wage (actual)
Registered Nursing/Registered Nurse	50	Health Care	\$30.30	\$1,114,179.80

For More Information Contact:

*Dr. Peter Angstadt, President
Rogue Community College
3345 Redwood Highway
Grants Pass, OR 97527
(541) 956-7000
pangstadt@rogucecc.edu*