

Background

2010 USFWS Decision: “Warranted but Precluded”

Oregon Threats

- Wildfire
- Invasive Weeds and Juniper
- Habitat Fragmentation

2011 Oregon Fish & Wildlife Commission: Sage Grouse Conservation Strategy - Core Areas

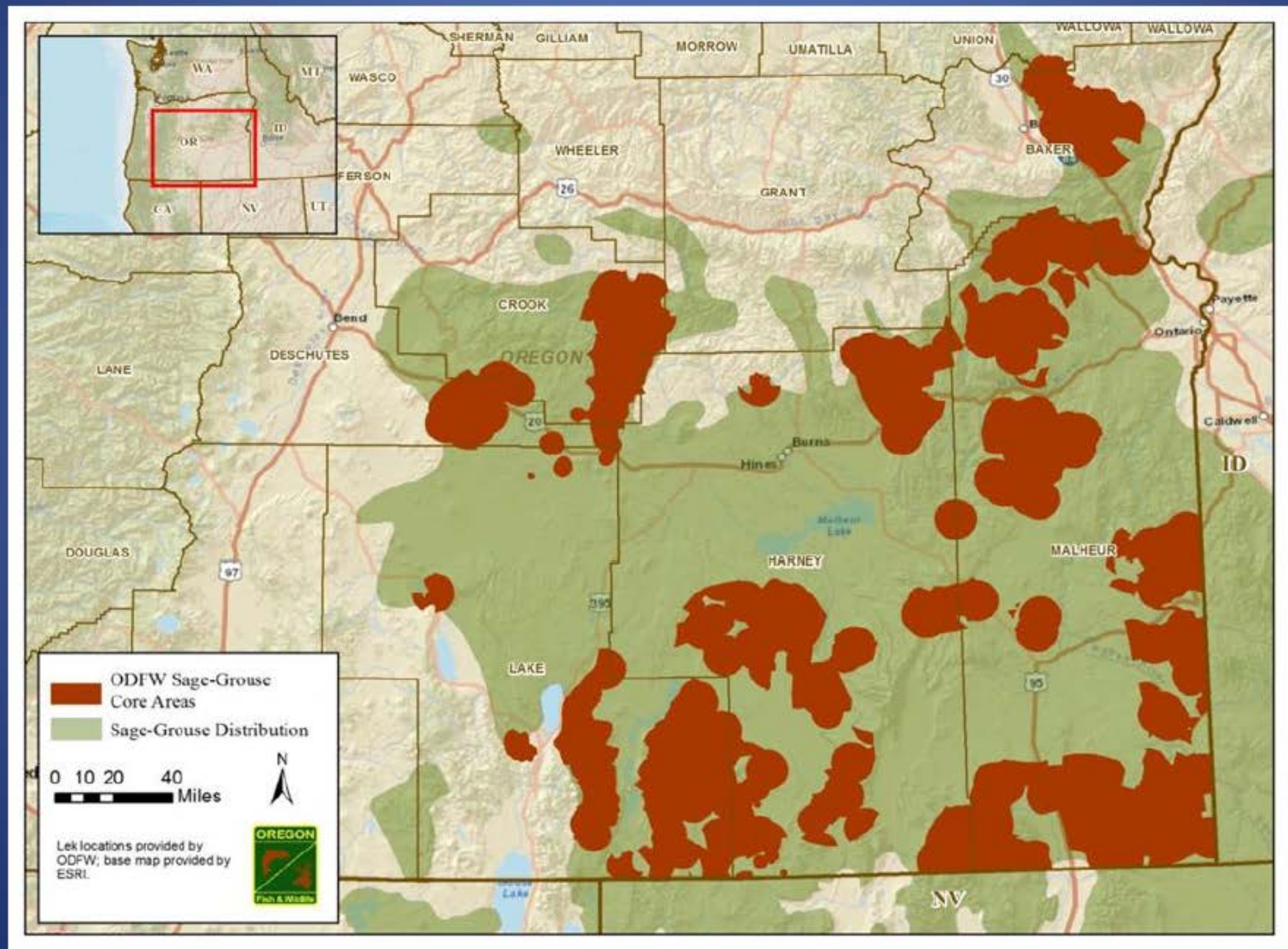
- 90% of breeding population
- 37% of the habitat

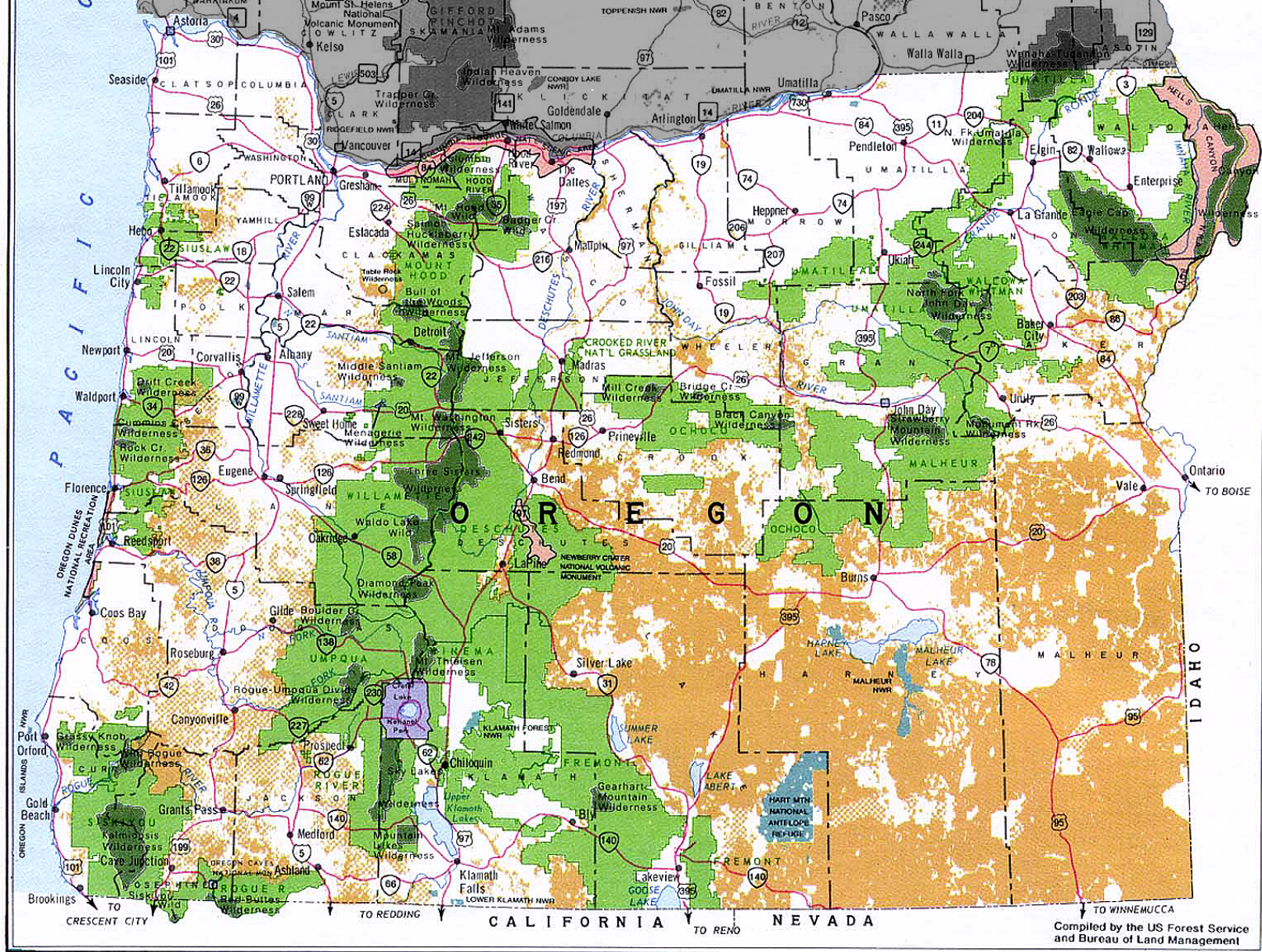
Oregon's Sage Grouse Action Plan

- Ranching/CCAs and CCAAs
- Wildfire
 - Capacity Building for Rangeland Fire Protection Associations
 - Pre and Post-Fire Actions
- Invasive Weeds and Juniper
 - SGI, RCPP and OWEB
- Habitat Fragmentation
 - Existing Land Use Program
 - LCDC and OFWC Rulemakings

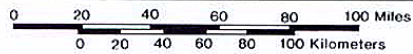


Sage-Grouse Core Areas





Compiled by the US Forest Service and Bureau of Land Management



PUBLIC LANDS IN OREGON

- NATIONAL FOREST
- NATIONAL FOREST WILDERNESS
- NATIONAL RECREATION AREA, SCENIC AREA OR VOLCANIC MONUMENT

- BUREAU OF LAND MANAGEMENT ADMINISTERED LANDS
- US FISH AND WILDLIFE SERVICE
- NATIONAL PARK

Source	Name	Brief Description	Amount
Governor's Budget (2015-17 biennium)	Wildfire Package (ODF POP 120)	support for Rural Fire Protection Associations and additional efforts to manage wildfire and protect priority sage grouse habitat	\$1,659,130
	Invasive Annual Grass and Juniper Package (ODA POP 390):	incentive payments to landowners for inventory, treatment, and restoration efforts.	\$500,000
	Pre- and Post-Fire Habitat Resilience (ODFW POP 132)	funding to implement actions that restore habitat quality and resilience to fire as well as promote recovery of native habitat post-fire.	\$1,350,000
	Mitigation Implementation (ODFW POP 130).	Coordination of All-Lands Mitigation Approach	\$350,000
	Sage Grouse Initiative (ODFW POP 105)	partnership positions working w/ landowners to address threats to sage grouse habitat while improving sustainability of working ranches.	\$90,000
	Statewide Coordinator + Grants (DLCD 108)	Coordination of All-Lands approach to disturbance; local grants for implementation of county sage grouse programs.	\$438,000
	Oregon Invasive Species Council (ODA POP 320)	Improves Oregon's overall response to invasive species, including in sage grouse habitats.	\$100,000
HB 3401	Wild Bird Conservation Act	New funding source from tax on bird seed for wild bird conservation actions, includes 50% dedicated to priority sage grouse habitats.	
*Legislation (other)	**	**	**
Oregon Watershed Enhancement Board	Focused Investment Partnership	Funding from state lottery dollars dedicated to focal habitats including sage-steppe; advances conifer removal and other prioritized actions to advance sage grouse conservation.	