

**Testimony by Wilsonville Mayor Tim Knapp
in Support of HB 2589:**



**Powerful Class of Neonicotinoid Pesticides Shown to
Harm Pollinators, Difficult for Professionals to Apply**

For Public Hearing Scheduled on March 26, 2015, Before the
House Committee On Agriculture and Natural Resources

To Chair Witt, Vice-Chairs Krieger and McLain, and Members of the Committee:

The City of Wilsonville supports the concepts of HB 2589 to protect pollinators from harmful chemicals containing nitro-group neonicotinoids.

The City of Wilsonville was the site in June 2013 of reportedly the largest pollinator bumble bee-kill in the history of the United States, a distinction that our community does not relish — all due to the application of neonicotinoid pesticides. This powerful class of pesticides has been shown conclusively to harm pollinators throughout the life-cycle of the product, with detrimental effects continuing long after initial treatment since plants take-up the pesticide into their tissues.

The environmental impact of neonicotinoids has come under increasing scrutiny worldwide. In April 2014, the European Union banned the use of three types of neonicotinoid pesticides in crops that attract bees.

Many local area farming and nursery businesses are dependent upon pollinator health for propagation of key nut, fruit and vegetable crops. Pacific Natural Foods, a major national organic food-processor with substantial employment and operations in Tualatin and Wilsonville, is dependent on healthy populations of pollinators for successfully farming over 1,000 acres in the Willamette Valley.

The City supported the Oregon Department of Agriculture's adoption in February 2015 of OAR 603-057-0388 that "Prohibits the application of four neonicotinoid insecticides, regardless of application method, on linden trees." The Department found that four separate bumble bee-kill incidents related to applications of dinotefuran or imidacloprid in 2013 and three separate bee-kill incidents in 2014.

The City notes that each of these pollinator-killing incidents was brought about by the use of neonicotinoid insecticides by duly licensed pesticide applicators — technicians trained in correct pesticide application. One might observe that, "If the experts can't get it right, what would make us think that homeowners and others can do a better job?"

The Department reports that pesticide applicators began using the insecticides thiamethoxam or clothianidin as replacements for dinotefuran or imidacloprid. The Department found that thiamethoxam and clothianidin are closely related to dinotefuran and imidacloprid (all are nitroguanidine neonicotinoid insecticides), and can be equally or possibly more hazardous to bumble bees. Thus, after evaluating the toxicity and half-lives of thiamethoxam and clothianidin and investigating potential alternatives; and discussing the findings with industry, the Department concluded that a change in the rule is appropriate to safeguard pollinator health, which is crucial for the success of Oregon's long-term agricultural operations.

The City agrees also with the recommendations of the "Report to the Oregon Legislative Assembly" by the Task Force on Pollinator Health released in November 2014:

1. Oregon should develop a strong, effective outreach and education strategy on pollinator health, including best management practices. (HB 3362)
2. Oregon should fully fund a state-of-the-art bee health diagnostic facility at Oregon State University. (HB 3360)
3. An integrated pollinator health research plan should be developed and funded to improve understanding of the many issues affecting pollinator health. (HB 3361)
4. A sustainable revenue stream to fund the proposed outreach, education and research programs is needed.

Enactment of HB 2589 is compatible with the recommendations of the Task Force and provides the Department with flexibility to determine "exemptions" from the prohibition of neonicotinoids to accommodate unanticipated situations.

The City of Wilsonville respectfully urges a "Do Pass" vote on HB 2589 by the House Committee On Agriculture and Natural Resources. Thank you for your time and consideration.

Sincerely,



Tim Knapp, Mayor
City of Wilsonville

ATTACHMENTS:

- Los Angeles Times, Jun 21, 2013, "Pesticide blamed in death of 25,000 bumblebees in Oregon"
- ABC News, Jun 22, 2013, "More Than 25,000 Bees Die in Oregon."
- Time magazine, August 19, 2013, "A World Without Bees: The Price We'll Pay If We Don't Figure Out What's Killing The Honeybee."

Pesticide blamed in death of 25,000 bumblebees in Oregon

June 21, 2013 | By Devin Kelly | *This post has been corrected. See the note below for details.*

A pesticide used to control aphids has been singled out as the cause in this week's deaths of tens of thousands of bumblebees in a retail parking lot in Oregon, state officials said Friday.

At least 25,000 bees were found dead and more were dying in a Target parking lot in Wilsonville, about 18 miles southwest of Portland, in what experts have described as the largest known die-off of bees in the United States.

Witnesses reported bees falling from trees and littering the ground.

Crews worked Friday morning to wrap protective netting, purchased by the city, around the 55 European linden trees in the area. Workers stood on cherry-pickers to place the bee-proof shade material around the large trees, which are in full bloom.

On Monday, concerned calls from shoppers prompted the Xerces Society for Invertebrate Conservation -- a Portland-area conservation group -- to sound an alarm. The Oregon State Department of Agriculture responded by sending staff to collect samples of insects and foliage from the linden trees.

State officials were able to directly link the deaths to the pesticide Safari, which was sprayed on the trees Saturday to control aphids, the department said Friday in a statement. Officials have not yet identified the property management agency or the crews that applied the pesticide.

"It was a mistake to put it on linden trees in bloom," said Dan Hilburn, director of plant programs with the Oregon State Department of Agriculture. Linden flowers contain nectar highly attractive to bees.

The pesticide, in a class called neonicotinoids, is lethal to bees and other pollinators. Honeybees, ladybird beetles (ladybugs) and syrphid flies were also found dead in the lot, said Scott Hoffman Black, executive director of the Xerces Society.

In terms of assessing penalties, investigators are focusing on whether the pesticide was applied inconsistently with its labeling, and whether the activity was conducted in a faulty, careless or negligent manner, said Dale Mitchell, the pesticide compliance program manager with the Oregon Department of Agriculture.

Violations can carry fines ranging from \$1,000 to \$10,000, Mitchell said.

In fact, the product label reads:

“This product is highly toxic to bees exposed to direct treatment or residues on blooming crops or weeds. Do not apply this product or allow it to drift to blooming crops or weeds if bees are visiting the treatment area.”

The environmental impact of neonicotinoids has come under increasing scrutiny worldwide. In April, the European Union banned the use of three types of neonicotinoid pesticides in crops that attract bees.

In the United States, one group, the Center for Food Safety, has sued the Environmental Protection Agency, saying that neonicotinoids are not regulated properly.

In a statement, the U.S. Environmental Protection Agency said it was aware of the Wilsonville bee deaths. “The EPA is tracking the incident closely but at this time we cannot comment on ongoing investigations,” the agency said.

The Wilsonville incident marked an ominous start to National Pollinator Week, an event designed to bring attention to the disappearance of bees. An estimated 10 million hives have been lost since colony collapse disorder first emerged in 2006.

Bumblebee hives are much smaller than honeybee hives, and an estimated 150 colonies were destroyed in Wilsonville, Black said.

[For the record, 5:22 p.m., June 25: An earlier version of this post said an estimated 10 billion hives been lost since colony collapse disorder first emerged in 2006. Only 10 million have been lost.]

More Than 25,000 Bees Die in Oregon

By Gillian Mohney
@gillianmohney

Jun 22, 2013 9:27pm



More than 25,000 bees were found dead in Wilsonville, Ore. (The Xerces Society for Invertebrate Conservatio/AP Photo)

The mystery of why thousands of bees fell from the sky has been solved, according to the Oregon Department of Agriculture.

The department announced Friday that it has determined an insecticide caused the deaths this week of 25,000 bees in Wilsonville, Ore.

The bees were found scattered across a parking lot earlier this week.

Mace Vaughn and his partner Rich Hatfield of the non-profit environmental group the Xerces Society worked with the Oregon Department of Agriculture to discover the cause by painstakingly picking up specimens of dead bees.

“We’ve lost a hundred, a hundred fifty colonies at least just from this area — just wiped them out,” Vaughn told ABCNews.com affiliate [KATU-TV](#) in Portland.

On Friday, the [Oregon Department of Agriculture determined the bees](#) were killed by an insecticide called Safari used to kill aphids. The trees where the insecticide was used are being netted to protect any surviving bees that might wander into the area.

The death of the bees in Oregon [comes as colony collapse disorder](#) threatens honey bee populations across the U.S.

According to the U.S. Department of Agriculture, beekeepers have been reported losing between 30 to 90 percent of their colonies since 2006. There is no known cause for the disorder, in which bees abruptly leave the hive.

Zakaria: The new al-Qaeda threat / **Ted Cruz:** / **Ferooqar:** Yellen over Summers for Fed chief / **Low Rolling in Vegas**

TIME

A
WORLD
WITHOUT
BEEES



THE PRICE WE'LL
PAY IF WE DON'T
FIGURE OUT
WHAT'S KILLING
THE HONEYBEE

BY BRYAN WALSH



THE PLIGHT OF HONEY

MASS DEATHS IN BEE COLONIES MAY MEAN DISASTER FOR FAI

HIT OF THE FLYBEE

FOR FARMERS—AND YOUR FAVORITE FOODS BY BRYAN WALSH

Y

YOU CAN THANK THE *APIS MELLIFERA*, better known as the Western honeybee, for 1 in every 3 mouthfuls of food you'll eat today. From the almond orchards of central California—where each spring billions of honeybees from across the U.S. arrive to pollinate a multibillion-dollar crop—to the blueberry bogs of Maine, the bees are the unsung, unpaid laborers of the American agricultural system, adding more than \$15 billion in value to farming each year. In June, a Whole Foods store in Rhode Island, as part of a campaign to highlight the importance of honeybees, temporarily removed from its produce section all the food that depended on pollinators. Of 453 items, 237 vanished, including apples, lemons and zucchini and other squashes. Honeybees “are the glue that holds our agricultural system together,” wrote journalist Hannah Nordhaus in her 2011 book, *The Beekeeper's Lament*.

And now that glue is failing. Around 2006, commercial beekeepers began noticing something disturbing: their honeybees were disappearing. Beekeepers would open their hives and find them full of honeycomb, wax, even honey—but devoid of actual bees. As reports from worried beekeepers rolled in, scientists coined an appropriately apocalyptic term for the mystery malady: colony-collapse disorder (CCD). Suddenly beekeepers found themselves in the media spotlight, the public captivated by the horror-movie mystery of CCD. Seven years later, honeybees are still dying on a scale rarely seen before, and the reasons remain mysterious. One-third of U.S. honeybee colonies died or disappeared during the past winter, a 42% increase over the year before and well above the 10% to 15% losses beekeepers used to experience in normal winters.

Though beekeepers can replenish dead hives over time, the high rates of colony loss are putting intense pressure on the industry and on agriculture. There were just barely enough viable honeybees in the U.S. to service this spring's vital almond pollination in California, putting a product



worth nearly \$4 billion at risk. Almonds are a big deal—they're the Golden State's most valuable agricultural export, worth more than twice as much as its iconic wine grapes. And almonds, totally dependent on honeybees, are a bellwether of the larger problem. For fruits and vegetables as diverse as cantaloupes, cranberries and cucumbers, pollination can be a farmer's only chance to increase maximum yield. Eliminate the honeybee and agriculture would be permanently diminished. “The take-home message is that we are very

‘THE TAKE-HOME MESSAGE IS THAT WE ARE **VERY CLOSE TO THE EDGE**. IT'S A ROLL OF THE DICE NOW.’

—JEFF PETTIS, USDA

close to the edge,” says Jeff Pettis, the research leader at the U.S. Department of Agriculture's Bee Research Laboratory. “It's a roll of the dice now.”

That's why scientists like Pettis are working hard to figure out what's bugging the bees. Agricultural pesticides were an obvious suspect—specifically a popular new class of chemicals known as neonicotinoids, which seem to affect bees and other insects even at what should be safe doses. Other researchers focused on bee-killing pests like the accurately named *Varroa destructor*, a parasitic mite that has ravaged honeybee colonies since it was accidentally introduced into the U.S. in the 1980s. Others still have looked at bacterial and viral diseases. The lack of a clear culprit only deepened the mystery and the fear, heralding what some greens call a “second silent spring,” a reference to Rachel Carson's breakthrough 1962 book, which is widely credited with helping launch the environmental movement. A quote that's often attributed to Albert Einstein became



Dead-out After repeated colony losses, Doan is ready to get out of the beekeeping business

a slogan: "If the bee disappears from the surface of the globe, man would have no more than four years to live."

One problem: experts doubt that Einstein ever said those words, but the misattribution is characteristic of the confusion that surrounds the disappearance of the bees, the sense that we're inadvertently killing a species that we've tended and depended on for thousands of years. The loss of the honeybees would leave the planet poorer and hungrier, but what's really scary is the fear that bees may be a sign of what's to come, a symbol that something is deeply wrong with the world around us. "If we don't make some changes soon, we're going to see disaster," says Tom Theobald, a beekeeper in Colorado. "The bees are just the beginning."

Sublethal Effects

IF THE HONEYBEE IS A VICTIM OF NATURAL menaces like viruses and unnatural ones like pesticides, it's worth remembering that the bee itself is not a natural resident of the continent. It was imported to North America in the 17th century, and it thrived until recently because it found a perfect niche in a food system that demands crops at ever cheaper prices and in ever greater quantities. That's a man-made, mercantile ecosystem that not only has been good for the bees and beekeepers but also has meant steady business and big revenue for supermarkets and grocery stores.

Jim Doan has been keeping bees since the age of 5, but the apiary genes in his family go back even further. Doan's father paid his way to college with the proceeds of his part-time beekeeping, and in 1973 he left the bond business to tend bees full time. Bees are even in the Doan family's English coat of arms. Although Jim went to college with the aim of becoming an agriculture teacher, the pull of the beekeeping business was too great.

For a long time, that business was very good. The family built up its operation in the town of Hamlin, in western New York, making money from honey and from pollination contracts with farmers. At the peak of his business, Doan estimates he was responsible for pollinating 1 out of 10 apples grown in New York, running nearly 6,000 hives, one of the biggest such operations in the state. He didn't mind the inevitable stings—"you have to be willing to be punished"—and he could endure the early hours. "We made a lot of honey, and we made a lot of money," he says.

All that ended in 2006, the year CCD hit the mainstream, and Doan's hives weren't spared. That winter, when he popped the covers to check on his bees—tipped off by a fellow beekeeper who experienced one of the first documented cases of CCD—Doan found nothing. "There were hundreds of hives in the backyard and no bees in them," he says. In the years since, he has experienced repeated losses, his bees growing sick and dying. To replace lost hives, Doan needs to buy new queens and split his remaining colonies, which reduces honey production and puts more pressure on his few remaining healthy bees. Eventually it all became unsustainable. In 2013, after decades in the business, Doan gave up. He sold the 112 acres (45 hectares) he owns—land he had been saving to sell after his retirement—and plans to sell his beekeeping equipment as well, provided

he can find someone to buy it. Doan is still keeping some bees in the meantime, maintaining a revenue stream while considering his options. Those options include a job at Walmart.

Doan and I walk through his backyard, which is piled high with bee boxes that would resemble filing cabinets, if filing cabinets hummed and vibrated. Doan lends me a protective jacket and a bee veil that covers my face. He walks slowly among the boxes—partly because he's a big guy and partly because bees don't appreciate fast moves—and he spreads smoke in advance, which masks the bees' alarm pheromones and keeps them calm. He opens each box and removes a few frames—the narrowly spaced scaffolds on which the bees build their honeycombs—checking to see how a new population he imported from Florida is doing. Some frames are choked with crawling bees, flowing honey and healthy brood cells, each of which contains an infant bee. But other frames seem abandoned, even the wax in the honeycomb crumbling. Doan lays these boxes—known as dead-outs—on their side.

He used to love checking on his bees. "Now it's gotten to the point where I look at the bees every few weeks, and it scares me," he says. "Will it be a good day, will they be alive, or will I just find a whole lot of junk? It depresses the hell out of me."

Doan's not alone in walking away from such unhappy work. The number of commercial beekeepers has dropped by some three-quarters over the past 15 years, and while all of them may agree that the struggle is just not worth it anymore, they differ on which of the possible causes is most to blame. Doan has settled on the neonicotinoid pesticides—and there's a strong case to be made against them.

The chemicals are used on more than 140 different crops as well as in home gardens, meaning endless chances of exposure for any insect that alights on the treated plants. Doan shows me studies of pollen samples taken from his hives that indicate the presence of dozens of chemicals, including the neonicotinoids. He has testified before Congress about the danger the chemicals pose and is involved in a lawsuit with other beekeepers and with green groups that calls on the Environmental Protection Agency (EPA) to suspend a pair of pesticides in the neonicotinoid class. "The impacts [from the pesticides] are not marginal, and they're not academic," says Peter Jenkins, a

SOCIETY IN A BOX

A HONEYBEE'S LIFE, DEATH AND WORLD

lawyer for the Center for Food Safety and a lead counsel in the suit. "They pose real threats to the viability of pollinators."

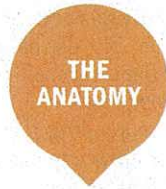
American farmers have been dousing their fields with pesticides for decades, meaning that honeybees—which can fly as far as 5 miles (8 km) in search of forage—have been exposed to toxins since well before the dawn of CCD. But neonicotinoids, which were introduced in the mid-1990s and became widespread in the years that followed, are different. The chemicals are known as systematics, which means that seeds are soaked in them before they're planted. Traces of the chemicals are eventually passed on to every part of the mature plant—including the pollen and nectar a bee might come into contact with—and can remain for much longer than other pesticides do. There's really no way to prevent bees from being exposed to some level of neonicotinoids if the pesticides have been used nearby. "We have growing evidence that neonicotinoids can have dangerous effects, especially in conjunction with other pathogens," says Peter Neumann, head of the Institute of Bee Health at the University of Bern in Switzerland.

Ironically, neonicotinoids are actually safer for farmworkers because they can be applied more precisely than older classes of pesticides, which disperse into the air. Bees, however, seem uniquely sensitive to the chemicals. Studies have shown that neonicotinoids attack their nervous system, interfering with their flying and navigation abilities without killing them immediately. "The scientific literature is exploding now with work on sublethal impacts on bees," says James Frazier, an entomologist at Penn State University. The delayed but cumulative effects of repeated exposure might explain why colonies keep dying off year after year despite beekeepers' best efforts. It's as if the bees were being poisoned very slowly.

It's undeniably attractive to blame the honeybee crisis on neonicotinoids. The widespread adoption of these pesticides roughly corresponds to the spike in colony loss, and neonicotinoids are, after all, meant to kill insects. Chemicals are ubiquitous—a recent study found that honeybee pollen was contaminated, on average, with nine different pesticides and fungicides. Best of all, if the problem is neonicotinoids, the solution is simple: ban them. That's what the European Commission decided to do this year, putting a two-year restriction on the use of some neonicotinoids.

Humans have been keeping honeybees for thousands of years, yet the insects still manage to surprise us. Lost in the debate over what is causing the death of bees is how intricately complex their lives are, from the tiniest brood to the virgin queen. After all, what other invertebrate communicates by dance?

—ALEXANDER ACIMAN AND HEATHER JONES



THE ANATOMY

Things you may not know about *Apis mellifera*

EYES
Bees have five of them—two large compound eyes and three ocelli used to detect light intensity. A worker's eyes have nearly 7,000 lenses.

WING HOOKS
Hooks enable the bee to attach one of each set of wings together during flight for maximum efficiency.

ELECTROSTATIC CHARGE
A charge on the bee's hair attracts pollen.

THE PROBOSCIS
The airtight, strawlike tube sucks up nectar and also works in reverse to feed offspring from a honey stomach.

MANDIBLE
The jaws help bite and pack pollen as well as shape wax for building honeycomb.

LEGS
Brushes scrape pollen from front to back, where it collects in the pollen basket, a sac attached to the rear leg.



■ The oldest known honeybee specimen dates from 100 million years ago.

■ The 17th century naturalist Jan Swammerdam discovered that the king bee had ovaries and was, in fact, a queen.

■ In 1923 scientist Rudolf Steiner predicted that within 100 years artificial cultivation of honeybees would have severe consequences on the bee population.

THE BREEDS

There are 20,000 species of bees worldwide, but only six main types are kept commercially:

- | | |
|-----------|-----------|
| ITALIAN | CAUCASIAN |
| RUSSIAN | GERMAN |
| CARNIOLAN | BUCKFAST |

1/12 teaspoon

Amount of honey a worker bee will produce during its short life

\$15 billion

Estimated annual amount by which bee pollination increases crop value



In a single trip, a worker bee can visit up to 100 flowers and carry more than half its weight in pollen

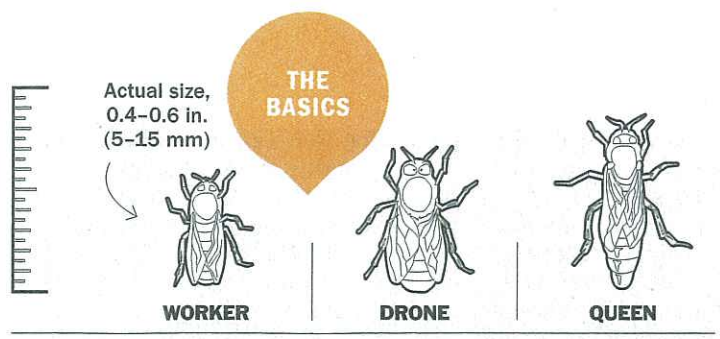
In or (0.4 wor 55,00

honey-
from
ago.

immer-
it the
ns and
n.

udolf
hat

n of
ave
son



	WORKER	DRONE	QUEEN
DUTIES	Construction, storage, keeping the nursery, guarding, caretaking, scouting and foraging.	Mates with a virgin queen in midair. Can fly backward, rotate and flip.	Lays up to 1,500 eggs a day, possibly more. Secretes pheromones to control workers.
LIFE SPAN	20-30 days	Dies after mating	3-7 years



WINGS
A bee has two sets of wings. Rapid flapping generates warmth and evaporates water from nectar to make honey.

HONEY STOMACH
A second reservoir where nectar is temporarily stored before being regurgitated.

STING
When a bee stings, a barb prevents the stinger from being pulled out; the bee then tears its abdomen while freeing itself before dying.

VENOM
The unique mixture of chemicals that causes a sting to hurt may play a role in stopping the spread of HIV, which venom has been shown to destroy.

WAX PLATES
Bees secrete wax beneath plates on their abdomen and use it to build honeycomb.

ingle
worker
n visit
100
s and
more
alf its
ht in
len

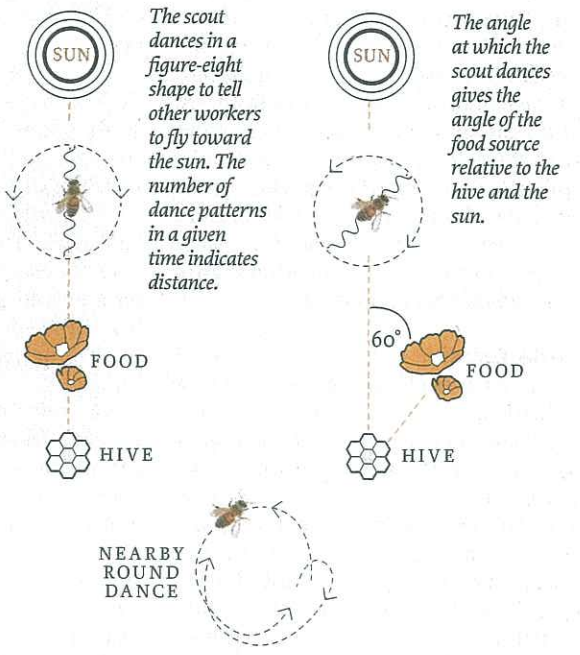
In order to produce 1 lb. (0.4 kg) of honey, hive workers fly a collective 55,000 miles (89,000 km)

and tap
2,000,000
flowers

THE HIVE
A colony typically comprises 20,000 to 30,000 bees. Although it has long been believed that bees hibernate in the winter, the colony creates a winter ecosystem inside the hive and lives off honey, with the bees maintaining warmth by working their wings. Middle-aged worker bees build by attaching each comb to the walls of the hive—a process that often requires more than 2 lb. (1 kg) of wax.

THE DANCE

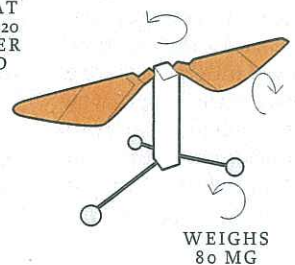
When a scout worker has successfully located food, it alerts its fellow foragers about the food's location with a series of dance moves. Through the number of turns, the duration of the dance and the moves themselves, the scout can communicate the distance to the food, the angle of the food to the sun and whether it is near or far.



THE FUTURE

THE ROBOBEE
Harvard's School of Engineering and Applied Sciences conducted the first successful flight of a life-size robotic fly in 2007. The lab has received \$10 million in grant money from the National Science Foundation to build a network of autonomous artificial bees.

ARTIFICIAL MUSCLES CAN BEAT WINGS 120 TIMES PER SECOND



AIRFOILS ROTATE INDEPENDENTLY

WEIGHS 80 MG

APPLICATIONS

- SEARCH AND RESCUE
- ARTIFICIAL POLLINATION
- COVERT SURVEILLANCE
- HIGH-RESOLUTION WEATHER AND CLIMATE MAPPING
- TRAFFIC MONITORING

Sources: Washington University School of Medicine; PBS; USDA; Roger A. Morse and Nicholas W. Calderone, Cornell University; Bee/Rose-Lynn Fisher; National Geographic; Harvard School of Engineering and Applied Sciences; Encyclopaedia Britannica; Bees/Lectures by Rudolf Steiner; North Carolina State College of Agriculture and Life Sciences; University of Illinois at Urbana-Champaign

Photograph by Tom Schierlitz for TIME

But while the EPA is planning to review neonicotinoids, a European-style ban is unlikely—in part because the evidence is still unclear. Beekeepers in Australia have been largely spared from CCD even though neonicotinoids are used there, while France has continued to suffer bee losses despite restricting the use of the pesticides since 1999. Pesticide makers argue that actual levels of neonicotinoid exposure in the field are too low to be the main culprit in colony loss. “We’ve dealt with insecticides for a long time,” says Randy Oliver, a beekeeper who has done independent research on CCD. “I’m not thoroughly convinced this is a major issue.”

Hostile Terrain

EVEN IF PESTICIDES ARE A BIG PART OF THE bee-death mystery, there are other suspects. Beekeepers have always had to protect their charges from dangers such as the American foulbrood—a bacterial disease that kills developing bees—and the small hive beetle, a pest that can infiltrate and contaminate colonies. Bloodiest of all is the multidecade war against the Varroa destructor, a microscopic mite that burrows into the brood cells that host baby bees. The mites are equipped with a sharp, two-pronged tongue that can pierce a bee’s exoskeleton and suck its hemolymph—the fluid that serves as blood in bees. And since the Varroa can also spread a number of other diseases—they’re the bee equivalent of a dirty hypodermic needle—an uncontrolled mite infestation can quickly lead to a dying hive.

The Varroa first surfaced in the U.S. in 1987—likely from infected bees imported from South America—and it has killed billions of bees since. Countermeasures used by beekeepers, including chemical miticides, have proved only partly effective. “When the Varroa mite made its way in, it changed what we had to do,” says Jerry Hayes, who heads Monsanto’s commercial bee work. “It’s not easy to try to kill a little bug on a big bug.”

Other researchers have pointed a finger at fungal infections like the parasite *Nosema ceranae*, possibly in league with a pathogen like the invertebrate iridescent virus. But again, the evidence isn’t conclusive: some CCD-afflicted hives show evidence of fungi or mites or viruses, and others don’t. Some beekeepers are skeptical that there’s an underlying problem at all, preferring to blame CCD on what they call PPB—piss-poor beekeeping, a failure of beekeepers to stay on top of colony health. But while not every major beekeeper has suffered catastrophic loss, colony failures have been widespread for long enough that it seems perverse to blame the human victims. “I’ve been keeping bees for decades,” says Doan. “It’s not like I suddenly forgot how to do it in 2006.”

There’s also the simple fact that beekeepers live in a country that is becoming inhospitable to honeybees. To survive, bees need forage, which means flowers and wild spaces. Our industrialized agricultural system has conspired against that, transforming the countryside into vast stretches of crop monocultures—factory fields of corn or soybeans that are little more than a desert for honeybees starved of pollen and nectar. Under the Conservation Reserve Program (CRP), the government rents land from farmers and sets it aside, taking it out of production to conserve soil and preserve wildlife. But as prices of commodity crops like corn and soybeans have skyrocketed, farmers have

found that they can make much more money planting on even marginal land than they can from the CRP rentals. This year, just 25.3 million acres (10.2 million hectares) will be held in the CRP, down by one-third from the peak in 2007 and the smallest area in reserve since 1988.

Lonely Spring

FOR ALL THE ENEMIES THAT ARE MASSING against honeybees, a bee-pocalypse isn’t quite upon us yet. Even with the high rates of annual loss, the number of managed honeybee colonies in the U.S. has stayed stable over the past 15 years, at about 2.5 million. That’s still significantly down from the 5.8 million colonies that were kept in 1946, but that shift had more to do with competition from cheap imported honey and the general rural depopulation of the U.S. over the past half-century. (The number of farms in the U.S. fell from a peak of 6.8 million in 1935 to just 2.2 million today, even as food production has ballooned.) Honeybees have a remarkable ability to regenerate, and year after year the beekeepers who remain have been able to regrow their stocks after a bad loss. But the burden on beekeepers is becoming unbearable. Since 2006 an estimated 10 million beehives have been lost, at a cost of some \$2 billion. “We can replace the bees, but we can’t replace beekeepers with 40 years of experience,” says Tim Tucker, the vice president of the American Beekeeping Federation.

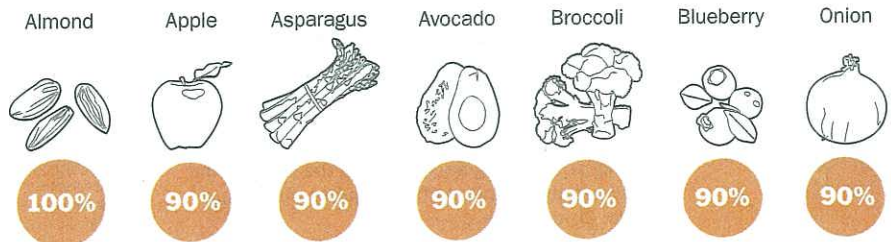
As valuable as honeybees are, the food system wouldn’t collapse without them. The backbone of the world’s diet—grains like corn, wheat and rice—is self-pollinating. But our dinner plates would be far less colorful, not to mention far less nutritious, without blueberries, cherries, watermelons, lettuce and the scores of other plants that would be challenging to raise commercially without honeybee pollination. There could be replacements. In southwest China, where wild bees have all but died out thanks to massive pesticide

‘WE CAN REPLACE THE BEES, BUT WE CAN’T REPLACE BEEKEEPERS WITH 40 YEARS OF EXPERIENCE.’

—TIM TUCKER, VICE PRESIDENT, AMERICAN BEEKEEPING FEDERATION

THE IMPACT ON THE FARM

Although many crops are only partially dependent on bee pollination, others, like the almond, cannot get by without it. According to the USDA, one-third of the food in our diet relies to some extent on bee pollination.





Bee bust Doan believes pesticides are chiefly responsible for the high death rates in his honeybee operation

use, farmers laboriously hand-pollinate pear and apple trees with brushes. Scientists at Harvard are experimenting with tiny robobees that might one day be able to pollinate autonomously. But right now, neither solution is technically or economically feasible. The government could do its part by placing tighter regulations on the use of all pesticides, especially during planting season. There needs to be more support for the CRP too to break up the crop monocultures that are suffocating honeybees. One way we can all help is by planting bee-friendly flowers in backyard gardens and keeping them free of pesticides. The country, says Dennis vanEngelsdorp, a research scientist at the University of Maryland who has studied CCD since it first emerged, is suffering from a “nature deficit disorder”—and the bees are paying the price.

But the reality is that barring a major change in the way the U.S. grows food, the pressure on honeybees won't subside.

There are more than 1,200 pesticides currently registered for use in the U.S.; nobody pretends that number will be coming down by a lot. Instead, the honeybee and its various pests are more likely to be changed to fit into the existing agricultural system. Monsanto is working on an RNA-interference technology that can kill the Varroa mite by disrupting the way its genes are expressed. The result would be a species-specific self-destruct mechanism—a much better alternative than the toxic and often ineffective miticides beekeepers have been forced to use. Meanwhile, researchers at Washington State University are developing what will probably be the world's smallest sperm bank—a bee-genome repository that will be used to crossbreed a more resilient honeybee from the 28 recognized subspecies of the insect around the world.

Already, commercial beekeepers have adjusted to the threats facing their charges by spending more to provide

supplemental feed to their colonies. Supplemental feed raises costs, and some scientists worry that replacing honey with sugar or corn syrup can leave bees less capable of fighting off infections. But beekeepers living adrift in a nutritional wasteland have little choice. The beekeeping business may well begin to resemble the industrial farming industry it works with: fewer beekeepers running larger operations that produce enough revenue to pay for the equipment and technologies needed to stay ahead of an increasingly hostile environment. “Bees may end up managed like cattle, pigs and chicken, where we put them in confinement and bring the food to them,” says Oliver, the beekeeper and independent researcher. “You could do feedlot beekeeping.”

That's something no one in the beekeeping world wants to see. But it may be the only way to keep honeybees going. And as long as there are almonds, apples, apricots and scores of other fruits and vegetables that need pollinating—and farmers willing to pay for the service—beekeepers will find a way.

So if the honeybee survives, it likely won't resemble what we've known for centuries. But it could be worse. For all the recent attention on the commercial honeybee, wild bees are in far worse shape. In June, after a landscaping company sprayed insecticide on trees, 50,000 wild bumblebees in Oregon were killed—the largest such mass poisoning on record. Unlike the honeybee, the bumblebee has no human caretakers. Globally, up to 100,000 animal species die off each year—nearly every one of them without fanfare or notice. This is what happens when one species—that would be us—becomes so widespread and so dominant that it crowds out almost everything else. It won't be a second silent spring that dawns; we'll still have the buzz of the feedlot honeybee in our ears. But humans and our handful of preferred species may find that all of our seasons have become lonelier ones.

HANNAH WHITAKER FOR TIME (2)

