

Background

2010 - USFWS decision to list Sage Grouse as “Warranted but Precluded”

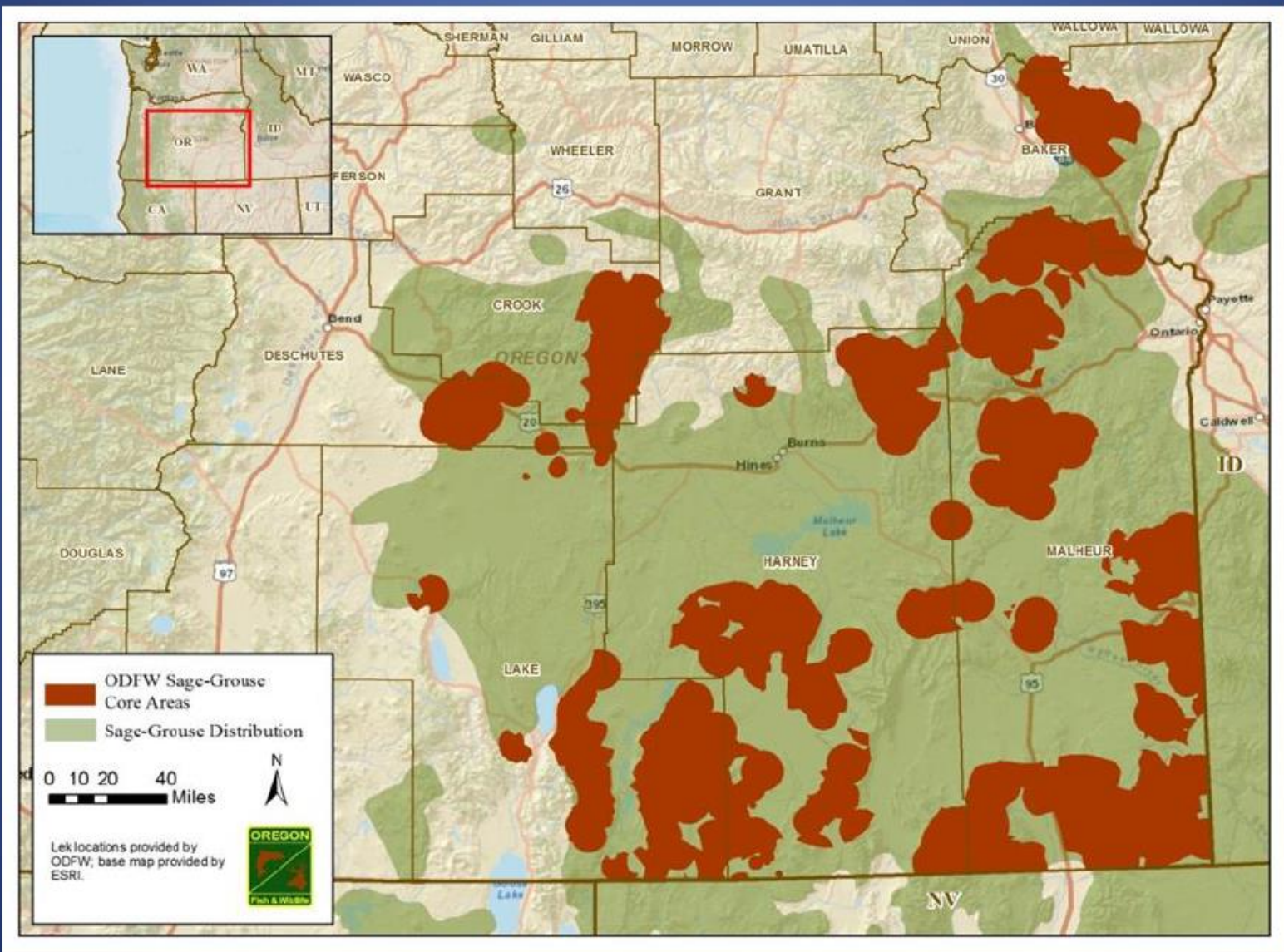
- Wildfire
- Invasive Weeds and Juniper
- Habitat Fragmentation

2011- Oregon Fish & Wildlife Commission Sage Grouse Conservation Strategy

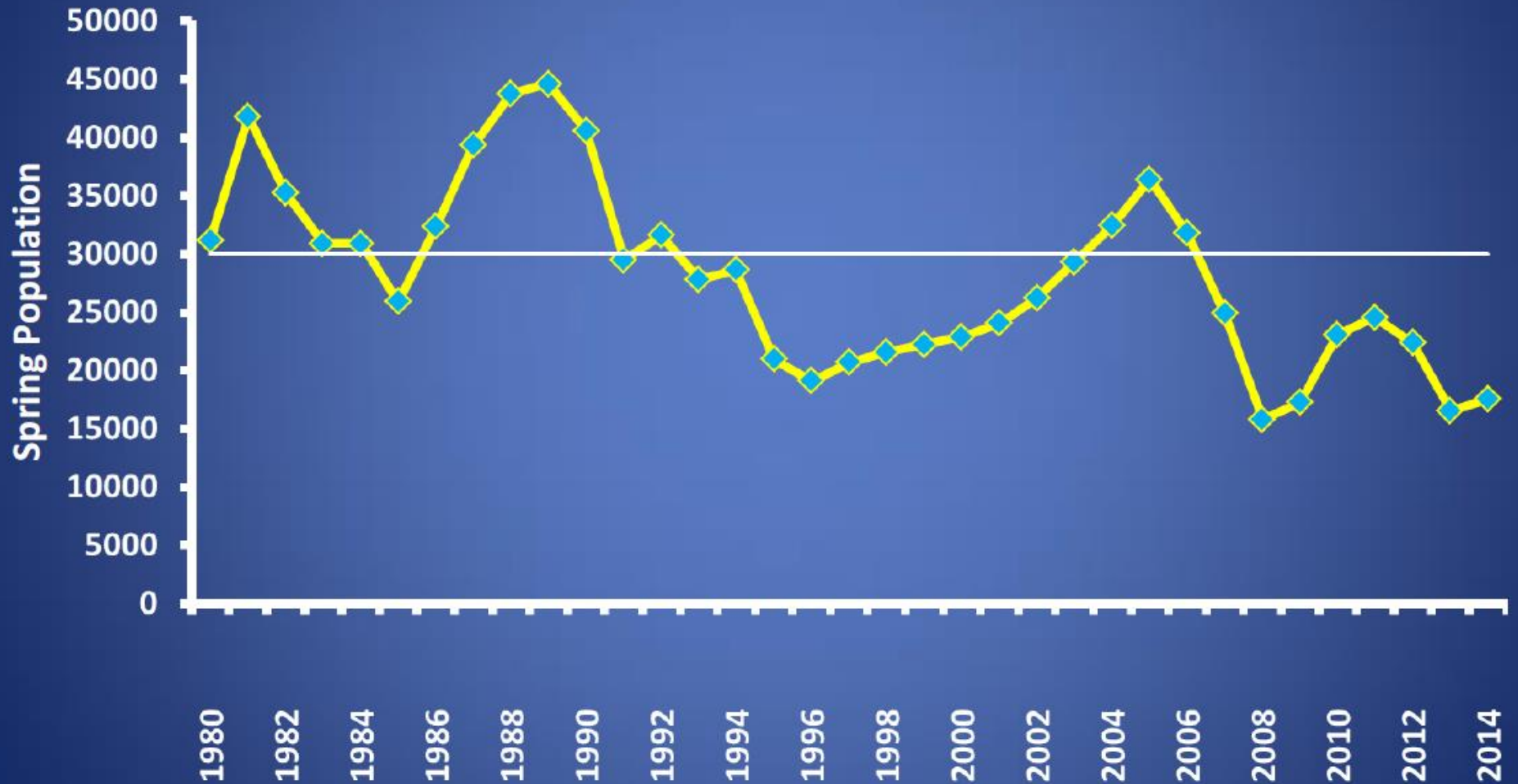
- Core Areas
 - 90% of breeding population
 - Avoid Impacts in Core Areas

2015/16 – USFWS Listing Determination

Sage-Grouse Core Areas



Oregon GSG Population Trend



SageCon Funding

(Governor's Recommended Budget)

SageCon		
ODF – 120	Sage Grouse-Fire Package-Rural Fire Protection Association Support – Support for Rangeland Fire Protection Associations.	1,659,130
ODA-390	Sage Grouse-Invasives and Juniper – Incentive payments to landowners for weed and juniper control.	500,000
ODFW – 130	SageCon-Coordination of All-Lands Mitigation Program – Coordinator to lead completion of mitigation framework.	350,000
ODFW - 105	Sage Grouse Initiative – Conservation practices to alleviate threats to sage grouse while improving sustainability of working ranches.	90,000
ODFW - 132	Pre- and Post-Wildfire Resilience – Funding to implement pre-fire actions that improve resilience of sagebrush habitat to wildfire, and promote effective recovery of habitat post-fire, improving health of rangeland and Sage Grouse habitat.	1,350,000
ODA-320	Oregon Invasive Species Council (Sage Grouse) - Improves Oregon's overall response to invasive species including restoration and protection of Sage Grouse habitat.	100,000
DLCD - 108	Sage Grouse-Local Grants and Statewide Coordinator – Coordinate Oregon's All-Lands Sage Grouse Program. Local grants for implementation of county Sage Grouse programs.	438,000

Total SageCon Funding: \$ 3,637,980

Natural Resources Conservation Service Funding (RCCP)

The Oregon Model to Protect Sage Grouse

- NRCS Funding: \$9 million
Combined Partner Funding: \$9 million
Location: Baker, Crook, Deschutes, Grant, Harney, Lake, Malheur and Union counties
Lead partner: Oregon Association of Conservation Districts
- This project will provide technical and financial assistance to private landowners in Eastern Oregon's to enroll in 30-year Candidate Conservation Agreements with Assurances. These agreements allow producers and ranchers to continue sage grouse habitat improvement practices and be protected from future requirements if the species is listed under the federal Endangered Species Act.