

2016 Jefferson County Courthouse





SERVICE LOBBY LOOKING NE



SERVICE LOBBY LOOKING EAST



SERVICE LOBBY LOOKING SE



COURTROOM 3 LOOKING EAST



SERVICE LOBBY LOOKING NW



SERVICE LOBBY LOOKING SOUTH

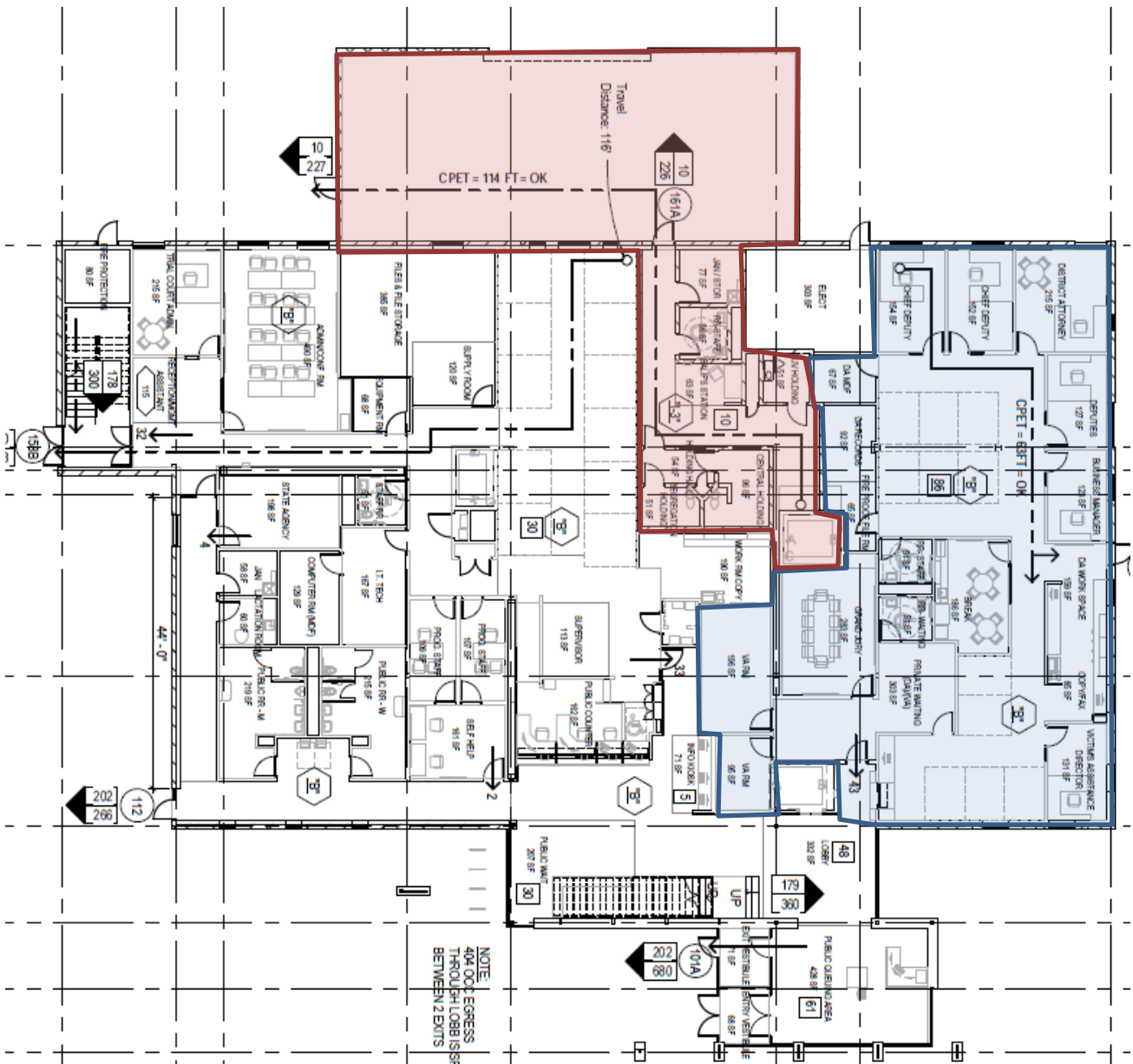


COURTROOM 3 LOOKING WEST (FUTURE PHASE)



COURTROOM 3 ENTRY





NOTE
404 OCC EGRESS
THROUGH LOBBY IS
SPECIFIED BETWEEN 2 EXITS

FRONT ENTRANCE

