

Oregon Department of Education
Responses to 2015 Ways and Means Information Requests
3-5-15

From the March 4, 2015 meeting of Education Subcommittee:

**1. Please provide organizational charts for prior years (e.g., 2012, 2013, and 2014).
(Representative Komp)**

RESPONSE: Attached are organizational charts from prior years.

The organizational structure shown in the 2007-09 chart remained unchanged for 2009-11 and the first year of the 2011-13 biennium (*i.e.*, 2011-12).

On July 1, 2012, pursuant to SB 552, the Governor became Superintendent of Public Instruction upon departure of the previous incumbent. The Governor appointed a deputy superintendent later that month. The attached 2012 organizational chart reflects that change. It also reflects organizational changes brought about by other legislation (*e.g.*, SB 909 [2011], which established the Oregon Education Investment Board and the Chief Education Officer, who was initially appointed in May 2012).

In addition to these organization charts, for your convenience we are resubmitting the 2015 organization chart previously provided.



ODE Past Org
Charts.pdf



Org Chart - Summary
Level

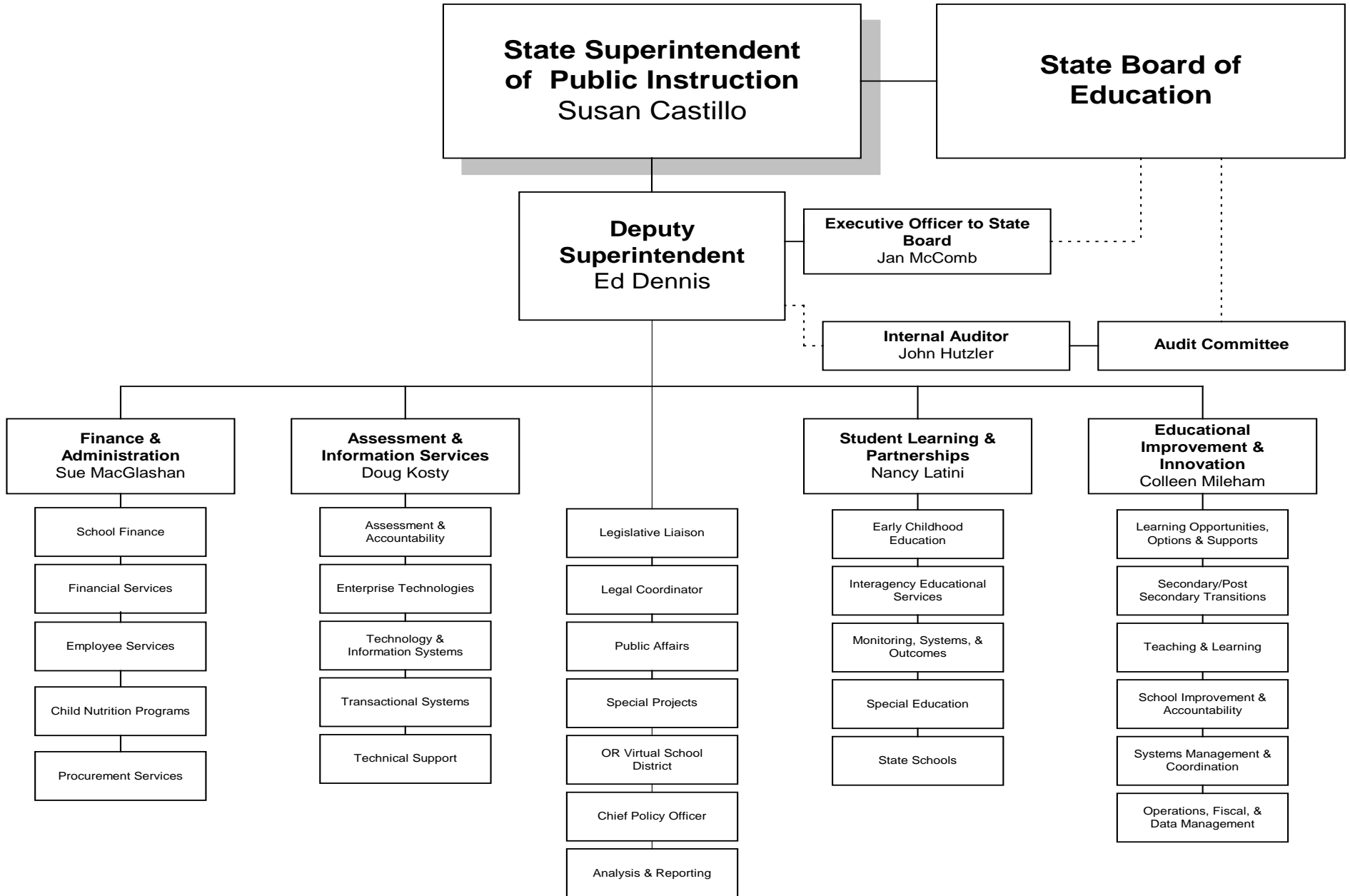
2. Regarding former Oregon School for the Blind (OSB) students, where are they now and what services are they receiving? (Representative Huffman)

RESPONSE: We provided initial information yesterday in response to this question from Tuesday’s public hearing but indicated we were waiting for certain data for school years 2012-13 and 2013-14. We now have that information and have updated the table presented earlier.

School Year	Enrolled in Public School Setting (a)	Home Instruction (b)	Not enrolled in School (c)	Graduated (d)	Aged-out (no longer eligible) (e)	Moved out of state (f)	Total Students remaining (a) + (b) +(c)
2009-10	22	0	3	0	0	2	25
2010-11	15	1	0	1	6	2	16
2011-12	13	0	0	1	2	0	13
2012-13	9	0	0	0	0	0	9
2013-14	9	0	0	0	2	0	7
2014-15	6	0	1	N/A	0	0	7

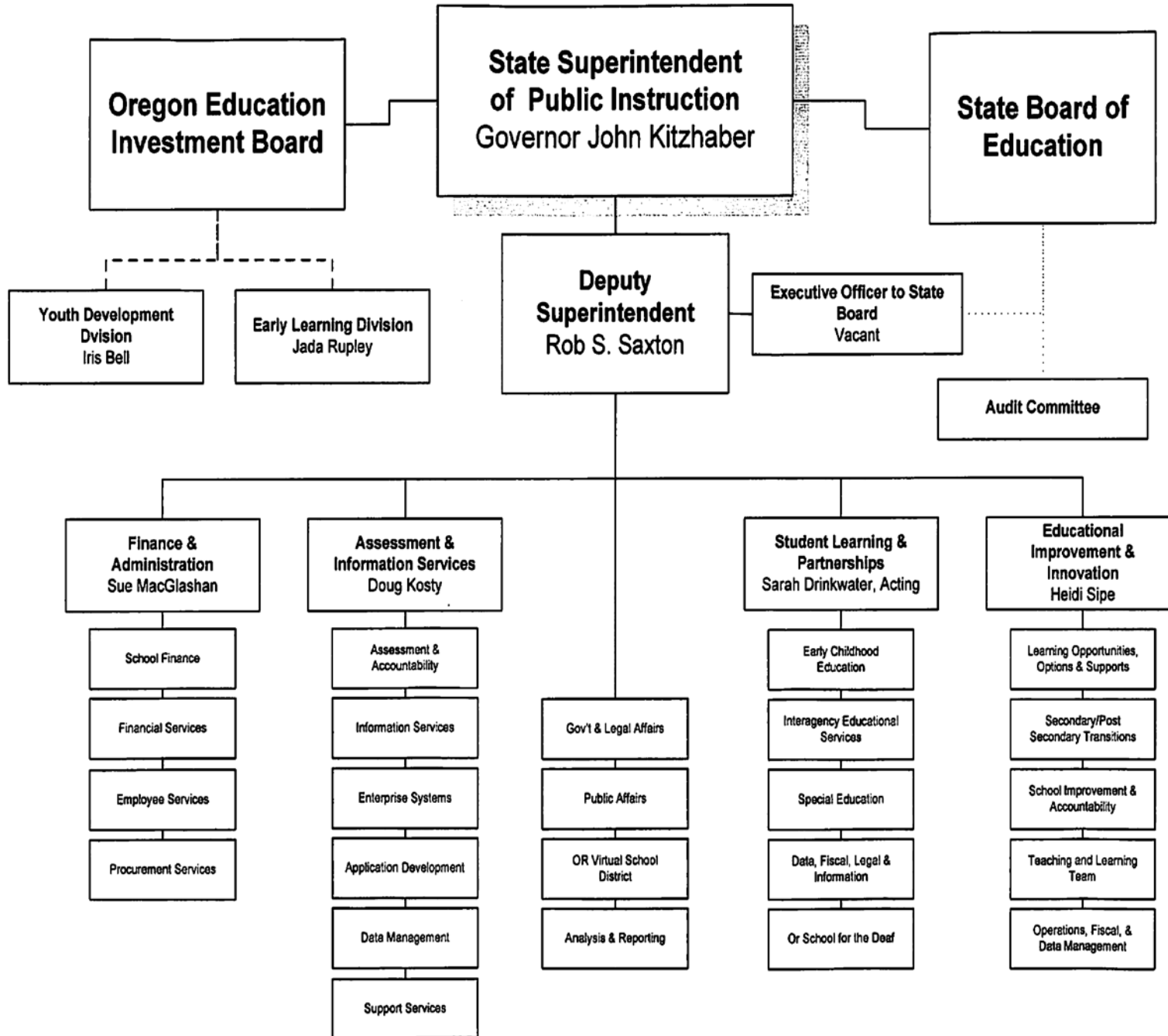
No former OSB students currently are enrolled at the Washington State School for the Blind.

Organization Overview 2007-09

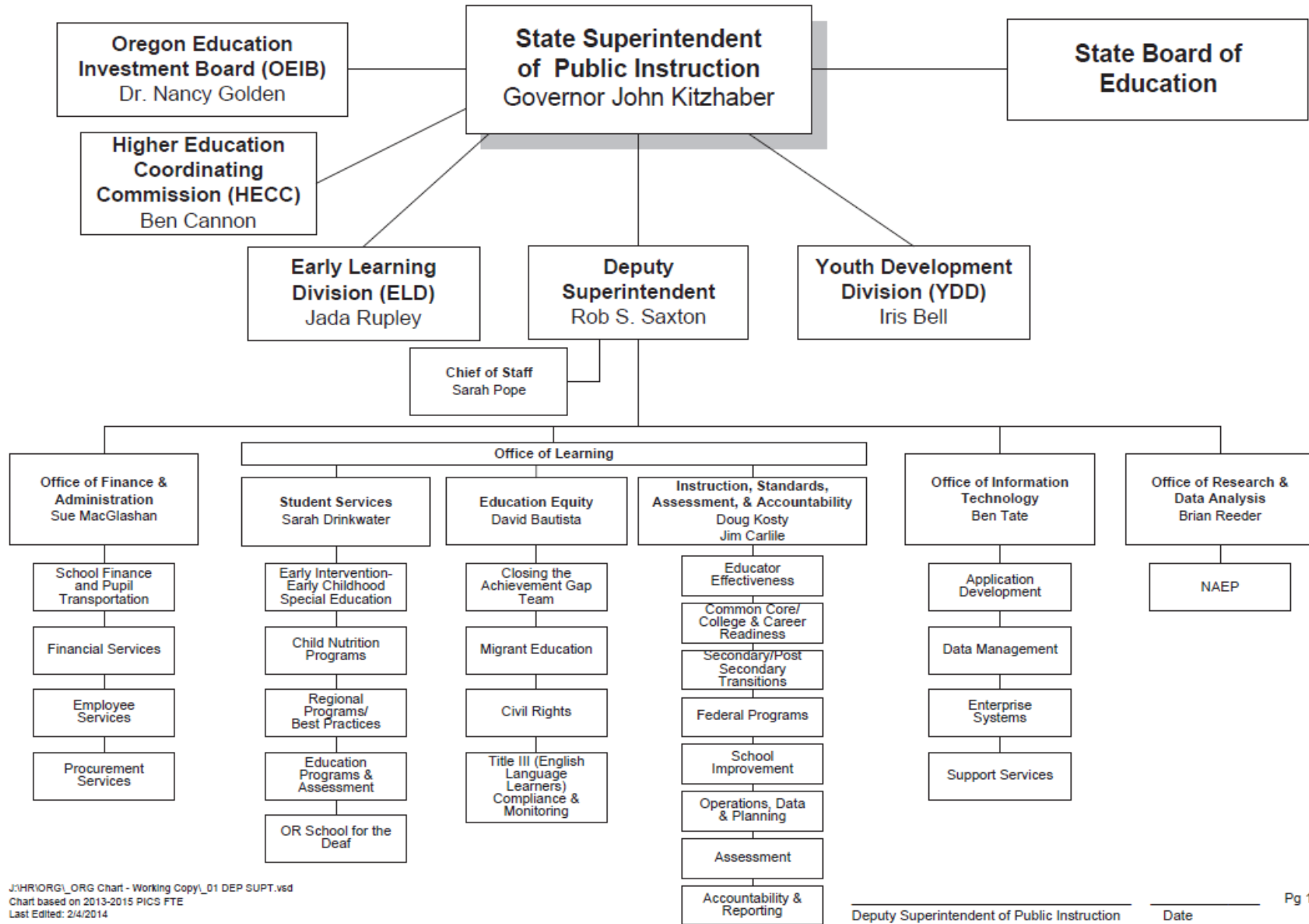


OREGON DEPARTMENT OF EDUCATION

Organization Overview 2012



OREGON DEPARTMENT OF EDUCATION Organization Overview 2014



Organization Overview 2015

