



Ways and Means Budget Overview 2015 Session

March 9, 2015



Agenda

Commission Overview

- Mission
- Organization
- Operation

Commission Performance

Budget Overview and Policy Option Packages



Mission Statement and Statutory Authority

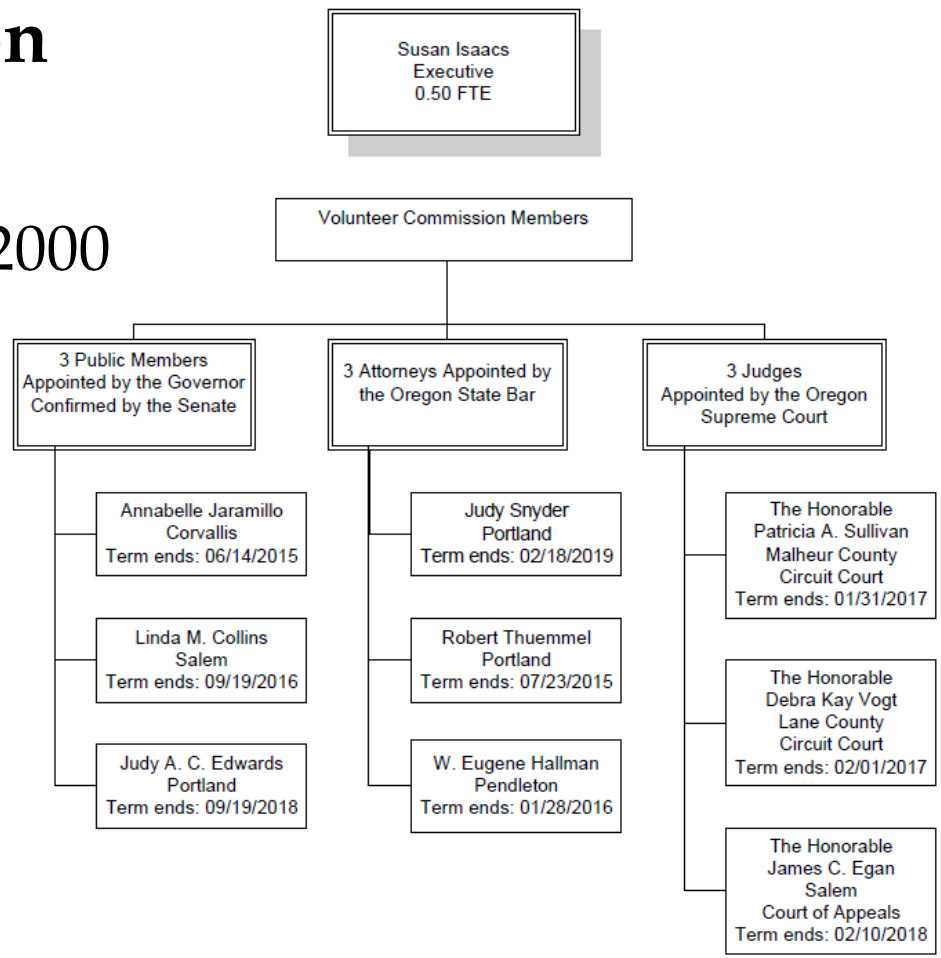
The mission of the Commission is to ensure the quality and effectiveness of the state judicial system.

- Statutory authority under ORS 1.410 to ORS 1.480.
- Acts upon complaints of judicial misconduct and disability
- Jurisdiction over Oregon's:
 - 32 Justices of the Peace
 - 20 Appellate Court Judges
 - 53 Plan B Senior Judges
 - 173 Circuit Court Judges
 - Tax Court
 - Pro Tem Judges
- No jurisdiction over municipal court judges, arbitrators or administrative law judges



Commission Organization

- One half-time Executive Director - in position since 2000
- Volunteer Commission Members
 - Three Public Members
 - Three Bar Members
 - Three Judges





Operations

Annual Complaints

- 2012: 163 new complaints
- 2013: 107 new complaints
- 2014: 128 new complaints

Bi-monthly Commission meetings

- Assess merit of complaints
- Assign contracted investigators and possible prosecutor if merit is found

Commission holds hearings and makes recommendations to the Supreme Court concerning possible sanctions.



Performance and Improvement Efforts

- Most complaints handled at the next scheduled Commission meeting
- During 2013-15 three complaints required additional investigation
 - One prosecution has been approved for this biennium – two possible prosecutions still pending

Improvement Efforts

- Created tools to allow for remote participation in Commission meetings
- Beginning process to allow for e-filing of complaints



Budget Overview - CSL

- **\$219,814 – 6.4% increase over 2013-15 LAB**
 - Operations \$202,306 (includes \$10,212 in PS costs moved by PICS system)
 - Extraordinary Expenses (investigational/prosecutorial costs) \$17,508

2013 - 15 LAB = \$206,902



Budget Overview - ARB

- ARB \$303,452
- Policy Option Packages to address workload:
 - POP 101 – Executive Director to 0.75 FTE
 - Address workload issues impacting Commission
 - \$56,038
 - POP 102 – Professional Services Administrative Support
 - Provides for additional professional services for the Commission to contract for part-time administrative support to reduce workload
 - \$27,600



Commission on Judicial Fitness and Disability



Questions