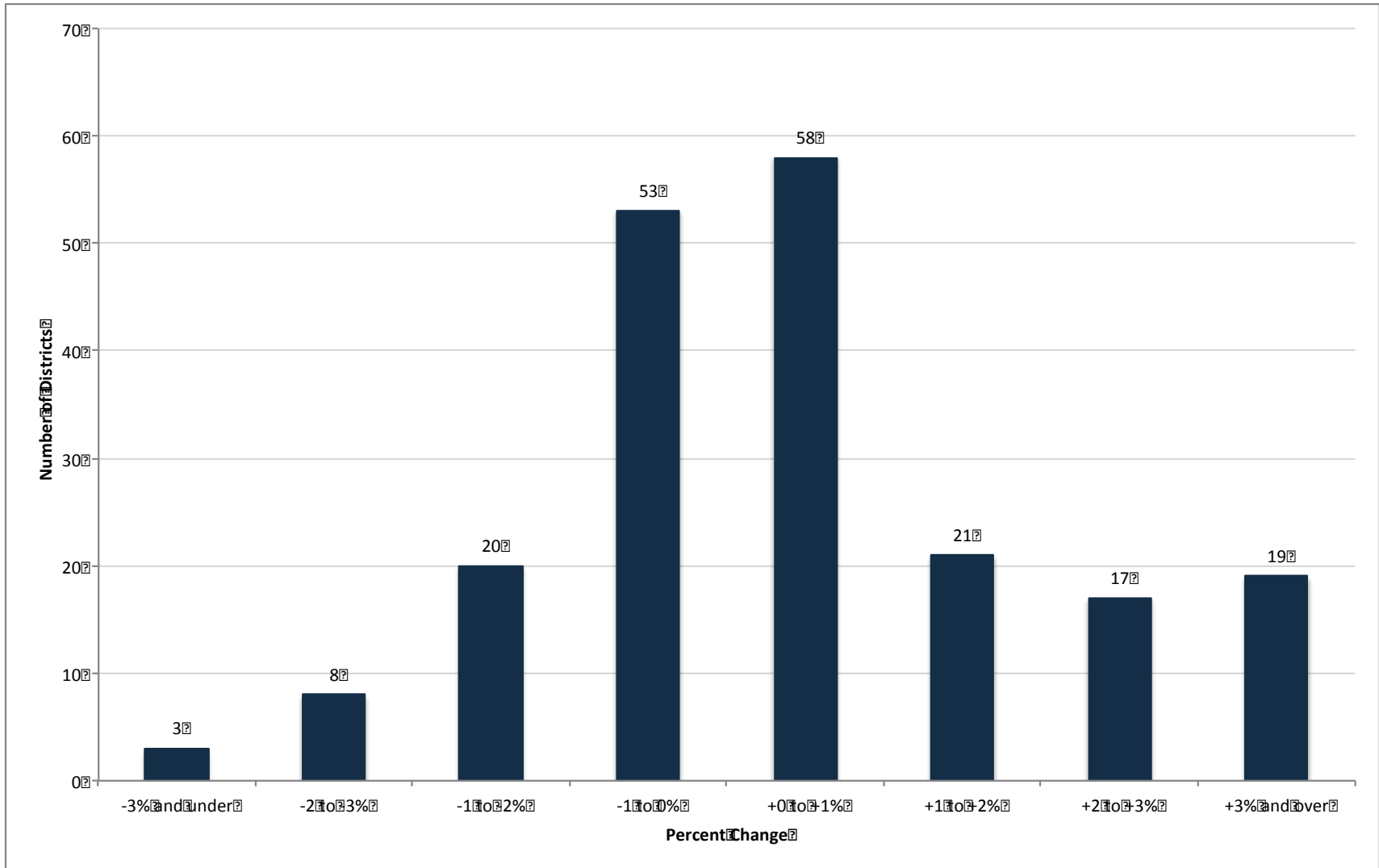


# Distributional Effects of HB 2657

February 2015

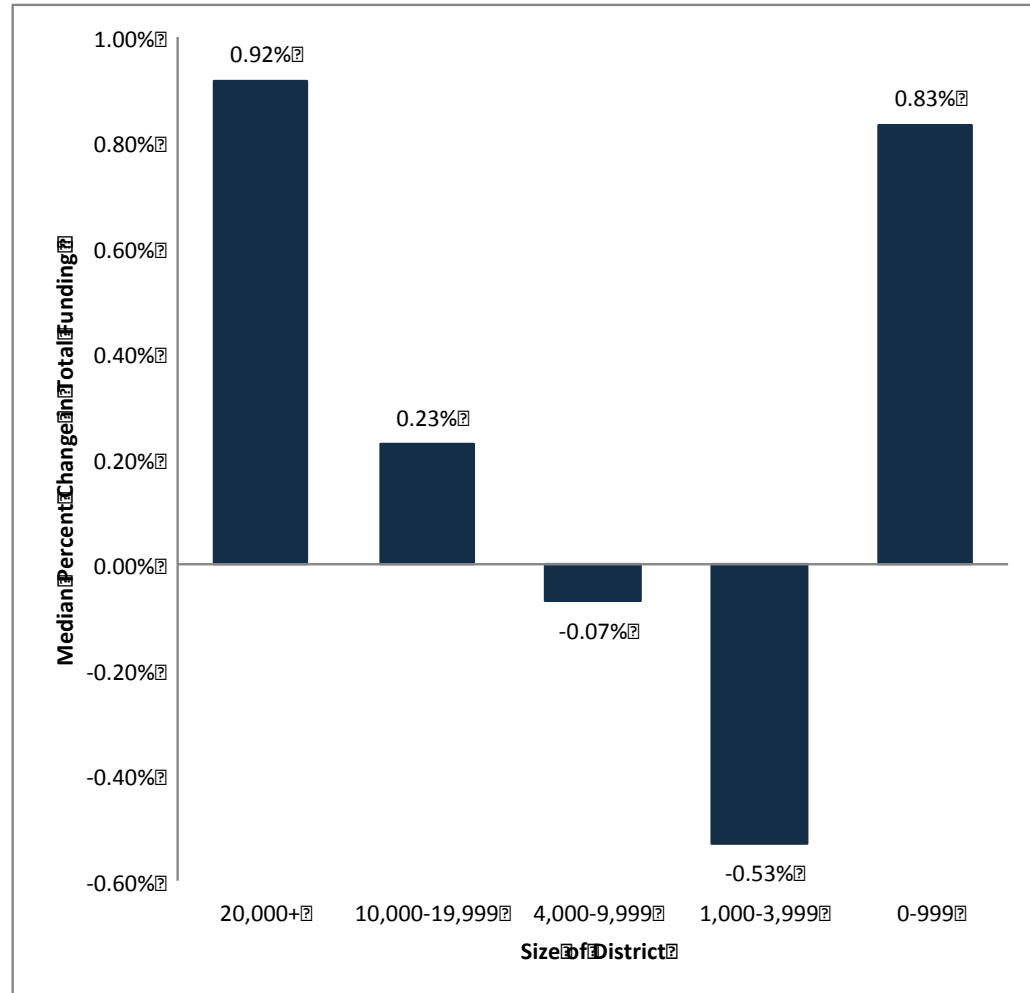
# Most Districts Would Experience Relatively Small Changes



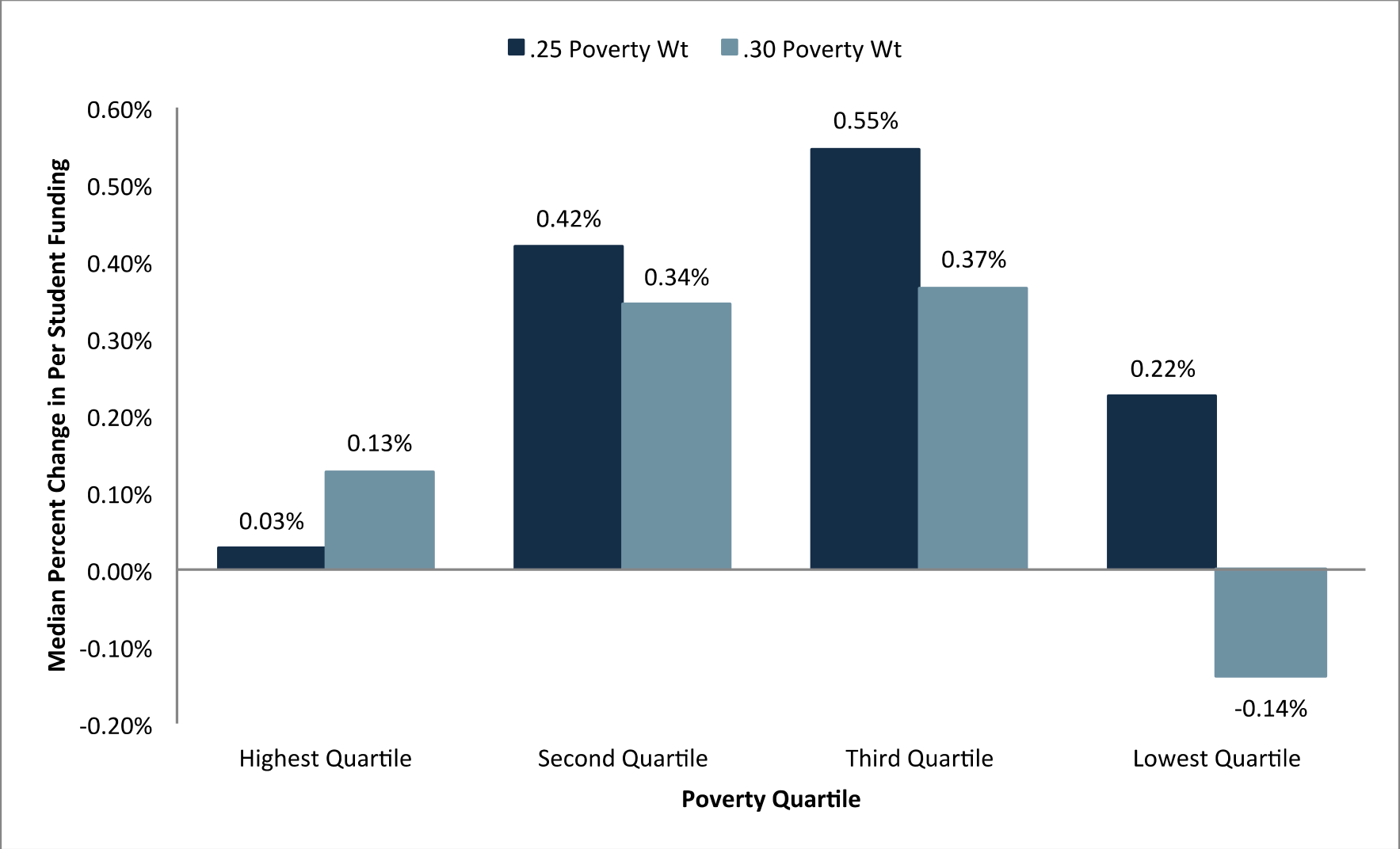
Source: Oregon Department of Education; ECONorthwest calculations

# Small Districts Experience Relatively Large Changes

Size of District	Number of Districts	Share of Total Students	Number of Districts with +/- 3% Change
20,000+	3	22%	0
10,000 - 19,999	10	25%	2
4,000 - 9,999	24	25%	0
1,000 - 3,999	50	20%	1
0 - 999	112	7%	19



# Adjusting Weight on Poverty Can Mitigate Adverse Distributional Impacts



Source: Oregon Department of Education; ECONorthwest calculations