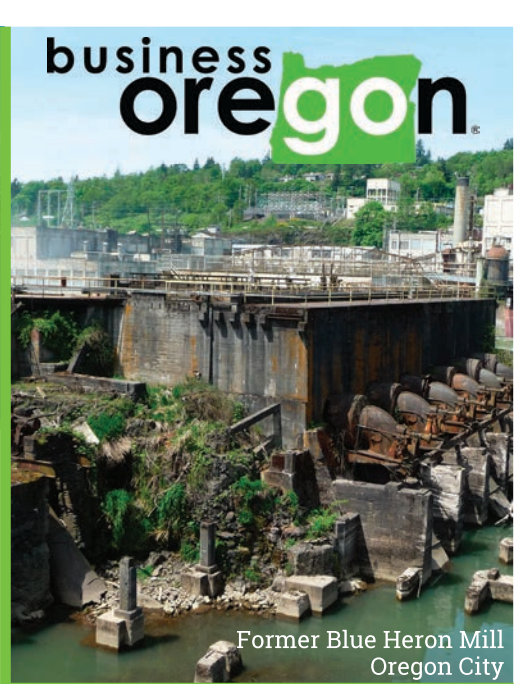




Former Zidell Shipbreaking Yard, Portland



Former Blue Heron Mill
Oregon City

BROWNFIELDS REMEDIATION SPURS ECONOMIC GROWTH

\$1
of state investment

in 51 redevelopment projects

leveraged
\$116
of other funds

resulting in

\$2.3B in
economic activity

creating

8,900 on-site
and indirect jobs

generating

\$19M in tax
revenue to the state

What is a brownfield?

A brownfield is a vacant or underutilized property where actual or perceived environmental contamination complicates its expansion or redevelopment.

Why should we care?

Cleanup costs and risks deter potential developers and create a barrier to community revitalization and economic development.



Former Asphalt Batch Plant
McMinnville

OREGON'S BROWNFIELDS

Brownfields exist across Oregon where there has been development or industry. This map shows known non-residential sites that have been contaminated by either petroleum or hazardous substances.

An estimated **13,501** brownfields exist in Oregon.

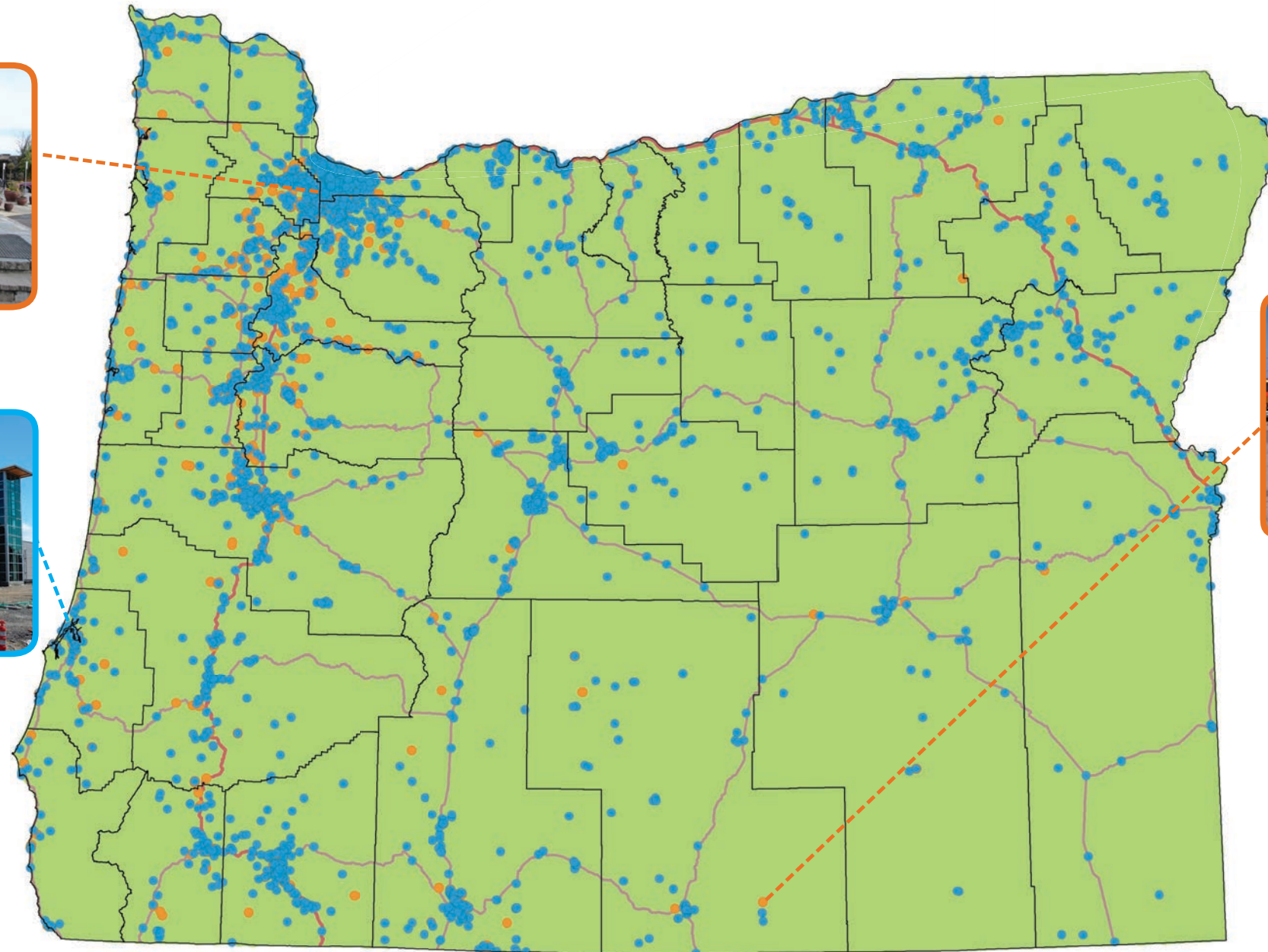
Only **35%** have been assessed or worked on to date.



54%
of brownfields are located in economically distressed counties

30
counties have received state assistance with more than one site

76%
are located within a community's urban growth boundary



currently there are roughly
450 active projects
in progress around the state

Oregon Brownfields Highlights 1988-Present



Map data source: Maul Foster and Alongi, 2014.



A STUDY OF OREGON BROWNFIELDS

Port of Newport International Terminal, Newport

AVAILABLE OREGON BROWNFIELDS RESOURCES STUDIED:

Business Oregon

- Brownfields Redevelopment Fund
- Brownfields Cleanup Fund

Department Environmental Quality

- Orphan Fund
- Site Specific Assessment Program
- Prospective Purchasers Agreement Program

Former Sunnybrook Hop Farm Grants Pass



In 2013, Business Oregon launched an effort to assess the various impacts of public investments in brownfield remediation in Oregon.

Overall Finding: State programs are critical for redevelopment.

The economic impacts analysis described the key short-and long-term economic impact findings for 92 study sites for which redevelopment information was compiled. The State of Oregon spent nearly \$19 million through brownfields programs on the analyzed sites. The return on this investment for Oregon's citizens and local governments is noteworthy and the continuing economic development outcomes significant.

Of note, redevelopment on brownfields has generated the following economic outcomes:

Oregon's residents, through job creation and associated earnings:

- \$470 million annual earnings through existing operations jobs.
- \$610 million in annual earnings for operations jobs on planned projects.
- \$532 million in total earnings through construction jobs on existing or planned projects.

Local governments, through property taxes and redevelopment:

- \$10.5 million in annual property tax revenue. The catalytic effect on nearby properties could increase this amount by 4.9% to 11.1%.
- \$600 million has been invested in redevelopment projects among the sites analyzed in this study, with another \$211 million underway and \$566 million planned.

State general fund, through income tax revenues:

- \$19.4 million annually through existing operations jobs.
- \$40 million total for construction jobs on existing or planned projects.



www.oregon4biz.com

Taking on the redevelopment of contaminated sites requires support and funding from many sources. State programs play an essential role in the process of making these contaminated sites useful and productive to the state and its communities again.