



February 7, 2015

Oregon Joint Committee on Ways & Means  
Natural Resources Subcommittee  
900 Court St. NE  
Salem, Oregon 97301

RE: The Economic Significance of the Oregon LiDAR Consortium to OREGON

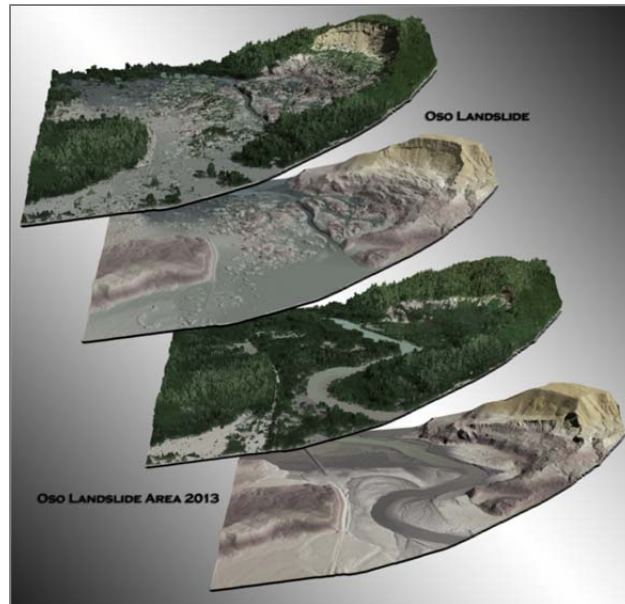
---

Dear Honorable Members of the OR Natural Resources Subcommittee,

Quantum Spatial, Inc. (QSI) is pleased to submit this written testimonial regarding the significant benefits granted to the State of Oregon by the Oregon LiDAR Consortium (OLC), a public remote sensing data acquisition and dissemination program administered by the Oregon Department of Geology and Mineral Industries (DOGAMI).

QSI (*formerly Watershed Sciences, Inc., Corvallis, OR*) is a growing remote sensing technology firm with offices in Corvallis and Portland. Our company is entering its 8<sup>th</sup> year of service providing quality LiDAR data to state, federal, NGOs, and private corporations through our data provider services contract with DOGAMI.

As a result of DOGAMI's leadership, the State of Oregon is recognized as a world-wide leader in cutting edge LiDAR data. These data have contributed significantly to the well-being of Oregon, both from an economic standpoint and with respect to providing valuable information resources for critical urban and rural decision making. The OLC's data directly contributes to geologic hazard assessment (e.g. risk of landslides, fault-line detection, and flood/tsunamis inundation modeling), forest fuels modeling (fire behavior, forest regeneration, and urban risk assessment in rural communities), wildlife habitat assessment (salmon, shorebirds, mule deer, and elk), evaluating energy and transportation infrastructure (locating wind farms, geothermal exploration, and upgrading transportation corridors), and a very long list of other applications.



### *Economic Benefits of the DOGAMI Program to Oregon*

QSI has benefited directly through the OLC program through job retention and growth. Contract funding from DOGAMI for the provision of Oregon LiDAR data feeds directly into the State's economy via *job creation and salaries to Oregonians* (and associated state tax revenue) and *direct expenditures* from the work that we do. Here's how:



- QSI employees 196 Oregon residents on salaried living wages with full health and retirement benefits. A large percentage of our Oregon staff (35-50%) work on OLC projects during the year and are retained by DOGAMI LiDAR project funding.
- In 2014, QSI spent at least \$2,756,000 within the State of Oregon on services and fees to support OLC-related staff salaries, and services, materials, and equipment related to LiDAR acquisitions (such as aircraft and vehicle fuel; aircraft maintenance; airport services; field crew support services such as food, lodging, ground transportation; computer software/hardware; technical equipment).
- In the conduct of these projects, a significant portion of OLC dollars are infused into local communities throughout the state for support services that are critical to the success of our work. In 2013-2014, most of the OLC work has occurred in the rural areas in the Oregon.

#### *Other Benefits to Oregon*

OLC funding imparts additional less direct but significant benefits to Oregon that are also economic, and/or related to productivity and advancement of our State. These include the following:

- Public access to exceptional LiDAR data at costs that would not be possible without the OLC structure. The OLC fee schedule provides significant cost savings to OLC clients and LiDAR consumers, thereby providing valuable critical data for reasonable cost, and enabling surplus dollars to circulate in the Oregon economy.
- By hiring local professionals with OLC dollars, QSI is able to retain Oregon's investment in education to benefit and advance innovation and technology within the State - 55% of QSI's 196 employees in Corvallis and Portland are products of Oregon's higher educational system (OSU, UO, PSU, George Fox University, OR Graduate Institute of Science & Technology, and Oregon Institute of Technology).
- OLC projects and datasets have fostered technological advancement and transfer of knowledge to the research community regarding LiDAR. Through our relationship with the OLC, QSI has actively contributed to educational outreach, information dissemination, and technology training within Oregon.

In summary, the DOGAMI program is a true success story that has significantly contributed to the safety and economic well-being of the citizens of Oregon. Since we have Oregon based offices, the dollars spent on this program are retained in Oregon through retention of staff and through the purchase of support services in communities throughout the State. QSI encourages the legislature to continue to provide full support of DOGMI and the OLC.

Sincerely,

Russell Faux  
Senior Vice President