



OREGON COMMUNITY COLLEGE OVERVIEW

FACTS, FIGURES, AND FUNDING FOR OREGON'S COMMUNITY COLLEGES

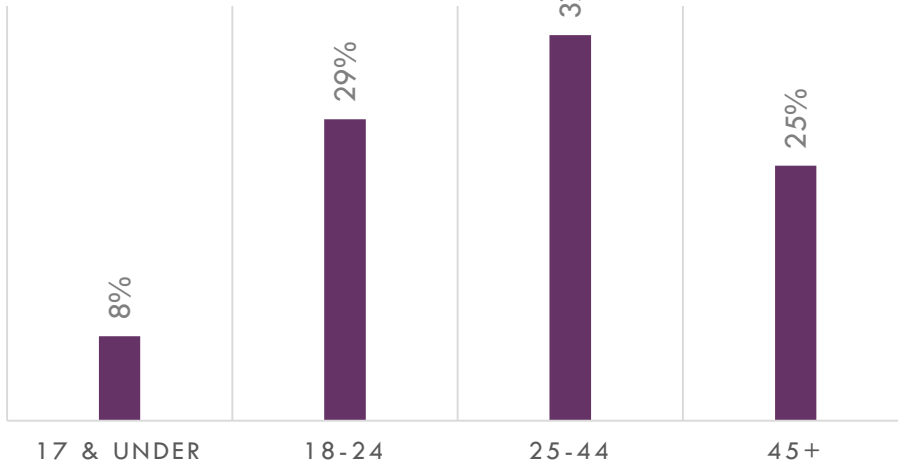


House Higher Education Committee
February 6, 2015

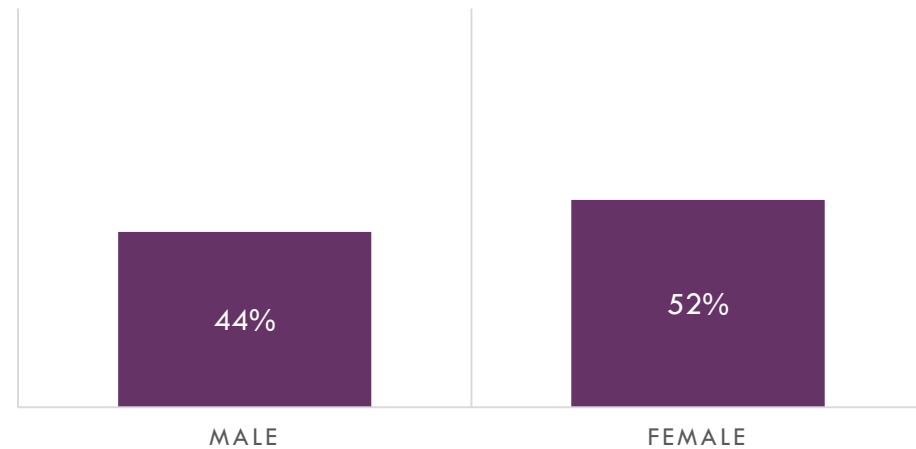
“The American Dream is at risk. Community colleges can help reclaim it. But stepping up to the challenge will require dramatic redesign of these institutions, their missions, and most critically, students’ educational experiences.”

Oregon's Community College Students

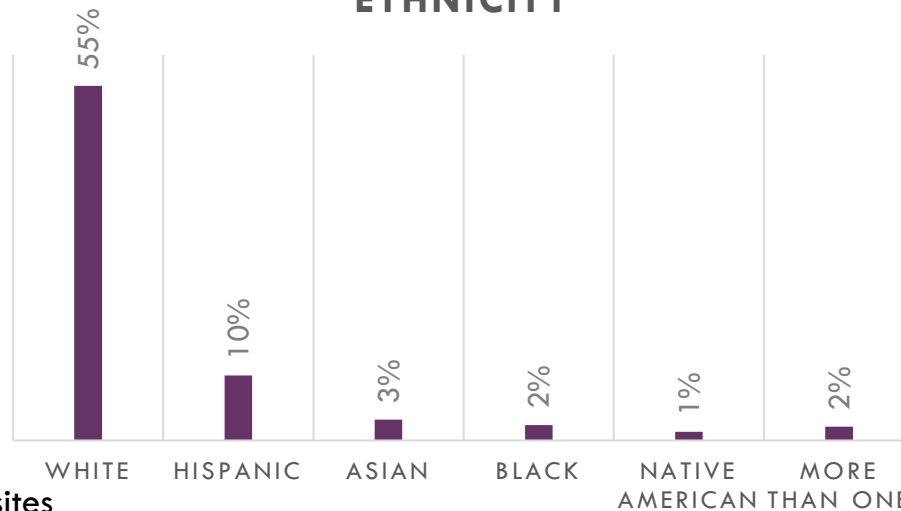
AGE



GENDER

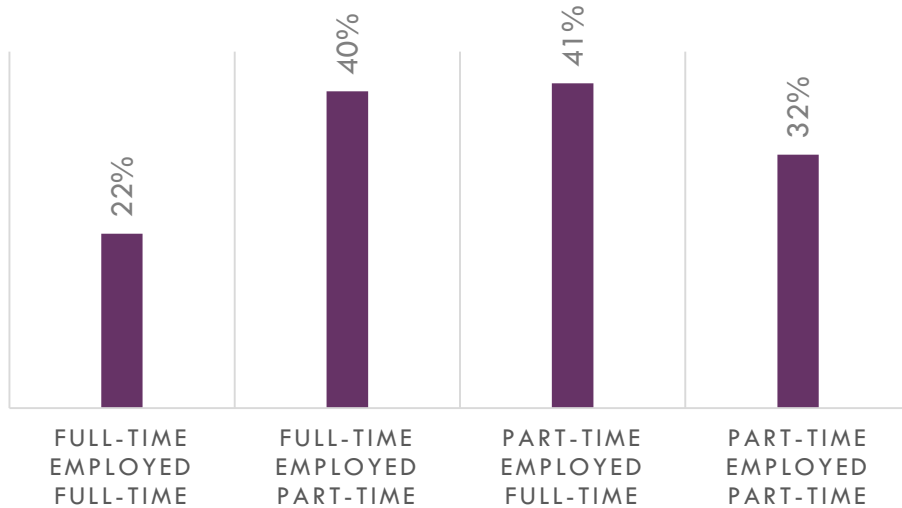


ETHNICITY

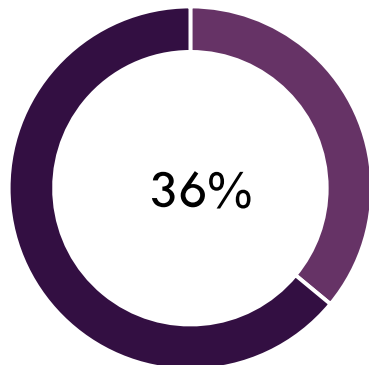
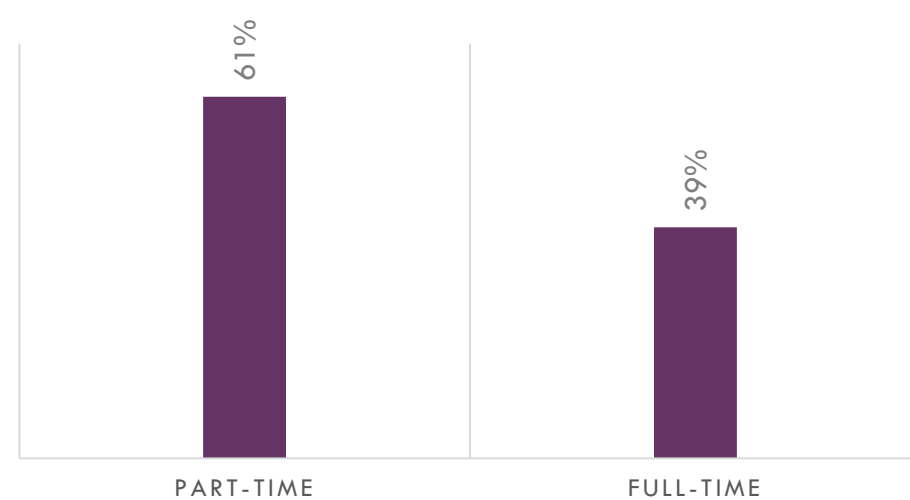


Community College Students Nationally

EMPLOYMENT STATUS

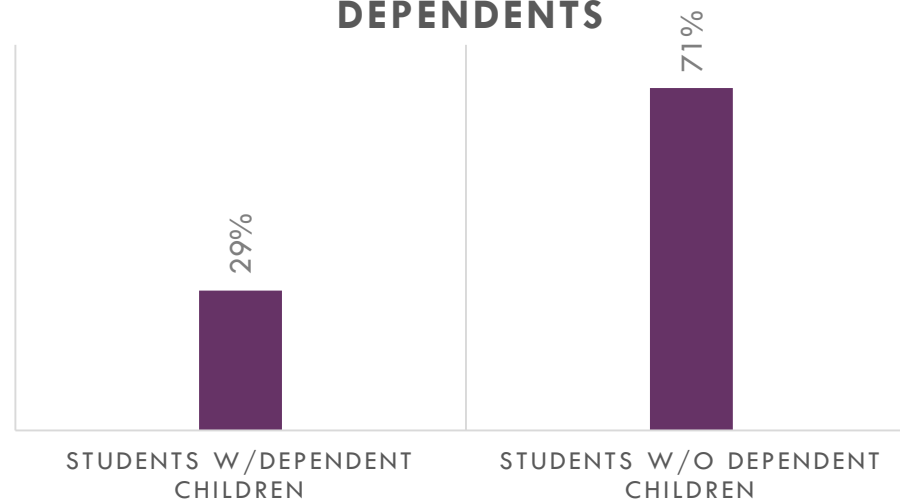


ENROLLMENT STATUS

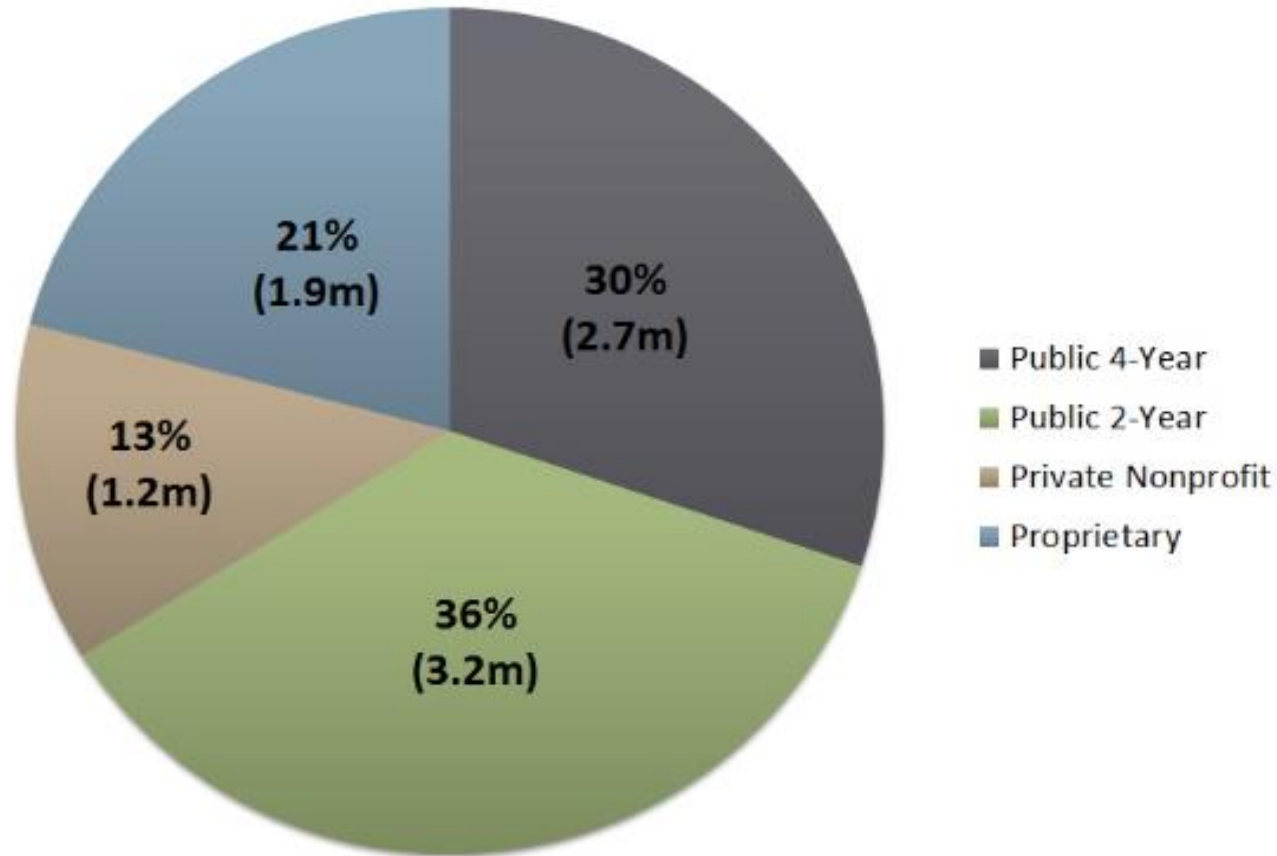


First Generation Students

DEPENDENTS



Pell Grant Recipients

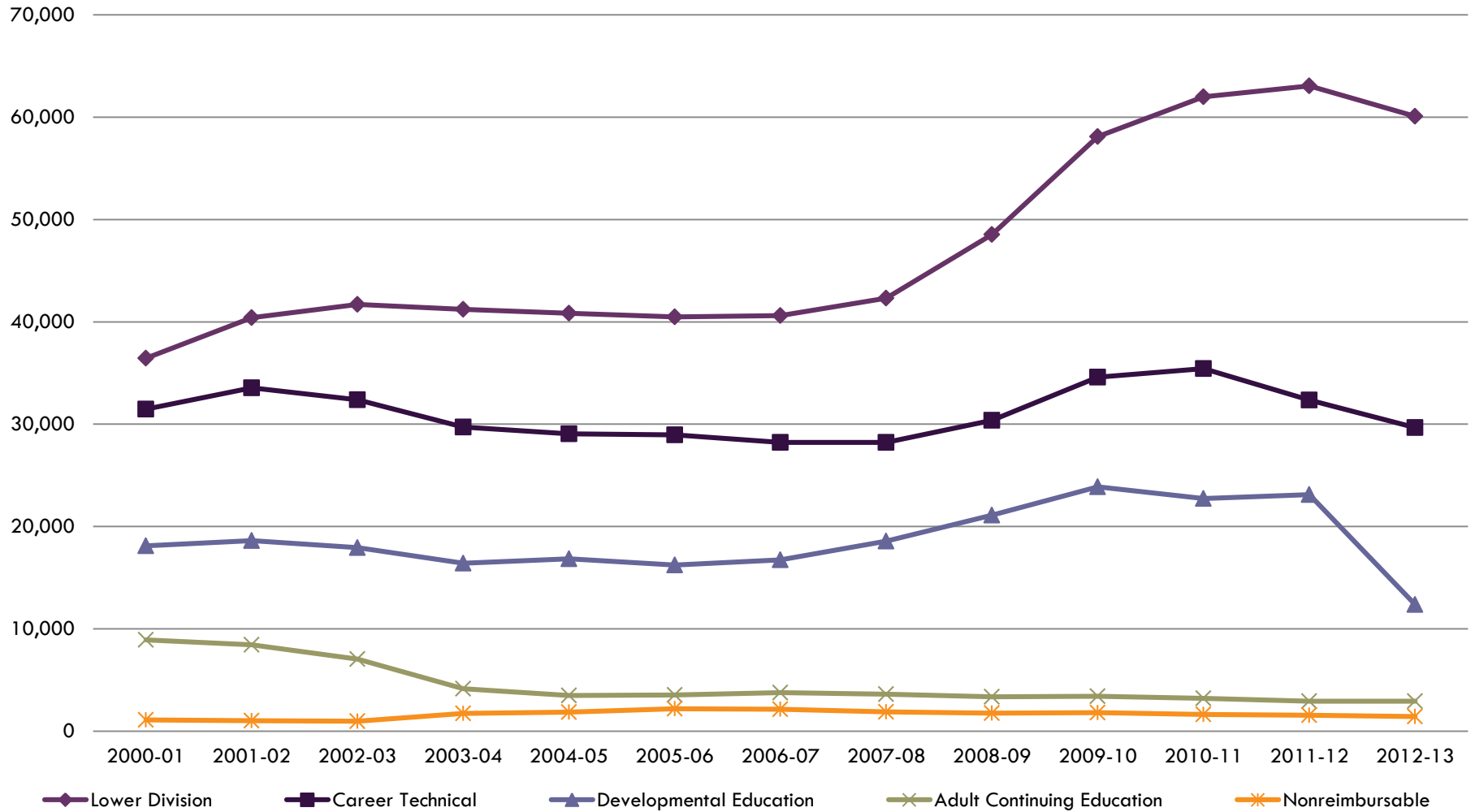


Source: U.S. Department of Education, Federal Pell Grant Program End-of-Year Report, 2012-2013.

Community colleges are open access institutions with a comprehensive mission



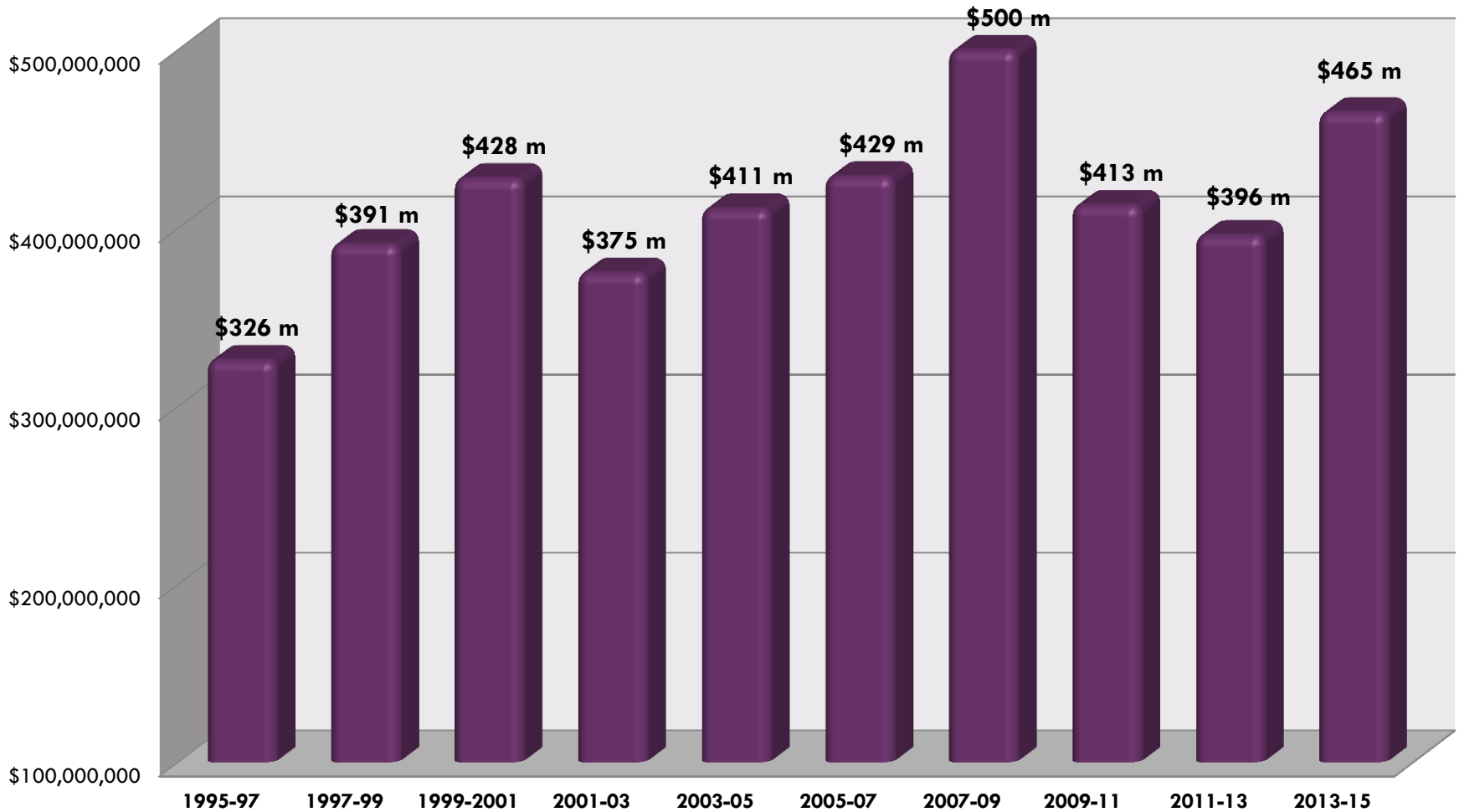
FTE by Program



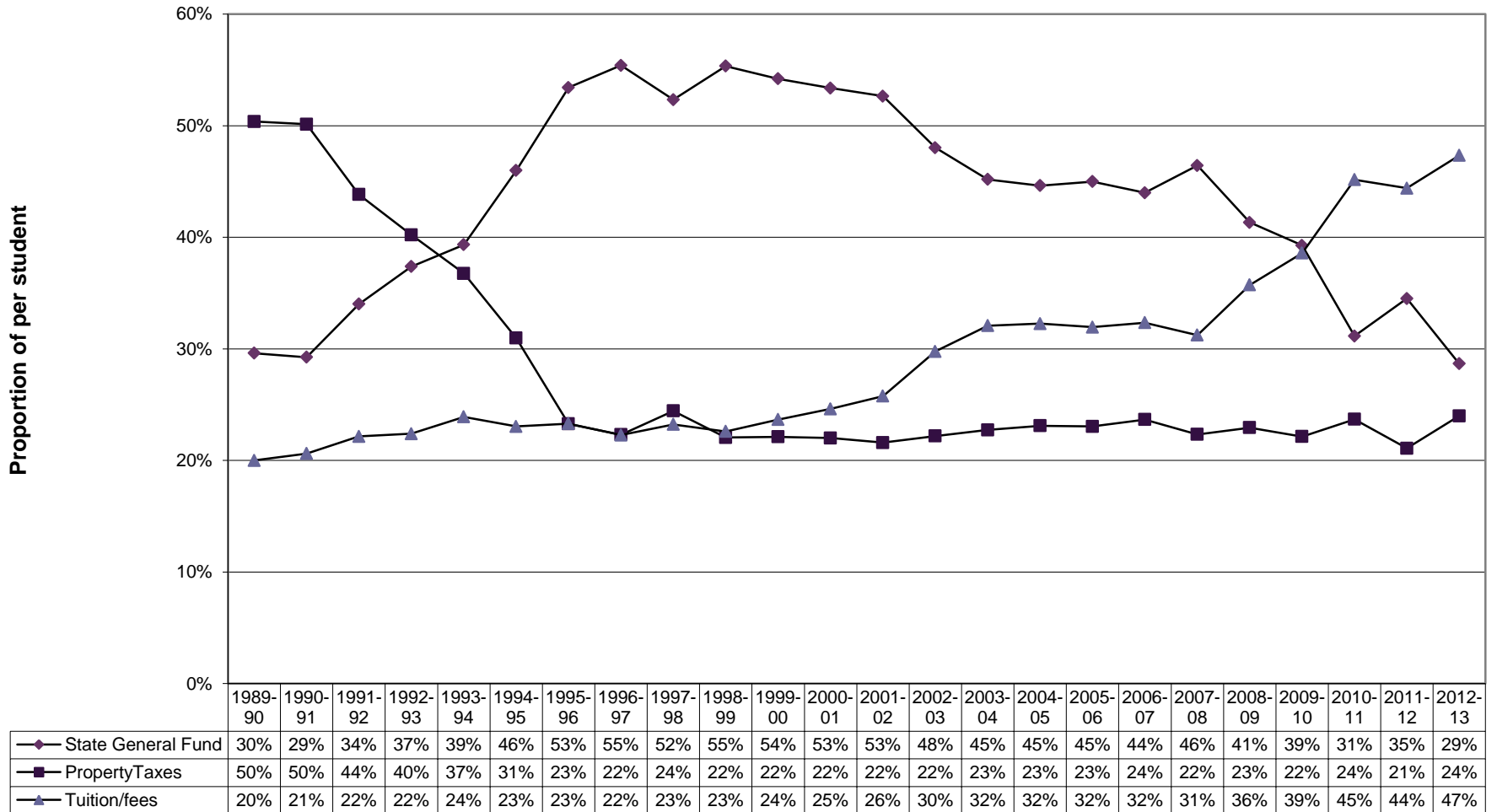
The High Cost of CTE Programs

- Nursing programs cost as much as \$28,722
- Medical Office Assistant programs costs as much as \$11,120
- Business Management programs cost as much as \$12,768
- Electronics Technician programs costs as much as \$15,374

State Appropriations to Community Colleges



Community College Revenue Sources (Tuition/Fees, Local Property Taxes, State General Fund)



Tuition and Fees

Average Resident Tuition and Fees - Oregon Community Colleges

	2003-04	2004-05	2005-06	2006-07	2007-08	2008-09	2009-10	2010-11	2011-12	2012-13	2013-14
Total	\$2,701	\$2,834	\$2,980	\$3,074	\$3,128	\$3,206	\$3,567	\$3,720	\$4,122	\$4,381	\$4,535

RESIDENT IN-DISTRICT/COUNTY TUITION AND FEES AT PUBLIC TWO-YEAR INSTITUTIONS IN THE WICHE REGION: STATE AVERAGES, 2013-14, 2012-13, 2008-09, AND 2003-04

Institution	Resident				2012-13 to 2013-14	2008-09 to 2013-14	2003-04 to 2013-14
	2013-14	2012-13	2008-09	2003-04			
ALASKA	\$4,690	\$4,570	\$3,790	\$2,418	2.6%	23.7%	94.0%
ARIZONA	2,355	2,226	1,881	1,305	5.8%	25.2%	80.5%
CALIFORNIA	1,104	1,104	600	540	0.0%	84.0%	104.4%
COLORADO	3,699	3,538	2,595	1,717	4.6%	42.6%	115.5%
COMM. NO. MARIANAS	3,350	3,350	3,350	2,240	0.0%	0.0%	49.6%
HAWAII	3,259	3,101	2,196	1,386	5.1%	48.4%	135.2%
IDAHO	2,876	2,711	2,071	1,619	6.1%	38.9%	77.7%
MONTANA	3,384	3,341	3,162	2,509	1.3%	7.0%	34.9%
NEVADA	2,700	2,700	1,920	1,537	0.0%	40.6%	75.7%
NEW MEXICO	1,572	1,506	1,171	908	4.4%	34.3%	73.1%
NORTH DAKOTA	4,086	3,977	3,779	2,503	2.7%	8.1%	63.2%
OREGON	4,535	4,381	3,206	2,701	3.5%	41.4%	67.9%
SOUTH DAKOTA	5,937	5,555	4,060	2,434	6.9%	46.2%	143.9%
UTAH	3,261	3,109	2,416	1,815	4.9%	35.0%	79.7%
WASHINGTON	4,274	4,235	2,947	2,263	0.9%	45.0%	88.8%
WYOMING	2,539	2,391	2,017	1,633	6.2%	25.9%	55.5%
AVERAGE	\$2,431	\$2,370	\$1,702	\$1,290	2.6%	42.8%	88.4%
AVERAGE WITHOUT CALIFORNIA	\$3,424	\$3,318	\$2,525	\$1,865	3.2%	35.6%	83.6%

Source: WICHE

Ratio of Tuition and Fees to Median Household Income,

Public Institutions, 2013-14, 2008-09, and 2003-04

State	Associate's Colleges			Baccalaureate/Master's			Doctoral Granting		
	2013-14	2008-09	2003-04	2013-14	2008-09	2003-04	2013-14	2008-09	2003-04
Alaska	7.7%	6.2%	4.0%	9.7%	7.6%	5.4%	9.8%	8.0%	6.3%
Arizona	4.7%	3.7%	2.6%	N/A	N/A	N/A	19.8%	11.0%	7.1%
California	2.4%	1.0%	0.9%	11.6%	6.7%	4.5%	21.9%	13.2%	9.0%
Colorado	5.8%	4.1%	2.7%	11.4%	7.1%	4.5%	16.6%	11.2%	6.6%
Hawaii	5.5%	5.5%	3.6%	10.5%	6.6%	3.7%	16.1%	10.2%	5.6%
Idaho	6.3%	4.2%	2.7%	11.7%	8.6%	6.2%	12.4%	9.0%	6.6%
Montana	6.5%	4.7%	3.7%	12.0%	10.7%	8.4%	14.5%	12.4%	9.3%
Nevada	7.5%	7.0%	5.5%	9.8%	6.4%	4.6%	14.5%	10.0%	5.9%
New Mexico	6.4%	4.6%	3.6%	10.9%	7.1%	5.2%	15.5%	11.4%	7.9%
North Dakota	3.0%	2.2%	1.7%	11.7%	10.2%	6.8%	14.2%	12.0%	7.7%
Oregon	7.3%	6.7%	4.4%	14.3%	10.9%	7.6%	15.4%	11.4%	8.1%
South Dakota	8.3%	5.9%	N/A	14.3%	11.1%	7.9%	14.4%	10.7%	7.8%
Utah	9.4%	6.4%	3.9%	8.1%	5.8%	3.8%	10.8%	7.7%	5.3%
Washington	5.4%	4.0%	3.0%	14.2%	9.1%	6.1%	20.4%	12.0%	8.1%
Wyoming	7.7%	5.3%	4.1%	N/A	N/A	N/A	7.9%	6.5%	5.5%

Source: WICHE

Default Rate By College

	FY2011	FY2010	FY2009
Blue Mountain CC	28.1%	24.2%	29.6%
Central Oregon CC	23.9%	26.3%	24.7%
Chemeketa CC	21.9%	22.7%	22.6%
Clackamas	18.7%	21.4%	15.3%
Clatsop CC	22.9%	26.8%	22.7%
Klamath CC	29.4%	33.0%	31.7%
Lane CC	30.2%	30.6%	19.5%
Linn-Benton CC	20.0%	20.2%	20.0%
Mt. Hood CC	22.0%	24.0%	20.7%
Portland CC	16.5%	20.3%	18.5%
Rogue CC	24.6%	29.2%	26.0%
Southwestern Oregon CC	16.5%	21.2%	30.7%
Tillamook Bay CC	16.5%	20.3%	18.5%
Treasure Valley CC	32.2%	26.6%	16.3%
Umpqua CC	35.9%	38.5%	24.3%

Source: Department of Education, Federal Student Aid



The BIG BUSINESS of TEXTBOOKS

800%

Rise in textbook
costs over the
past 30 years

65%

Students who have
opted not to buy a
required textbook
due to cost

\$1,200

What the average
college student
spends per year on
books and supplies

\$4.3 billion

Total earnings on higher education course materi-
als from 1,200 publishers surveyed

*SOURCES: College Board, U.S. PIRG
Education Fund, Student PIRGs,
Association of American Publishers*

(Article): University Business: College textbook forecast: Radical change
ahead

There is a direct relationship between textbook costs and student success

60%+ do not purchase textbooks at some point due to cost



50% take fewer courses due to textbook cost



31% choose not to register for a course due to textbook cost



23% regularly go without textbooks due to cost



14% have dropped a course due to textbook cost



10% have withdrawn from a course due to textbook cost



Source: 2012 student survey by Florida Virtual Campus

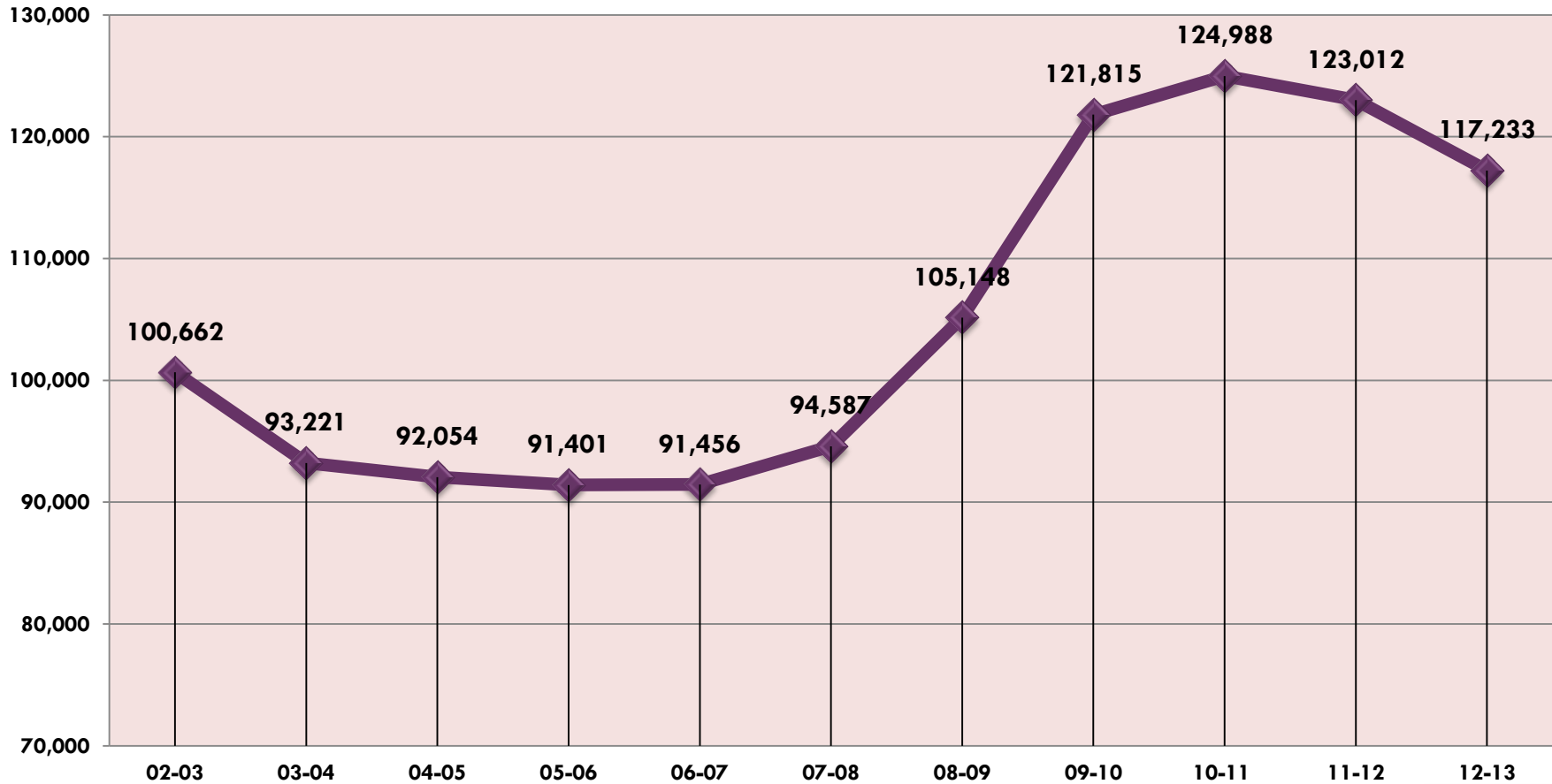
www.projectkaleidoscope.org

Open Educational Resources

- OERs are teaching, learning, and research materials in any medium that reside in the public domain or have been released under an open license that permits their free use and re-purposing by others



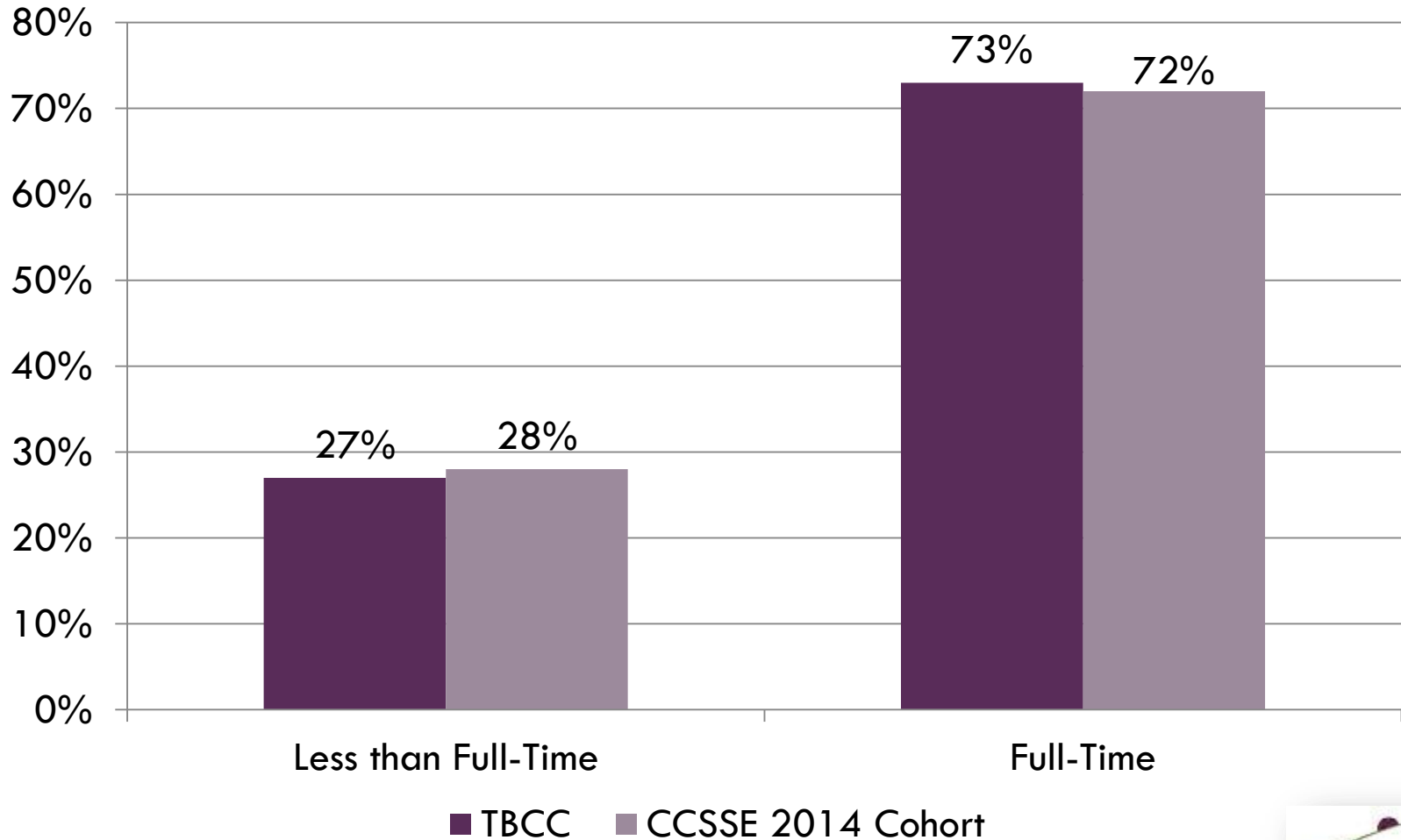
Full-Time and Part-Time Enrollments - FTE



Completion

"A central problem is that two-year colleges are asked to educate those students with the greatest needs, using the least funds, and in increasingly separate and unequal institutions. Our higher education system, like the larger society, is growing more and more unequal. We need radical innovations that redesign institutions and provide necessary funding tied to performance."

Student Respondent Profile: Enrollment Status (n = 143)



Source: 2014 CCSSE data

Student Aspirations

Students' Goals

Indicate which of the following are your reasons/goals for attending this college.

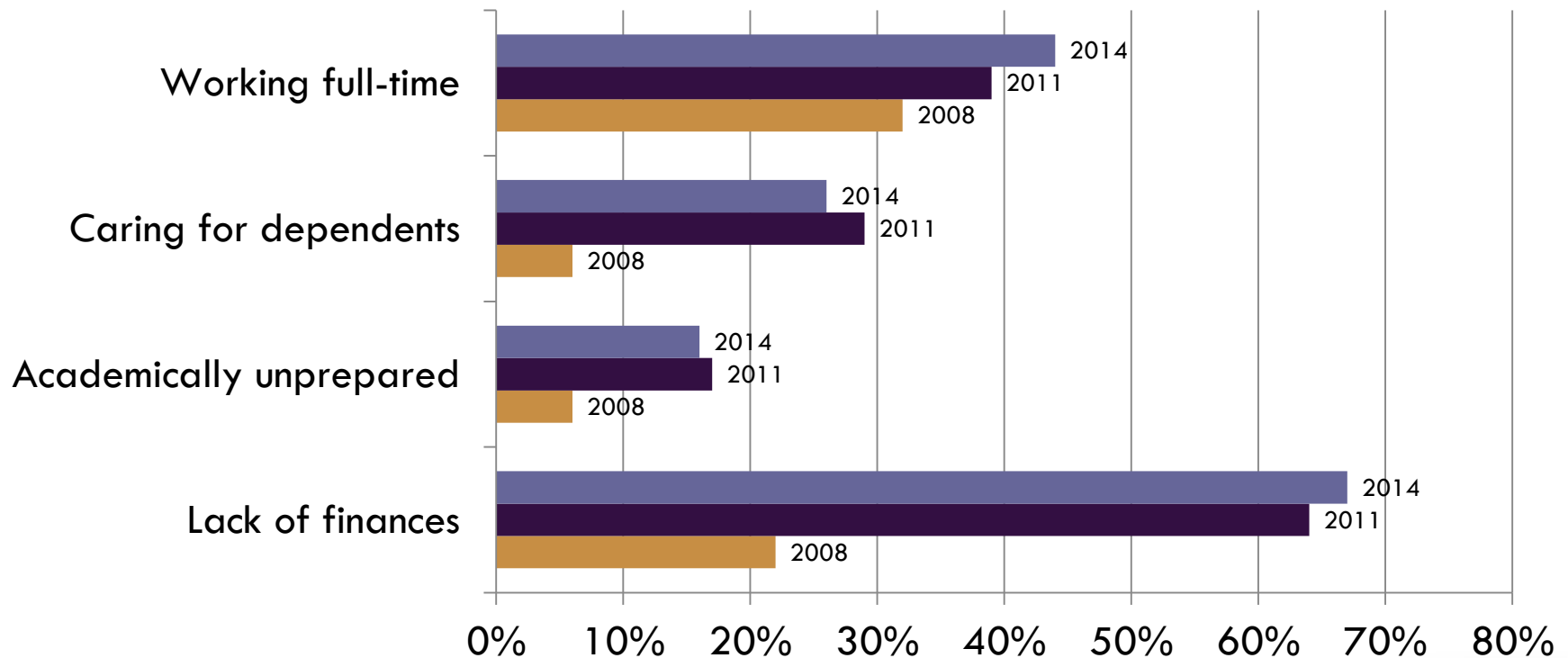
Primary Goal	2008	2011	2014
Complete a certificate program	11%	28%	29%
Obtain an associate degree	35%	71%	63%
Transfer to a four-year college or university	44%	49%	37%
Obtain or update job-related skills	33%	35%	42%
Self-improvement/personal enjoyment	40%	40%	44%
Change careers	28%	39%	44%

Note: Respondents may indicate more than one goal.

Student Persistence

Barriers to Returning to College

How likely is it that the following issues would cause you to withdraw from class or from this college?
Likely to Very Likely Results

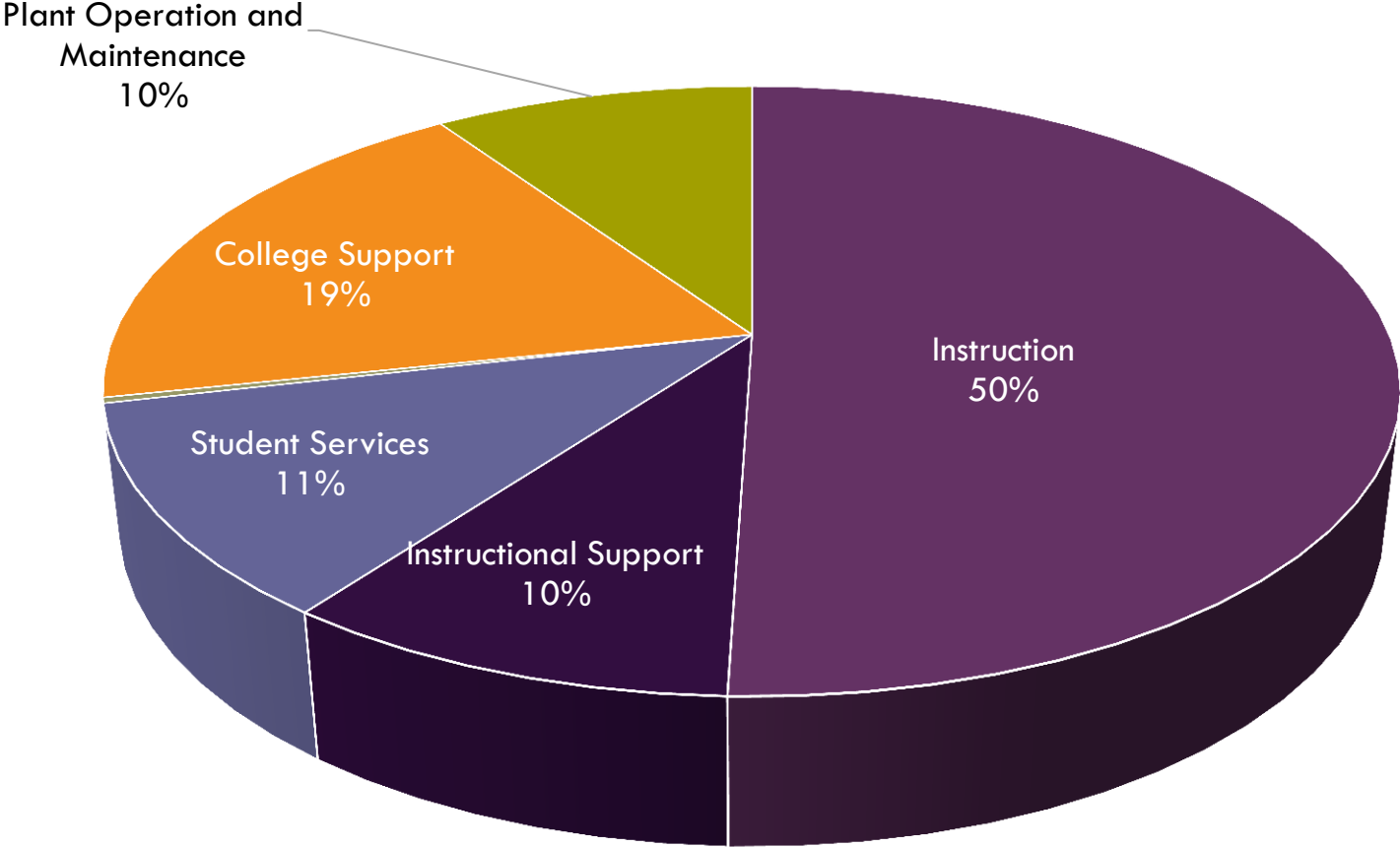


Source: 2014 CCSSE data

State Support Per Student FTE



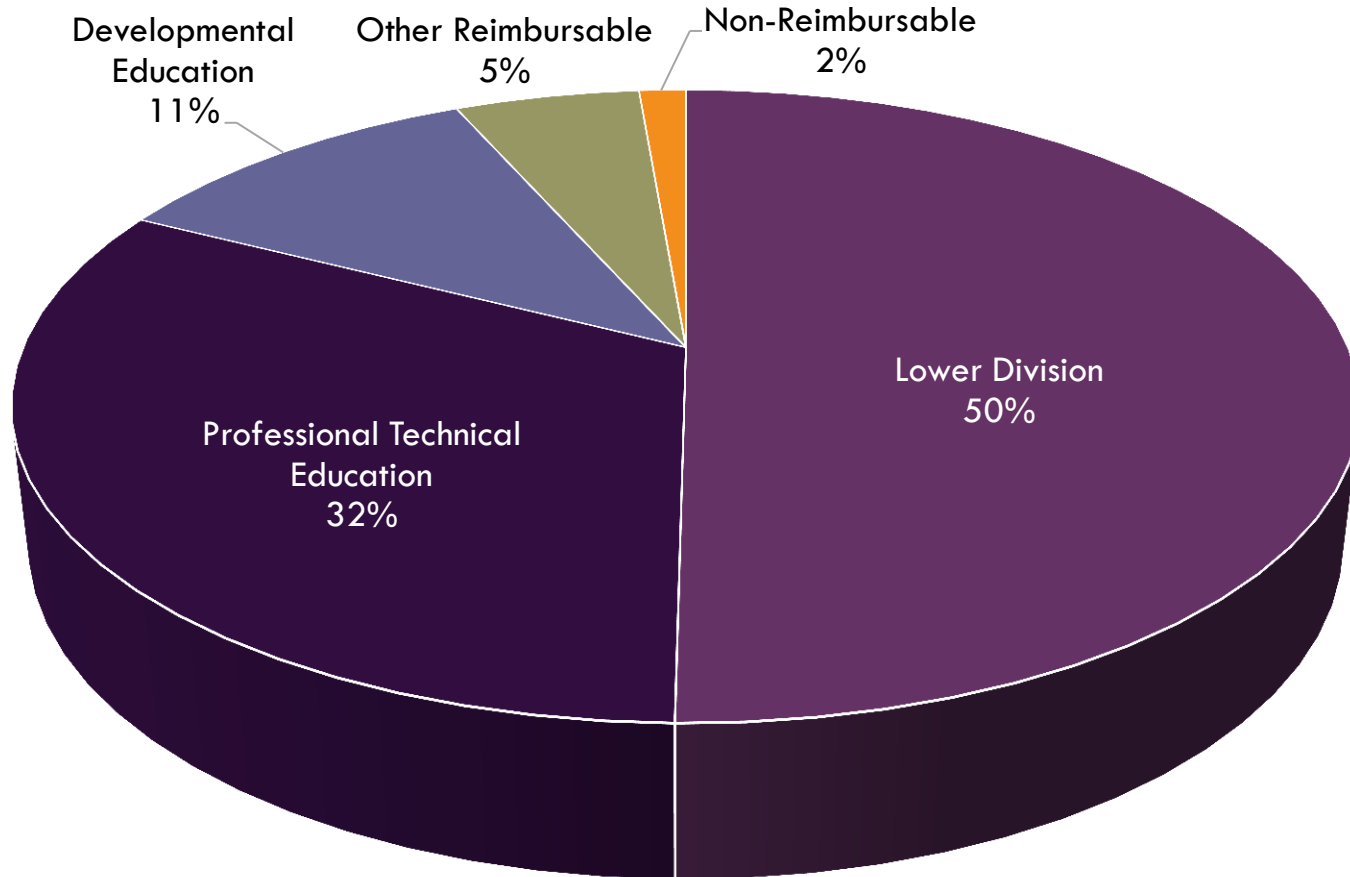
Expenditures by Category 2012-13



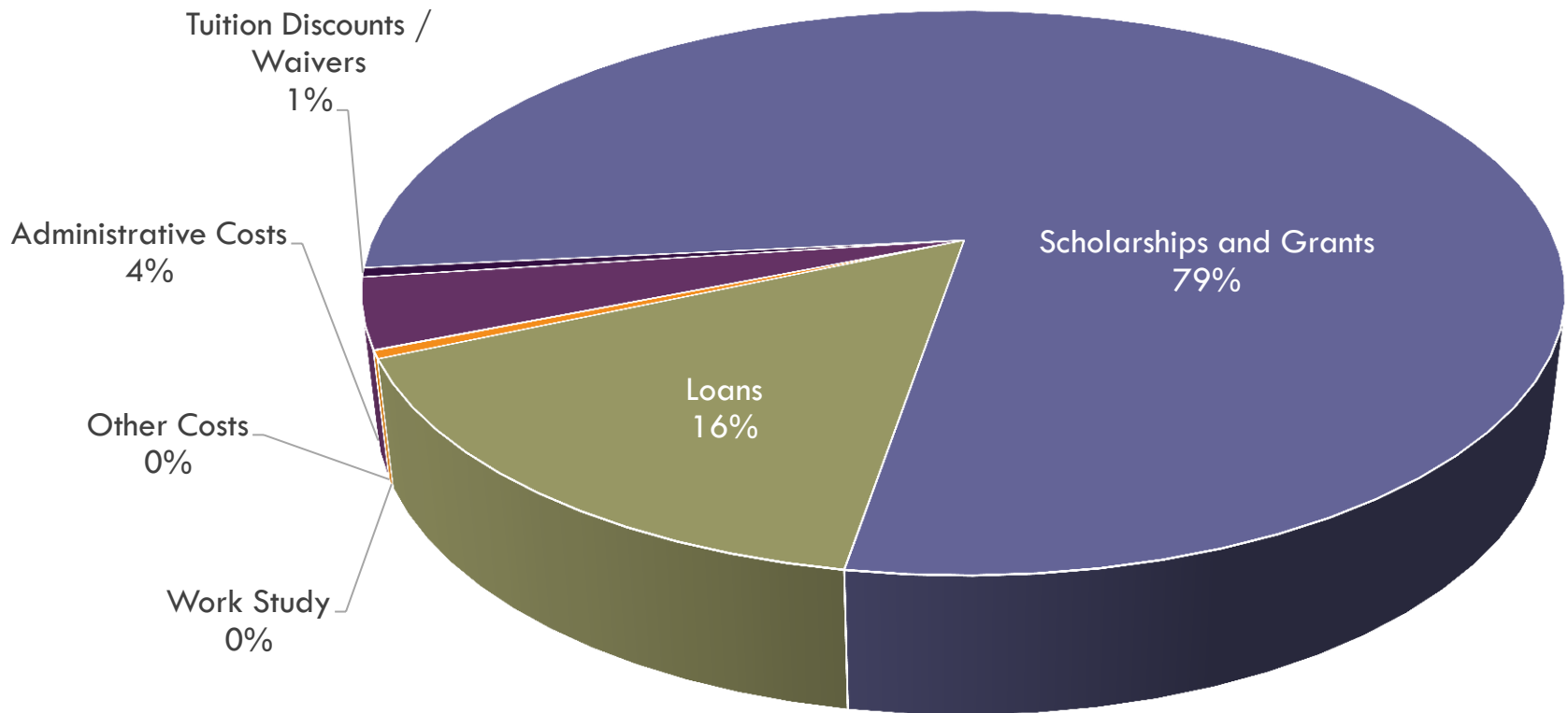
Source: CCWD



Instructional Costs – All Funds 2010-11

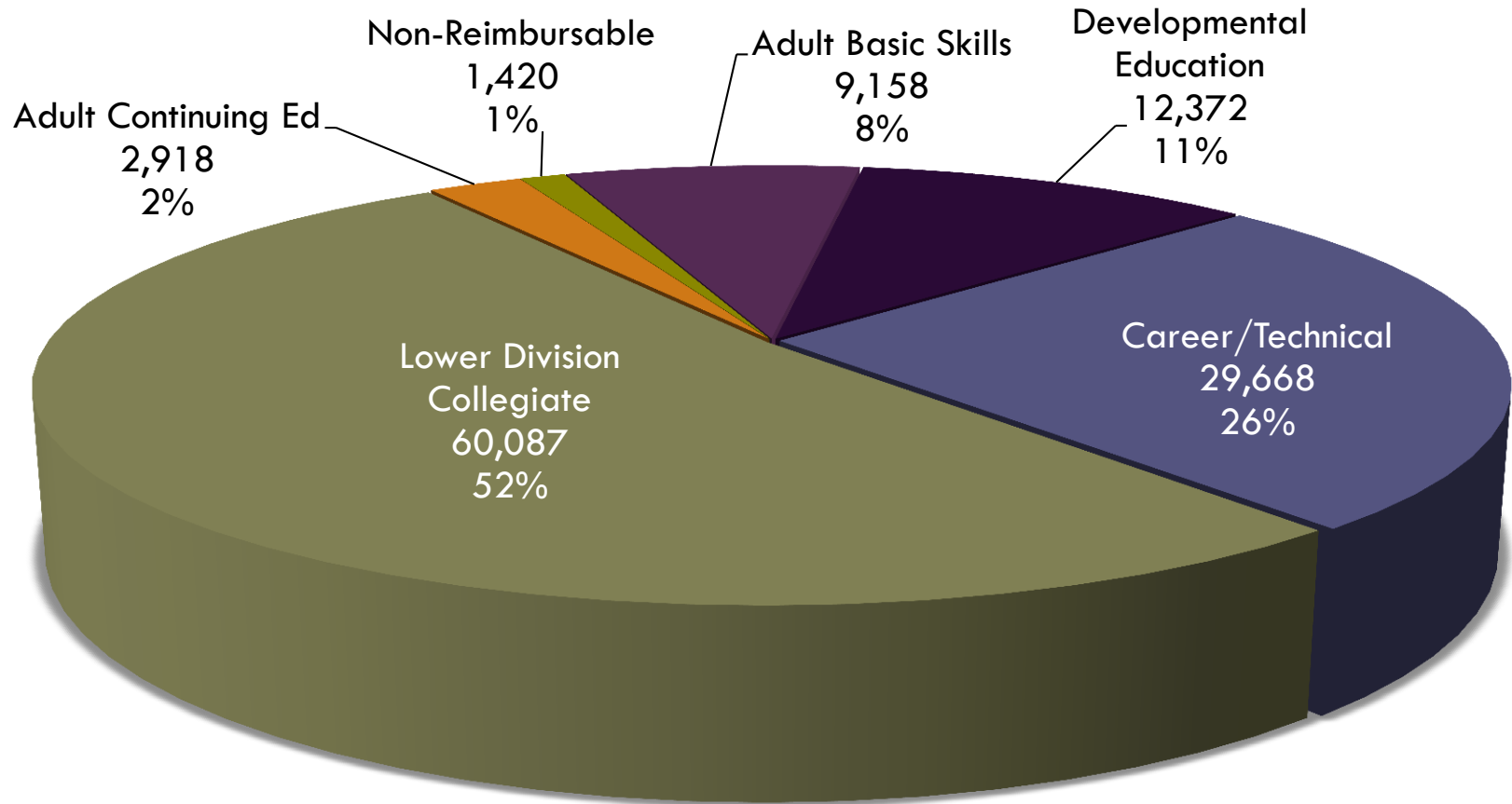


Financial Aid Expenditures 2012-13

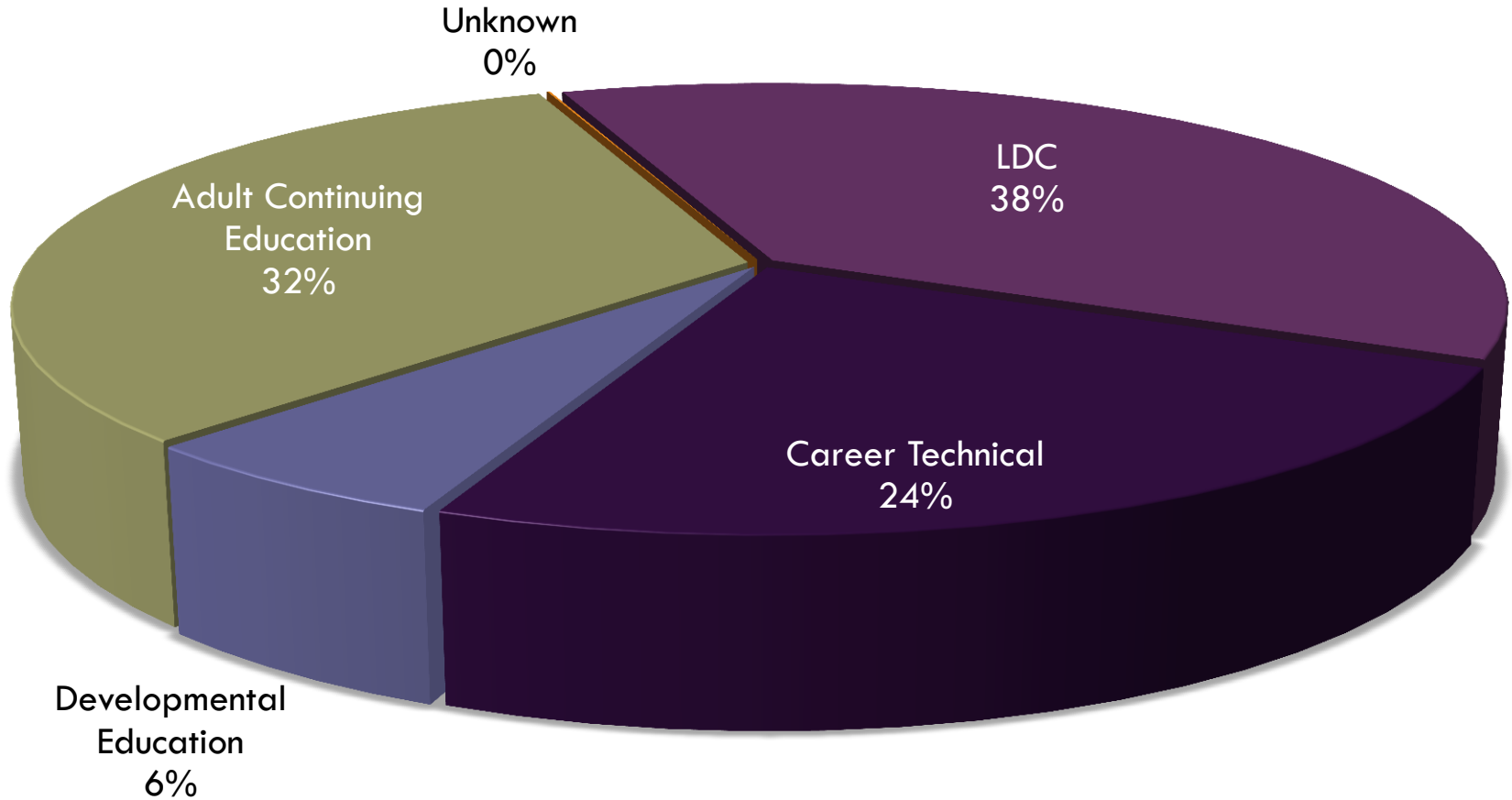


Source: CCWD

Student FTE by Program Area 2012-13

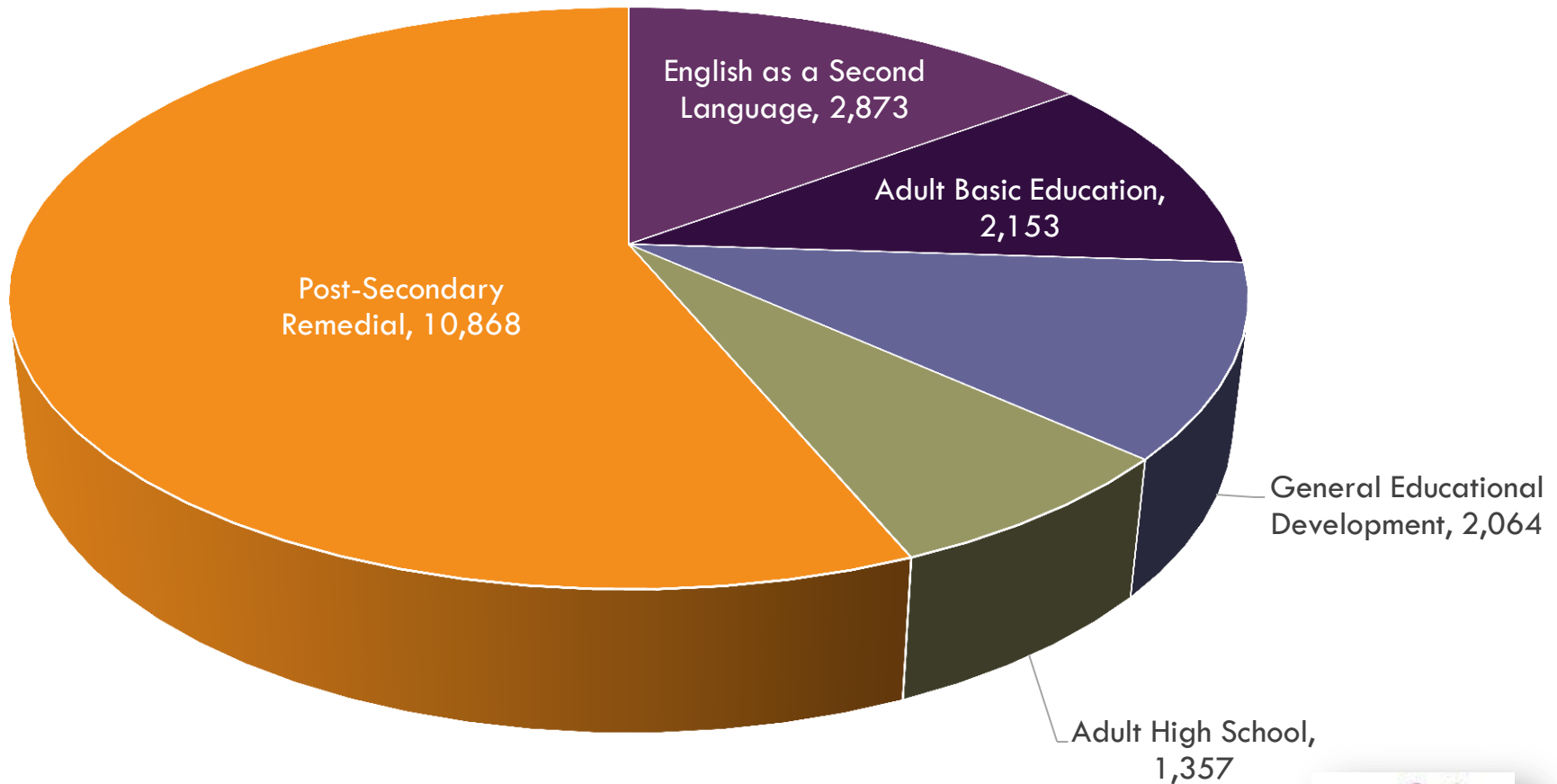


Student Headcount by Program Area 2012-13



Source: CCWD

Developmental Education Total FTE 2013-2014



Source: CCWD





Andrea Henderson, Executive Director
Oregon Community College Association
andrea@occa17.com | (503) 399-9912

Connie Green, President
Tillamook Bay Community College
conniegreen@tillamookbaycc.edu | (503) 842-8222

occa@occa17.com



<http://www.occa17.com>