



Agency Overview

House Committee on Energy and Environment
February 5, 2015

Michael Kaplan, Director

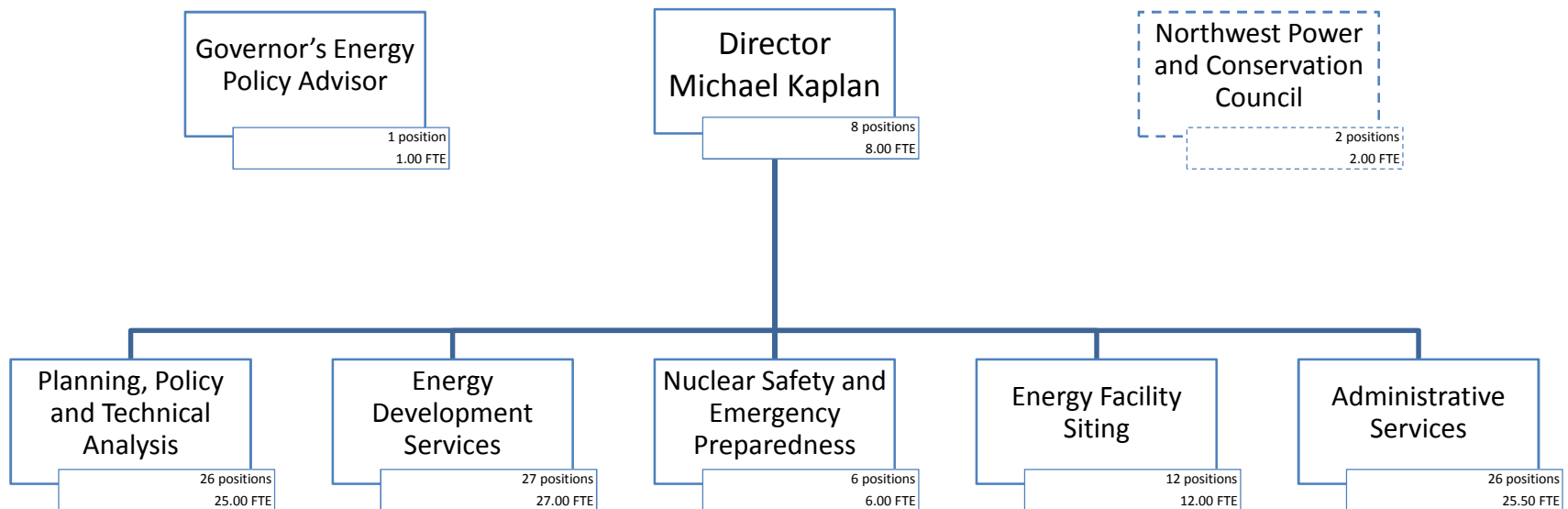


Oregon Department of Energy

Established by the Oregon Legislature in 1975

“It is the goal of Oregon to promote the efficient use of energy resources and to develop permanently sustainable energy resources.” - ORS 469-010

40 years later, ODOE has just over 100 employees across five divisions.



ODOE Budget

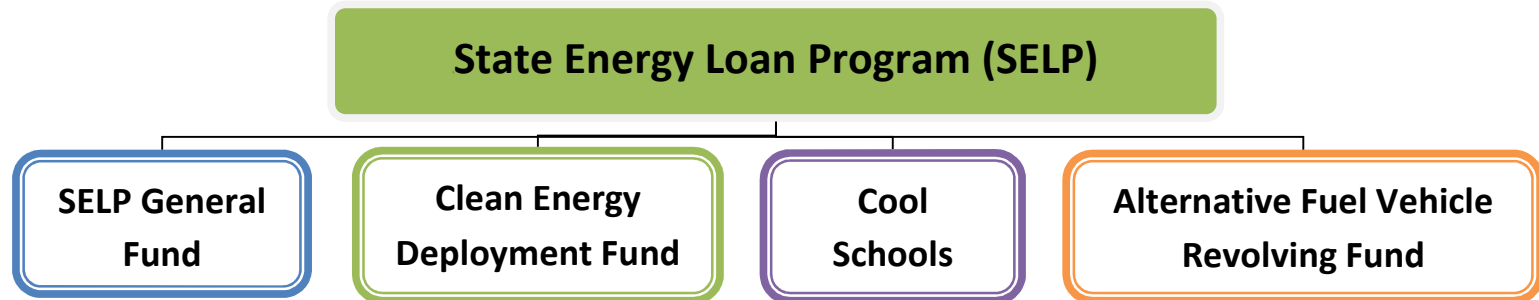
Biennium	Positions	Limited	Non-Limited	Total Funds
2009-11	122 (117 FTE)	\$91,636,830	\$217,916,816	\$309,553,646
2011-13	130 (119 FTE)	\$75,450,526	\$171,915,240	\$247,365,766
2013-15	114 (112 FTE)	\$55,632,813	\$176,058,807	\$231,691,620
2015-17 (GB)	108 (106 FTE)	\$54,812,814	\$140,944,333	\$195,757,147

Encouraging Investment in Conservation, Efficiency, and Renewables

- Loans and incentives such as grants and tax credits to Oregon consumers, businesses, and governments.
- Programs support energy efficiency, renewable energy generation, and conservation.
- Loan borrowers undergo technical and business reviews. Incentives programs include caps and may include performance agreements.
- Due diligence includes site visits and inspections.

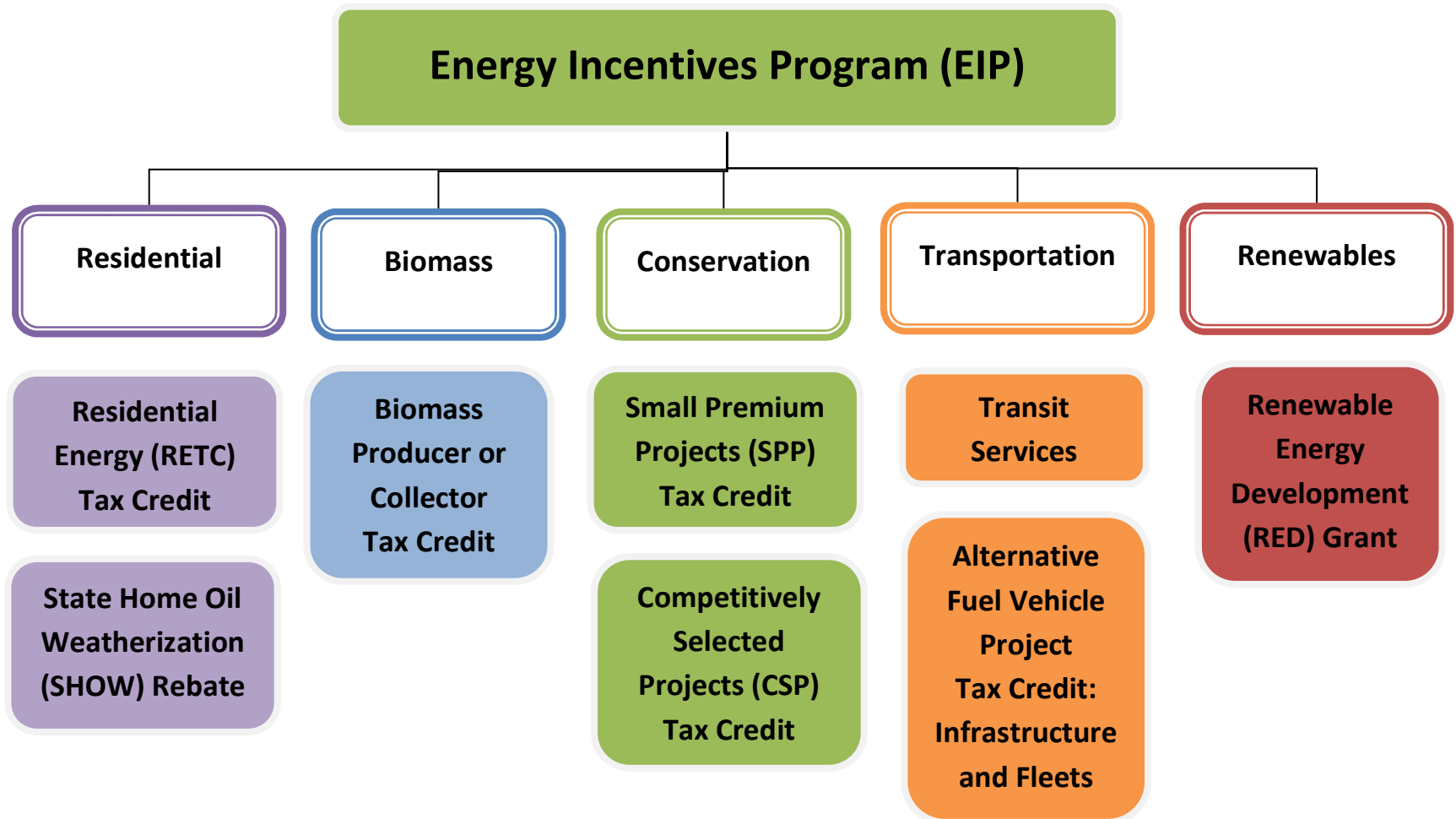


Encouraging Investment in Conservation, Efficiency, and Renewables



- Program offers loans for projects that:
 - Conserve natural gas, electricity and oil
 - Produce energy from renewable resources such as water, wind, geothermal, solar, biomass, waste materials or waste heat
 - Use recycled materials to create products
 - Promote use of alternate fuels
 - Acquire or convert vehicles to alternative fuels

Encouraging Investment in Conservation, Efficiency, and Renewables



Energy Development Services Division

ODOE Energy Incentives Program

Opportunity	Distribution Method	Funding Available
Conservation – Small Premium Projects under \$20k in project cost, prescriptive	First in, first out	\$28 million each biennium
Conservation – Commercial Buildings	Competitive	
Conservation – Commercial, Agricultural and Industrial Processes		
Conservation – Thermal		
Conservation – Combined Heat and Power (CHP-CoGen)		
Transportation – Transit Services	Allocation formula of credits among projects	\$20 million each biennium
Transportation – Alternative Fuel Vehicle Projects: Infrastructure and Fleets (Fleets eligible beginning January 2015)	First in, first out	
Renewable Energy Development Grants	Competitive	Amount depends on auction; capped at \$3 million per biennium
Residential Energy Tax Credit	Rolling	Uncapped, except third-party solar limited to \$10 million in reservations
State Home Weatherization Rebate	Rolling	Up to \$400,000 per year, based on petroleum supplier assessment
Biomass Producer or Collector Tax Credit	Rolling	Uncapped

Helping Oregonians Save Energy and Money

Residential Energy Tax Credits

- Help homeowners while promoting energy conservation and renewable energy development
- 570,000 tax credits issued
- \$172 million saved
- Energy savings enough to power more than 400,000 households for one year

High efficiency gas furnaces

Gas water heaters

Electric heat pump water heaters

Premium wood and pellet stoves

Ducted and ductless heat pumps

Geothermal heating systems

Duct sealing

Direct vent gas fireplaces

Solar water heating

Alternative fuel charging stations

Solar photovoltaic systems

Wind systems



Helping Oregonians Save Energy and Money

State Home Oil Weatherization

- Helps households that heat with oil, propane, kerosene, butane or wood with rebates for weatherization and heating measures
- Program funding from petroleum supplier companies doing business in Oregon



Eligible homeowners can conduct energy audit and apply for reimbursement up to \$500.

Households eligible for the U.S. Department of Energy's Low Income Weatherization Program can apply through community action agencies for rebates up to \$2,500.

Helping Oregon Schools Save Energy and Money

Schools Programs

- ODOE technical staff help schools across the state evaluate and pursue energy efficiency measures
- Offerings include grants, low-interest loans, and technical and business assistance



Promoting Renewable Energy

Evergreen BioPower



Lochmead Dairy

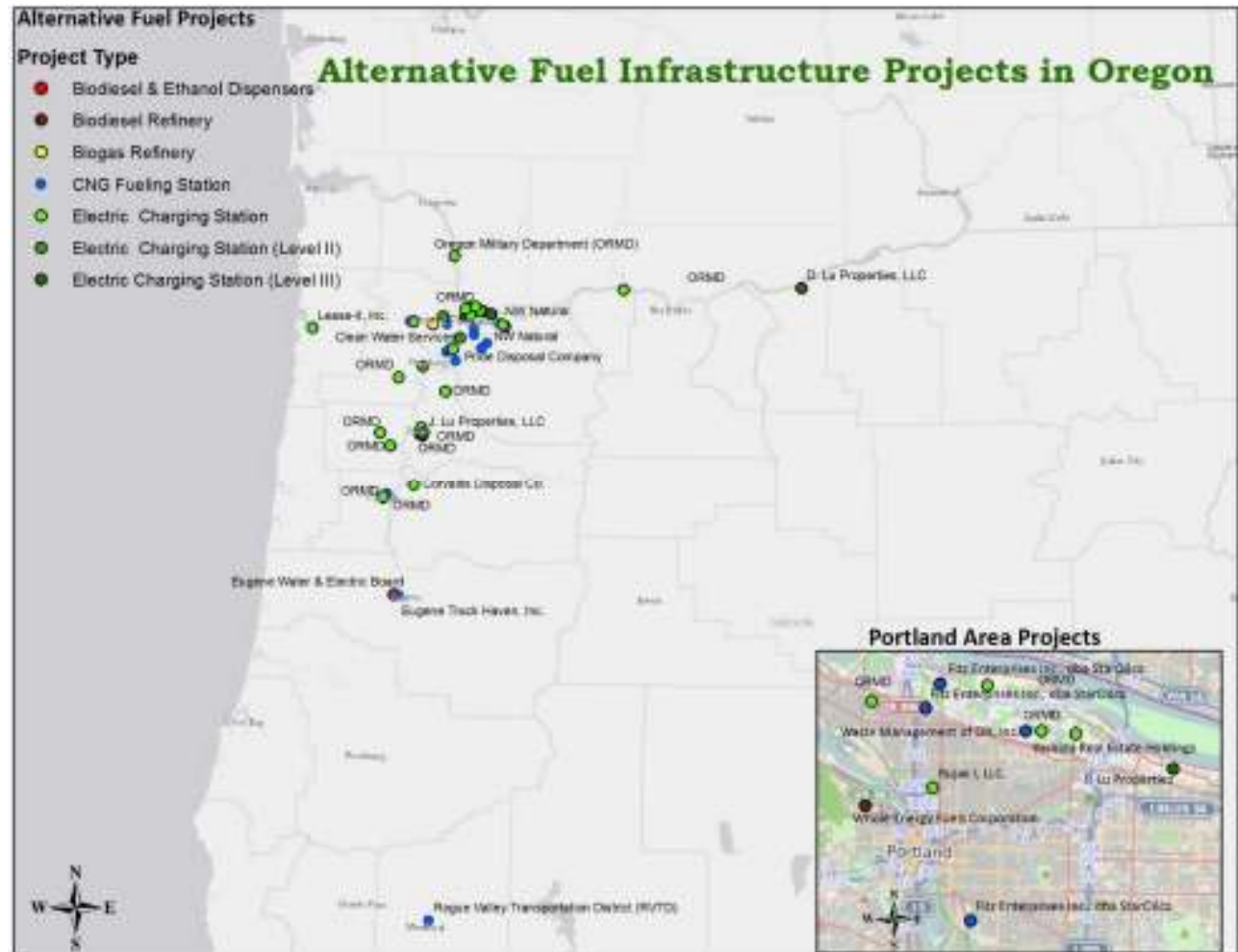


Biomass Producer or Collector Tax Credit

- Production, collection and transportation of biomass used for energy production
- Offset biomass production, collection and transportation costs

Supporting Alternative Vehicle Use

- Mix of financial support and policy expertise
- Financial incentives capped at \$20 million per biennium
- Beginning in 2015, support for alternative fuel vehicle fleets



Providing Leadership, Expertise on Oregon's Energy Resources

- Governor's 10-Year Energy Action Plan
- Renewable Portfolio Standard
- Alternative fuel vehicles
- Fleet conversions
- Resource planning
- Federal rules on carbon emissions
- Off-shore wind
- Solar energy
- Energy efficiency upgrades and retrofits
- Energy storage
- Home performance



Providing Energy Expertise to State Agencies

State Energy Efficiency Design

- ODOE provides resources to ensure new/remodeled state buildings meet criteria for energy efficiency
- Goal: 20% overall reduction in energy use for state agencies by 2015 – met two years ahead of schedule
- State agencies will save almost \$1.4M this year in energy costs

State Building Innovation Lab

- ODOE focus for 2015 is benchmarking state building energy use
- Goal is 20% reduction in energy use at ALL state-owned buildings by 2023



Providing Expertise in Energy Facility Siting

Energy Facility Siting Council

- Makes siting decisions for large energy facilities
- ODOE serves as staff to Council
- EFSC meets regularly
- Numerous public involvement opportunities

Applications currently under review for Site Certificate:

- Baseline Wind, Gilliam County, 500 MW wind
- Boardman to Hemingway, 298-mile, 500 kV transmission line
- Brush Canyon Wind Facility, Wasco and Sherman counties, 535 MW wind
- Heppner Wind Energy Facility, Morrow County, 500 MW wind
- Perennial Wind Chaser Station, Umatilla County, 400 MW natural gas
- Saddle Butte Wind Park, Gilliam and Morrow counties, 399 MW wind
- South Dunes Power Plant, Coos County, 420 MW natural gas
- Troutdale Energy Center, Multnomah County, 653 MW natural gas
- Wheatridge Wind Energy Facility, Morrow and Umatilla counties, 500 MW wind

Providing Expertise in Energy Facility Siting

- ODOE is responsible for collecting state agency comments on Jordan Cove Draft Environmental Impact Statement
- ODOE is ensuring the Boardman to Hemingway transmission line environmental review meets state standards and processes



Protecting Oregon from Radioactive Materials

Hanford Cleanup

- ODOE actively helps ensure cleanup decisions are protective of Oregon and the Columbia River
- ODOE staffs the Oregon Hanford Cleanup Board

Nuclear Waste Transportation

- ODOE oversees program and delivers annual report to Legislature on transportation of nuclear materials on Oregon roadways



Preparing for Emergencies

- Nuclear Emergency Preparedness
- Oregon's Petroleum Contingency Plan
- Energy Assurance
- LNG Emergency Response Planning



ODOE Priorities

- Rigorous fiscal management
- New staff
- Rewriting ODOE mission statement
- Governor's 10-Year Energy Action Plan
- Due diligence and improving processes
- Strengthening Small-scale Energy Loan Program