



OREGON DEPARTMENT OF EDUCATION

February 3, 2015

Rob Saxton
Deputy Superintendent of Public Instruction



DEPARTMENT OF
EDUCATION

Agency's Mission Statement

The Oregon Department of Education fosters excellence for every learner through innovation, collaboration, leadership, and service to our education partners.



ODE's Strategic Plan Has Five Major Long-term Goals

Learners

Every student graduates from high school and is ready for college, career, and civic life.

Educators

Every P-12 organization is led by an effective administrator, and every student is taught by an effective teacher.

Schools & Districts

Increase performance for all schools and districts in order to create systems of excellence across the state.

Communities

ODE meaningfully engages parents, stakeholders, and the larger community to help make Oregon's schools the best in the country.

ODE

Make ODE the best place to work.

Our Customers

The PK-12 system including:

- 197 school districts
- 1,266 schools
- 19 education service districts
- Other local service providers such as Oregon Prekindergarten programs
- Approximately 70,000 teachers, administrators and other local employees
- Approximately 600,000 students in P-12
- Plus stakeholders such as business community partners, education advocacy groups, the Legislature, other state agencies and the general public



ODE Responsibilities in Brief:

- Early Learning Division
- Youth Development Division
- Finance: Distribute State School Funds and Strategic Investment funds to 197 school districts and 19 ESDs; distribute & monitor use of federal funds; apply for public & private grants and distribute
- Academic Standards & Assessments: With State Board of Education, determine what students should know by grade level and measure that knowledge through a statewide assessment
- Improving Teaching: Teacher mentorship, technical assistance, school improvement; data analysis
- Data Collection/Reporting: Collect district, school, and student-level data; report school, district and student performance through the Oregon Report Card
- Accountability: Adopt and enforce rules for the governance of P-12 schools; ensure students with disabilities are served as required under state and federal laws; help districts comply with federal law through monitoring and technical assistance; ensure school buses are safe and drivers are trained
- Educate: Operate the Oregon School for the Deaf; oversee education for students in youth correctional facilities, long-term care and treatment programs, hospital settings, regional and early childhood programs



Major ODE Programs: About 96% of ODE's Total Budget

Programs and Services

- State School Fund
- Youth Correction/Juvenile Detention
- Early Intervention/Early Childhood Special Education
- State and Federal Special Education Programs

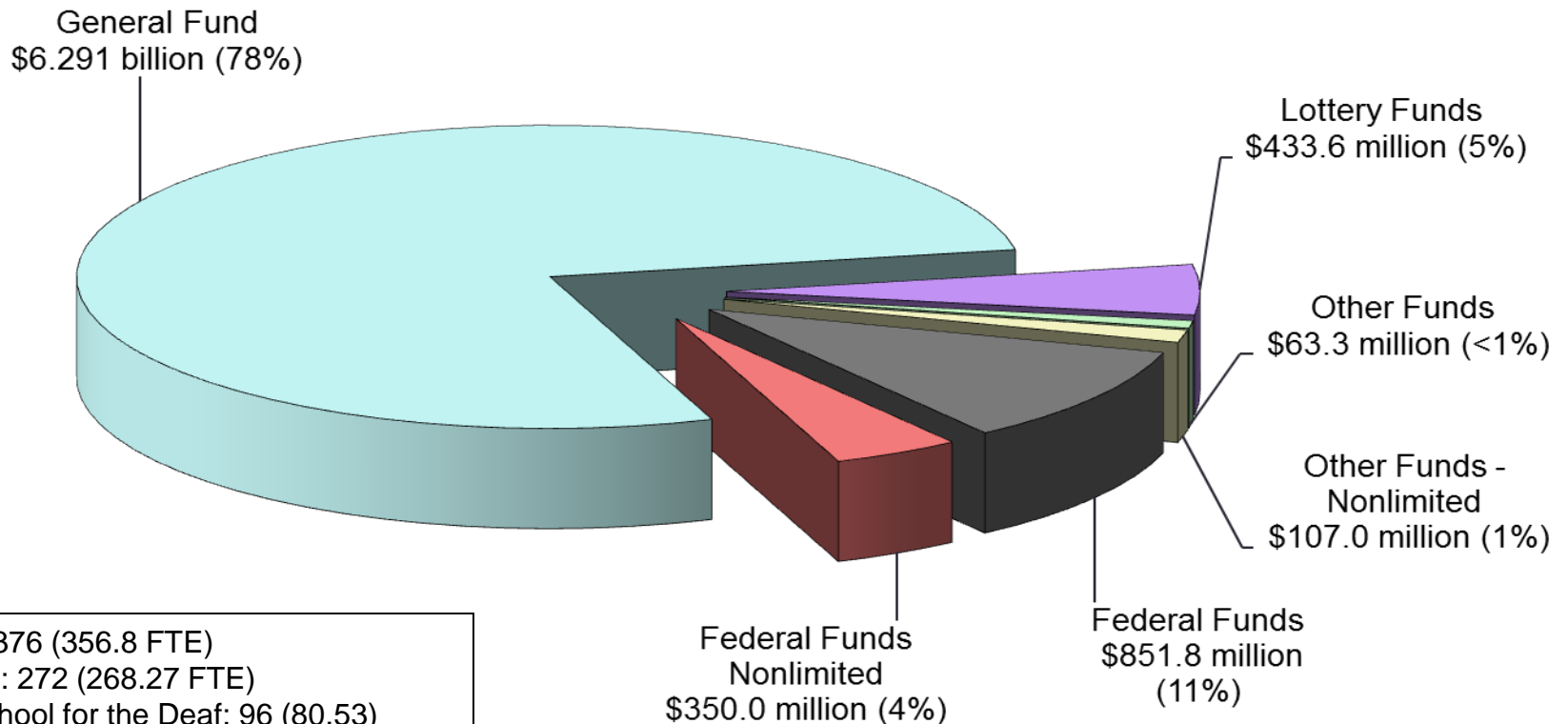
Target Group

- All K-12 students, schools and districts
- Incarcerated youth
- Pre-school children with disabilities or developmental delays
- Children with disabilities



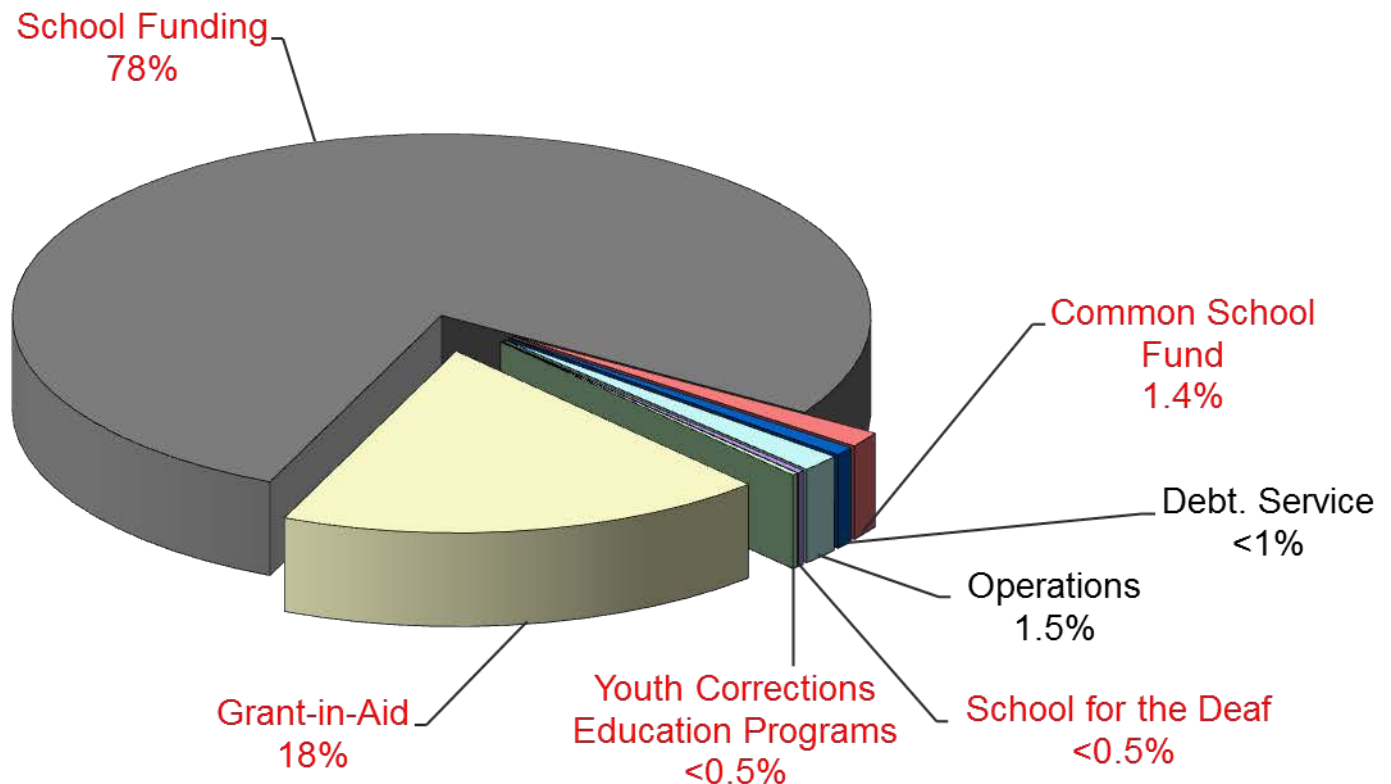
2013-15 Current Service Level (CSL) Budget By Fund Type

\$8.097 Billion All Funds



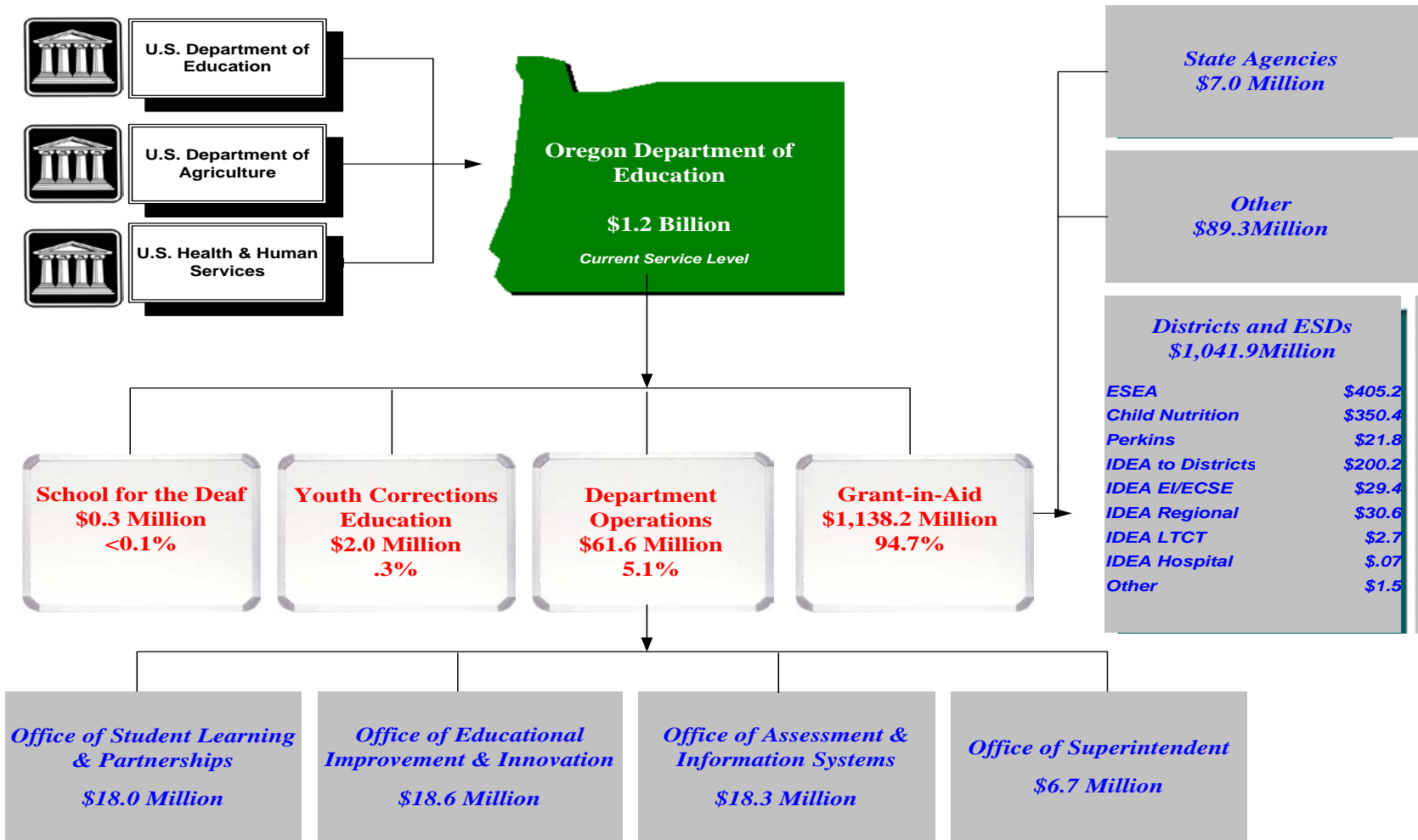
Positions: 376 (356.8 FTE)
Operations: 272 (268.27 FTE)
Oregon School for the Deaf: 96 (80.53)
Youth Corrections Ed Program: 8 (8.00 FTE)

About 98% of ODE's Budget is Distributed to Schools and Programs that Serve Students and Others Locally*



*Based on 2011-13 LAB and 2013-15 CSL budget

Federal Funds Are a Significant Source of Funding



Federal Funds Support the Majority of Operations In the Office of Learning and the Early Learning Division

- **Office of Learning, Student Services Section** - primarily special education
 - a projected 73.1% of 2013-15 expenditures and 71.0% of the 2015-17 current service level budget is comprised of Federal Funds in this office

- **Office of Learning, Instruction, Standards, Assessment & Accountability** - primarily No Child Left Behind/Elementary and Secondary Education Act programs
 - a projected 55.3% of 2013-15 expenditures and 43.9% of the 2015-17 current service level budget is comprised of Federal Funds in this office

- **Early Learning Division** -
 - a projected 68.1% of 2013-15 expenditures and 66.1% of the 2015-17 current service level budget is comprised of Federal Funds in this office



Office of Learning - Instruction, Standards, Assessment & Accountability

- ❑ Provides leadership and support to districts and schools, professional development for teachers and administrators, and tools for student success through a variety of programs
- ❑ Includes responsibilities for over two dozen state and federal grants such as providing technical assistance and trainings to grantees, monitoring programs for compliance with applicable regulations, collaborating with partners statewide, and collecting program data for required reporting
- ❑ Programs managed by this Office include the following:
 - ❑ Alternative Education
 - ❑ Accelerated Learning (*e.g.*, dual credit, expanded options, Advanced Placement)
 - ❑ Career and Technical Education
 - ❑ Charter Schools
 - ❑ Common Core State Standards



Office of Learning - Instruction, Standards, Assessment & Accountability, cont.

- ❑ Educator Effectiveness (SB 290 and Framework)
- ❑ ESEA Flexibility Waiver
- ❑ Federal Compensatory Grant Programs under ESEA (such as Title IA, School Improvement, Teacher Quality, Migrant Education, Vocational Education)
- ❑ FIRST Grant (STEM)
- ❑ Focus & Priority Schools
- ❑ Instructional Materials
- ❑ Physical Education Grant
- ❑ School District Collaboration Grant
- ❑ Statewide Support for School Improvement
- ❑ State Academic Content Standards Setting
- ❑ Talented and Gifted
- ❑ Teacher/Administrator Mentoring Grant



Office of Learning - Education Equity

Responsibilities:

- ❑ Closing the Achievement Gap
- ❑ Migrant Education
- ❑ Civil Rights
- ❑ English Language Learners



Office of Learning: Student Services

- ODE is the designated State Education Agency (SEA) for programs and services to children with disabilities and as such is responsible for:
 - Annual federal compliance and performance monitoring and reporting
 - Dispute resolution, compliant investigations, and due process hearings
 - Administration of the federal Child Nutrition Program
 - Oversight of large-scale implementation of federally funded system improvement activities such as Response to Intervention (RTI)

- Responsible for state and federal grants and programs in the areas of early childhood, special education and interagency educational services (such as services to youths in Oregon Youth Authority facilities)
 - Includes providing technical assistance to grantees, trainings, monitoring programs for compliance with applicable regulations, collaborating with partners statewide, and collecting program data for required reporting

Office of Learning, Student Services, cont.

Programs managed by this office include the following:

- ❑ Oregon Head Start/PreKindergarten Program (OPK)
- ❑ Early Intervention/Early Childhood Special Education (EI/ECSE)
- ❑ Blind and Visually Impaired Student Trust Fund
- ❑ Oregon School for the Deaf
- ❑ Regional Programs
- ❑ Long-Term Care and Treatment Programs
- ❑ Hospital Programs
- ❑ Youth Corrections Education/Juvenile Detention Programs
- ❑ Federal Special Education Grants to Districts and Other Eligible Programs



Office of Learning - Instruction, Standards, Assessment & Accountability, cont.

- Develops and maintains the agency's technical and information infrastructure to provide:
 - Internal support to ODE staff and programs
 - External support to districts, schools, and education service districts regarding required data collection and reporting that forms the basis for agency performance measures as well as state and federal reports
- Designs, develops and implements Oregon's statewide student assessment system, which includes ensuring the assessments meet federal guidelines for administration and standards for reliability and validity
- Coordinates the collection, review, validation, and submission of data for over 100 reports to the U.S. Department of Education and others
- Provides training to educators on the effective use of data to improve student outcomes by tailoring instruction to individual student needs



Student Assessments and Accountability

- ❑ Student assessments are required by ORS 329.485 and federal law
- ❑ ODE is responsible for establishing content standards that contain descriptions of what students should know and be able to do. Assessments measure what they know using these standards as the basis for the assessments
- ❑ Test results are used as part of state and federal accountability, school and district improvement processes, state performance measures and a source of evidence for the assessment of essential skills requirement of the high school diploma
- ❑ The current state assessment known as “OAKS” (Oregon Assessment of Knowledge and Skills), is changing to Smarter Balanced
- ❑ The state’s assessment and accountability program is supported by General Fund and federal funds:
 - ❑ \$11 million from a federal assessment grant; and
 - ❑ Approximately \$5 million General Fund



Office of Research and Data Analysis

- Provides research and analysis on a broad range of education issues
 - Data and analysis for the governor, legislators, and other policymakers
 - Internal analytical support to ODE offices and programs
 - External support to districts, schools, and education service districts
 - Provision of data and assistance to outsider researchers and the public

- Conducts joint research with OEIB staff

- Provides staff to the Quality Education Commission

- 4 positions (in current service level budget)



Office of the Deputy Superintendent

- ❑ Provides statewide leadership in improving P-12 education
- ❑ Develops and recommends education policy to the State Board of Education based on effective practices
- ❑ Directs and prioritizes agency mission and activities
- ❑ Oversees the operation of the department
- ❑ Confers and coordinates with the Governor, the Chief Education Officer, other state education agencies and stakeholders
- ❑ Staffs the State Board of Education
- ❑ Communicates with schools and the community
- ❑ Provides OAR writing, legal analysis for agency
- ❑ Coordinates Strategic Initiatives & Network of Quality Teaching & Learning
- ❑ Provides Human Resources services to the agency
- ❑ Maintains consultation efforts with Oregon federally recognized Tribes through a Government to Government process

Office of Information Technology

- ❑ Supports ODE computers and cell phones
- ❑ Provides technical support to ODE, ELD, YDD, OEIB
- ❑ Develops & enhances software applications
- ❑ Collects & stores student, staff, and school-level data, interfacing with private, federal, and other state agencies (College Board, DHS, TSPC, DAS, US Census, National Student Clearinghouse)
- ❑ Ensures data security & privacy



Office of Finance and Administration

- ❑ Provides support to other ODE offices in the areas of accounting, budgeting, facilities, procurement and contracting
- ❑ Responsible for administration of the State School Fund, including calculation and distribution of payments and technical assistance to districts
- ❑ Other programs managed by this office include:
 - ❑ Fingerprinting and Background Checks of Certain District Personnel
 - ❑ Pupil Transportation Program
 - ❑ Review and Verification of District Audits for State and Federal Reporting
 - ❑ Section 1512 Reporting Under the American Recovery and Reinvestment Act