



# EARLY LEARNING DIVISION

## FEBRUARY 4, 2015

Megan Irwin, Acting Early Learning Systems Director  
David Mandell, Director of Policy & Research

# Early Learning Division's Mission



**The Early Learning Division supports all of Oregon's young children and families to learn and thrive.**

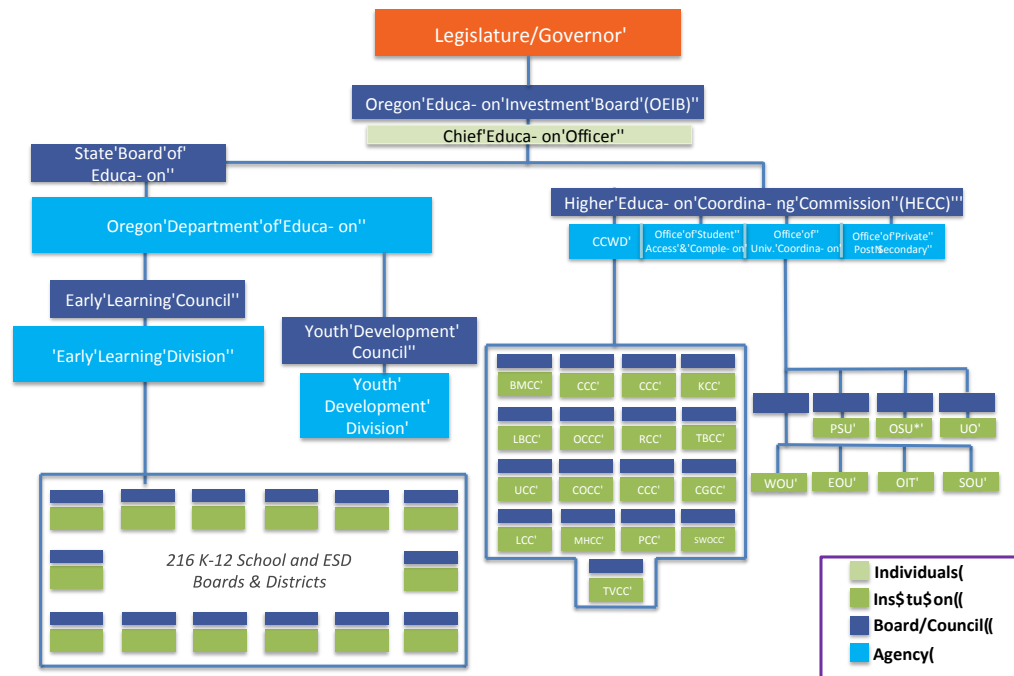
# Early Learning Division's Goals

- Children arrive at kindergarten ready to succeed.
- Families are healthy, stable and attached.
- The Early Learning System is coordinated, aligned and family-centered.



# ELD: A Division of the Oregon Department of Education

## New Education Structure



# Why child care matters

---

**Supporting  
working families**

**Promoting positive  
child development**

# Partnering to support child care

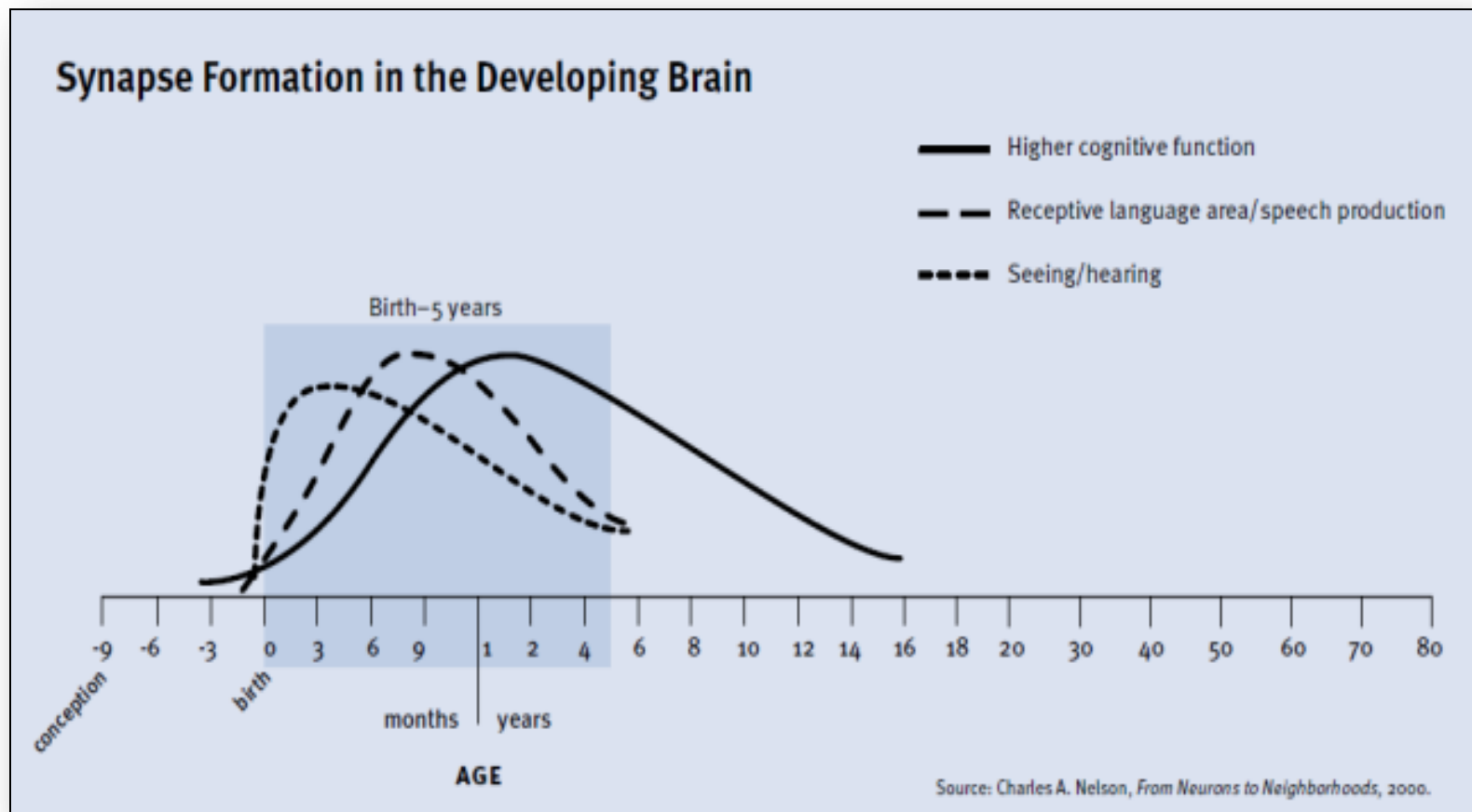
## Department of Human Services

- Employment Related Day Care
  - ▣ Subsidies for low-income working families to offset the cost of child care

## Early Learning Division

- Licensing
  - ▣ Ensuring health & safety
- Professional development
- Investments in quality
  - ▣ QRIS

# Early experiences matter



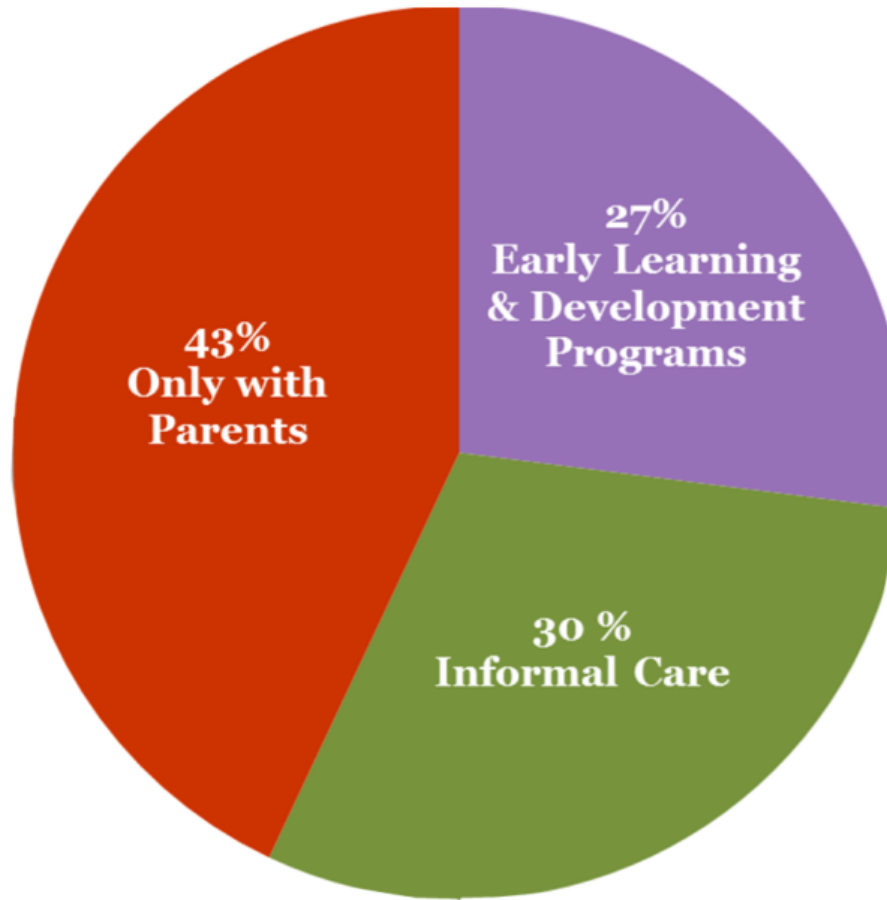
# Early learning happens in many settings



- Head Start program
- School-based preschool
- Child care center
- Home-based family child care provider
- At home with family



# Majority of children under age five experience out of home care



**Early Learning and Development Programs** – includes licensed center and family child care, Head Start, Oregon Pre-K, paid care in nonrelative's home, and group activities

**Informal Care** – Care in a child's home by a relative or nonrelative, care in a relative's home, and unpaid care in nonrelative's home

**Only with Parents** – includes children whose parents reported "no child care or educational program, paid or unpaid, for this child"

# Early Learning Division Programs

- Oregon Prekindergarten
  - ▣ Oregon funds over 7,600 preschool slots for 3 and 4 year olds across the state
- Healthy Families Oregon
  - ▣ HFO provides family support and coaching to eligible parents and caregivers
  - ▣ Over 2,470 families received family support and coaching in 2014
- Relief Nurseries
  - ▣ Provide respite care and family services in order to prevent the cycles of child abuse and neglect
- Child Care Supports
  - ▣ Oregon's Quality Rating and Improvement System encourages licensed child care providers to meet child learning and development standards and supports them in doing so.
  - ▣ Child Care Resource & Referral Network
  - ▣ Early childhood professional development system

# Consumer protection for parents

---

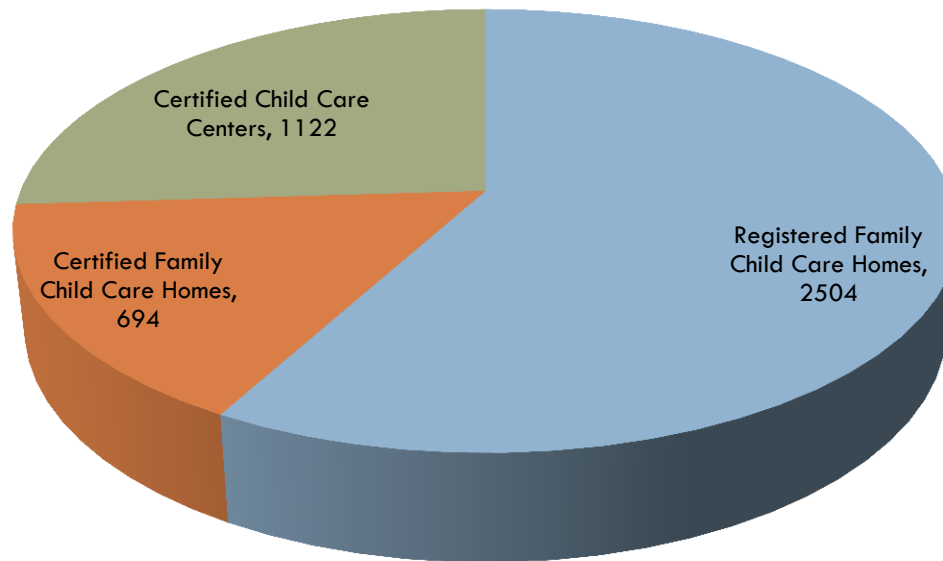
- Licensing and Compliance
  - ▣ Background checks
  - ▣ On-site health & safety monitoring of all licensed facilities
  - ▣ Child Care Rule Revisions
  - ▣ Complaints and public inquiries

# Licensed child care

---

- Certified Child Care Center
- Certified Family Child Care Home
  - ▣ Up to sixteen children in providers own home
- Registered Family Child Care Home
  - ▣ Up to ten children in providers own home

# Licensed Child Care in Oregon



There are approximately 4,320 licensed child care facilities in Oregon.

# Licensed exempt child care

## **Primary Examples:**

- Family child care providers serving three or fewer children
- Preschools serving three- and four-year olds for fewer than four hours per day
- Child care facilities operated by a government agency

# Child Care Development Fund

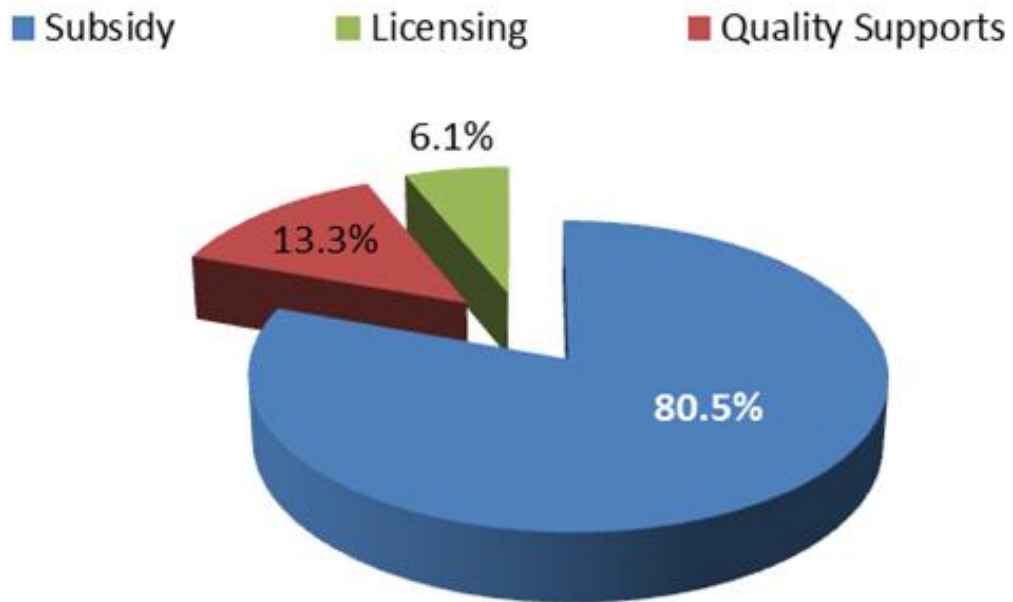


## *Purpose:* CCDF

- ❑ provide financial assistance to low-income families to access child care so they can work or attend a job training or educational program.
- ❑ provide funding to improve the quality of child care and increase the supply and availability of child care for all families, including those who receive no direct assistance through CCDF.

# How Oregon uses CCDF

## CCDF Allocations 2013-15



**Total CCDF 2013-15: \$135 million**



# What is quality early care & education



- ❑ Healthy & safe environment
- ❑ Warm and supportive caregiver/child interactions
- ❑ Support for social-emotional development
- ❑ Language & literacy rich environment
- ❑ Cognitively stimulating activities
- ❑ Two-way communication with families

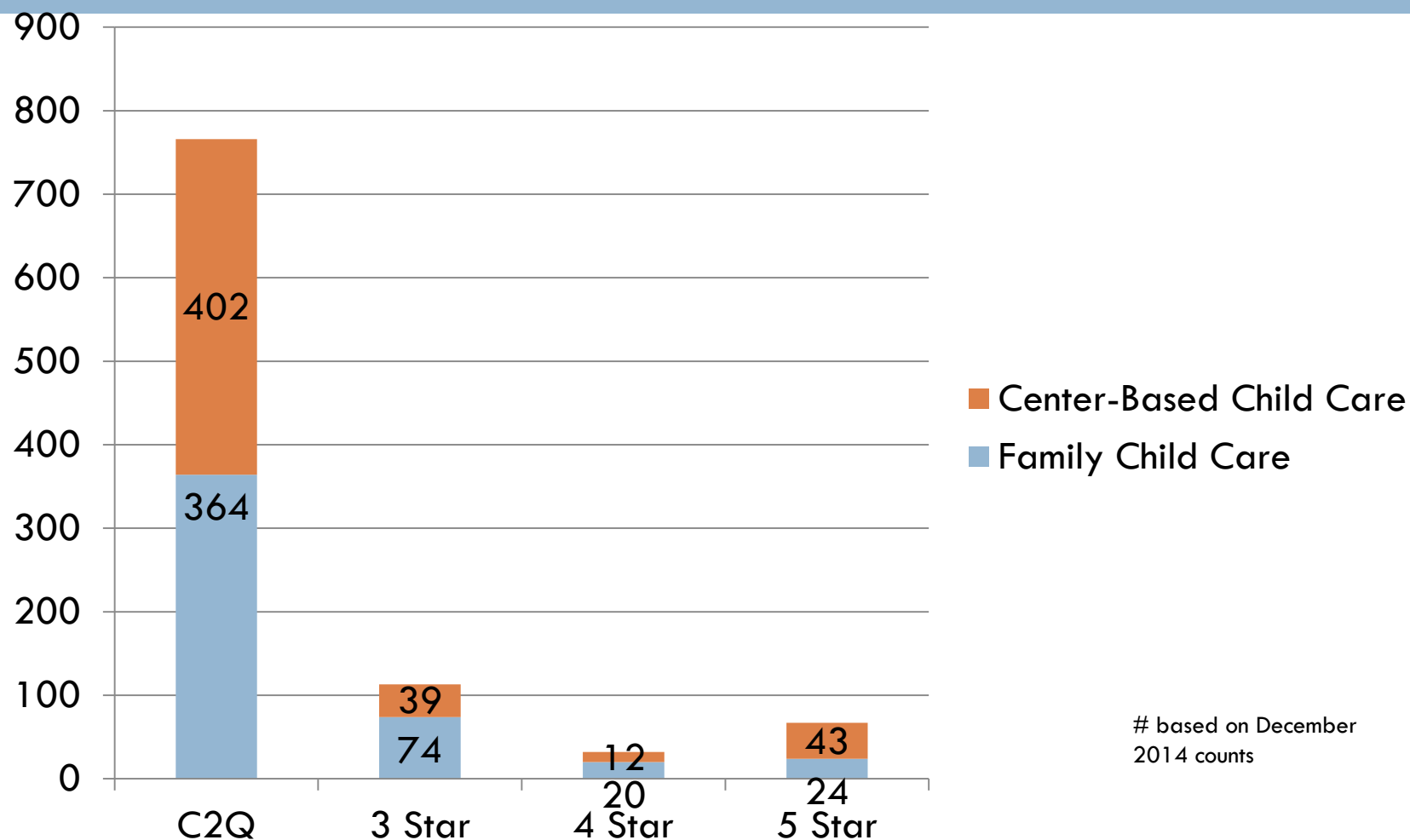
# Oregon's Child Care Quality Rating and Improvement System (QRIS)

- QRIS is a voluntary system designed to raise the quality and consistency of licensed early learning programs
- Framework includes
  - ▣ Standards
  - ▣ Program & Practitioner Supports
  - ▣ Financial Incentives
  - ▣ Rating & Monitoring
  - ▣ Parent & Consumer Education

# Building towards quality



# QRIS Programs



# based on December  
2014 counts

# Changes to CCDF Rules

- Stronger focus on child development
- New monitory & safety requirements:
  - ▣ On-site monitoring of licensed exempt providers
    - Compliance by 11/19/2016
  - ▣ Fingerprinting and background checks
    - Compliance by 9/30/2017
  - ▣ Enhanced requirements for parent and public access to complaints and compliance information
    - Compliance by the earlier of a) 11/19/2017 or b) 1 year after monitoring in place