



OREGON DEPARTMENT OF CORRECTIONS

Colette S. Peters, Director

February 4, 2015

Agency Overview



DOC Mission

2

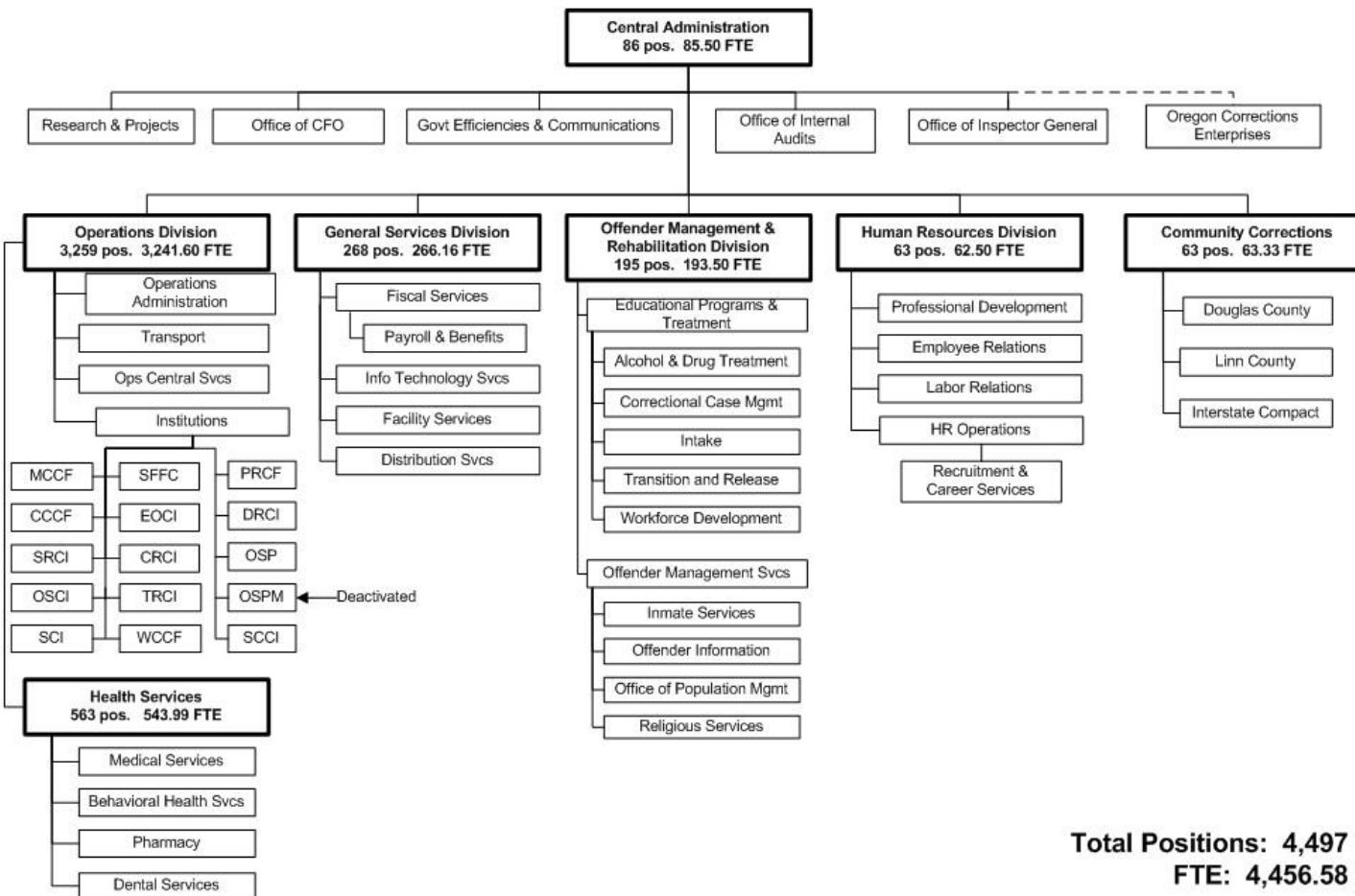
The mission of the Oregon Department of Corrections is to promote public safety by holding offenders accountable for their actions and reducing the risk of future criminal behavior.



Agency Organization Chart

OREGON DEPARTMENT OF CORRECTIONS

2015-17 Governor's Balanced Budget



Total Positions: 4,497
FTE: 4,456.58



DOC Facts

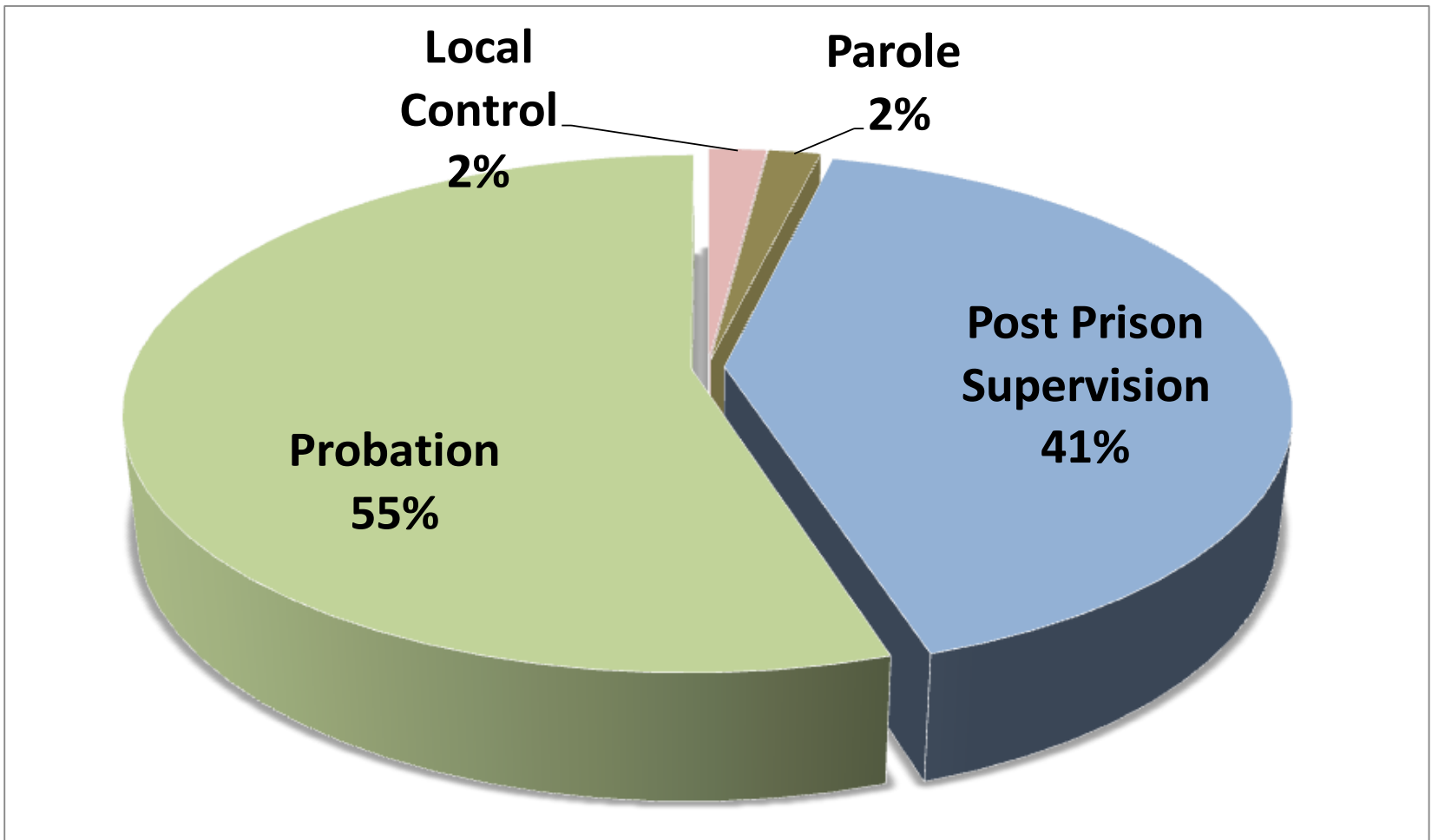
4

- ❑ DOC is the second largest GF state agency (behind DHS)
- ❑ 4,500 employees
- ❑ 14,500 adults in custody across the state
- ❑ 14 institutions across the state
- ❑ 32,000 offenders on community supervision
- ❑ \$1.4 billion biennial budget
- ❑ DOC admits about 5,000 new intakes and releases 4,500 offenders per year



Community Corrections Supervision

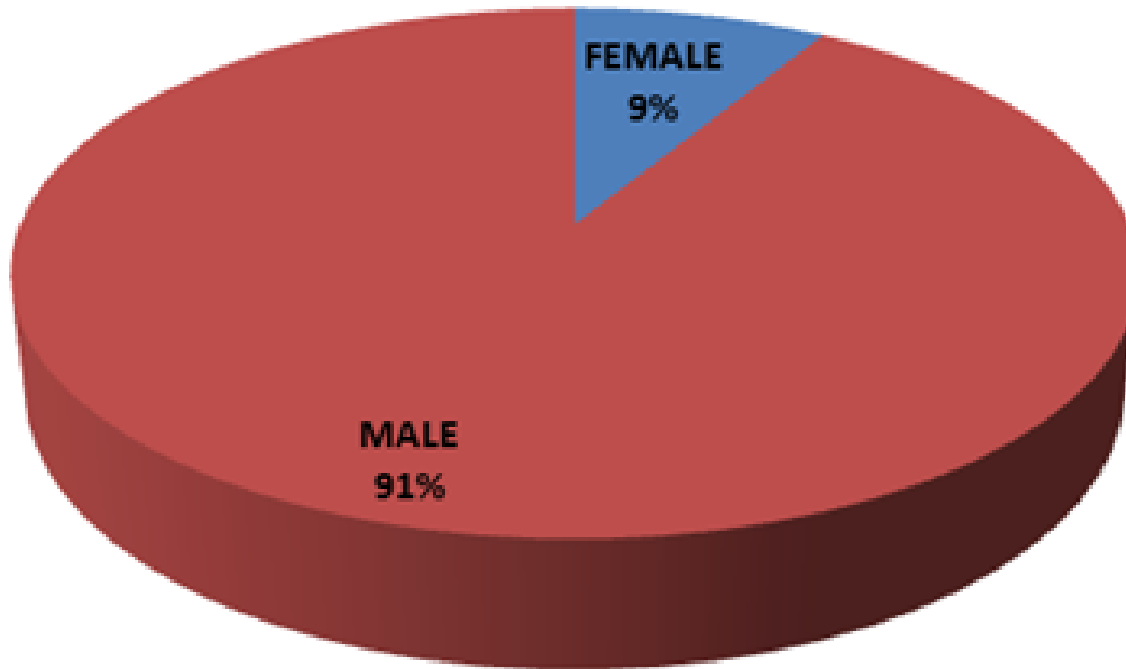
5





Gender

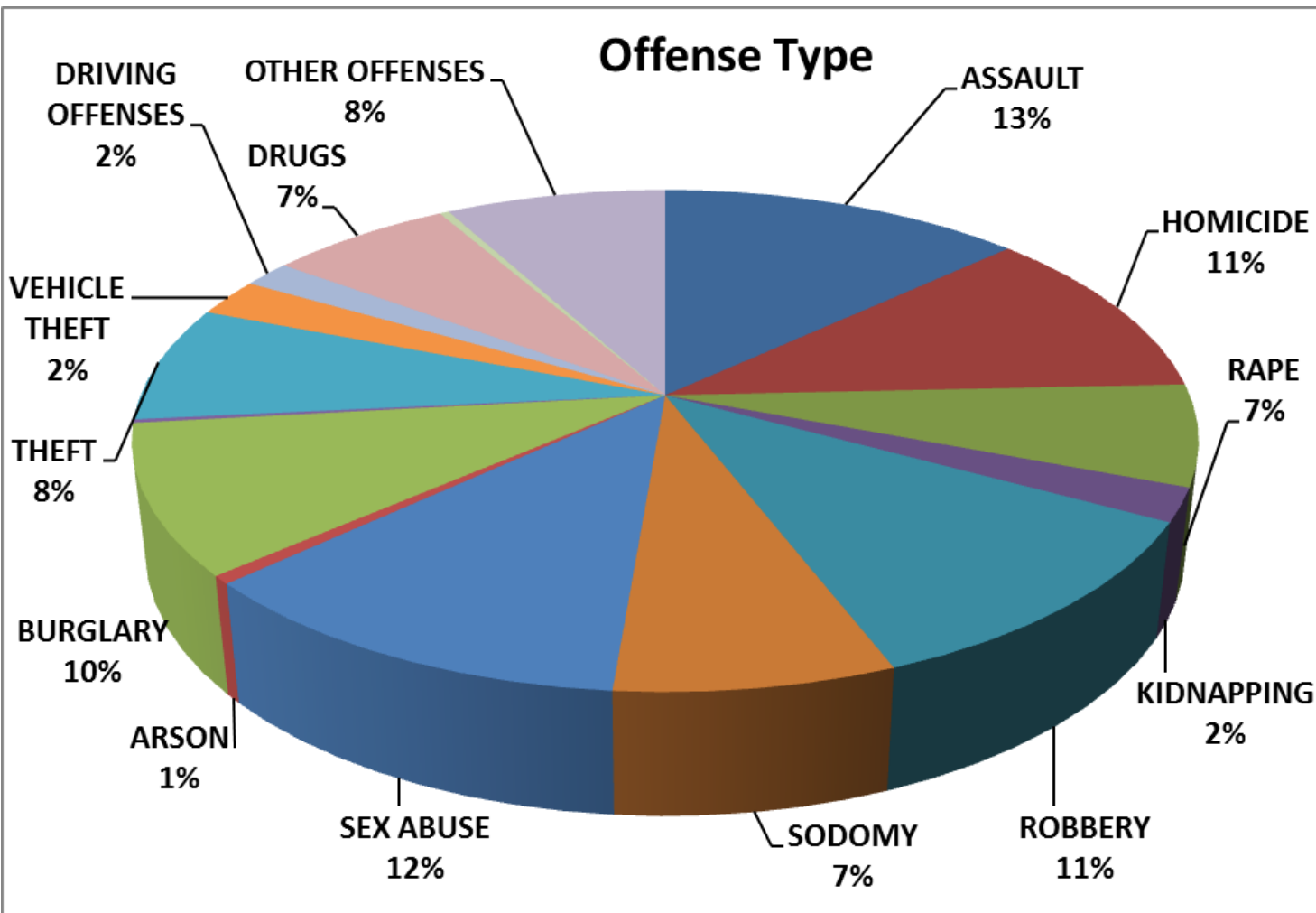
Gender





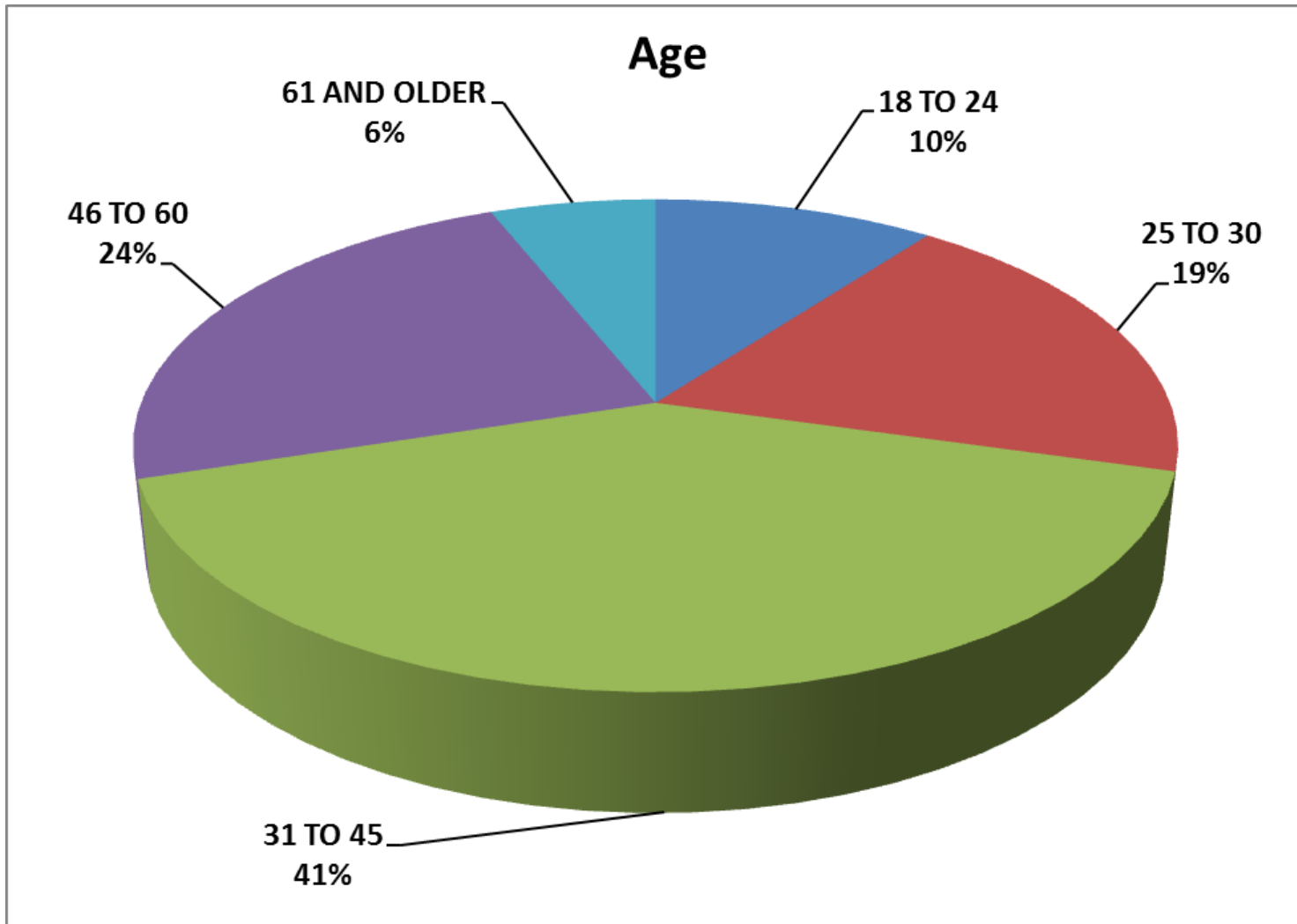
Crime Type

7





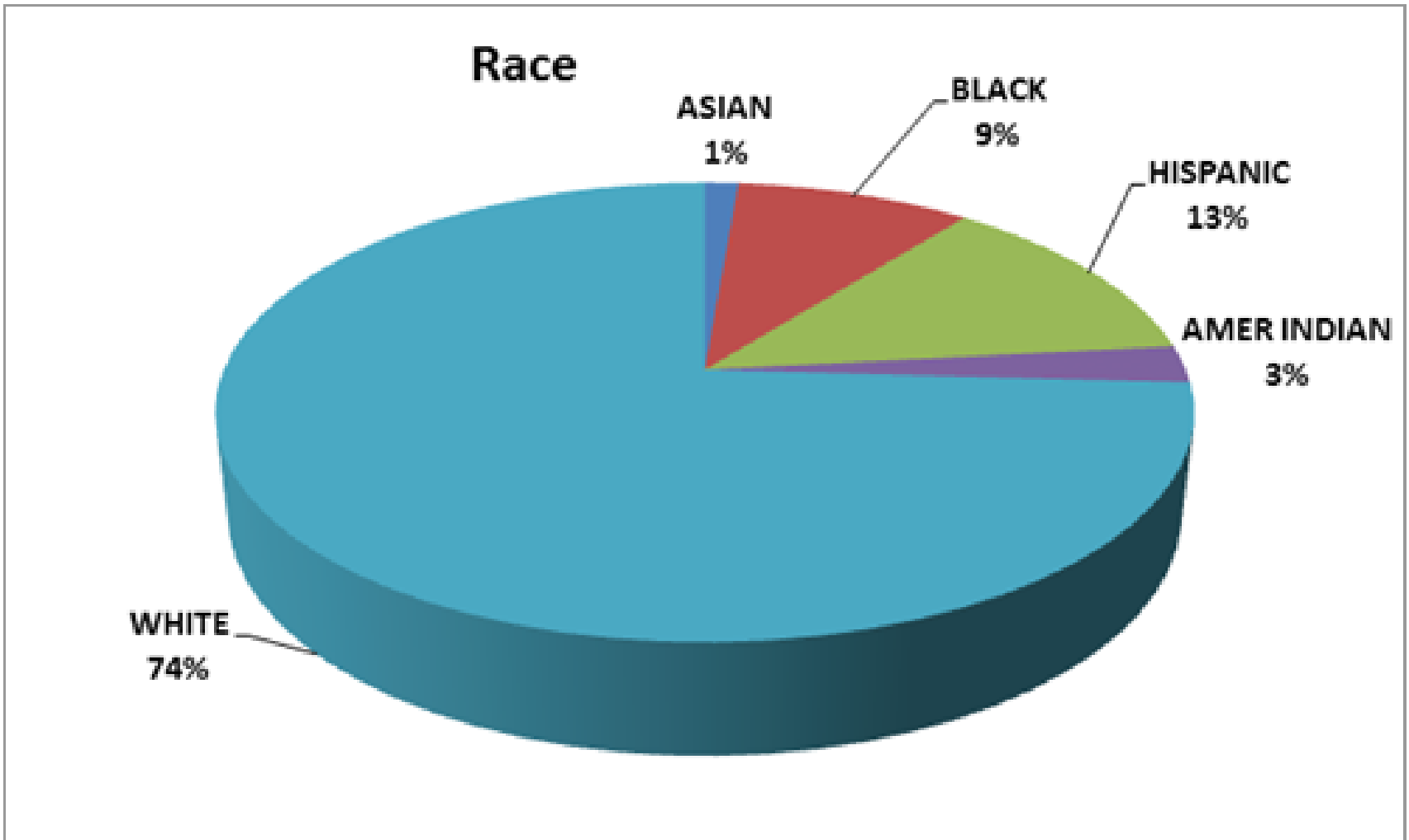
Age





Race

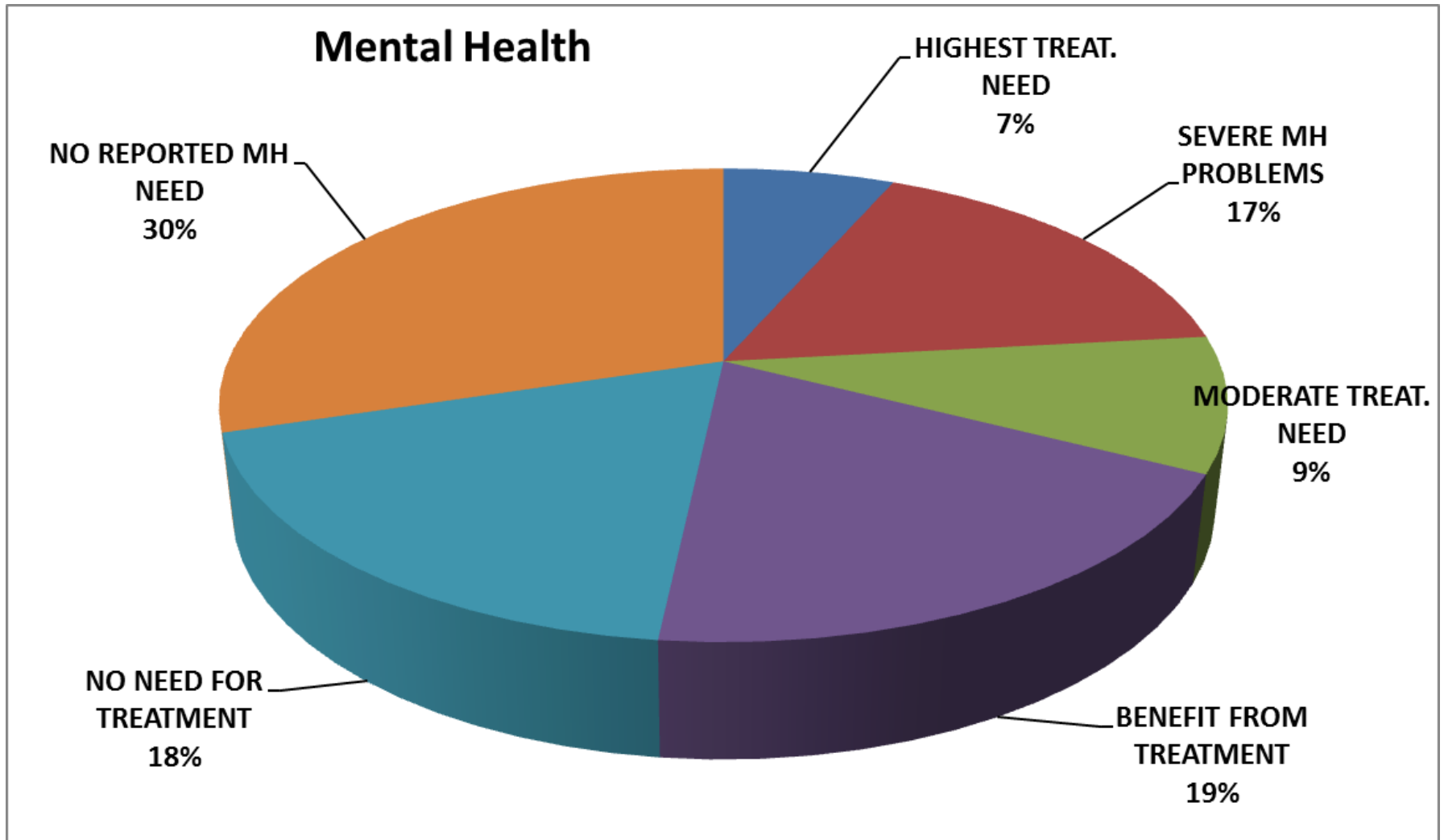
9





Mental Health Need

10

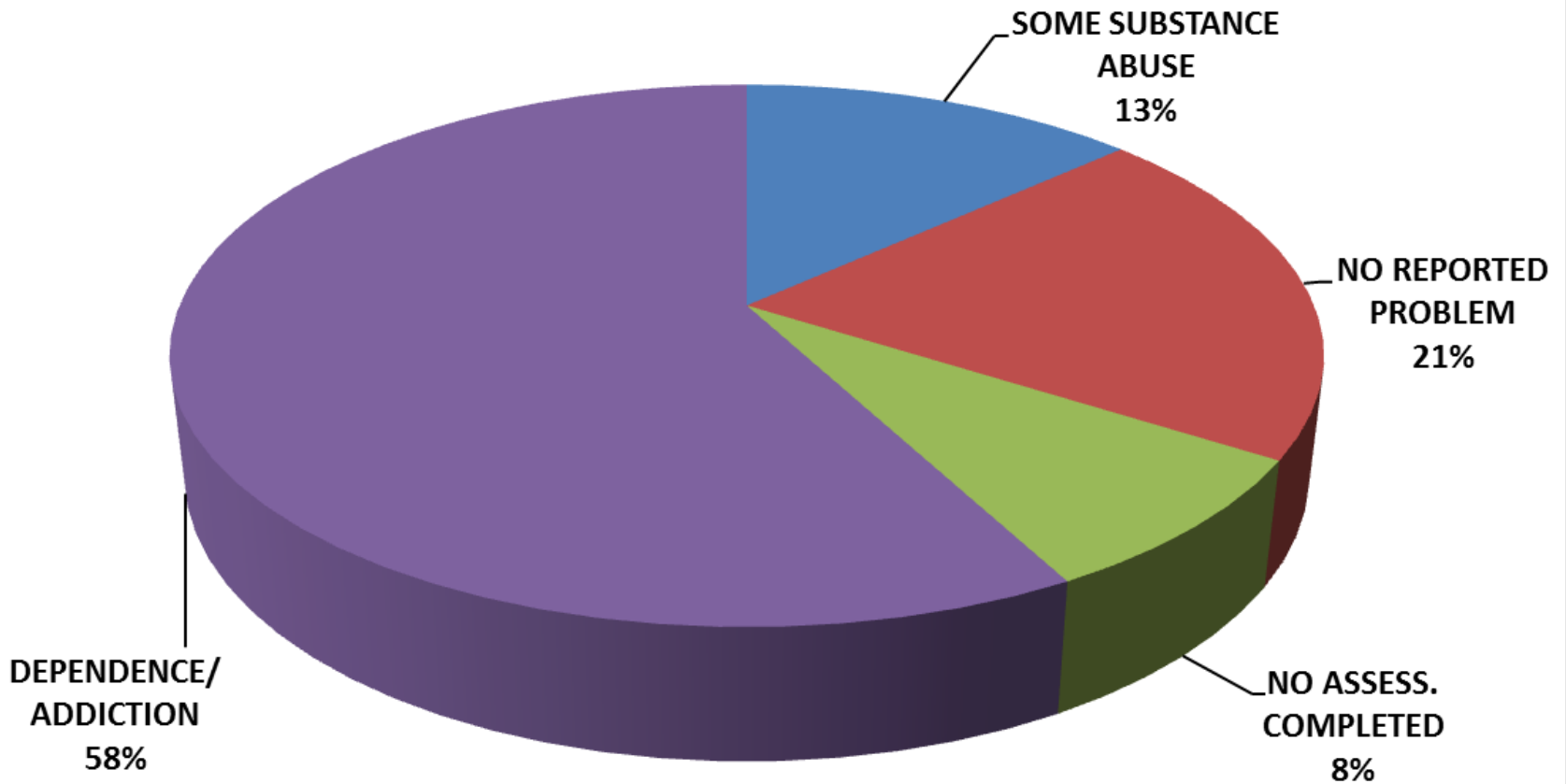




Substance Abuse

11

Substance Abuse





What Works

12

- Research and experience tell us that the most effective way to reduce future criminal behavior is to provide inmates with the right combination of:
 - Treatment
 - Education
 - Job preparation
 - Visitation



Performance Management

13

- Correctional Outcomes through Research and Engagement
 - ▣ Fundamentals Map
 - ▣ Goals
 - ▣ Values
 - ▣ Scorecard
 - ▣ Shared Vision
 - ▣ Breakthrough Initiatives



2015-17 Governor's Balanced Budget

Agency Summary

Division	General Fund	Other Funds	Federal Funds	Total Funds	Pos	FTE
Operations	716,435,023	10,054,808	-	726,489,831	3,259	3,241.60
Health Services	234,590,095	625,144	4,437,428	239,652,667	563	543.99
Administration	70,827,378	1,276,379	972,128	73,075,885	86	85.50
General Services	57,380,984	8,110,305	-	65,491,289	268	266.16
Human Resources	14,596,706	5,150	-	14,601,856	63	62.50
Community Corrections	254,216,749	6,757,387	300,551	261,274,687	63	63.33
Offender Mgmt & Rehab	67,379,193	9,510,156	-	76,889,349	195	193.50
Debt Service	130,897,616	-	1,119,495	132,017,111	-	-
Capital Improvement	2,724,041	-	-	2,724,041	-	-
Capital Construction	-	26,467,130	-	26,467,130	-	-
Total	1,549,047,785	62,806,459	6,829,602	1,618,683,846	4,497	4,456.58



Questions

15



503-945-0927

Colette.S.Peters@doc.state.or.us