

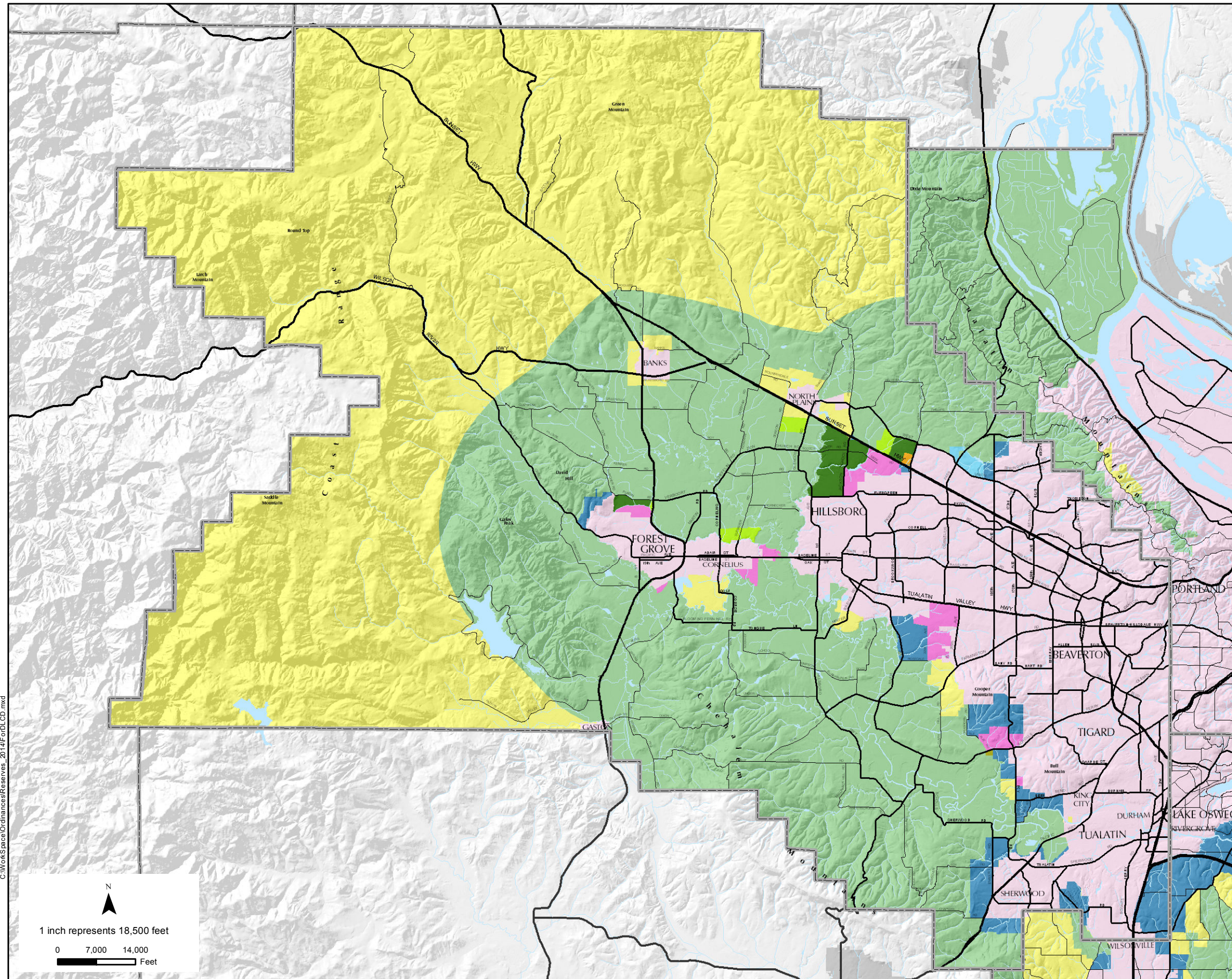
Washington County Ordinance No. 785

- Change from undesignated to Rural Reserve
- Change from Urban Reserve to Rural Reserve
- Change from Rural Reserve to Urban Reserve
- Change from Rural Reserve to undesignated
- Change from Urban Reserve to undesignated
- Added to Regional UGB
- Urban Area
- Rural reserves
- Urban reserves
- Unchanged undesignated

This product is for informational purposes and may not have been prepared for, or be suitable for legal, engineering, or surveying purposes. Users of this information should review or consult the primary data and information sources to ascertain the usability of the information. Care was taken in the mapping but there are no warranties for this product. However, notification of any errors will be appreciated.

Department of Land Use and Transportation
Planning and Development Services Division

May 29, 2014



C:\WorkSpace\Ordinances\Reserves_2014\F of D\LCD.mxd