



**OREGON** DEPARTMENT OF
EDUCATION
EARLY LEARNING DIVISION

EARLY LEARNING DIVISION UPDATE

FEBRUARY 2, 2015

Megan Irwin, Acting Early Learning Systems Director

Early Learning Division Mission



The Early Learning Division supports all of Oregon's young children and families to learn and thrive.

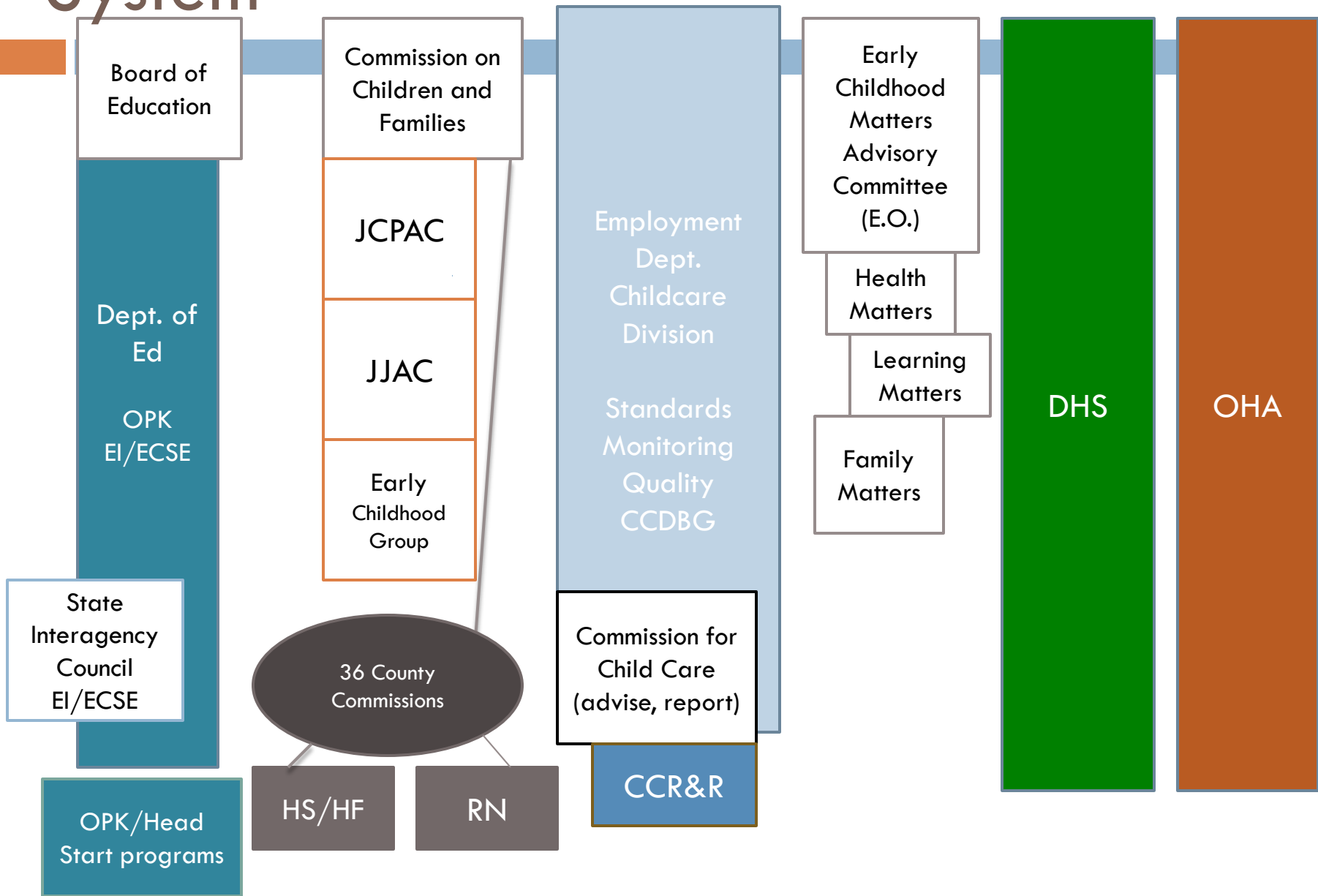
Early Learning Division's Goals

- Children arrive at kindergarten ready to succeed
- Families are healthy, stable and attached
- The Early Learning System is coordinated, aligned and family-centered

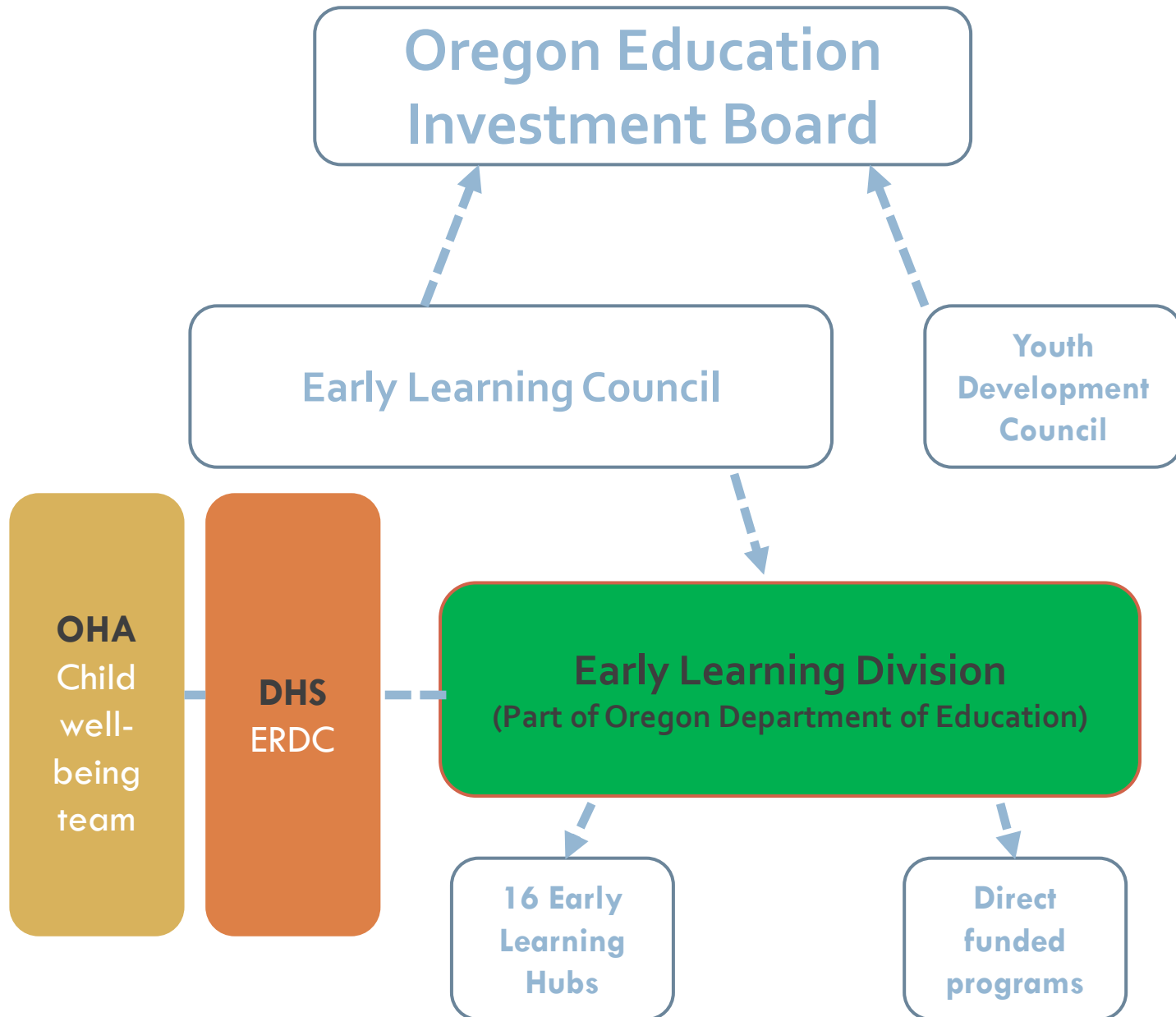




Oregon's Historical Early Learning System



New Early Learning Structure





Early Learning Division Structure

- Director's Office
 - **Core Functions:** Division-wide management, partnerships with other state agencies, communications, oversee implementation of the equity lens and ensure that equity is embedded across the Division, community engagement, strategic planning, Early Learning Council staff, legislative relations.
- Program Team
 - **Core functions:** Oversees and administers all ELD programs including Oregon Pre-Kindergarten, state Early Head Start, Relief Nurseries, Healthy Families Oregon, Child Care Resource and Referral, Quality Rating Improvement System, Head Start Collaboration, professional development efforts. Administers the Race to the Top Early Learning Challenge Grant. Responsible for engaging early learning programs run by other state agencies with the goal of operationalizing “system coordination” at the state level.
- Policy & Partnership Team
 - **Core Functions:** Oversee implementation of Early Learning Hubs, oversee Age 3 to Grade 3 alignment, support the ELC as directed, oversee policy development and research, legislative relations to support the Director.
- Business and Operations/Regulatory and Compliance Team (Office of Child Care)
 - **Core Functions:** Child care licensing, monitoring and regulation, administration of CCDF block grant, budget, procurement/contracting, office operations, IT, liaison with ODE shared services **and supports.**
 - **Field offices:** Many of the staff in this unit work as licensing specialists out in field offices across the state and are managed by three licensing managers. Each licensing specialist carries an average case load of 108 child care providers. Field offices are located in Tualatin, Gresham, North Portland, Salem, Eugene, Medford, The Dallas, Redmond and Milton Freewater.



Early Learning Programs

- Oregon Prekindergarten
 - Oregon funds over 7,600 preschool slots for 3 and 4 year olds across the state
- Healthy Families Oregon
 - HFO provides family support and coaching to eligible parents and caregivers
 - Over 2,470 families received family support and coaching in 2014
- Relief Nurseries
 - Provide respite care and family services in order to prevent the cycles of child abuse and neglect
- Child Care Supports
 - Oregon's Quality Rating and Improvement System encourages licensed child care providers to meet child learning and development standards and supports them in doing so
 - Child Care Resource & Referral Network
 - Early childhood professional development system



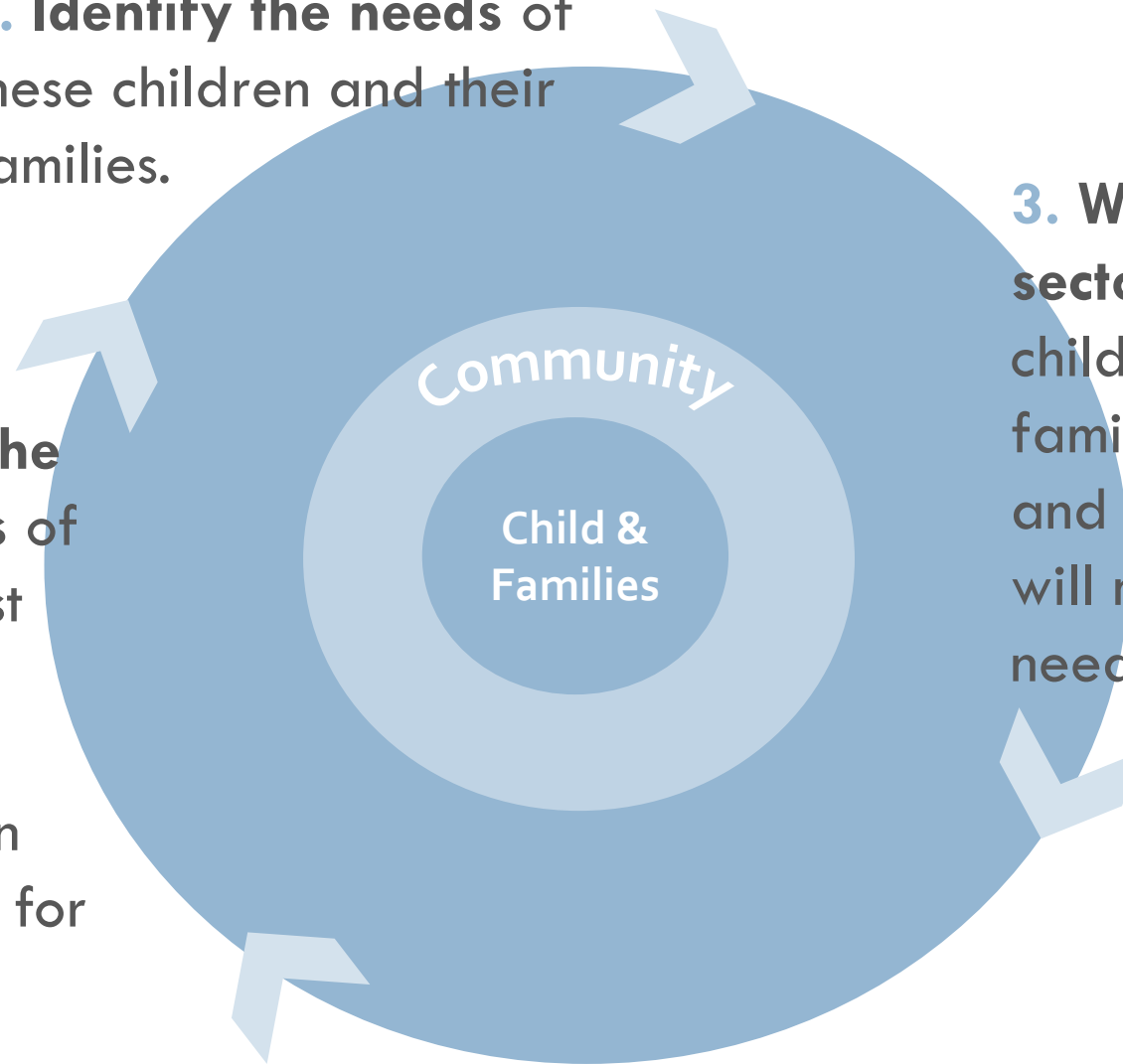
Early Learning Systems Transformation

- Early Learning Hubs
 - ▣ Launch of sixteen community-based Early Learning Hubs covering entire state
- Age 3 to Grade 3 Alignment
 - ▣ Kindergarten Assessment
 - ▣ Kindergarten Partnership and Innovation Fund
 - ▣ Age 3 to Grade 3 Literacy Initiative
- Equity
 - ▣ Operationalizing Oregon's Equity Lens for Early Learning



2. Identify the needs of these children and their families.

1. Identify the populations of children most at risk of arriving at kindergarten unprepared for school.



3. Work across sectors to connect children and families to services and support that will meet their needs.

4. Account for Outcomes collectively across the system.

Early Learning Hubs

