



CREATING SEAMLESS PATHWAYS FOR STUDENT SUCCESS FEBRUARY 2, 2015



Nancy Golden, Chief Education Officer

The Stakes



The opportunity for every Oregonian to reach their full potential is the key to unlocking a prosperous Oregon.

The Goal



By 2025, 40% of adult Oregonians will hold a bachelor's or advanced degree, 40% will have an associate's degree or a meaningful postsecondary certificate, and all adult Oregonians will hold a high school diploma.

The Vantage Point and Unduplicated Value

WHY WAS THE OEIB CREATED?

- Persistent barriers to student learning
- Growing student opportunity gap
- Entities impacting student success operating in silos

The Charge

WHAT WAS THE OEIB CREATED TO DO?

- Coordinate public education system from birth to college and career
- Establish statewide student learning outcomes
- Create seamless pathways to help students successfully navigate key transitions

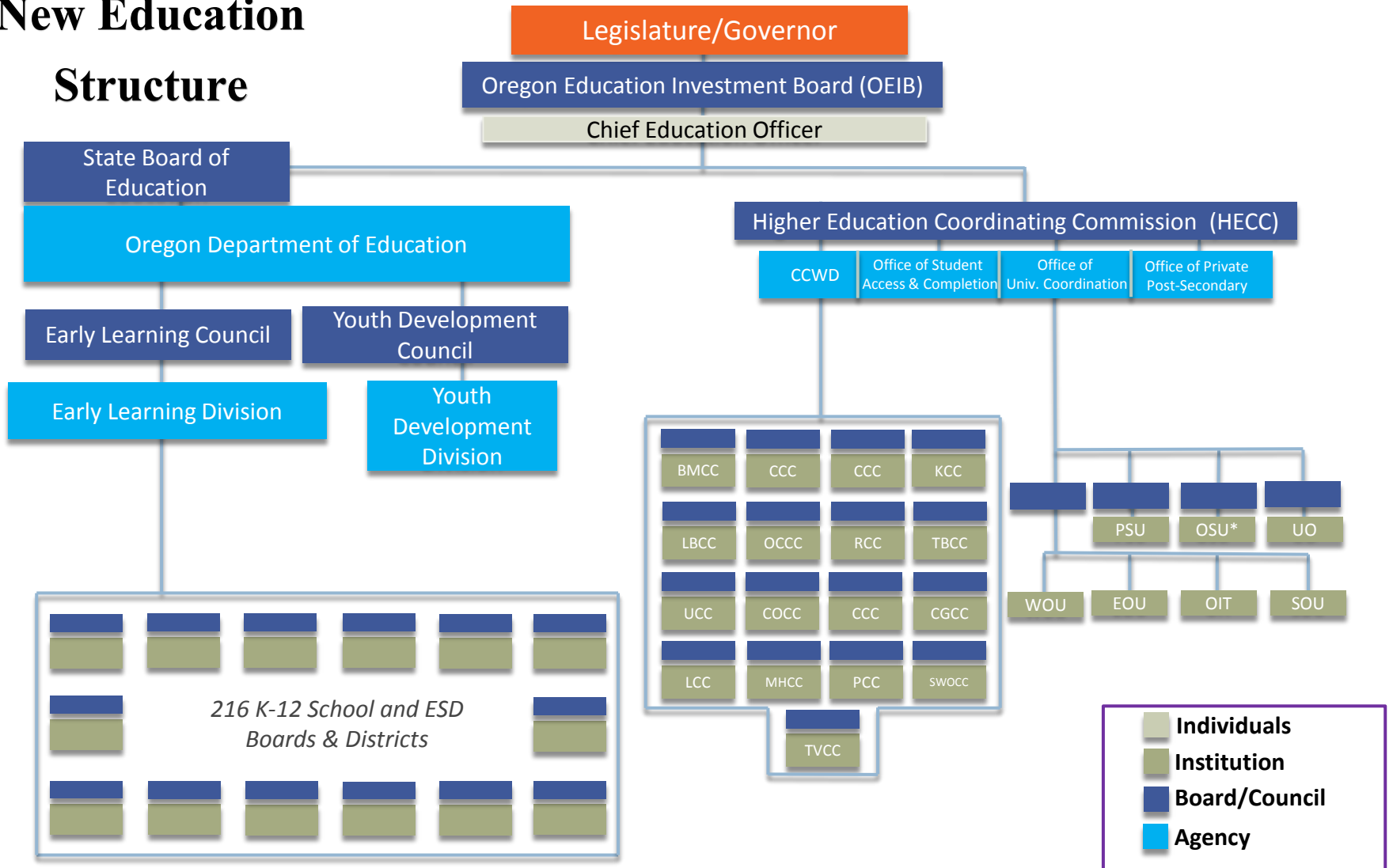
The Outcomes

Focusing on the Success of Every Student Across the Learning Continuum

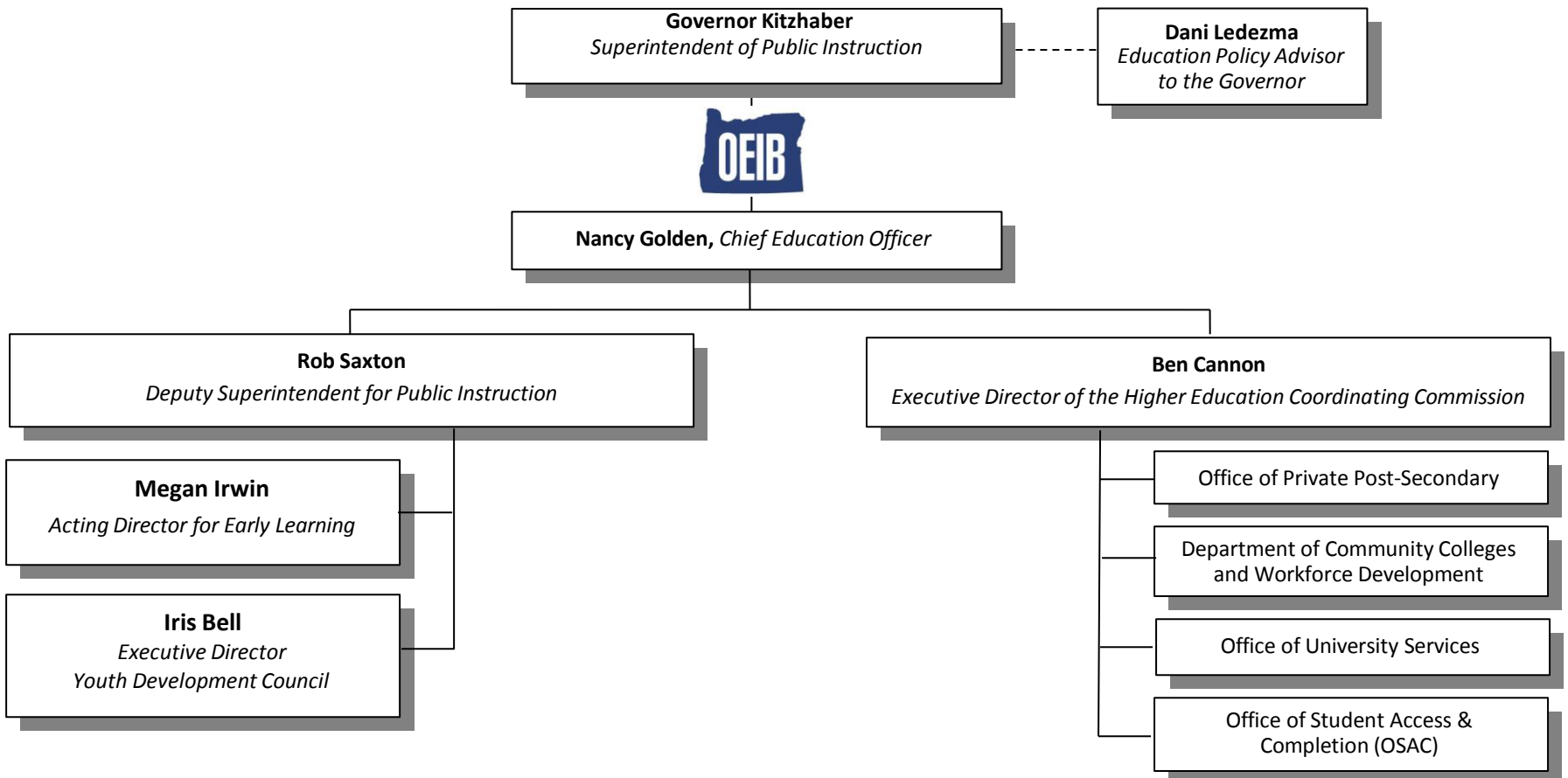
- Stable and attached families
- Ready to learn by Kindergarten
- Reading proficiently by 3rd Grade
- Completing high school
- Earning a career certificate or postsecondary degree

The Structure

New Education Structure



The Structure



The Framework

OREGON EDUCATION INVESTMENT BOARD

Common framework for student success

- Achievement Compacts

The Theory of Impact

OREGON EDUCATION INVESTMENT BOARD

Scaling programs and practice that demonstrate results for students

- ❑ Research and evidence-based practice
- ❑ Return on Investment

The Theory of Impact

OREGON EDUCATION INVESTMENT BOARD

Leveraging community-driven solutions and strategies

- ❑ Community Engagement
- ❑ Community Collaboratives
- ❑ Early Literacy, Statewide Literacy Campaign
- ❑ Chronic Absenteeism

The Theory of Impact

OREGON EDUCATION INVESTMENT BOARD

Access and opportunity for every student

- Equity Lens
- Closing the opportunity gap
- Addressing poverty

The Theory of Impact

OREGON EDUCATION INVESTMENT BOARD

Improving system capacity to deliver outcomes

- Connecting learning standards across continuum
- Effective student assessment
- Longitudinal data

The Theory of Impact

OREGON EDUCATION INVESTMENT BOARD

Supporting educators and prioritizing diversity

- Aligning teacher recruitment and preparation to ongoing professional support
- Network for educators' professional learning
- Diversifying the education workforce

Targeted Strategies to Accelerate Student Outcomes

OREGON EDUCATION INVESTMENT BOARD

Pathway to Kindergarten Readiness and 3rd Grade Reading

- Age 3 to Grade 3

Pathway to High School and Postsecondary Completion

- Accelerated Learning in Grades 11-14

Pathway Connecting Education to Careers

- STEM-Career Technical Education



Early Literacy

- ❑ Coordinated P-20 system allows us to design an integrated approach to early literacy

- ❑ Age 3 to Grade 3 Early Literacy Initiative
 - ❑ Extended time for learning through extended day and summer school programs

 - ❑ Effective culturally responsive curriculum

 - ❑ Development of coordinated standards

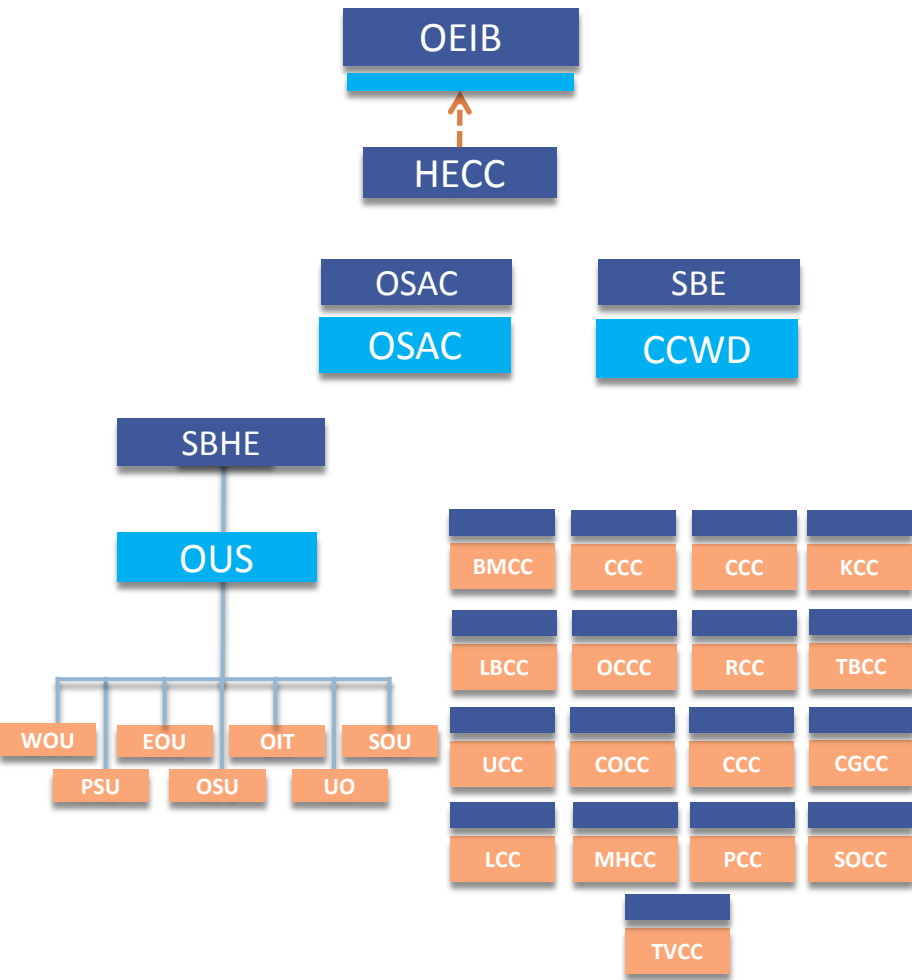
 - ❑ Identification of students in need

 - ❑ Locally constructed professional development

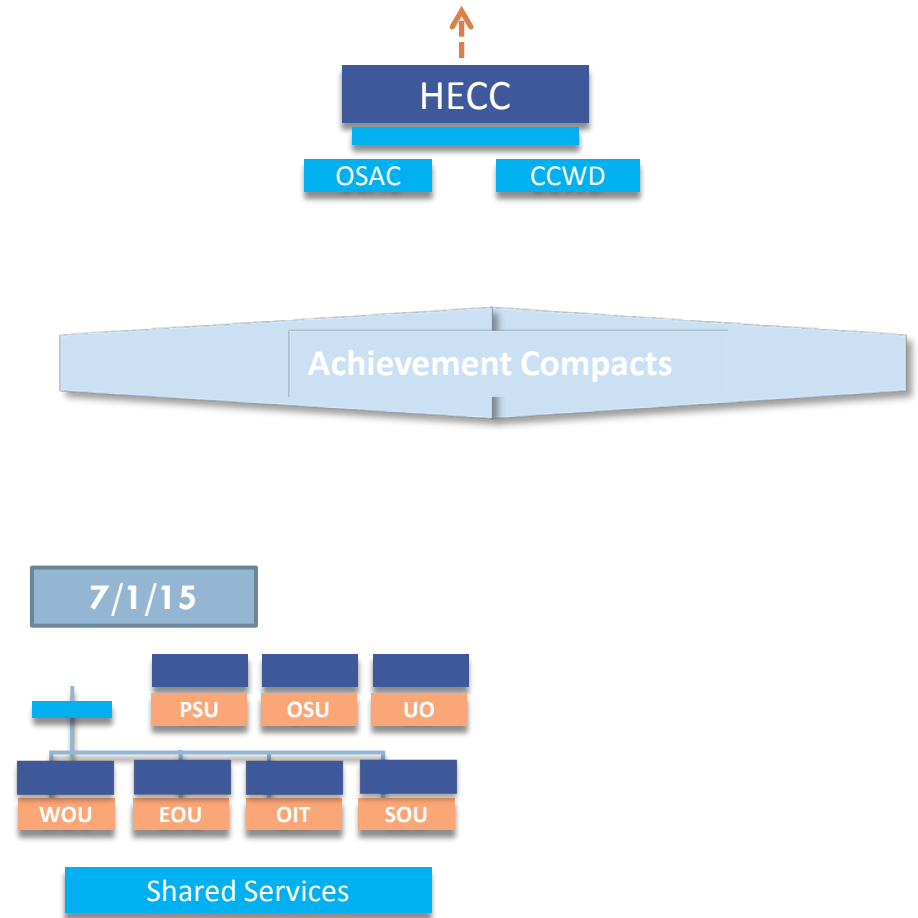
 - ❑ Coordinated Staff Development between Early Childhood providers and K-12 including
 - ❑ Coordinated standards
 - ❑ Literacy pedagogy
 - ❑ Self regulation pedagogy

 - ❑ Systematic support

Postsecondary Before 2013



Postsecondary Post 2013



Coordination and Connections

- ❑ Community Colleges, Universities and Financial Aid in Single Agency
- ❑ Grades 10-14 Connected Via Higher Education Coordinating Commission and (OEIB)
- ❑ OEIB Agency Staff Intersect Silos

Streamlining and Clarity

- ❑ From 4 Boards to 1
- ❑ Clarity of Roles
- ❑ Single Postsecondary Agency
- ❑ Free up Resources for Teaching & Learning