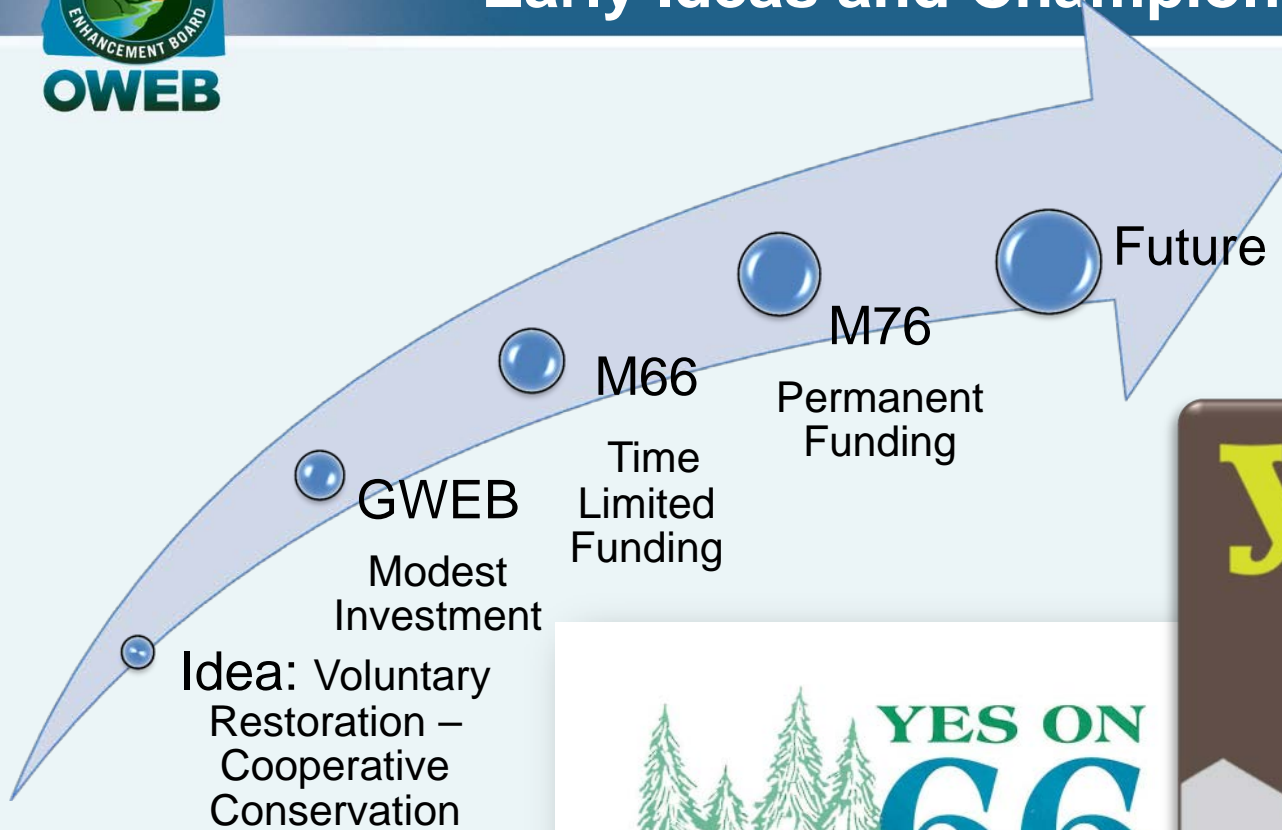


No matter where you live in Oregon,
you're in a watershed.

Oregon's Unique Approach to Watershed Health



Early Ideas and Champions





OWEB Mission

To help protect and restore healthy watersheds and natural habitats that support thriving communities and strong economies.



Strategic Plan Goals

Adaptive Investment - Restore and sustain resilient ecosystems through program and project investments that enhance watershed and ecosystem functions and processes and support community needs.

Local Infrastructure Development - Support an enduring, high-capacity local infrastructure for conducting watershed and habitat restoration and conservation

Public Awareness and Involvement - Provide information to help Oregonians understand the need for and engage in activities that support healthy watersheds

Partnership Development - Build and maintain strong partnerships with local, state, tribal and federal agencies, nonprofit organizations and private landowners for watershed and habitat restoration and conservation

Efficient and Accountable Administration - Ensure efficient and accountable administration of all investments



Long-Term Investment Strategy

Operating Capacity

OWEB supports the operating costs of effective watershed councils and Soil and Water Conservation Districts

Open Solicitation

OWEB offers responsive grants across the state for competitive proposals based on local ecological priorities

Focused Investments

OWEB helps landscape-scale collaborative partnerships achieve prioritized ecological outcomes

Effectiveness Monitoring

OWEB evaluates and reports on the progress and outcomes of watershed work it supports

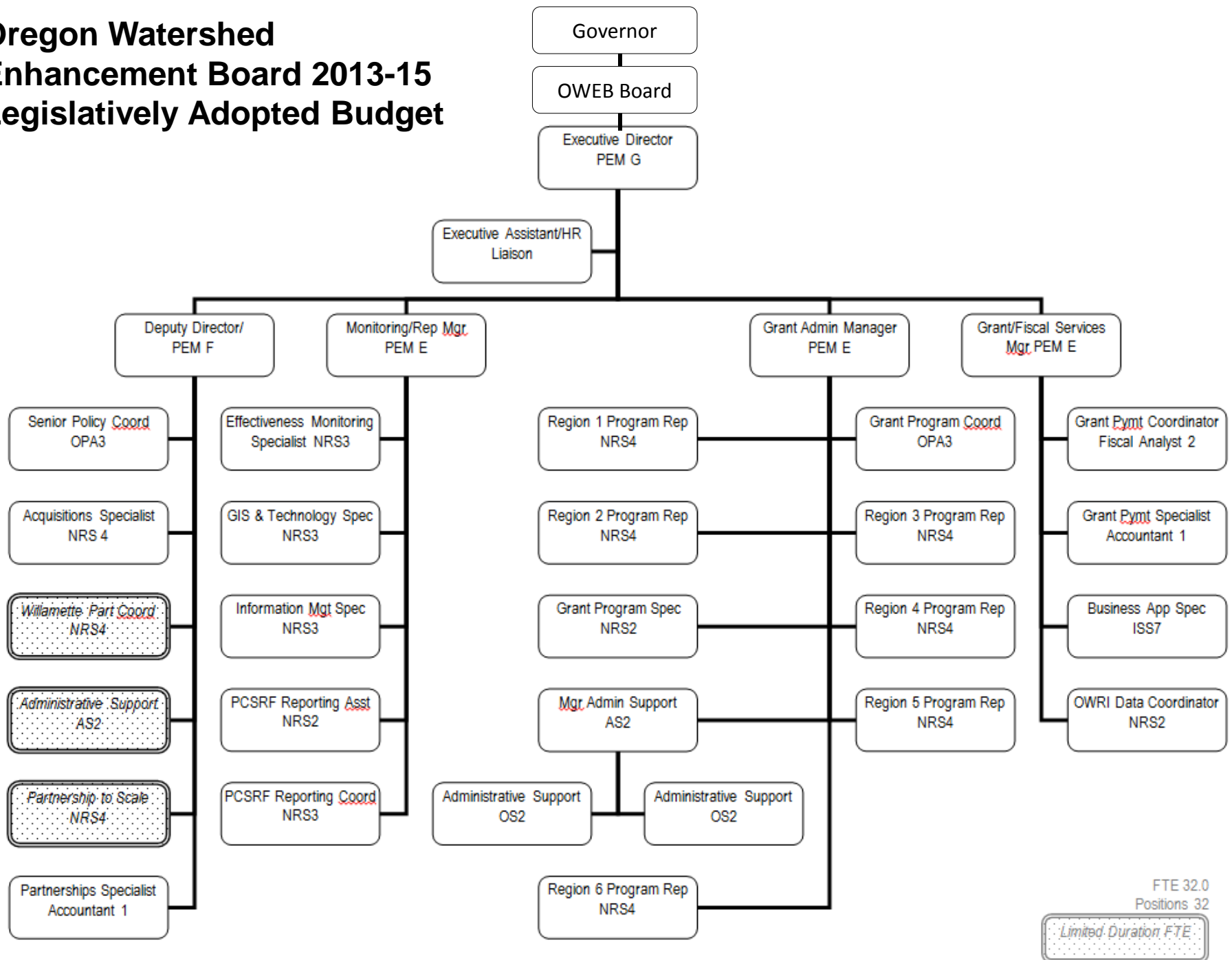


Program Areas

Grant Program supports local community organizations to implement, track and monitor science-based projects to restore land, water and fish and wildlife habitat, and provide Oregon jobs

Operations supports delivery of grants that support local community organizations

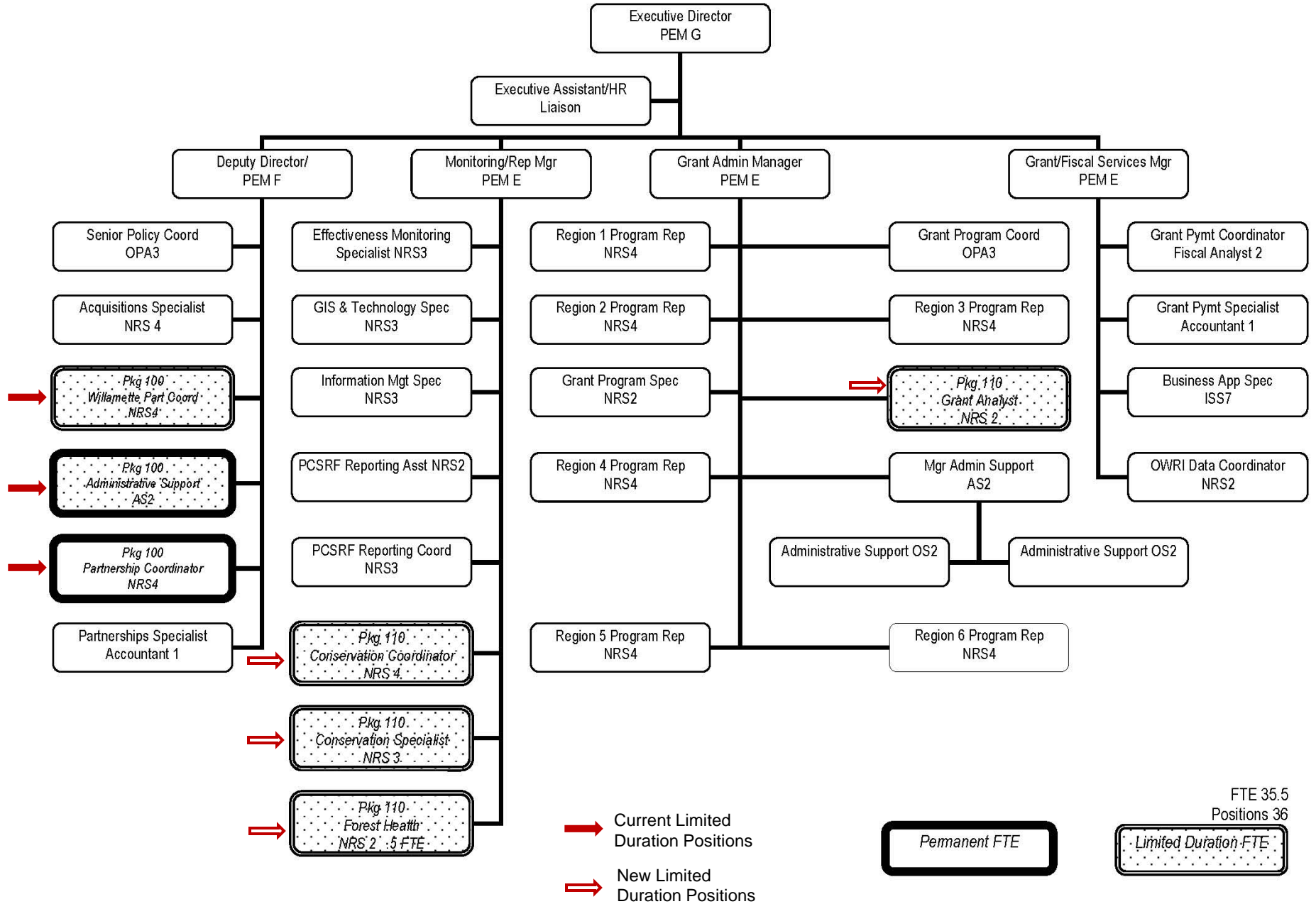
Oregon Watershed Enhancement Board 2013-15 Legislatively Adopted Budget



FTE 32.0
Positions 32

Limited Duration FTE

Oregon Watershed Enhancement Board 2015-2017 Governor's Budget





Target Groups

OWEB grant investments are made through:

- Watershed Councils
- Soil and Water Conservation Districts
- Land Trusts
- Cities, Counties and the University System
- Tribes
- Other Non-Government Organizations
- Landowners



OWEB

Program Delivery

OWEB

- Solicits for grants and completes reviews in partnership with other agencies
- Manages grant program
- Implements effectiveness monitoring programs
- Develops effective partnerships to leverage resources at the regional/state level

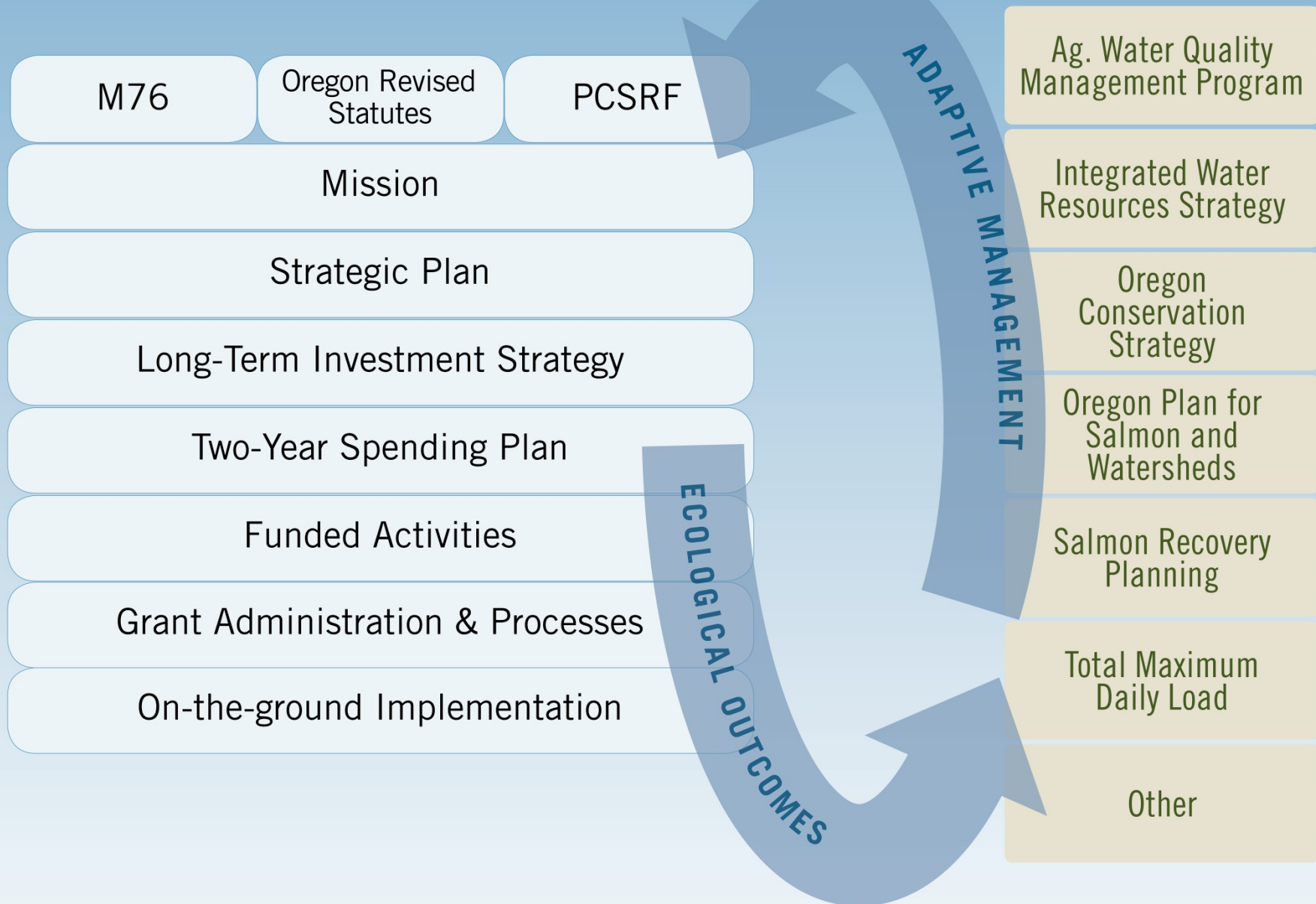
Local Restoration Partners

- Implement restoration projects on the ground
- Provide outreach
- Monitor project success
- Develop effective partnerships to leverage resources at the local level

Landowners and Communities

- Commit to voluntary conservation work on their land
- Invest in the local restoration economy

Elevations of Influence



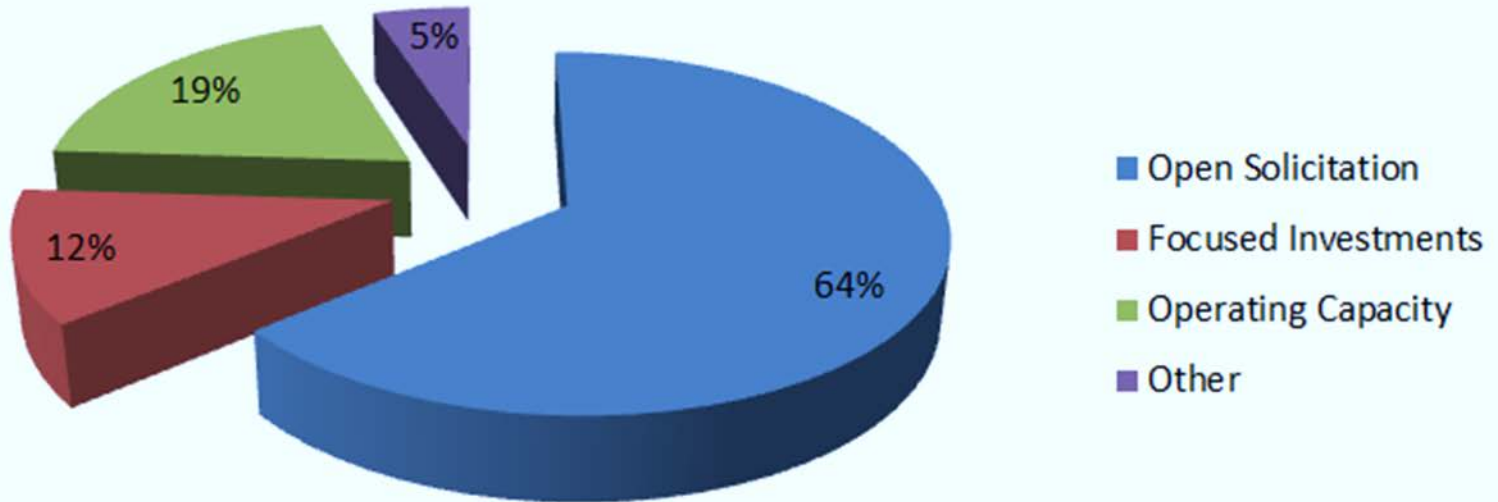


Spending Plan

OWEB's Board **oversees grant investments** through a **spending plan** approved each biennium and updated as additional funds become available or forecasts change



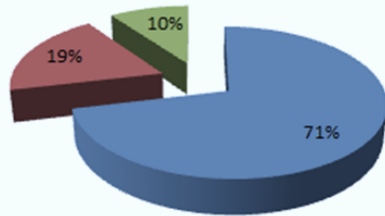
2011-2013 Expenditures - LTIS



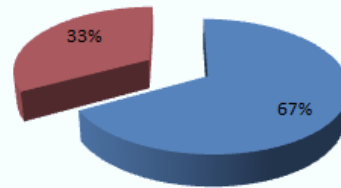


2011-2013 Expenditures

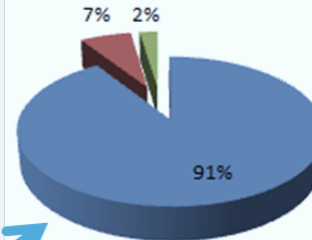
Technical Assistance



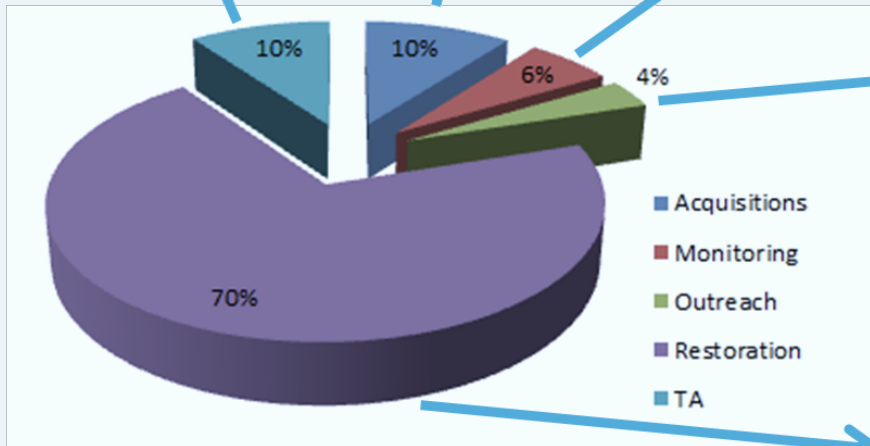
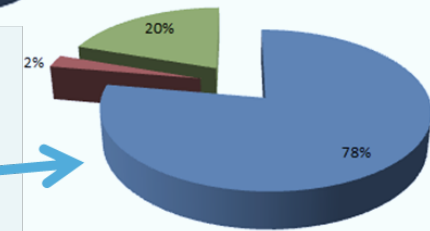
Acquisitions



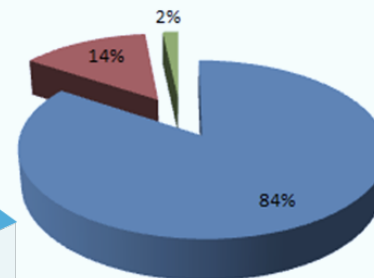
Monitoring



Outreach



Restoration



■ Open Solicitation
 ■ Focused Investment
 ■ Other

■ Acquisitions
■ Monitoring
■ Outreach
■ Restoration
■ TA



Agency Caseload

Currently...

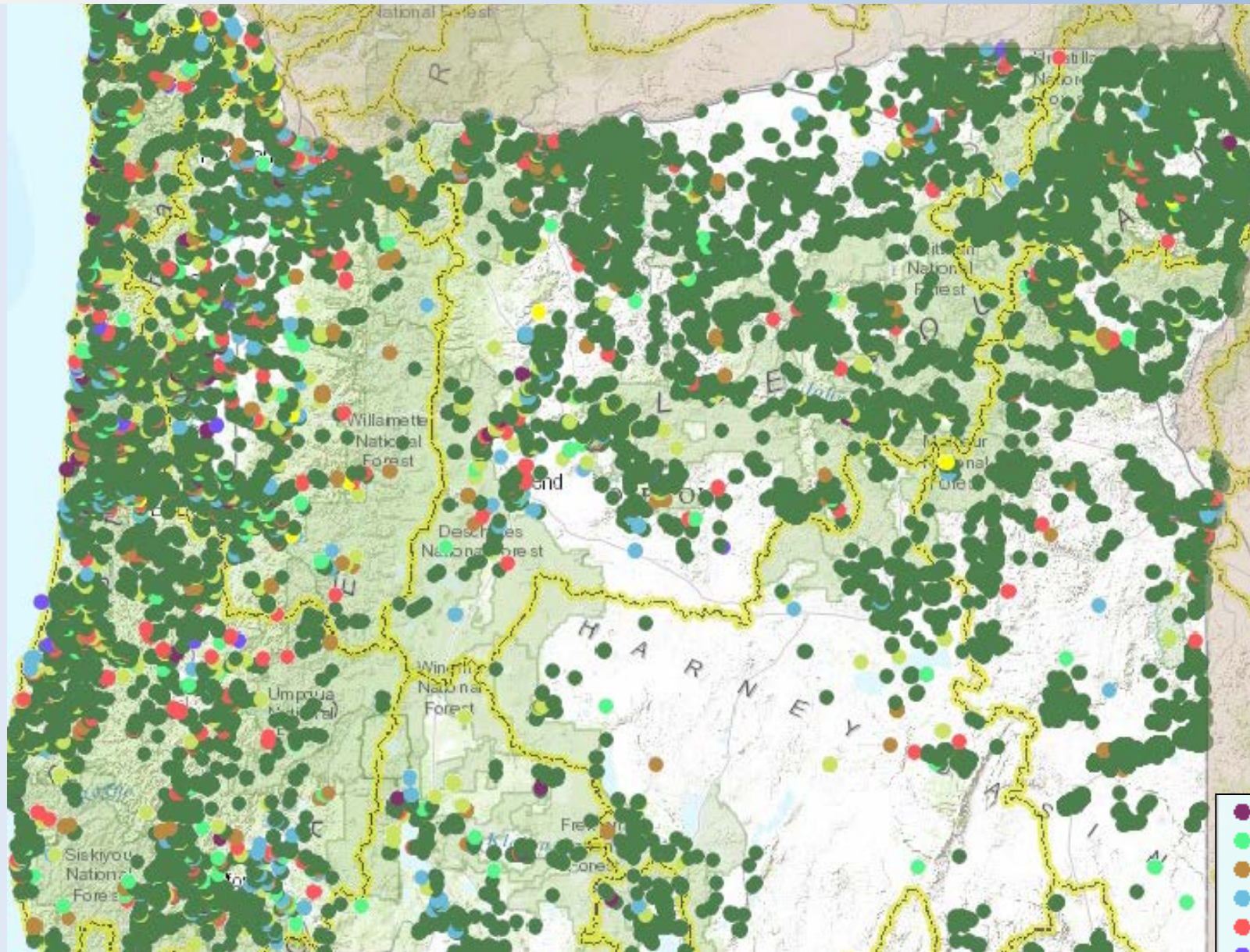
...1,200 open grant agreements with a balance of approximately \$62 million

...1,337 combined applications reviewed and grant agreements executed in this biennium.*

...Applications received total \$56.4 million in requests to date*

* With three of four grant cycles completed for the biennium

OWEB Grant Investments Since 1999



- Acquisition
- Assessment
- Council Support
- Education
- Monitoring
- Research
- Restoration
- Technical Assistance



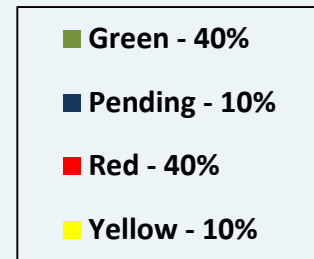
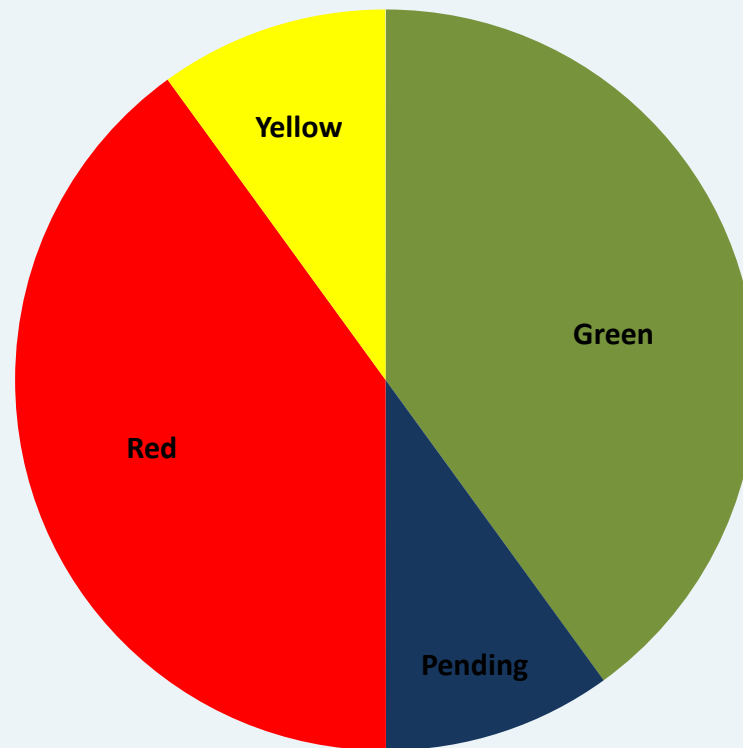
Key Performance Measures

Operations	Plant Communities
Outside Funding	Work Plans
Restoration	Fish Monitoring
Payments	Salmon Habitat Quantity
Fish Populations	Customer Service



Summary of Performance Measures

Summary Results-10 KPMs



Green
= Target to -5%

Yellow
= Target -6% to -15%

Red
=Target > -15%



Key Performance Measures

Review of KPMs

Board will undertake a review of KPMs and propose adjustments if necessary in advance of 2017 Legislative Session



Budget Drivers & Environmental Factors

Fund Sources

- Lottery Fund Revenue Projections
- Competitive Grant Process for federal funds
- Limitations on use of funds

Investment in new granting programs that support thriving communities

- Forest Health Collaboratives
- Working Forests and Farms

Granting Efficiency

- 1,200 open grants
- 12% administration for grant program delivery
- Reliance on other agencies to provide technical support (M76 funds)



Long-Term Investment Strategy

Operating Capacity

OWEB supports the operating costs of effective watershed councils and Soil and Water Conservation Districts

Open Solicitation

OWEB offers responsive grants across the state for competitive proposals based on local ecological priorities

Focused Investments

OWEB helps landscape-scale collaborative partnerships achieve prioritized ecological outcomes

Effectiveness Monitoring

OWEB evaluates and reports on the progress and outcomes of watershed work it supports



Containing Costs and Improving Services



Cross-Agency Approach

Board Structure

Public Members, Tribal, other agency commission members, federal agencies and OSU Extension

Funding to Support Voluntary Local Restoration

M76 funding supports other agency staff to implement M76

Grant Review Team Structure

Other agency staff participate on regional review teams

Staff Coordination with Other Agencies

Engage with other agencies in planning and implementation

Clean Water Partnership

Outcome-based Monitoring

Shared Services (WRD, Housing, DSL)

Administrative functions (ex. payroll, accounting, HR, IT, Internet)



Grant Delivery Services

Oregon Department of Agriculture

Soil and Water Conservation District Capacity Grants

Weed Grant Program

Oregon Department of Forestry

Forest Health Collaborative Grants

Working Forests and Farms

Multi-Agency Implementation Team

US Department of Agriculture

Conservation Reserve Enhancement Program

US Fish and Wildlife Service

Coastal Wetland Grants

Oregon Coastal Management Program

Grants and Reporting to Complement DLCD Program

NOAA-Fisheries

Pacific Coast Salmon Recovery Funding



Continuous Improvement

Continuous Improvement

Staff-led approach to ensure adaptive, human-centered, and high performance service

Technology Focused

Testing new approaches for grant applications, GIS-based information, easy access to grant investments

Improving Local Capacity

Outcome-based grants support effective watershed councils, contain high standards for eligibility, reporting and accountability, and encourage strategic collaboration



Strong Partnerships

Program	Focus	OWEB Investment	Other Funders	Other Funder Investment
Whole Watershed Restoration Initiative	Restoration of salmon habitat at the watershed scale	\$3 million	EcoTrust, NOAA, USFS, USFWS, BLM, NRCS, local restoration partners	\$4.3 million
Deschutes Special Investment Partnership	Fish habitat, stream-flow and riparian restoration	\$15 million	Bonneville Environmental Foundation, Pelton General Fund, Pelton Water Fund, National Fish and Wildlife Foundation, local conservation organizations	\$27.6 million
Willamette Special Investment Partnership	Native fish habitat restoration in the Willamette Basin	\$12 million	Meyer Memorial Trust, Bonneville Environmental Foundation, BPA, ODFW, local conservation organizations	\$33 million
Klamath Special Investment Partnership	Fish habitat, stream-flow and riparian habitat restoration	\$1.2 million	National Fish and Wildlife Foundation, USFWS, NRCS, Tribes, local conservation organizations	\$6.2 million



What We've Learned

High performing partnerships

+

Strategic Action Plans

+

Targeted ecological outcomes

=

Landscape-scale results



Working Forests and Farms

\$45.6 million for the Working Farms and Forests Initiative – a series of voluntary programs to maintain working farms and forests, while also supporting conservation efforts (including work to address the proposed listing of sage-grouse in eastern Oregon).

OWEB budget components:

- \$2.351 million for Federal Forest Collaborative grants (transfer from ODF)
- \$15 million for conservation easements and long term agreements (SB 204)



Clean Water Partnership

\$6.3 million for the Clean Water Partnership – a coordinated multi-agency effort to improve water quality by targeting programs to where they will make the most difference and by encouraging market-based solutions to water quality problems

OWEB Budget component: \$386,980 for two Outcome-Based Monitoring positions (Program Enhancement Package)



Key Policy Option Packages

- 100 Program Continuity** – requests continuation of three limited duration positions for focused investment partnerships and technical support
- 110 Program Enhancement** – requests 3.5 FTE including outcome monitoring for Clean Water Partnership, Federal Forest Health Collaboratives, and Grant Program coordination; and defunds IMST
- 200 Measure 76** – Grant Funds
- 220 Forest Health** – Grant Funds
- 502 Working Forest and Farms** – Grant Funds



Potential Budget Adjustments

Agency-wide Position Description Review

May result in classification or other changes with potential budget impact

Salmon License Plate Revenues

Proposing staffing shifts to Lottery Revenues

Federal Funds Limitation

Working with LFO to determine if there is a need for additional Federal Funds Limitation for 2015-17 *Natl. Coastal Wetlands Conservation Grants*

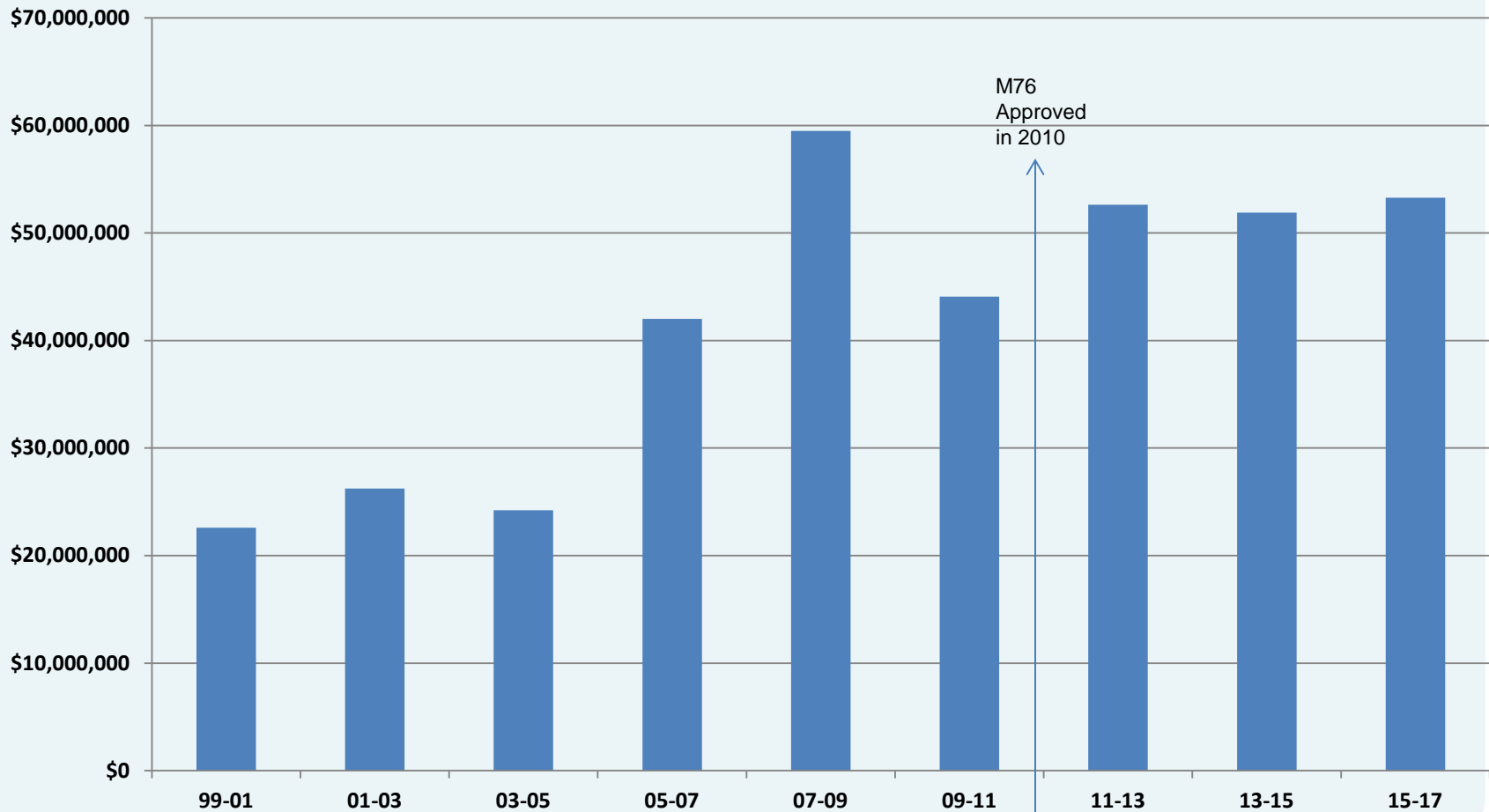
OWEB was awarded 3 grants totaling \$2.63 million:

1. Scholfield Creek Acquisition,
2. Kilchis Acquisition and
3. China Camp Creek Restoration



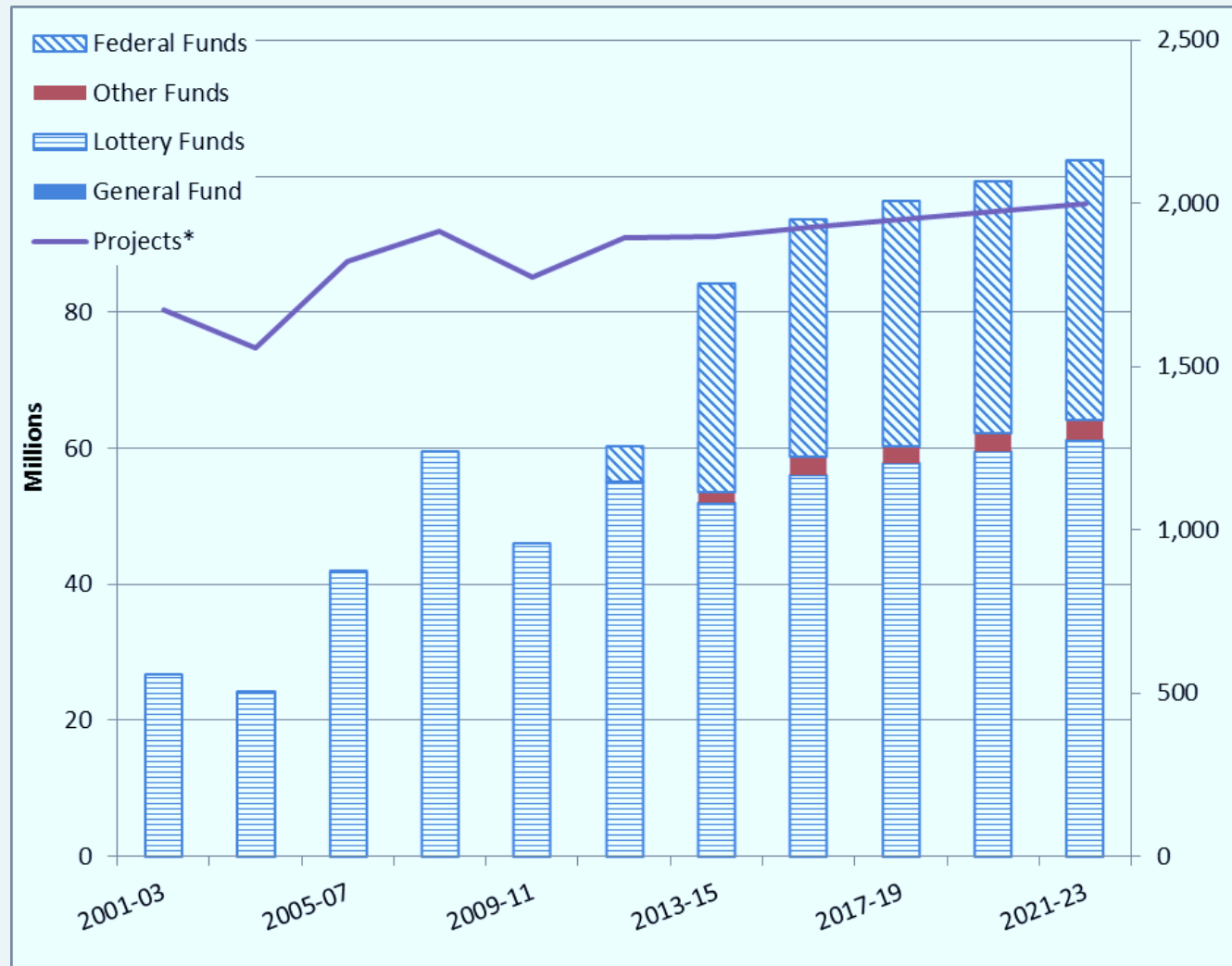
Agency Changes

M66 Capital and M76 65% Grants





Agency Changes



*Applications Reviewed and agreements executed



Legislation Affecting OWEB Operations

SB 202 IMST Reform

Requires establishment of Oregon Academy of Sciences as nonprofit corporation to serve as principal source of scientific investigation, examination and reporting on scientific questions referred to academy by Governor, Governor's designee or Legislative Assembly...

SB 204 Working Forests and Farms

...Requires Oregon Watershed Enhancement Board to establish program for issuing grants to acquire or conserve working forests and farms dedicated, in part, for achievement of conservation benefits.



How Proposed Budget Impacts Goals

Strategic Plan	LTIS	Budget Proposal
Adaptive Investment	Effectiveness Monitoring Open Solicitation	<ul style="list-style-type: none"> - Increased coordinated monitoring of outcomes (Clean Water Partnership) - Expanded grant offerings that support thriving communities (WFF, Forest Health)
Local Infrastructure Development	Operating Capacity	<ul style="list-style-type: none"> - Increased support for Forest Health Collaboratives
Public Awareness and Involvement	All areas of LTIS	<ul style="list-style-type: none"> - Website and outreach support
Partnership Development	Focused Investments	<ul style="list-style-type: none"> - Continued partnership coordination
Efficient and Accountable Administration	All areas of LTIS	<ul style="list-style-type: none"> - Continued support for effective and transparent granting



10% Reduction Options

ACTIVIY OR PROGRAM	DESCRIBE REDUCTION	AMOUNT & FUND TYPE*	RANK
First Five Percent			
Operations	Reduce IT equipment replacement	(\$8,924) LF	1
IMST	Eliminate IMST	(\$237,826) LF (\$237,608) FF (PCSRF)	2
Grants	Reduce funds available for grants	(\$916,732) FF (PCSRF) (\$77,603) OF (misc)	3
Operations	Fund shift .38 FTE (9mos) Region 1 RPR (9900011) from LF to FF (PCSRF direct)	(\$91,019) LF \$91,019 FF (PCSRF)	4
Second Five Percent			
Operations	Reduce office supplies	(\$6,163) LF	5
Grants	Reduce funds available for grants	(\$1,155,293) FF (PCSRF) (\$243,045) OF (misc)	6
Operations	Fund shift .84 FTE (20mos) Region 6 RPR (9909006) from LF to OF	(\$165,442) LF \$165,442 OF	7
Operations	Fund shift ½ FTE Effectiveness Monitoring (9900010) from LF to FF (PCSRF direct)	(\$86,289) LF \$86,289 FF (PCSRF)	8
Operations	Reduce Acct 1 (1311002) to ½ FTE FF (PCSRF indirect) Fund shift Acct 1 (9930002) ½ FTE from LF to FF (PCSRF indirect)	(\$74,192) FF (PCSRF) (\$79,875) LF \$79,875 FF (PCSRF)	9



Achieving Outcomes

Since 1999, OWEB's over 7,400 grant investments (over \$540 million) have helped landowners and communities...

- Restore nearly 4,300 miles of streams
- Make nearly 5,600 miles of stream habitat accessible for fish
- Improve or create over 43,000 acres of wetlands/estuaries.
- Improve the condition of nearly 979,000 upland acres

These investments have resulted in...

- an average of 15-24 jobs per \$1 million invested
- 90 cents of every dollar stays in local communities



Achieving Outcomes

Erosion Control - Conversion to No-Till

Conventional Tillage



No-Till



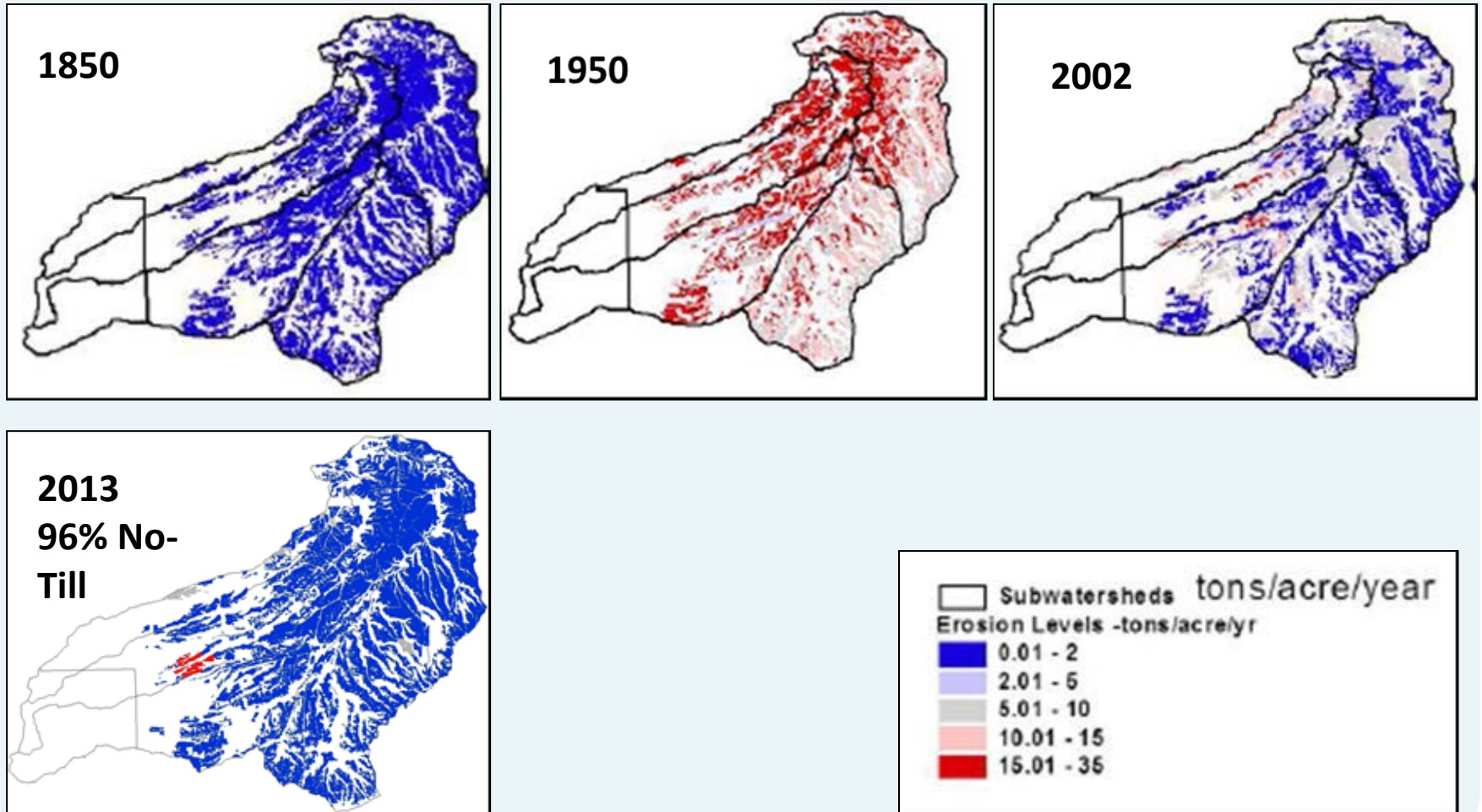
No-Till has significantly reduced cropland erosion and sediment delivery to streams



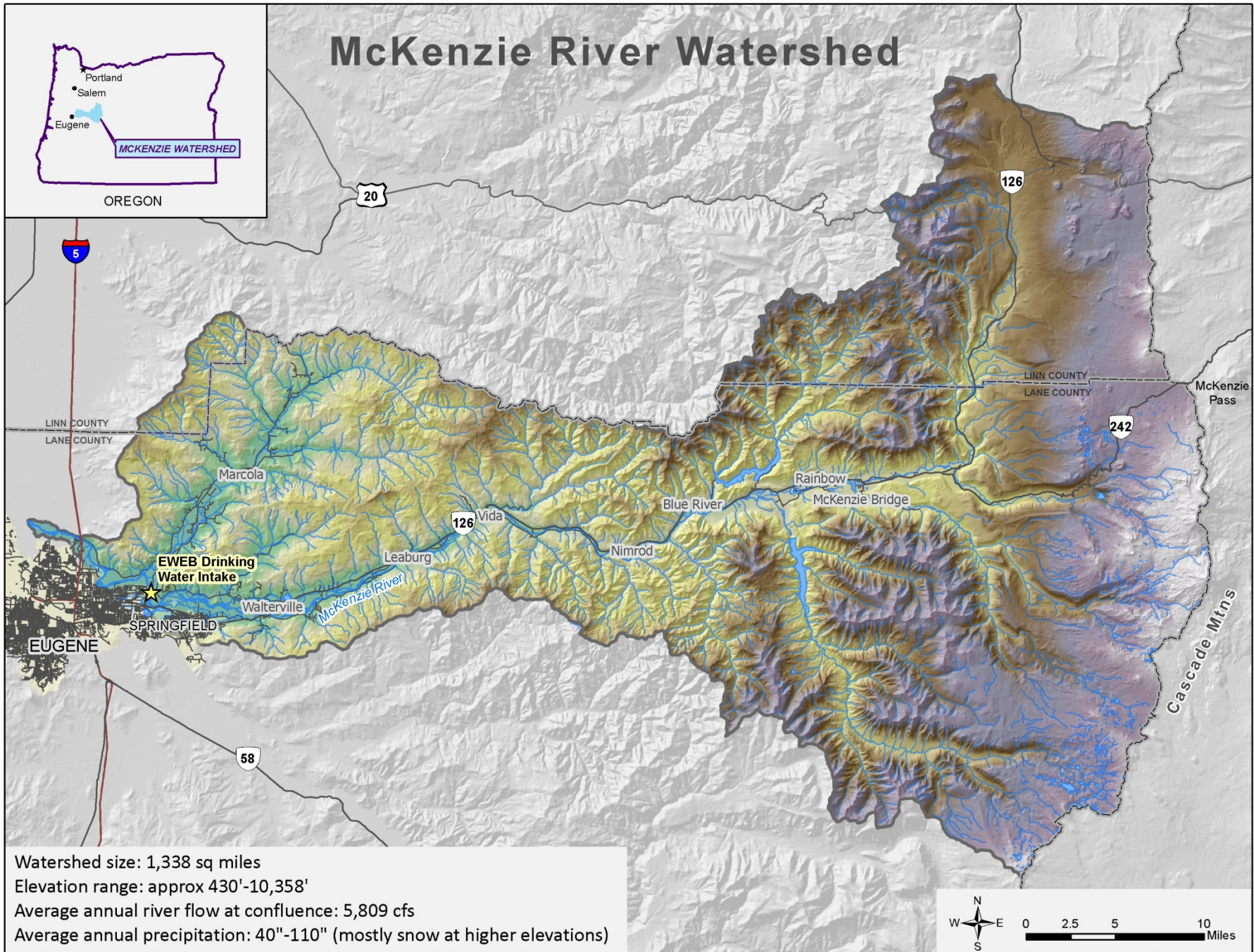
OWEB

Achieving Outcomes

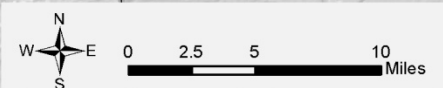
Fifteenmile Creek-Soil Stability Improvements Following BMPs and Restoration



McKenzie River Watershed



Watershed size: 1,338 sq miles
Elevation range: approx 430'-10,358'
Average annual river flow at confluence: 5,809 cfs
Average annual precipitation: 40"-110" (mostly snow at higher elevations)



Map courtesy of EWEB



Achieving Outcomes

Lower Umpqua Watershed In-Stream Habitat Enhancement



Photos courtesy: Matt Rumwaldt, Partnership for Umpqua Rivers



OWEB

Achieving Outcomes



Photos courtesy: Matt Rumwaldt, Partnership for Umpqua Rivers

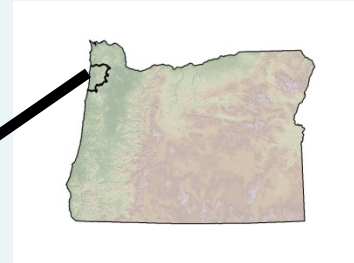
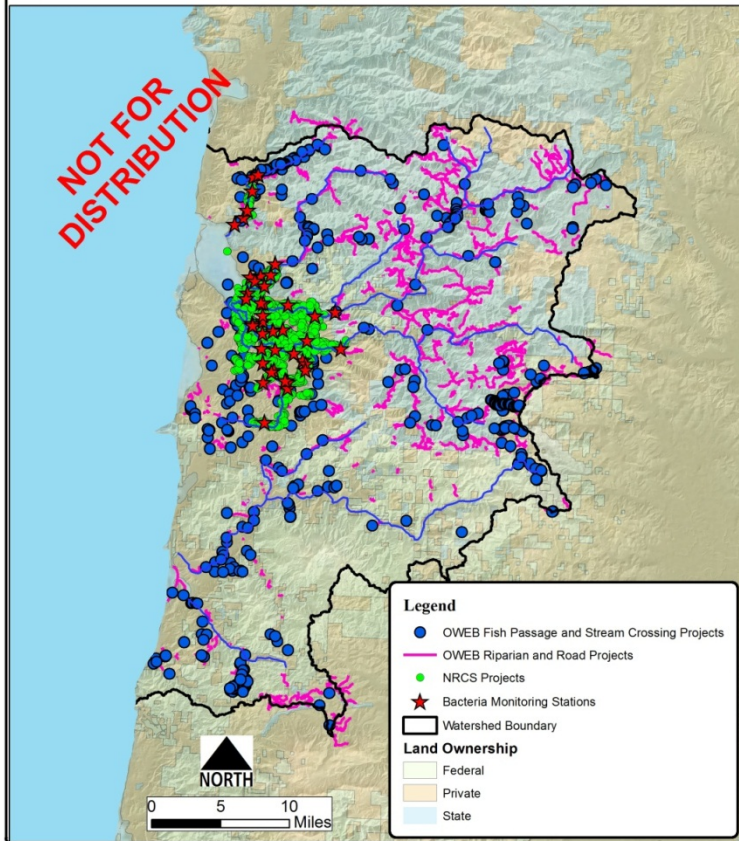


Achieving Outcomes

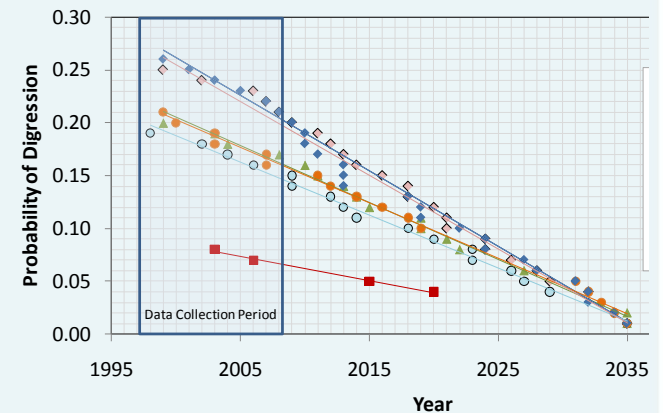
Conservation Effectiveness Partnership



Tillamook Watersheds

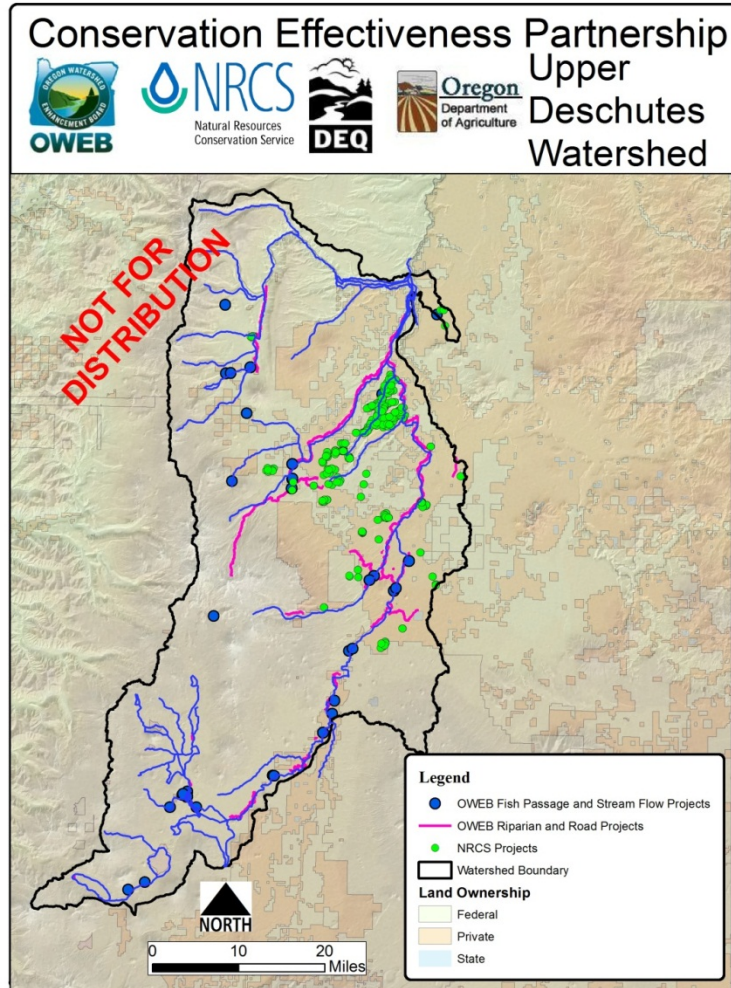


Wilson River: Harmful bacteria decreasing

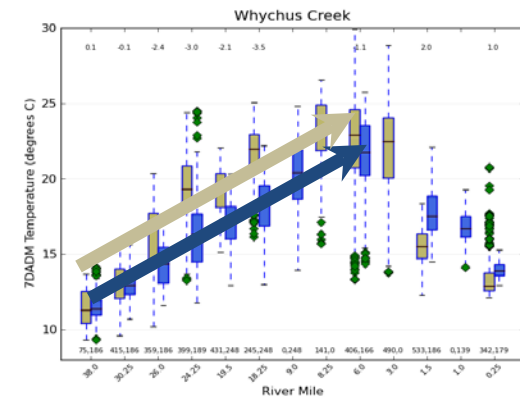




Achieving Outcomes



Whychus Creek:
Stream temperature
decreasing



Before Restoration After



Achieving Outcomes

Sage Grouse Conservation





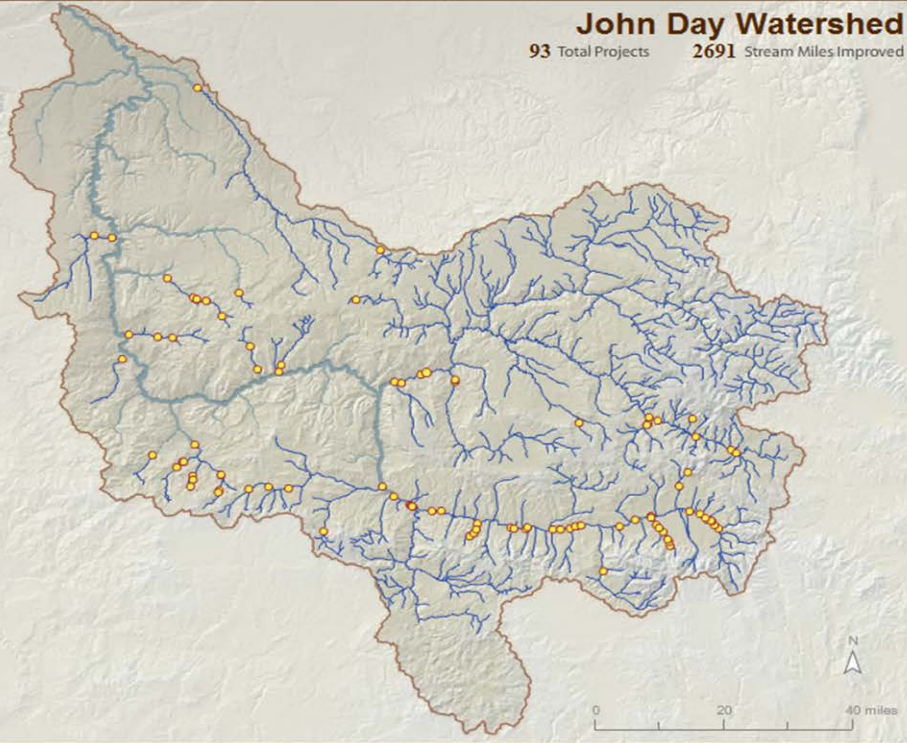
Achieving Outcomes

A Decade of Improving Habitat Access for Fish

In the **John Day River basin**, summer steelhead and bull trout are listed as threatened under the federal Endangered Species Act. However, the John Day River system still has one of the strongest native stocks of summer steelhead in the entire Northwest. The John Day River is the second longest undammed river system in the continental United States, yet, a significant number of irrigation diversions, push-up dams and culverts exist which pose barriers to fish. OWEB grant investments in fish passage projects in the John Day River basin include improvements to irrigation systems and culverts, installing fish screens, and retiring push-up dams.



- Terrain
- Barriers
- Labels
- Project

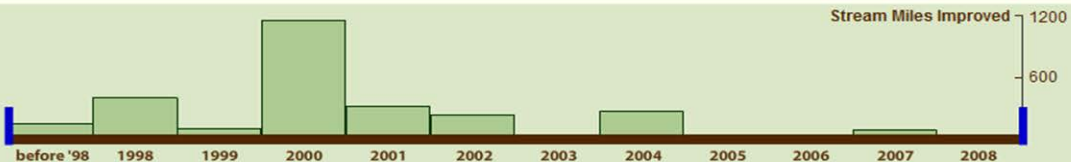


John Day Watershed
 93 Total Projects 2691 Stream Miles Improved

1997 to 2008

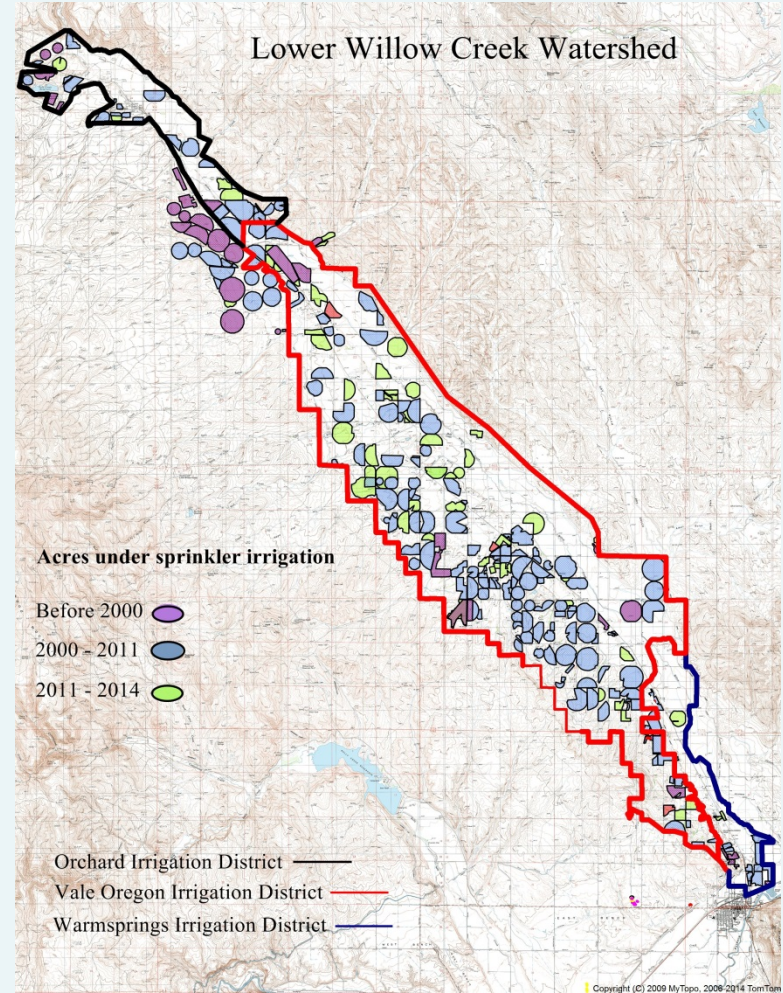
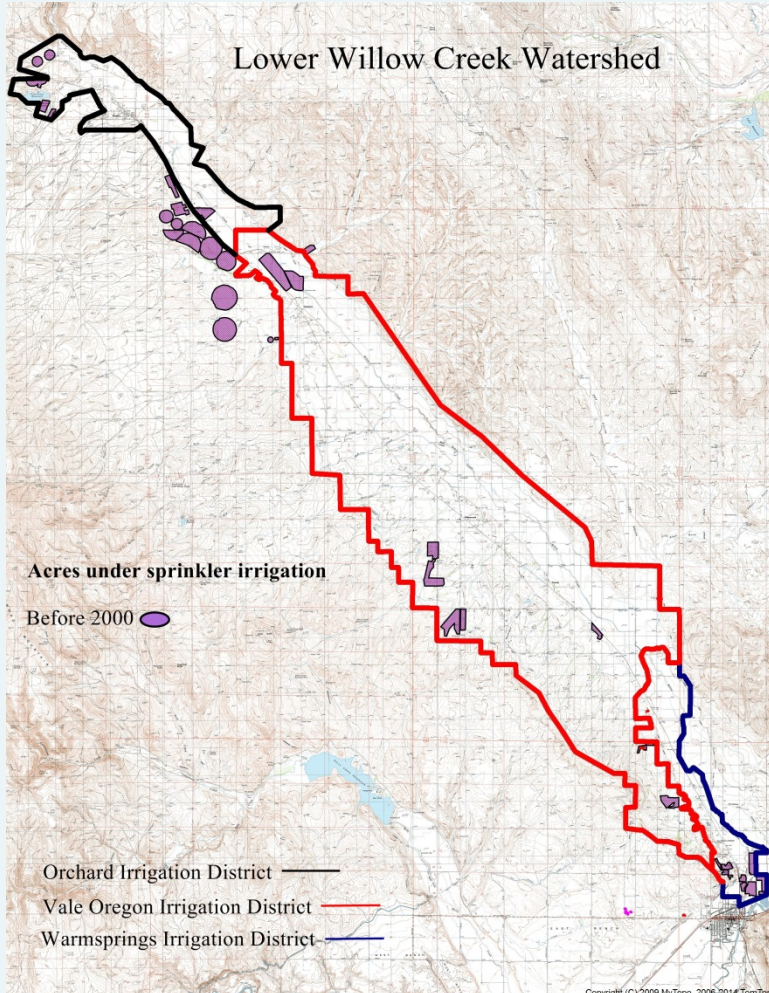
93 Projects
 2691 Stream Miles

2691 miles improved





Achieving Outcomes





Achieving Outcomes



Before

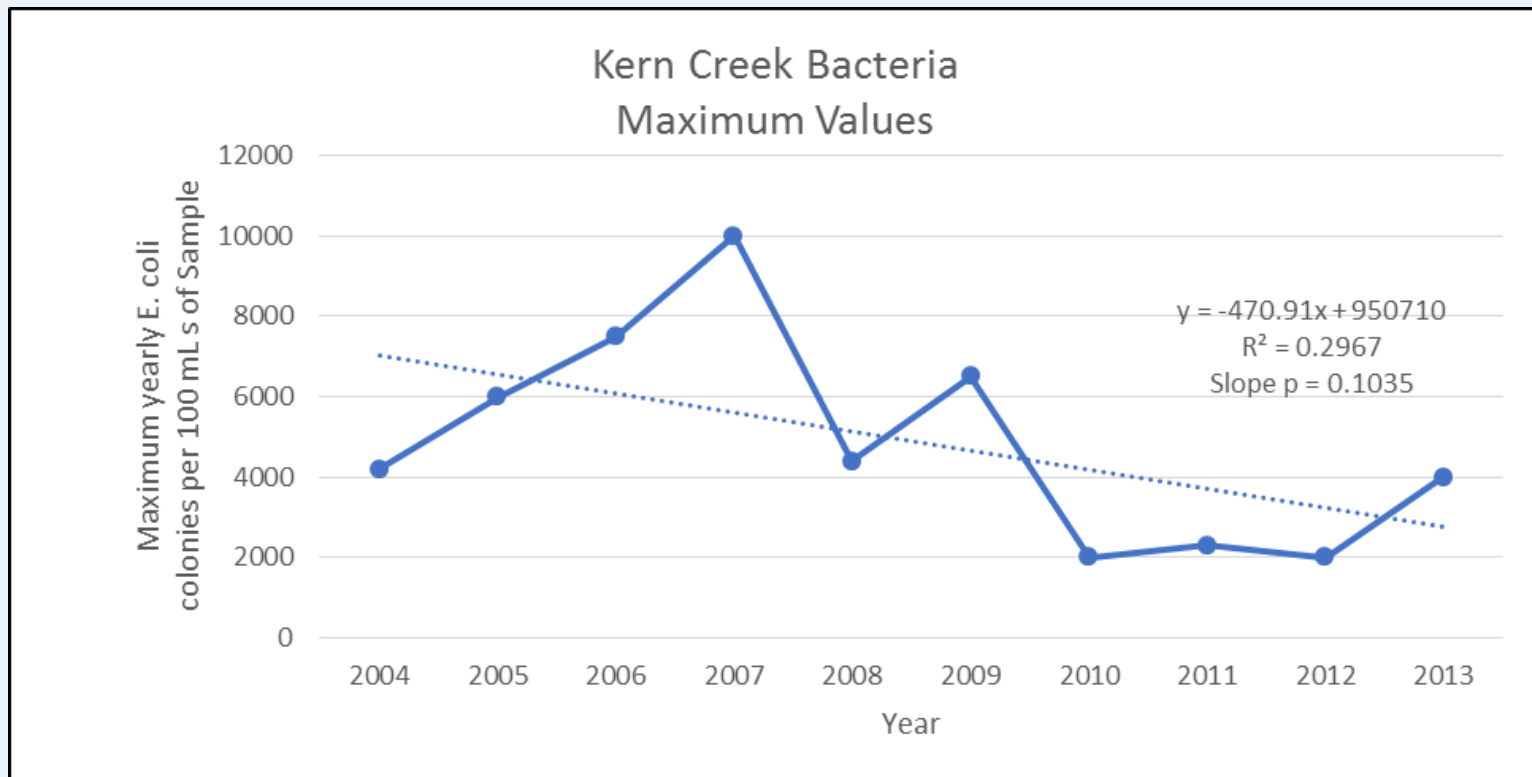


After



Achieving Outcomes

Water Quality Improvements in tributary to Willow Creek, Malheur County





Thank You

