

## Child Welfare Programs

*Erinn Kelley-Siel, DHS Director*

*Jerry Waybrant, Chief Operating Officer, Child Welfare and Self Sufficiency*

*March 18 and 19, 2013*



# Presentation Outline

---

1. Child Welfare Program Mission & Goals
2. Child Welfare Program Response to Abuse/Neglect
3. System Improvement Data
4. 2011-13 Legislative Direction & System Transformation
5. 2013-15 Budget overview
6. Additional issues
7. Summary



# Child Welfare Program Mission and Goals

---

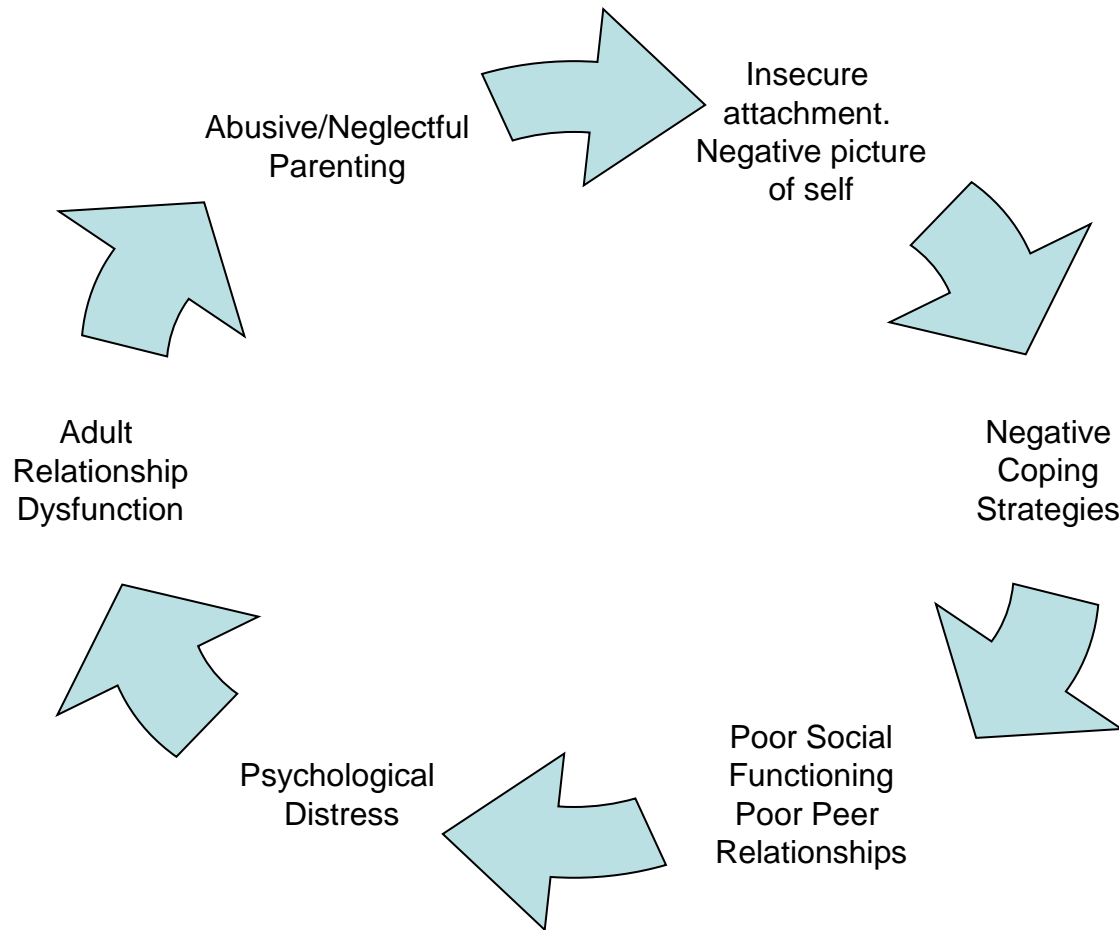
Mission: Improve family capacity to provide safe and permanent living environments for children.

## Goals:

- Protect children and promote children's safety in their homes.
- Help children who are unable to live safely in their homes live in settings that provide safety, stability and continuity with their families.
- Expand program partnerships and increase the cultural competency of DHS staff and partners to better serve Oregon's diverse communities.
- Prevent the current and future need for additional high end services.
- Mitigate trauma

# Impact of Maltreatment throughout Life

---



# Child Welfare is an interdependent system

---



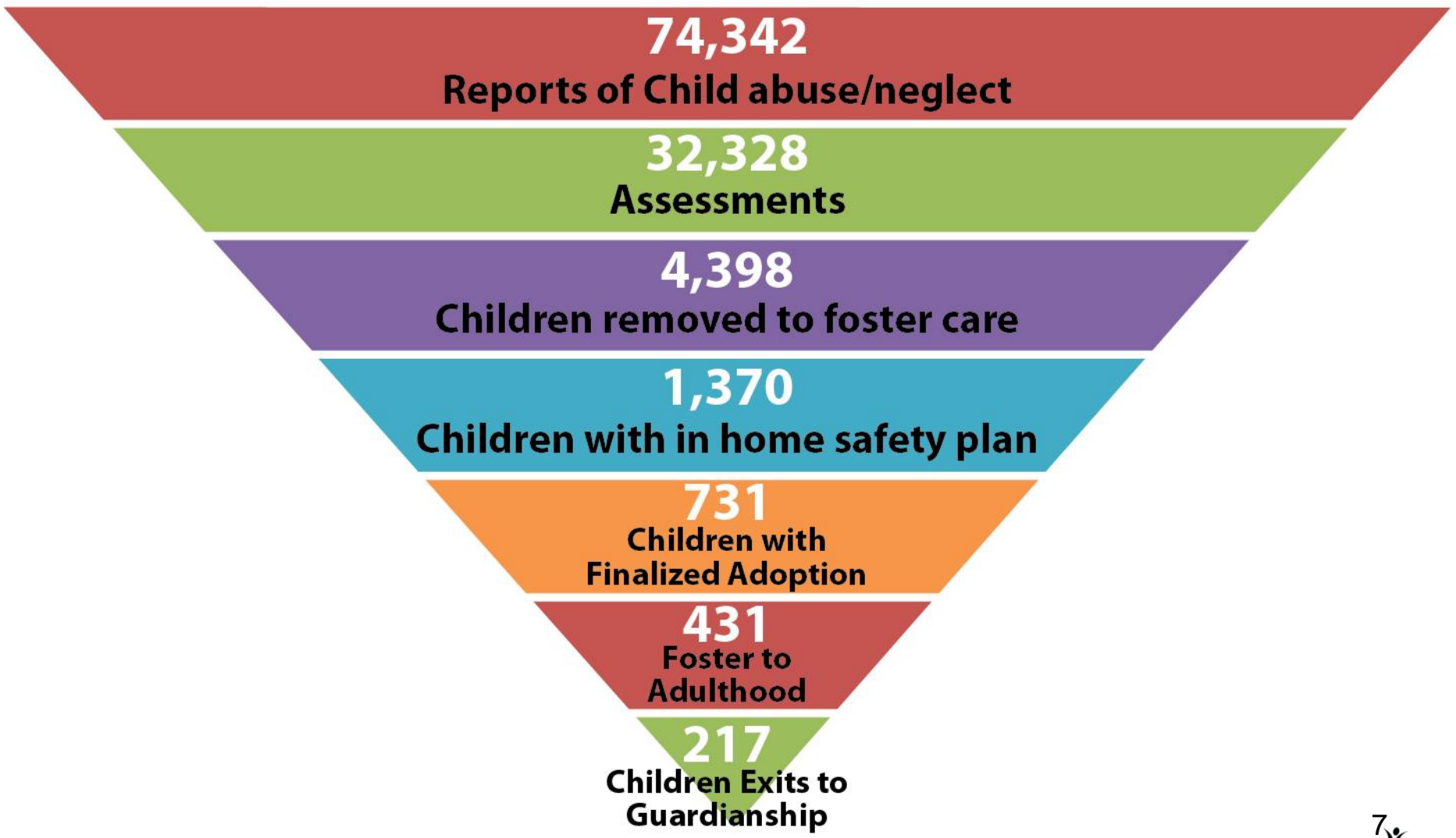
# Child Welfare Programs

---

## **Child Welfare Program Response to Abuse/Neglect**

# Child Welfare Continuum (2011 data)

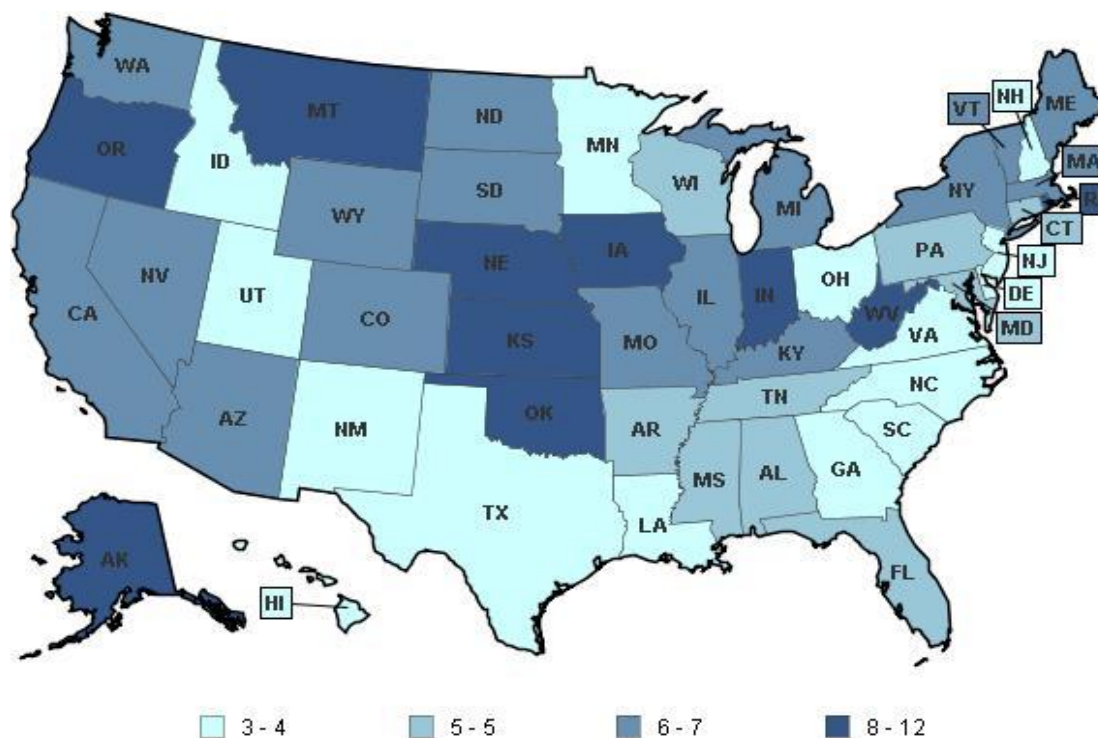
---





# Foster Care Entry Rate

Oregon's statewide entry rate continues to be above the national average.



**Children 0 to 17 in foster care (Rate per 1,000) - 2010**

KIDS COUNT Data Center, [www.kidscount.org/datacenter](http://www.kidscount.org/datacenter)  
A Project of the Annie E. Casey Foundation



## Abuse/Neglect & Foster Care Entry Drivers

---

- Most substantiated child abuse/neglect in Oregon is neglect (31.4%)/“threat of harm” (TOH)(49.6%)
- Statewide, removal rate of children is 35%; removal rate for neglect is 52.4%, removal rate for neglect & TOH 63.6%.
- At 44%, Alcohol and Drug issues were the largest single family stress factor when child abuse/neglect was present; next most common stressors were Domestic violence (33%), and Parental Involvement in Law Enforcement (27%)
- In 2010, approximately 65% of the 8,200 children in child welfare out of home care came from families that would qualify for TANF.
- In the third Quarter of 2010 a total of 1,253 children entered foster care. Of those, 36.6% (or 458) received TANF prior to entering foster care. This percentage is up from 28% in the last Quarter of 2007 and is increasing.

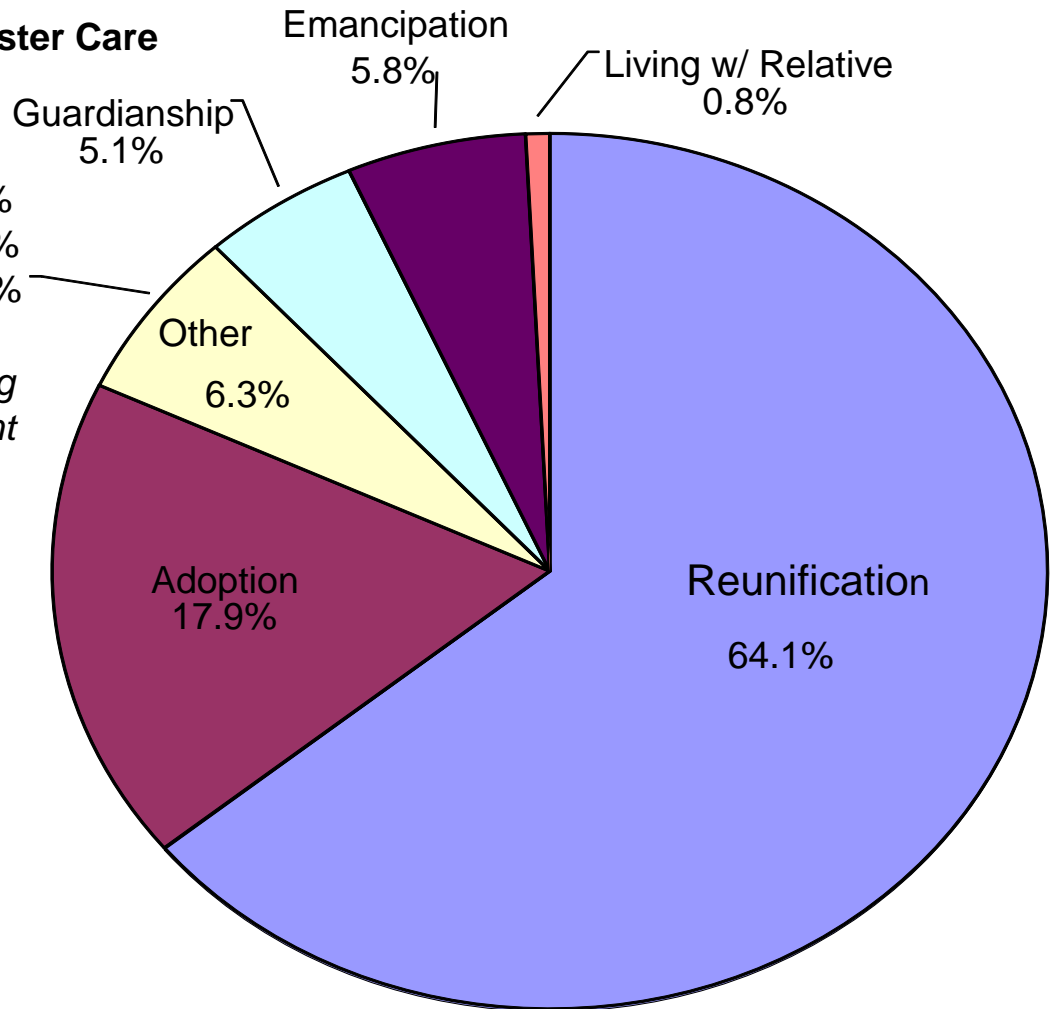
# 2011 Exits From Foster Care

## Where Children Went After Foster Care

### Other

- Transfer to Another Agency 1.2%
- Runaway 2.9%
- \*Other 2.2%

*\*Primarily youth exiting due to being out of compliance with independent Living program rules*

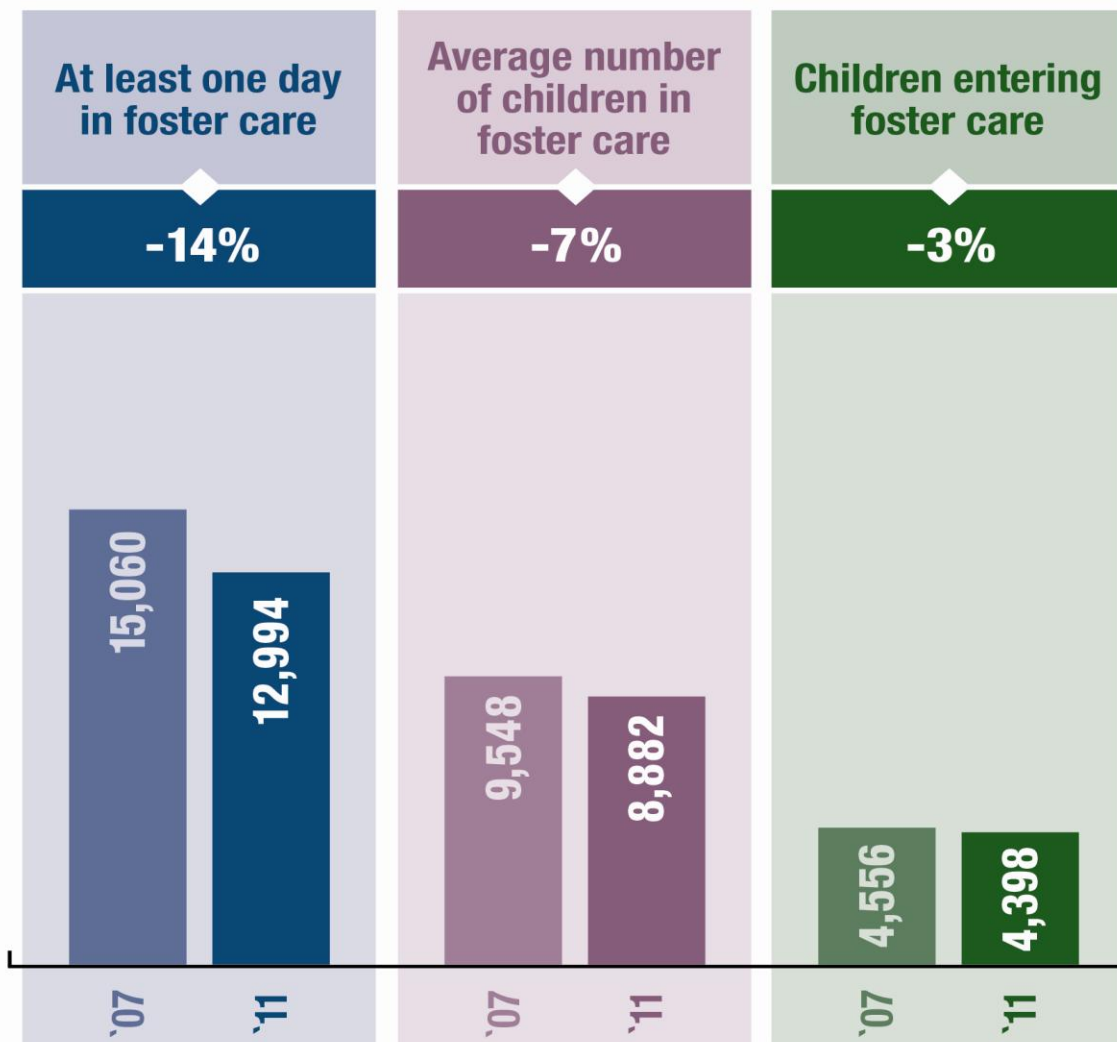


# Child Welfare Programs

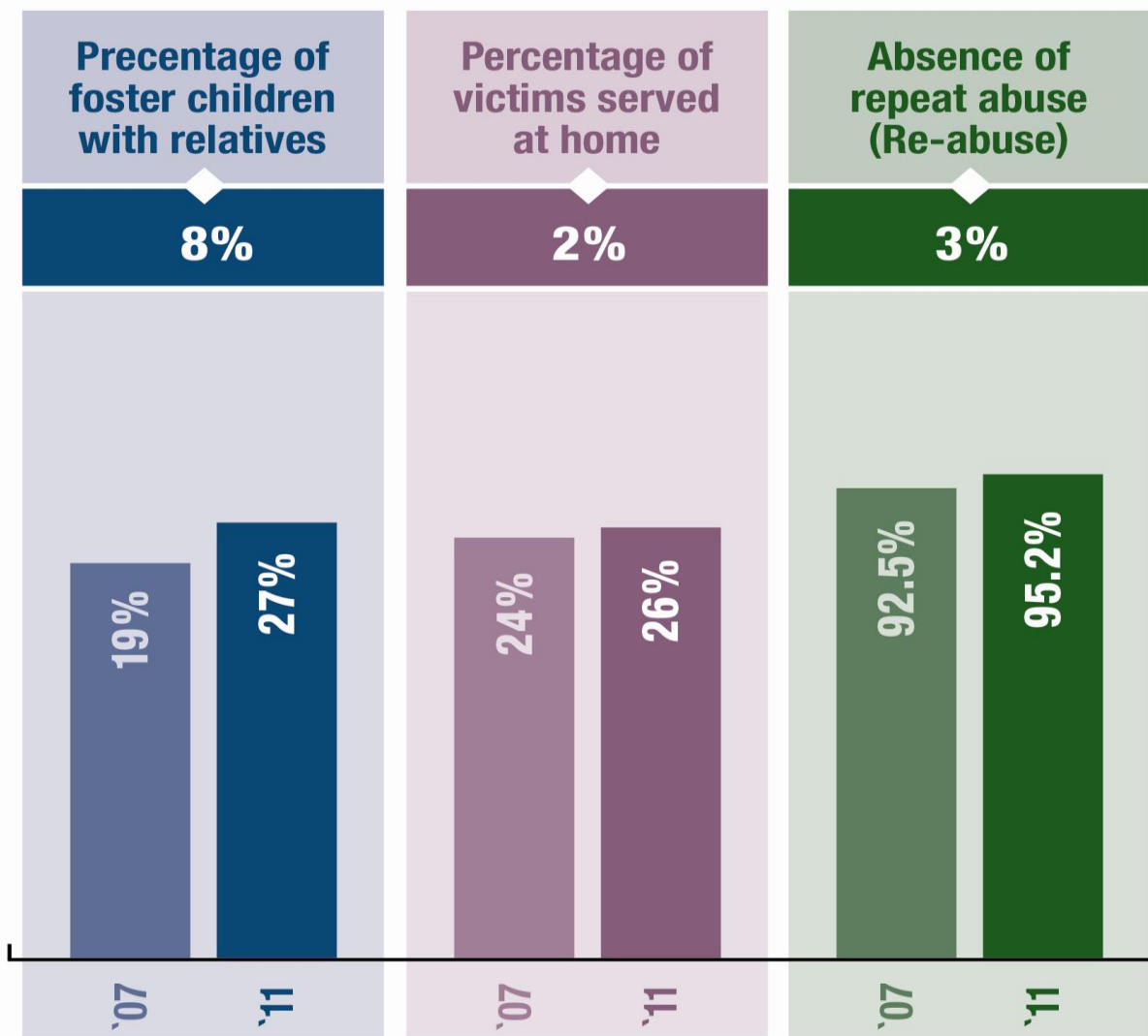
---

## **System Improvement Data**

# Progress Indicators – 2011



## Progress Indicators – 2011



# Equitable Foster Care Reduction: The Numbers

2011 Race Comparison: Oregon Children to Children Served in Foster Care		
Race	% of Oregon's children*	% of children served in foster care
African American	2.1%	8.2%
Asian	3.7%	1.0%
Caucasian	66.9%	64.4%
Hispanic (any race)	20.3%	14.4%
Native American	1.3%	5.9%
Pacific Islander	0.5%	0.6%
Two or more race groups	5.2%	na
Unknown/Not Recorded	na	5.5%

\*2010 Census Population under 18; U.S. Census

Children Served in Foster Care, by Race 2009 - 2011			
Race	2009	2010	2011
African American	8.3%	8.3%	8.2%
Asian	0.9%	1.0%	1.0%
Caucasian	62.5%	64.4%	64.4%
Hispanic (any race)	12.8%	13.7%	14.4%
Native American	8.8%	6.9%	5.9%
Pacific Islander	0.5%	0.5%	0.6%
Unknown/Not Recorded	6.4%	5.1%	5.5%

## Foster Care: Safety, Health, Education, Transitions

---

- Safety: Foster Home Reviews, SAFE home study. Absence of abuse in FC: 99.10%.
- Stability: In 2011, 85% of newly certified families specially certified for specific child(ren); 55% of foster parents now child-specific. 38% kids in care had only one placement.
- Health: In 2008, 20% of children in care prescribed psychotropic medications; in 2010, number down to 14%.
- Education: K-12 grant/collaboration; Tuition Waivers
- Transitions: DMV partnerships, credit reports, YTP



## Progress Indicators Summary - 2011

---

- Number of children entering foster care in 2011 was the lowest in the past 5 years.
- In 2011, 67% of child victims remained safely at home after a founded incident of abuse or neglect.
- The percentage of children leaving foster care to be reunited with their families increased from 63.2% to 64.1%.
- 13 Oregon counties decreased their foster care placement rate in 2011, and 17 Oregon counties reduced their overall foster care population that same year.

# Child Welfare Programs

---

## **2011 Legislative Direction**

## Legislative Direction: 2011

---

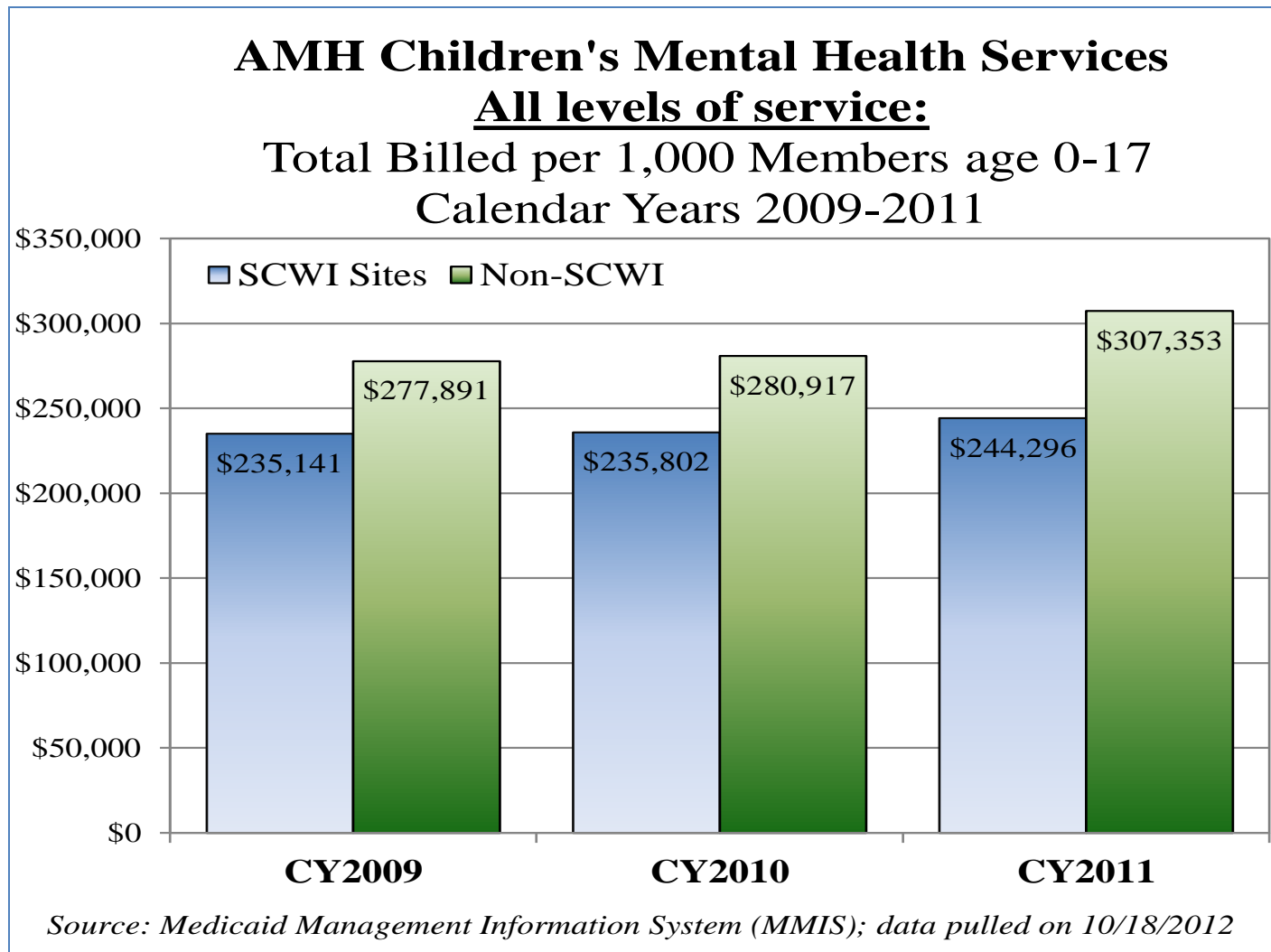
- In Home Safety and Reunification Services
- Intensive Treatment and Recovery Services and Addiction Recovery Teams
- Domestic Violence Advocate Co-Location
- IV-E Waiver – Enhanced Visitation, Parent Mentors

## Legislative Direction: System Transformation

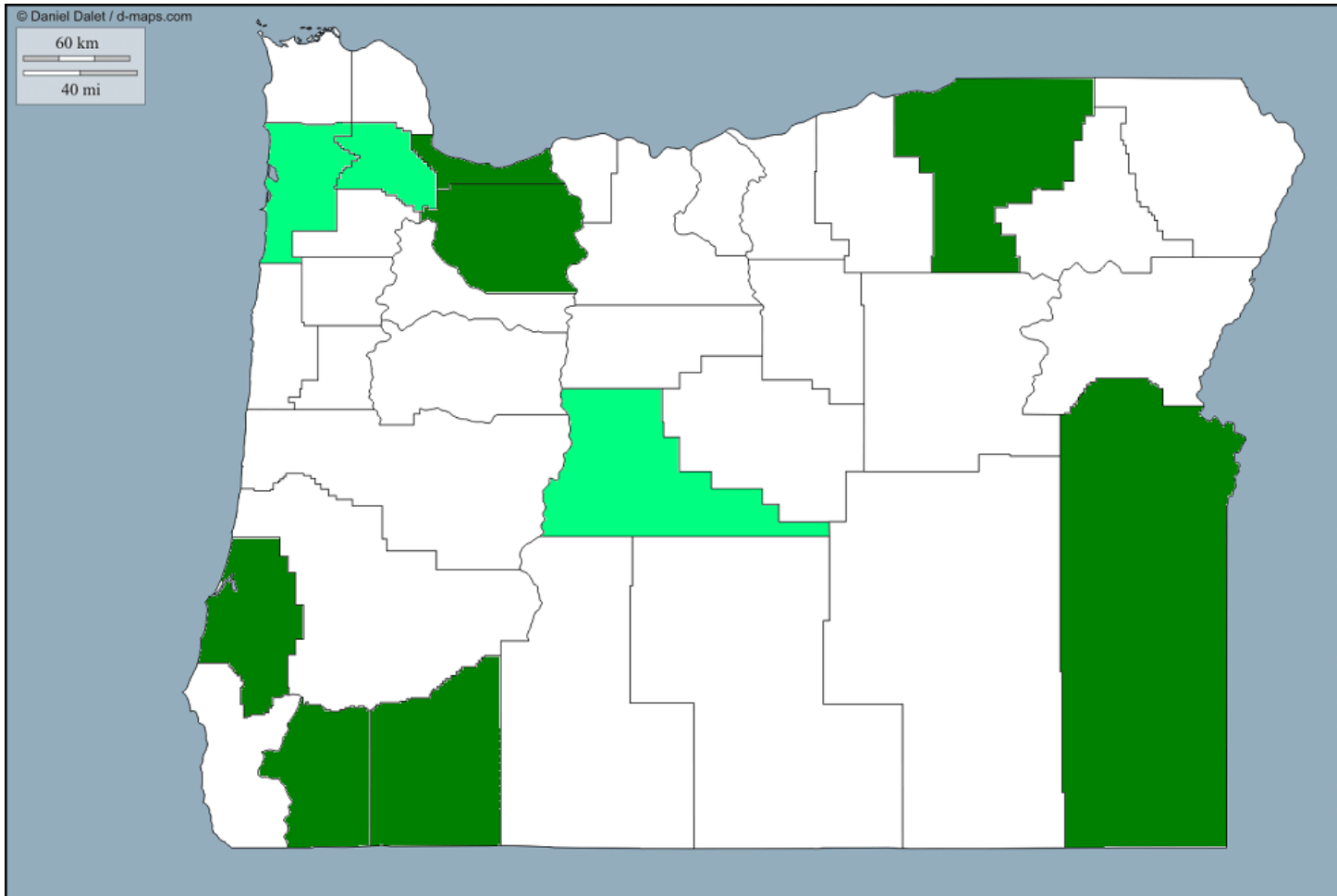
---

- Wraparound/System of Care (HB 2144 (2009))
- SB 964 (2011): Strengthening, Preserving and Reunifying Families
- Differential/Alternative Response Planning
- New IV-E Waiver Application – Federal Financing Reform

# Wraparound/SOC Implementation & Results



# SB 964 Implementation To Date



- ❖ Jackson, Clackamas, Malheur, Multnomah (Alberta), Coos, Josephine and Umatilla
- ❖ Tillamook, Washington and Deschutes

## OR-Kids – Go Live August 2011

---

<b>System Successes</b>	<b>System Challenges</b>
<b>Federal Compliance</b>	<b>Data Conversion</b>
<b>Federal Data Reports</b>	<b>Contract Provider Payments</b>
<b>System Control</b>	<b>System Complexity</b>
<b>System Stability</b>	<b>Workload Impact</b>
<b>Business Process Initiative</b>	
<b>Payment Information</b>	



## Cross-System Alignment

---

### **Early Learning Council, Oregon Health Policy Board & DHS Joint Subcommittee:**

- Developmental Screening
- Outcomes Alignment
- Data Systems
- Care Coordination Across Systems

**TANF:** Family Stability, Employment and Child Safety

**Developmental Disabilities:** Foster Care Reduction & New Children's Waiver, Services to Transition-Age Youth

# Breakthroughs

**Differential response:** Child welfare intervention model allowing more children to remain safely at home and increasing support for families.



**Performance-based Contracting:** Shift focus from process to outcomes, increasing accountability for both programs and providers

**Service Equity:** Improving access and outcomes for DHS clients representing diverse communities.



**Continuous Learning:** Ongoing training, development, and leadership opportunities to improve employee engagement and client service outcomes.

# Child Welfare Programs

---

## **2013-15 Budget Overview**

## GRB 2013-15 Investment in Outcomes

---

DHS Child Welfare Programs has set a goal of further reducing foster care by 15% in the next 10 years.

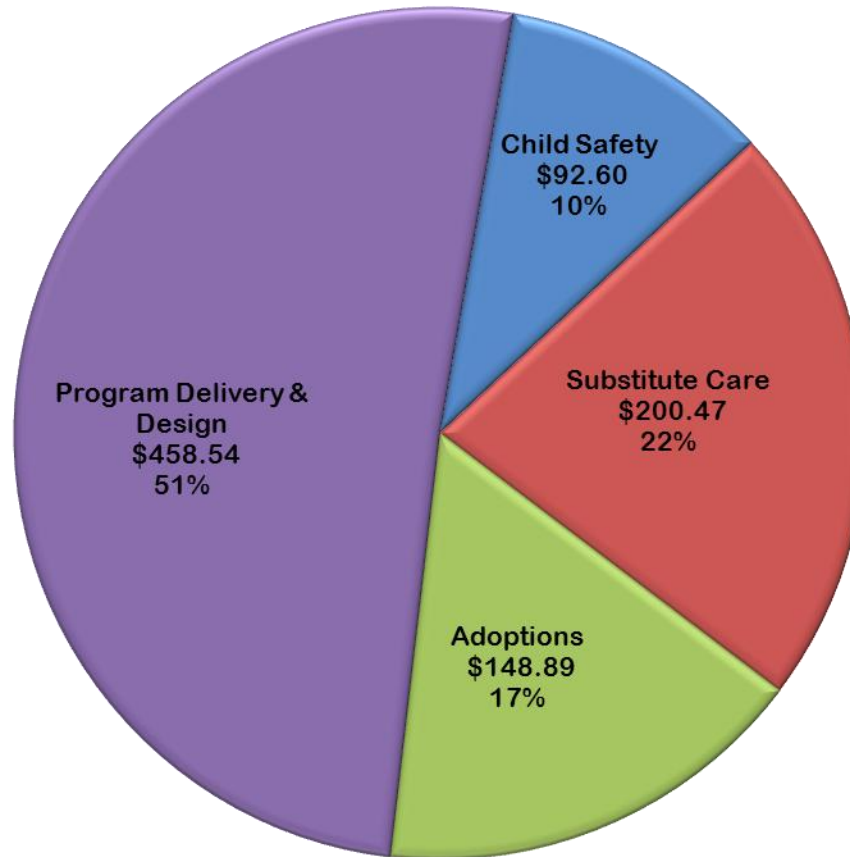
### **2013-15 Strategies:**

- Statewide Implementation of SB 964 (2011)
- Implement Differential Response Model of CW Intervention
- Improve Indian Child Welfare Act Compliance
- Pursue Reinvestment Strategy
- Investment in Runaway & Homeless Youth Programs

# GRB Child Welfare Budget – 10% of DHS GRB

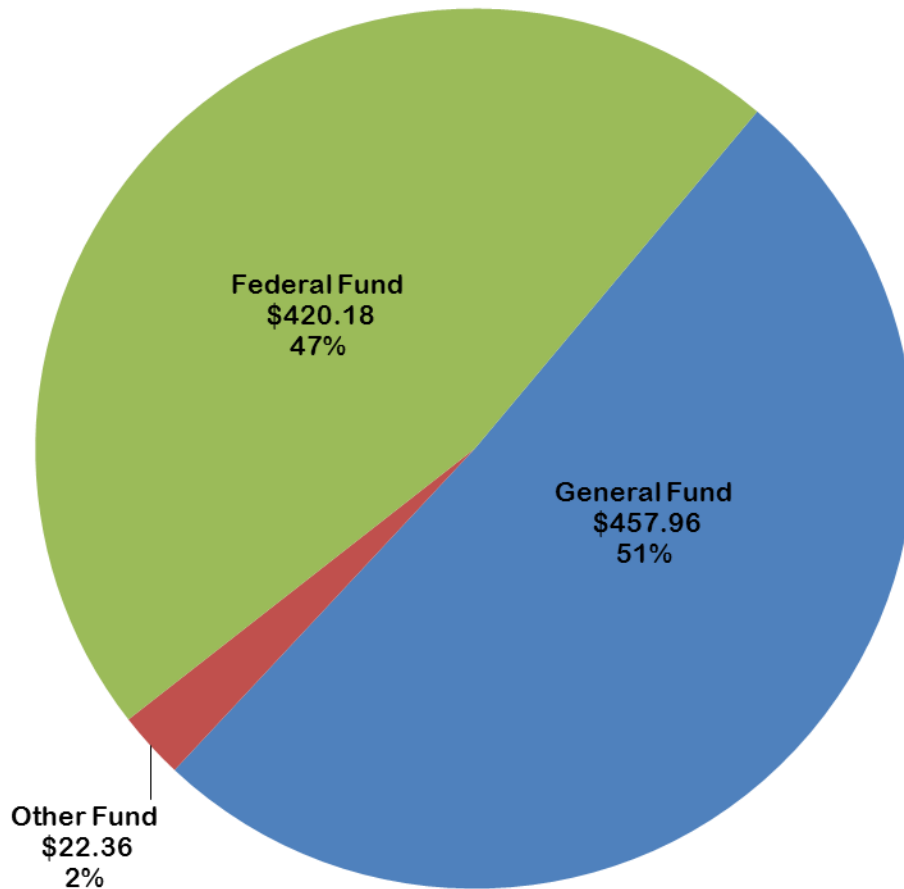
---

## Child Welfare Budget \$900.5 Million



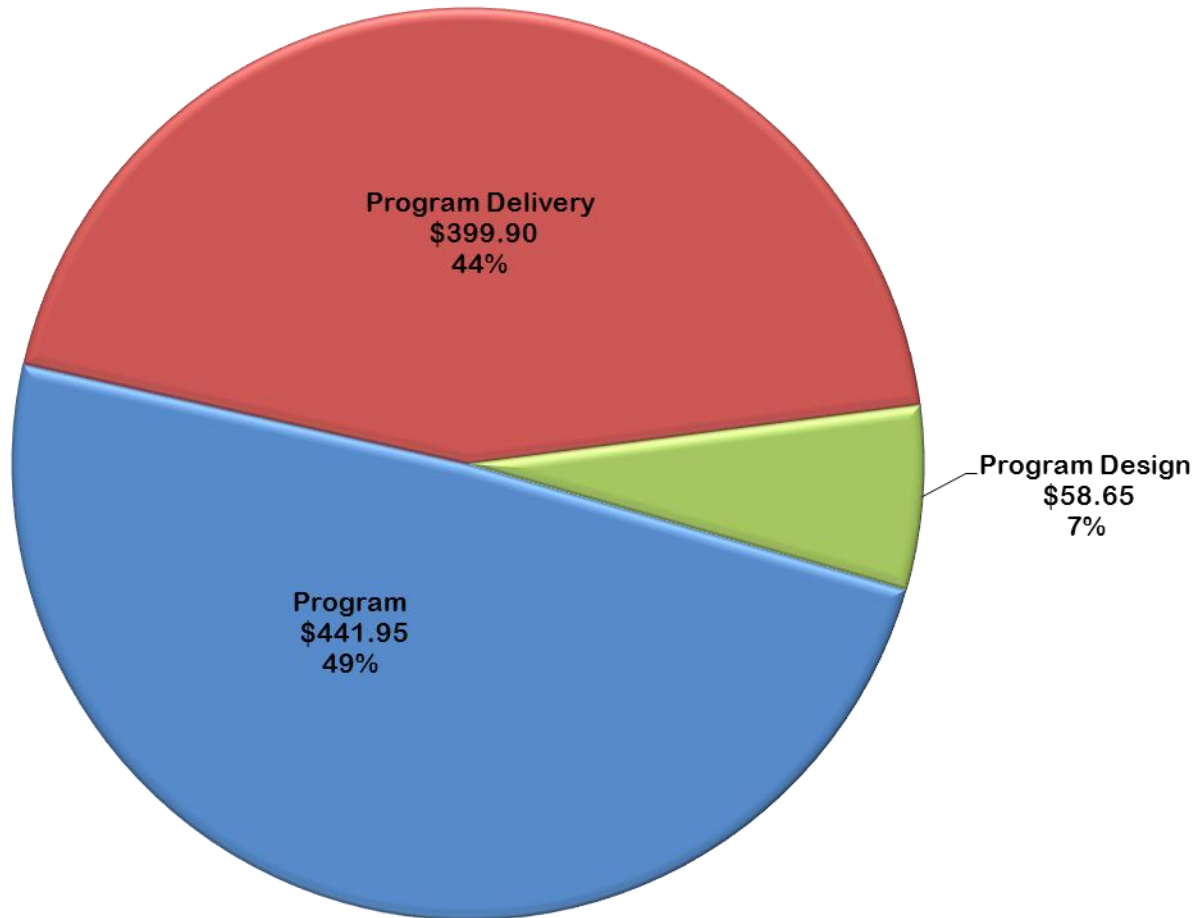
# GRB Child Welfare Budget

## Child Welfare Budget by Fund Type - 47% Federal Funds



# GRB Child Welfare Budget

## Child Welfare Program Budgets - 93% Direct Payments and Services



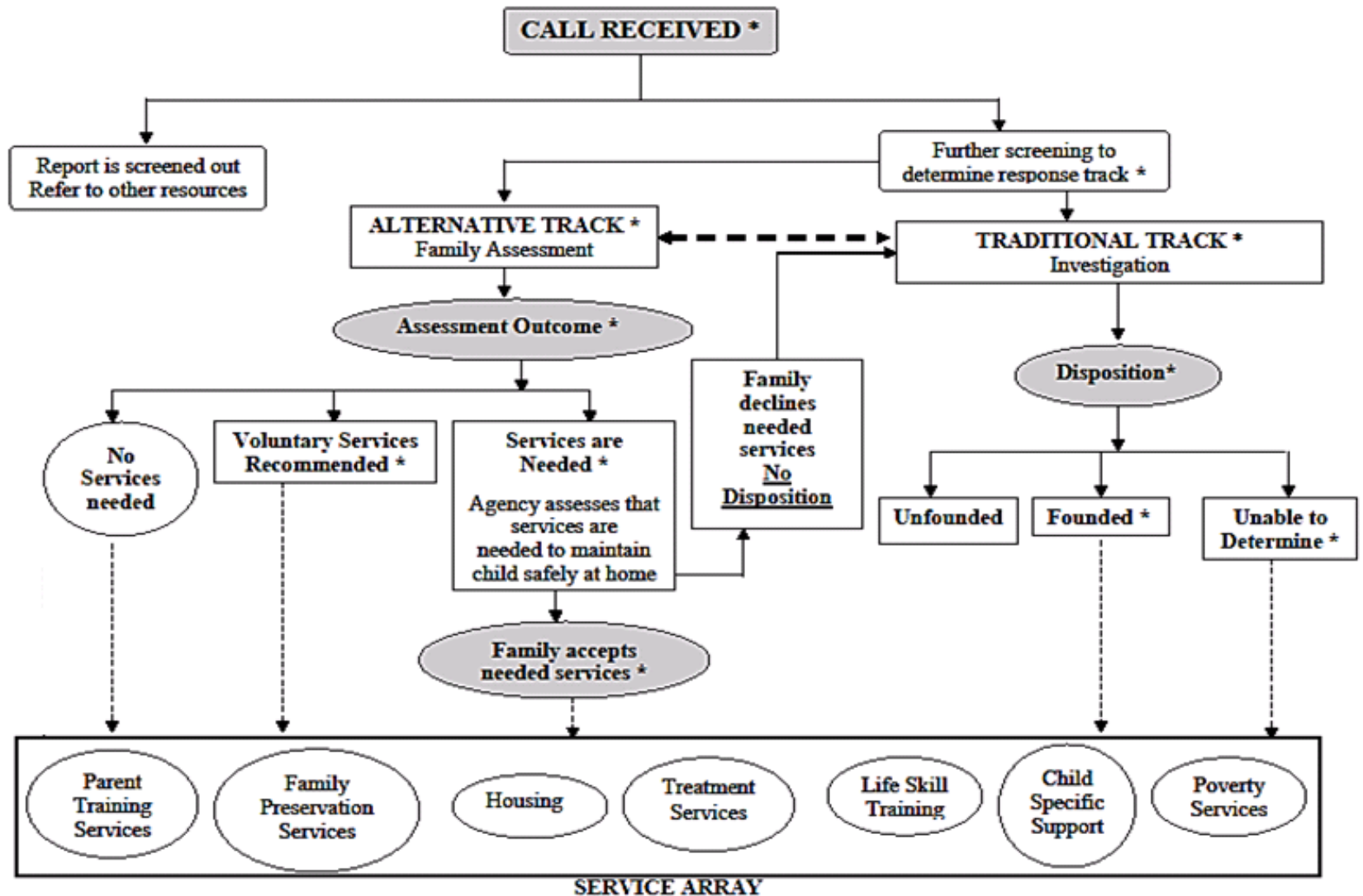


## SB 964 – Service Continuum

---

- Front-end Intervention Services w/ A&D or MH Providers
- Family-Centered, Behavioral Health Residential & Outpatient Treatment
- Supervised, Drug-Free, Emergency & Permanent Housing
- Case Management & Life Skills
- Intensive In-Home Services
- Enhanced Visitation Services
- Family Find
- CASA
- Other services/interventions

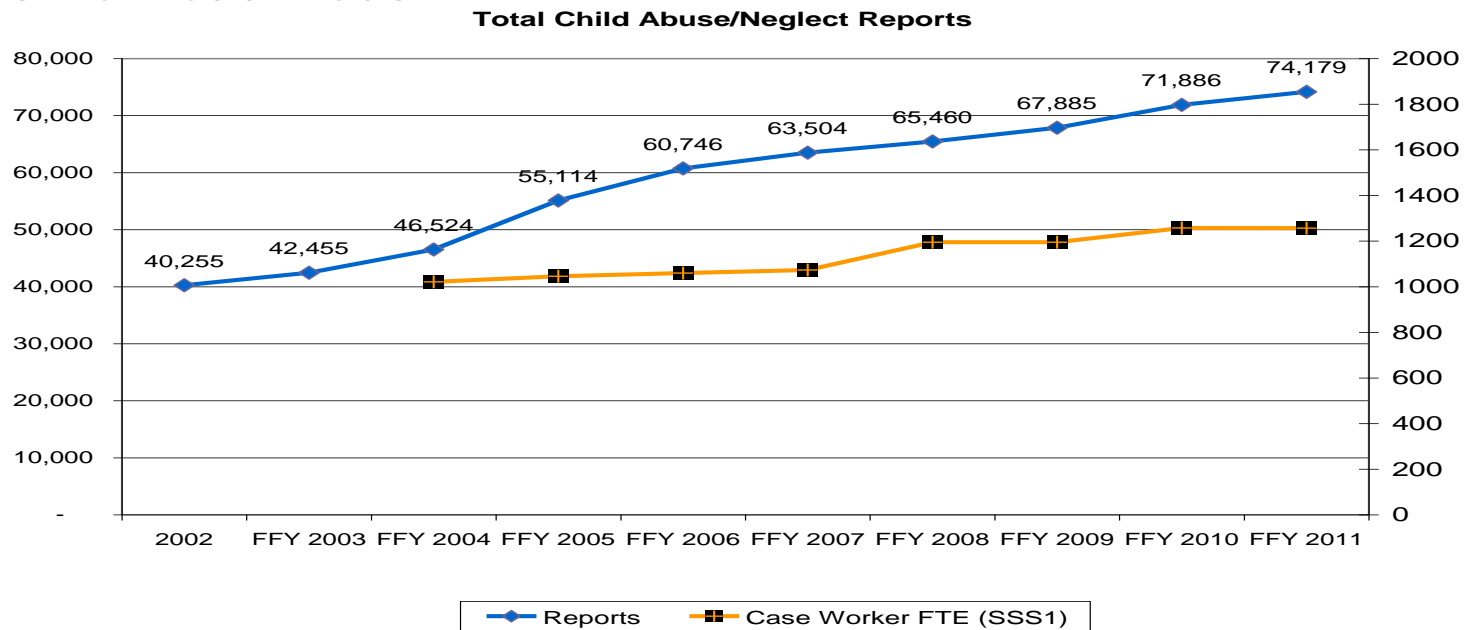
# SB 964 & Differential Response



# Child Welfare Workload

Staffing levels in DHS have a direct relation to the ability to provide timely, accurate eligibility, case management and adult/child safety services.

Actual Staffing level for Child Welfare as of November 2012 was 66.7% of the workload model.



- GBB would invest in Child Welfare staffing to get to 80% of workload model by the end of the 2013-15 biennium.

## National Data: CW Staffing & Child/Family Outcomes

---

*2010 Child Welfare Information Gateway Report:*

**FINDING:** Essential child welfare processes—including family engagement, relationship building, assessment, and permanency planning—are time intensive and require frequent worker-client contact. Heavy workloads and caseloads reduce the amount of time available for these processes.

*2006 Children's Bureau & 2003 GAO Reports:*

**FINDING:** Large caseloads and worker turnover delay the timeliness of investigations and limited the frequency of worker visits with children, thereby hampering agencies' attainment of key federal safety and permanency goals.

## Prevention Reinvestment Strategy

---

For every 5% reduction in foster care, Oregon saves/avoids spending approx. \$7-8 mil (TF) per year

A commitment (state and/or federal) to reinvesting those savings in services that preserve and strengthen families would:

- 1) result in better outcomes for our kids and their parents;
- 2) result in fewer kids in foster care; and
- 3) reduce the use of high end state systems such as Mental Health, Addictions and the Criminal Justice systems.

# Oregon's New IV-E Waiver Strategy

---

January 2013: DHS applied for a second Federal Administration on Children and Families IV-E Waiver.

Oregon is one of 10 states with a new waiver application pending (10 additional waivers are to be awarded).

Oregon's new waiver proposal takes a system-wide approach and is requesting from the ability to use IV-E foster care savings to support Oregon's current child welfare system transformation, including:

- interventions to support families in-home;
- expedite the return of children who are in substitute care;
- work with youth and families to reduce the need for high level residential care.

# Child Welfare Programs

---

## **Additional Issues/System Challenges**



## Additional Issues/System Challenges

---

- Dependency Representation
- Provider Reimbursement and Supports
- Housing

# Child Welfare Program Summary

---

## **Child Welfare Programs are designed to:**

- Keep Abused and Neglected Children Safe
- Stabilize and Preserve Families
- Maintain Family and Community Connections

## **Where we are now...**

Outcomes are improving and system is transforming.

## **Where we (hope) we are headed...**

- Continue investments in and partnerships with community-based services, supports for children, youth and families.
- Improve responsiveness to system drivers (neglect) and system changes resulting from reduced utilization of foster care.
- Strengthen efforts focused on equitable, culturally-specific services.
- Improve partnerships to maximize education, health and transition outcomes for foster children and youth.

### Questions regarding Child Welfare Programs?

#### DHS Presentations: What's Next

- **March 20** – Committee invited testimony
- **March 21** – ***Public Testimony for OVRS, SS, DD and CW***
- **March 25 – 26** Aging and People with Disabilities Programs

**Thank you!**