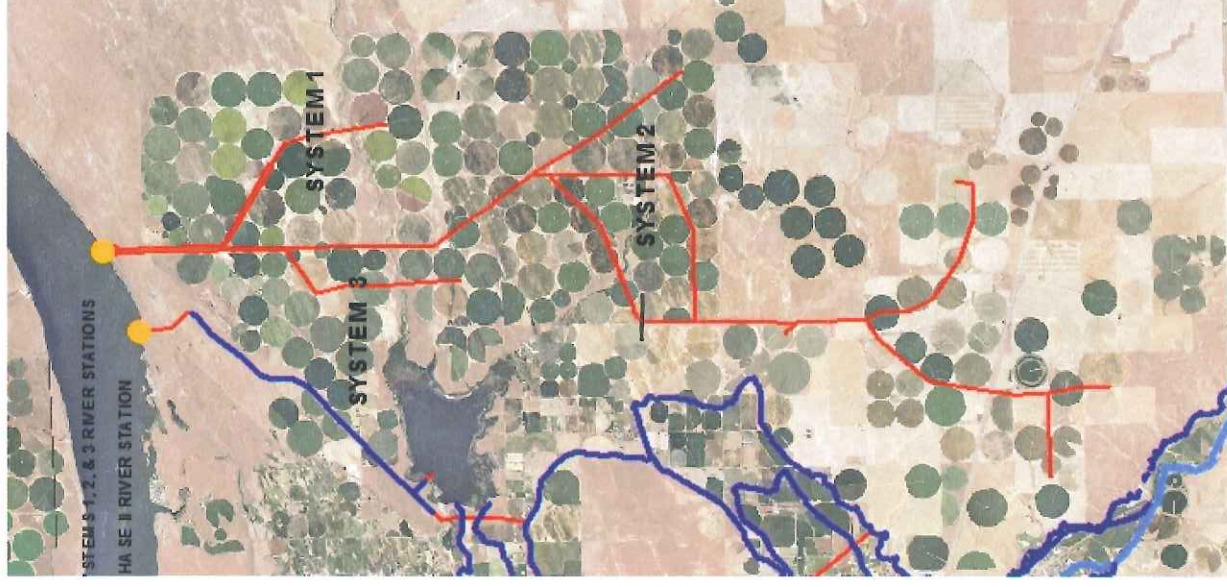


# COLUMBIA RIVER EXAMPLE PROJECT



## ATTRIBUTES OF PROJECT:

- Infrastructure into Critical Ground Water Management Area – while we are ready willing and able to pump, we have pumped 25% less groundwater in major sub-area since the project's development.
- River station updates:
  - Screen upgrade was voluntary
  - NEPA, NOAA, COE reviews / consultations
- NOAA response to our “Thank you” for their completion of consultation: “You are very welcome. And we thank you for your effort and investment to protect salmon.”