

The Cost of Wilderness

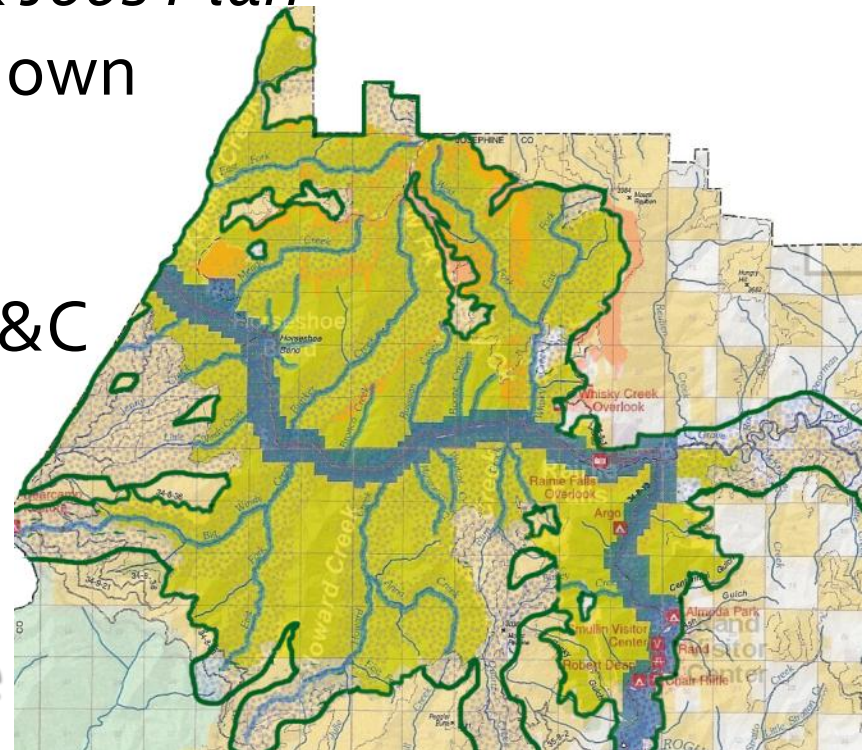
*Impact on Josephine County of
O&C Trust, Conservation, and Jobs Plan
Title V – Oregon Treasures*

Title V – Oregon Treasures

- *O&C Trust, Conservation, & Jobs Plan* permanently withdraws from economic utilization **over 64,000 acres** of O&C lands **in Josephine County alone** (over 120,000 acres statewide)¹
 - **Section 502. Expansion of Wild Rogue Wilderness Area** withdraws 58,100 acres of contiguous O&C lands
 - **Over 50,000 acres from Josephine County** (+8,000 in Curry)
 - **Section 514. Wild and Scenic River Designations** withdraws lands within ¼ mile on each side of 93.2 miles of creeks
 - **3,000 additional acres in Josephine County** (+1,000 in Curry)
 - **Section 515. Additional Protections for Rogue River Tributaries** withdraws lands within ¼ mile of 47.8 miles of creeks
 - **11,300 additional acres in Josephine County** (+4,000 in Curry)

Withdrawal of O&C Lands

- Josephine County has 259,559 acres of O&C lands
- *O&C Trust, Conservation, & Jobs Plan* would permanently shut down over **64,000** acres of them
- That's almost **25%** of all O&C lands in Josephine County
- **O&C lands** are the lands we can **least afford to lose**



Why Do We Care?

- Josephine County is in dire economic straits
 - Chronic high unemployment leads to high poverty rates
 - Loss of timber revenues has decimated public safety funding
- Wilderness expansion means **permanent** loss of valuable economic resources
 - Losing 25% of our O&C lands will curtail future potential of restoring historic base of county revenue and jobs
- Our county cannot be self-sufficient without economic utilization of this land

Historic Josephine County Economy

- Timber industry has been only real economic base in Josephine County
 - O&C revenues provided 100% of county services 1970-1981
 - Timber industry *directly* paid 26% of all wages in county²
 - Every 1 MMBF of timber harvest creates 22 jobs³
- Josephine County has abundant natural resources
- If access to our natural resources is withdrawn, our local economy is unsustainable
 - Many economic alternatives have been proposed
 - None have been successful in restoring our economy

Current Josephine County Economy

- 14% average unemployment over last 3 years⁴
- 19% of county residents below the poverty level⁵
- 28.6% of county receiving food stamps⁶
- 40.7% of households with children receiving public assistance⁷
- 7.1% home foreclosure rate⁸
- Laid off 60% of Sheriff's Department, 50% of DA's office, and jail is operating at 38% capacity

Josephine County Employment

- Peak total jobs in Josephine County in 2011: 22,880
- Top five employment sectors:¹⁰
 1. Healthcare 4,130 18.0%
 2. Government 3,920 17.1%
 3. Retail 3,510 15.3%
 4. Leisure & hospitality 2,600 11.3%
 5. Manufacturing 2,260 9.8%
- Only 10% of current jobs bring new wealth into county
- 90% are service jobs that recirculate existing wealth
- This is not a sustainable economic model

Our Investment in Wilderness

- **26.7%** of all land in U.S. is federally owned
- **70.9%** of all land in Josephine County is federally owned
- **4.9%** of all land in U.S. managed as wilderness
- **7.0%** of Josephine County managed as wilderness
- *O&C Trust, Conservation, & Jobs Plan* would increase that to **12.8%**
- We've *already* contributed more than our share

BLM Says This is Not Wilderness

- In 2007, BLM listed all O&C lands that meet federal criteria for both Wilderness and Wild & Scenic designations
- Only **5,667 acres of the 58,100 acres** in the Rogue Wilderness Expansion Area meet federal criteria for Wilderness designation, according to BLM¹¹
 - Statewide, only **10.2% of the lands** this Plan designates as Wilderness meet the federal criteria for Wilderness
- Only **16 miles of the 93.2 miles of creeks** in this area that the plan designates as Wild & Scenic meet federal criteria for Wild & Scenic designation, according to BLM¹²
 - Statewide, only **19.5%** of the waterways this Plan designates as Wild & Scenic meet the federal criteria for Wild & Scenic

Our Ask

- We fully support SJMO6, in its request to turn over control of the O&C lands to the counties
- We do not support then endorsement of the O&C Trust, Conservation, and Jobs Plan
- We request that you remove references to that Plan from SJMO6

Thank you

Southern Oregon Resource Alliance