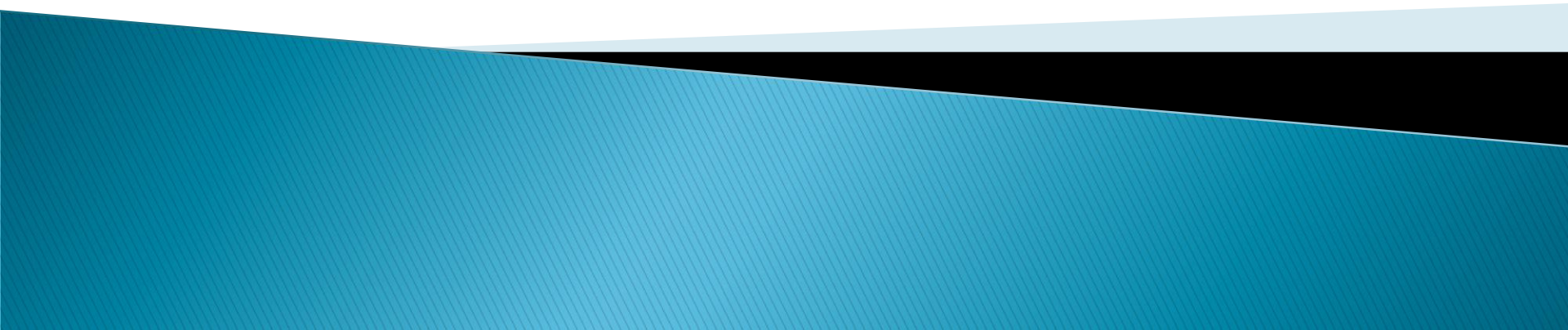


Psychiatric Security Review Board

- ▶ Mary Claire Buckley, J.D., Executive Director
 - ▶ Kate Lieber, J.D., Adult Panel Chairperson
 - ▶ Eric Johnson, Ph.D., Juvenile Panel Chairperson
- 

PSRB's Responsibilities

- ▶ To assume jurisdiction over adults found “guilty except for insanity” who could pose a substantial danger to others and youth found “responsible for insanity” who suffer from a “serious mental condition” or any other mental disease or defect who are a substantial danger to others
- ▶ To conduct “gun relief hearings” for persons with a previous “mental health determination” who wish to have their gun rights restored
- ▶ Currently 589 adults under the adult panel and 21 “young persons” under the juvenile panel

Mission Statement:

The Psychiatric Security Review Board's mission is to protect the public through the ongoing review of the progress of “guilty except for insanity” adults and “responsible except for insanity” youth and a determination of their appropriate placement as well as through a hearings process for persons with a “mental health determination” to decide whether their firearm privileges should be restored.

Primary Goals and Objectives

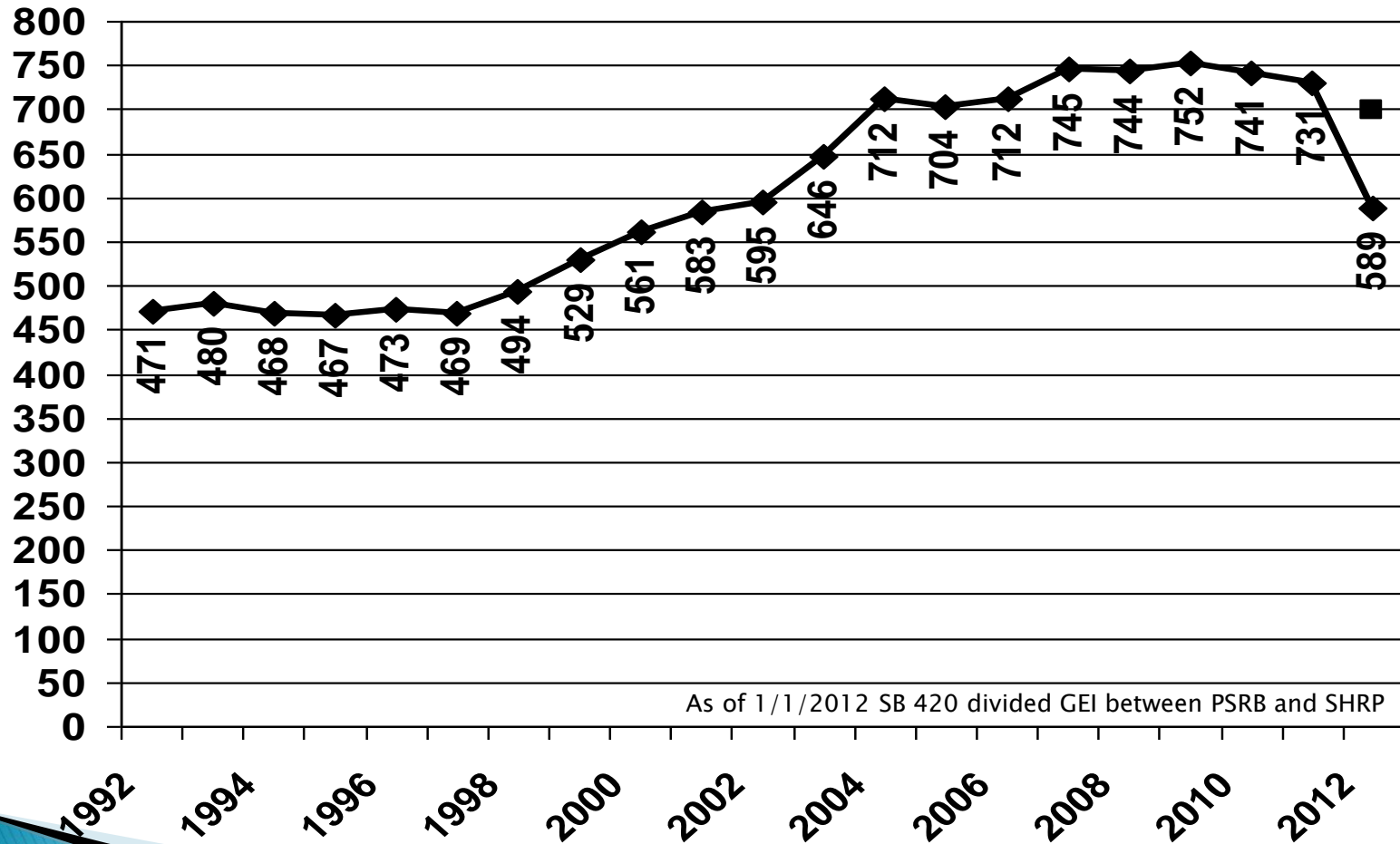
- ▶ To protect the public when making a determination at each hearing of any type
- ▶ To facilitate the community release of individuals approved by the Board to the appropriate level of residential care and treatment services
- ▶ To monitor individuals on conditional release to assure they remain safely in the community

Means to Achieve Objectives

1. Conduct timely hearings to make the necessary determination regarding each population
2. Work with AMH and community providers to assure adequate continuum of treatment and residential services are available
3. Oversee the community release of individuals to assure public safety and to assist their recovery

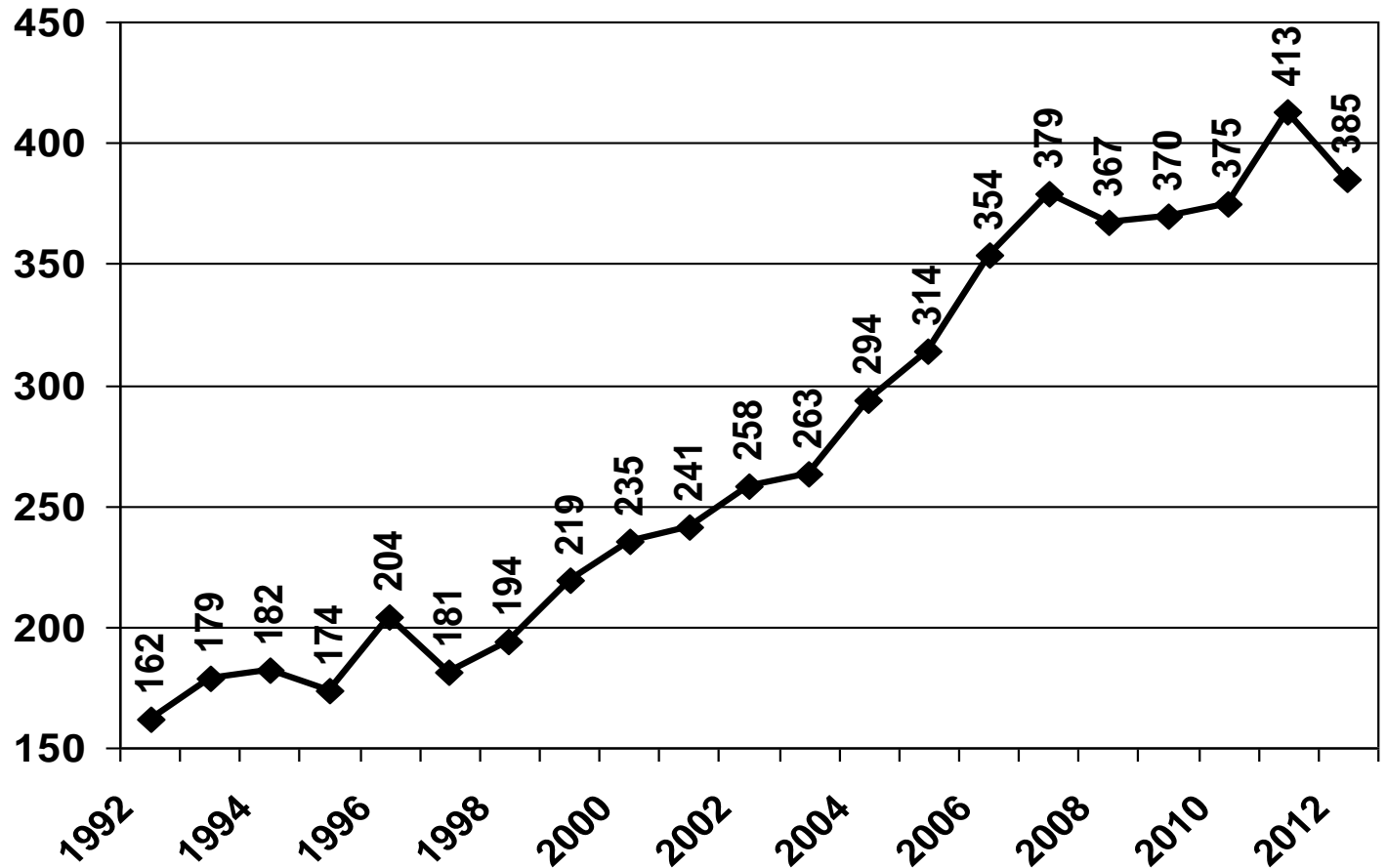
Adult PSRB Clients

(by Year*)



Adult Clients on Conditional Release

(by Year*)



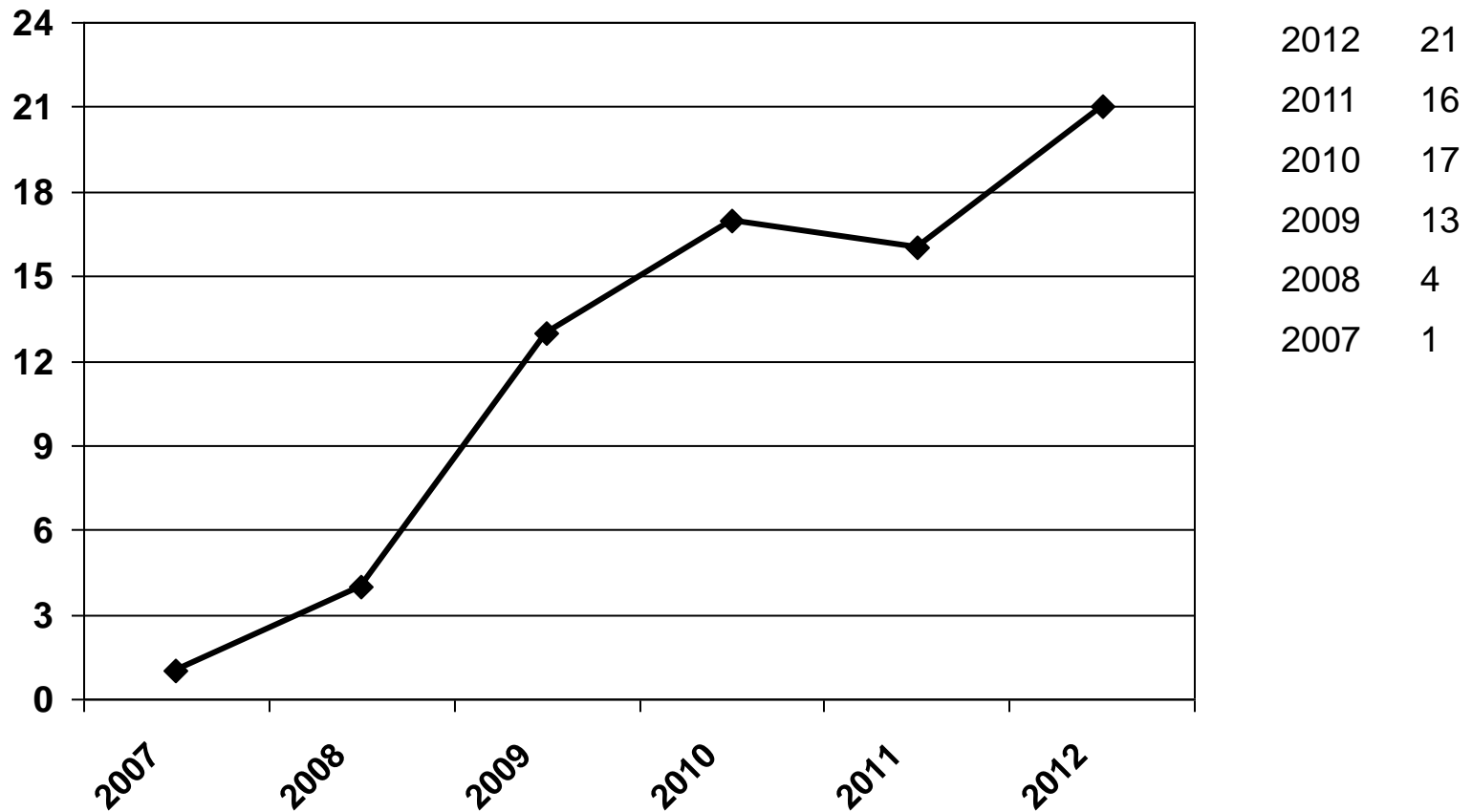
* Numbers as of 12/31 of given year

Major Changes In Past 10 Years:

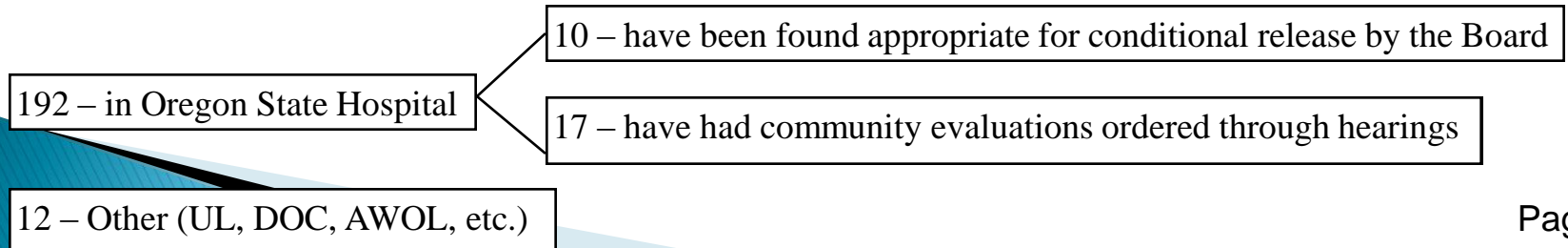
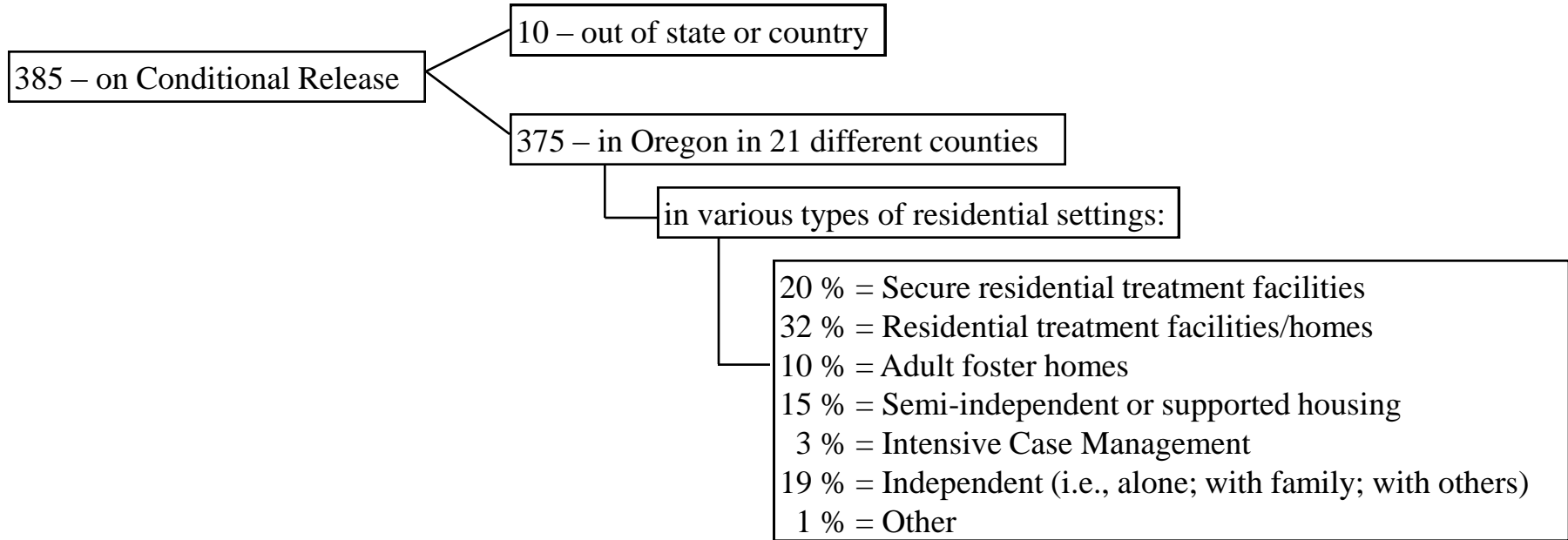
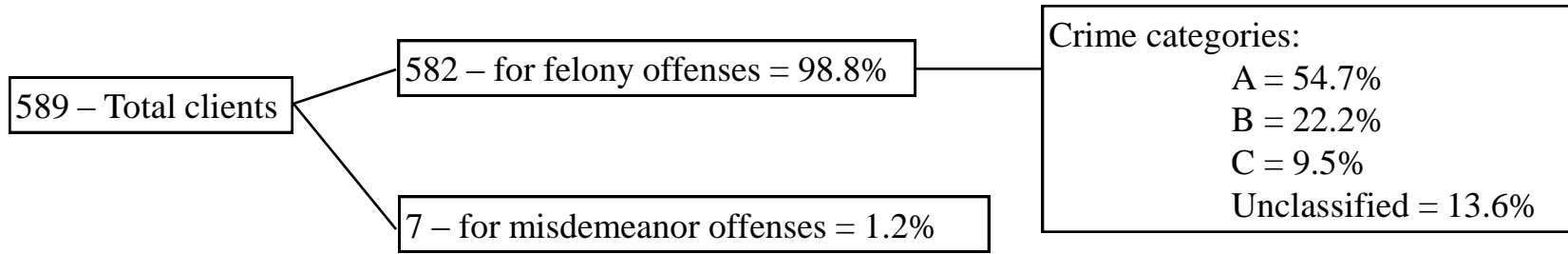
- ▶ Addition of Juvenile Psychiatric Security Review Board – effective July 1, 2007
- ▶ Addition of the Gun Relief Unit – effective March 2010
- ▶ SB 420 – effective January 1, 2012
- ▶ HB 3100 – effective January 1, 2012

Juvenile Clients under PSRB

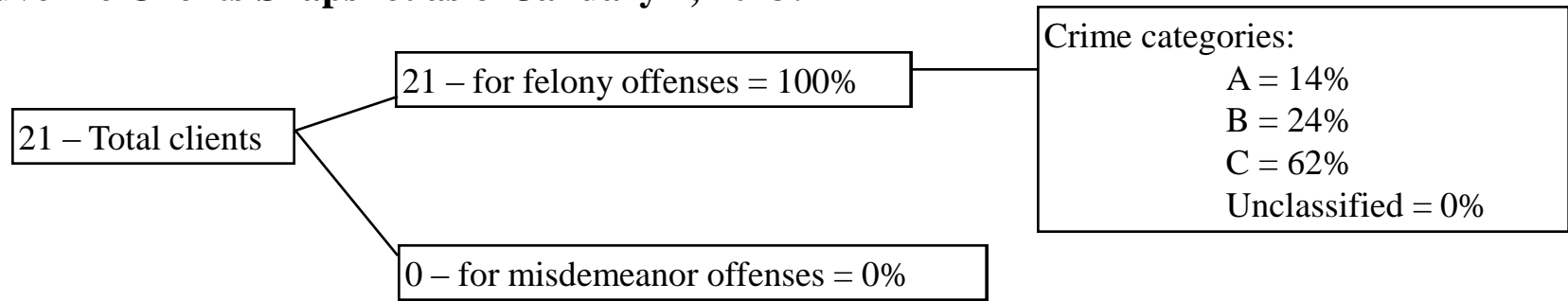
(by Year*)



Adult Clients Snapshot as of January 1, 2013:



Juvenile Clients Snapshot as of January 1, 2013:



11 – on Conditional Release

6 different counties in various types of residential settings:

1 = Secure Residential
4 = Residential Treatment Home
3 = Foster Home
1 = Group Home
1 = Proctor Home
1 = Department of Corrections

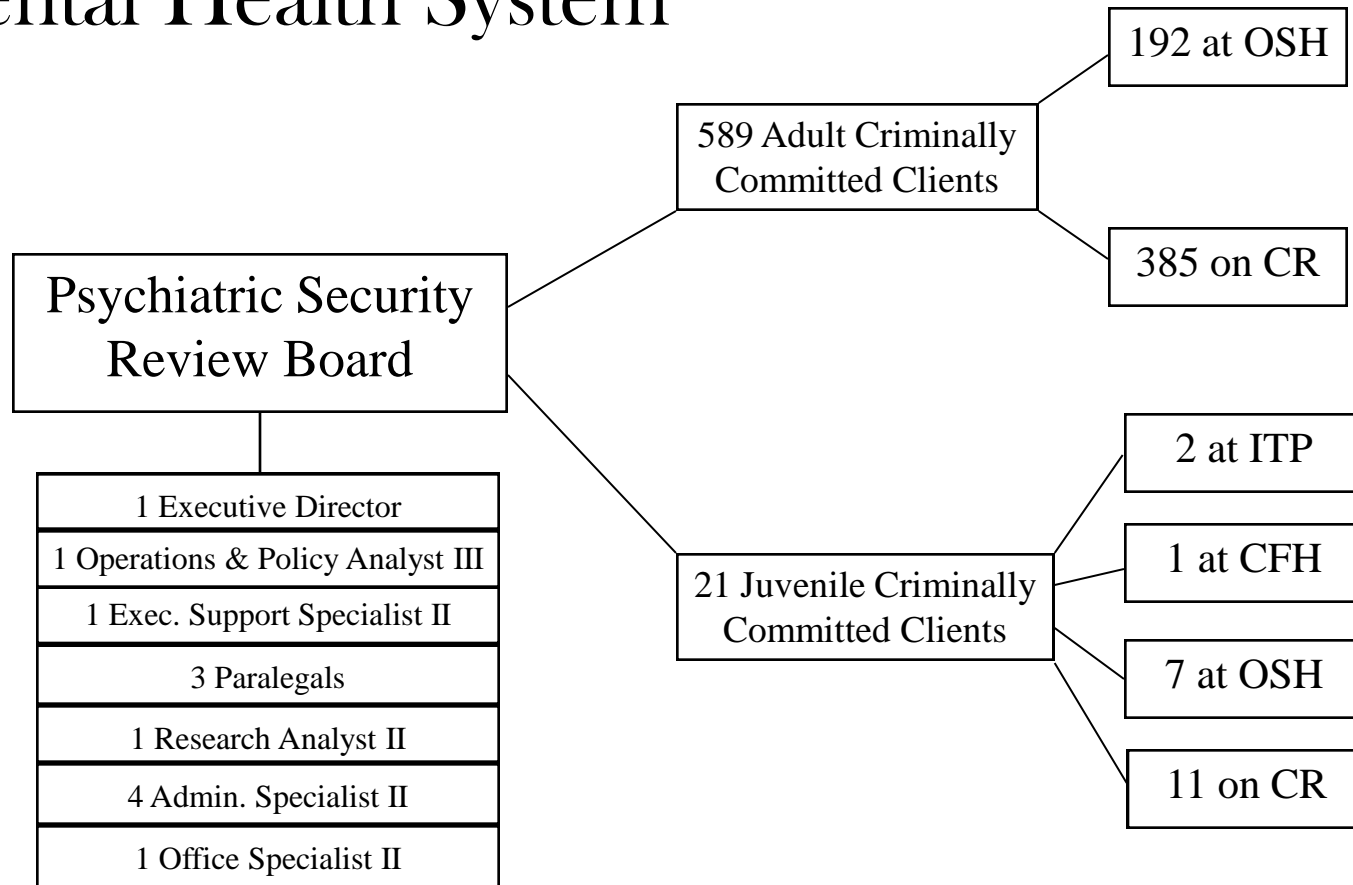
10 – in Secure Inpatient Treatment Settings

7 = Oregon State Hospital

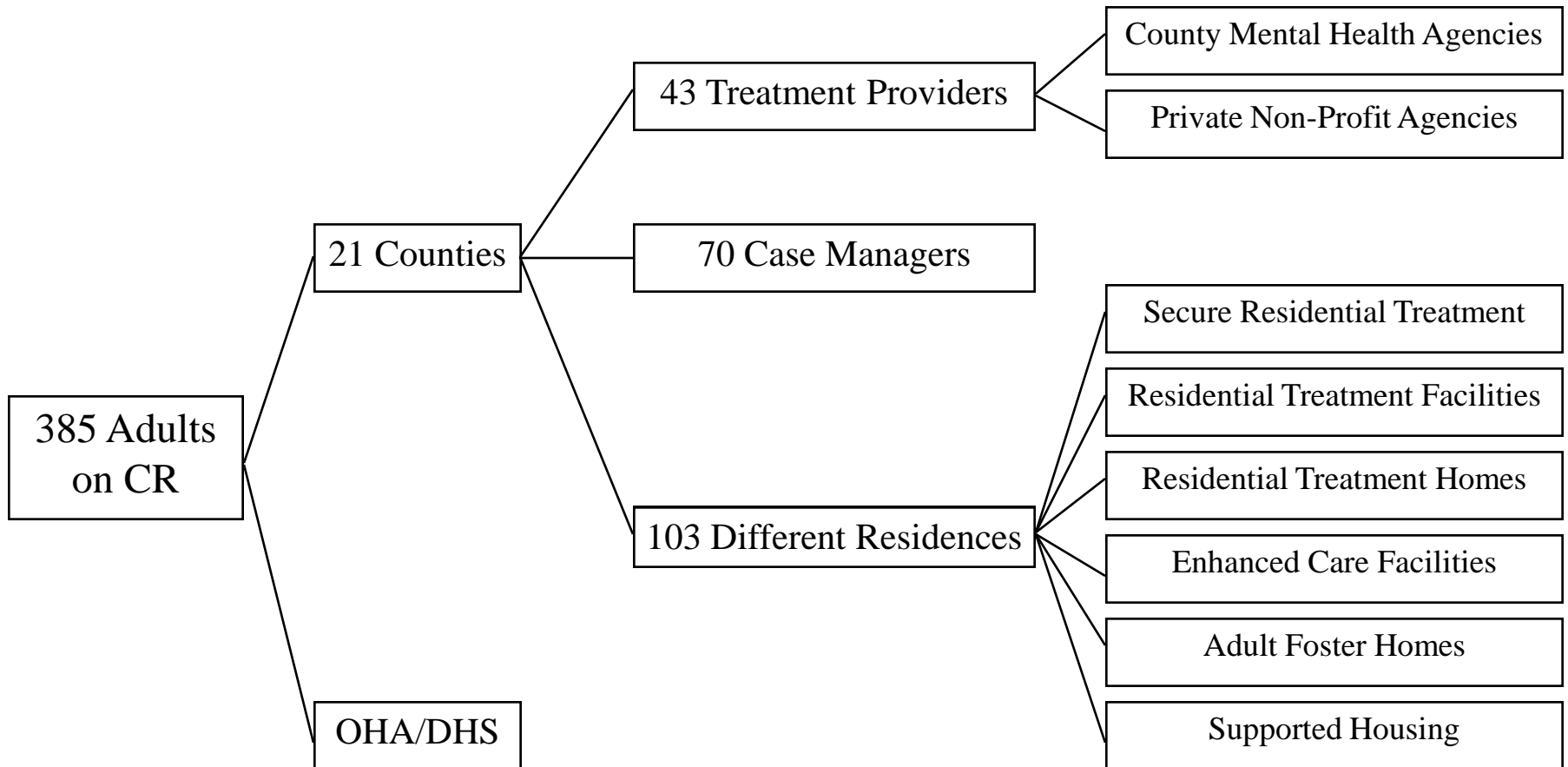
2 = Intensive Treatment Program – Albertina Kerr Center

1 = Secure Adolescent Intensive Program – Children’s Farm Home

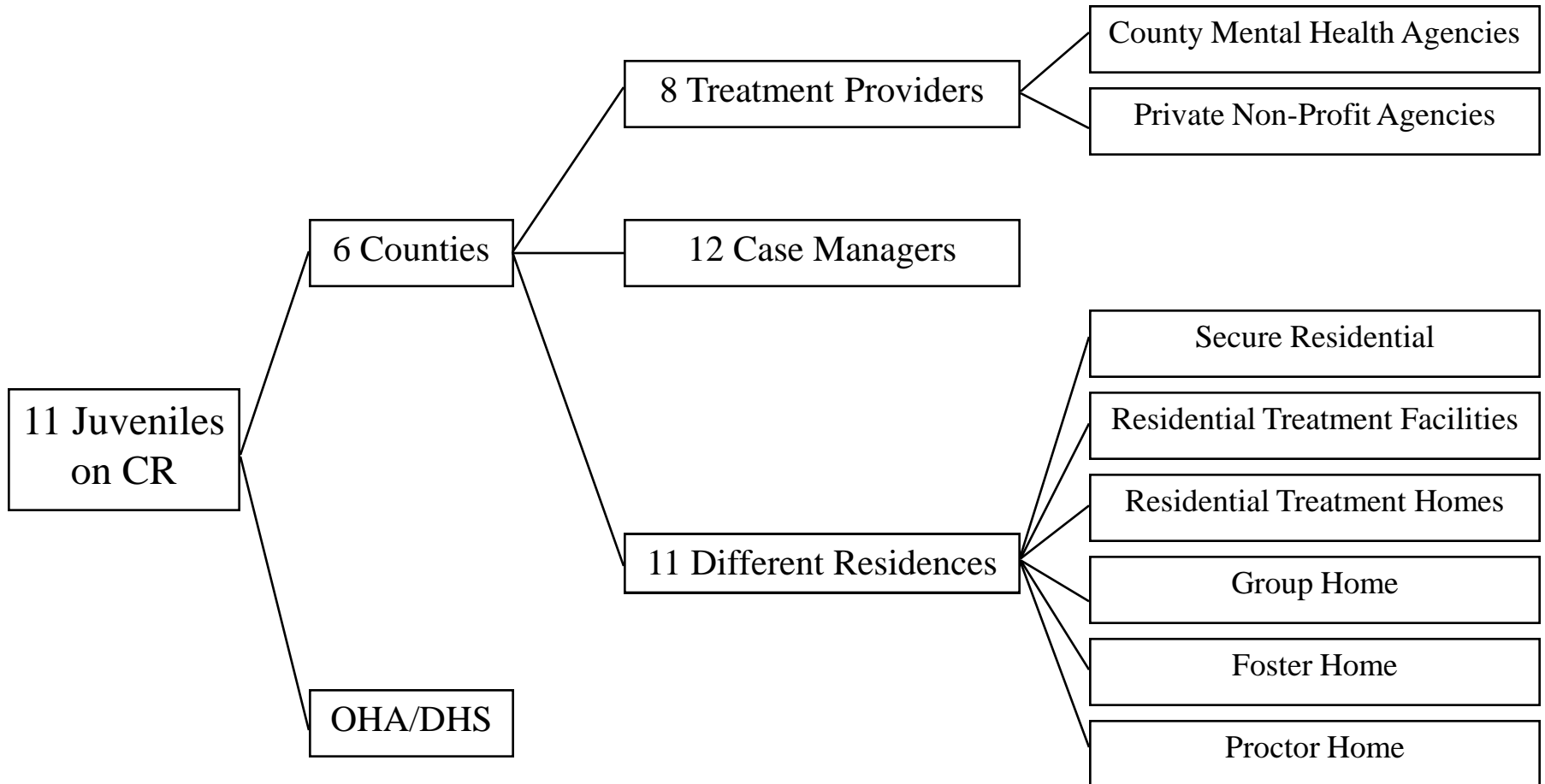
PSRB's Interaction with Oregon's Mental Health System



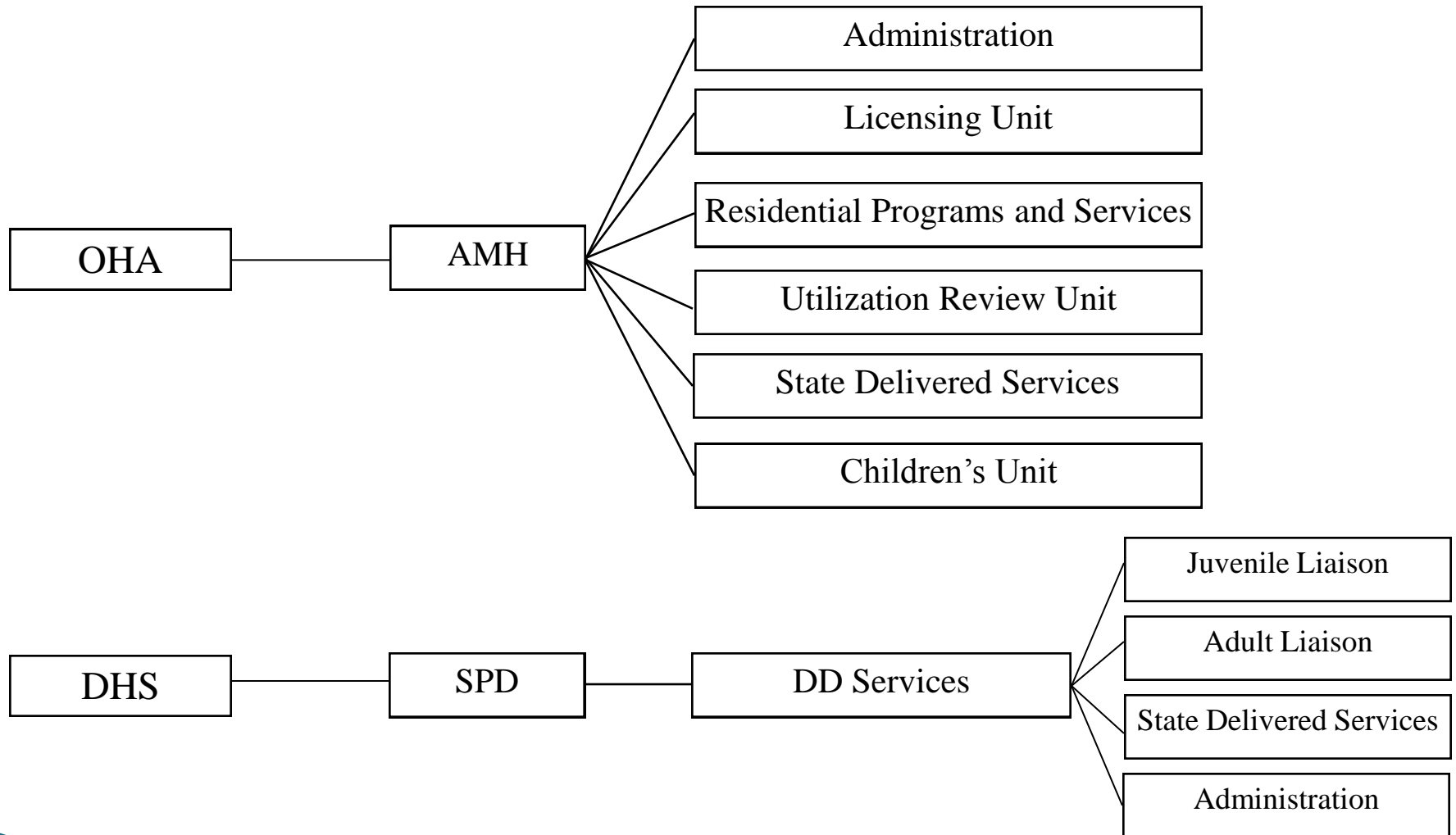
Interaction with Mental Health, cont.



Interaction with Mental Health, cont.

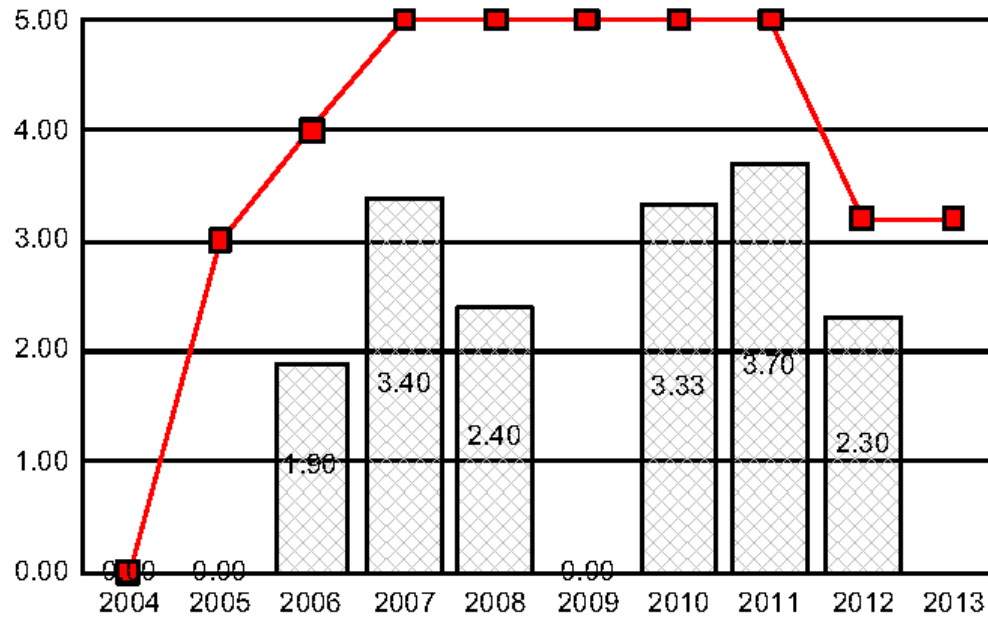


Interaction with Mental Health, cont.



Percentage of Revocations of Conditional Release Based on Commission of Felony

Bar is actual, line is target



Data is represented by percent

Recidivism Rate

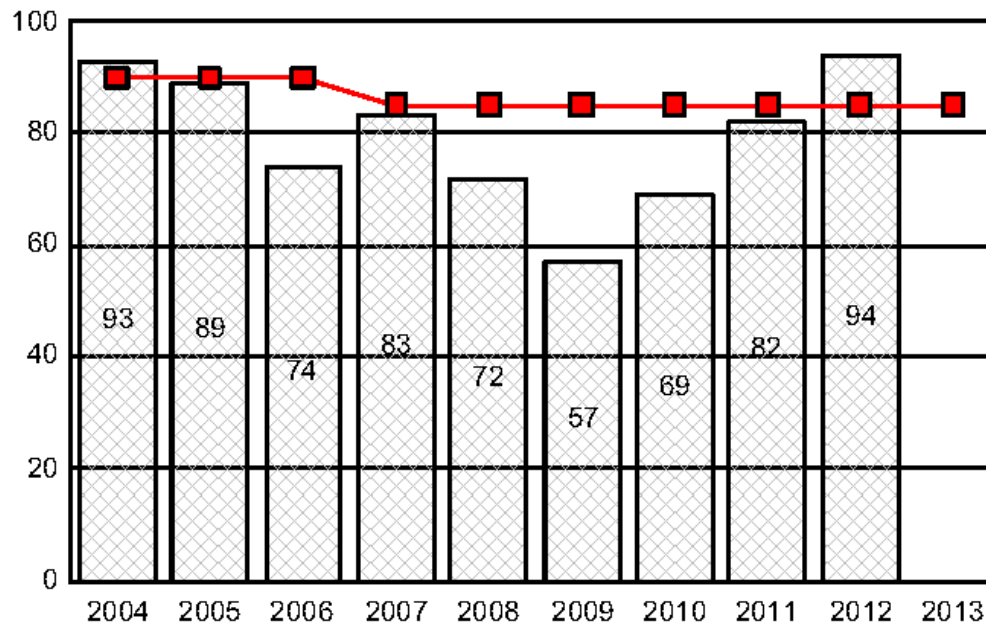
Percentage of Revocations of Conditional Release Based on Commission of a Felony

	On CR *	Revocations	New Felonies	Percentage
2001	241	39	1	2.50%
2002	258	47	5	10.64%
2003	263	56	1	1.75%
2004	294	72	1	1.39%
2005	314	68	0	0.00%
2006	354	54	1	1.85%
2007	379	59	2	3.39%
2008	367	41	1	2.44%
2009	370	33	0	0.00%
2010	375	30	1	3.33%
2011	413	27	1	3.70%
2012	385	44	1	2.27%

*Numbers as of 12/31 of given year

Percentage of Hearings Scheduled Within Statutory

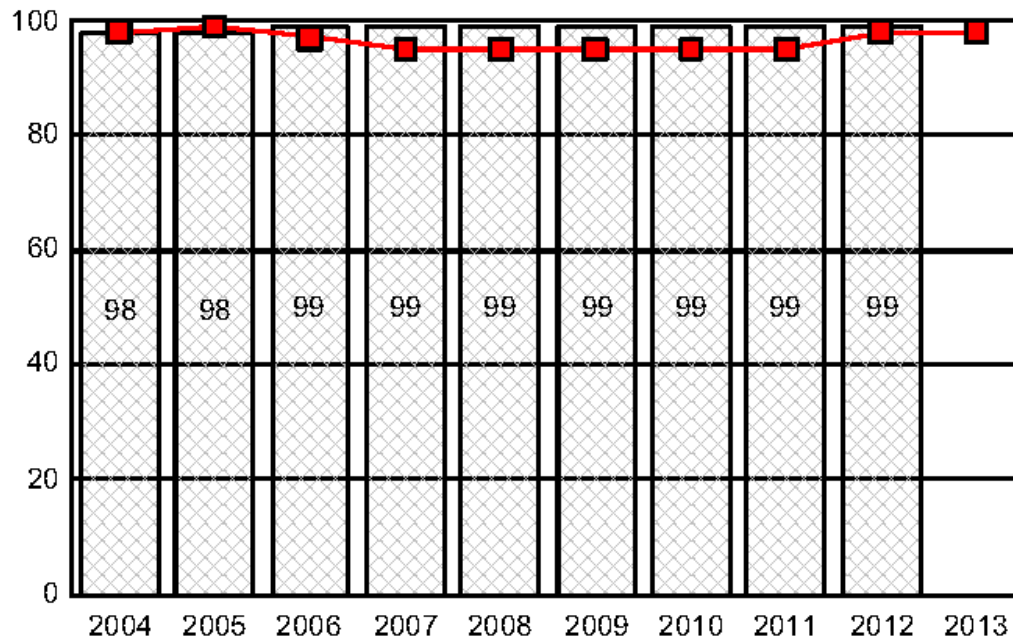
Timelines
Bar is actual, line is target



Data is represented by percent

Percentage of Conditional Releases Maintained in the Community per Month

Bar is actual, line is target



Data is represented by percent

Major Issues Facing PSRB:

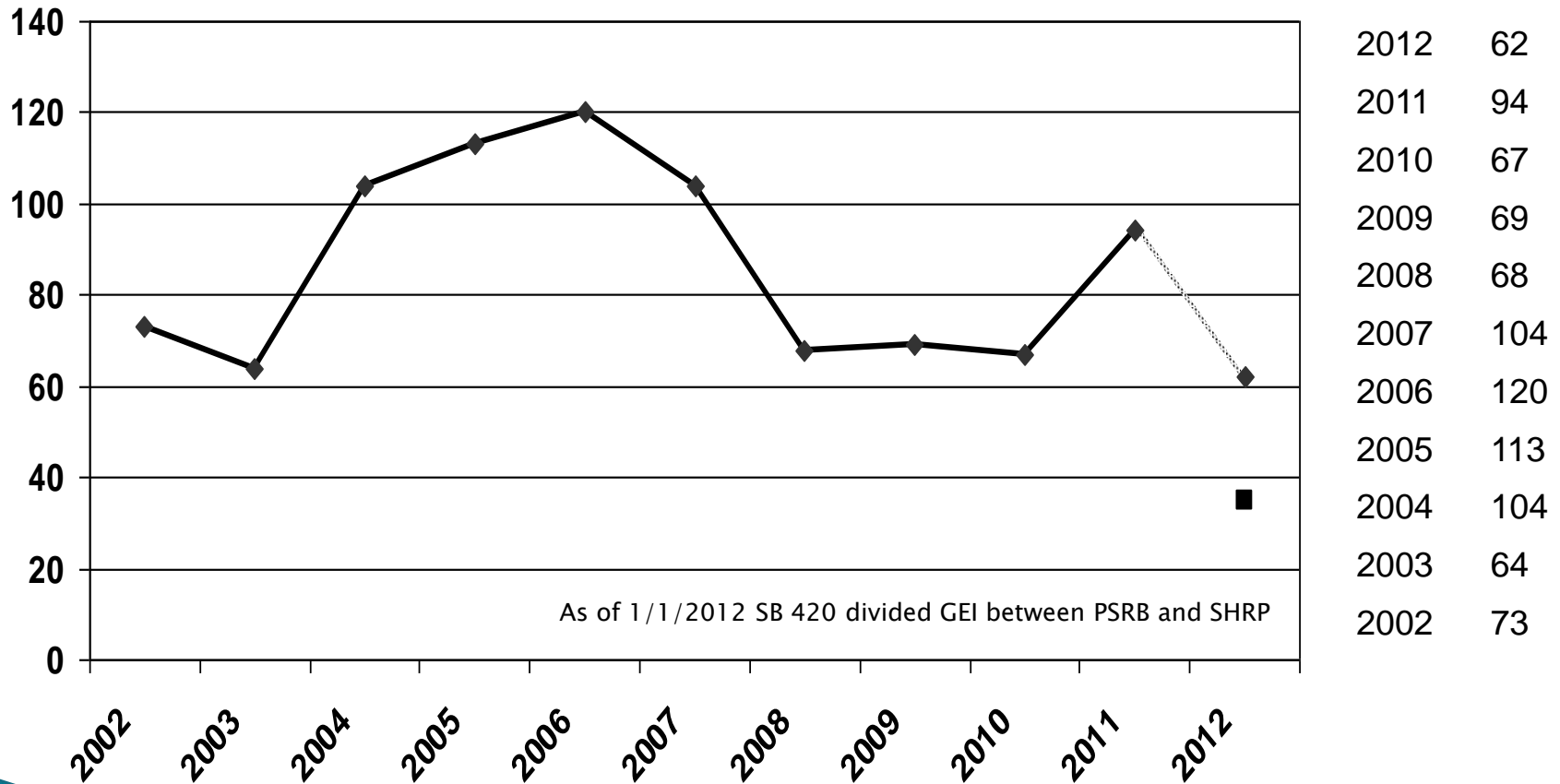
- A. SB 5529 Budget Note which addressed the need for additional community placements for PSRB patients.

Recommendations:

- a) Residential medical facilities
- b) Residential treatment homes near every secure residential treatment facility
- c) Specific specialized treatment in existing facilities
- d) Regional “crisis respite” centers
- e) More Intensive Case Management slots with supports and housing

Adult Clients Placed on Conditional Release by PSRB/SHRP

(by Year)

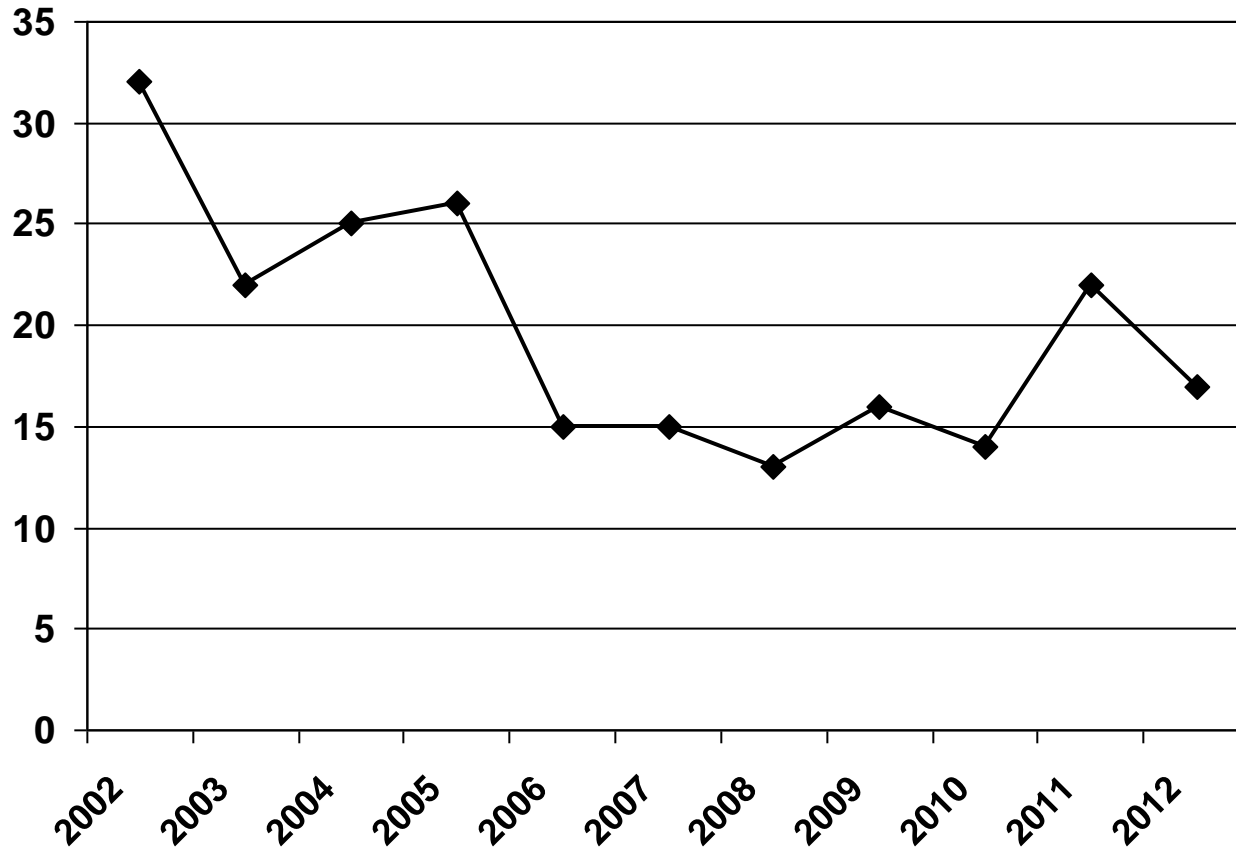


Major Issues Facing PSRB (cont.):

B. HB 3100 addressing the “front door” of OSH

- a) “GEI” misdemeanants no longer under PSRB—discharged or “new” commitment
- b) restorative services should be provided in community unless not available or person too dangerous to self or others
- c) mandatory community mental health evaluation for Class C “GEI” defendants for possible CR
- d) certification of forensic evaluators and specific requirements re: content of report

Court Conditional Releases



2012	17%
2011	22%
2010	14%
2009	16%
2008	13%
2007	15%
2006	15%
2005	26%
2004	25%
2003	22%
2002	32%

As of 12/1/2012 SB 420 divided GEI between PSRB and SHRP

Major Issues Facing PSRB (cont.):

- C. Lack of dedicated GEI flexible funding source at Addictions and Mental Health for unanticipated situations

2013-15 Governor's Recommended Budget

- ▶ Maintains current staffing and budget levels