

Department of Consumer & Business Services 2013-15 Governor's Budget



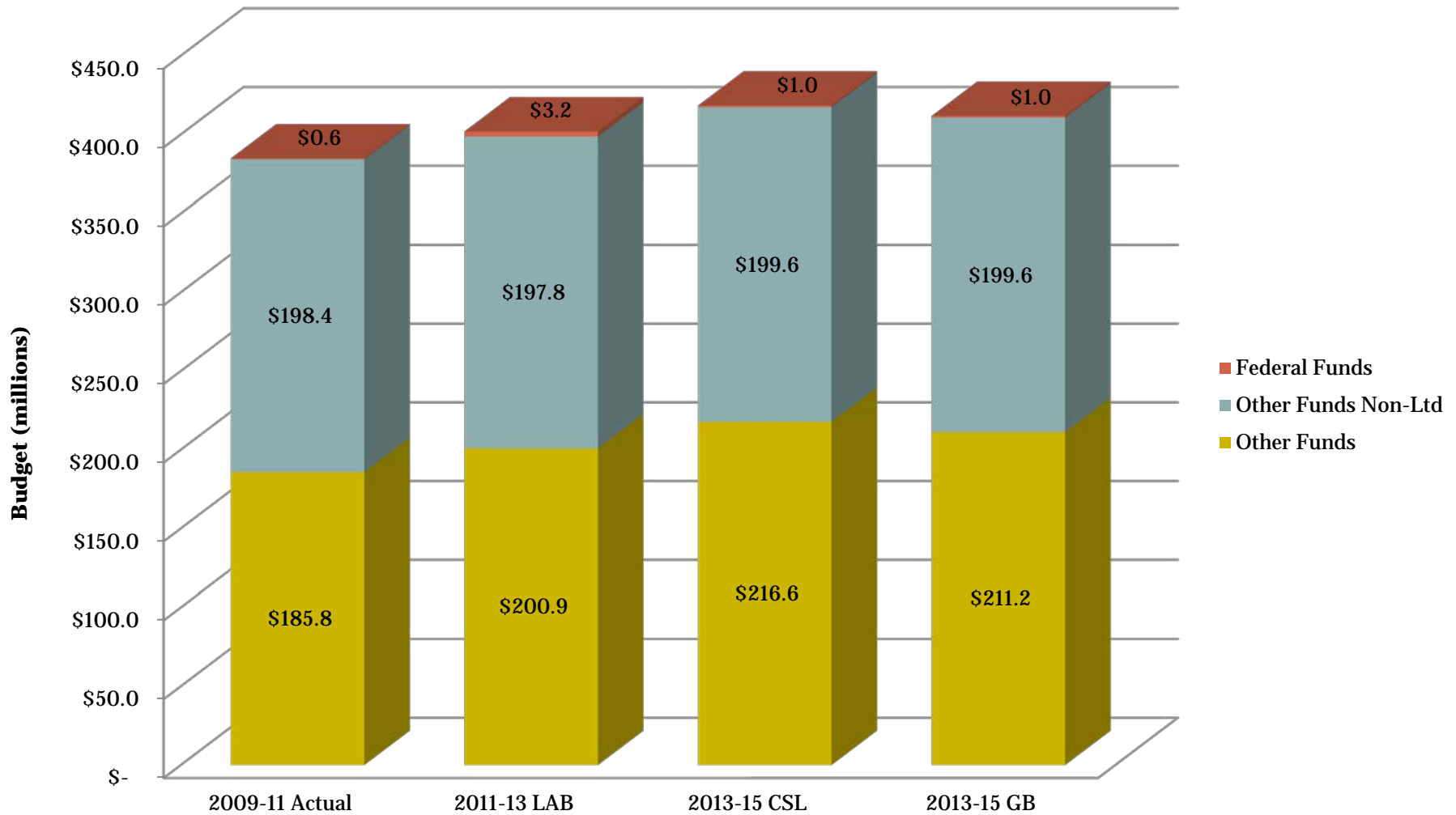
DUSTIN BALL
DAS, CHIEF FINANCIAL OFFICE
MARCH 6, 2013

DAS
DEPARTMENT OF
ADMINISTRATIVE
SERVICES

- **Protects Oregon's Consumers and workers while supporting a positive business climate.**
- **Department regulates the following activities:**
 - ✦ **Workers' Compensation**
 - ✦ **Occupational Health and Safety**
 - ✦ **Financial Services**
 - ✦ **Insurance Companies and Agents**
 - ✦ **Building Codes**

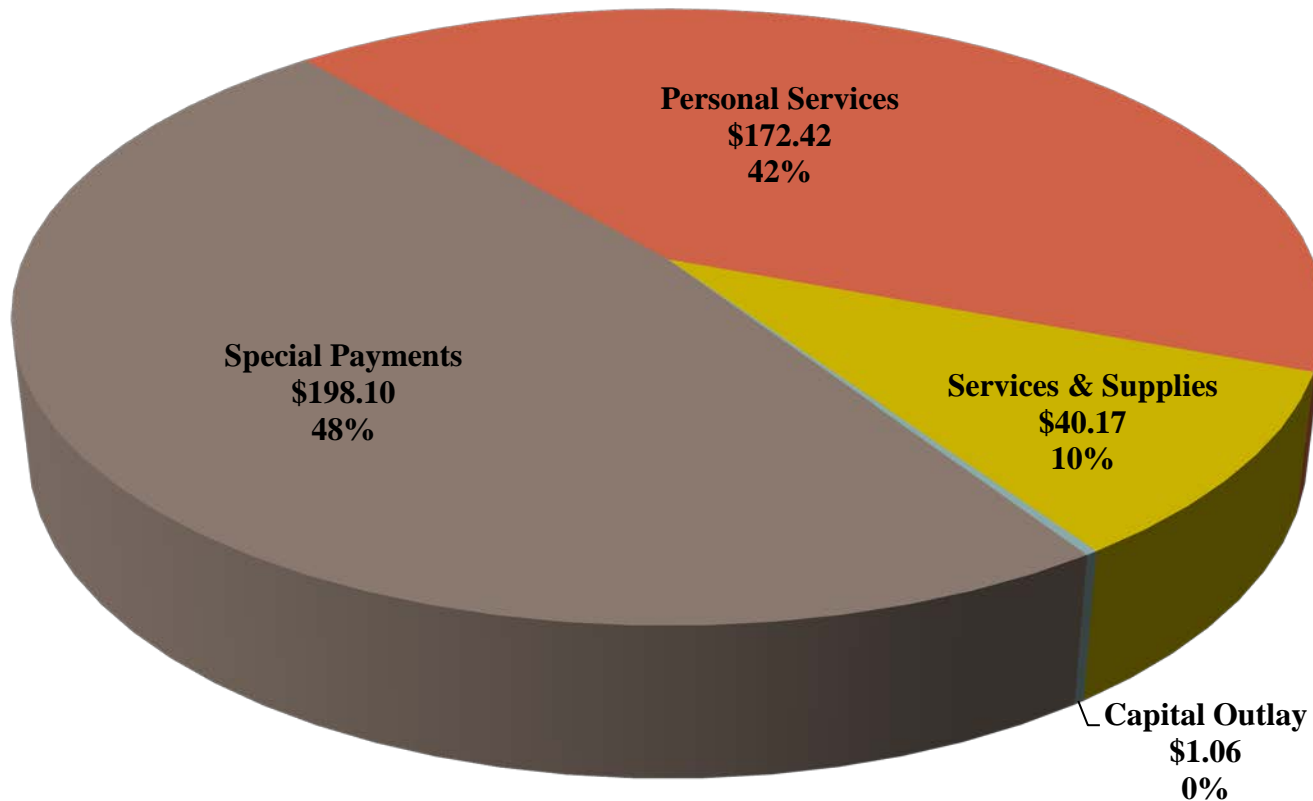
Department of Consumer & Business Services Expenditure History/2013-15 Governor's Budget

3





Agency Budget by Expenditure Category (in millions)

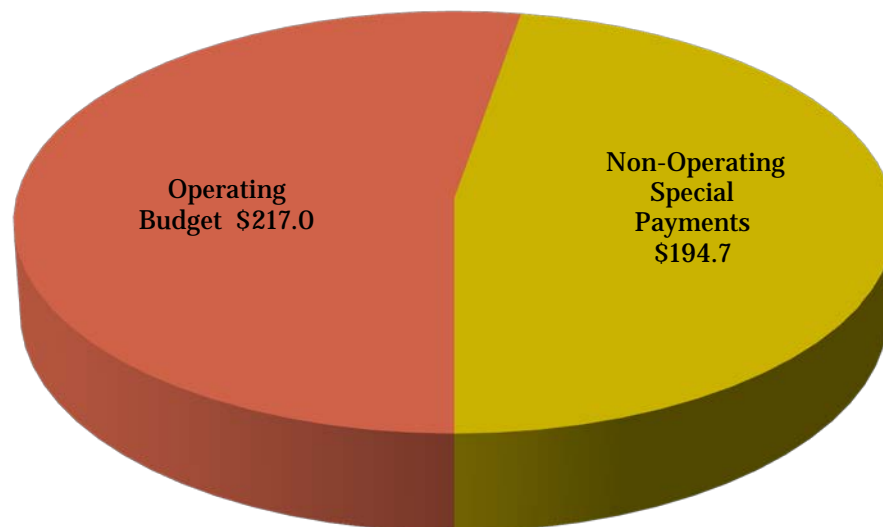


Department of Consumer & Business Services

2013-15 Governor's Budget

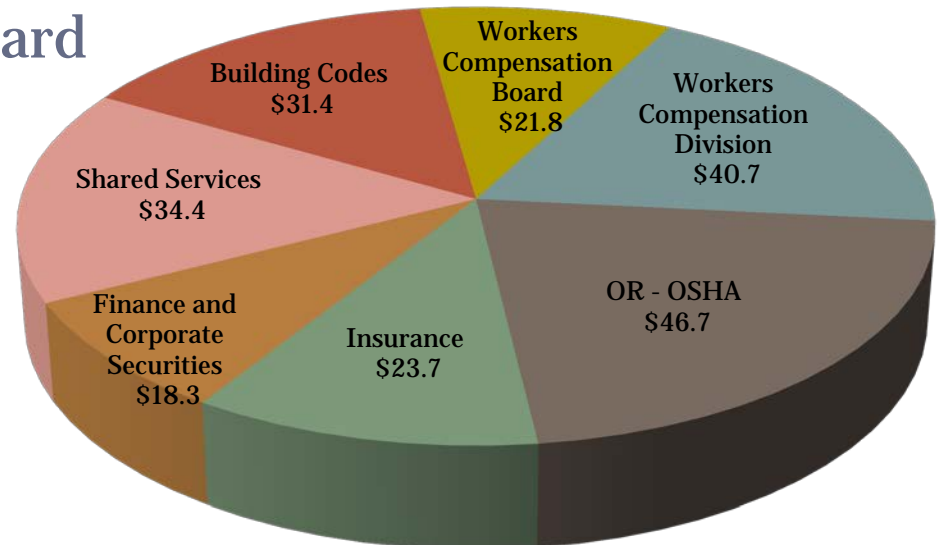
5

- **No Policy Changes**
- **Statewide Adjustments**



- **Main Operating Divisions**

- Building Codes Division
- Workers' Compensation Board
- Workers' Compensation Division
- OR – OSHA
- Insurance Division
- Finance and Corporate Securities
- Shared Services



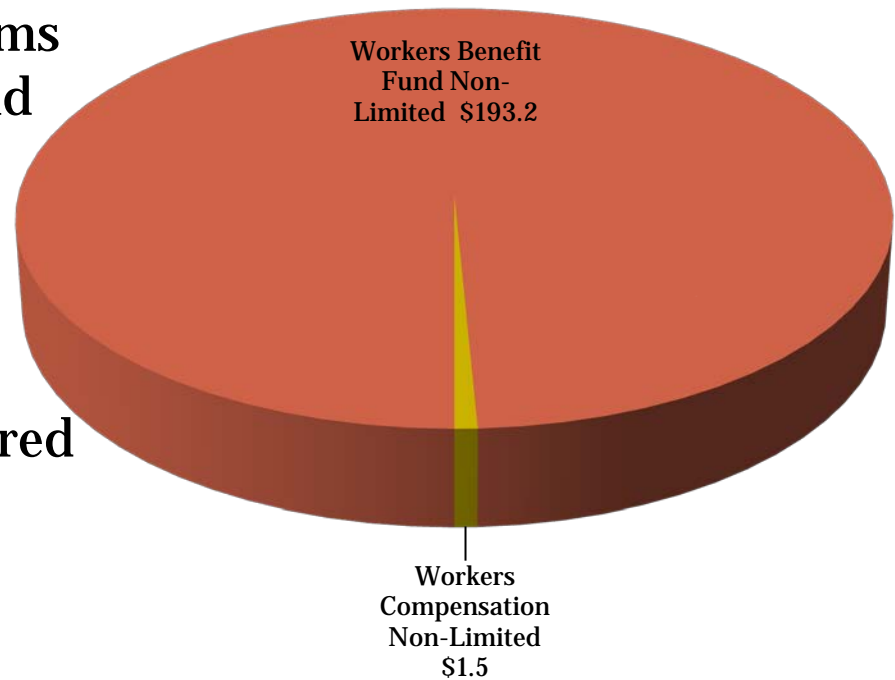
- **Non-Operating Programs**

- **Workers' Benefit Fund (NL)**

- ✦ Supports a variety of programs that help injured workers and employers.

- **Workers' Compensation Accounts (NL)**

- ✦ Protects workers of self insured employers.



- **Workers' Compensation Insurance Premium Assessment**
 - Employers pay the premium assessment on workers' compensation policies.
 - Funds the Workers' Compensation Board, the Workers' Compensation Division, and OR – OSHA.
- **Workers' Compensation Cents per Hour Assessment**
 - Employers and employees each contribute half of the assessment.
 - Funds the Workers' Benefit Fund

- **Business Licenses and Fees**
 - 500+ Dedicated fees, assessments, and charges, paid by licensees and users of services
 - Funds the Building Codes Division, the Insurance Division, and the Division of Finance and Corporate Securities
- **Federal Monies**
 - Senior Health Insurance Benefit Assistance
 - OR-OSHA

- **Standard Statewide Adjustments:**
 - Updates to DAS Price List and State Government Services Charges, placeholder for Statewide Administrative Savings, PERS Rate and PERS Policy adjustments