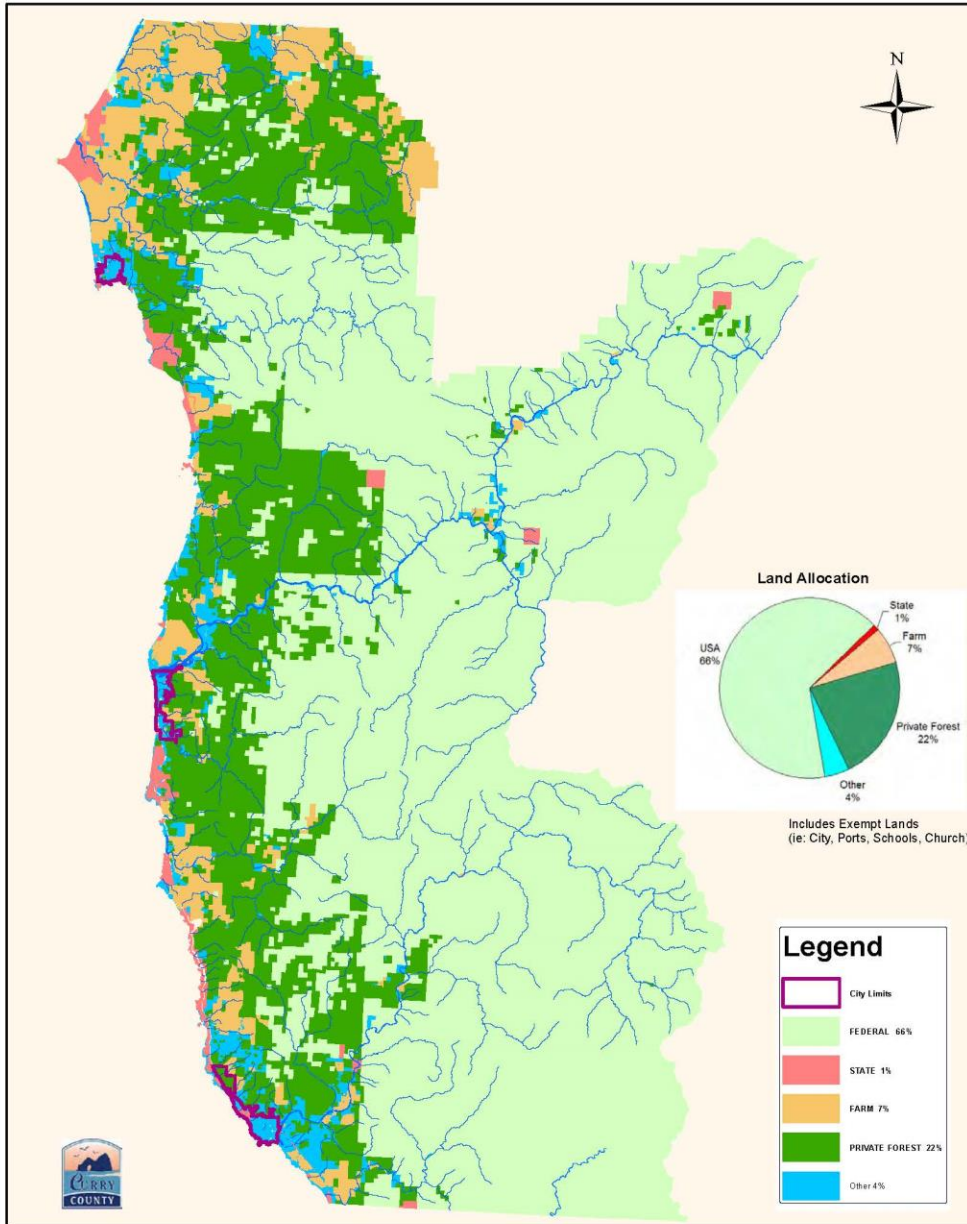


FISCAL PROBLEMS FACING CURRY COUNTY

What has brought us to this
point?



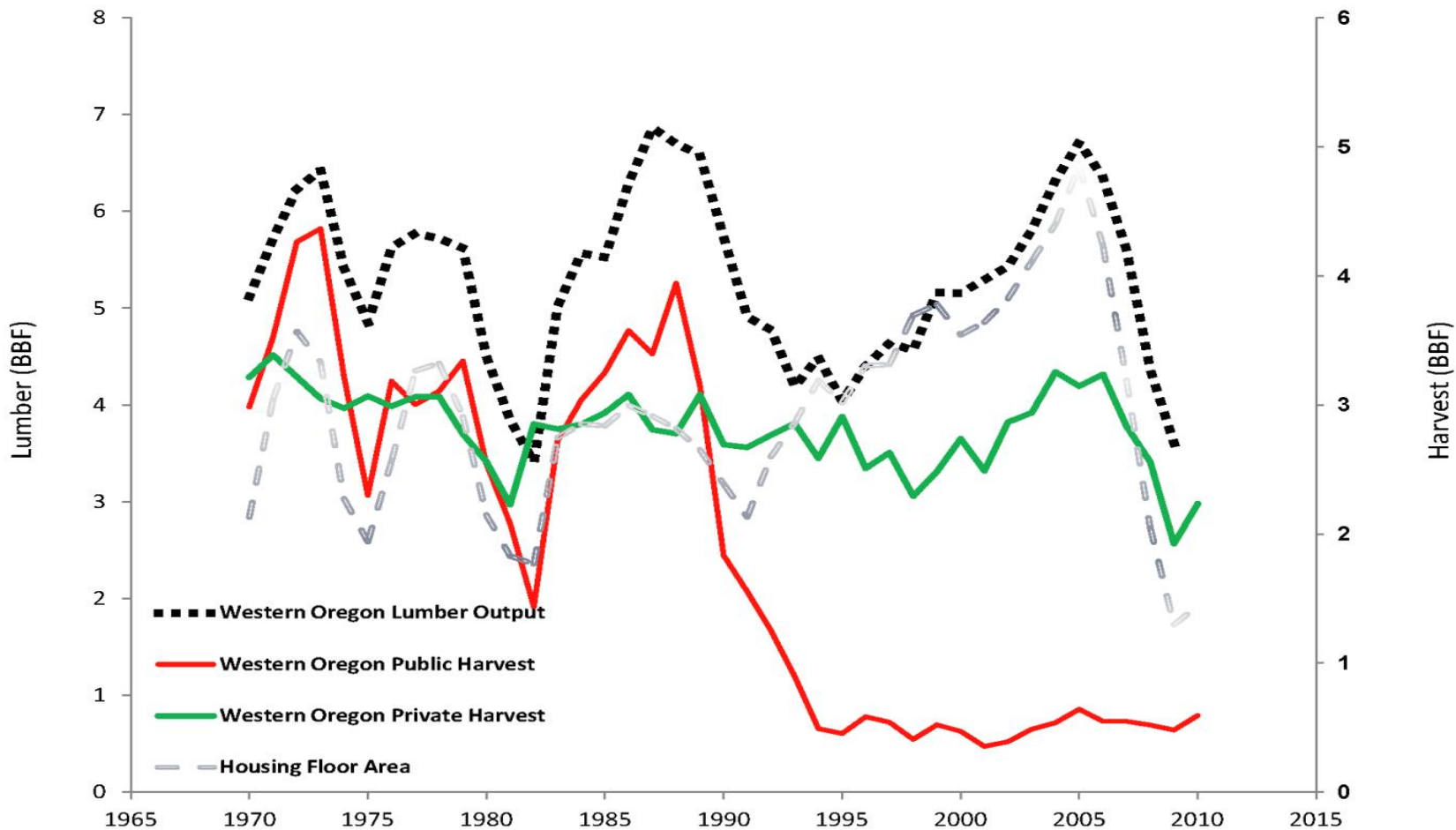
Curry County Land Owners



Historical Context

- Historically, Southwestern Oregon (Coos, Curry, and Douglas counties), was one of the nation's most productive regions in terms of timber production and processing.
- Critical habitat area (CHA) designation has resulted in significantly reduced timber harvests on both public and private lands since the 1990s.

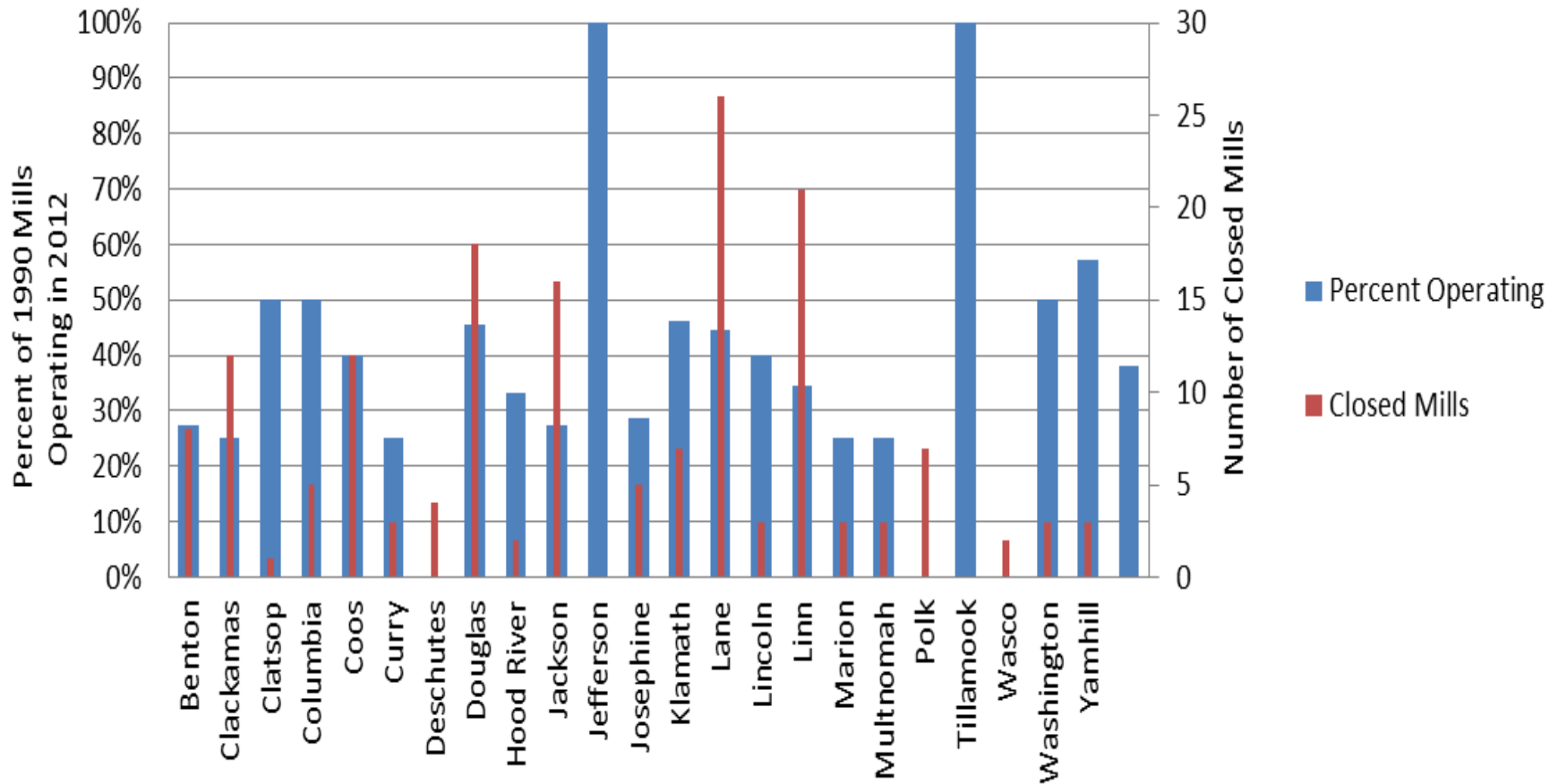
Lumber Output and Timber Harvest by Owner Group Western Oregon, 1970-2010



Economic Effect on Curry County

- ◉ Mill Closures
- ◉ Loss of over 700 Timber Industry jobs
- ◉ Health related issues-substance abuse
- ◉ High Unemployment
- ◉ Lack of funding for schools-many programs and teachers cut
- ◉ Reduction of funds to Counties dependent on Timber Revenues
- ◉ Public Safety is compromised

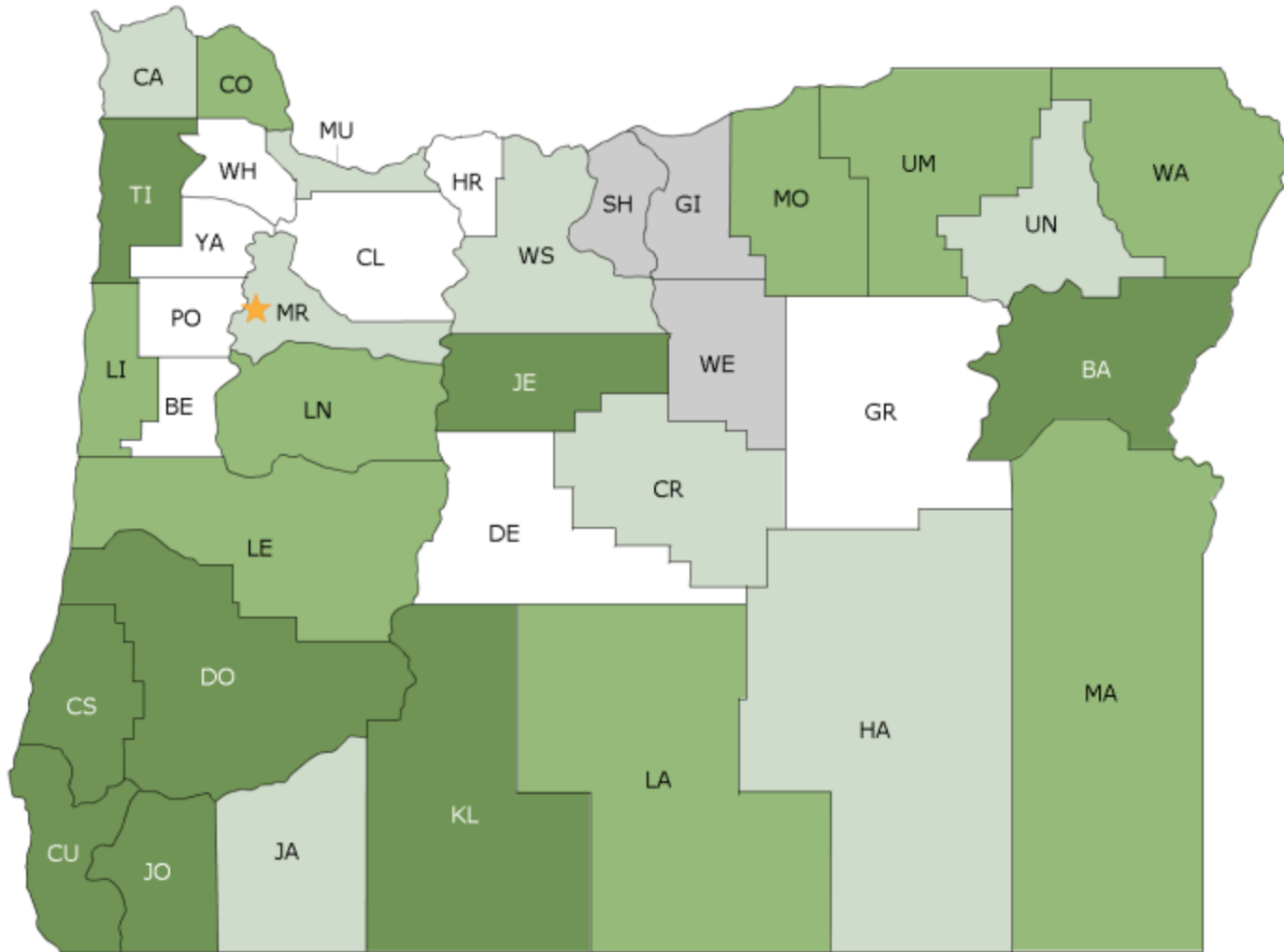
Oregon Counties' Operating Mills 1990 vs. 2012



Curry Lumber and Wood Product Employment 1976-2011



2012 Health Outcomes - Oregon



Rank 1-8 Rank 9-16 Rank 17-25 Rank 26-33 Not Ranked



Can Economic Development in Curry County alone solve our financial problems?

The answer is no.



- New revenue must be realized in order to keep County Services functioning for our citizens
- An estimated \$4,525,000 is needed to have the minimal adequate levels of County Law Enforcement Services

Will Development Replace Secure Rural Schools (SRS) Payments?



- The median value home in Curry County has a real market value (RMV) of \$187,000 and an assessed value (AV) of \$168,000.

- How many new median valued homes would it take to generate \$4.525 million in property tax for Curry County.

- $\$168,000 \times \$0.5996 / 1000$ (county tax rate) = \$101 Tax

$$\$4,525,000 / 101 = 44,800 \text{ New Homes}$$

Number of New \$187,000 RMV (Real Market Value) Homes it would take to Generate \$4.525 Million

There are approximately 11,000 single family homes in Curry County today.



- \$2,000,000 RMV = \$1,600,000 AV
- $\$1,600,000 \times \$0.5996 / 1000$
= \$960 tax

$$\$4,525,000 / 960 = 4,714 \text{ New McDonald's}$$

Number of New \$2,000,000 RMV
McDonalds Restaurants to Generate
\$4.525 Million

Curry County currently has one McDonalds Restaurant



- \$100,000,000 RMV
= \$80,000,000 AV
- \$80,000,000 x 0.5996/1000
= \$47,968 Tax

$$\$4,525,000 / 47,968 = 94 \text{ New } \$100 \text{ Million Golf Resorts}$$

Number of New \$100,000,000 RMV Golf Resorts Required to generate \$4.525 Million

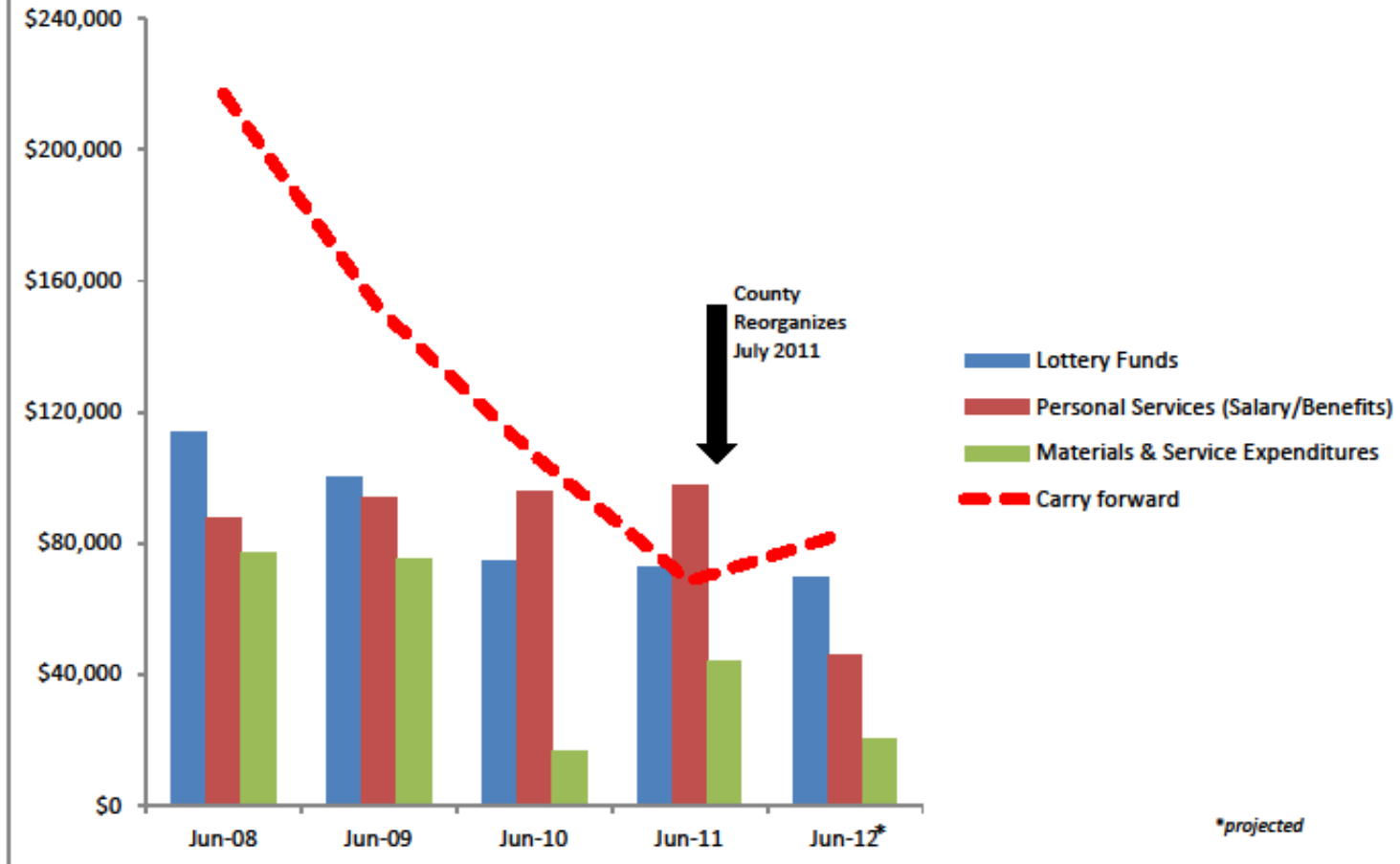
Proposed Golf Resort at Crook Point expected RMV \$25,000,000. **377 Golf Resorts** of this value would be required to generate \$4.525 million.

Curry County currently has two Golf Courses with values less than \$10 million.

What have we done to address the problem?

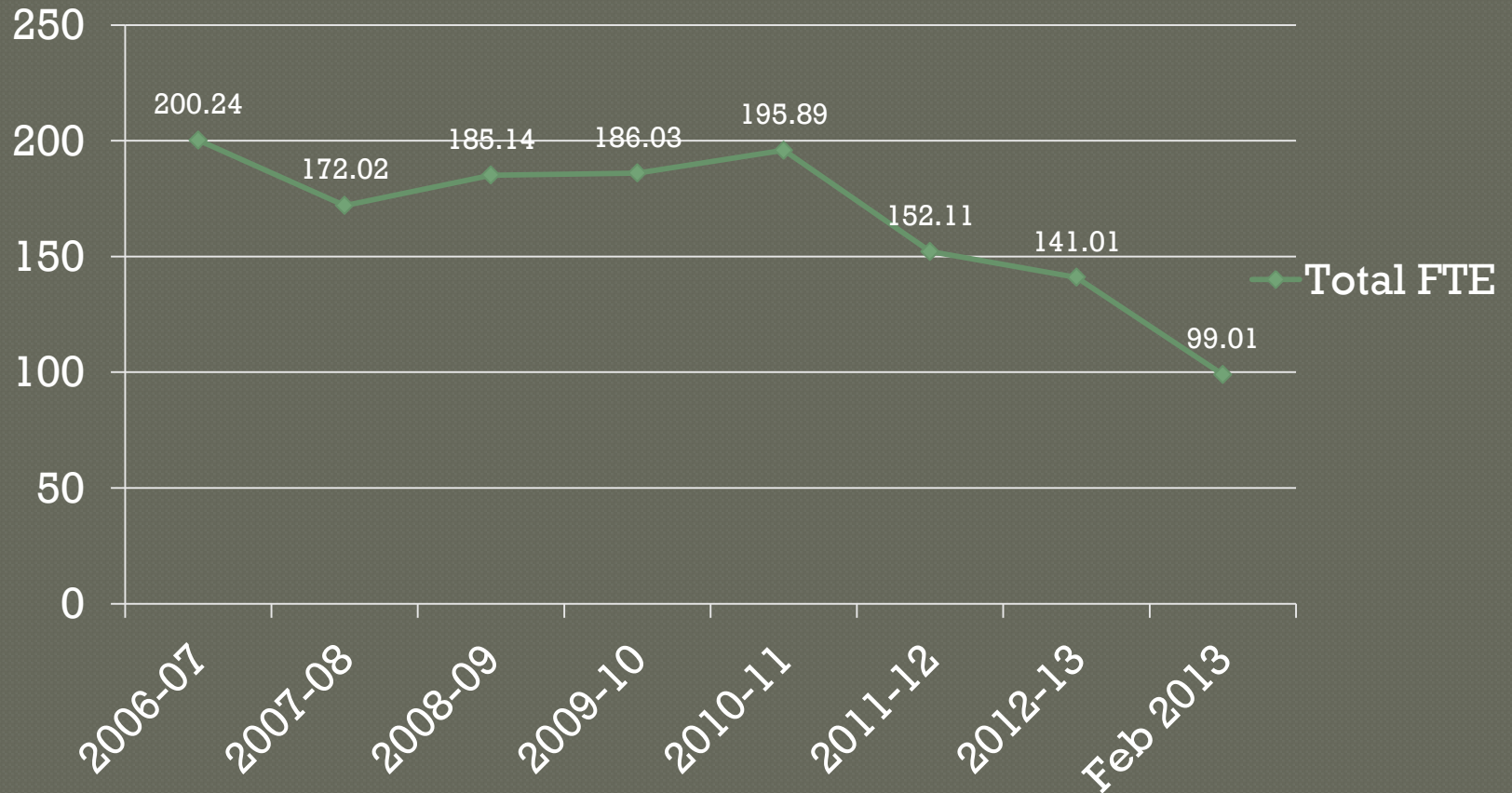
- Restructured County Government – Combined departments and services
- Reorganized Commissioner's office, Economic Development and County Counsel offices
- Transferred County Services to private, non-profit entities (Curry Community Health, Pennies for Pooches, Home Health and Hospice)
- Reduced County Services – Layoff of employees
- Limited COLA Increases Since 2009
- Citizen's Committee
- Oregon's Kitchen Table Project
- Revenue Ballot Measures such as Measure 8-71

Economic Development - YTD Actuals



Curry County's Full-time Equivalent (FTE) Employment Rate

Total FTE



\$2.1 Million County General Fund Budget Proposal

Approx. 40+ FTE positions eliminated

Jail could be closed/911 Communications Closed

<u>Department</u>	<u>Elected</u>	<u># FTE</u>	<u>Cost to GF</u>
Board of Commissioners	3-EO	.85-fte	\$ 330,454
Clerk-Elections/Recording	1-EO	2.85-fte	\$ 209,853
Treasurer	1-EO		\$ 109,110
Assessor and Taxation	1-EO	5.2-fte	\$ 252,487
Tax Collection			\$ 28,000
District Attorney, Victims Assist	1-EO	2-fte	\$ 188,068
Surveyor	1-EO		\$ 10,613
Sheriff	1-EO		\$ 151,271 (the Sheriff with
Patrol/Civil		2-fte	\$ -materials &services)
Incarceration		50000 DOC Funds	\$ 100,791 (3 beds in Coos
Marine Patrol		2-fte	\$ - County)
Parole & Probation		4-fte	\$ -
Juvenile		5.2-fte	\$ 320,779
Emergency Services		1-fte	\$ 49,183
Admin Services costs are not included in the above numbers.			
County Counsel		.3 + .9-fte	\$ 74,657
Information Technology		1.5-fte	\$ 26,200
Telecom		0.3-fte	\$ 73,200
Accounting		1-fte	\$ 63,363
Payroll		1-fte	\$ 30,737
Occupancy -space utilities minor maint		1.5-fte	\$ 89,062
Bldg Repair & Const		.5-fte	\$ 66,614
Economic Development		1.25-fte	\$ -
Insurance			\$ 60,000
Total			\$ 2,184,442

What does this mean to our citizens and businesses in Curry County?

- *Further Reduction in Public Safety: Possible reduced Jail beds, 911 Dispatch, Layoff of Road Deputies, Reduction of Crime Investigation
- *DA Office: Reduced/Eliminated Prosecution of Non Measure 11 Crimes
- *Layoff up to 40 + County Employees – Further Economic Recession
- *Decrease in Property Values – Increase in Homeowners Insurance
- *Serious Decline in Tourism as a “Lawless County” Reputation Spreads
- *Further Reduction of School Programs
- *Reduced/Eliminated Juvenile Services
- *Reduction or Elimination of many other County Services

Thank You

