

Informational Meeting Child Welfare

Erinn Kelley-Siel, DHS Director

*Jerry Waybrant, Chief Operating Officer, Child
Welfare and Self Sufficiency*

February 20, 2013



Child Welfare Mission and Goals

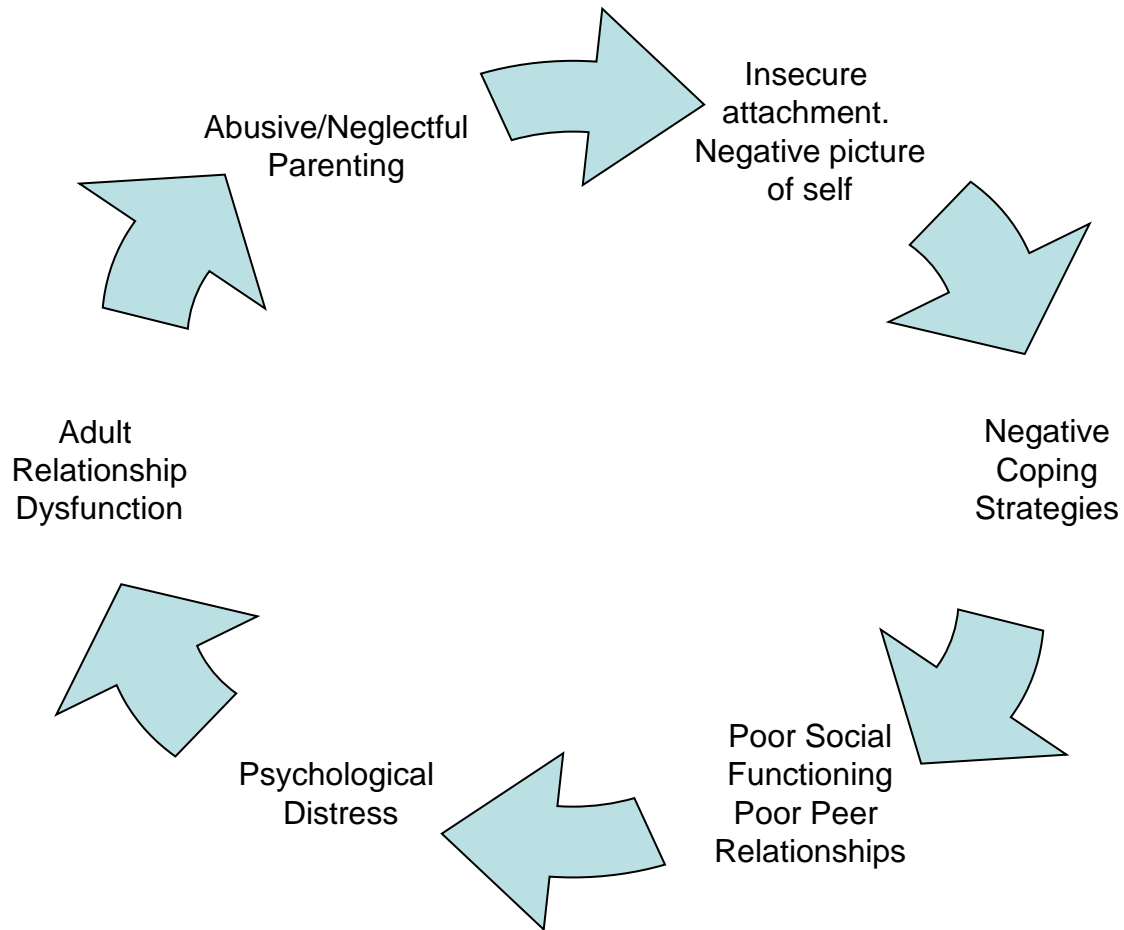
Mission:

Improve family capacity to provide safe and permanent living environments for children.

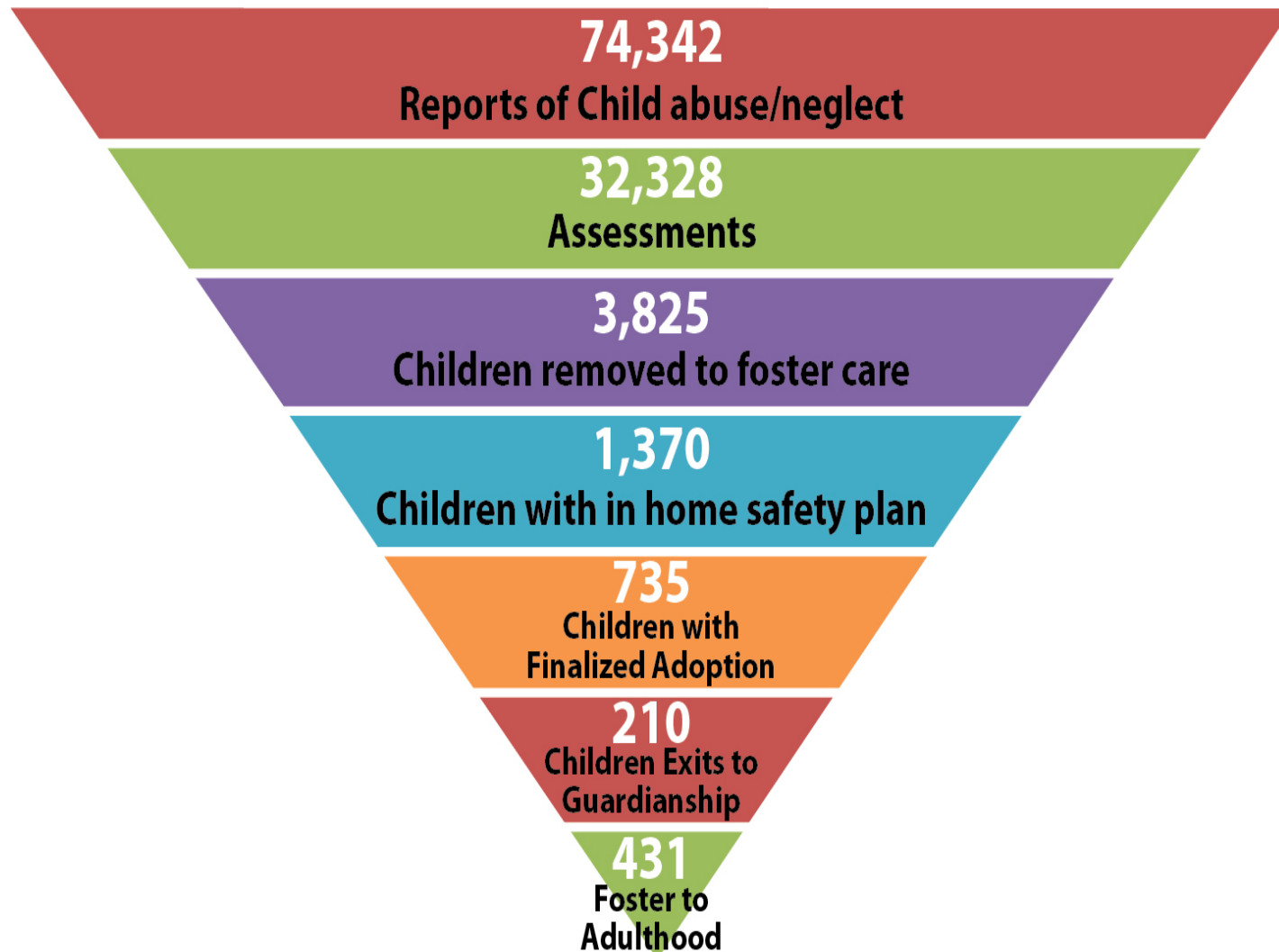
Goals:

- Help protect children and promote children's safety in their homes.
- Help children who are unable to live safely in their homes live in settings that provide safety, stability and continuity with their families.
- Expand program partnerships and increase the cultural competency of DHS staff and partners to better serve Oregon's diverse communities.
- Help prevent the current and future need for additional high end services.
- To mitigate trauma

Impact of Maltreatment throughout Life



Child Welfare Continuum (2011 data)



Abuse/Neglect & Foster Care Entry Drivers

- Most substantiated child abuse/neglect in Oregon is neglect (31.4%)/“threat of harm” (TOH)(49.6%)
- Statewide, removal rate of children is 35%; removal rate for neglect is 52.4%, removal rate for neglect & TOH 63.6%.
- At 44%, Alcohol and Drug issues were the largest single family stress factor when child abuse/neglect was present; next most common stressors were Domestic violence (33%), and Parental Involvement in Law Enforcement (27%)
- In 2010, approximately 65% of the 8,200 children in child welfare out of home care came from families that would qualify for TANF.
- In the third Quarter of 2010 a total of 1,253 children entered foster care. Of those, 36.6% (or 458) received TANF prior to entering foster care. This percentage is up from 28% in the last Quarter of 2007 and is increasing.

Progress Indicators

Description	2007	2011	% Change
Number of Children in Foster Care	9,548	8,882	-7.00%
Percent of Children with Relatives, of All Foster Care	19.10%	27%	41.40%
Percent of Victims Served Who were Served In Home	23.60%	26.40%	11.90%
Absence of Maltreatment of children in foster care	99.10%	99.10%	0%
Absence of Repeat Maltreatment	92.50%	95.20%	2.90%

Progress Indicators - 2011

- Number of children entering foster care in 2011 was the lowest in the past 5 years - a 7% decrease from 2010.
- In 2011, 67% of child victims remained safely at home after a founded incident of abuse or neglect.
- Work with culturally-specific providers beginning to pay off in terms of reducing disparities and increasing family stability and child safety for children of color; In 2011 fewer African American children experienced foster care and of those who came into care, a much higher percentage were placed with family.
- The percentage of children leaving foster care to be reunited with their families increased from 63.2% to 64.1%.
- 13 Oregon counties decreased their foster care placement rate in 2011, and 17 Oregon counties reduced their overall foster care population that same year.



Foster Care: Safety, Health, Education, Transitions

- Safety: Foster Home Reviews, SAFE home study.
- Stability: In 2011, 85% of newly certified families specially certified for specific child(ren); 55% of foster parents now child-specific.
- Health: In 2008, 20% of children in care prescribed psychotropic medications; in 2010, number down to 14%.
- Education: K-12 grant/collaboration; Tuition Waivers
- Transitions: DMV partnerships, credit reports, YTP



Opportunities Ahead

- Community Partnerships – local, state
- SB 964 (2011): Strengthening, Preserving and Reunifying Families Implementation Statewide
- Differential Response
- Enhanced supports for foster parents, providers
- Alignment – Health Transformation, Education/Early Learning, Developmental Disability Programs
- Improved Indian Child Welfare Act Compliance
- Prevention Reinvestment Strategy