

INSTANT RACING

Enhancing Tradition Through

Technology

Presented by The Stronach Group

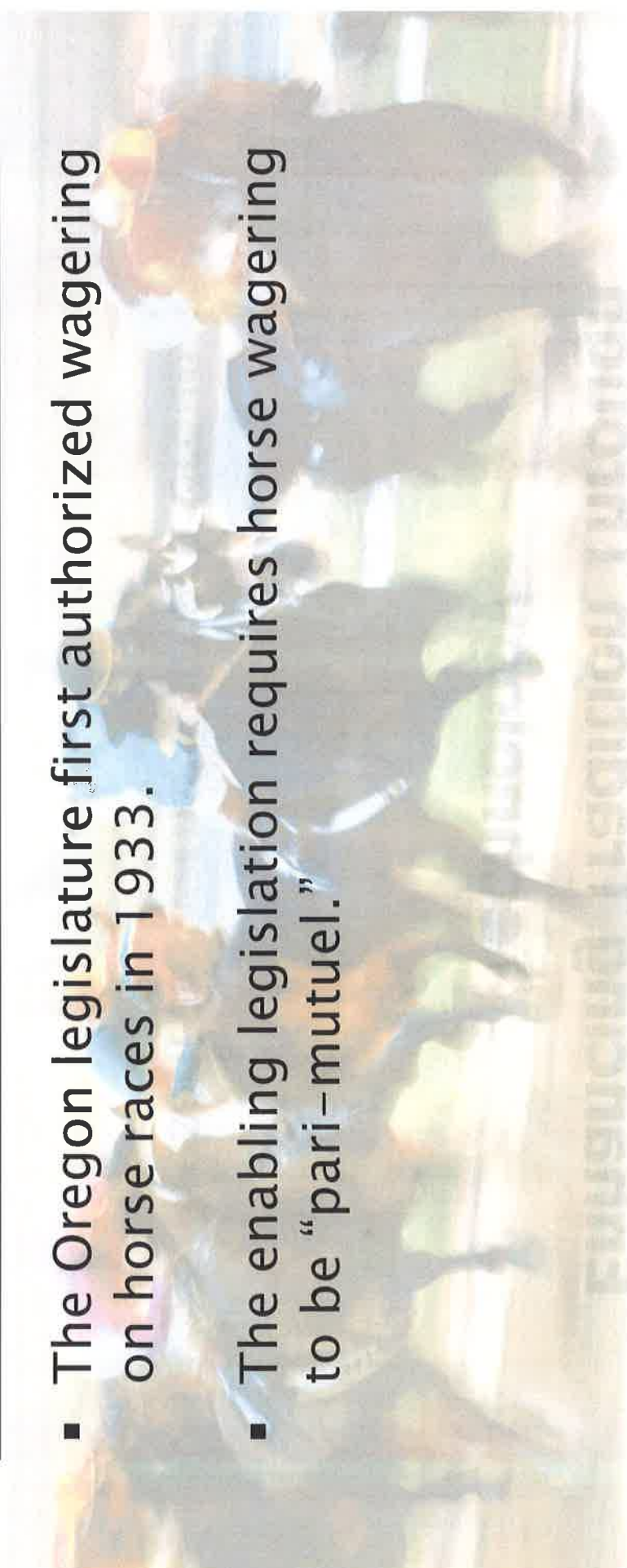
and

Portland Meadows



Oregon's Tradition of Horse Racing

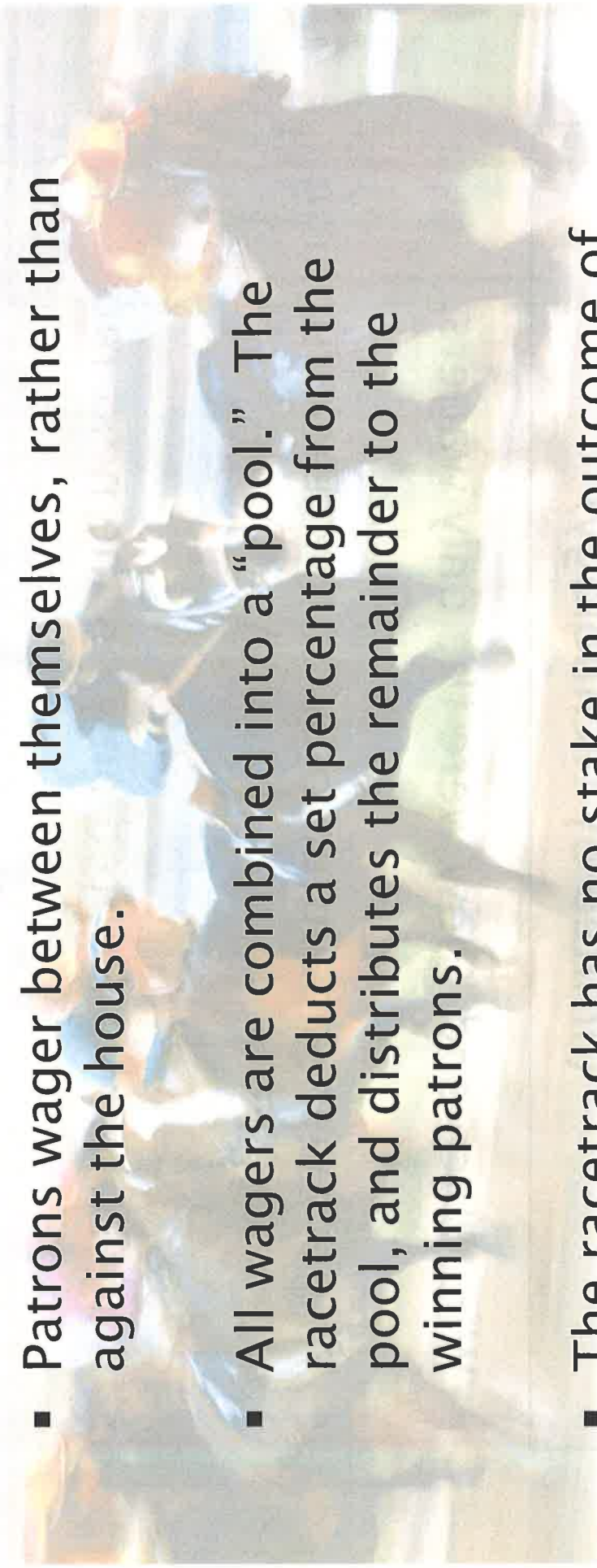
- The Oregon legislature first authorized wagering on horse races in 1933.
- The enabling legislation requires horse wagering to be “pari-mutuel.”



WILLIAM W. B. CLINE

What is Pari-Mutuel Wagering?

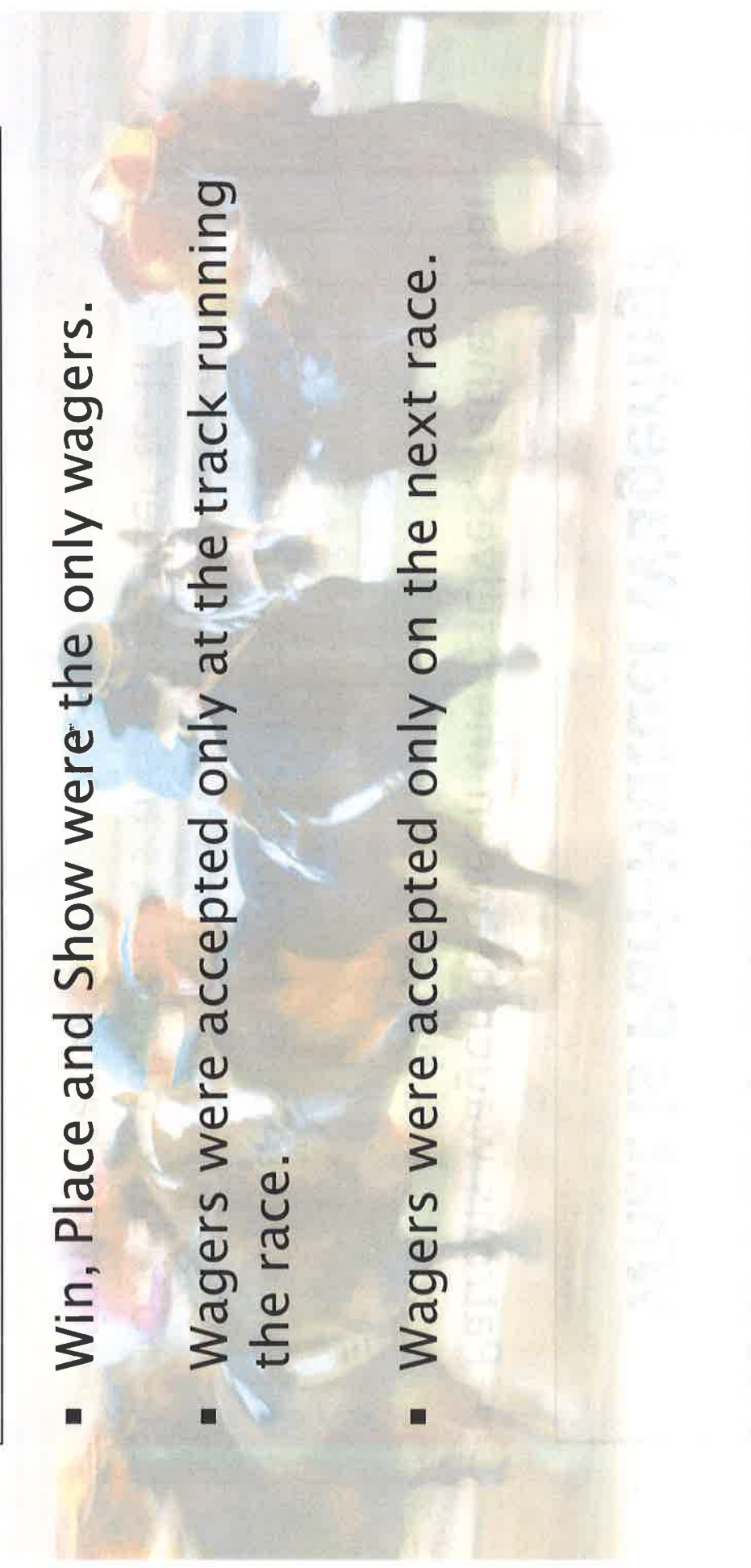
- Patrons wager between themselves, rather than against the house.
- All wagers are combined into a “pool.” The racetrack deducts a set percentage from the pool, and distributes the remainder to the winning patrons.
- The racetrack has no stake in the outcome of the race or the wagers.



Original Wagering Options

(limited by technology)

- Win, Place and Show were the only wagers.
- Wagers were accepted only at the track running the race.
- Wagers were accepted only on the next race.



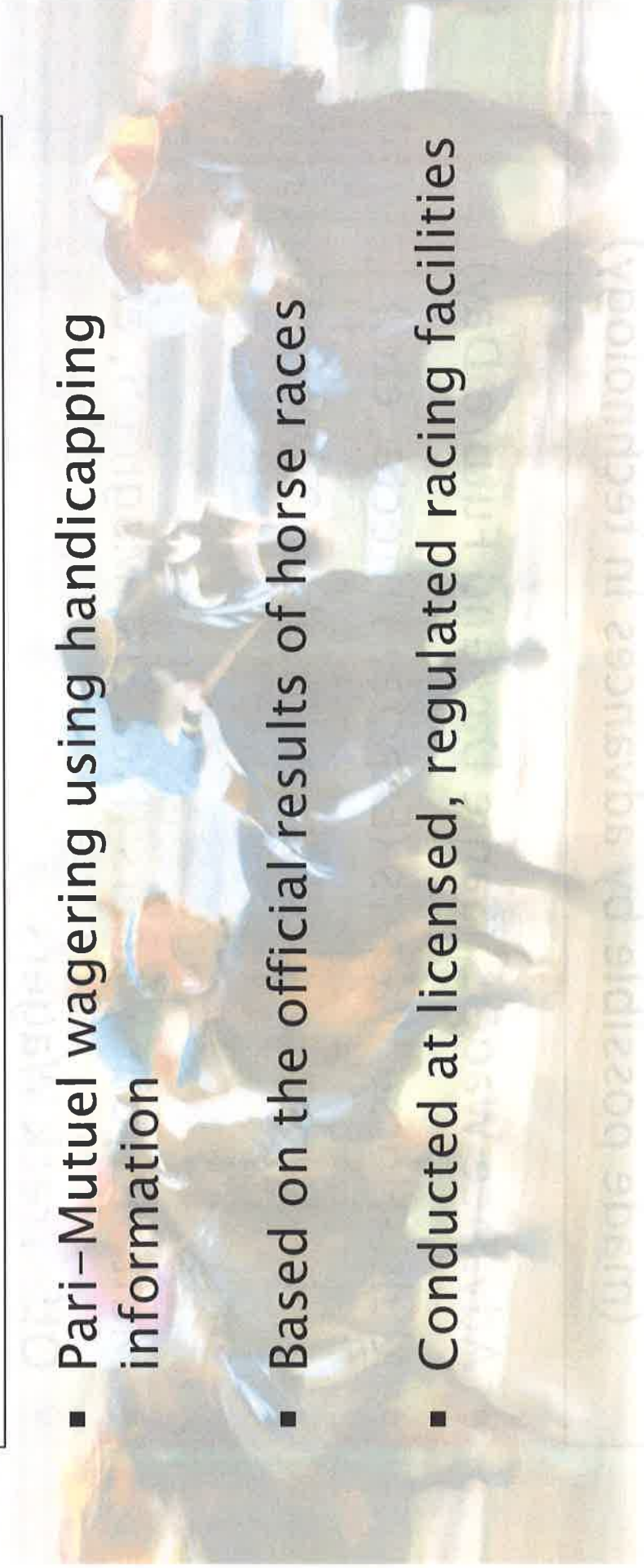
Today's Wagering Options

(made possible by advances in technology)

- Advance Wagers (Same Day and Future Day)
- Multi-Horse Wagers (Exacta, Trifecta, etc.)
- Multi-Race Wagers (Daily Double, Twin Trifecta, etc.)
- Multi-Payout Wagers (Pick Six, Magna 5, etc.)
- Off-Track Wagers
- Self-Service Tote Terminals
- Instant Racing

What Is Instant Racing?

- Pari-Mutuel wagering using handicapping information
- Based on the official results of horse races
- Conducted at licensed, regulated racing facilities



How is Instant Racing Different From Traditional Horse Wagering?

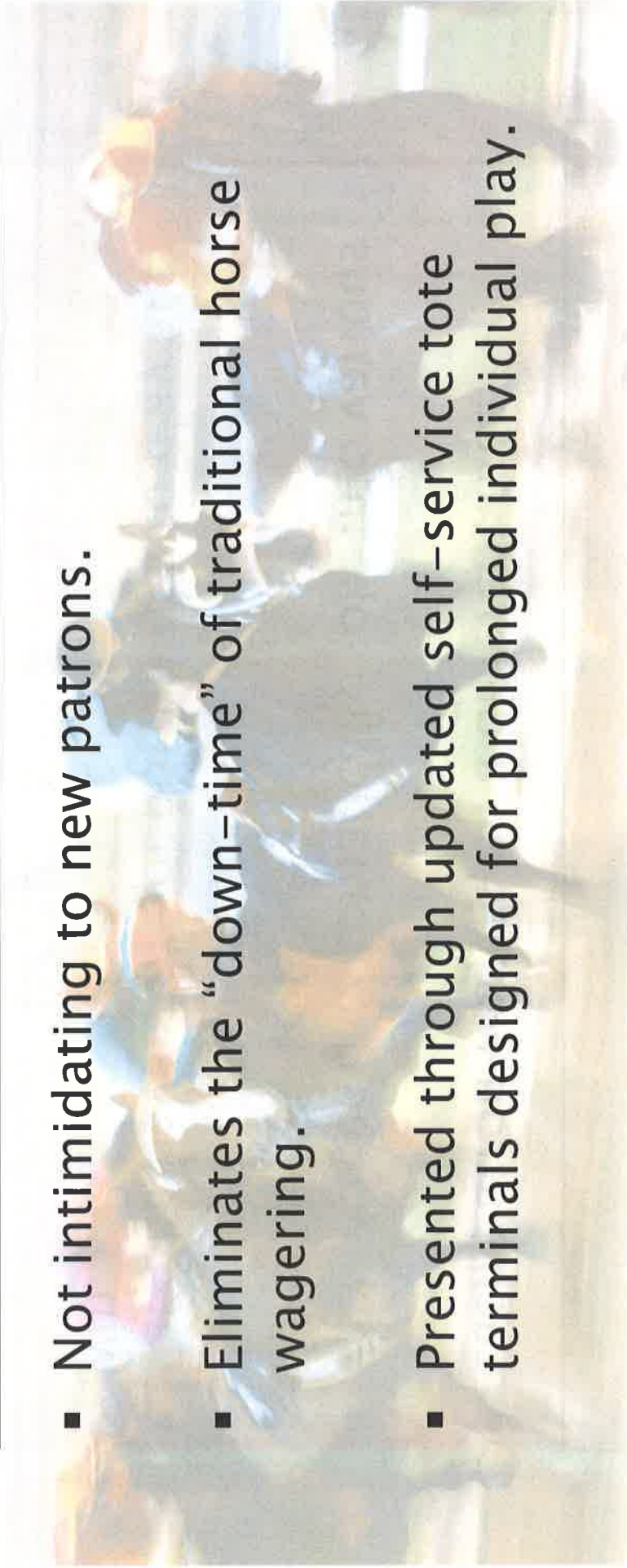


Historic Races

- The Instant Racing system contains over 200,000 previously run horse races.
- When a race is presented to a patron for wagering, all identifying information is withheld from the patron until after the wager has been irrevocably placed.
- Although the identities of the race and the horses are withheld from the patron, the patron is provided with **actual handicapping information** to use in making an informed

The Benefits of Technology

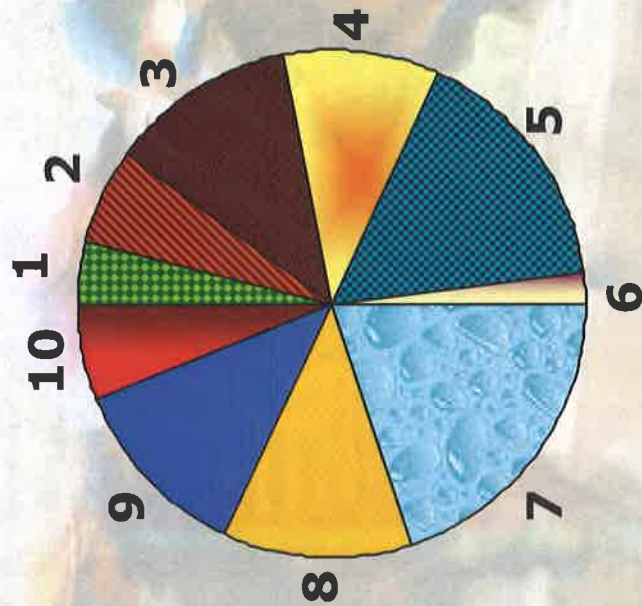
- Not intimidating to new patrons.
- Eliminates the “down-time” of traditional horse wagering.
- Presented through updated self-service tote terminals designed for prolonged individual play.



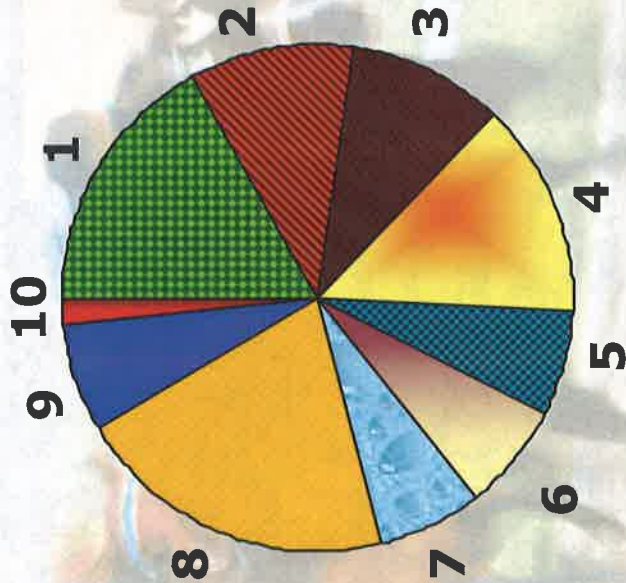
The Benefits of Technology

- Each patron wagers on a different race.
- Each wager is automatically split into various pari-mutuel pools.
- Patrons have more opportunities to play and win.
- Patrons can increase their chance of winning by using the handicapping information provided for each race.

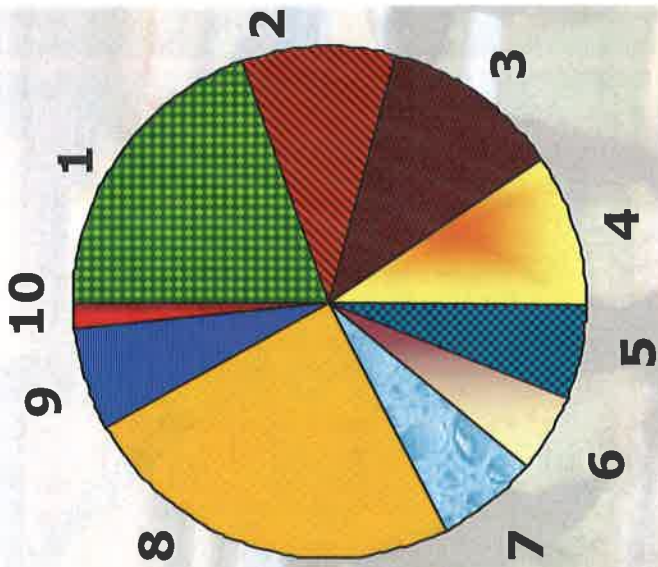
Racing Daily Form



Lifetime Earnings



**Races Won,
Same Year**



**Percent 1st - 2nd
Finishes - Lifetime**



POST TIME

CREDIT

\$0.00

**CASH
OUT**

HELP

SHORT RACE

LONG RACE



THOR'S WIND

PLAY

PLACE YOUR PARI-MUTUEL WAGER

POST TIME • POST TIME • POST TIME • POST TIME • POST TIME • POST TIME

©Copyright 2000, RaceTech, LLC PATENT PENDING



50¢ PLAYS PICK 4 JACKPOT

Pick 4 Jackpot
(BET MAX)

319.50

Pick 4 Consolation

31.95

1ST

2ND

3RD

Largest Qualifying Pool Wins.



Current Pools

3 Exact Order	8.50
Top 2 Exact Order	1.25
Top 2 Picks 1st, 2nd or 3rd	0.35
3 to Get Top 2	0.50
3 to Get 1st, 3rd	0.35
Top Pick Wins Race	0.25

Your Picks

8 Ways To Win!

CREDIT \$6.50

To play, press BET MAX

Select Your Horses

1

2

3

4

5

6

7

8

9

10

CLEAR SELECTIONS

EXIT TO MENU

HELP

BET

BET MAX

START





Pick 4 Jackpot (BET MAX) **433.10**

Pick 4 Consolation **43.30**



Your Picks

SELECT
1st



Current Pools

3 Exact Order	19.85
Top 2 Exact Order	1.25
Top 2 Picks 1st, 2nd or 3rd	0.35
3 to Get Top 2	0.90
3 to Get 1st, 3rd	0.70
Top Pick Wins Race	0.25

8 Ways TO Win!

Select Horse to Finish First

BET \$0.50 CREDIT \$6.00

Select Your Horses



CLEAR SELECTIONS

EXIT TO MENU

HELP

BET

BET MAX

START





Pick 4 - Jackpot
(BET MAX)

437.50

Pick 4 - Consolation

43.75

1ST

2ND

3RD

8

2

7



Current Pools

3 Exact Order **2.50**

Top 2 Exact Order **1.80**

Top 2 Picks 1st, 2nd or 3rd **0.35**

3 to Get Top 2 **0.50**

3 to Get 1st, 3rd **1.20**

Top Pick Wins Race **0.25**

Your Picks

Press **START** to begin

BET \$0.50 CREDIT \$4.75

8 Ways To Win!

Select Your Horses

1

2

3

4

5

6

7

8

9

10

CLEAR SELECTIONS

EXIT TO MENU

HELP

BET

BET MAX

START





Pick 4 Jackpot
(BET MAX)

344.70

Pick 4 Consolation

34.40



Your Picks

Results

WINNER!

Largest Qualifying Pool Wins.



Current Pools

3 Exact Order 74.25

Top 2 Exact Order 3.20

Top 2 Picks 1st, 2nd or 3rd 0.35

3 to Get Top 2 0.50

3 to Get 1st, 3rd 0.35

Top Pick Wins Race 0.25

8 Ways to Win!

BET \$0.50 CREDIT \$4.25

Select Your Horses

1

2

3

4

5

6

7

8

9

10

CLEAR SELECTIONS

EXIT TO MENU

HELP

BET

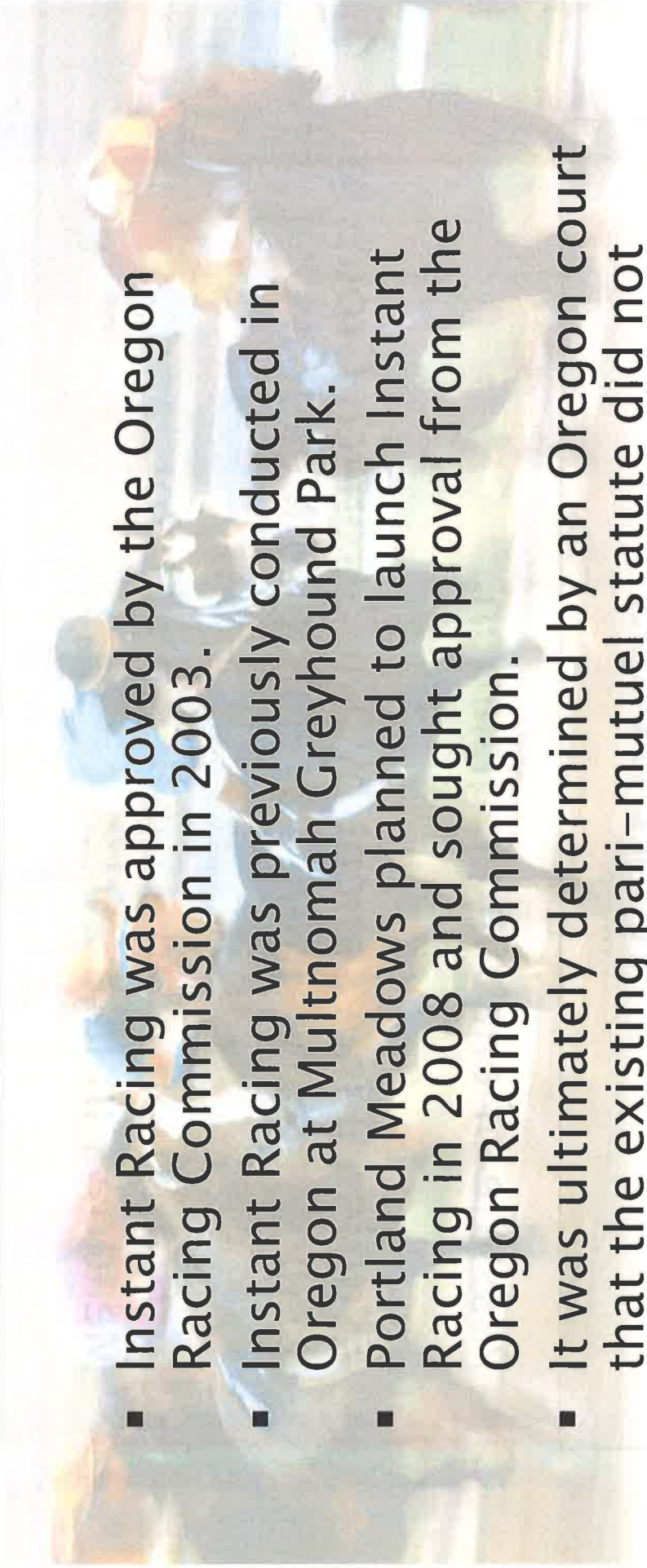
BET MAX

START



Instant Racing in Oregon

- Instant Racing was approved by the Oregon Racing Commission in 2003.
- Instant Racing was previously conducted in Oregon at Multnomah Greyhound Park.
- Portland Meadows planned to launch Instant Racing in 2008 and sought approval from the Oregon Racing Commission.
- It was ultimately determined by an Oregon court that the existing pari-mutuel statute did not cover Instant Racing.



Next Steps

- Passage of enabling legislation.
- Additional investment by The Stronach Group in facility improvements at Portland Meadows.
- Introduction of Instant Racing at Portland Meadows in late 2013.
- Promotion and marketing of Instant Racing as an additional amenity at Portland Meadows.

Instant Racing Enhancing Tradition Through Technology

