



# **Early Learning Division**

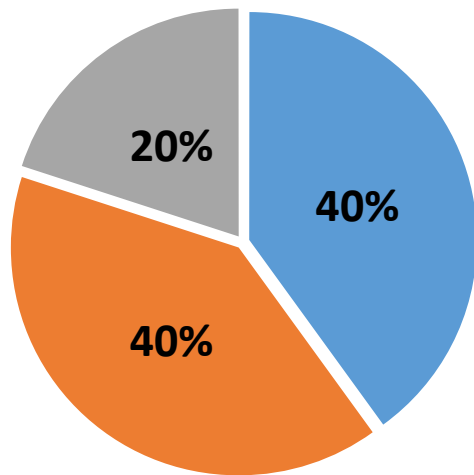
## **Ways & Means Presentation**

**April 29, 2013**

Jada Rupley, Early Learning System Director  
Pamela Curtis, Early Learning Council Chair

# 40/40/20

“The mission of education...includes achieving the 40/40/20 Goal by 2025...”

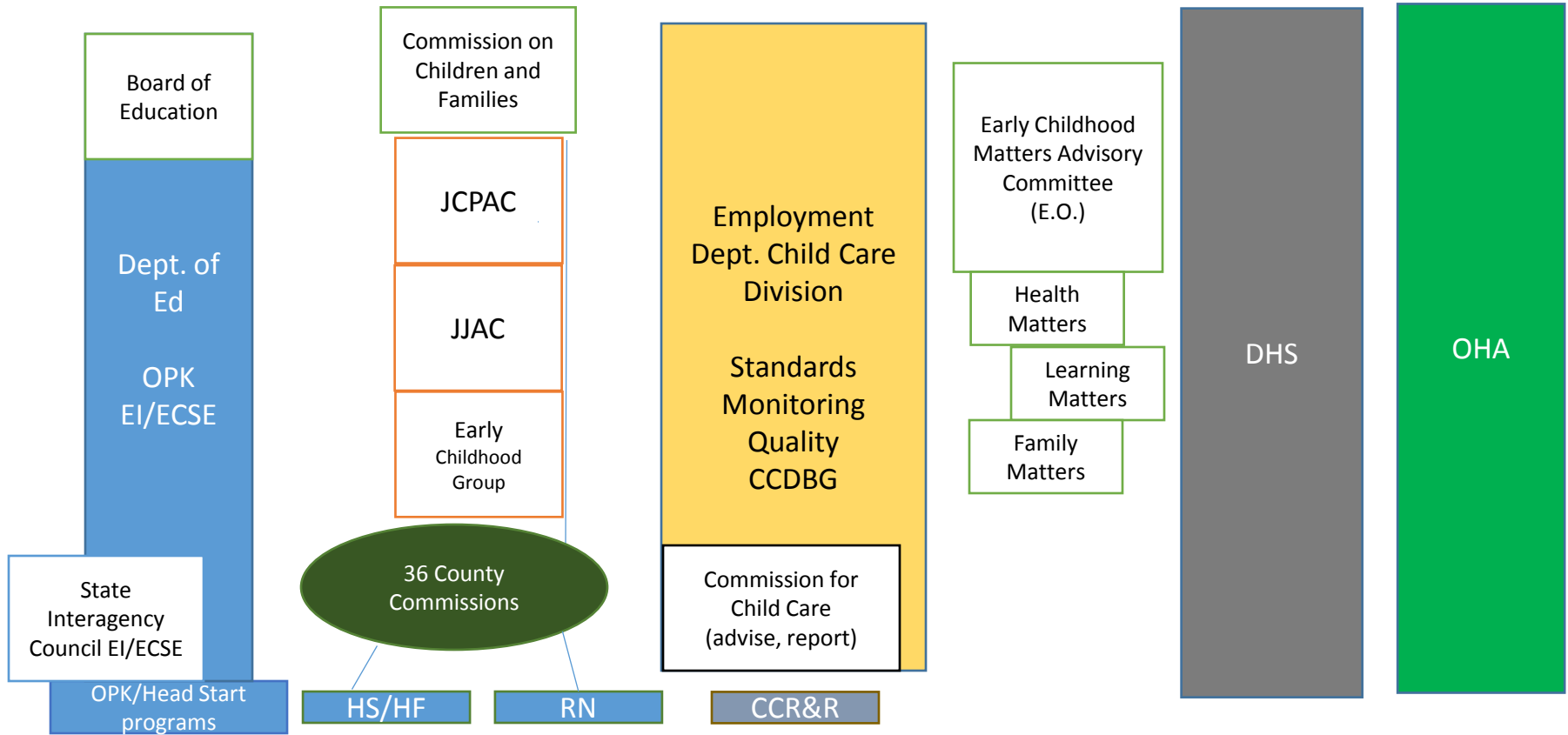


- **40%** of adult Oregonians will have earned a bachelor's degree or higher (now **30%**)
- **40%** of adult Oregonians will have earned an associate's degree or postsecondary credential (now **18%**)
- **20%** of all adult Oregonians have earned at least a high school diploma, an extended or modified diploma, or the equivalent of a diploma (now **42%**)

# Our Problem

- 45,000 children born in Oregon each year.
- Half of all Oregon births paid by Medicaid.
- **An estimated 4 in 10 kids are not ready for Kindergarten when they begin.**
- **Oregon is in the bottom 25% nationally** for reading and proficiency in 3<sup>rd</sup> grade and for high school graduation rates.

# Prior Early Learning Governance System (Before SB 909)



# Key Legislation

## 2011:

- **SB 909:** Created the Early Learning Council, charged with developing an outcome plan for Oregon's children.

## 2012:

- **HB 4165:** Directed improvements to early learning services and delegated ELC oversight of the Early Learning System.

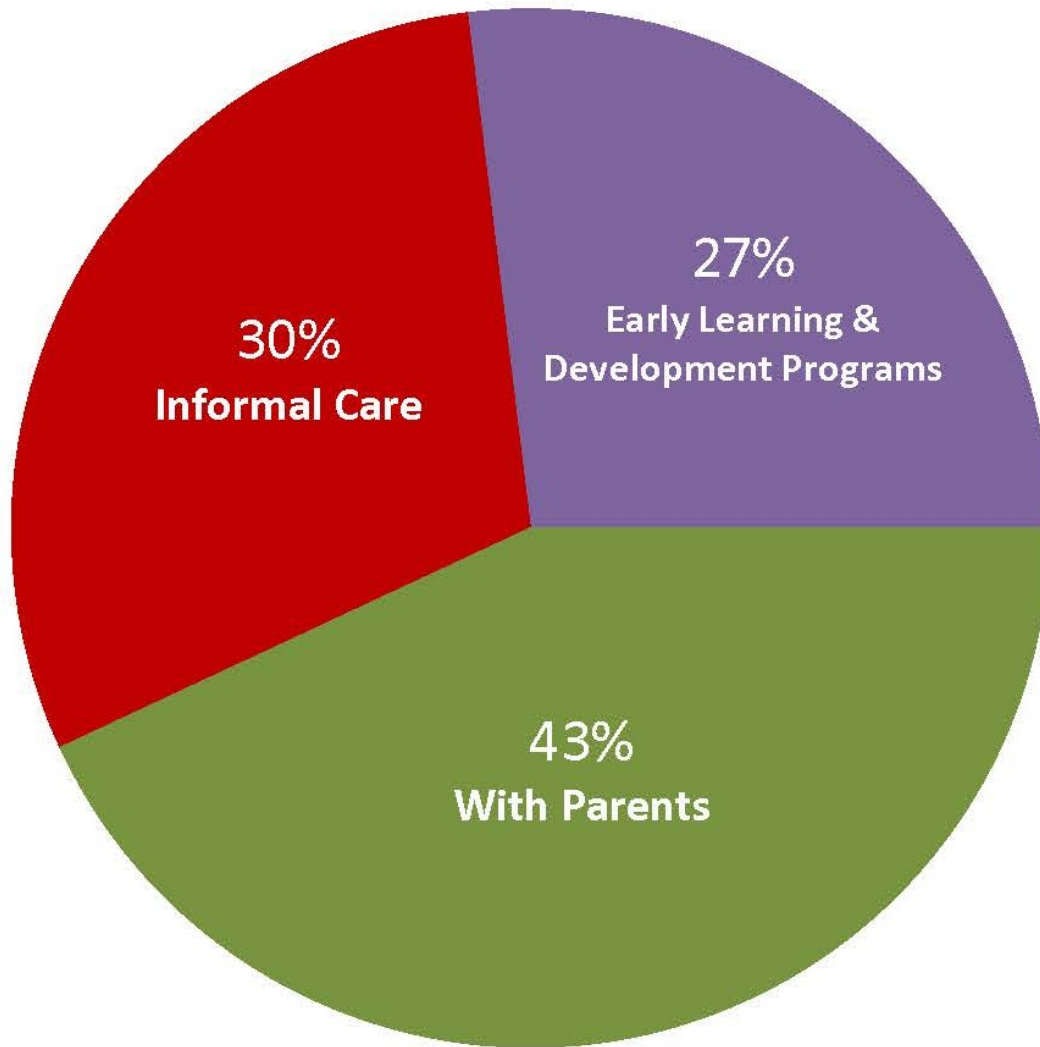
## 2013:

- **HB 2013:** Further direction for implementing the Early Learning System.
- **HB 3234:** Creates Early Learning Division within the Oregon Department of Education.

# Our Vision

- All children are ready for kindergarten and reading in 3<sup>rd</sup> grade.
- Children are raised in stable and attached families.
- Resources and services are integrated statewide.

# Where are Our Youngest Children?



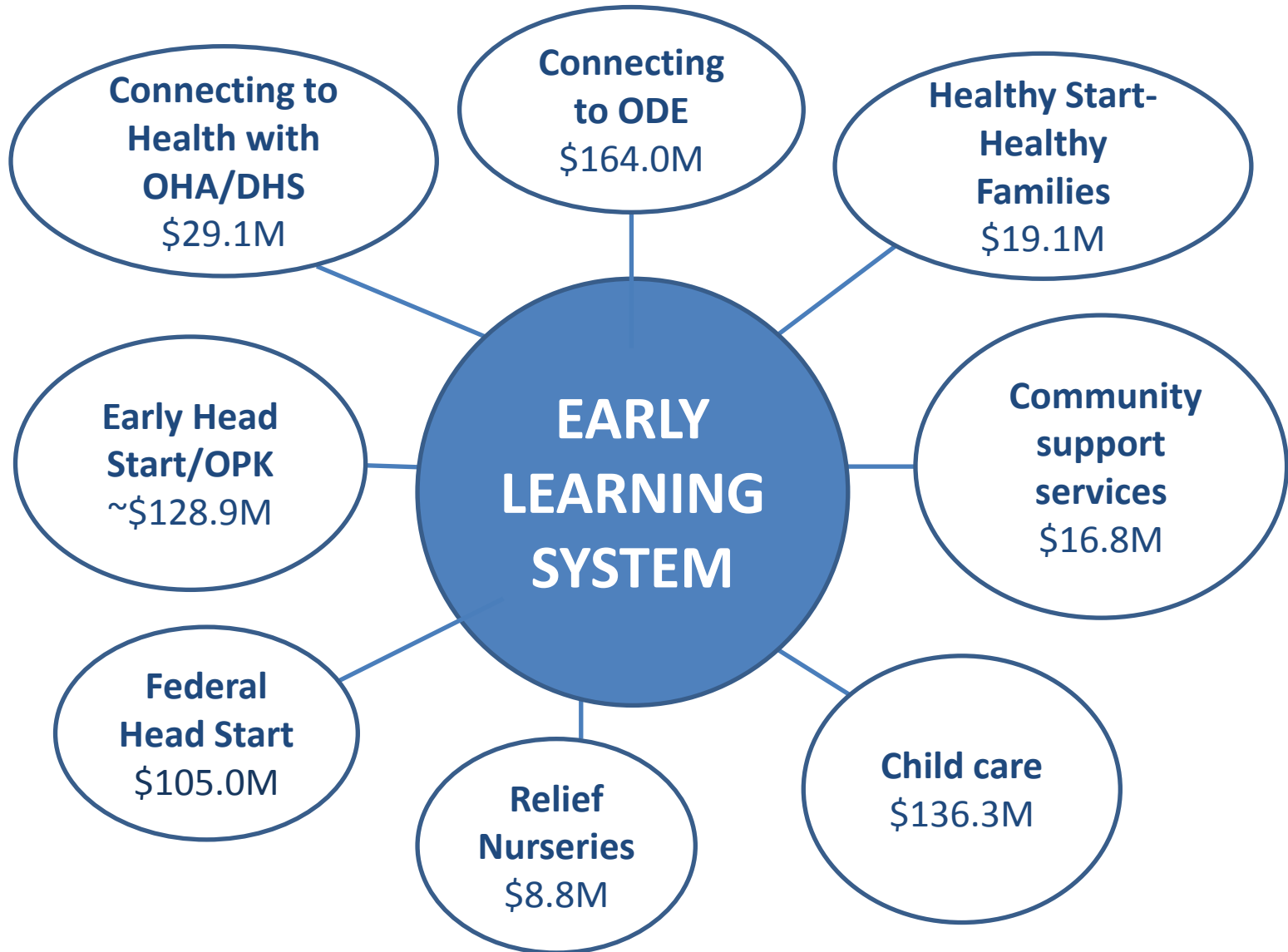
All Children Under the Age of 5

# Kindergarten Ready

1. Children are ready for school.
2. Schools are ready for children.



# Oregon Investments: The Early Learning System



# All Early Learning-Related Programs (2013-15)

Oregon Pre-Kindergarten.....	\$127.4	Relief/Crisis Nurseries.....	\$8.8
Early Head Start.....	\$1.5	Race to the Top.....	\$11.1
OKP/HS Administration.....	\$0.9	Social Impact Financing.....	\$0.8
Child Care Administration.....	\$1.6	ELC Administration.....	\$1.8
Child Care Licensing.....	\$36.2	<b>Other Programs:</b>	
Child Care Subsidies.....	\$100.1	▪ Employment-Related	
Children Youth & Families.....	\$1.7	Day Care.....	\$19.4
Great Start.....	\$1.7	▪ Babies First!.....	\$1.4
Healthy Start –		▪ Maternal Child Health.....	\$8.3
Healthy Families.....	\$19.1	▪ Early Intervention.....	\$37.3
Basic Capacity.....	\$10.0	▪ Early Childhood	
Family Preservation		Special Education.....	\$126.7
(Title IV-B2).....	\$3.4	<b>TOTAL</b>	
		<b>Early Learning Programs.....</b>	<b>\$519.5</b>

*(in millions, may not foot due to rounding)*

# Programs in Early Learning Division (2013-15)

Oregon Pre-Kindergarten.....	\$127.4	Relief/Crisis Nurseries.....	\$8.8
Early Head Start.....	\$1.5	Race to the Top.....	\$11.1
OKP/HS Administration.....	\$0.9	Social Impact Financing.....	\$0.8
Child Care Administration.....	\$1.6	ELC Administration.....	\$1.8
Child Care Licensing.....	\$36.2	<b>Early Learning Division .....</b>	<b>\$326.2</b>
Child Care Subsidies.....	\$100.1		
Children Youth & Families.....	\$1.7		
Great Start.....	\$1.7		
Healthy Start –			
Healthy Families.....	\$19.1		
Basic Capacity.....	\$10.0		
Family Preservation			
(Title IV-B2).....	\$3.4		

*(in millions, may not foot due to rounding)*

Oregon Health Authority/  
Department of Human Services  
Early Learning Programs (2013-15)

Babies First (OHA).....	\$1.4
Maternal Health (OHA) .....	\$8.3
Employment-Related Day Care (DHS).....	\$19.4
<b>Total.....</b>	<b>\$29.1</b>

*(in millions)*

# Other Department of Education Early Learning Programs (2013-15)

Early Intervention .....	\$37.3
Early Childhood Special Education .....	\$126.7
<b>Total.....</b>	<b>\$164.0</b>

*(in millions)*

# Oregon Early Learning: A Continuum of Services from Birth to Kindergarten

## Early learning's connection to health care

- Screening;
- Home visiting;
- Ages & Stages Questionnaire;
- Joint ELC/OHPB Subcommittee

## Strengthening families and keeping children safe:

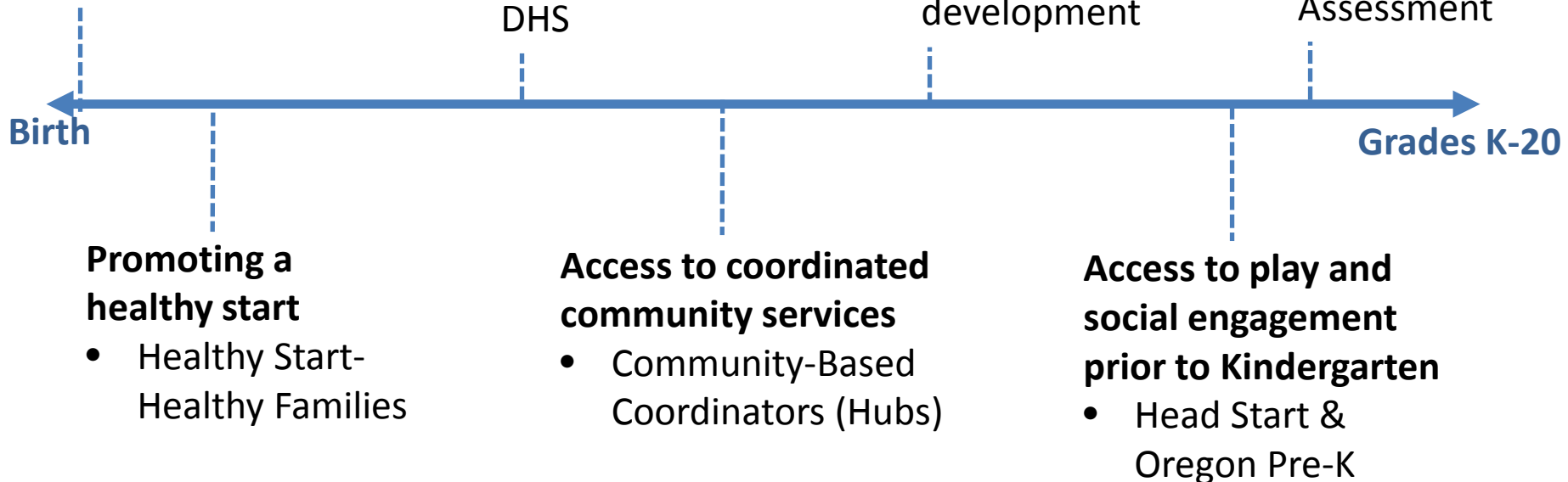
- Relief Nurseries
- Connections to DHS

## Improving child care:

- Child care & subsidy assistance;
- ERDC;
- QRIS & professional development

## Taking a look back to look forward:

- Kindergarten Assessment



# Kindergarten Assessment

## **Providing a path to guide a student's future needs:**

- Pilot in 2012, 16 elementary schools and 1,228 students.
- Statewide Operational Field Study begins Fall 2013 and will serve 42,500 children.
- Literacy, early math, sociability and behavior.
- Achievement Compact outcomes.

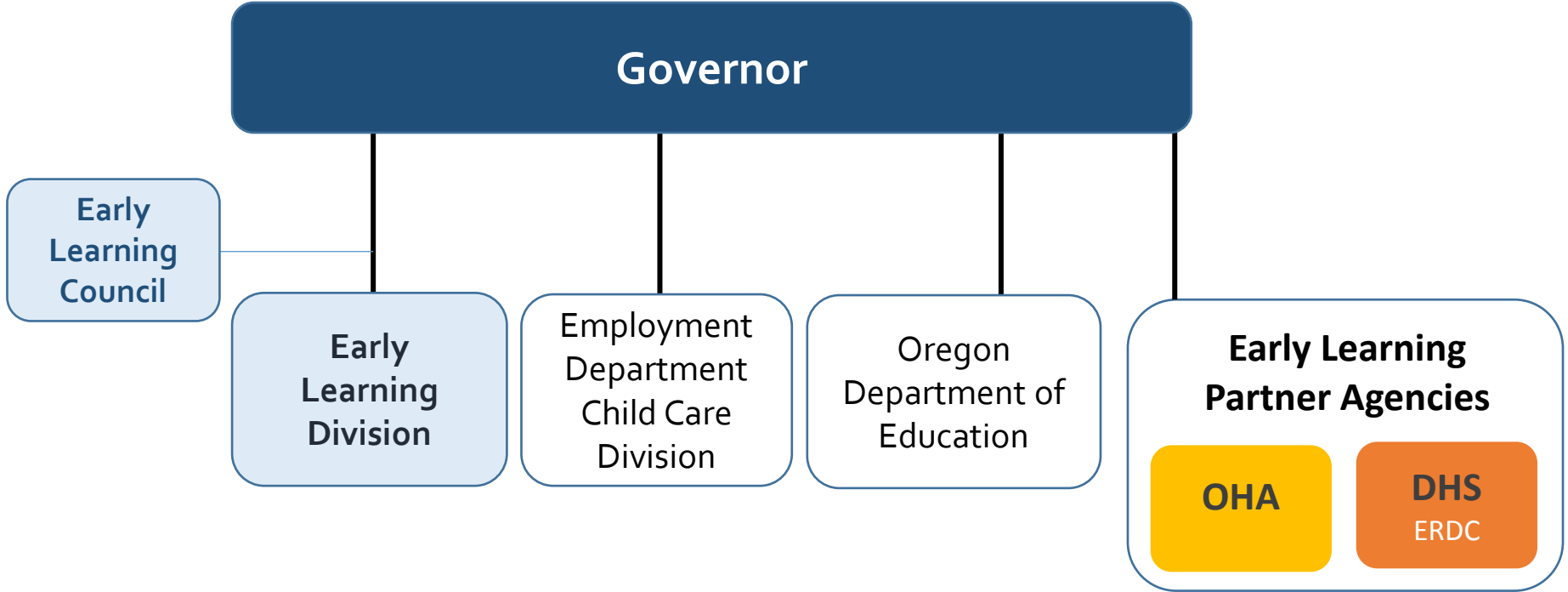
# HB 3234

**Becoming the Early Learning Division  
in the Oregon Department  
of Education.**

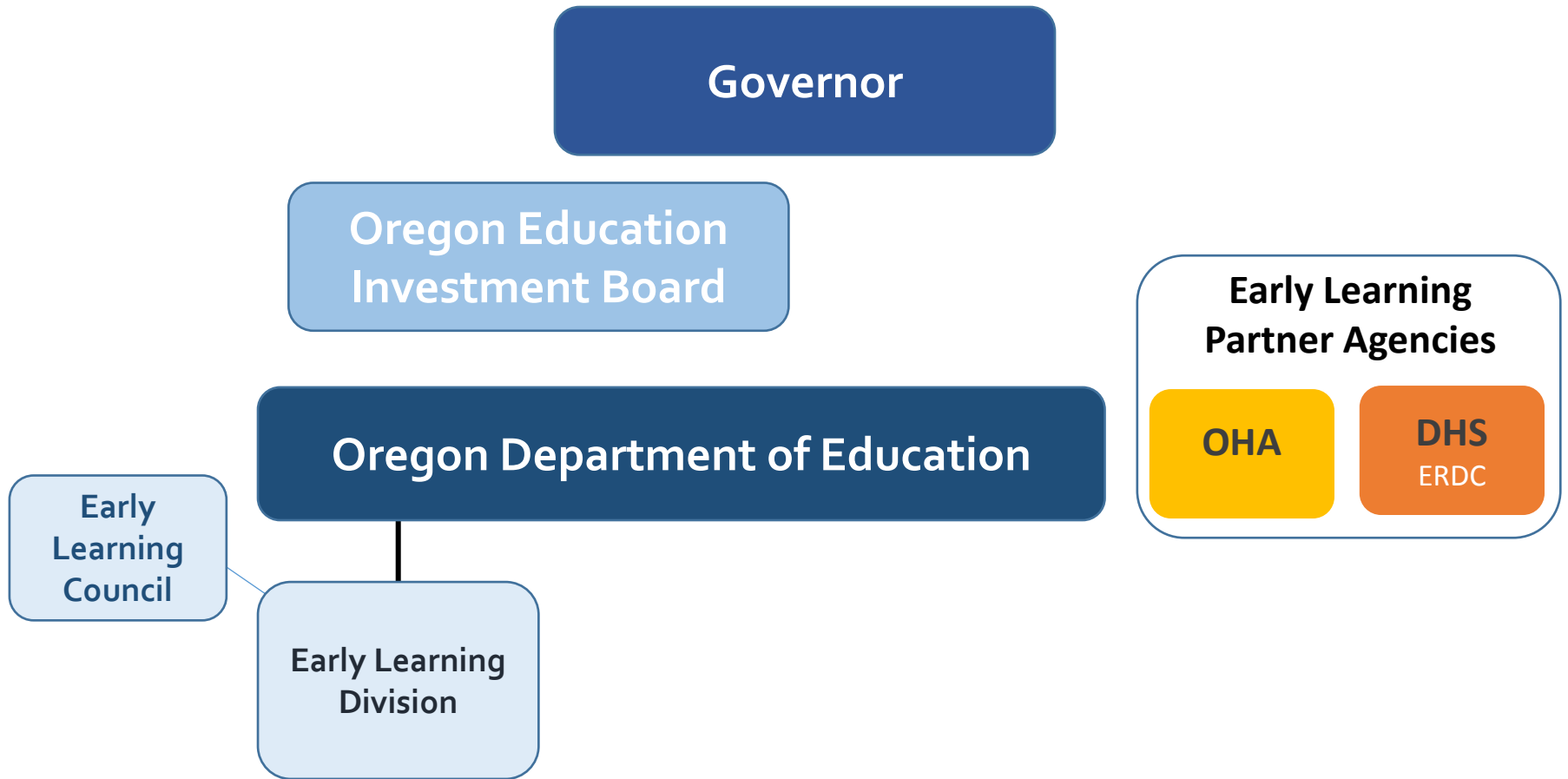




# Current Organization



# Organization Under HB 3234



# Overall Goals

**Purpose: Children ready for kindergarten**

## **Goals:**

- Connecting family and child health to early learning.
- Finding issues first and fast (screening).
- Improving the quality of child care, and increasing access to safe and healthy childcare.
- Providing access to high-quality services at the community level.

# Promoting a Healthy Start

**Purpose:** Healthy Start home-visiting provides information, resources and support to any first-time parent.

## **Goals:**

- Promote healthy childhood growth and development
- Support positive parent-child relationships
- Help families access community resources
- Provide parenting information and support

Healthy Start/Healthy Families: \$14.8 GF, \$19.1 M TF (2013-15 in millions)

# Child Care: Improving Quality

**Purpose:** To better support children's developmental needs.

## **Goals:**

- Quality Rating and Improvement System improves the quality of child care programs and awards a star rating to child care programs to help inform parents' decisions.
- Evidence-based approach to improve the quality of state-subsidized informal care.
- Professional development and training ensure early childhood educators and practitioners are properly trained.

Quality: \$0.2 GF, \$16.7 TF

Professional Development : \$0 GF, \$4.9 TF (2013-15, in millions)

# Child Care: Ensuring Health & Safety

**Purpose:** Child care programs are licensed to ensure children's health and safety while not in parental care.

**Goals:** Child Care Licensing -

- Ensures a baseline of health and safety in 4,500+ child care businesses.
- Ensures suitable adults care for children through a system of background checks.
- Confirms child care directors and providers meet ongoing training and professional development requirements.
- On-site follow up to public or parental concerns and complaints.

Licensing: \$3.7 GF, \$14.7 TF

(2013-15, in millions)

# Child Care: Affordability

**Purpose:** Making child care affordable to low-income families.

**Goals:**

- Child care subsidies provide assistance to low-income families in paying for child care:
  - Employment Related Day Care subsidies (ERDC).
  - Special Population subsidies.

Subsidy: \$0 GF, \$100.1 TF

(2013-15 in millions)

# Head Start & Oregon Pre-K

**Purpose:** Head Start and Pre-K programs measure children's progress towards school readiness.

**Goals:**

- Ongoing measure of knowledge, skills and behaviors predictive of school success.
- Oregon has adopted Head Start standards and is aligning with Common Core State Standards for K-12 education.

Oregon Pre-K Funding: \$127.4 GF, \$127.4 TF

Early Head Start: \$1.5 GF, \$1.5 TF

(2013-15, in millions)



# Relief Nurseries

**Purpose:** End the devastating cycle of child abuse and neglect by providing a therapeutic early childhood program.

## Goals:

- Reduce families' level of involvement with the child welfare system.
- Reduce the number of risk factors associated with child maltreatment.

Relief Nurseries: \$6.6 GF, \$8.8 TF

(2013-15 in millions)

# Race to the Top Grant

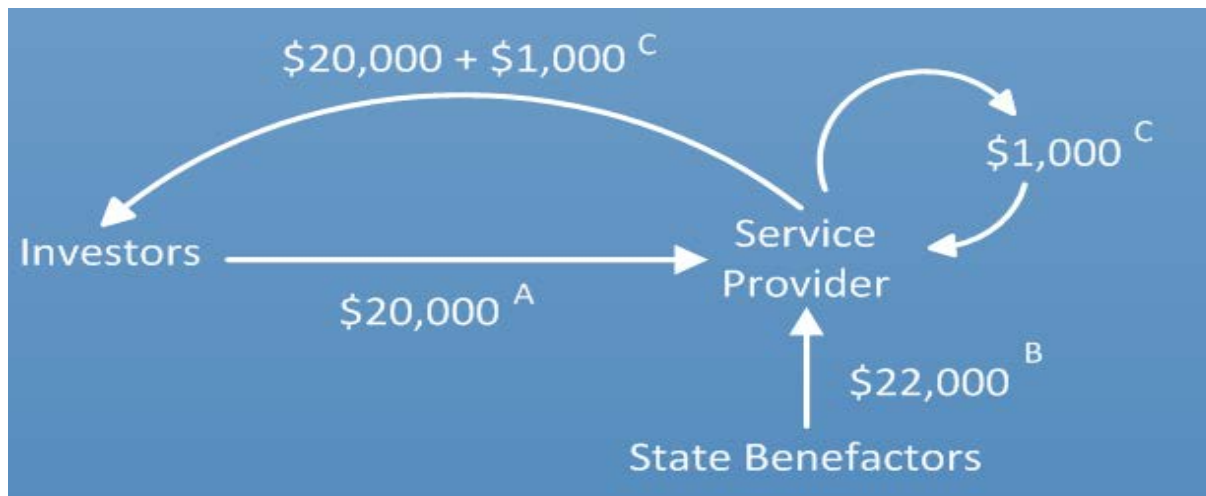
\$20.5 million over four years to strengthen the state's early childhood system:

- Kindergarten Assessment
  - Quality Rating and Improvement System
  - Health Screenings
  - Community-based coordinator implementation
  - Workforce development and training
  - Family and community access to services
- US Department of Education grant awards may provide additional funds.

Race to the Top Grant : \$0.0 GF, \$ 11.1 FF

(2013-15, in millions)

# Social Innovation Financing in Oregon



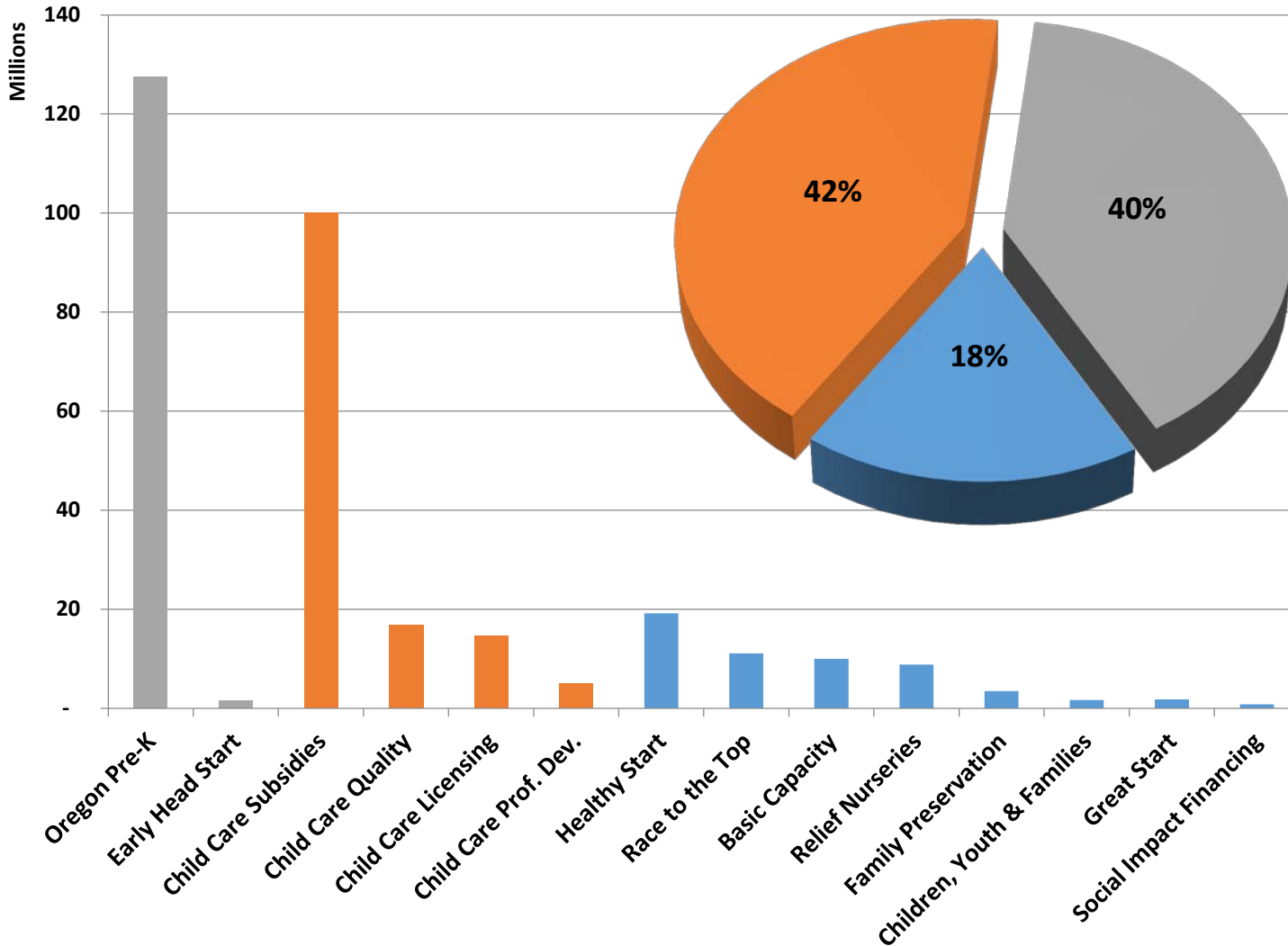
- A. Investors advance funds to a “Service Provider,” secured by a contract that specifies the repayment plus ROI. Investors assume full risks of lost investment due to non-performance of the provider.
- B. “Service Benefactors” (public & private institutions) enter into pay-for-performance contracts with the Service Provider. Compensation includes a premium based on a portion of the avoided costs or benefits accruing to improved childhood outcomes.
- C. The Service Provider repays Investors based on investment or contract terms. The Service Provider retains a portion of the pay-for-performance premium to build service capacity and performance.

# Social Innovation Financing Goals

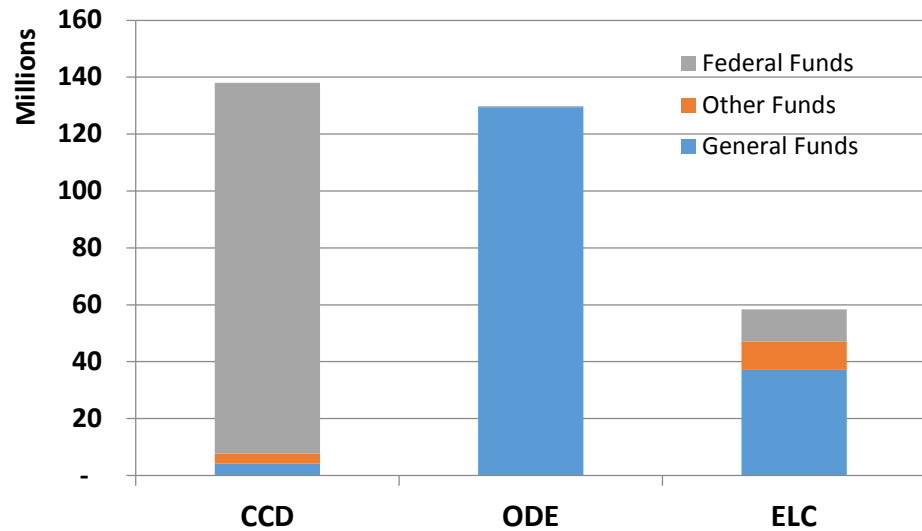
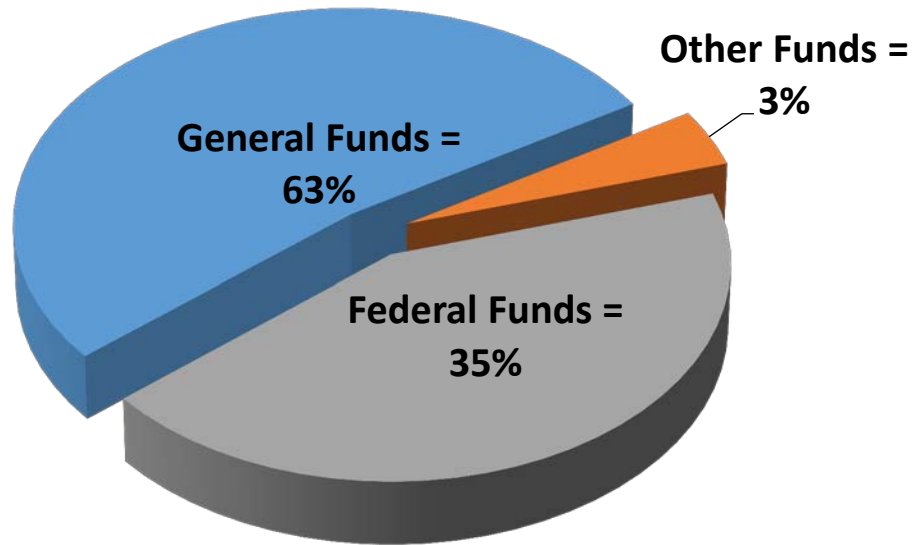
- 300-child, three-year “proof of concept”
- Coordinate services with ELC & DHS
- \$800,000 foundational investment to leverage ~\$4.5m
  - \$300k Economic Analysis
  - \$300k Performance Measurement, Accounting & Reporting
  - \$200k Capacity Building

# Financing Early Learning Division Programs

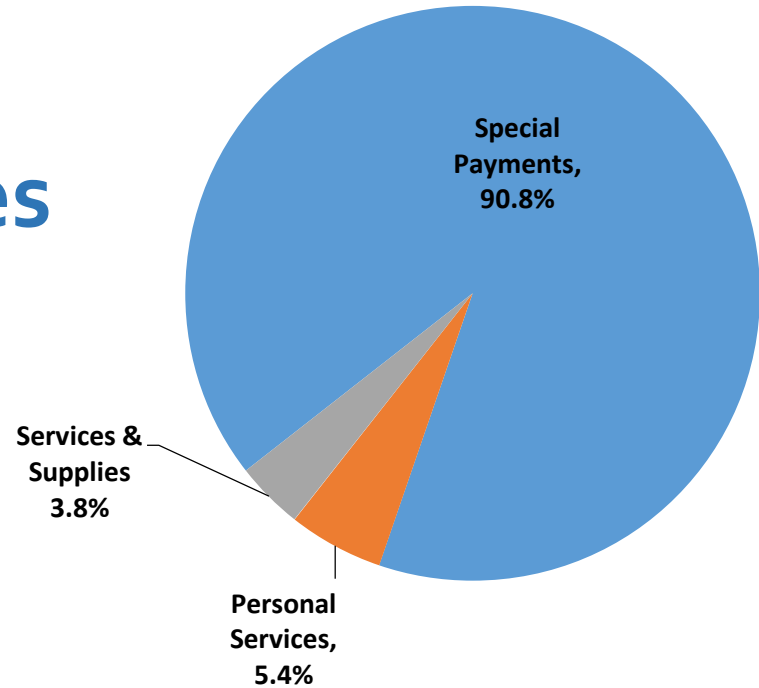
- Early Learning Council
- Child Care Division
- Department of Education



# Early Learning Division Funding Sources



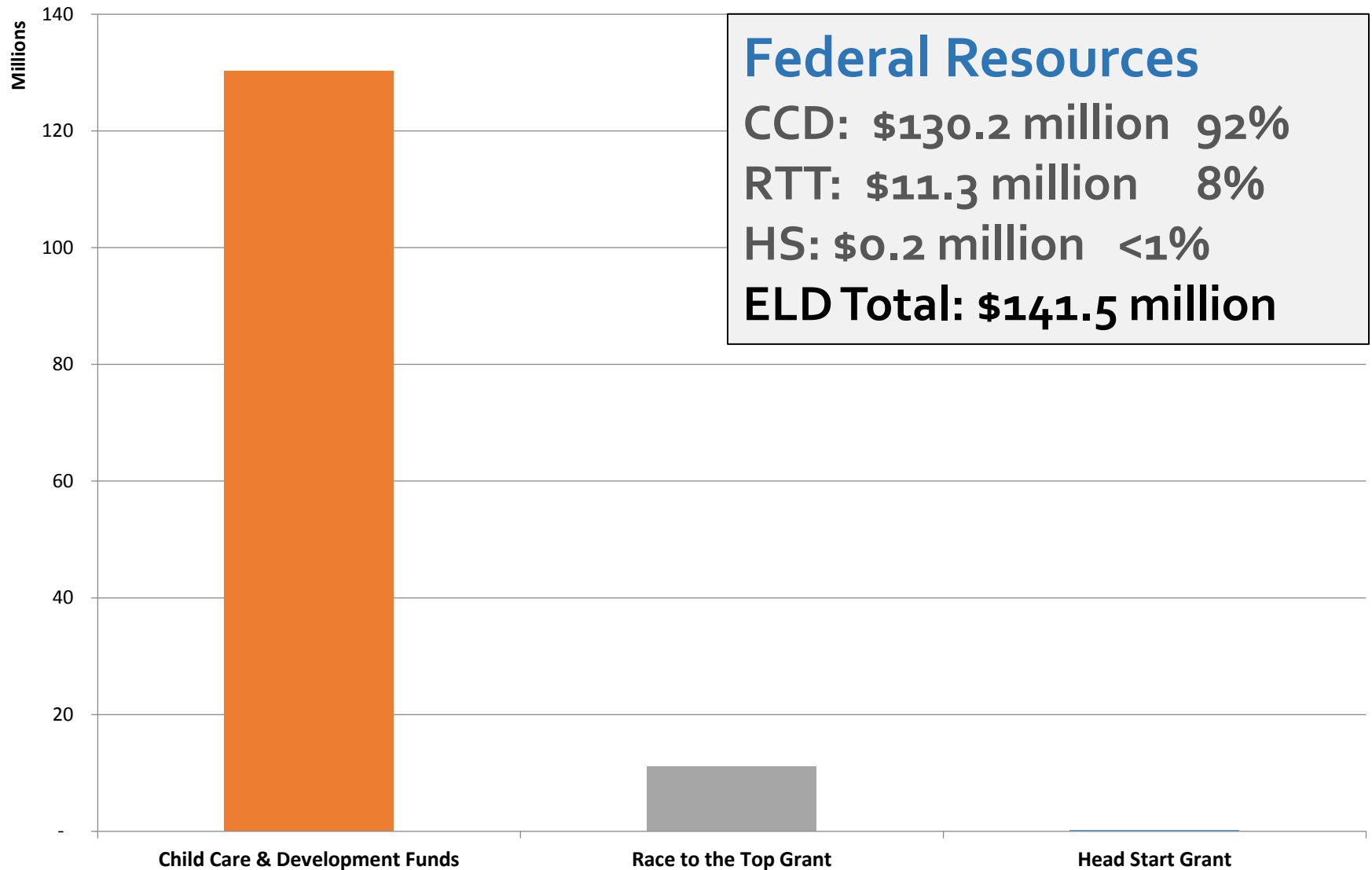
# Early Learning Division Expenditures



Early Learning Division	Special Payments	Personal Services	Services & Supplies	Total
ELC	\$ 48.1	\$ 3.3	\$ 7.0	\$ 58.4
CCD	\$ 119.2	\$ 13.4	\$ 5.4	\$ 138.0
ODE	\$ 129.0	\$ 0.7	\$ 0.1	\$ 129.8
<b>Total ELD</b>	<b>\$ 296.3</b>	<b>\$ 17.5</b>	<b>\$ 12.5</b>	<b>\$ 326.2</b>

*Totals may not foot due to rounding.*

# Federal Funds





# Governor's General Fund Investments

	From 2011-13 LAB	From 2013-15 CSL
Oregon Pre-Kindergarten/Early Head Start	\$ 4.6	\$ 2.2
Relief Nurseries	\$ 3.2	\$ 3.1
Early Intervention/Early Childhood Special Education	\$ 20.5	\$ 0.8
All other ELD Programs/Administration	\$ 2.2	\$ 1.7
<b>Subtotal Early Learning Division</b>	<b>\$ 30.5</b>	<b>\$ 7.9</b>
Employment Related Day Care	\$ 16.6	\$ 1.5

# Next Steps: Implement & Accelerate

- Create Division within ODE and launch Hubs.
- Implement Kindergarten Assessments, expand the Quality Rating and Improvement System, expand screening and referral, parental engagement, preparing children for kindergarten.
- Continue joint subcommittee.
- Further refine and implement measures, metrics, and agreed-upon outcomes for children.

# HB 2013A

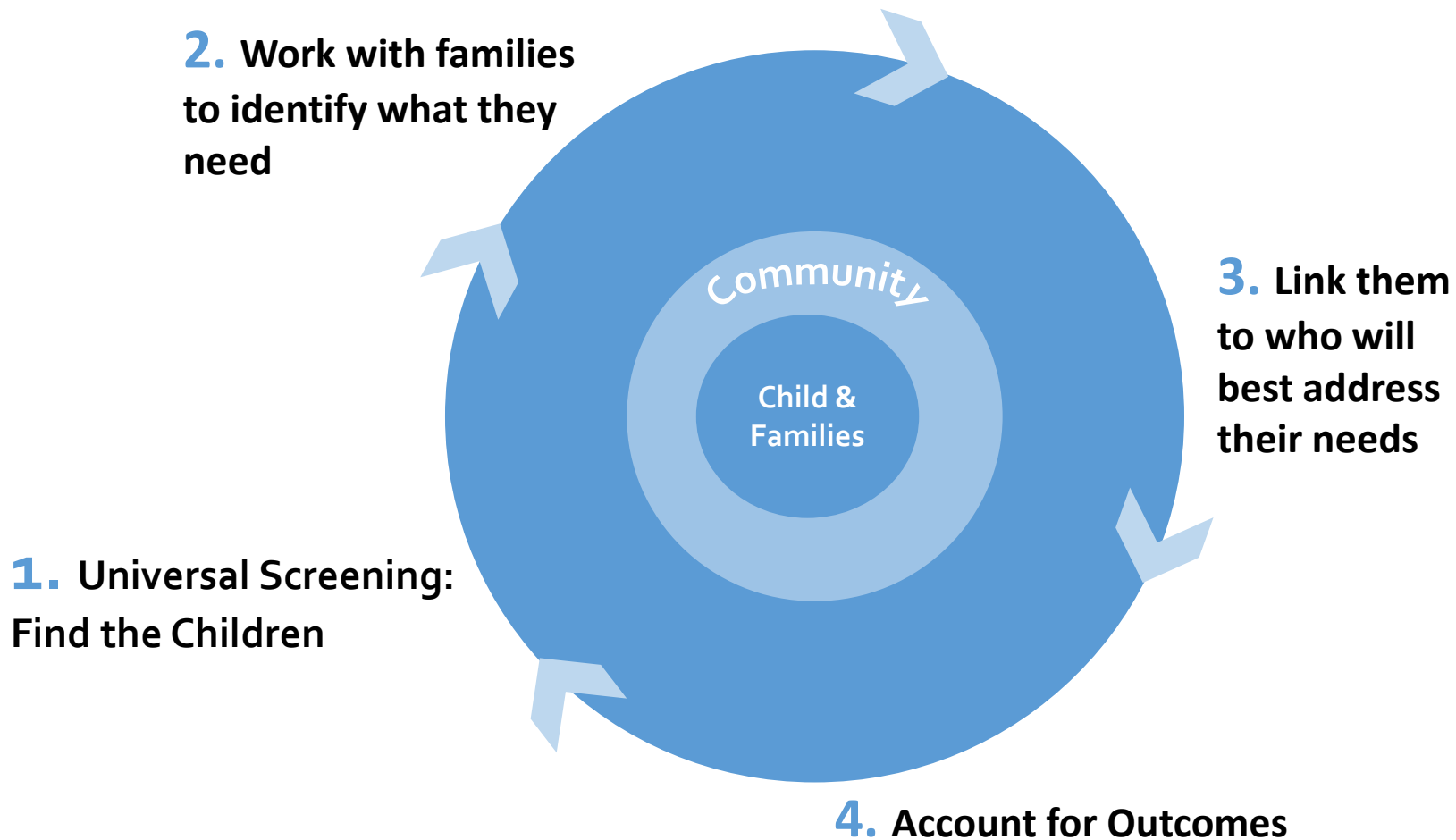
## Implementing Hubs:

- RFP for seven Hubs in 2013-14;
- RFP for up to another nine Hubs in 2014-15.

Ensuring service continuity in counties during transition from former commission contracts to state contracts, with intergovernmental agreements to bridge the gaps.

# HUBS

## (Community-Based Early Learning System)



# Supporting Parents and Families in Our Communities

## Former Commission on Children and Families Resources

Children, Youth & Families: \$1.7 GF, \$1.7 TF

Great Start: \$1.7 GF, \$1.7 TF

Family Preservation: \$0 GF, \$3.4 TF

Basic Capacity: \$10.0 GF, \$10.0 TF

(2013-15, in millions)

# OEIB Additional Investments in Early Learning

**Purpose:** Oregon Early Literacy initiative to improve kindergarten readiness and 3<sup>rd</sup> grade reading proficiency.

## **Goals:**

- Start early in children's lives and involve parents, child care providers and the community in ensuring all children have an early start at reading.
- Expand the amount of time, adult support, materials, cultural relevance and sense of joy that literacy brings.
- Provide the instruction necessary for every Oregon student to read in the primary grades.

Early Literacy Initiative: \$9.25 GF, \$9.25 TF

(2013-15 in millions)

# OEIB Additional Investments in Early Learning

Under the direction of the Early Learning Council, the Early Learning Division will administer \$1.8 million for early literacy grants. This will buy:

- Online and printed materials for 50,000 families (\$250,000)
- Grants providing access to school and public libraries statewide (\$800,000)
- Grants to reach 5,000 educators, parents and caregivers with engagement, instruction and professional development opportunities (\$750,000).

**This is why we're here:  
It's really  
all about  
our children...**



**...Becoming  
successful  
adults.**



# Oregon Department of Education Early Learning Division

**Jada Rupley, Early Learning System Director**  
jada.rupley@state.or.us

**Pamela Curtis, Early Learning Council Chair**

[www.oregon.gov/gov/Pages/oeib/OregonEducation  
InvestmentBoard.aspx#Early\\_Learning\\_Council](http://www.oregon.gov/gov/Pages/oeib/OregonEducationInvestmentBoard.aspx#Early_Learning_Council)