

Self-Sufficiency Programs

TANF JOBS (Job Opportunity and Basic Skills) House Committee on Higher Education and Workforce Development *April 24, 2013*

Liesl Wendt, Director, Office of Self-Sufficiency Programs, DHS

Carol Lamon, Deputy Director, Office of Self-Sufficiency Programs, DHS

Xochitl Esparza, TANF Program Manager, DHS



Presentation Outline







- Program overview
- Who we serve
- JOBS service delivery overview
- Community partnerships
- Community Partners

Oregon's TANF JOBS Program

- A family preservation and children's program
- An economic stability and employment program

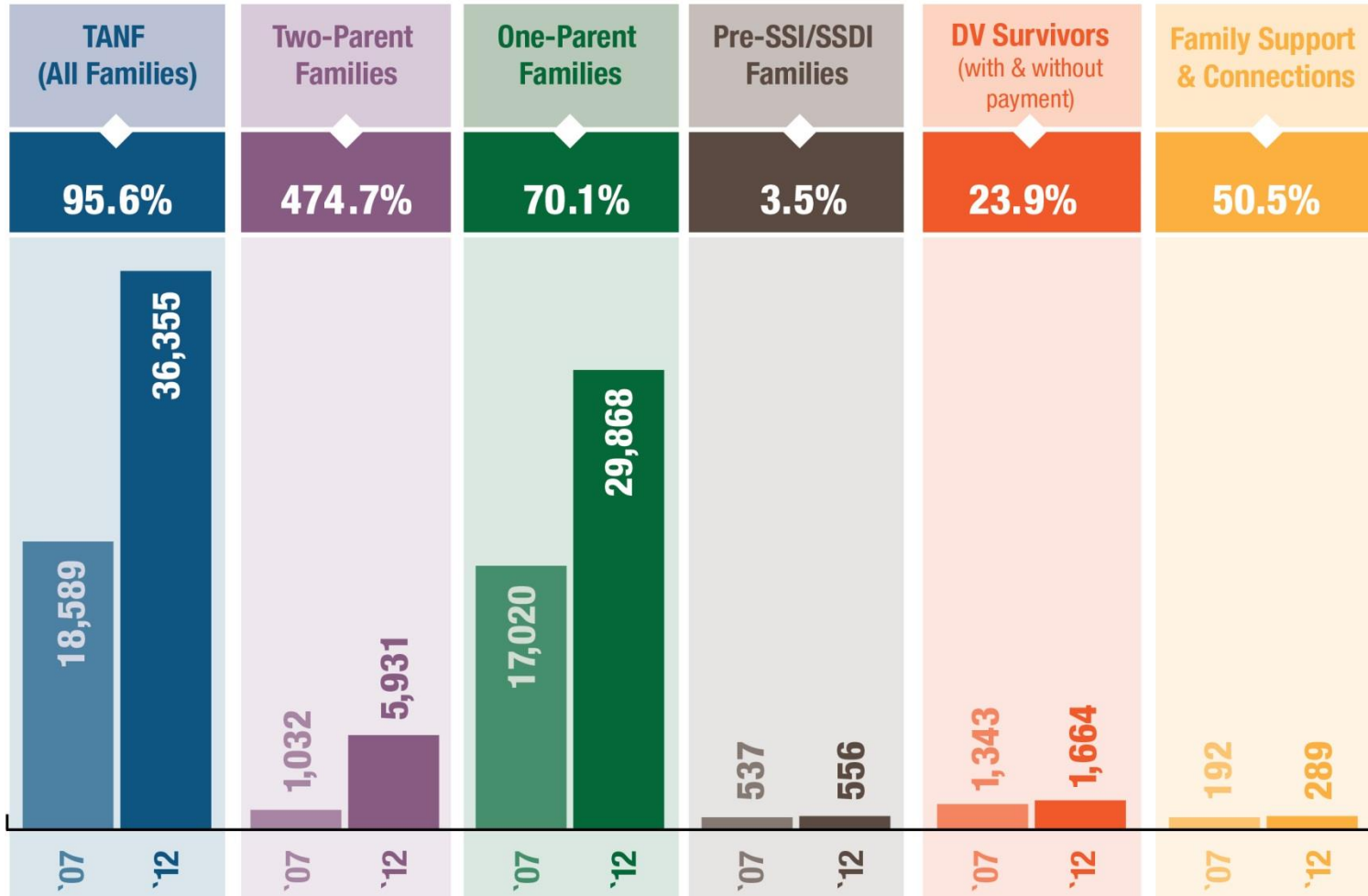
Client Profile



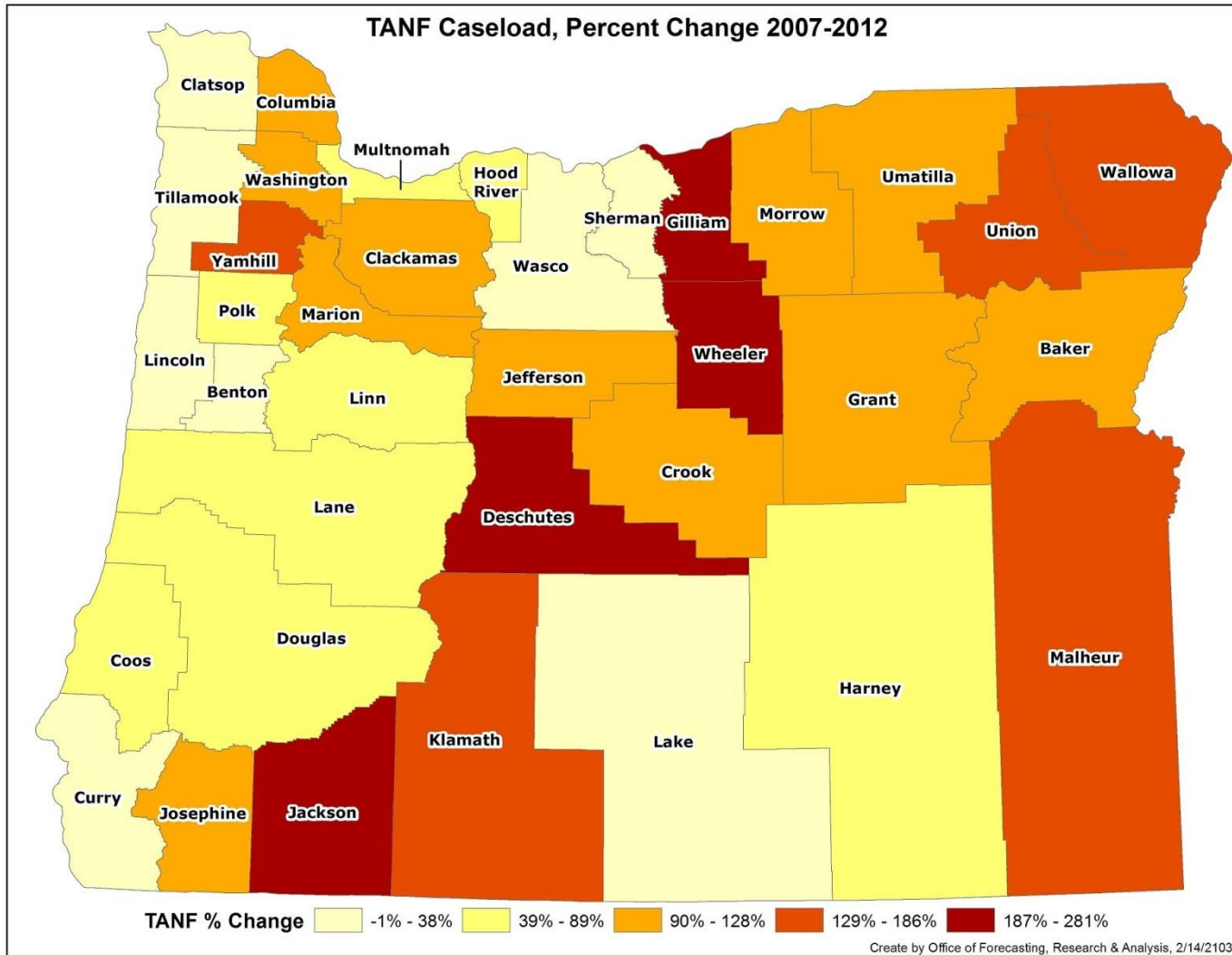
	Single mother, two children
	No job; Income less than \$616 per month
	Receives \$506 per month in TANF cash assistance
	May live with family or share low-income apartment with others
	Limited transportation options
	Family stability challenges such as homelessness or domestic violence

Oregon's TANF Program

TANF-Related Caseload Trends



TANF Caseload 2007 to 2012

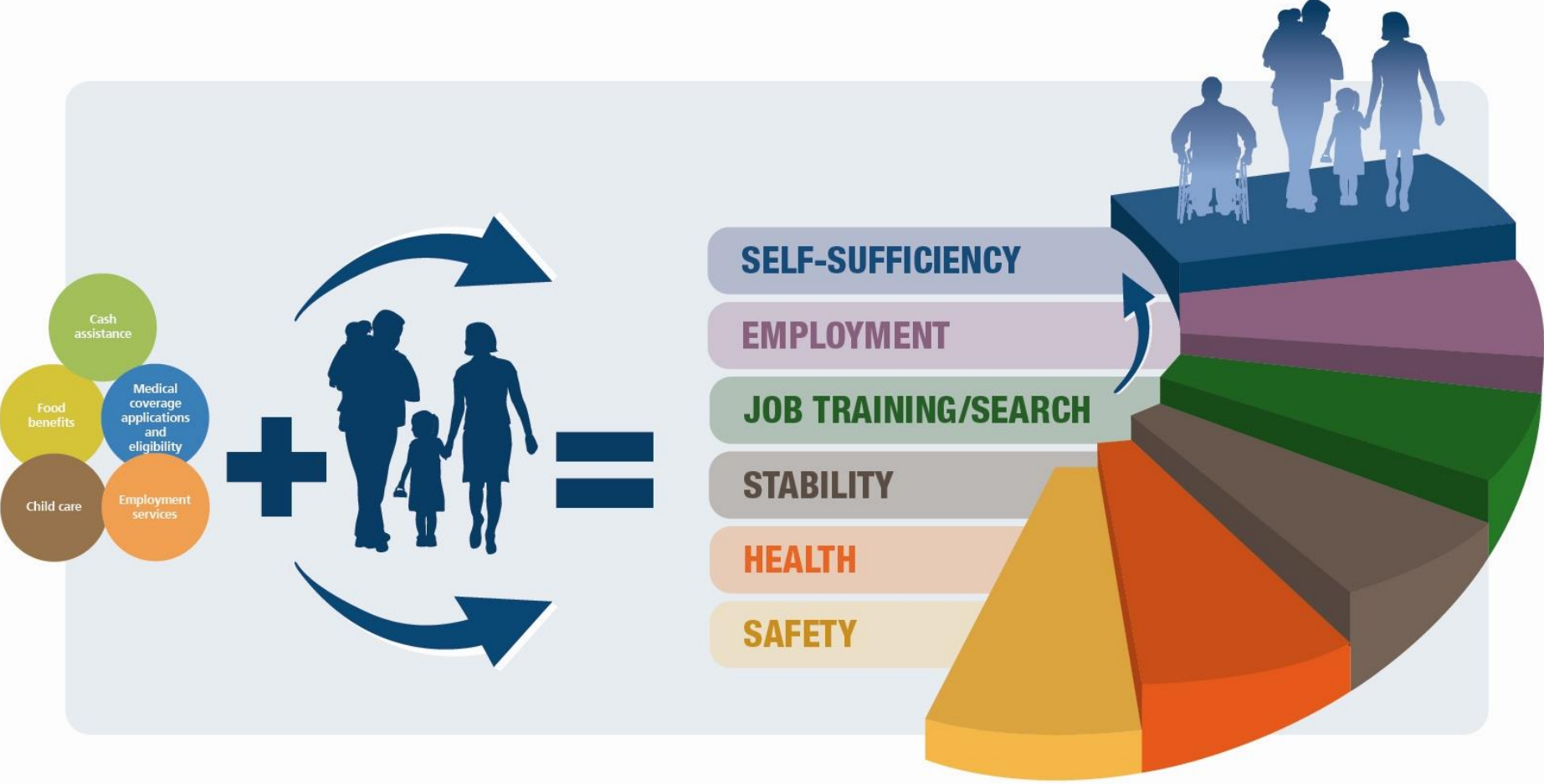


Self-Sufficiency Programs

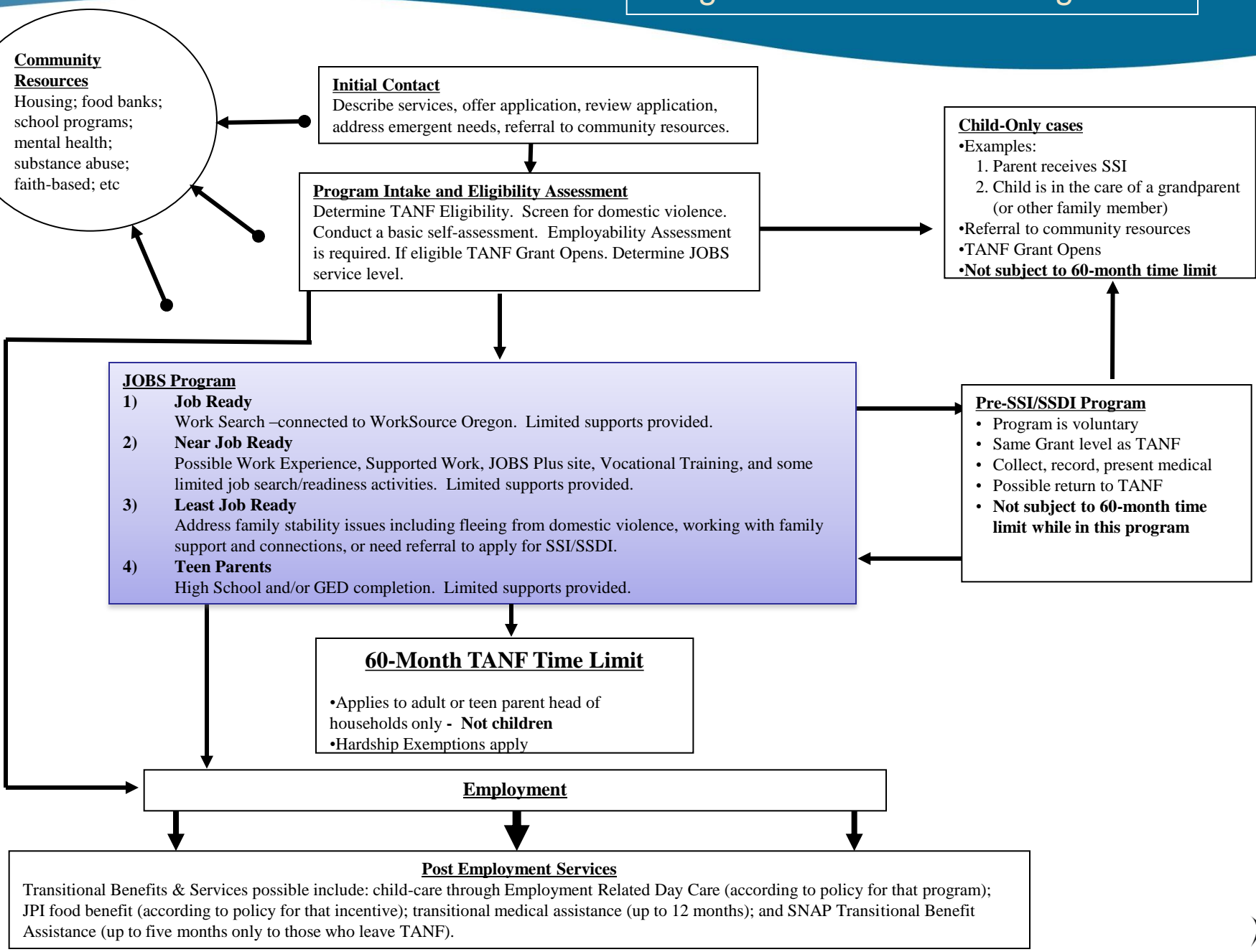
Service Delivery Overview



Client Participation and Transition



Oregon Current TANF Design 2012



JOBS Program – Reduction Impacts

JOBS Service Array 2009–2011

- Job Search
- Work Experience/Supported Work
- Subsidized employment (JOBS Plus)
- High School Diploma or GED (adults and teen parents)
- Adult Basic Education
- English as a Second Language
- Life Skills
- JOBS Skills Training
- Community Services Program
- Vocational Training
- On-the-Job Training
- Employment Retention
- Parents as Scholars
- Program Entry/Holistic Orientation
- Child Related activities
- Domestic Violence
- Drug and Alcohol
- Mental Health
- Learning Disability Assessments
- Short-Term Medical Issues
- Rehabilitative Services

Support Service Payments according to need:

- Child Care
- Transportation
- Housing
- Other

JOBS Service Array 2011–2013

- Job Search
- Work Experience/Supported Work
- Subsidized employment (JOBS Plus)
- High School Diploma or GED (teen parents)

- Job Participation Incentive (JPI)

Support Service Payments:

- Child Care (family cap/mo; lifted March 2012)
- Transportation
- Other
- Limited payments based on type of activity

JOBS Service Array 2013–2015

- Job Search
- Work Experience/Supported Work
- Subsidized employment (JOBS Plus)
- High School Diploma or GED (teen parents)

- Job Participation Incentive (JPI)

Support Service Payments:

- Child Care
- Transportation
- Other
- Limited payments based on type of activity

TANF and JOBS Program Challenges

- Increased caseloads
- Reduced capacity and resources within JOBS program
- Limited DHS case management staff
- Slow economic recovery



Self-Sufficiency Programs

Community Partnerships



Oregon at Work – A Strategic Plan

*Vision: Quality Jobs – Skilled Workers -
Strong State Economy - Local Prosperity*

Goal: Oregonians have the skills they need to fill current and new high-wage, high-demand jobs.

Goal: Employers have the skilled workers they need to remain competitive and contribute to local prosperity

Goal: Aligned, integrated, efficient, effective, workforce system achieving strong outcomes for businesses and job seekers.

Three Strategies for Change

Sector Strategies - Work Ready Communities -
System Innovation

Community Partnerships and Leveraging Resources

Workforce System

- ✓ Working closely with Workforce partners to align TANF/JOBS program with the OWIB plan.
- ✓ Working closely with Workforce Investment Act (WIA) providers, including increasing referrals to WIA services for work-ready TANF adults and planning to better connect DHS and Workforce data systems within future Modernization design.
- ✓ Aligning training and work preparation services - such as vocational training, preparation for NCRC testing, JOBS Plus (subsidized employment) and work experience – with local sector strategies.

TANF Redesign Workgroups and Pilots

- ✓ Worked with stakeholders such as TANF Alliance and Family Services Review Commission on strategies for improving services.
- ✓ Acting on recommendations from workgroups by piloting local strategies and involving partners to increase employment and family stability for families served by TANF and JOBS.

Community Partners

- Portland Community College
- Shangri-La
- DHS District 3 Office