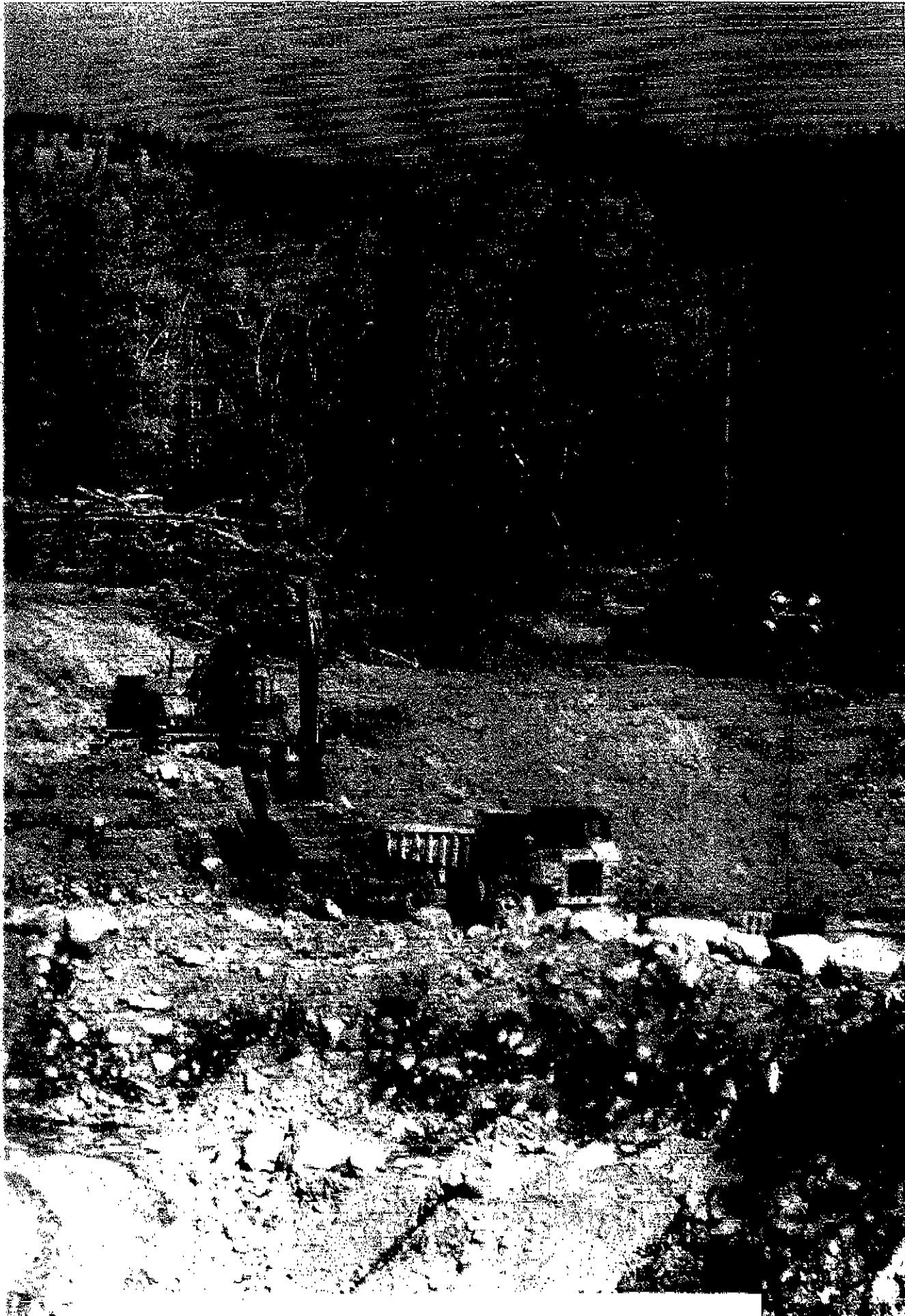


Please protect and encourage responsible placer mining in Oregon. A myriad of laws already exist that restrain miners, and hold them accountable if their activities even slightly deviate from very strict existing mandates. Today's miners are overwhelmingly people who are conscientious and responsible land users who respect our natural resources much more than their critics seem to imagine.

Thomas Bonn
Placer Mining Engineer

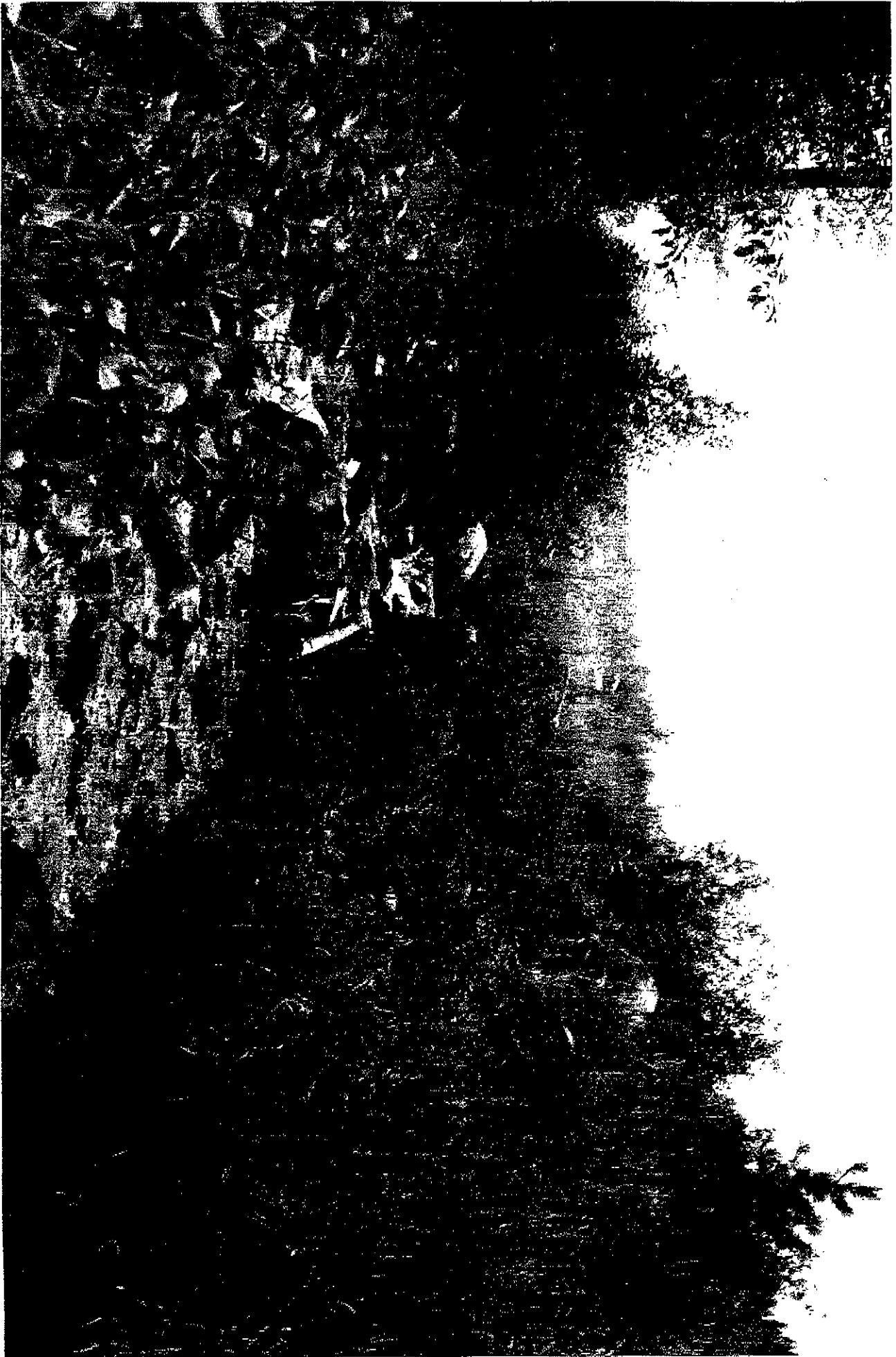
784 Rainbow St
Roseburg, OR 97471
(541) 740-5927



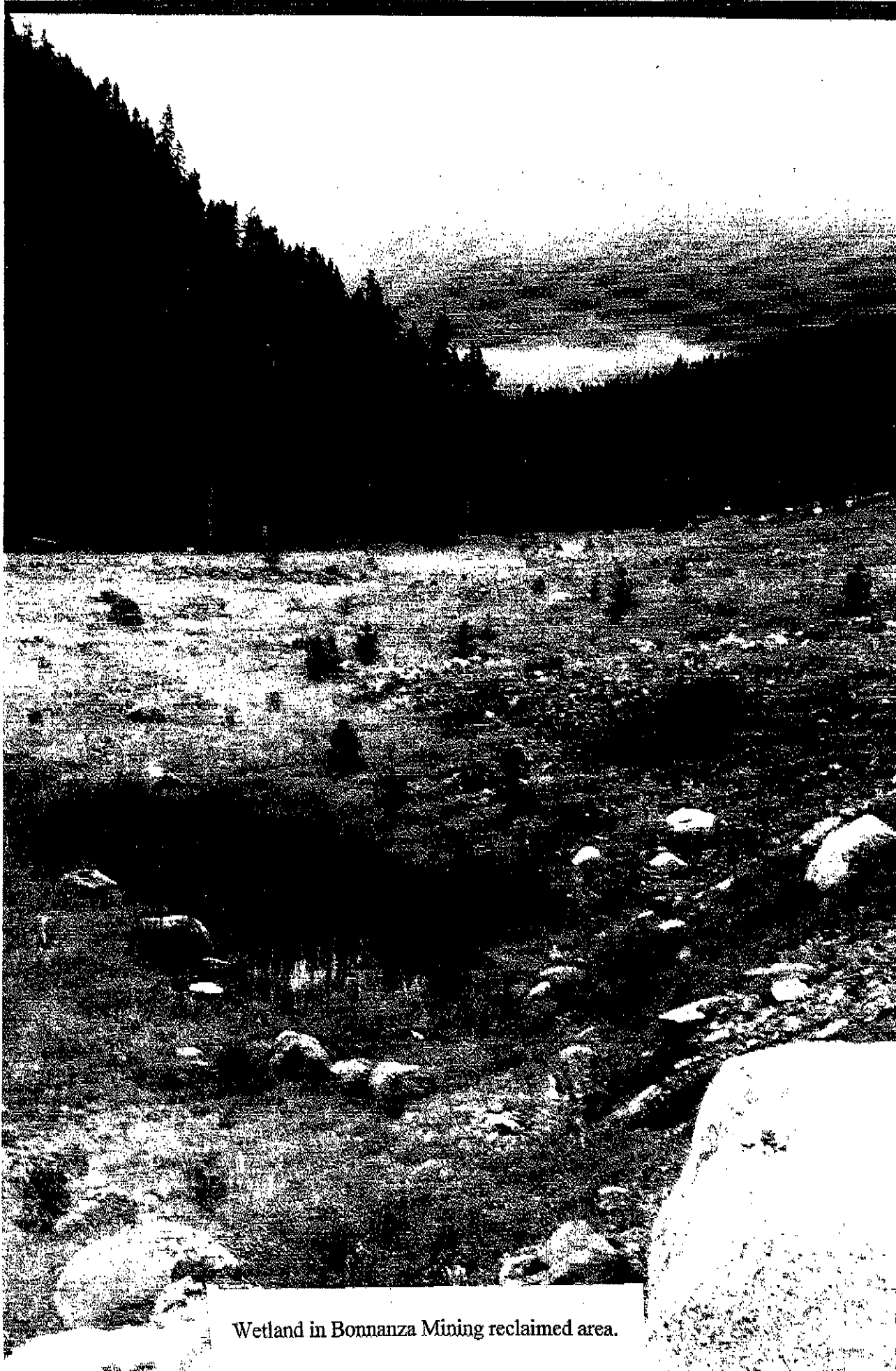
Bonanza Mining Company open pit placer mine on Pine Creek, 1988.



Diversion of Deep Creek, one mile below Cornucopia. The diversion was constructed by Bonanza Mining in 1991. Photo about 500 feet upstream from confluence with Pine Creek



Deep Creek diversion about 200 feet from the confluence with Pine Creek.



Wetland in Bonnanza Mining reclaimed area.



Pine Creek diversion, constructed by Bonanza Mining in 1992.