

Impacts of SB 401

on

Oregon Senate District 2



Description of SB 401

“Designates certain rivers and creeks as scenic waterways.
Declares emergency, effective on passage.”

Oregon Parks and Recreation
Department: Rules and Regulations
Scenic Waterways Program

- Oregon Parks and Recreation Department must be notified of certain activities proposed within a 1/4 mile of the bank of designated scenic waterways.
- Activities include cutting of trees, mining, construction of roads, railroads, utilities, buildings, or other structures.
- Activities may not be started until the written notification is approved, or until one year after the notice is accepted.

[-http://www.oregon.gov/oprd/RULES/pages/waterways.aspx](http://www.oregon.gov/oprd/RULES/pages/waterways.aspx)



Description of SB 401

Senate Bill 401 (SB 401) adds nearly 30 rivers and creeks to the Scenic Waterways program.

This bill has a significant impact on Southern Oregon. Of the additions nearly 70% of them are in Southern and South West Oregon.

There can be serious adverse effects on Southern Oregon employers and private land owners.



Description and Impact of SB 401

Why focus on Oregon Senate District 2?

15 Rivers or Creeks in Josephine County are named in SB 401.

Over 50% of the Rivers and Creeks designated in SB 401 are in Josephine County.



Impacts of SB 401

on Josephine County

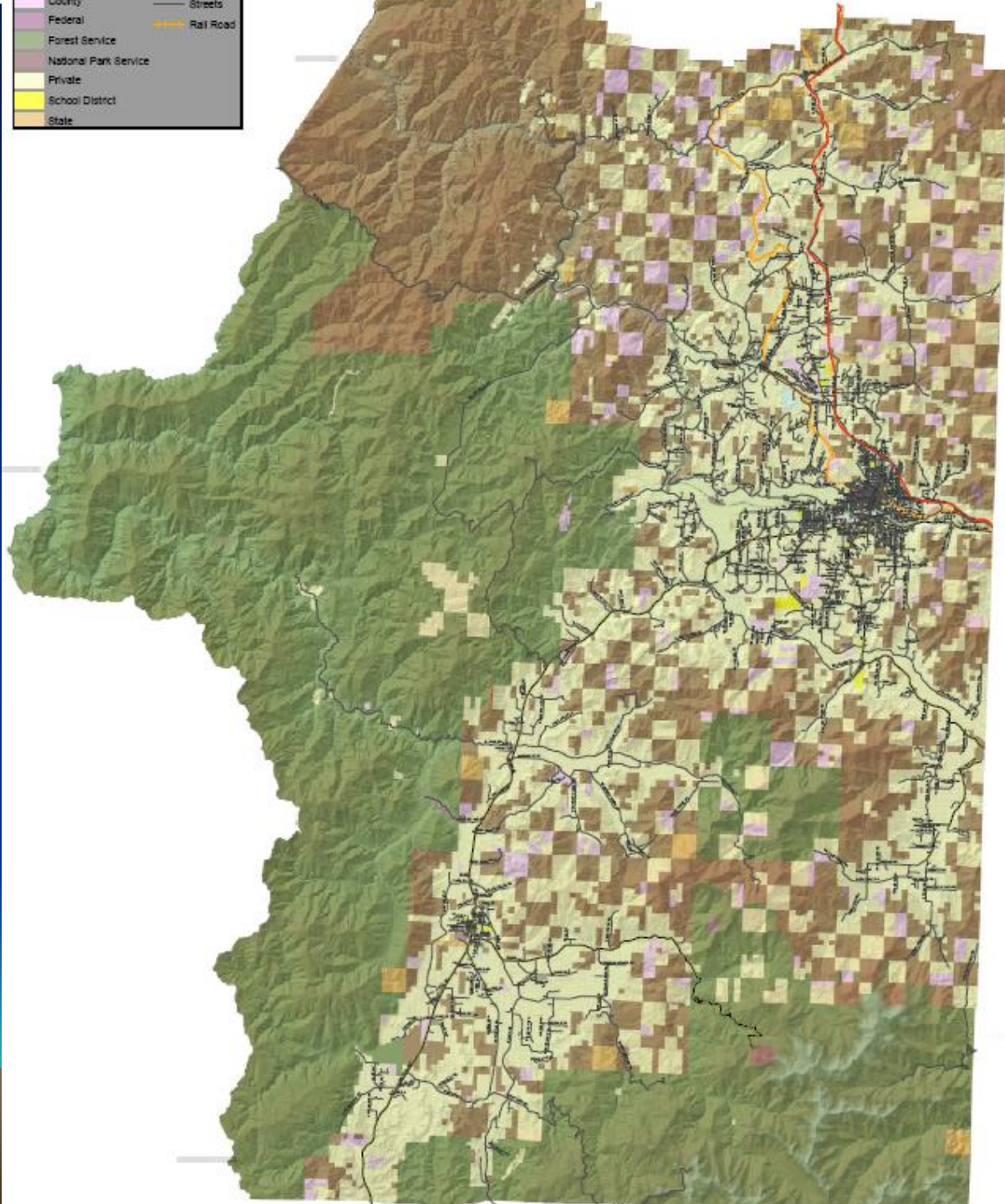
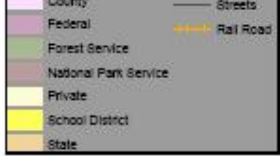
Land Ownership of Josephine County

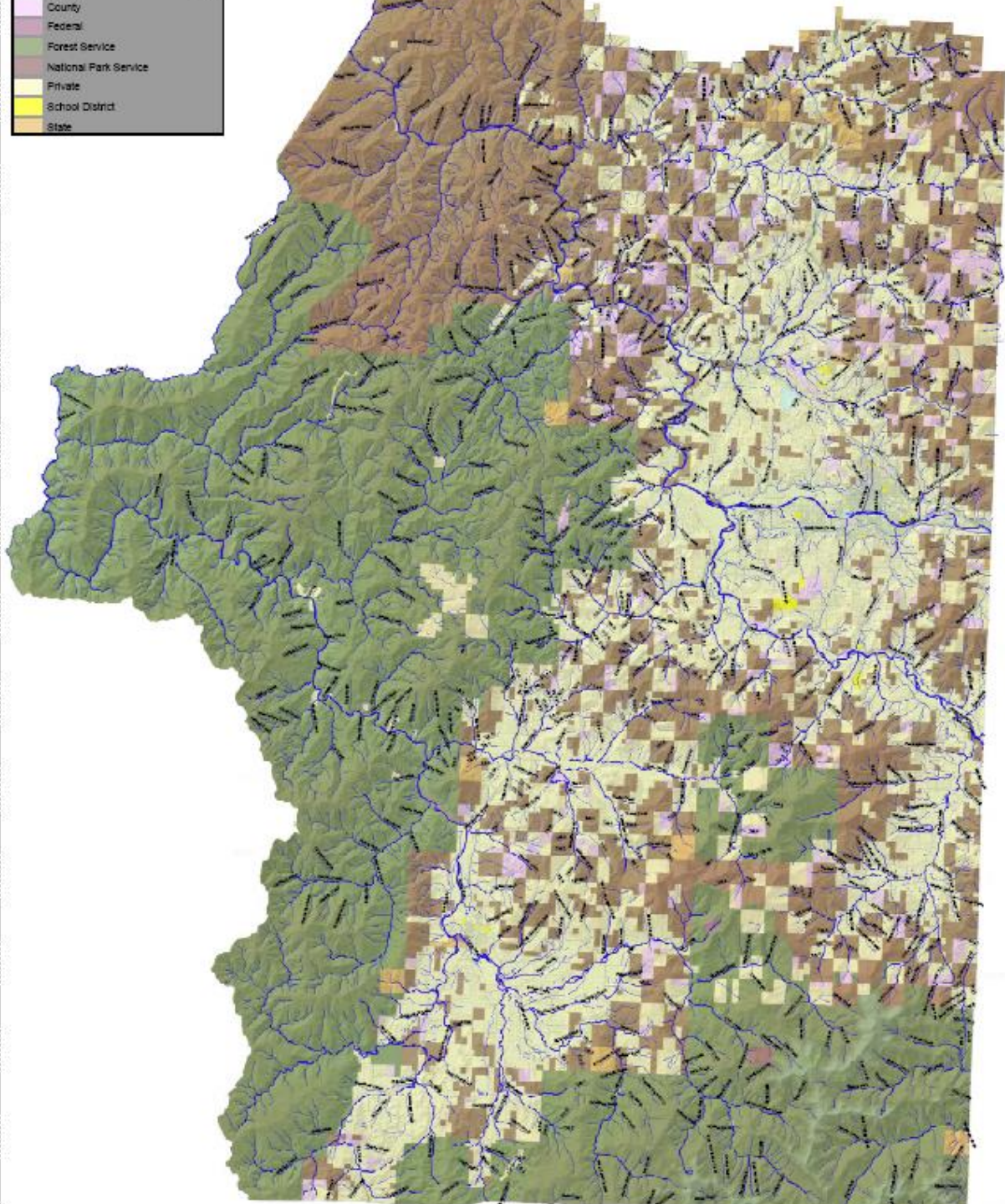
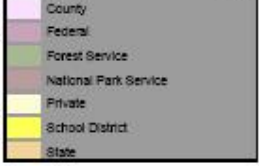
- 72% Publically Owned Property
- 28% Privately Owned Property

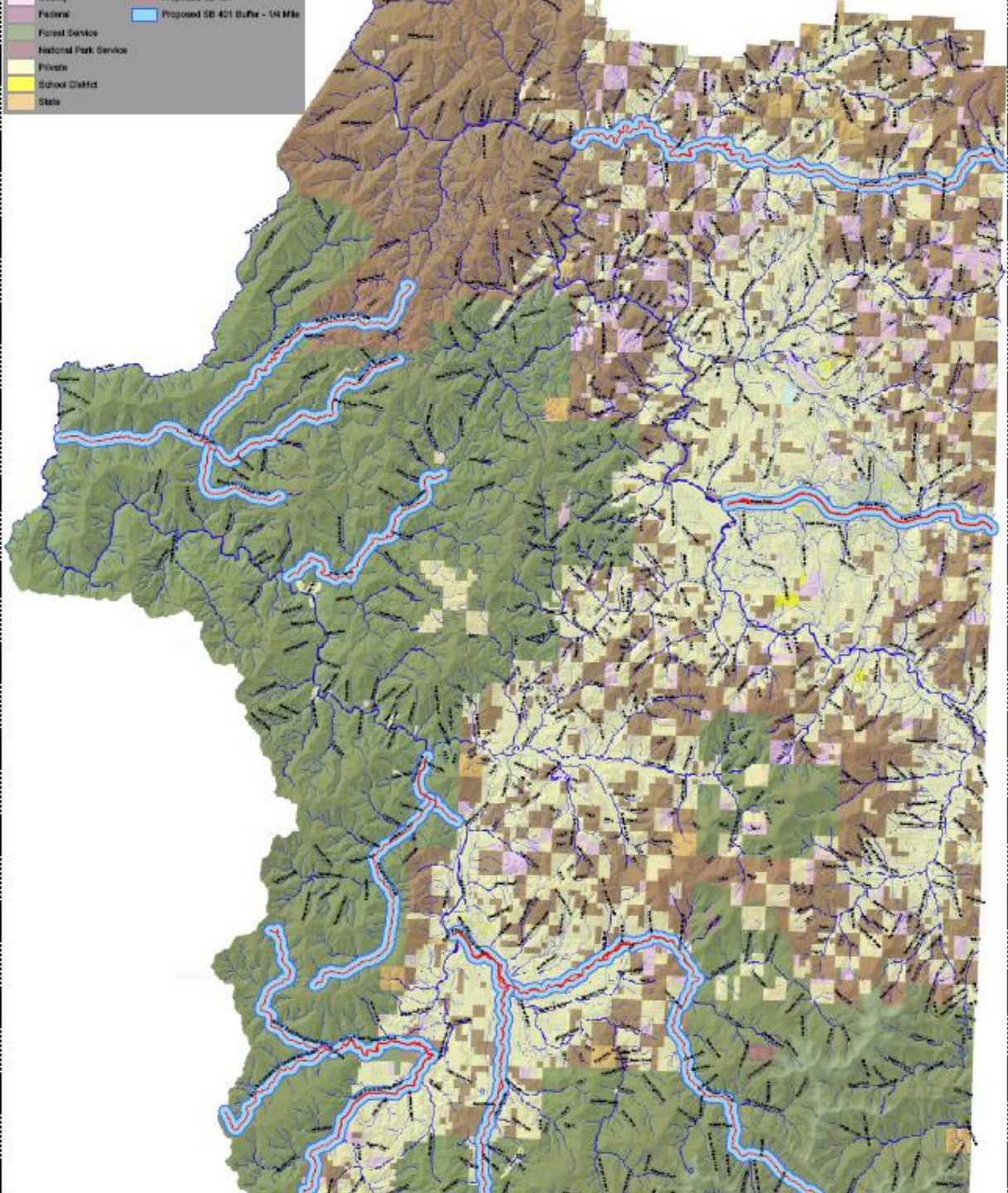
-1,035,327 Acres

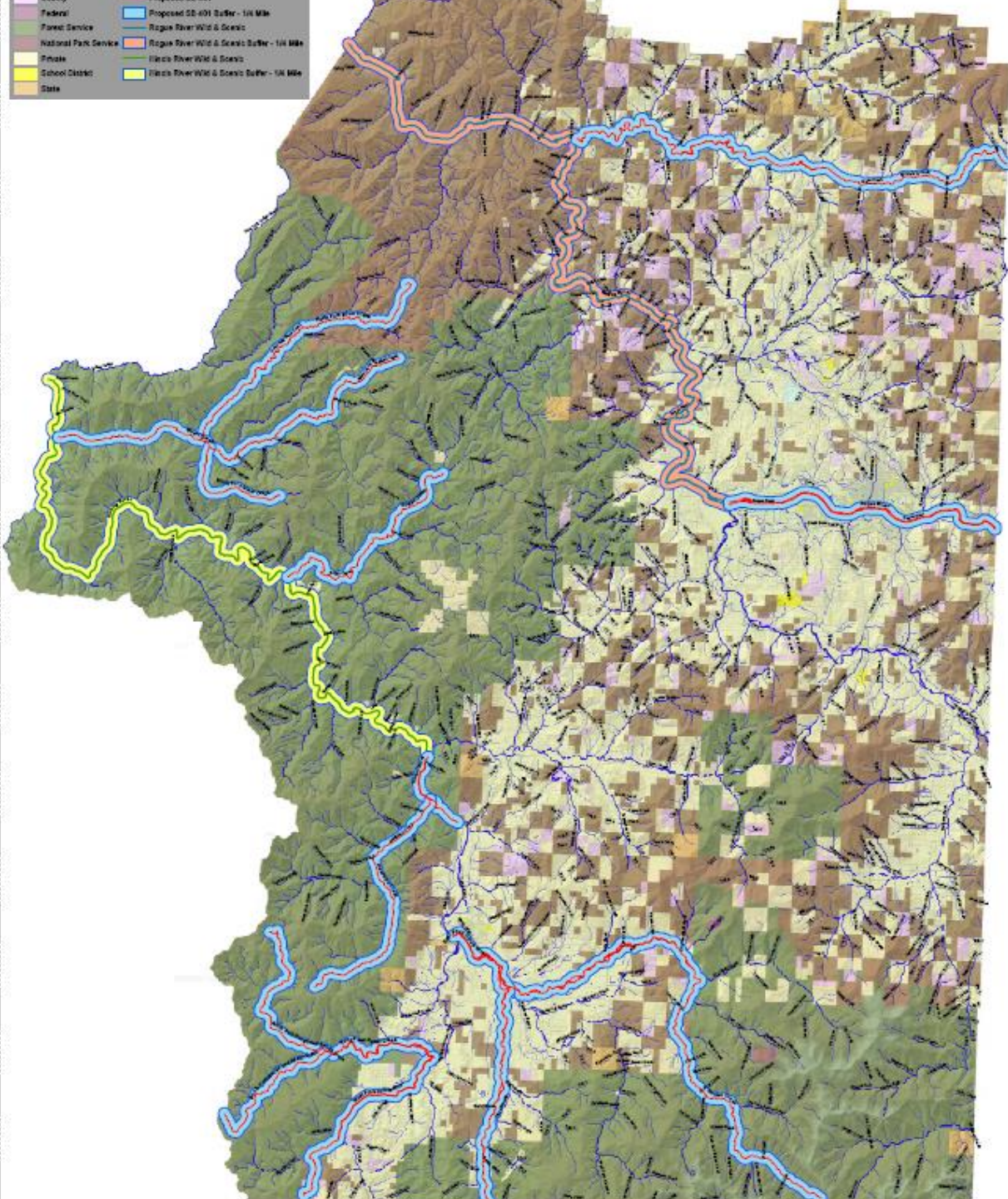
- 746,296 acres (72%) Public
- 289,030 acres (28%) Private











Impacts of SB 401

on Josephine County

Rogue River	Approx.	12.50	Miles
Grave Creek	Approx.	23.00	Miles
North Fork Silver Creek	Approx.	12.50	Miles
Silver Creek	Approx.	17.50	Miles
South Fork Silver Creek	Approx.	5.50	Miles
Briggs Creek	Approx.	11.00	Miles
Josephine Creek	Approx.	11.50	Miles
Illinois River	Approx.	4.00	Miles
East Fork Illinois	Approx.	14.50	Miles
Sucker Creek	Approx.	24.00	Miles
South Fork Rough & Ready Creek	Approx.	7.00	Miles
Rough & Ready Creek	Approx.	6.00	Miles
North Fork Rough & Ready Creek	Approx.	8.00	Miles
West Fork Illinois River	Approx.	9.50	Miles

Approx. Total

166.5

Miles



Impacts of SB 401

on Josephine County

166 ½ Linear Miles of Rivers &
Creeks.

83+ sq. miles of land placed
within the “**Scenic Easement**”

83 ¼ sq. miles
= 53,280 acres

83 ¼ sq. miles = City of Seattle



Impacts of SB 401

on Private Property in Josephine County

Linear Miles of River	166.5	Miles
Number of Properties Affected	5,032	Tax lots
Number of Private Properties Affected	4,759	Tax lots
Number of Private Acres affected	23,942	Acres
Real Market Value of Property Affected	\$1,235,166,151	



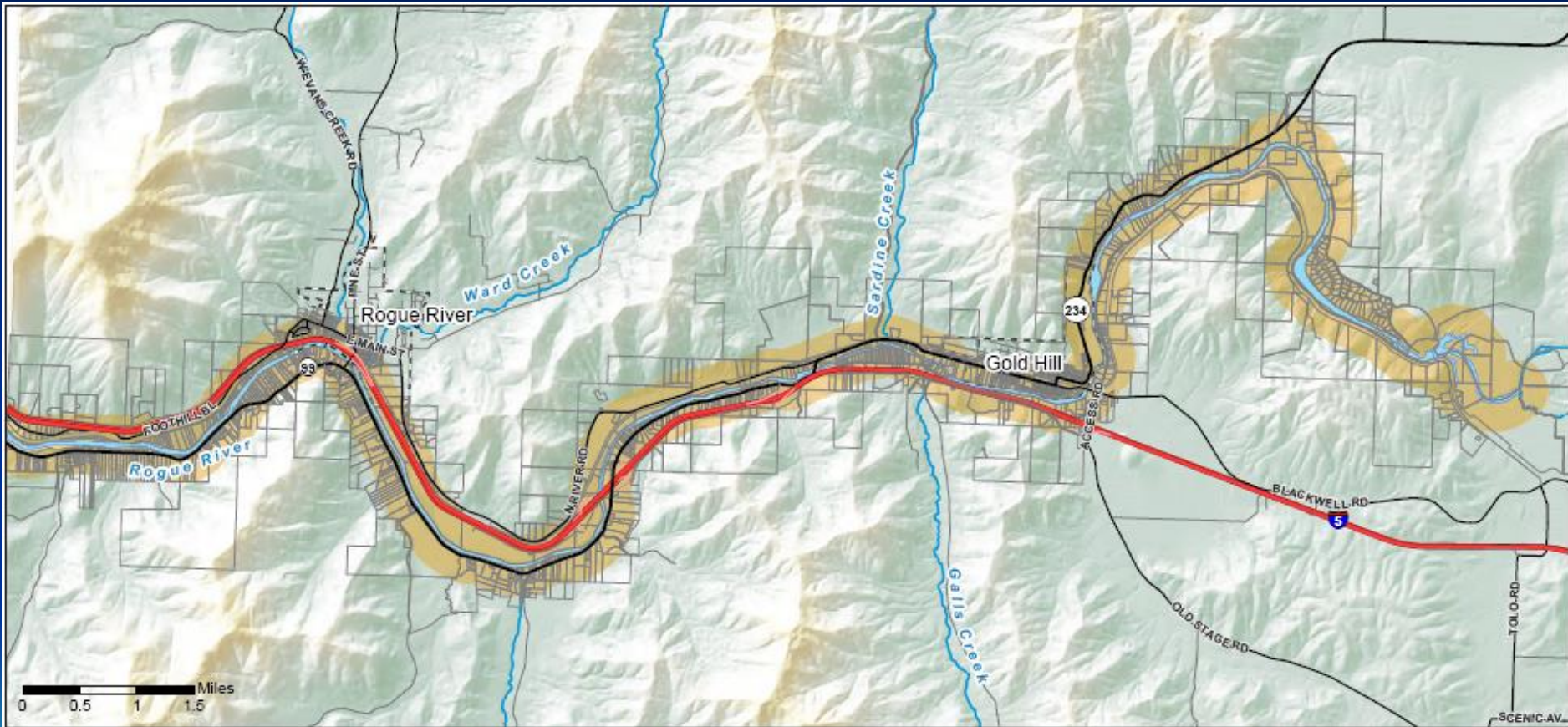
Impacts of SB 401

on Private Property in **Jackson County**

Linear Miles of River	~24	Miles
Number of Properties Affected	2,208	Tax lots
Number of Private Properties Affected	2,095	Tax lots
Number of Private Acres affected	41,428	Acres
Real Market Value of Property Affected	\$467,189,420	

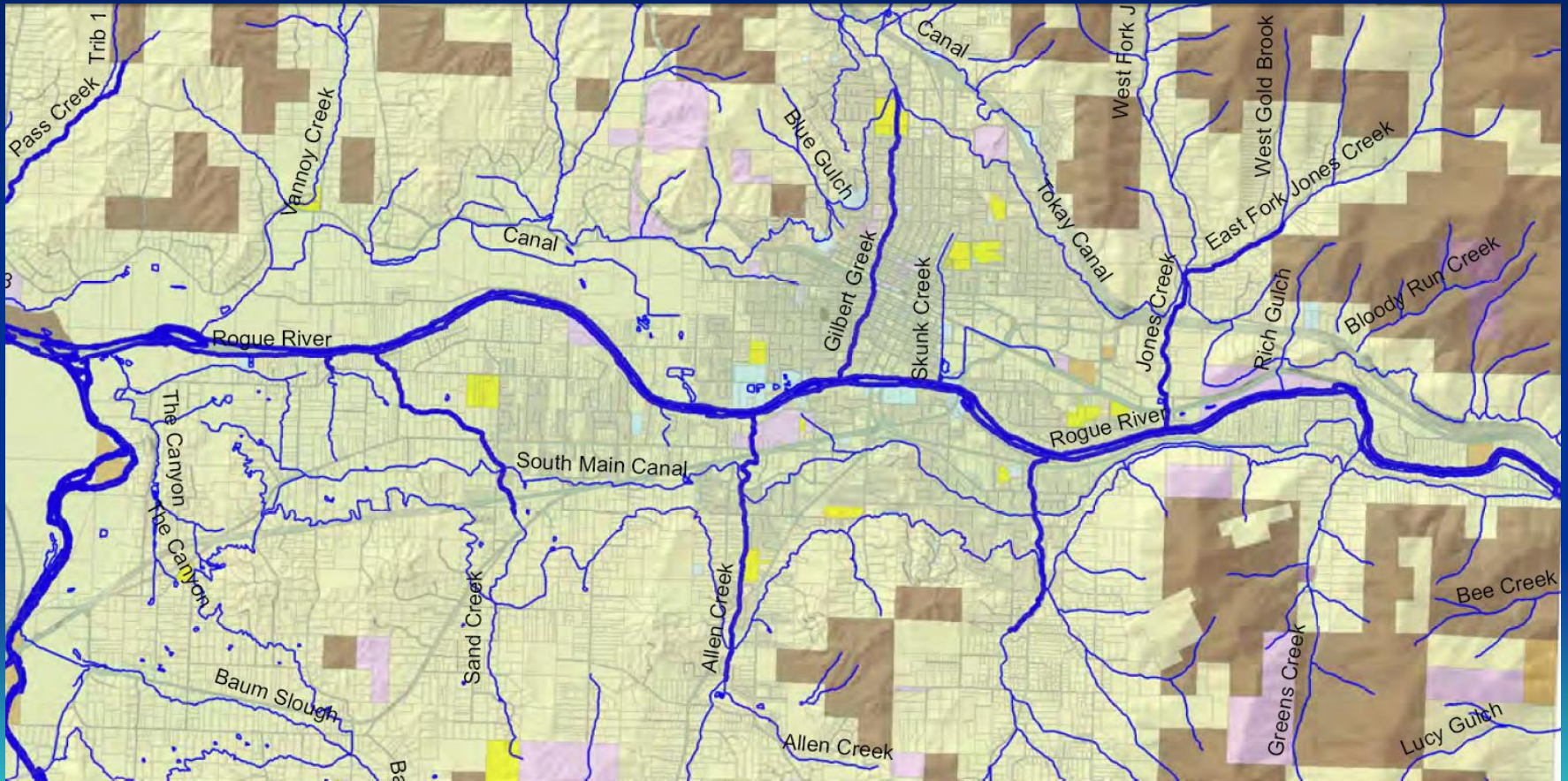


Impacts of SB 401 on Private Property in Jackson County



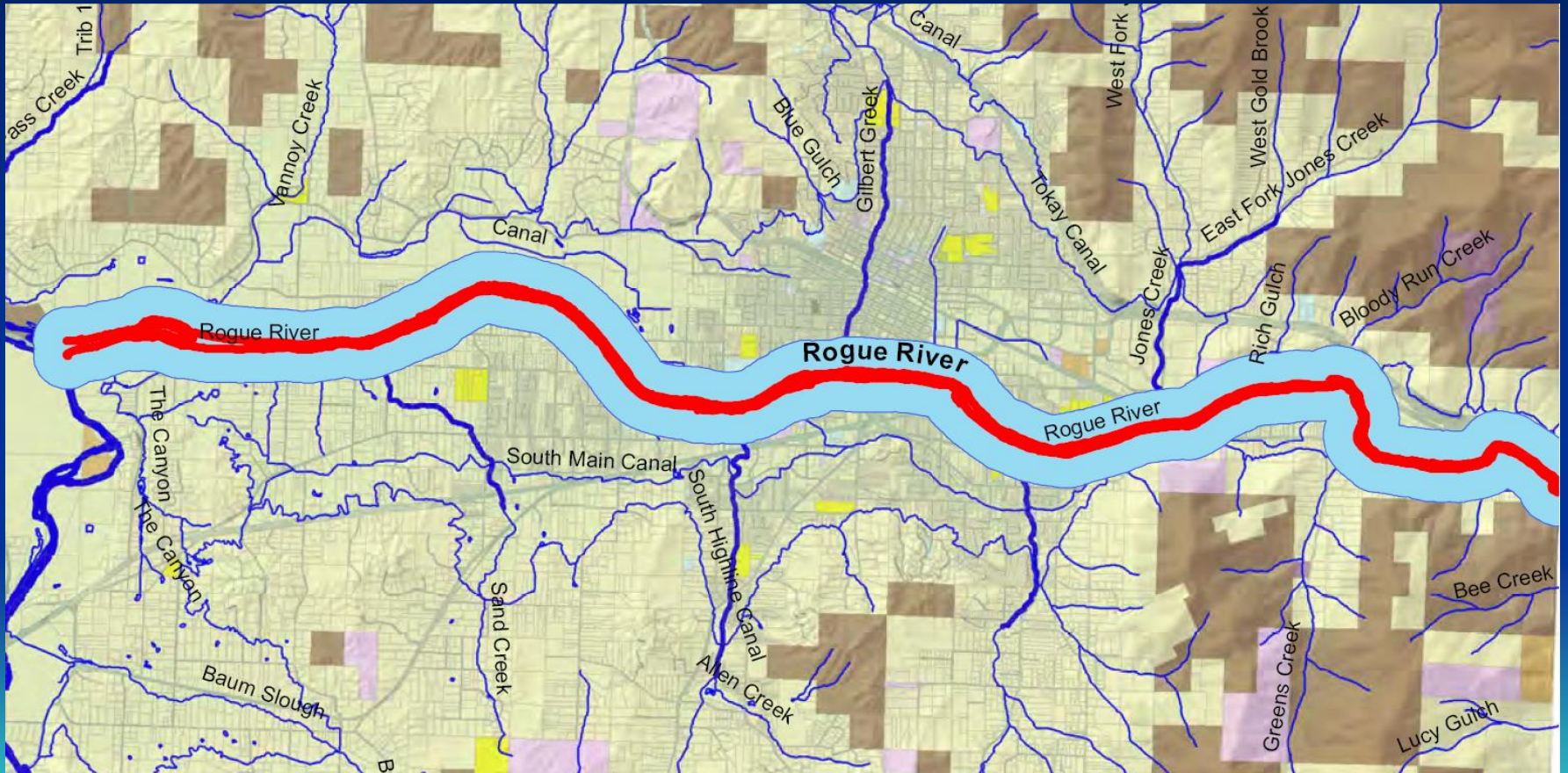
Impacts of SB 401

on Private Property in
The City of Grants Pass



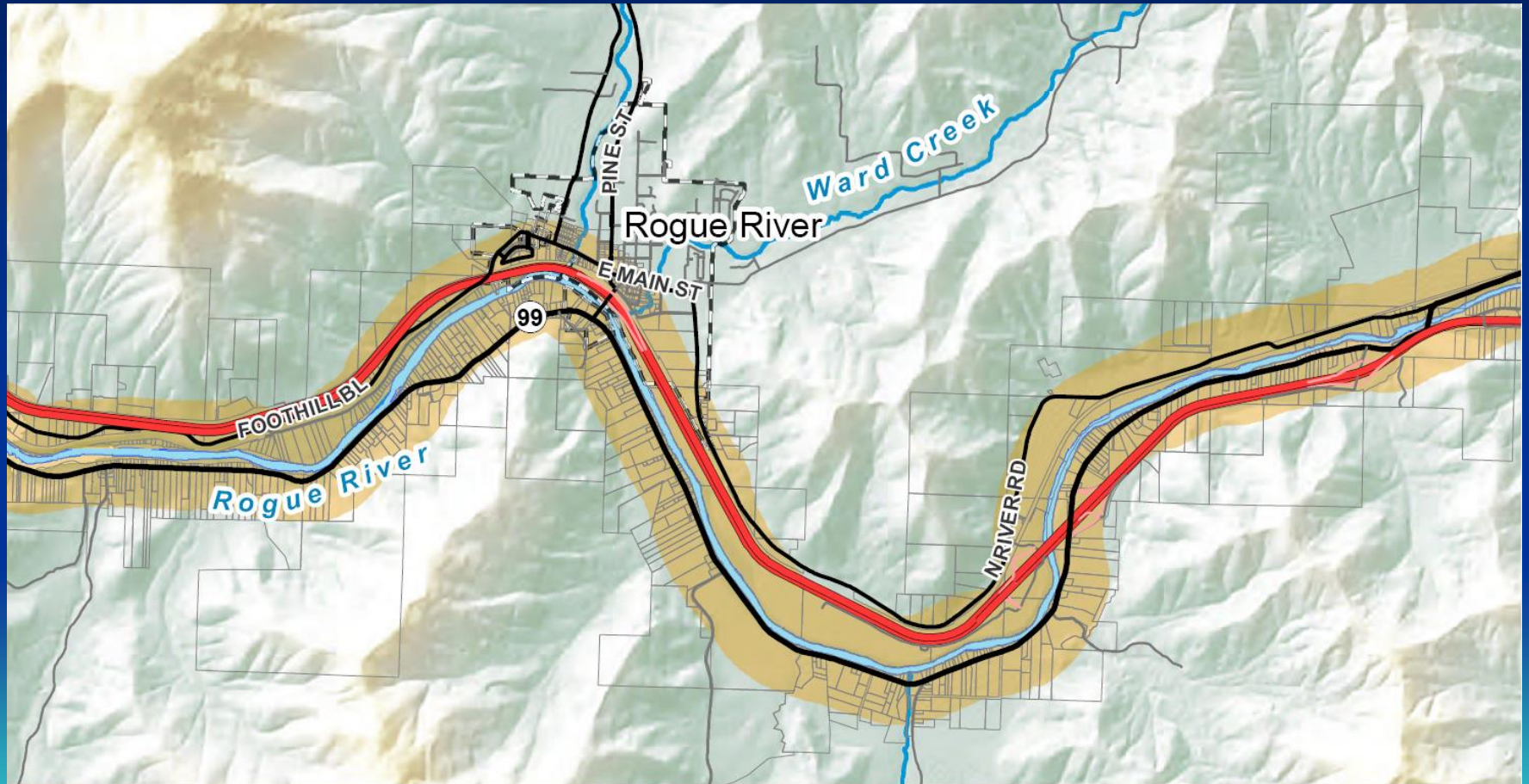
Impacts of SB 401

on Private Property in
The City of Grants Pass



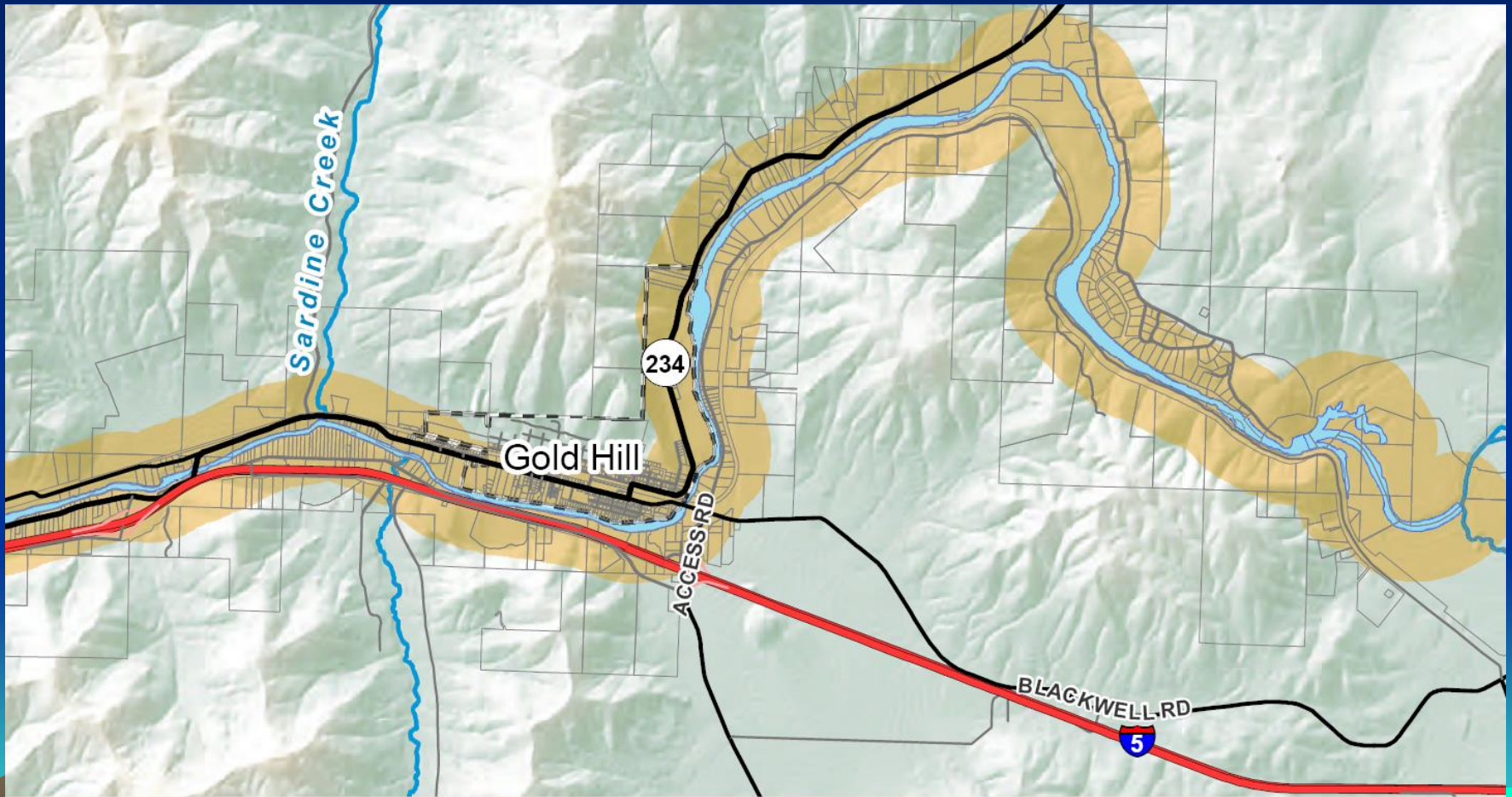
Impacts of SB 401

on Private Property in
The City of Rogue River



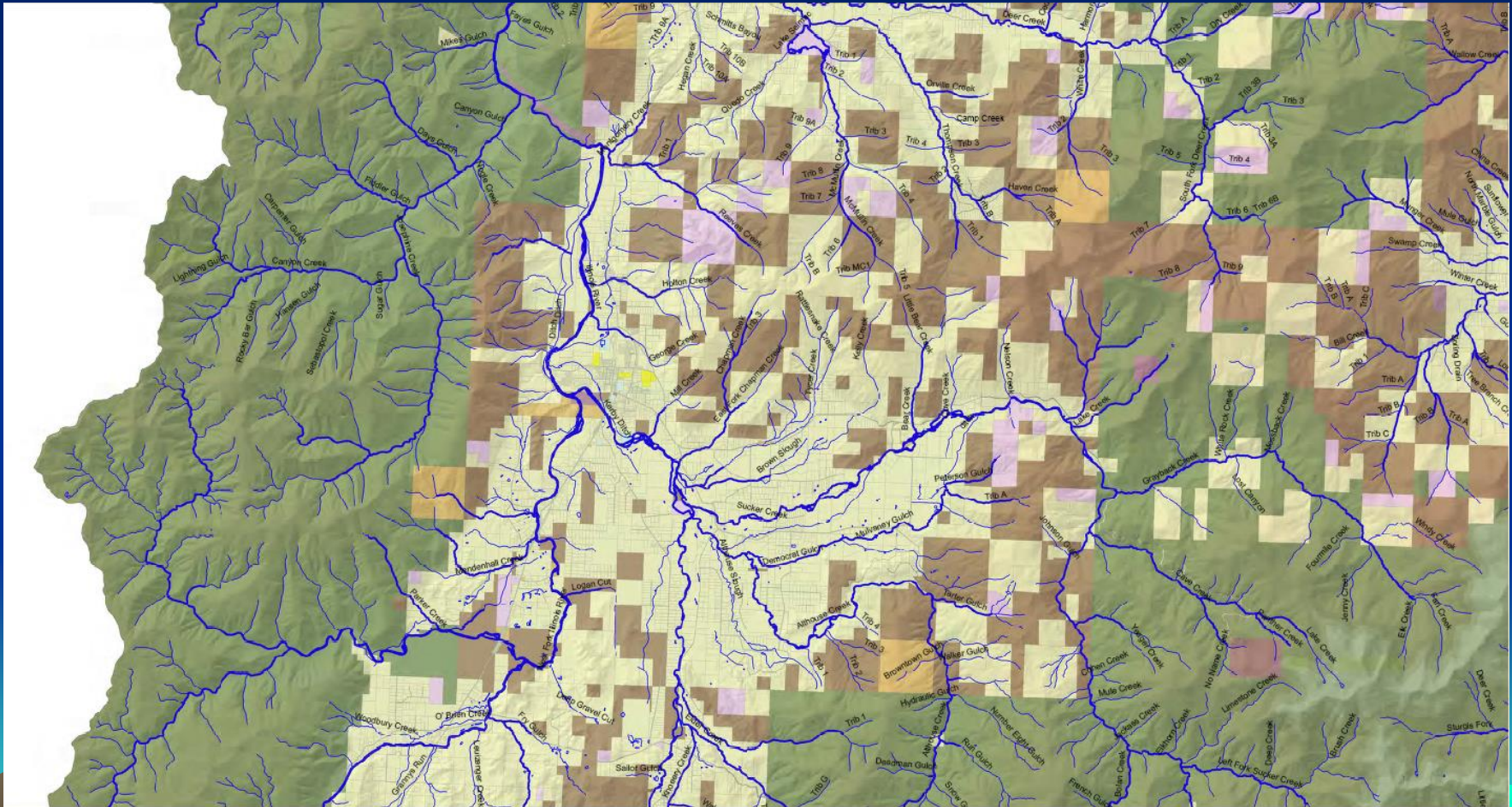
Impacts of SB 401

on Private Property in
The City of Gold Hill



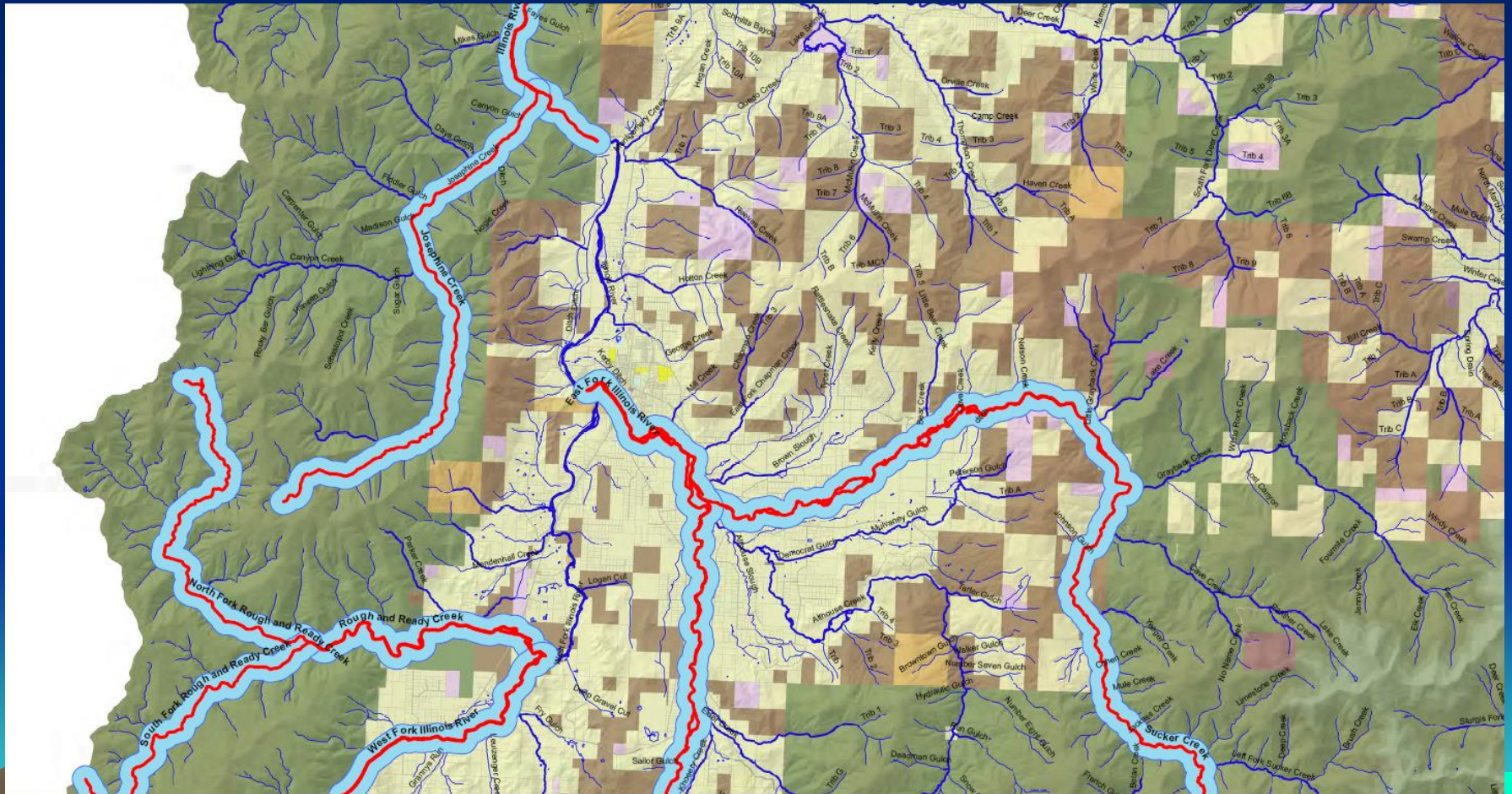
Impacts of SB 401

on Private Property in
The Illinois Valley



Impacts of SB 401

on Private Property in
The Illinois Valley



National Park Service
Private
School District
State
Rogue River Wild & Scenic Buffer - 1/4 Mile
Hicks River Wild & Scenic
Hicks River Wild & Scenic Buffer - 1/4 Mile

