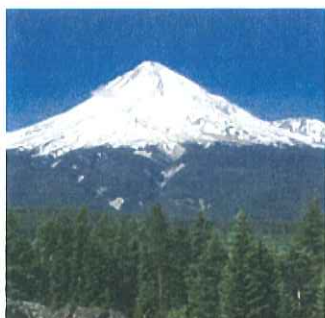


MEASURE: HB 3492
EXHIBIT: 20
HOUSE ENERGY & ENVIRONMENT
DATE: 4/11/13 PAGES: 4
SUBMITTED BY: J. LEDGER



HOME | CONTACT US | HATFIELD SCHOOL OF GOVERNMENT



ABOUT OCP

SERVICES

PROGRAMS

MEDIATORS & FACILITATORS

RESOURCES

PROJECTS

Current Projects

Completed Projects

Cultural/Historic

Economic/Business/
Government Regulation

Human Resource/Workforce/
Health Care

Land Use

Natural Resources

Transportation

Find A Project By Region

About Oregon Consensus (OC)

Our customers are...

- Local, regional, state and Tribal government, or other Oregon public bodies
- Federal agencies working on Oregon issues
- Anyone who has a public policy dispute with the entities above
- Anyone wishing to mediate an appeal to the Land Use Board of Appeals [\(LUBA\)](#)



Use OC when you need...

- Help assessing a conflict and identifying opportunities for collaborative solutions
- Neutral mediation
- Broad public agreement on controversial or technical issues
- Workable solutions that leverage the knowledge of diverse stakeholders

We mediate diverse issues, including...

- Air, water and land quality • Climate • Fish and wildlife • Forests • Energy • Mining • Solid or hazardous waste • Transportation • Agriculture • Land use • Urban growth • Economic development • Public health and safety • Housing • Education • Civil rights • Cultural diversity • Native American Issues • Rulemaking • And more •

Get started with OC [here's how...](#)

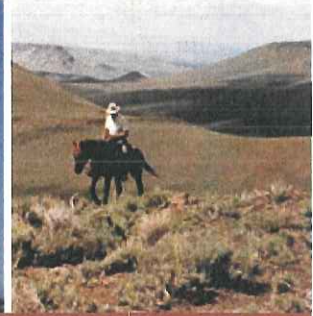
[Learn more about OC](#)

HOME | ABOUT OCP | SERVICES & PROGRAMS | MEDIATORS & FACILITATORS | RESOURCES | PROJECTS
NEWS & EVENTS | CONTACT US

National Policy Consensus Center
Mark O. Hatfield School of Government, College of Urban & Public Affairs, Portland State University © 2005
site design and development by Portland Networks Internet Group



HOME | CONTACT US | HATFIELD SCHOOL OF GOVERNMENT



ABOUT OCP

SERVICES

PROGRAMS

MEDIATORS & FACILITATORS

RESOURCES

PROJECTS

Current Projects

Completed Projects

Cultural/Historic

Economic/Business/
Government Regulation

Human Resource/Workforce/
Health Care

Land Use

Natural Resources

Transportation

Find A Project By Region

Programs

[Oregon Consensus](#) programs encompass a broad range of common public policy topics relating to economic development, land use, transportation, natural resources and human services. While collaboration [services](#) are not limited to these program areas, specialized programs allow Oregon Consensus to target efforts to expand collaboration in the most contentious policy areas, to develop a body of knowledge about effective approaches in these areas, and to build the expertise of neutrals to mediate highly technical issues on specific topics. Oregon Consensus programs include:

[Community and Economic Development and LUBA](#)

[Natural Resources](#)

[Transportation](#)

[Human Services, Education and Health Care](#)

[Evaluation of Collaborative Agreement Seeking Processes](#)

HOME | ABOUT OCP | SERVICES & PROGRAMS | MEDIATORS & FACILITATORS | RESOURCES | PROJECTS
NEWS & EVENTS | CONTACT US

National Policy Consensus Center
Mark O. Hatfield School of Government, College of Urban & Public Affairs, Portland State University © 2005
site design and development by Portland Networks Internet Group

Table 44: 2017 Total Risk for all Source Categories at the 80th Percentile Emission Concentrations

Area Wide All Pollutant Ranking (Times Above Benchmark 80 th Percentile)	White Paper Category Detail (Times Above Benchmark 80 th Percentile)
1. Residential Wood Combustion (38)	Residential Wood Combustion (38)
2. On Road Mobile (35)	1. On Road Mobile Gas (29) 2. On Road Mobile Diesel (6)
3. Area Other (24) Note: risk in this category is dominated by structural fires, most of which are accidental. As a result, this category is not a top priority.	1. Industrial Fuel Use (2) 2. Residential Heat Non Wood (1) 3. Asphalt Use (1)
4. Construction (12)	1. Construction Diesel (11.5) 2. Construction Gas (0.5)
5. Non Road Mobile Other (11)	1. Non Road Mobile Diesel (6) 2. Non Road Mobile Gas (5)
6. Lawn & Garden (10)	1. Non Road Mobile Diesel (9) 2. Non Road Mobile Gas (1)
7. Solvent Use (7)	1. Solvent-Coating (4) 2. Consumer Products (3)
8. Point (5) <i>(All Industry)</i>	Point (5)
9. Airport (3)	Airport (3)
10. Rail (2)	Rail (2)
11. Residential Open Burning (2)	Residential Open Burning (2)

From: Portland Air Toxics Solutions Committee Report and Recommendations

April 2012

Facilities Subject to HB 3492

Absorbent Technologies, Inc.	starch-based soil amendments
ARCLIN SURFACES LLC	surfaces/laminates
ARMSTRONG WORLD INDUSTRIES INC	ceiling materials
Bear Mountain Forest Products, Inc. Golden Fire Pellets	wood products
Boise Cascade Wood Products, L.L.C.	wood products
Boise Cascade Wood Products, L.L.C. Elgin Plywood & Stud Mill	wood products
Boise Cascade Wood Products, L.L.C. Island City Particleboard	wood products
Boise Cascade Wood Products, L.L.C. Medford	wood products
Boise Cascade Wood Products, L.L.C. Rogue Valley	wood products
Boise White Paper, LLC	paper
CARESTREAM HEALTH INC	imaging substrate
CASCADE GENERAL	ship building
CASCADE PACIFIC PULP HALSEY PULP MILL	paper
COLLINS PRODUCTS LLC	wood products
Covanta Marion, Inc.	energy
DAIMLER TRUCKS NA LLC	trucks
ELKAY WOOD PRODUCTS CO	furniture
ENTEK INTERNATIONAL LLC	battery separators
EVRAZ Inc, NA	steel
FCC COMMERCIAL FURNITURE INC	furniture
FIBER-FAB LLC	tub/showers
FLAKEBOARD AMERICA LTD - DURAFLAKE PARTICLEBOARD	wood products
Freres Lumber Co. Inc. #1, 2, & 4	wood products
GEORGIA PACIFIC CONSUMER PRODUCTS LP WAUNA MILL	paper
GEORGIA-PACIFIC TOLEDO LLC	paper
Gunderson LLC	rail cars/barges
HAMPTON LUMBER MILLS INC WARRENTON	wood products
International Paper Company Albany Paper Mill	paper
KAL KUSTOM ENTERPRISES	rec boats
MARQUIS CORP	hot tubs
MASTERBRAND CABINETS INC - GRANTS PASS OPERATIONS	cabinets
MILES FIBERGLASS & PLASTICS INC	fiberglass products
MILES FIBERGLASS & PLASTICS INC OTTY RD	fiberglass products
Monaco RV, LLC	rec vehicles
Northwest Aluminum Specialties, Inc.	aluminum
ORENCO SYSTEMS INC	septic tanks
Portland General Electric Company PGE Boardman	energy
ROSEBURG FOREST PRODUCTS CO - EWP FACILITY	wood products
ROSEBURG FOREST PRODUCTS CO COQUILLE PLYWOOD	wood products
Roseburg Forest Products Co. Dillard	wood products
ROSEBURG FOREST PRODUCTS CO-RIDDLE PLYWOOD #4	wood products
SHAW'S FIBERGLASS & PLASTICS INC	fiberglass products
SIERRAPINE LTD MEDITE DIV	wood products
SP NEWSPRINT CO LLC	paper
SR SMITH LLC	diving boards, pool equip
TDY INDUSTRIES INC DBA WAH CH ANG	defense metals
TILLAMOOK LUMBER CO	wood products
TIMBER PRODUCTS CO MEDFORD	wood products
ZIEMAN MANUFACTURING - MCMINNVILLE PLANT 107	chassis for RVs etc.

