

Achievement Compact Presentation to the Education Subcommittee of Ways and Means

Portland State University and Multnomah County's "All Hands Raised" project

Presented by Dr. Randy Hitz, Dean, PSU Graduate School of Education

Process and Governance

All Hands Raised (AHR) is Multnomah County's effort to create a seamless and more effective education and social service system to ensure greater student success. It was established in 2009 based on the work of the STRIVE project in Cincinnati, the Portland Schools Foundation, and over 25 years of work by the Leadership Roundtable in Multnomah County.

The governance structure includes a board of directors, a large advisory council, steering committee, and data team. President Wiewel serves on the advisory council chaired by the CEO of NW Natural. I serve on the steering committee and PSU has a contract with AHR to help lead the data team work.

Six school districts in Multnomah County are enthusiastically involved in AHR along with PSU, PCC and several other higher education institutions as well as a wide variety of social service and other community agencies.

One important element of the work is to collect data at key points in children's lives in order to assess progress and develop plans for improvement. In Portland we are tracking data in five goal areas: kindergarten readiness; support for youth inside and outside of school; academic achievement; post-secondary school entry; and post-secondary school completion. We use research to help identify the key data points that leverage more success.

School district and community-based organizations come together in region-wide planning teams, called "Collaboratives," to identify collective action that all organizations can work on together to help improve results on the data indicators. We currently have four very active collaboratives: Kindergarten Readiness; Communities Supporting Youth, Eliminating Racial Disparities, and "Ninth Grade Counts."

Data

All Hand Raised is based upon a set of 16 key performance indicators in a "Cradle-to-Career" pathway beginning with birth weight and ending with college graduation. Academic indicators, such as, 3rd grade reading achievement and 8th grade mathematics achievement, combine with community support indicators, such as, regular attendance, successful transition from primary school to secondary school and access to higher education, to form the trajectory.

Results

While it is too early to have complete data on results, we are collecting this as the collaboratives' strategies are implemented. However, to demonstrate that what we are doing really improves student success, initial results of the 9th Grade Counts Collaborative indicate that targeted students earned more total credits toward graduation, the percentage of students "on-track to graduate" increased by 12.2 percentage points, and targeted student attendance was 2.4% higher than other students. We are confident in results such as these as more of the strategic actions are implemented.

How to use the compact?

- Bring together schools, higher education institutions and community groups to share a common agenda and responsibility for student success.
- Develop collective impact, making all education and community groups more efficient and effective.
- Gather meaningful data to guide continuous improvement and accountability.
- Report progress on a regular basis to the community.
- Foster better communication and working relationships among all stakeholders.

Issues in a large metropolitan area

- How large can compacts get and still be effective?
- How small can compacts be and still be effective?
- How many compacts can/should an urban university be involved in? And what are the priority partnerships?
- How can we build and sustain an infrastructure to support collective impact work?
- How do we relate to parallel and complementary efforts such as the Portland Metro Education Partnership?
- How do we relate to the OEIB priorities for:
 - A Network for Quality Teaching and Learning
 - An Early Childhood Hub
 - A STEM hub
 - Early literacy

all hands raised

All Hands Raised Partnership

*Education, Equity and Excellence
from Cradle to Career*

The All Hands Raised Footprint

Boundaries for Major Public School Districts Serving Multnomah County

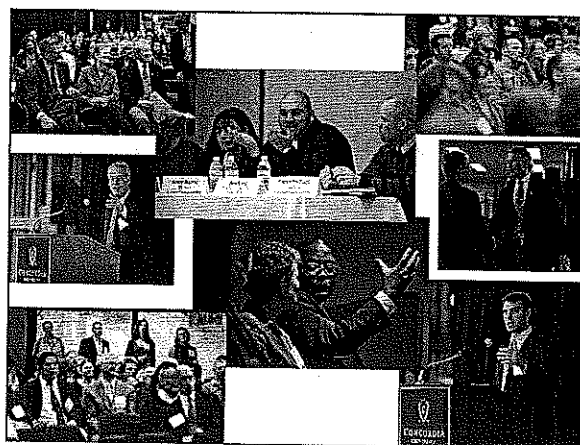
all hands raised
Multnomah County Partnership

Indicators of Student Success

all hands raised
Multnomah County Partnership

System of Shared Accountability

all hands raised
ACCOUNTABILITY SYSTEM 2012-13



From Isolation to Collective Impact

DEPENDENT BEHAVIOR

Diverse + Confusion

Inconsistent quality and sporadic accountability.

ISOLATION

Individual points of excellence exist, disconnected from one another with little system to scale up.

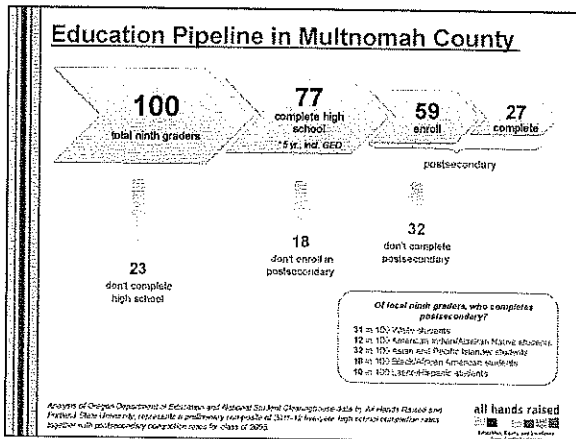
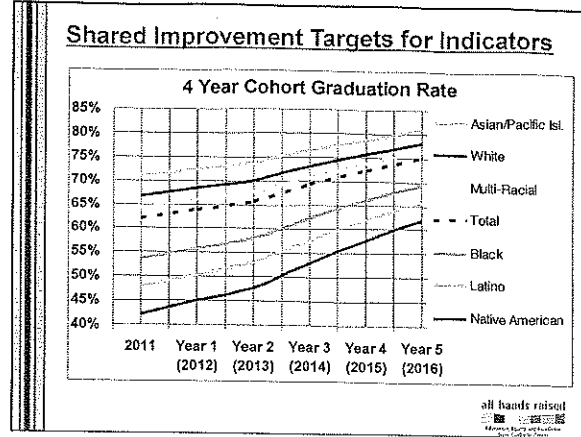
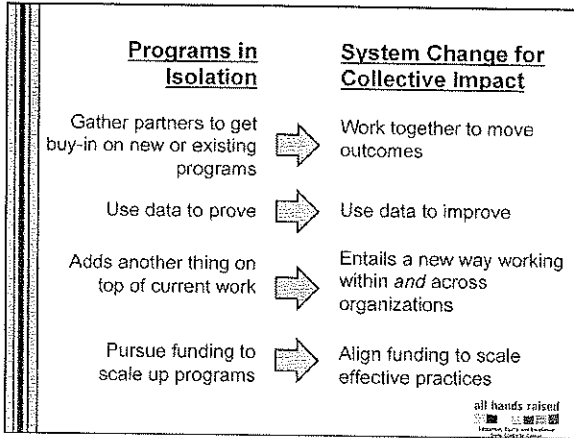
ALIGNMENT

Shared ideas and goals begin to materialize, repurposed budgets and reworked systems of measurement.

COLLECTIVE IMPACT

Collaborative action based on shared responsibility and accountability using aligned budgets, metrics, plans, and measurements creating efficiencies.

all hands raised
Multnomah County Partnership




Collaboratives

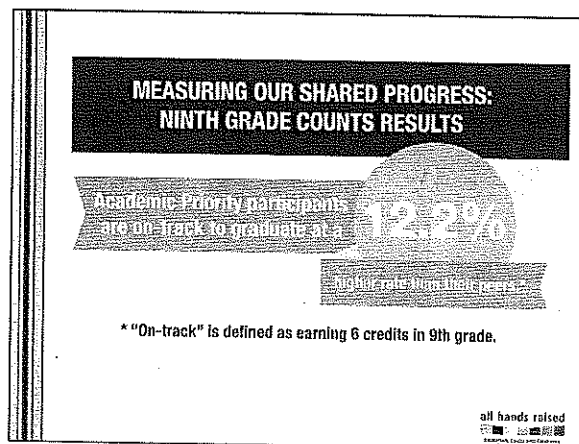
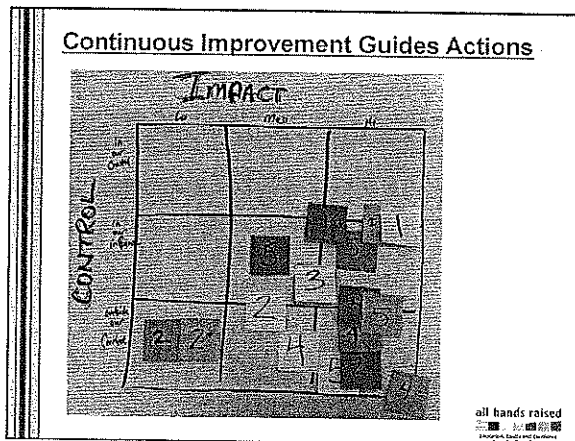
Communities Supporting Youth
 Convened with SUN Service System Coordinating Council and Portland State University's Center for Improvement of Child and Family Services

Eliminating Disparities in Child and Youth Success
 Convened with the Coalition of Communities of Color

Ninth Grade Counts
 Convened by All Hands Raised

Ready for Kindergarten
 Convened with Social Venture Partners and the Multnomah County Commission on Children, Families & Community

all hands raised




What's Next?

Partnering with the **Oregon Education Investment Board** to develop a pilot for Regional Achievement Compacts

Focus:

- Building shared community ownership for student success across Oregon
- Creating a culture of Continuous Improvement



What's Next?

Supporting our Fellow Oregonians

All Hands Raised providing technical assistance in:

- ✓ Crook & Deschutes Counties
- ✓ Douglas County

Through support from the Oregon Community Foundation



What's Next?

Launching a Fifth Collaborative in 2013:

Focus on Career and College Pathways



What's Next?

Publication on Indicator Data & Partnership Overview

Publication date: May, 2013

Purpose:

- Share baseline data and improvement targets for all indicators
- Tell the story of the Partnership

