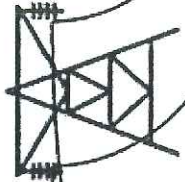


Wind turbines generate electricity. (1,000-3,000 Volts)



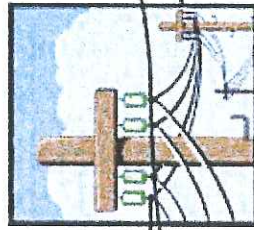
Step-up transformer increases voltage for efficient transport. (155,000-500,000 Volts)



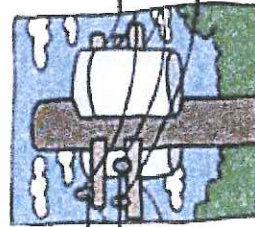
Transmission lines carry electricity over long distances.



Step-down transformer at substation near your house decreases voltage for distribution. (10,000 Volts)



Distribution lines carry electricity to your house.



The transformer on the pole decreases voltage before entering your house.



Electricity enters your house at 120 Volts.