

OREGON DEPARTMENT OF FISH AND WILDLIFE

2013-15 Governor's Budget
Ways and Means Subcommittee
on Natural Resources



Hunting Eastern Oregon



Crabbing on the Oregon Coast



First steelhead on the Deschutes River

Mission

To protect and enhance Oregon's fish and wildlife and their habitats for use and enjoyment by present and future generations.



Razor clams on the Oregon Coast



Habitat work on Circle Creek near Seaside



EE Wilson Wildlife Area Youth Outdoor Day near Corvallis



Key Statutes

Oregon Wildlife Policy (ORS 496.012)

Wildlife shall be managed to prevent serious depletion of any indigenous species and to provide the optimum recreational and aesthetic benefits for present and future generations of the citizens of this state.

Food Fish Management Policy (ORS 506.109)

Food fish shall be managed to provide the optimum economic, commercial, recreational and aesthetic benefits for present and future generations of the citizens of this state.



Agency Principles

- Effective relationships based on trust & confidence
- Proactive & solution-based management based on sound science
- Work as a team to accomplish our mission
- Promote workforce enhancement
- Fiscal integrity

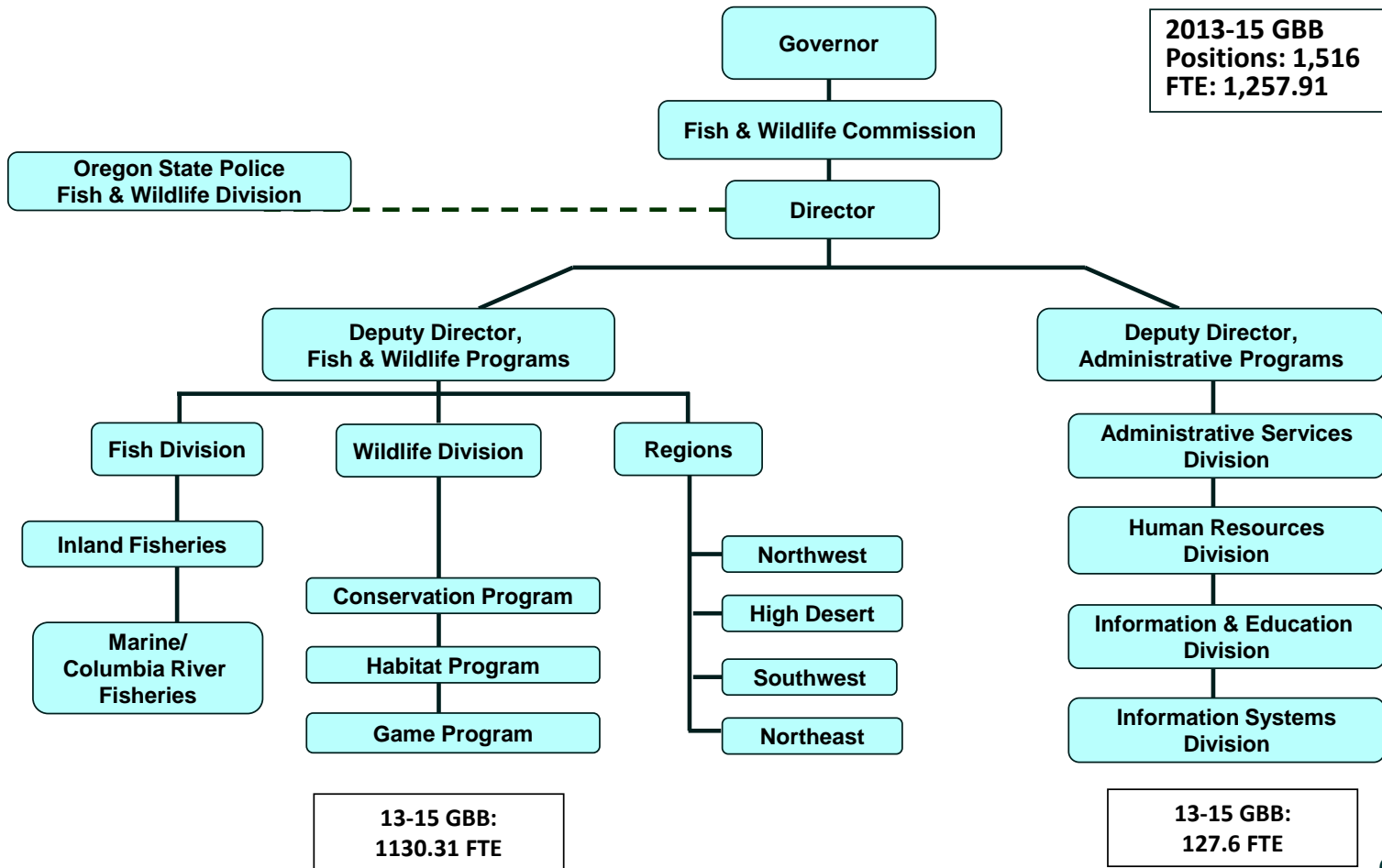
*Related to KPM #7
Customer Service 87% of respondents rated as good or excellent*



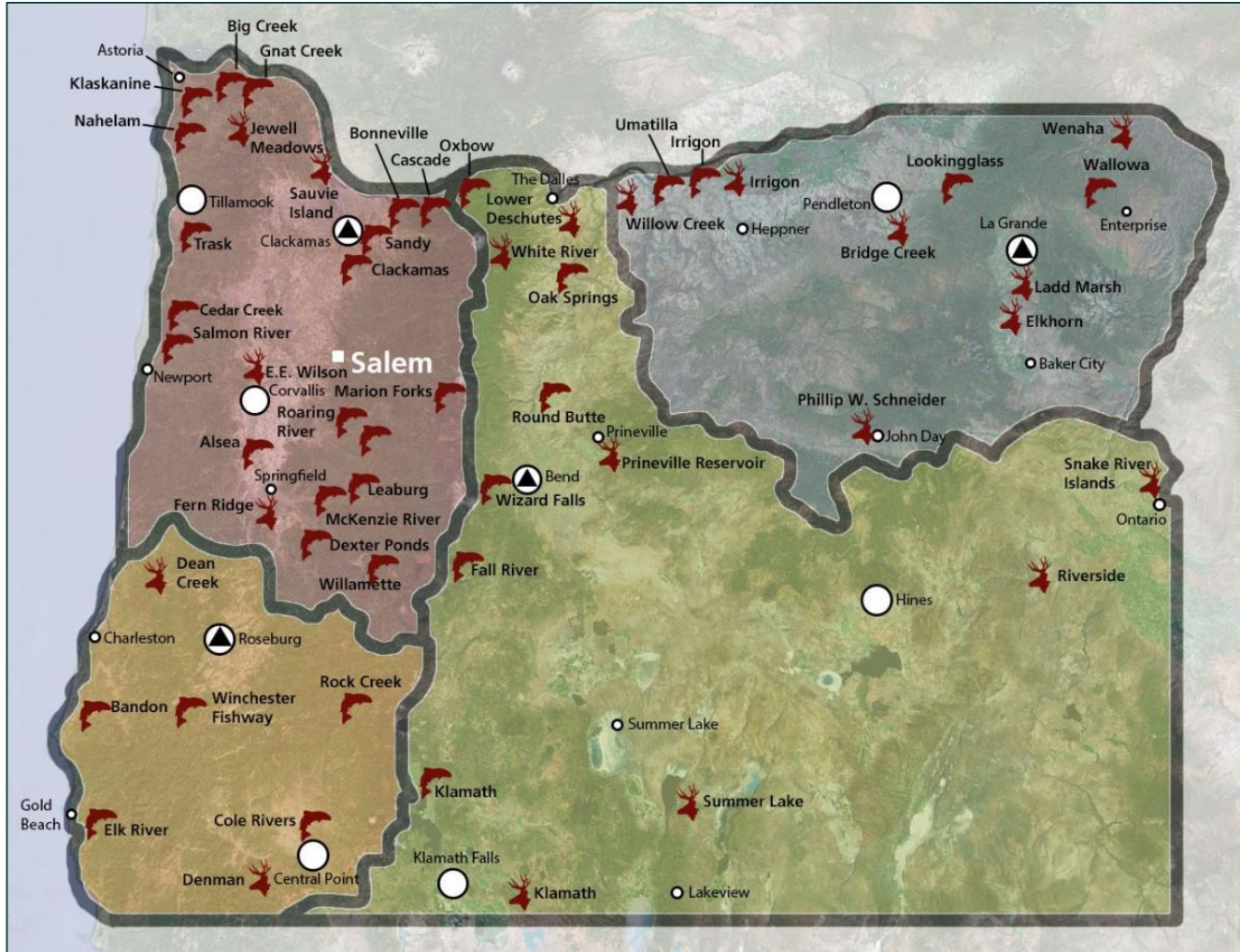
Agency Goals

- Provide leadership in conserving Oregon's fish and wildlife resources
- Maintain and enhance fishing, hunting and wildlife viewing opportunities
- Promote workforce development
- Ensure sustainable service to Oregonians by seeking diverse funding for the department
- Effectively respond to emerging water and energy issues

Agency Organization



Offices & Facilities



Fish & Wildlife Commission



Bobby Levy
Chair
District 2



Michael Finley
Vice Chair
Western Oregon



Gregory J. Wolley
District 3



Laura Anderson
District 5



Bob Webber
District 4



Holly Akenson
Eastern Oregon

Fish & Wildlife Commission

Actions

- Joint meeting with CA Fish & Game in 2013
- Criteria for Director's performance evaluation
- New Commissioner orientation
- Video streaming of Commission meetings
- Going paperless in 2013

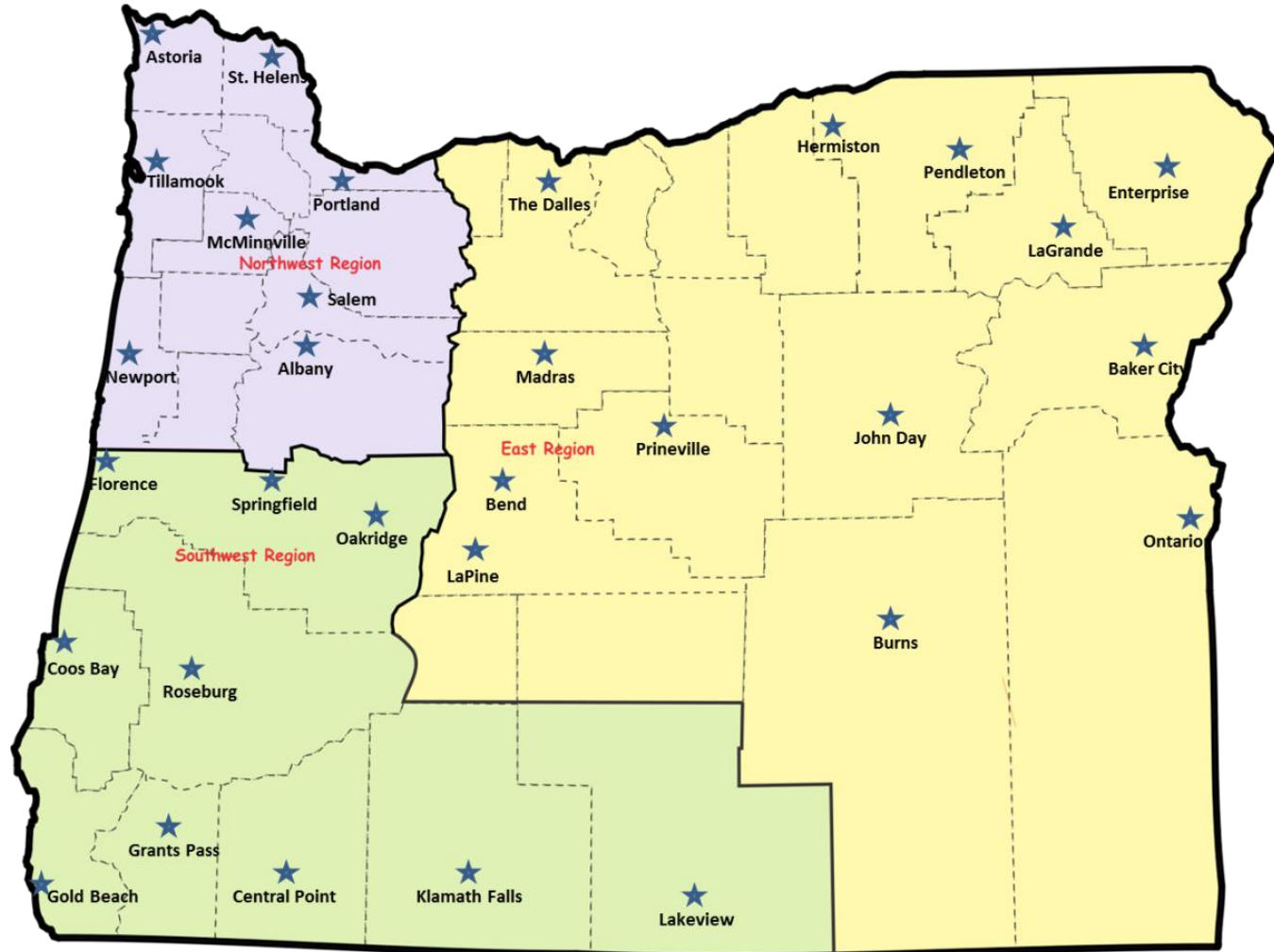
*Related to KPM #8
Boards & Commissions Best Practices*



Oregon Fish and Wildlife Commission
March 8, 2013

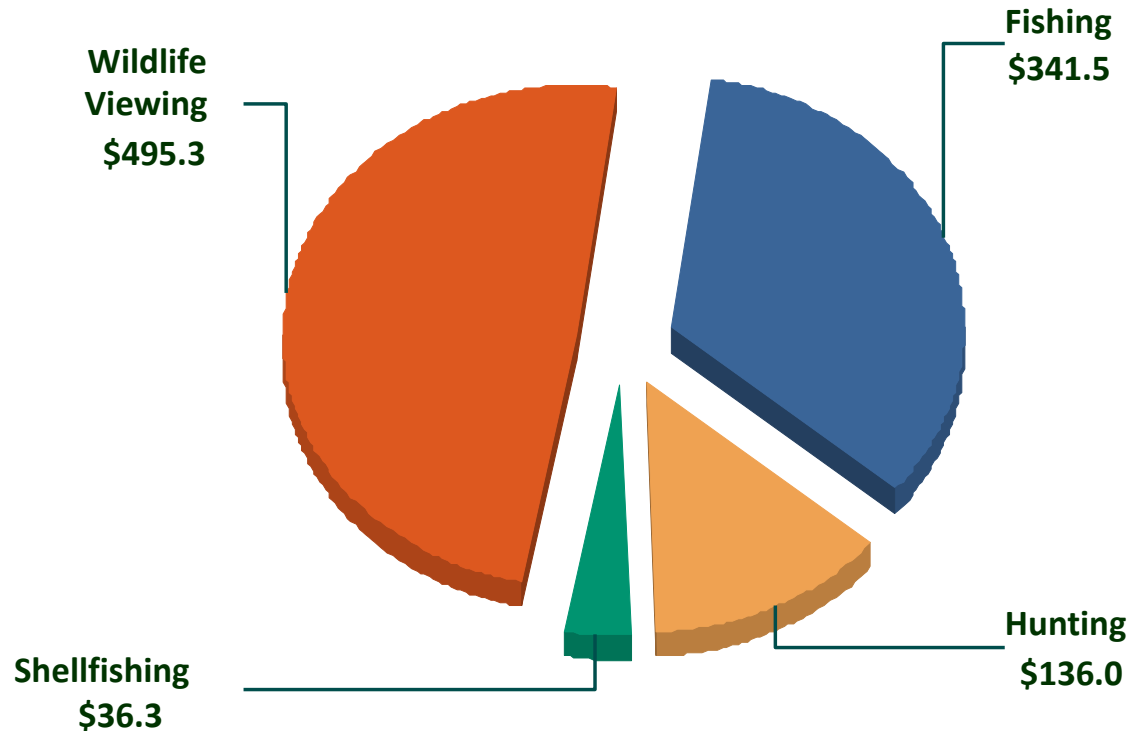
OSP Fish & Wildlife Division

Location of Sworn Officers (117 Statewide)



Economic Impact to Oregon

\$1 Billion Spent on Sport Fishing, Hunting & Wildlife Viewing

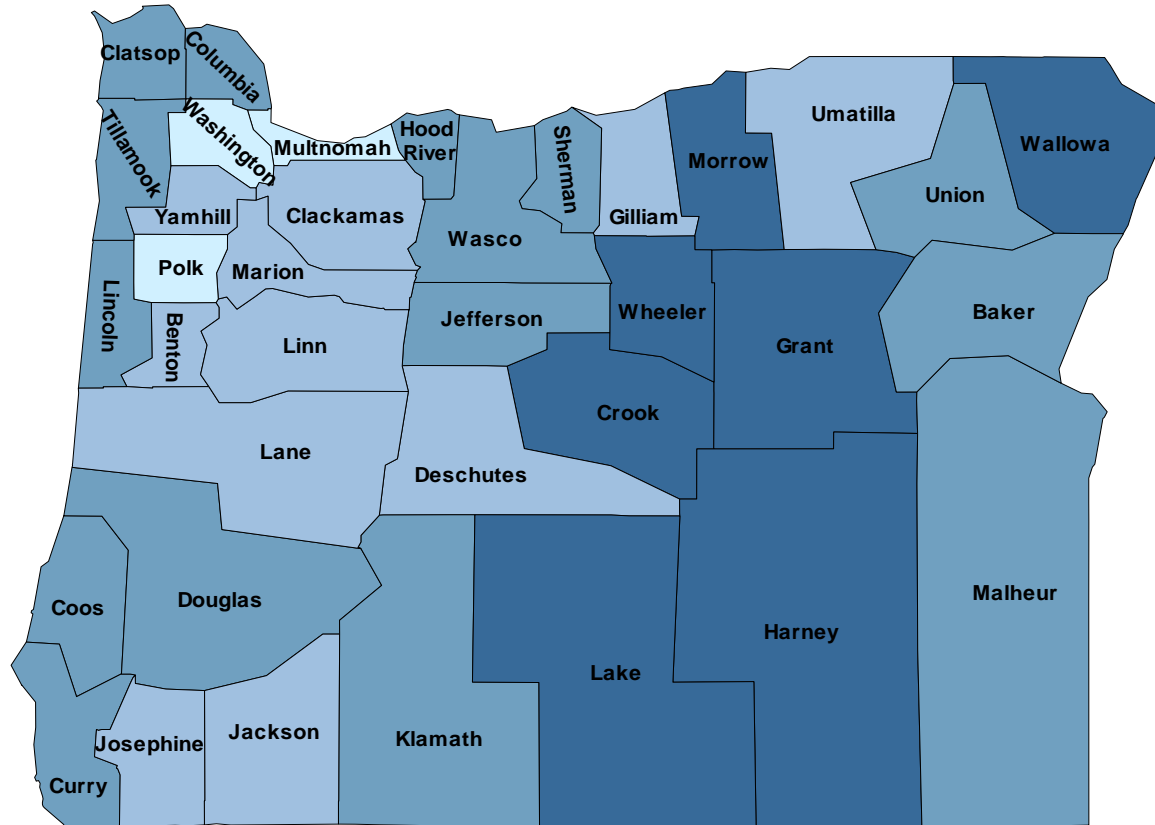


Travel and Local Recreation Expenditures: \$1,009,096,000

Note: Wildlife viewing includes expenditures only on trips where wildlife viewing was a planned activity.

Economic Impact to Oregon

Percentage of All Travel Spending



Percent of All Oregon Travel Expenditures Associated With Wildlife Recreation*

40% and above
 15% to 40%
 5% to 15%
 under 5%

All Oregon Travel Expenditures based on Oregon Travel Impacts, 2008p.

Budget Drivers

Angler/Hunter Derived Funding

User pay model

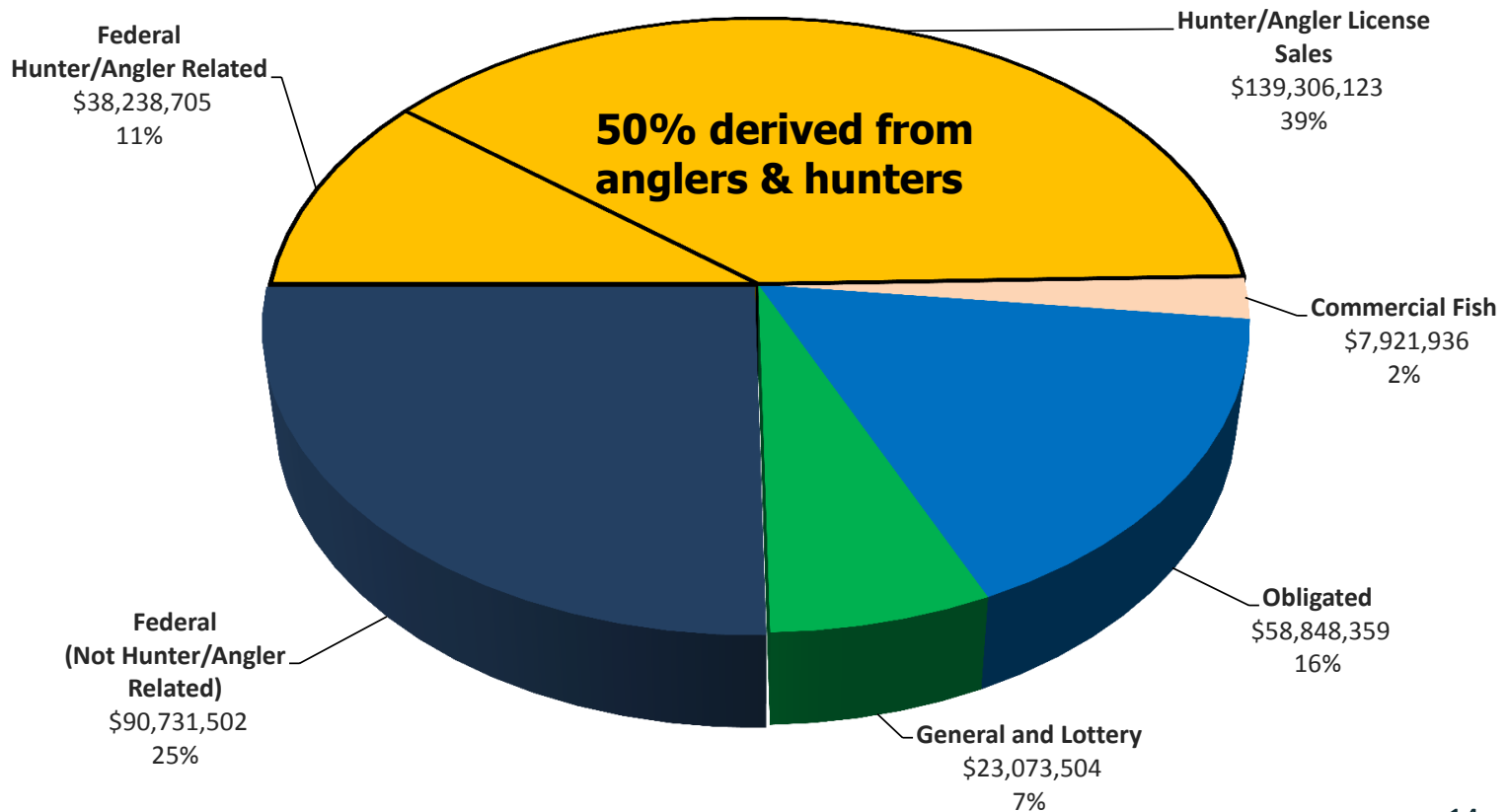
- Developed in 1930's
- Licenses and tag sales
- Federal excise tax on purchases of firearms, ammunition, boats, fishing tackle, etc.



Carl Shoemaker, Chief of Oregon Fish & Game Commission helped develop national model for funding fish and wildlife management

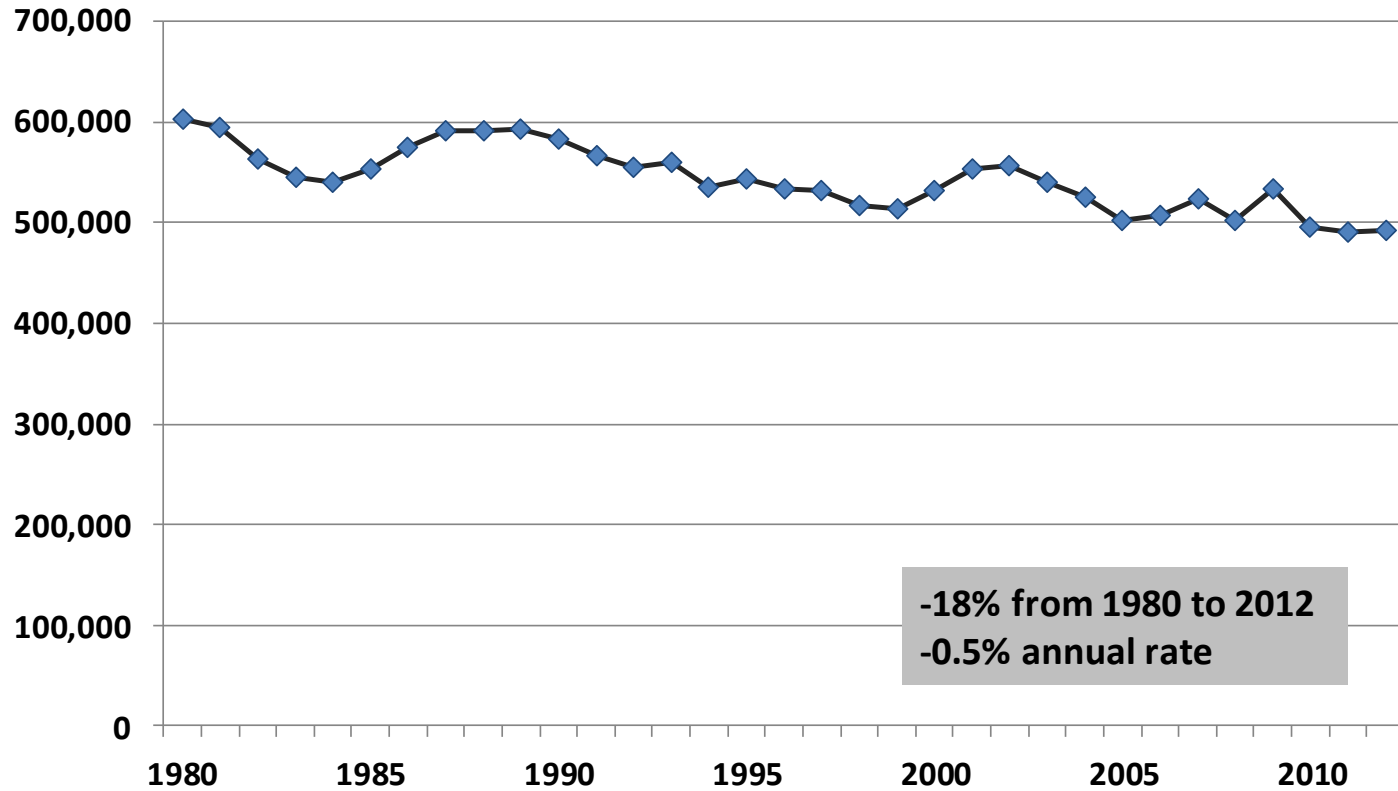
Budget Drivers

2013-15 Licenses and Federal Revenues



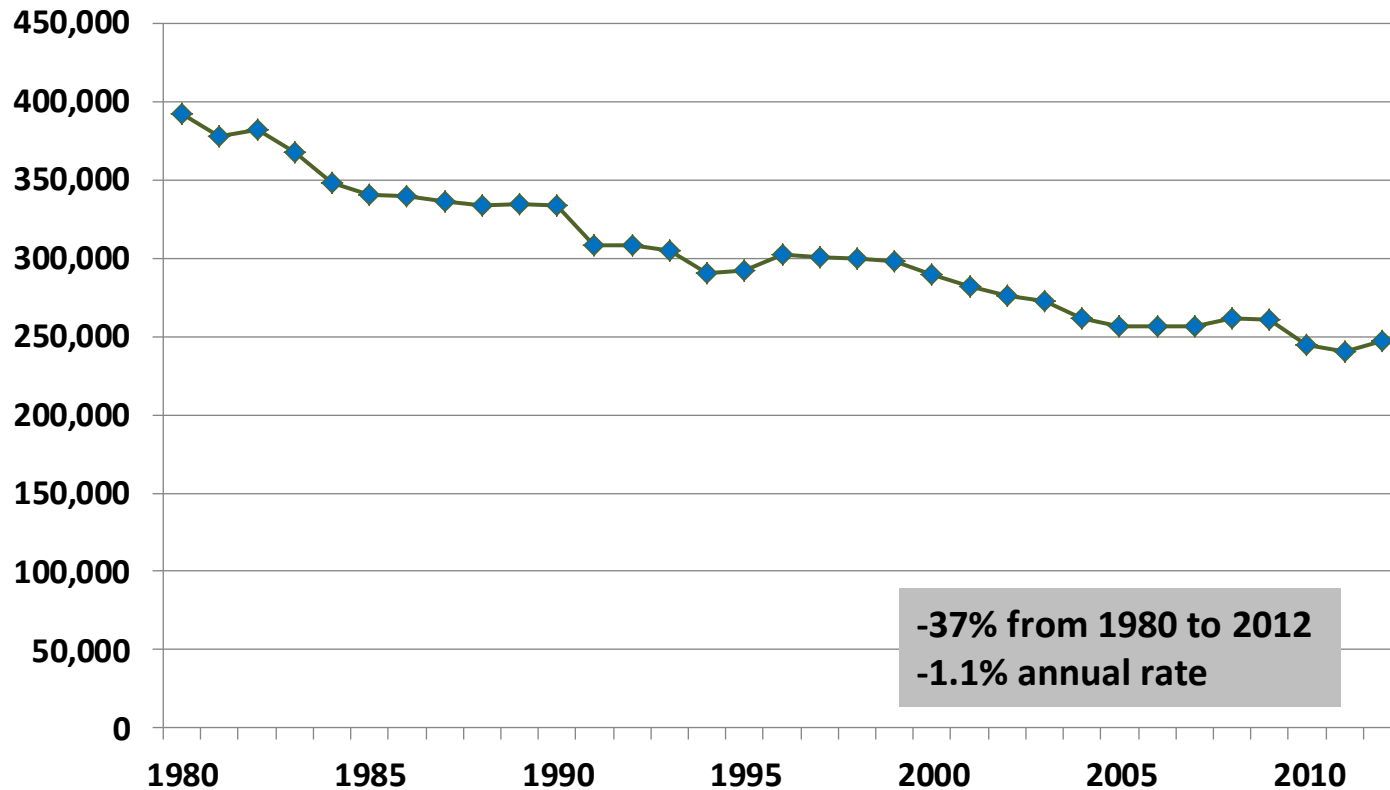
Budget Drivers

Resident Anglers



Budget Drivers

Resident Hunters



Recruitment - Retention - Reactivation

Increased Opportunities

- Juvenile Licenses & Sports Pac
- Mentored Youth Hunter Program
- Fishery Restoration & Enhancement
 - Mann Lake, Walton Lake, Antelope Flat Reservoir, and South Twin Lake
- Improve Fishing Access
 - New Docks, Trails, and Ponds
- Improve Opportunities
 - Diamond Lake ice fishing. High Lakes stocking
- Promotion and marketing campaigns



Summer Steelhead
Great Fish. Great Rivers.
Great Fun!


Disabled accessible dock at St. Louis Ponds

*Related to KPM #1 & #2
Hunting & Angling License Purchases*

Recruitment - Retention - Reactivation

“Where to” and “How to”

- Places to go
- Getting started guides
- Weekly Recreation Report
- Hunting and Fishing forecasts
- Workshops



50 PLACES TO GO FISHING WITHIN 60 MINUTES OF PORTLAND


LET'S GO FISHING ON SATURDAY. *Not enough time to go fishing? Think again—if you live in the greater Portland area, there are any number of places you can get to in less than an hour. Make sure you read the Oregon Sport Fishing Regulations before you go. Mileage and generalized directions are from Pioneer Courthouse Square. See ODFW Web site for interactive map: www.odfw.state.or.us.*

1. BARKTON PARK, Clackamas—26 mi., 40 min.
Salmon, steelhead, fly-fished trout
Clackamas River. Good bank access. Boat ramp. Picnic area.
Weekend day-use fee for non-registered boats and cars. Take Exit 12, off I-205, Fatacada/Mt Hood. Go east on Hwy. 212/224 Turn

Small stocked pond in Cady Community Park. Trout fall in spring. Year-round summer fishing. Pond is open only to youth 17 years old and under and persons who possess Disabled Hunting and Fishing Permits. Picnic area, restroom. I-5 south to Cady. The park is on the east side of Hwy. 99W, off Berg Hwy.

A BEGINNER'S GUIDE


WATERFOWL HUNTING



SAUVIE ISLAND WILDLIFE AREA

Some of the best duck hunting in the country takes place on Oregon's Sauvie Island Wildlife Area (SIWA) just 10 miles from downtown Portland.

At 15 miles long and 4 miles wide, Sauvie Island is the largest island in the Columbia River and a main stopping and abides. The possibilities include hunting from bench-style blinds in a corn field or from mallard blinds next to the shores of one of the island's many lakes. There are special blinds for people with disabilities. And there are hunts for those who want to roam wide open fields or even hunt from a boat.



Easy Angling in Central Oregon




Oregon Getting Started Upland Bird Hunting

Oregon offers some of the best upland game bird hunting in the West. The state's diverse habitats support nine hunted species of upland game birds—pheasants, chukar, Hungarian partridge, valley (California) quail, mountain quail, ruffed grouse, blue grouse, sage grouse, and wild turkey. There are upland hunting opportunities in every corner of the state and one upland bird season or another is open continuously from September 1 through January 31. Throw in a six-week spring turkey season and you can hunt upland game birds in Oregon for more than half of the year. Also, since many of the species share similar habitat preferences, you can hunt for several species at a time.

License requirements
A valid hunting license, upland game bird validation, and HIP (Habitat Information Program) validation is needed to hunt the 9 types of upland birds in Oregon, and these can be purchased online prior to hunting, except. Sage-grouse hunters need an additional permit because these hunting opportunities are limited entry. Turkey hunters need a turkey tag. ODFW stocks four wildlife areas in Western Oregon with pheasants to create additional hunting opportunity, these hunts require a special "fee pheasant" tag.

When to hunt
See the current Oregon Game Bird Regulations for season dates, but generally at least one upland game bird species will be open to hunting in September and

Hunting techniques
Similar methods are used to hunt pheasant, grouse, partridge, and quail. Some of these hunting techniques are described below. Though turkeys are an upland game bird, they aren't emphasized here because turkey hunters often use different strategies; see ODFW's turkey hunting brochure for more information. Sage-grouse hunting is also not covered because ODFW offers a limited number of permits.

Upland game bird hunting is mostly about walking. Walk through areas that are likely to hold birds. Knowing food and habitat preferences for the particular upland bird you are hunting will help locate promising hunting locations; see below for that information.

By far the best way to learn about upland game bird hunting is to go out on-site, with someone experienced.



Welcome to the ODFW Recreation Report

Hunting, Fishing, Wildlife Viewing

Sept. 25, 2012



Family Fishing Event




Recruitment - Retention - Reactivation

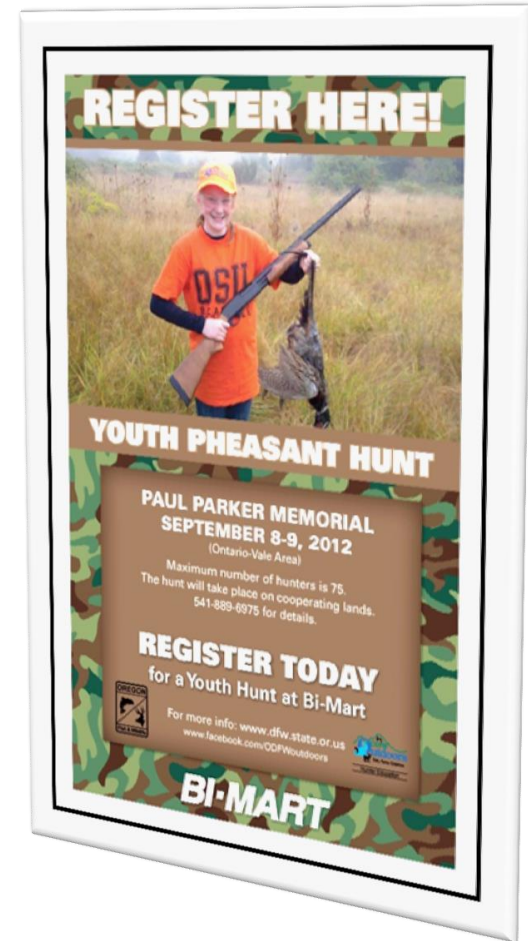
Grant's Getaways



Recruitment - Retention - Reactivation

Working with Partners

- **Bi-Mart**
 - Youth Pheasant Hunts promotion
- **Bowtech**
 - Archery trailers
- **Cabelas**
 - Fish For a Million Dollars contest
 - Hunter orange hats
- **Englund Marine**
 - Equipment for crabbing clinics
- **Northwest Sport Fishing Industry Association:**
 - Summer Steelhead marketing campaign
- **Fisherman's Marine:**
 - Staff for fishing workshops
- **Oregon State Parks:**
 - Crabbing and clamming workshops
 - Free Fishing Weekend
- **Travel Oregon**



Recruitment - Retention - Reactivation

New Approaches

The collage features several elements:

- Twitter:** A header for the ORdeptFishWildlife account with the text "Get short, timely messages from ORdeptFishWildlife." and a "Sign Up" button.
- Facebook:** A screenshot of the Oregon Department of Fish and Wildlife page, showing the profile picture, name, and a "Like" button. Below the profile is a video titled "Crabbing on the Oregon Coast" with a 5-star rating.
- Flickr:** The logo for Flickr, with the text "from YAHOO!" below it.
- YouTube:** A video player showing the same "Crabbing on the Oregon Coast" video, with a play button in the center and a progress bar at the bottom.



QR code for Columbia and other zone regulations updates

Recruitment - Retention - Reactivation

Fishing Locations

Coming in 2014 – Integrated Fishing Map and Regulations for Smart Phones and Tablets



Recruitment - Retention - Reactivation

Legislative Concept

House Bill 2252

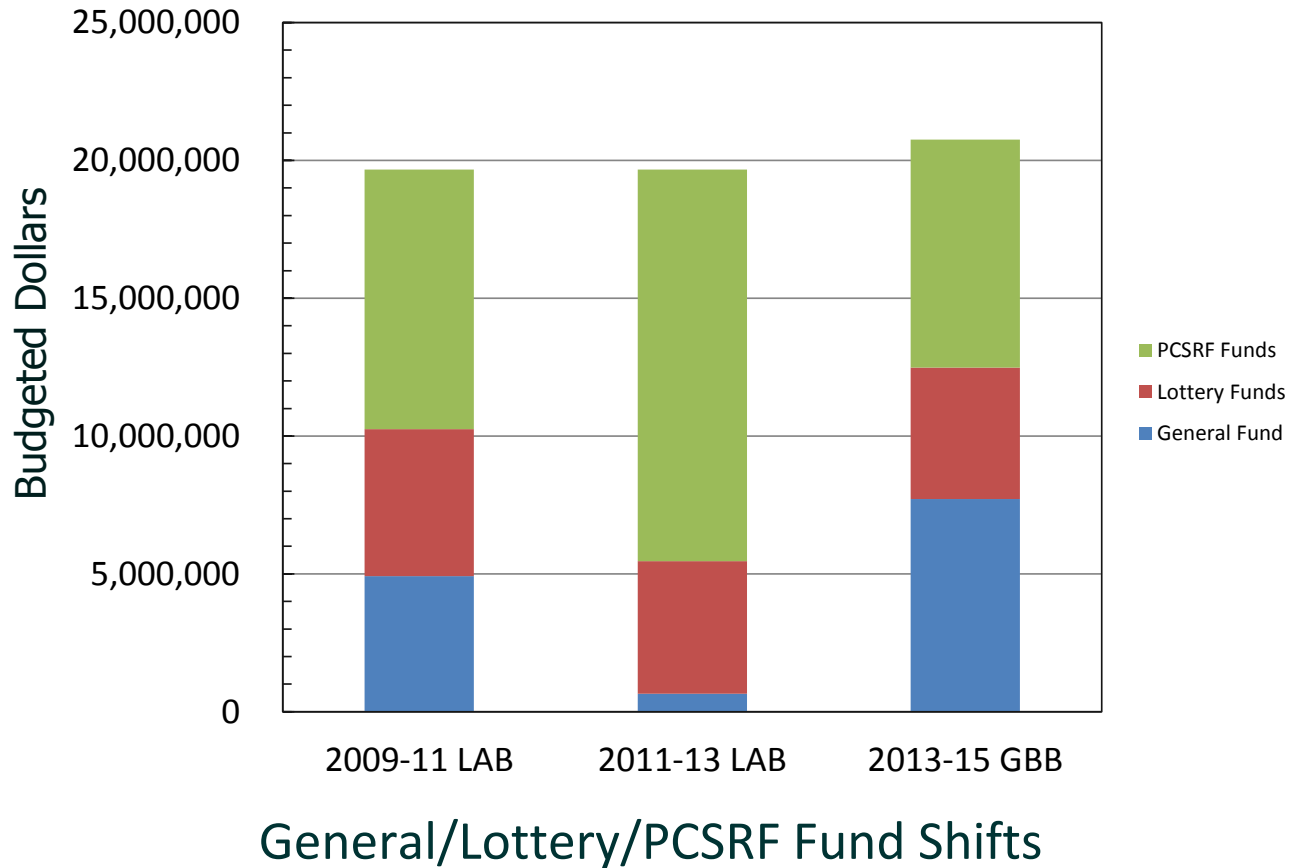
- Resident fees for active military
- Multi-year licenses
- Adjustment of vendor fees



Point of Sale System at Fred Meyer

Budget Drivers

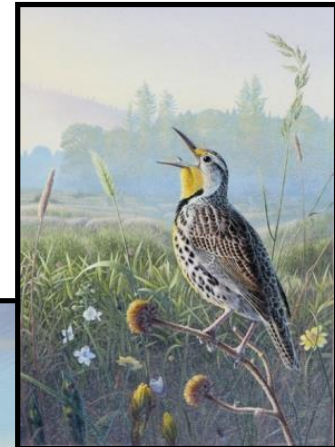
Conservation Program Funding



Budget Drivers

Conservation Program Funding

- Income tax check off
 - Supports nongame wildlife
- Habitat Conservation Stamp
 - Sales help restore habitat for native species
- Wildlife area permit
 - Habitat improvement & wildlife viewing opportunities
 - Required for 9 wildlife areas



2011 Habitat Conservation Stamp



2012 Habitat Conservation Stamp

Budget Drivers

Conservation Program Funding



Wildlife Viewing

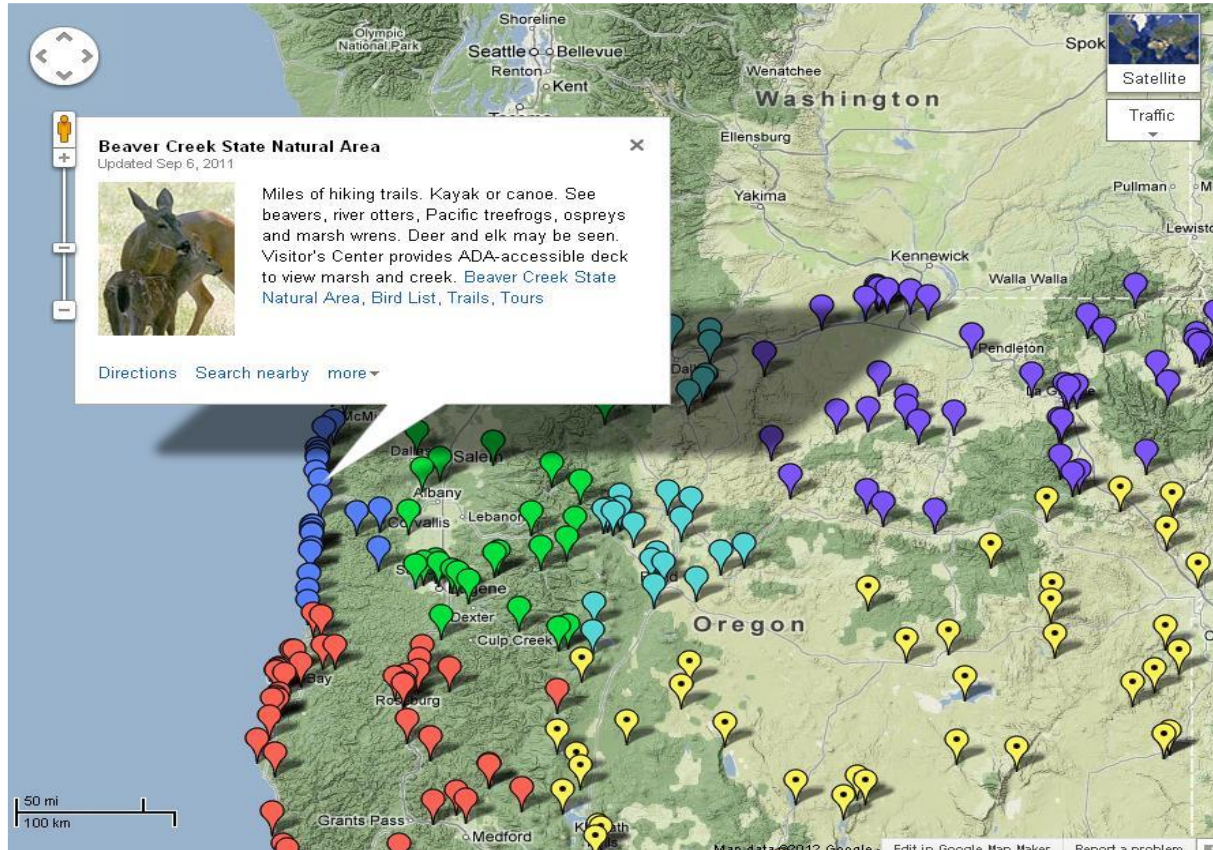
- 1.4 million participants each year
- Significant economic benefit to rural communities



Viewing platform at Ladd Marsh in NE Oregon 26

Budget Drivers

Wildlife Viewing



Oregon Wildlife Viewing Map: 235 great places to see wildlife

Program Efficiency & Effectiveness

Partnerships

- Cascades mountain goat reintroduction
- Habitat improvement projects
- Fire rehabilitation



Joint effort with Confederated Tribes of Warm Springs to restore mountain goats to Central Oregon

Program Efficiency & Effectiveness

Partnerships

- Cascades mountain goat reintroduction
- Habitat improvement projects
- Fire rehabilitation



South Hunter Creek Project with ODOT in SW Oregon

Program Efficiency & Effectiveness

Partnerships

- Cascades mountain goat reintroduction
- Habitat improvement projects
- Fire rehabilitation



Union County fire seeding project with private landowner (photos taken 2 years apart).

Program Efficiency & Effectiveness

Volunteers

- 2012 results
 - 15,799 volunteers
 - 234,689 volunteer hours contributed
 - \$6,513,617 value of volunteer time
- Volunteer program
 - Hosts
 - Instructors
 - Fish spawning and feeding
 - Habitat improvement
 - Grounds maintenance
 - Check stations
 - Wildlife & fish surveys and monitoring
- Volunteer advisory boards

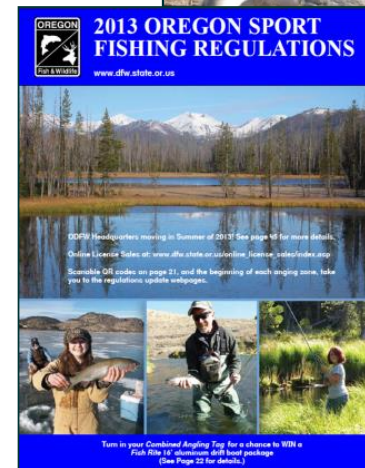
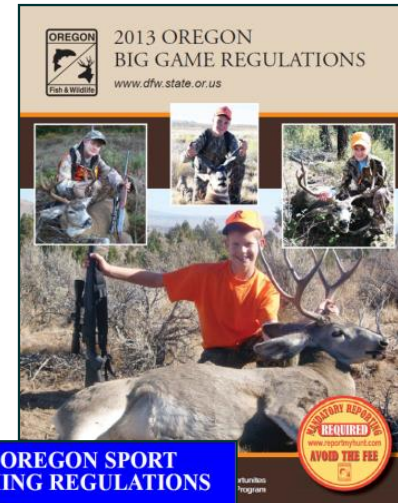


ODFW Volunteer Hosts at St Louis Ponds

Program Efficiency & Effectiveness

Efficiency & Cost Savings Efforts

- Reduced printed publications such as regulations
 - \$15,000 per year
- Fifteenmile Creek Winter Steelhead Monitoring
 - \$25,000 per year
- Hydro generation at Oak Springs Hatchery
 - \$25,000 per year
- Revised cell phone plans
 - \$72,000 per year
- Vehicle management
 - \$90,000 per year





Conclusion

- Our mission & how we are organized to deliver our mission
- Key budget drivers & actions to address those drivers
 - Implementing recruitment, retention, reactivation efforts
 - Seeking alternative ways to fund conservation programs
 - Taking actions to efficiently and effectively deliver programs

Wildlife Division

Program Areas

- Species management and conservation
- Technical assistance
- Habitat management and conservation
- Primarily license and federal funds



Private Lands Access

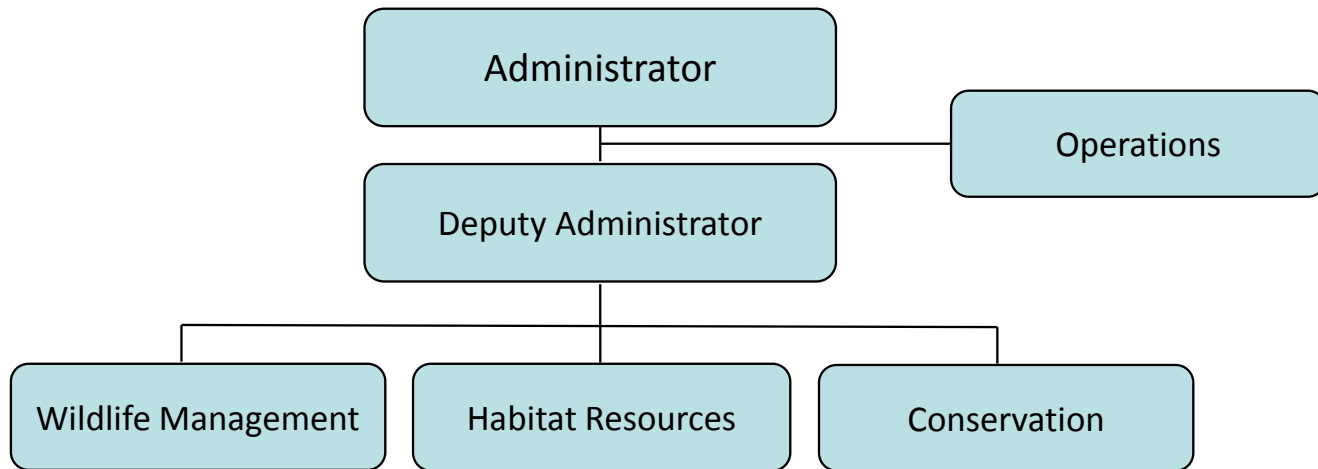


Pond Turtle Conservation



NE Oregon Moose

Wildlife Division



Wildlife Program:
\$69 M
FTE: 221.53



Wildlife Management

- Species management
- Research
- Damage
- Habitat improvement
- Hunting seasons



Columbia Basin Access

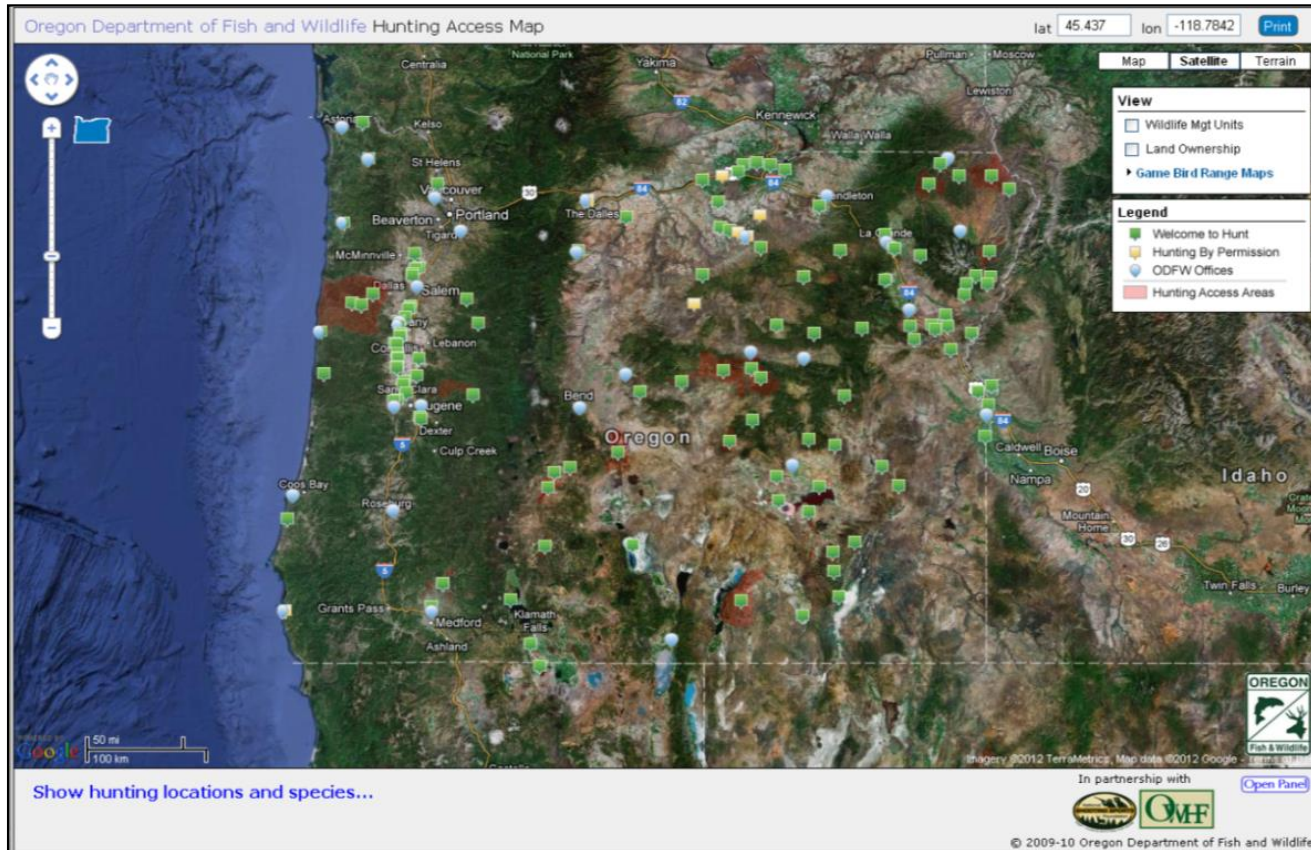


Opportunity



Sustainable Populations

Wildlife Management Oregon Hunting Map



*Related to KPM #1
Hunting License Purchases*

Wildlife Management



Wildlife Management



Game Surveys



Hunter Surveys

Wildlife Management Research

- Mule deer – cougar interaction
- Survival rates of bucks, does and fawns
- Population impacts



Radio collaring cougar in Mount Emily Unit



Collaring elk in rugged Northeast Oregon

Wildlife Management

Wildfires

- Role of fire in land management
- Impact on fish and wildlife
- Habitat impacts and rehabilitation



Rangeland drill used to reseed burned areas



Aerial view of Holloway Fire

Wildlife Management

Sage Grouse

- Goal – Avoid listing under federal ESA
- ODFW has primary responsibility for monitoring populations
- Collaboration on state conservation plan
- Post-fire rehab and monitoring
- Technical resources
- Habitat Restoration

*Related to KPM #5
Oregon Species of Concern - Wildlife*



Radio collaring sage grouse following wildfire



Wildlife Management

Habitat Restoration



Hatfield Ranch Juniper cutting

Wildlife Management

Wildlife Damage

- Goal - Address human wildlife conflicts
- Process for wildlife damage response
- Number of complaints reduced
- Damage prevention education for landowners on ODFW website
- Don't feed wildlife campaign
- Goose damage



Mule deer in haystacks



Goose damage in Willamette Valley

*Related to KPM #3
Wildlife Damage*

Habitat Resources

Program Purpose

- Provide guidance for land use activities that affect fish and wildlife habitat
- Provide technical assistance and tax incentives
- Consultation to other agencies with statutory requirements



Wildlife corridor on Highway 97



Culvert replaced to benefit fish

Habitat Resources

Energy and Mining

- Wind
- Solar
- Wave
- Transmission Lines
- LNG
- Mining



Conservation

Oregon Conservation Strategy

- Identifies 286 native species and 11 native habitats in need of conservation
- Serves as a blueprint for action by landowners, agencies, and others
- Helps prioritize investments and projects



Western Meadowlark



Columbia Whitetail Deer



Western Painted Turtle

Conservation

Conservation Strategy Actions

- Habitat Restoration – Statewide
 - 54,000 Acres treated
- Species Research & Monitoring
 - Raptors, Western Meadowlark
 - Wolverine, Pygmy Owls
- Invasive Species
 - 7,655 Watercraft inspections
- Outreach & publications



Removing invasive species from tsunami debris



Kids publications



Baker Co. Pygmy Owl

*Related to KPM #5
Oregon Species of Concern - Wildlife*

Conservation

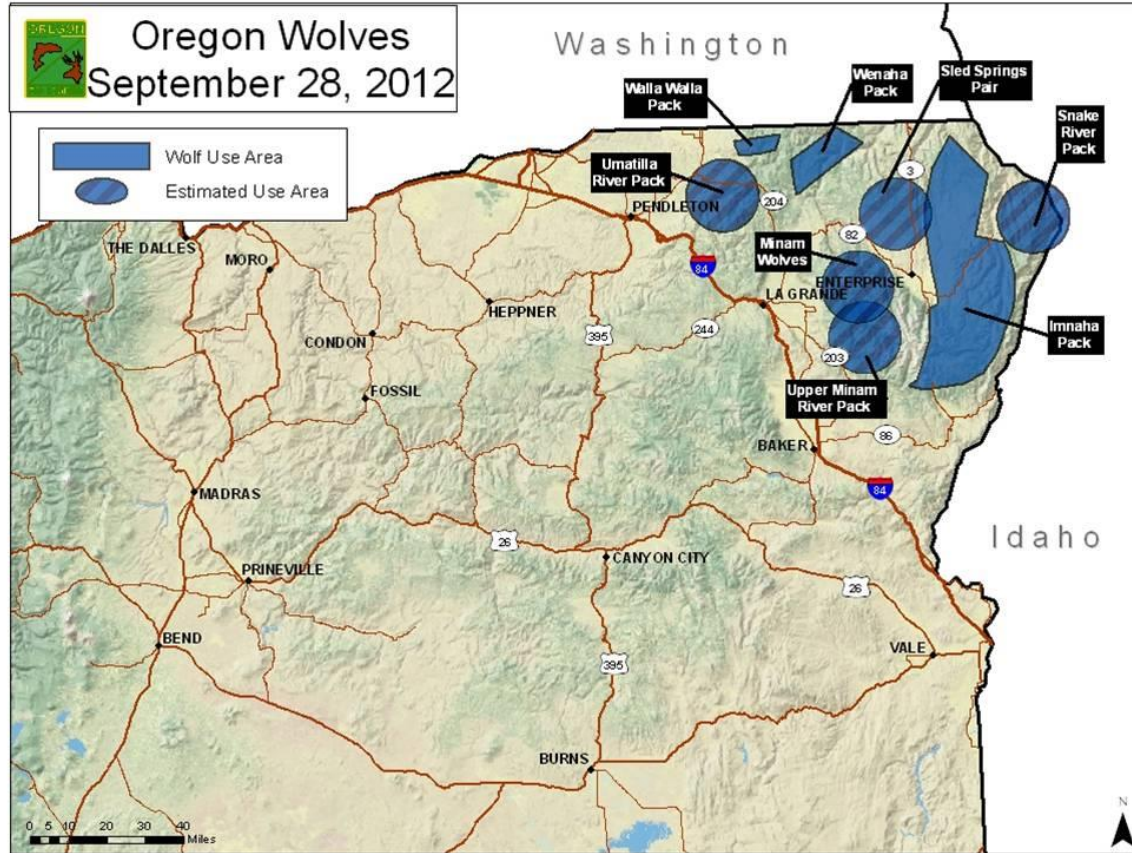
Wolves

- Blueprint for Delisting
- Livestock Depredation
- Deer/Elk/Cougar/Wolf interaction-Research
- Documentation of packs and population



97-pound male wolf collared Feb. 12, 2010

Conservation Wolves



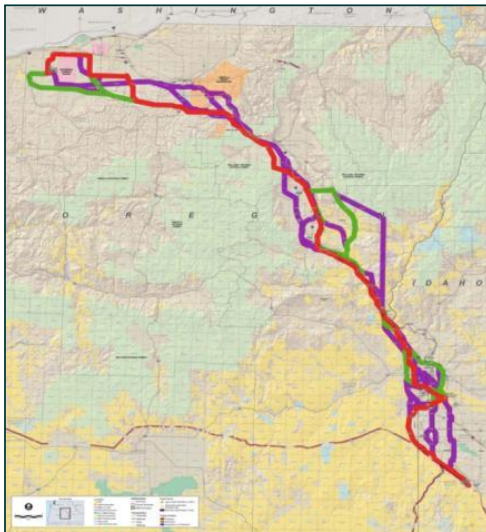
Wildlife Division

Policy Option Packages

- 7 Policy Option Packages
 - Limitation Requests
 - One time expenditures
 - Continuation of joint programs



Aquatic invasive species inspection station



Potential routes of Boardman to Hemingway transmission line



Expanded big game surveys

Wildlife Division

Legislative Concepts

- 4 Legislative Concepts
 - Extend existing programs
 - Wolf Plan implementation



Volunteer agents assist cougar management



Livestock killed by Umatilla pack

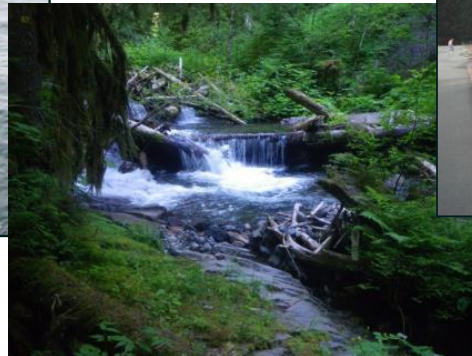


Landowner preference to reduce wildlife damage

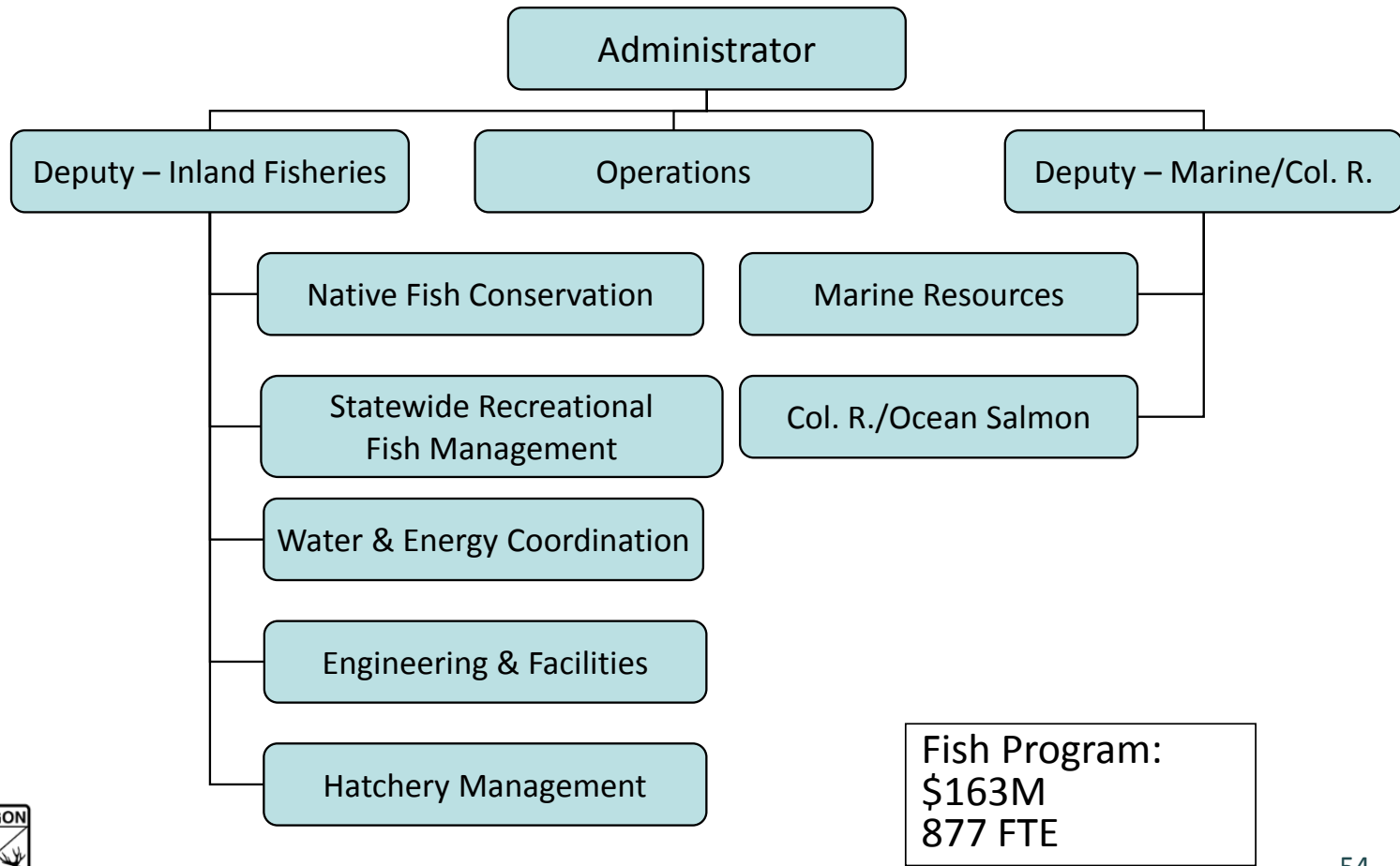
Fish Division

Program Emphasis

- We are Oregon's Fish Managers
 - Conservation is Job #1
 - Manage based on sound science
 - Maintain and enhance fishing opportunities
- Manage hatcheries to provide fisheries consistent with conservation objectives
- Advise on the habitat needs of fish (e.g., water, energy, land use)



Fish Division



Inland Fisheries

Program Purpose

- Provide policy direction for freshwater fisheries
- Protect and enhance native species
- Produce hatchery fish supporting fisheries linked to conservation plans
- Build opportunities for sport, commercial, and tribal fishers consistent with conservation



Inland Fisheries

Policy Issues & Opportunities



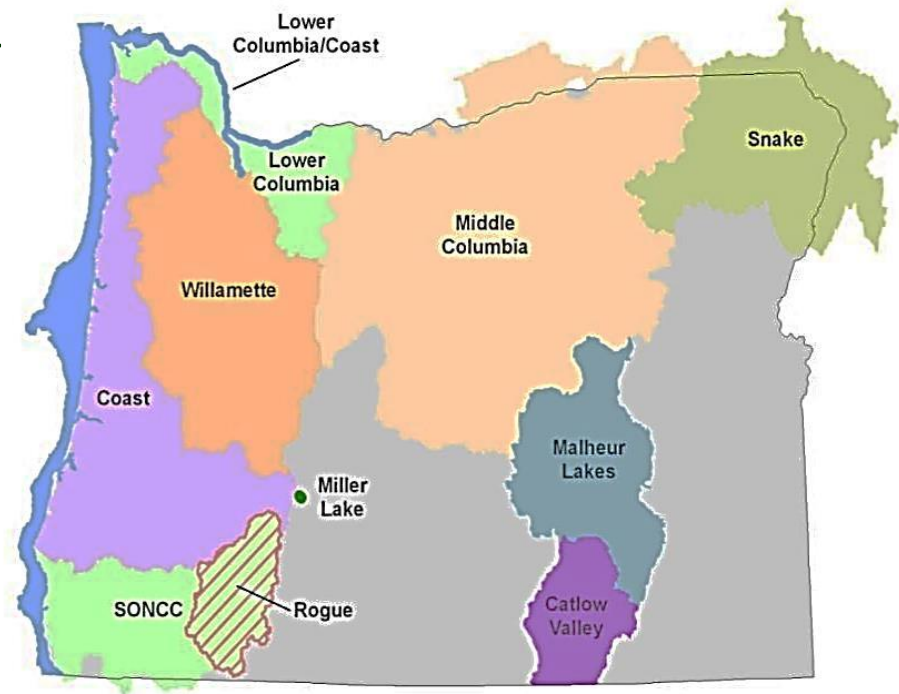
- Conservation plan implementation
 - Willamette BiOp
- Water and hydro issues
- Energy development
 - In-conduit hydro, wave energy
- Promote, enhance, restore, and create fishing opportunities



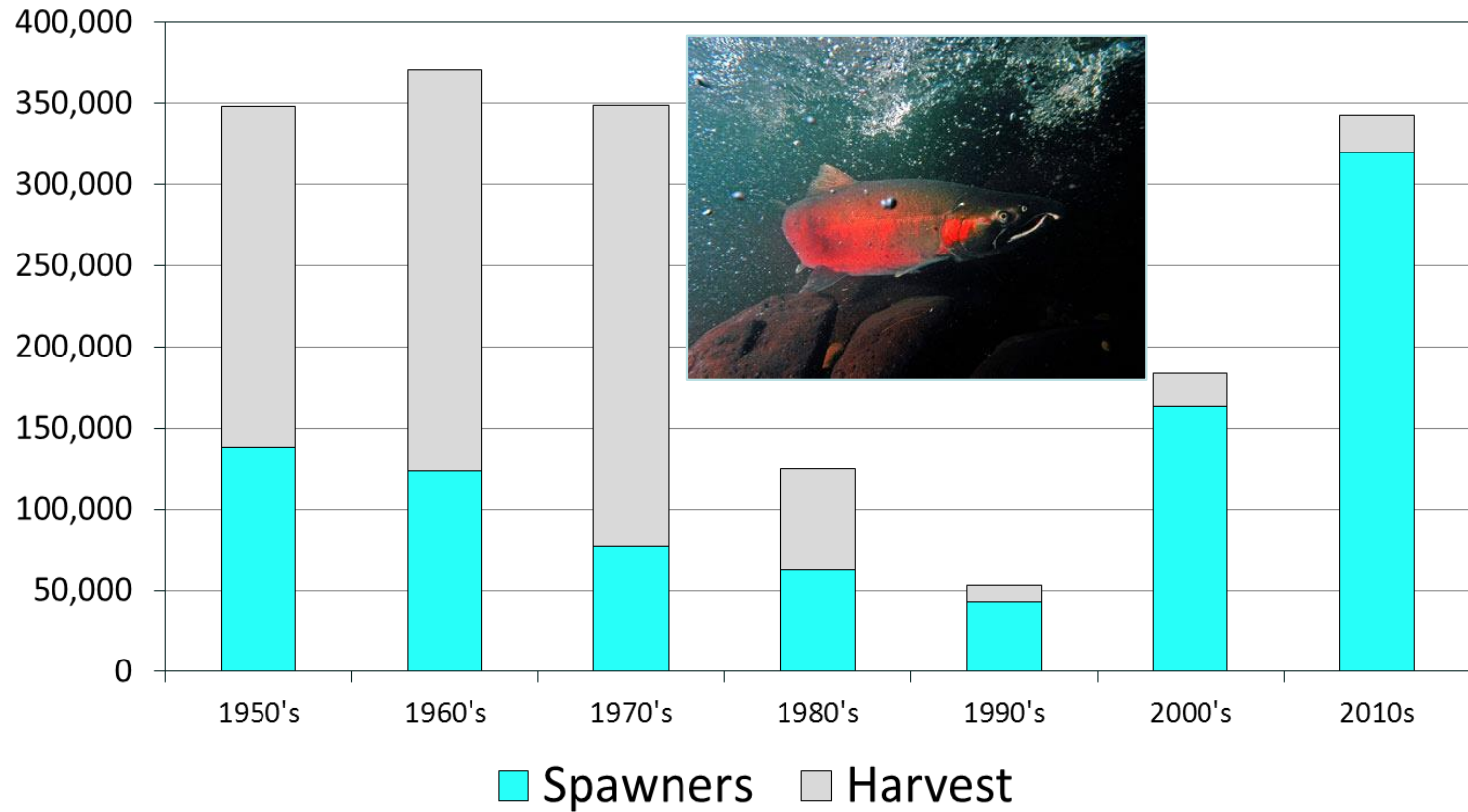
Conservation & Recovery Plans

Completed or in progress

- Plans for 20 of 22 salmon & steelhead completed by end of 2013
- Shifting from planning to implementation
-- Focus on priority actions
- Align harvest/hatchery management with conservation

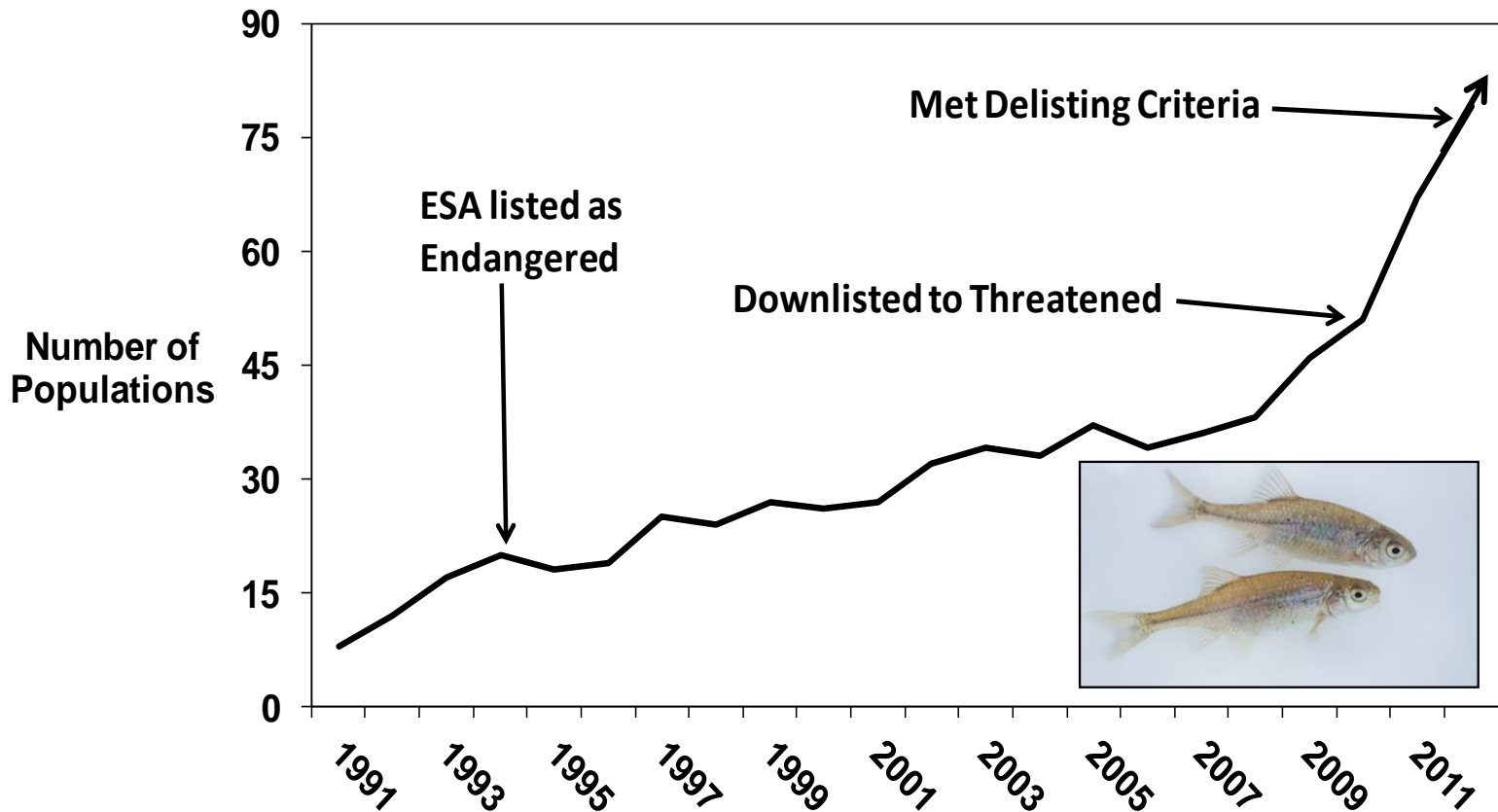


Oregon Coast Wild Coho Adults



Oregon Chub Recovery

A minnow native to the Willamette



Likely to be the first fish to be delisted!

Fish Screens & Passage

- Collaborative program
 - 1,350 projects since 2000
 - Cost share programs
- 2013 Fish Passage Priority list
 - 2650 out of 30k
- New technologies
- ESA protection to water users
- Funding challenges



*Related to KPM #6
Unscreened Water Diversions*

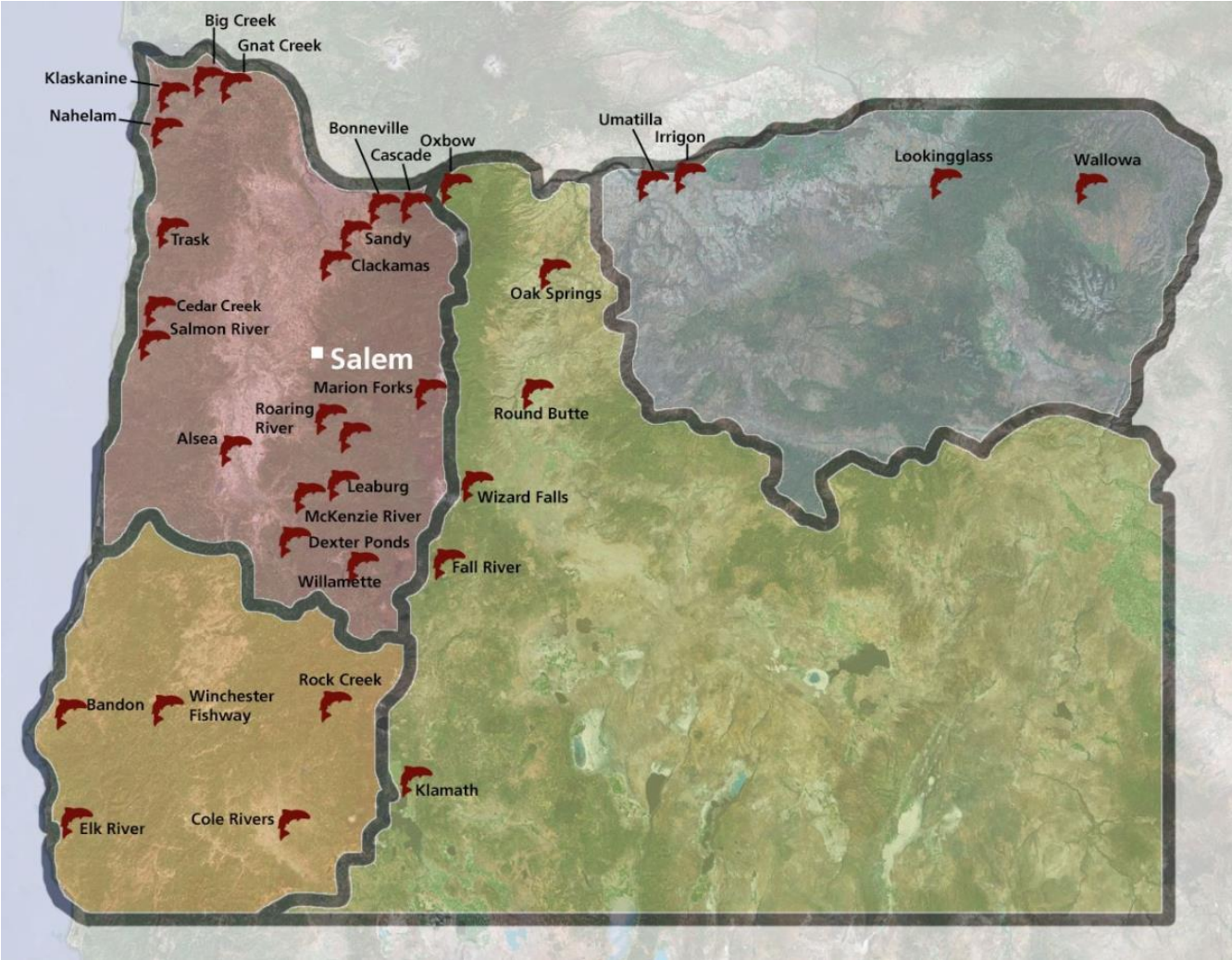
Hatchery Management

Program Purpose

- Fishery and/or conservation benefits
- Good residents in their watersheds
- Good neighbors to wild fish
 - OHRC



Fish Hatcheries



Hatchery Programs

- **32 hatcheries** (18 mitigation)
 - 12 federal fund
 - 8 state fund
 - 12 mixed fund
- **45 Million annual release**
 - 39 Mil salmon-steelhead
 - 5 Mil rainbow trout
 - <1 Mil other (e.g., kokanee)
- **36 Million fish marked**



Big Creek Hatchery



Hatchery Management

High Return on Investment

- 650,000 people purchase fishing licenses annually
- More than 8 million days fishing
- Angling opportunities 365 days/year
- \$1 spent generates \$15 in economic benefit
 - Only 25¢ of every dollar spent is state funds



Free Fishing Weekend at Wizard Falls Hatchery



Salmon fishing on the Columbia River

Hatchery Management

Oregon's Culture

- 1.4 million tourist visits/year
- More than 3,800 youth and 2,500 adults donated 91,000 hours at STEP hatcheries
- \$2 million worth of volunteer time




Kids help at the Morgan Creek STEP facility

Recreational Fisheries

- Juvenile Licenses & Sports Pac
- Recruitment and Retention
 - Where and how to fish
 - Marketing
 - Focus on families and youth
- Private trout purchases
- Restoration of Mann Lake, Walton Lake and Antelope Flat Reservoir
- Fishing access


*Related to KPM #2
Angling License Purchases*



**50 PLACES
TO GO FISHING WITHIN
60 MINUTES
OF PORTLAND**

LET'S GO FISHING ON SATURDAY. Not enough time to go fishing? Think again—if you live in the greater Portland area, there are a number of places you can get to in less than an hour. Make sure you read the Oregon Sport Fishing Regulations before you go. Mileage and generalized directions are from Roseburg Courthouse. •

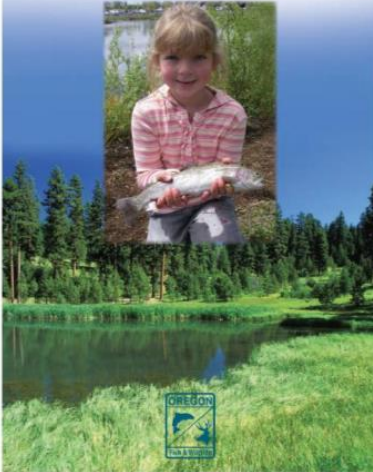

1. BARKTON PARK
Salmon, steelhead
Clackamas River
Weekend day use
12, off I-205. Exit
right onto Hwy 3
County park.
2. BENSON LAKE
30 mi., 34 min.
Trout, largemouth bass



**50 PLACES
TO GO FISHING WITHIN
60 MINUTES
OF ROSEBURG**

LET'S GO FISHING ON SATURDAY. Not enough time to go fishing? Think again—if you live in the Roseburg area, there are a number of places you can get to in less than an hour. Make sure you read the Oregon Sport Fishing Regulations before you go. Mileage and generalized directions are from Roseburg Courthouse. •

*Easy Angling
in
Central Oregon*

are primarily catch and release, camping and
is adjacent to Wheeler Creek Wilderness area.
FISHING DAMASCUS LAKE SHED, go approximately
Flat Campground on left. USFS

Elkton—44 mi., 52 min.
of, chard, bass

the bank fishing in lower mainstem Umpqua.
6. Take exit 138, off I-5, Elkton/Jordanville.
W/W Central Ave/Elkton/Jordanville Hwy, go 24
miles. Left onto OR-38 W/Umpqua Hwy,
go about 8 miles, destination on left. DFC

7. CALAPOOYA CREEK (Steamboat
Park), Oakland—16 mi., 22 min.
Trout

Access to Calapooya Creek. Park
has restrooms and picnic tables. Park
closed to winter. Take exit 111, off I-5,
towards Oakland. Merge onto Steamboat
La, go about 1 mile. Slight left to stay
on Steamboat La, left onto Goodness Ave.

8. "CAMP WATER" AT MOTT
BRIDGE, Steamboat (fly
fishing only)—39 mi., 46 min.
Steelhead, trout

Recreational Fisheries

Fishing Locations

ODFW trout stocking sites
ODFW's NW Region hatchery trout release locations
Public · 38 Collaborators · 213,106 views
Created on Sep 6, 2011 · By rick.swart · Updated Apr 25
★★★★★ 1 ratings · 1 comments · KML

- Alton Baker Pond & Canoe Canal**
Alton Baker Pond and Canoe Canal are located within Alton Park, one of the most popular and multi functional parks in Et. The park is located on the north bank of the Willamette River
- Battle Lake**
A 2-acre easy hike-in lake in the Siuslaw National Forest. Fish species: rainbow trout ODFW Recreation Report Trout Stocking Schedule Fishing Regulations
- Benson Lake**
This is a 40-acre lake located in Benson State Park in the Co River Gorge. From Portland, head east on I-84, park is located the south side of the freeway approx. 1/2 mile west of Multnomah Falls
- Bethany Pond**
This is a 10-acre pond located at Bethany west of Portland. The pond is maintained by Tualatin Hills Park and Rec. Amenities include picnic tables, restrooms, and a paved accessible trail. Fish species: rainbow trout ODFW Recreation Report Trout Stocking Schedule Fishing Regulations
- Big Cliff Reservoir**
From Salem, take Hwy. 22 east 41.5 miles, take paved road on south side of the highway, go 200 yards to gravel parking lot. fishing, primitive boat launch, large gravel parking lot. Fish species: rainbow trout, bass, bullhead ODFW Recreation Report Trout Stocking Schedule Fishing Regulations
- Big Creek Reservoir #1**
This is a 20-acre reservoir on Big Creek Road northeast of Multnomah Falls offering year-round fishing. Fish species: rainbow trout, bass, bullhead ODFW Recreation Report Trout Stocking Schedule Fishing Regulations
- Big Creek Reservoir #2**
The larger of the two reservoirs on Big Creek Road northeast of Multnomah Falls offering year-round fishing. Fish species: rainbow trout, bass, bullhead ODFW Recreation Report Trout Stocking Schedule Fishing Regulations

Restoration & Enhancement Program

- Funded with recreational fishing & commercial salmon fishery dollars
- \$46 M and thousands of projects since 1989
- 115 projects approved as of December 2012
 - 24 hatchery related (\$1,137,273)
 - 14 fish passage and screening projects (\$580,343)



New raceways at Wizard Falls hatchery



New trailers for angler education outreach

Water Program

- Works with state, federal, local, private and tribal interests to balance the needs of fish and wildlife with water users
 - Instream water rights
 - Hydropower re-licensing
 - Technical assistance
- Columbia River water
- IWRS implementation

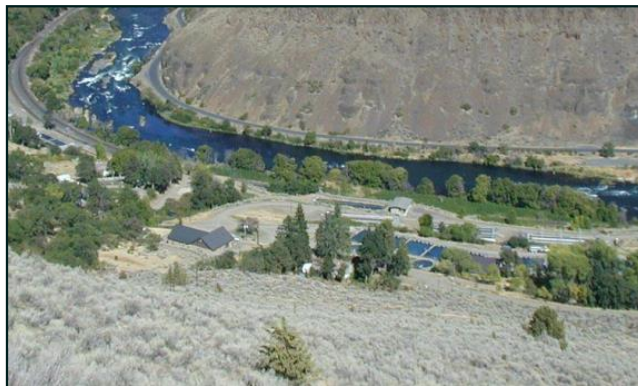


Detroit Lake Dam

Fish Division

Inland Fisheries Policy Option Packages

- Largely Ongoing Programs
 - Fish Hatcheries (POP 101-104)
 - Fish Research & Monitoring (POP 109, 110, 112, 115)
- New Initiatives
 - IWRS Implementation (POP 116)



Marine/Columbia River Fisheries

Program Purpose

Sustainably manage fish and wildlife in Oregon's ocean and Columbia Basin



Marine/Columbia River Fisheries

Policy Issues & Opportunities

- Recovery/Conservation
- Interjurisdictional Fishery Mgmt
- Energy Development
- Pinniped Predation
- By-catch
- Invasive Species
- Climate Change



Marine/Columbia River Fisheries

- Manage a significant portion of the state's fisheries
 - Much of the recreational
 - Essentially all of the commercial
- Fishing is a *major* economic driver in Oregon's economy (to both coastal/rural communities and the entire state)
 - More than \$1.5 B/biennium economic value



Columbia River Salmon Recovery

- Provide technical expertise
- Identify wild fish needs
- Ensure fisheries are compatible w/ESA
- Advocate for habitat and dam improvements



Bonneville Dam

Columbia River Fisheries

- Interjurisdictional
- ESA/MMPA/MBTA
- Sturgeon
- Salmon and steelhead
 - Lower CR mgmt and reform



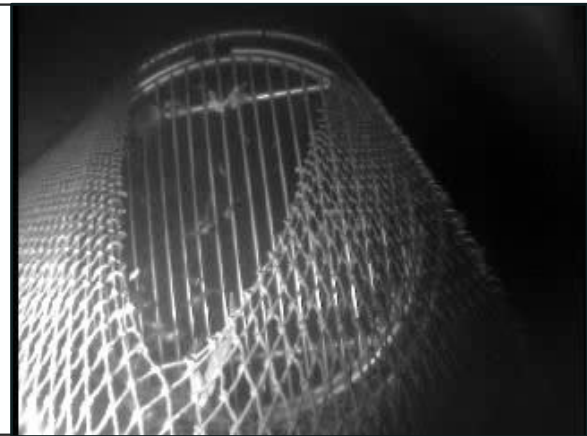
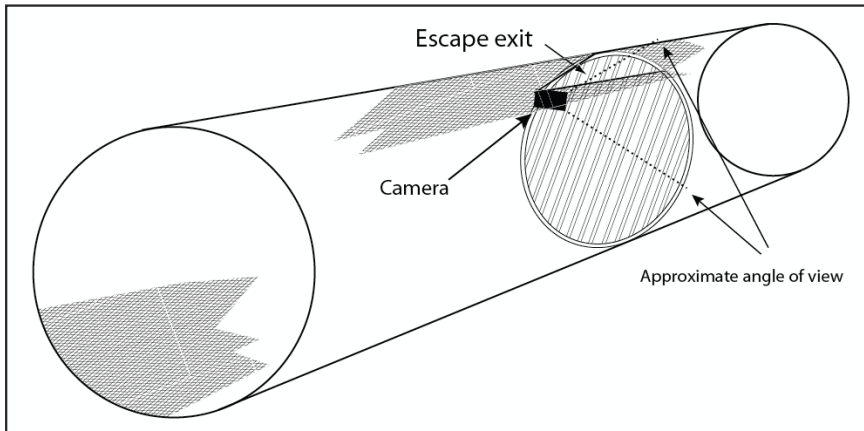
Marine Fisheries

Complex, Science-based and Collaborative

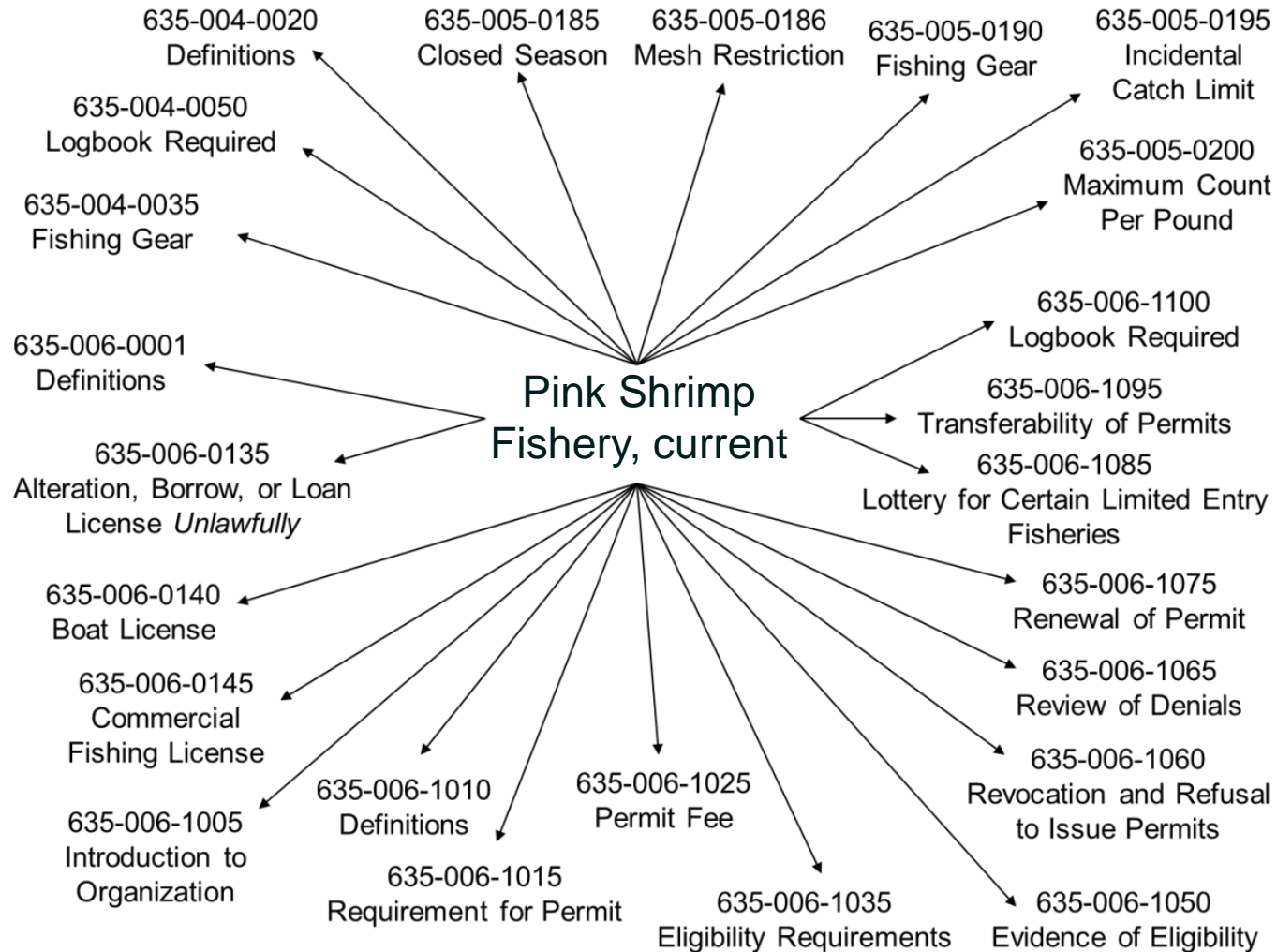


Sustainable Shrimp

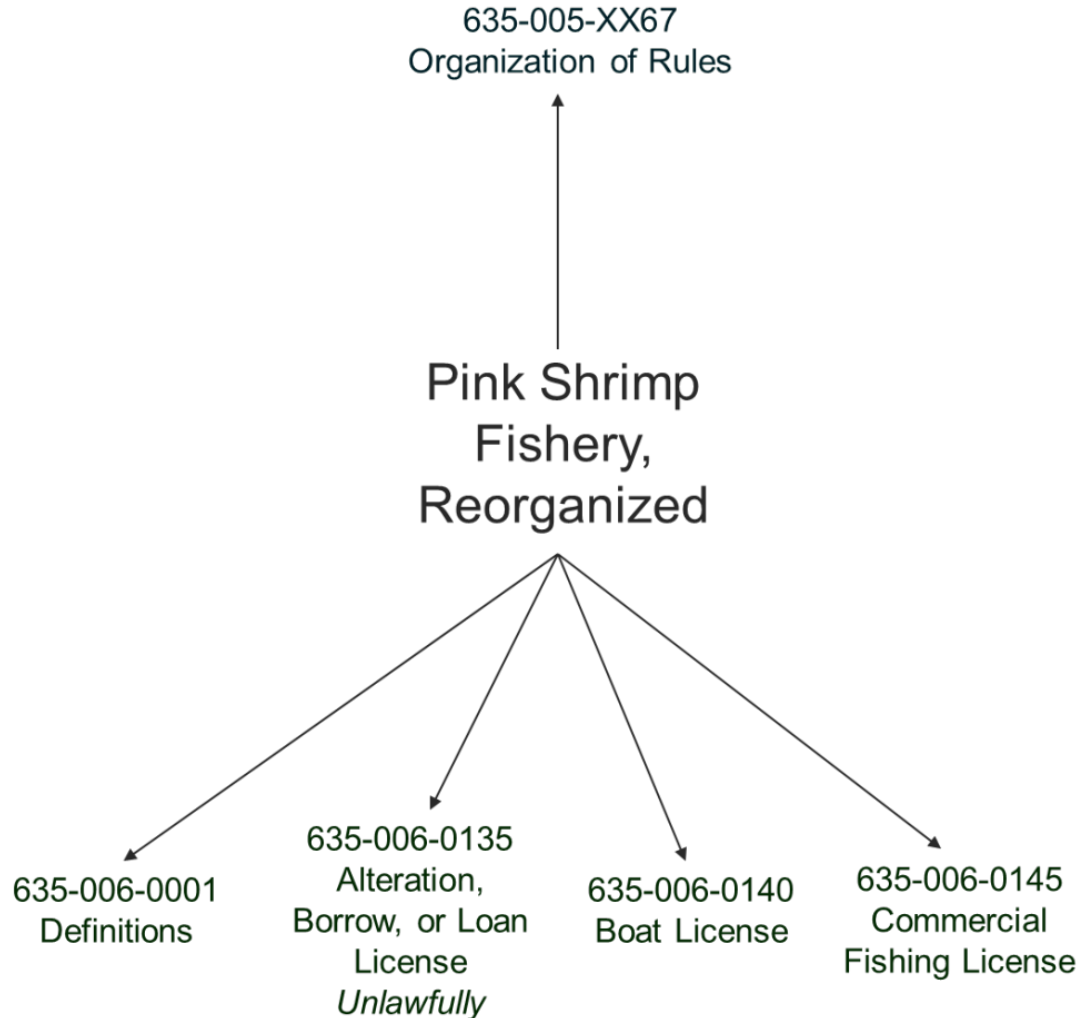
- Industry collaboration
- MSC certification 2008
- Bycatch reduction devices



Innovation & Customer Service



Managing More Effectively



Marine Reserves

- Decade in the making
- Governor and Legislature support
- Broad stakeholder support
- Bottom-up collaboration
- Research-based protection of ecologically rich areas



Cape Falcon



Cascade Head



Otter Rock



Cape Perpetua



Redfish Rocks

Marine Reserves



Fish Division

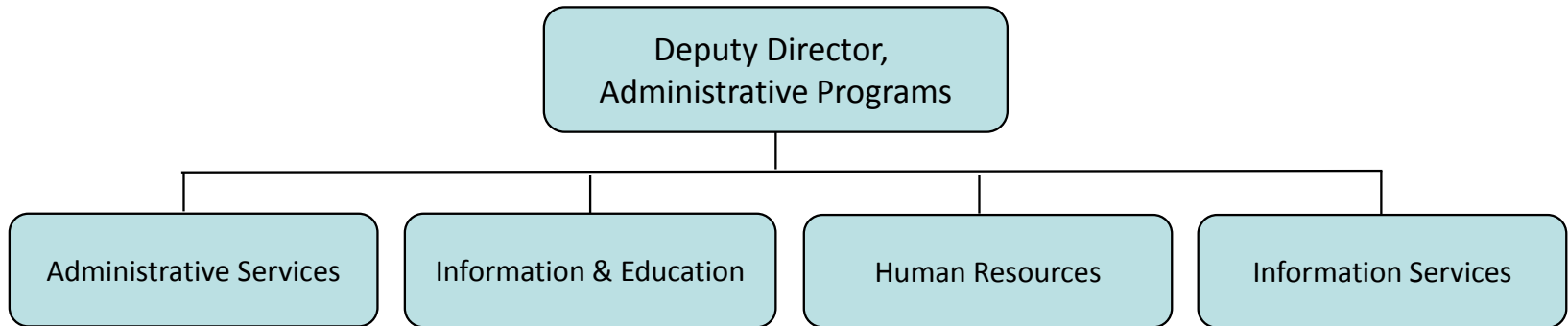
Marine/Col. River Policy Option Packages

- On-going Programs
 - Marine Reserves (POP 121, \$1.7 M, GF/LF)
- New Initiatives
 - Lower Columbia River Fisheries Reform (POP 125, \$3.9 M, GF/LF/OF; POP 114, \$2 M, FF)



Administration

- Support for fish & wildlife programs
- Provide licensing, education & information programs



**13-15 GBB:
\$44.5 M
127.6 FTE**



Administrative Services

Program Purpose

- Sport and commercial licensing
 - Support more than 500 POS vendors
 - In 2012, 986,000 sport licenses sold
- Accounting & contract services
 - 800 grants & contracts annually
 - \$100M in billings in FY11; 5000 invoices
- Accounts payable & payroll services
 - Average 2,000 payments to vendors monthly



License Staff Assist Customers at the 2013 Pacific Northwest Sportsmen's Show

Human Resources

Program Purpose

- Recruitment
- Safety
- Workforce enhancement & diversity
- Employee relations



ODFW's Labor Management Committee



ODFW display at Statewide Diversity Conference

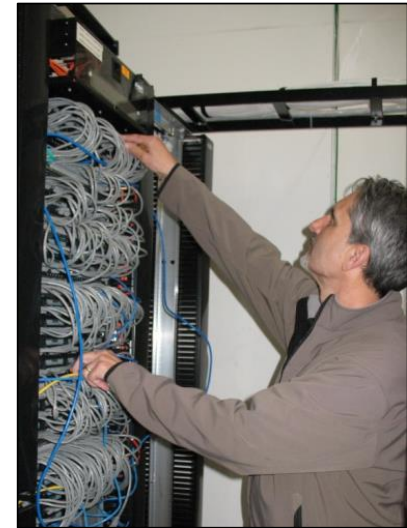
Human Resources



Information Services

Program Purpose

- Maintain network security & connectivity across agency
- Develop applications & databases to support programs
 - 1.3 million lines of legacy code converted to modern platforms
- Help desk services
 - Network, desktop, application, & small devices
 - 350+ service requests/month
- POS contractor oversight



Maintaining network switches supporting internal connectivity Headquarters building



Point of Sale system testing

Information and Education

Program Purpose

- Support agency initiatives
- Encourage hunting, fishing & wildlife viewing
 - Marketing & promotions
 - Online resources/website
 - Events & outreach
- Education
 - Hunter & angler education
 - Outdoor Skills

*450 events/classes &
21,000 youth reached
in 2012*



Partnering with OSU

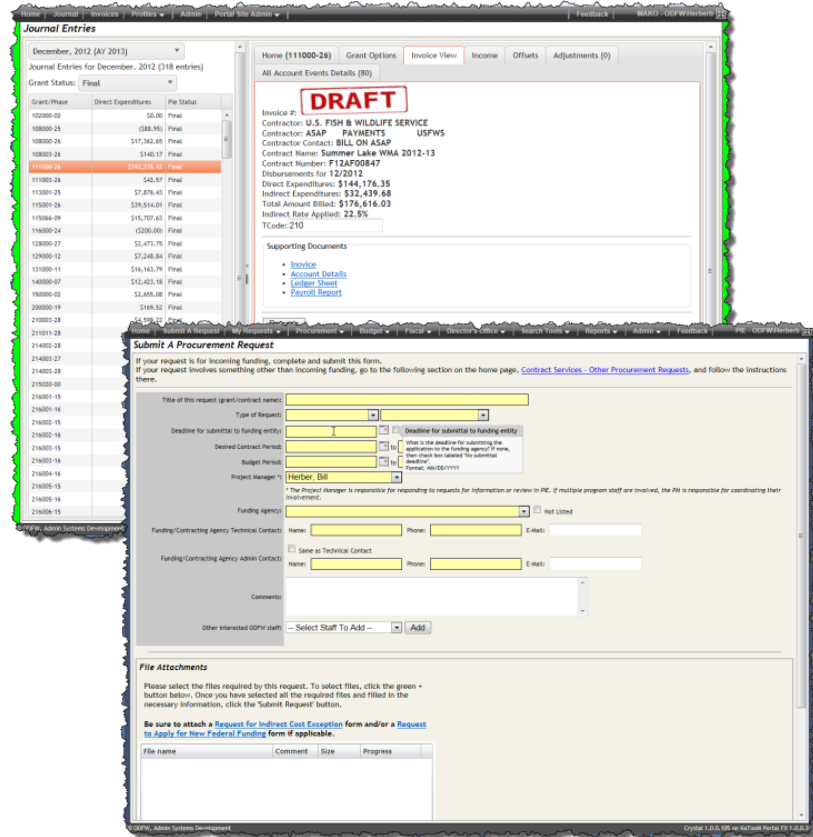


Teaching firearm safety

Administration

Efficiency & Cost Savings Efforts

- Systems to provide greater efficiency and transparency
 - Contracting
 - Billing
 - Asset management
- Conversion from paper to electronic
 - e.g., purchase orders, internal routing, conference room scheduling, property disposal



Administration

Cost Savings/Process Improvement

- Focus on cost savings
 - Cell phones shared minutes
 - Email archiving
 - Hard drive destruction
 - Payroll and mail distribution
 - Automation of user accounts
- Process Improvement
 - Hiring decisions (ODFW)
 - Processing purchase orders (ODFW)
 - Timely payment of vendors (ODFW)
 - Tracking wildlife damage complaints (ODFW underway)
 - Funding for SWCD (Ag)
 - Noxious weeds program (Ag underway)
 - Reorganizing procurement for Fire Protection Services (Forestry)



ODFW Lean event focused on hiring process



Administration

Policy Option Package

POP 124

- Continues Lean Position (LD)
 - Shared under IGA with ODA, ODF
 - Linked to shared internal auditor position housed at ODF
- Continues Human Resource Analyst (LD)
 - In conjunction with increased FF in Fish Division
 - Supports high workload associated with seasonal workforce

ODFW Mission & Programs

- Importance to Oregon's citizens
- Contribution to the State's economy
- Good return on investment

