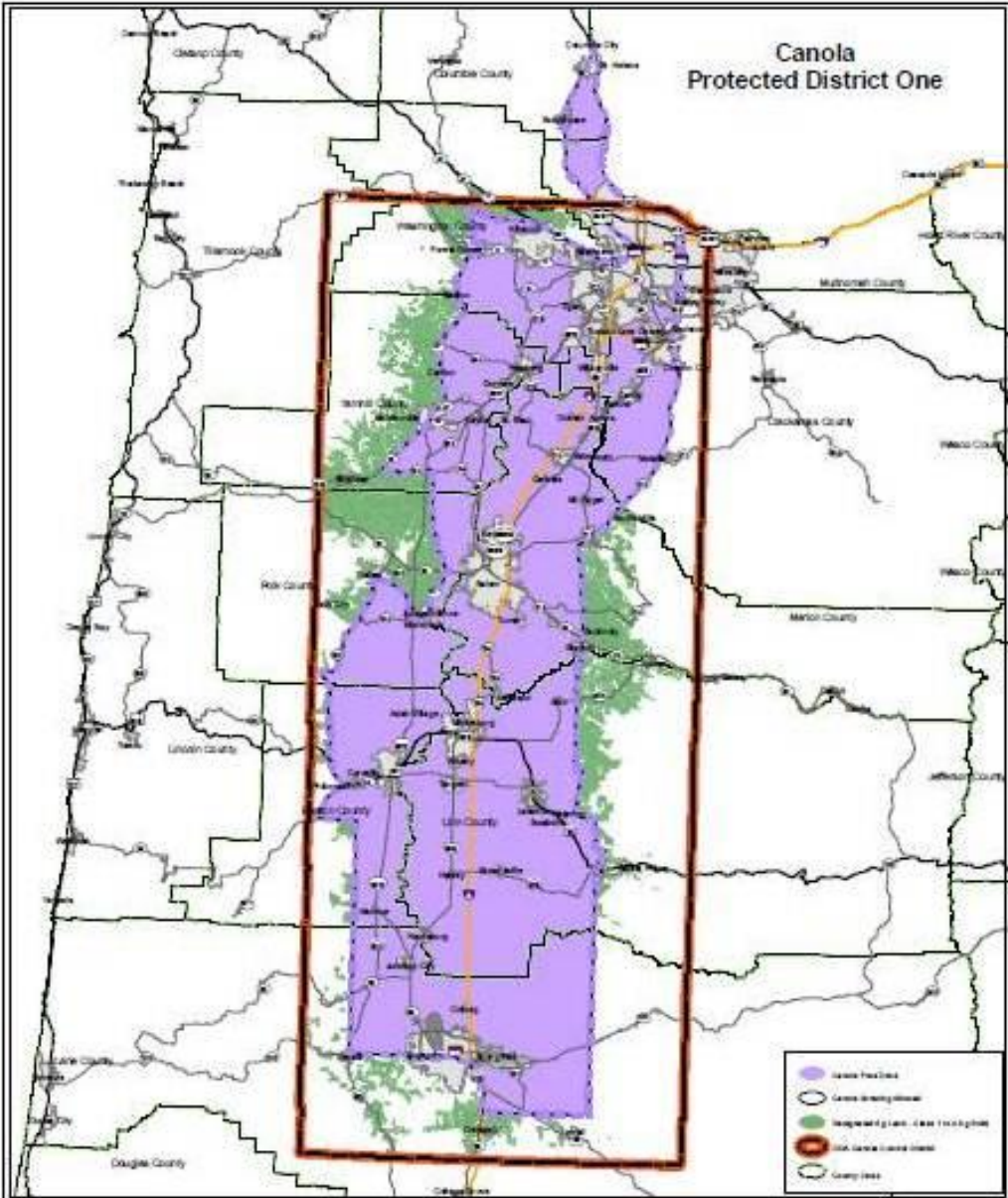


Canola Protected District One



This is a preliminary map and does not represent the final boundaries of the district. The boundaries are subject to change.

Map prepared by the Oregon Department of Agriculture, Canola Working Group. The map is for informational purposes only and does not constitute a contract. The Oregon Department of Agriculture is not responsible for any errors or omissions on this map. The Oregon Department of Agriculture is not responsible for any damages or losses resulting from the use of this map. The Oregon Department of Agriculture is not responsible for any legal actions taken against it.





Rapeseed



Turnip



Radish



	Rapeseed	Turnip	Radish
Pests	same	same	same
Diseases	same	same	same
Weedy Volunteers	2-3 yrs	5-10 yrs	10-50 yrs
Annual Acreage	Actual :: 100-300 Proposed :: 2,500	Actual :: ~4,000	Actual :: >10,000
Cross-pollinate with Brassicas	Yes	Yes	No
ODA Oversight	Heavily regulated	Unregulated	Unregulated
Marketing	Commodity	Usually contract	Contract
GMO varieties	Yes	No	No

Canola is the best rotation crop for grass seed and wheat growers. Why?

- No irrigation required
- Deep tap root breaks soil, mines nutrients
- Easy to control grassy weeds in broadleaf crop
- 10% to 20% yield increase for grass or grain following canola
- Identical planting and harvesting equipment for grass seed or wheat
- Excellent yields: > 3,500 lbs/A average
- Good pricing: \$0.25/lb to \$0.27/lb = > \$875/A
- Commodity crop: paid in 30 days, no contract required
- Multiple buyers for crop
- No hard seed

Isolation, rotation and good management are the safeguards for all seed purity

- No rapeseed production allowed in Rapeseed Exclusion Zone
- So isolation distances are as great or greater than specialty seed association requires
- Contract with ODA required
- Location of all rapeseed fields is public information
- Disease-free seed required
- Two year in five rotation; cannot plant back-to-back
- Growers control volunteers within $\frac{1}{4}$ mile of fields
- Only 2,500 acres of rapeseed production per year