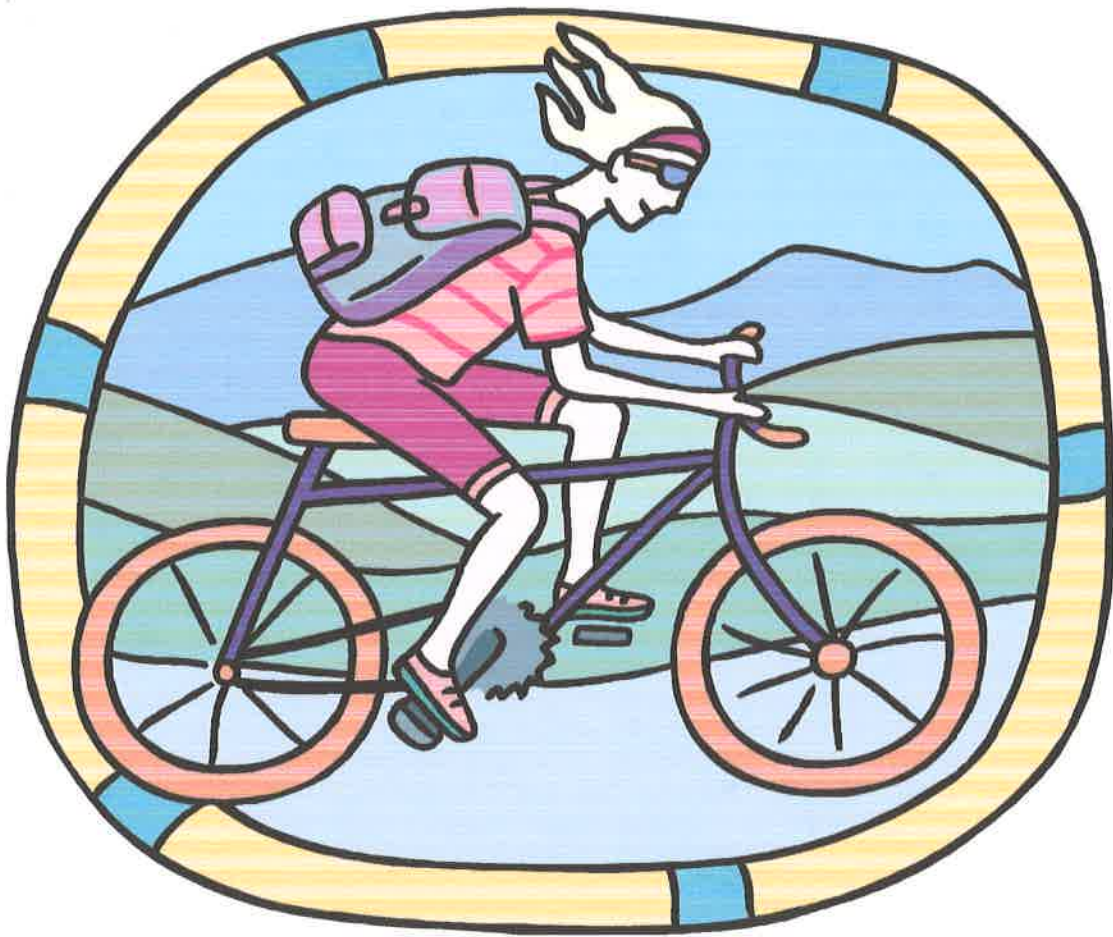


**SO. COOPER MTN. CITIZENS  
FOR  
SENSIBLE  
SCHOOL BOUNDARIES**



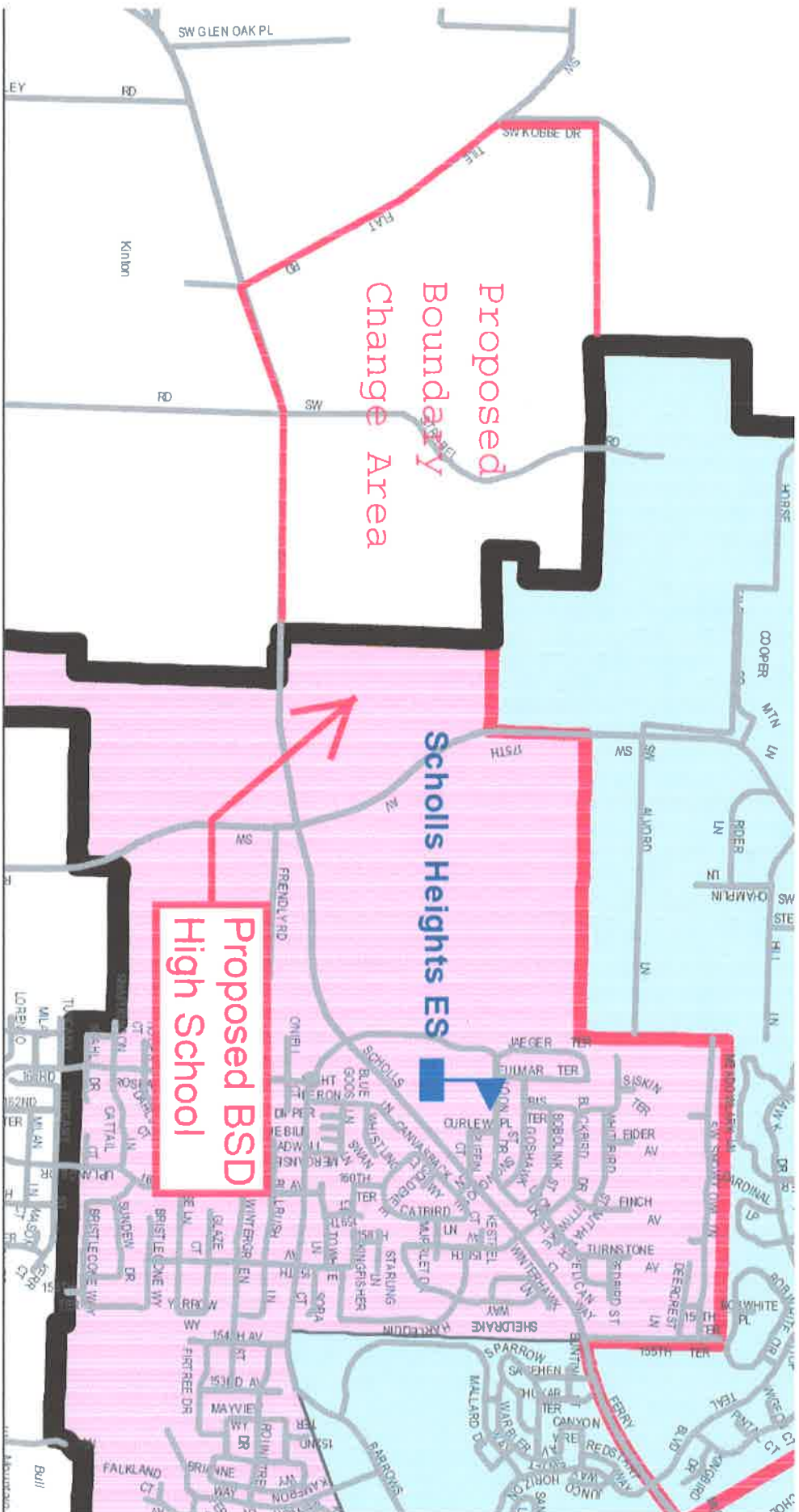
# Our Goals

- Safety for our kids
- Livable Community
  - Walkable
  - Bikeable
- Community Schools

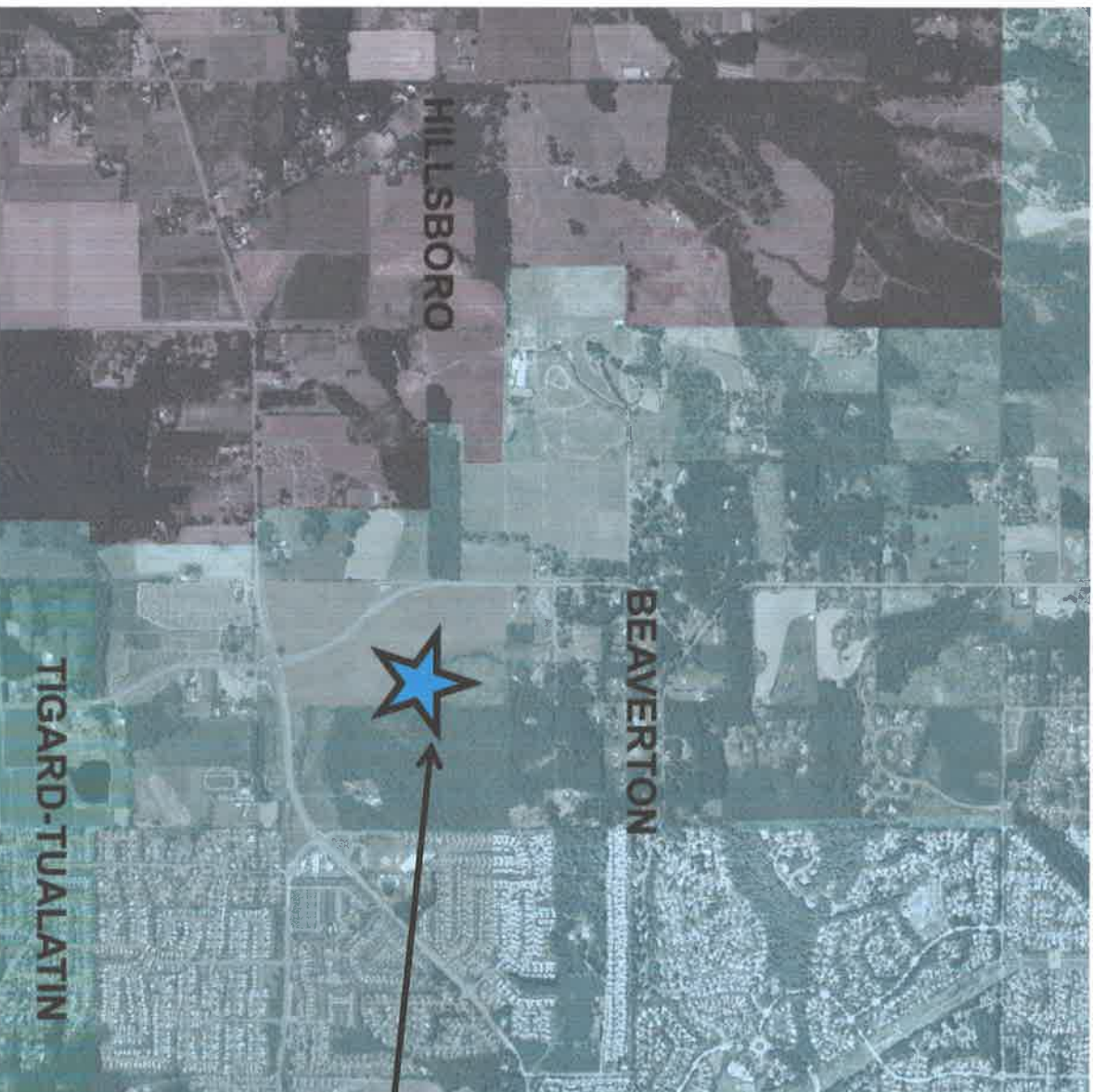
# **A New Community**

- **241 acres**
- **Within the City of Beaverton**
- **4651 housing units expected**
- **Extensive, comprehensive  
planning**

# EXHIBIT A



# A new Community A new High School



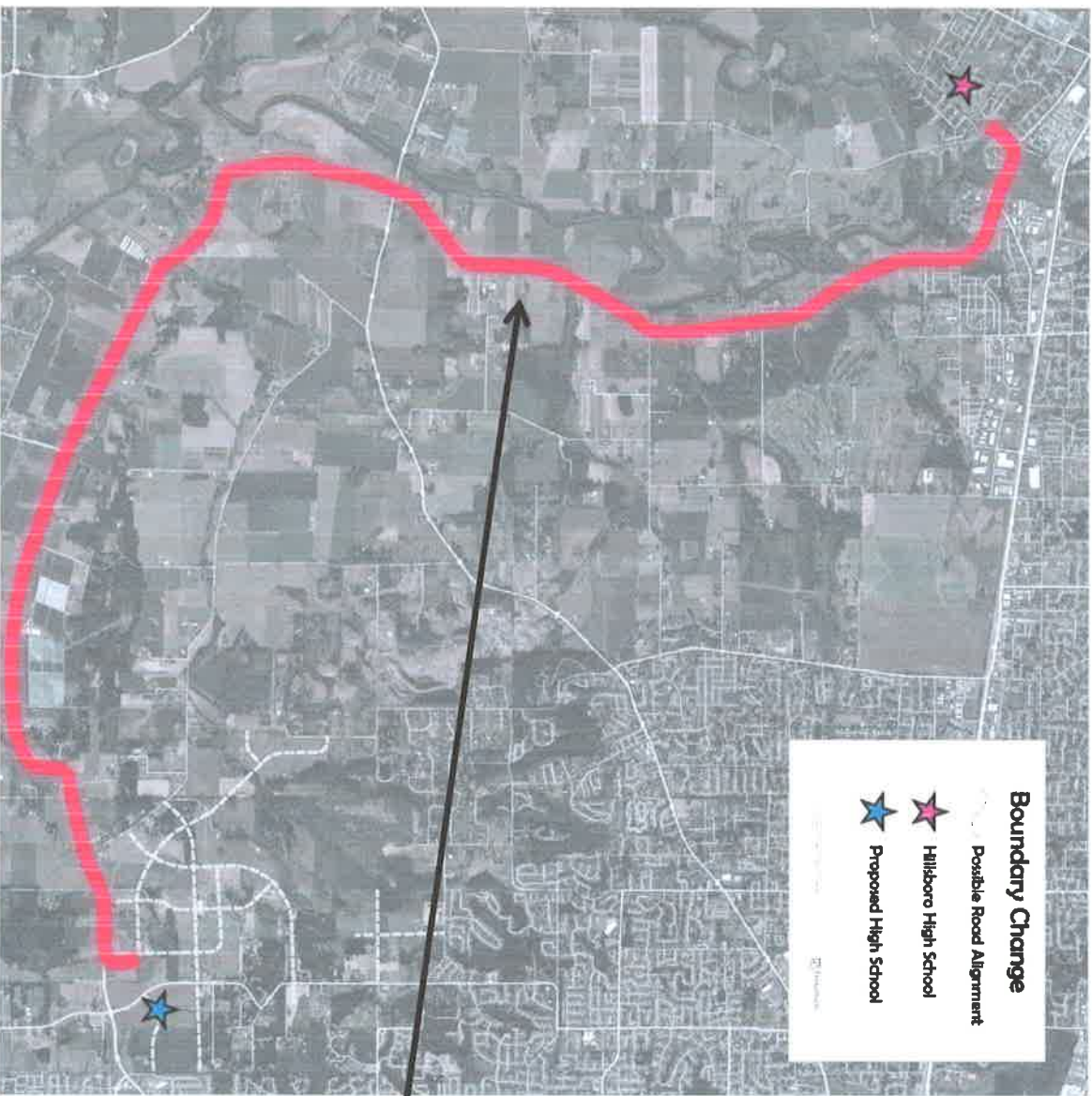
New High School

# Request to be in Beaverton School District

- All Landowners in favor
- Difference in Distance to Schools

	Hillsboro School District	Beaverton School District
Elementary	3 miles	.5 miles
Middle	9 miles	3.7 miles
High	10 miles	0 miles

# A new Community A new High School



Driving by car to  
Hillisboro High School  
takes approximately  
20 minute.

600 NE Grand Ave.  
Portland, OR 97232-2736  
503-797-1540  
503-797-1804 TDD  
503-797-1793 fax

[www.oregonmetro.gov](http://www.oregonmetro.gov)



**Metro** | *Making a great place*

METRO COUNCIL PRESIDENT TOM HUGHES

November 27, 2012

Mike Scott, Superintendent  
Hillsboro School District  
3083 NE 49th Place  
Hillsboro, OR 97124

Janeen Sollman, Chair  
Hillsboro School District Board of Directors  
3083 NE 49th Place  
Hillsboro, OR 97124

Dear Mr. Scott and Ms. Sollman:

In 2011, Metro added the area west of Beaverton, in the vicinity of Southwest 175th Avenue and Scholls Ferry Road, to the urban growth boundary. This area, to be served by the City of Beaverton, will develop into over 4500 homes for families needing access to jobs, schools and housing. As this community comes together, it will be looking at ways to meet their everyday needs without long commutes.

While the majority of this area is served by the nearby Beaverton School District, a portion is included in the Hillsboro School District. If this remains the case, the community that develops in this area will have to send their children to distant schools rather than those close by. In these tough economic times, we need to make it more affordable for families to get their children to school. Providing opportunities for our young people to walk or bike to school not only saves families money, but improves health and fitness and limits our impact on the environment. Furthermore, it saves our school districts money on ever-increasing transportation costs.

With the Beaverton School District right on its doorstep, and with its plans to develop a new high school immediately nearby, this is a perfect opportunity to support our community goals and help families and school districts. I urge you to consider the South Cooper Mountain Land Owners' request to transfer this area into the Beaverton School District. It makes sense for the community and for our schools.

Sincerely,

A handwritten signature in cursive script that reads "Tom Hughes".

Tom Hughes  
Metro Council President



600 NE Grand Ave.  
Portland, OR 97232-2736  
503-797-1540  
503-797-1804 TDD  
503-797-1793 fax

[www.oregonmetro.gov](http://www.oregonmetro.gov)



COUNCILOR CARL HOSTICKA, DISTRICT 3

December 21, 2012

Mike Scott, Superintendent  
Hillsboro School District  
3083 NW 49<sup>th</sup> Place  
Hillsboro, OR 97124

Janeen Sollman, Chair  
Hillsboro School District Board of Directors  
4083 NE 49<sup>th</sup> Place  
Hillsboro, OR 97124

Dear Mr. Scott and Ms. Sollman:

As a Metro Councilor, I was active in bringing the South Cooper Mountain area into our Urban Reserves and into the Metro UGB. I have long been a strong advocate for progressive land use practices and was particularly impressed by the soundness of the landowners' plans for developing this area in accordance with City of Beaverton and Metro goals.

One problem persists, however, and that is the outdated school boundary that places part of this area in the Hillsboro School District. Allowing the area to become part of the Beaverton School District would quickly solve this problem.

I know you are both aware of Metro's interest in supporting vibrant communities where people live, work, and play in places where their everyday needs are easily accessible. Providing opportunities for students to bike and walk to school saves families money while also benefiting health and fitness and limiting our impact on the environment. Furthermore, offering opportunities for students to bike and walk will save our school districts money on ever-increasing transportation costs. If children who live in the South Cooper Mountain area were part of the Beaverton School District, they would realize these benefits.

With all of this in mind, I urge you to reconsider your recent decision to prevent students in this area from attending schools in the Beaverton School District.

Sincerely,

Carl Hosticka  
Metro Councilor



Dear Hillsboro School District Board of Directors:

I would like to offer my support for the boundary change requested by the South Cooper Mountain Land Owners to include all of the area of the South Cooper Mountain community in a single school district. Clearly, it is more desirable to have the children of what will be a tight knit community all attend the same school, for social reasons. But in addition, with the new Beaverton High School being built in the middle of this community, it will allow most children to walk and bike to school, reaping considerable benefits in reduced auto usage, as well as benefiting the children by improving their ability to exercise, with all the attendant health benefits.

As these school district boundaries were drawn many years ago without consideration for the new communities being formed, I would hope that the common sense solution of including all the students in a single community within a common school district will be followed.

Thanks you for your consideration,

A handwritten signature in cursive script that reads 'John Fregonese'.

John Fregonese  
President  
Fregonese Associates