



OREGON DEPARTMENT

OF VETERANS' AFFAIRS

02/26/13

PRESENTATION TO JOINT COMMITTEE ON WAYS AND MEANS
Transportation & Economic Development Subcommittee

2013-15 COUNTY VSO PROGRAM DISTRIBUTION



APPROXIMATE MONIES TO BE DISTRIBUTED TO THE COUNTIES 2013-15 FOR THE COUNTY VETERAN SERVICE OFFICER (CVSO) PROGRAM IN THE 2013-15 BIENNIUM

County	(A)	(B)	(C)	(D)	(C+D)	(E)	(C+D+E)	((C+D+E)*2)	
	VetPop 2011 Adj 2000 Cen Figures On Oregon Vet Pop (9/30/13)	Calculated County % of Total OR Vet Population	CVSO Expansion Monies Annual Base \$ Amounts	Annual Vet Pop. \$ Amounts	Total Annual Expansion Distribution	Annual Base Distribution	Total Combined Annual Distribution	Total Combined Biennial Distribution	
BAKER	1,936	0.6647%	13,249	6,534	19,783	4,945.70	10,441	30,224	60,447
BENTON	5,694	1.9546%	13,249	19,212	32,461	8,115.13	10,441	42,901	85,803
CLACKAMAS	34,848	11.9625%	13,249	117,580	130,829	32,707.32	10,441	141,270	282,540
CLATSOP	4,125	1.4161%	13,249	13,919	27,168	6,792.04	10,441	37,609	75,218
COLUMBIA	5,874	2.0165%	13,249	19,820	33,069	8,267.22	10,441	43,510	87,020
COOS	8,018	2.7526%	13,249	27,055	40,304	10,076.03	10,441	50,745	101,490
CROOK	2,458	0.8439%	13,249	8,294	21,543	5,385.86	10,441	31,984	63,969
CURRY	2,955	1.0145%	13,249	9,971	23,220	5,805.10	10,441	33,661	67,323
DESCHUTES	14,739	5.0598%	13,249	49,733	62,982	15,745.42	10,441	73,423	146,846
DOUGLAS	13,004	4.4639%	13,249	43,876	57,125	14,281.14	10,441	67,566	135,131
GILLIAM	244	0.0838%	13,249	824	14,073	3,518.26	10,441	24,514	49,028
GRANT	743	0.2550%	13,249	2,506	15,755	3,938.85	10,441	26,196	52,393
HARNEY	942	0.3232%	13,249	3,177	16,426	4,106.45	10,441	26,867	53,733
HOOD RIVER	1,665	0.5715%	13,249	5,617	18,866	4,716.49	10,441	29,307	58,614
JACKSON	20,551	7.0546%	13,249	69,341	82,590	20,647.43	10,441	93,031	186,061
JEFFERSON	2,077	0.7131%	13,249	7,009	20,258	5,064.43	10,441	30,699	61,397
JOSEPHINE	9,512	3.2654%	13,249	32,096	45,345	11,336.21	10,441	55,786	111,571
KLAMATH	6,908	2.3715%	13,249	23,309	36,558	9,139.59	10,441	46,999	93,998
LAKE	916	0.3145%	13,249	3,091	16,340	4,085.07	10,441	26,781	53,562
LANE	30,208	10.3696%	13,249	101,924	115,173	28,793.16	10,441	125,614	251,227
LINCOLN	5,136	1.7632%	13,249	17,331	30,580	7,645.00	10,441	41,021	82,042
LINN	11,757	4.0361%	13,249	39,671	52,920	13,229.92	10,441	63,361	126,721
MALHEUR	2,404	0.8252%	13,249	8,111	21,360	5,339.94	10,441	31,801	63,601
MARION		0.0000%	0	0	0	0.00	0	0	0
MORROW	1,019	0.3499%	13,249	3,440	16,689	4,172.16	10,441	27,130	54,259
MULTNOMAH	43,528	14.9424%	13,249	146,870	160,119	40,029.64	10,441	170,559	341,119
POLK		0.0000%	0	0	0	0.00	0	0	0
SHERMAN	282	0.0966%	13,249	950	14,199	3,549.73	10,441	24,640	49,280
TILLAMOOK	2,515	0.8633%	13,249	8,486	21,735	5,433.64	10,441	32,175	64,351
UMATILLA	5,932	2.0362%	13,249	20,014	33,263	8,315.69	10,441	43,704	87,407
UNION	2,446	0.8396%	13,249	8,253	21,502	5,375.41	10,441	31,943	63,886
WALLOWA	869	0.2984%	13,249	2,933	16,182	4,045.55	10,441	26,623	53,246
WASCO	3,170	1.0882%	13,249	10,696	23,945	5,986.36	10,441	34,386	68,773
WASHINGTON	35,265	12.1057%	13,249	118,988	132,237	33,059.33	10,441	142,678	285,356
WHEELER	239	0.0819%	13,249	805	14,054	3,513.52	10,441	24,495	48,990
YAMHILL	9,328	3.2021%	13,249	31,474	44,723	11,180.70	10,441	55,164	110,327
Grand Total	291,309	100.000%	450,466	982,908	1,433,374	354,990	1,788,364	3,576,728	

Key Distribution Formula Assumptions:

1. Marion and Polk counties do not receive any funds for CVSOs under any of the distribution formulas.
3. No \$'s retained upfront by ODVA from CVSO expansion monies for CVSO training related expense s:

2013-2014 Proposed AID TO COUNTIES



The funding formula for VSOs works like this. Each county gets a BASE amount of \$10,400 a year. Then there is Expansion and Enhancement money (SB 1000, 2005). This money is divided by county the following way: Each county receives \$13,249 a year. The remaining money allocated to the counties is then divided based upon the percentage of veterans in each county. The veteran population numbers are from the United States Department of Veterans Affairs. Using this model, the larger counties do, indeed, receive the largest share of the funds.

Descrpt: CVSO-Curr Qtr-County name

22205

AOBJ: 6300

COMM: 915-73

		AID TO COUNTIES 13-14																			
		1st QTR				2nd QTR				3rd QTR				4th QTR							
		BASE AMT	DATE PD	SB 1100	DATE PD	TOTAL	BASE AMT	DATE PD	SB 1100	DATE PD	TOTAL	BASE AMT	DATE PD	SB 1100	DATE PD	TOTAL	BASE AMT	DATE PD	SB 1100	DATE PD	TOTAL
1936002284-	BAKER	\$2,610.00		\$4,945.70		\$7,555.70	\$2,610.00		\$4,945.70		\$7,555.70	\$2,610.00		\$4,945.70		\$7,555.70	\$2,610.00		\$4,945.70		\$7,555.70
1936002285-	000 BENTON	\$2,610.00		\$8,115.13		\$10,725.13	\$2,610.00		\$8,115.13		\$10,725.13	\$2,610.00		\$8,115.13		\$10,725.13	\$2,610.00		\$8,115.13		\$10,725.13
1936002286-	000 CLACKAMAS	\$2,610.00		\$32,707.32		\$35,317.32	\$2,610.00		\$32,707.32		\$35,317.32	\$2,610.00		\$32,707.32		\$35,317.32	\$2,610.00		\$32,707.32		\$35,317.32
1936002287-	039 CLATSOP	\$2,610.00		\$6,792.04		\$9,402.04	\$2,610.00		\$6,792.04		\$9,402.04	\$2,610.00		\$6,792.04		\$9,402.04	\$2,610.00		\$6,792.04		\$9,402.04
1936002288-	505 COLUMBIA	\$2,610.00		\$8,267.22		\$10,877.22	\$2,610.00		\$8,267.22		\$10,877.22	\$2,610.00		\$8,267.22		\$10,877.22	\$2,610.00		\$8,267.22		\$10,877.22
1936002289-	051 COOS	\$2,610.00		\$10,076.03		\$12,686.03	\$2,610.00		\$10,076.03		\$12,686.03	\$2,610.00		\$10,076.03		\$12,686.03	\$2,610.00		\$10,076.03		\$12,686.03
1936002290-	000 CROOK	\$2,610.00		\$5,385.86		\$7,995.86	\$2,610.00		\$5,385.86		\$7,995.86	\$2,610.00		\$5,385.86		\$7,995.86	\$2,610.00		\$5,385.86		\$7,995.86
1936002291-	CURRY	\$2,610.00		\$5,805.10		\$8,415.10	\$2,610.00		\$5,805.10		\$8,415.10	\$2,610.00		\$5,805.10		\$8,415.10	\$2,610.00		\$5,805.10		\$8,415.10
1936002292-	052 DESCHUTES	\$2,610.00		\$15,745.42		\$18,355.42	\$2,610.00		\$15,745.42		\$18,355.42	\$2,610.00		\$15,745.42		\$18,355.42	\$2,610.00		\$15,745.42		\$18,355.42
1936002293-	510 DOUGLAS	\$2,610.00		\$14,281.14		\$16,891.14	\$2,610.00		\$14,281.14		\$16,891.14	\$2,610.00		\$14,281.14		\$16,891.14	\$2,610.00		\$14,281.14		\$16,891.14
1936002294-	000 GILLIAM	\$2,610.00		\$3,518.26		\$6,128.26	\$2,610.00		\$3,518.26		\$6,128.26	\$2,610.00		\$3,518.26		\$6,128.26	\$2,610.00		\$3,518.26		\$6,128.26
1936002295-	001 GRANT	\$2,610.00		\$3,938.85		\$6,548.85	\$2,610.00		\$3,938.85		\$6,548.85	\$2,610.00		\$3,938.85		\$6,548.85	\$2,610.00		\$3,938.85		\$6,548.85
1936002296-	001 HARNEY	\$2,610.00		\$4,106.45		\$6,716.45	\$2,610.00		\$4,106.45		\$6,716.45	\$2,610.00		\$4,106.45		\$6,716.45	\$2,610.00		\$4,106.45		\$6,716.45
1936002297-	018 HOOD RIVER	\$2,610.00		\$4,716.49		\$7,326.49	\$2,610.00		\$4,716.49		\$7,326.49	\$2,610.00		\$4,716.49		\$7,326.49	\$2,610.00		\$4,716.49		\$7,326.49
1936002298-	042 JACKSON	\$2,610.00		\$20,647.43		\$23,257.43	\$2,610.00		\$20,647.43		\$23,257.43	\$2,610.00		\$20,647.43		\$23,257.43	\$2,610.00		\$20,647.43		\$23,257.43
1936002299-	001 JEFFERSON	\$2,610.00		\$5,064.43		\$7,674.43	\$2,610.00		\$5,064.43		\$7,674.43	\$2,610.00		\$5,064.43		\$7,674.43	\$2,610.00		\$5,064.43		\$7,674.43
1936002300-	000 JOSEPHINE	\$2,610.00		\$11,336.21		\$13,946.21	\$2,610.00		\$11,336.21		\$13,946.21	\$2,610.00		\$11,336.21		\$13,946.21	\$2,610.00		\$11,336.21		\$13,946.21
1936002301-	048 KLAMATH	\$2,610.00		\$9,139.59		\$11,749.59	\$2,610.00		\$9,139.59		\$11,749.59	\$2,610.00		\$9,139.59		\$11,749.59	\$2,610.00		\$9,139.59		\$11,749.59
1936002302-	LAKE	\$2,610.00		\$4,085.07		\$6,695.07	\$2,610.00		\$4,085.07		\$6,695.07	\$2,610.00		\$4,085.07		\$6,695.07	\$2,610.00		\$4,085.07		\$6,695.07
1936002303-	053 LANE	\$2,610.00		\$28,793.16		\$31,403.16	\$2,610.00		\$28,793.16		\$31,403.16	\$2,610.00		\$28,793.16		\$31,403.16	\$2,610.00		\$28,793.16		\$31,403.16
1936002304-	000 LINCOLN	\$2,610.00		\$7,645.00		\$10,255.00	\$2,610.00		\$7,645.00		\$10,255.00	\$2,610.00		\$7,645.00		\$10,255.00	\$2,610.00		\$7,645.00		\$10,255.00
1936002305-	LINN	\$2,610.00		\$13,229.92		\$15,839.92	\$2,610.00		\$13,229.92		\$15,839.92	\$2,610.00		\$13,229.92		\$15,839.92	\$2,610.00		\$13,229.92		\$15,839.92
1936002306-	000 MALHEUR	\$2,610.00		\$5,339.94		\$7,949.94	\$2,610.00		\$5,339.94		\$7,949.94	\$2,610.00		\$5,339.94		\$7,949.94	\$2,610.00		\$5,339.94		\$7,949.94
1936002308-	026 MORROW	\$2,610.00		\$4,172.16		\$6,782.16	\$2,610.00		\$4,172.16		\$6,782.16	\$2,610.00		\$4,172.16		\$6,782.16	\$2,610.00		\$4,172.16		\$6,782.16
1936002309-	102 MULTNOMAH	\$2,610.00		\$40,029.64		\$42,639.64	\$2,610.00		\$40,029.64		\$42,639.64	\$2,610.00		\$40,029.64		\$42,639.64	\$2,610.00		\$40,029.64		\$42,639.64
1936002311-	SHERMAN	\$2,610.00		\$3,549.73		\$6,159.73	\$2,610.00		\$3,549.73		\$6,159.73	\$2,610.00		\$3,549.73		\$6,159.73	\$2,610.00		\$3,549.73		\$6,159.73
1936002312-	001 TILLAMOOK	\$2,610.00		\$5,433.64		\$8,043.64	\$2,610.00		\$5,433.64		\$8,043.64	\$2,610.00		\$5,433.64		\$8,043.64	\$2,610.00		\$5,433.64		\$8,043.64
1936001993-	000 UMATILLA	\$2,610.00		\$8,315.69		\$10,925.69	\$2,610.00		\$8,315.69		\$10,925.69	\$2,610.00		\$8,315.69		\$10,925.69	\$2,610.00		\$8,315.69		\$10,925.69
1936002313-	000 UNION	\$2,610.00		\$5,375.41		\$7,985.41	\$2,610.00		\$5,375.41		\$7,985.41	\$2,610.00		\$5,375.41		\$7,985.41	\$2,610.00		\$5,375.41		\$7,985.41
1936002314-	WALLAWA	\$2,610.00		\$4,045.55		\$6,655.55	\$2,610.00		\$4,045.55		\$6,655.55	\$2,610.00		\$4,045.55		\$6,655.55	\$2,610.00		\$4,045.55		\$6,655.55
1936002315-	001 WASCO	\$2,610.00		\$5,986.36		\$8,596.36	\$2,610.00		\$5,986.36		\$8,596.36	\$2,610.00		\$5,986.36		\$8,596.36	\$2,610.00		\$5,986.36		\$8,596.36
1936002316-	013 WASHINGTON	\$2,610.00		\$33,059.33		\$35,669.33	\$2,610.00		\$33,059.33		\$35,669.33	\$2,610.00		\$33,059.33		\$35,669.33	\$2,610.00		\$33,059.33		\$35,669.33
1936002317-	WHEELER	\$2,610.00		\$6,123.52		\$8,733.52	\$2,610.00		\$6,123.52		\$8,733.52	\$2,610.00		\$6,123.52		\$8,733.52	\$2,610.00		\$6,123.52		\$8,733.52
1936002318-	013 YAMHILL	\$2,610.00		\$11,180.70		\$13,790.70	\$2,610.00		\$11,180.70		\$13,790.70	\$2,610.00		\$11,180.70		\$13,790.70	\$2,610.00		\$11,180.70		\$13,790.70
TOTAL		\$88,740.00		\$358,343.49		\$447,083.49	\$88,740.00		\$358,343.49		\$447,083.49	\$88,740.00		\$358,343.49		\$447,083.49	\$88,740.00		\$358,343.49		\$447,083.49

Make checks payable to sherman county hi-county agreement.

AID TO COUNTIES BY YEAR



	A	B	C	K	L	M	N	O	P	Q	R	S	T	U	V	W
1	Descr: CVSO-Curr Qtr-County															
2	22205			AID TO COUNTIES 12-13												
3	AOBJ: 6300			2nd QTR			3rd QTR						4th QTR			
4	COMM: 915-73			SB 1100	DATE PD	TOTAL	BASE AMT	DATE PD	SB 1100	DATE PD	TOTAL	BASE AMT	DATE PD	SB 1100	DATE PD	TOTAL
5	1936002284-		BAKER	\$4,953.07		\$7,563.07	\$2,610.00		\$4,953.07	05/07/12	\$7,563.07	\$2,610.00		\$4,953.07		7,563.07
6	1936002285-	000	BENTON	\$8,440.68		\$11,050.68	\$2,610.00		\$8,440.68	05/07/12	\$11,050.68	\$2,610.00		\$8,440.68		11,050.68
7	1936002286-	000	CLACKAMAS	\$30,949.83		\$33,559.83	\$2,610.00		\$30,949.83		\$33,559.83	\$2,610.00		\$30,949.83		33,559.83
8	1936002287-	039	CLATSOP	\$6,788.86		\$9,398.86	\$2,610.00		\$6,788.86	04/09/12	\$9,398.86	\$2,610.00		\$6,788.86		9,398.86
9	1936002288-	505	COLUMBIA	\$7,798.73		\$10,408.73	\$2,610.00		\$7,798.73	04/25/12	\$10,408.73	\$2,610.00		\$7,798.73		10,408.73
10	1936002289-	051	COOS	\$10,115.01		\$12,725.01	\$2,610.00		\$10,115.01	04/11/12	\$12,725.01	\$2,610.00		\$10,115.01		12,725.01
11	1936002290-	000	CROOK	\$5,147.13		\$7,757.13	\$2,610.00		\$5,147.13	04/16/12	\$7,757.13	\$2,610.00		\$5,147.13		7,757.13
12	1936002291-		CURRY	\$6,224.54		\$8,834.54	\$2,610.00		\$6,224.54		\$8,834.54	\$2,610.00		\$6,224.54		8,834.54
13	1936002292-	052	DESCHUTES	\$15,752.00		\$18,362.00	\$2,610.00		\$15,752.00	05/01/12	\$18,362.00	\$2,610.00		\$15,752.00		18,362.00
14	1936002293-	510	DOUGLAS	\$14,264.74		\$16,874.74	\$2,610.00		\$14,264.74	05/03/12	\$16,874.74	\$2,610.00		\$14,264.74		16,874.74
15	1936002294-	000	GILLIAM	\$3,732.83		\$6,342.83	\$2,610.00		\$3,732.83	04/11/12	\$6,342.83	\$2,610.00		\$3,732.83		6,342.83
16	1936002295-	001	GRANT	\$4,200.13		\$6,810.13	\$2,610.00		\$4,200.13	04/09/12	\$6,810.13	\$2,610.00		\$4,200.13		6,810.13
17	1936002296-	001	HARNEY	\$4,360.81		\$6,970.81	\$2,610.00		\$4,360.81	04/16/12	\$6,970.81	\$2,610.00		\$4,360.81		6,970.81
18	1936002297-	018	HOOD RIVER	\$4,712.44		\$7,322.44	\$2,610.00		\$4,712.44	05/01/12	\$7,322.44	\$2,610.00		\$4,712.44		7,322.44
19	1936002298-	042	JACKSON	\$22,169.10		\$24,779.10	\$2,610.00		\$22,169.10	04/25/12	\$24,779.10	\$2,610.00		\$22,169.10		24,779.10
20	1936002299-	001	JEFFERSON	\$4,990.33		\$7,600.33	\$2,610.00		\$4,990.33	04/25/12	\$7,600.33	\$2,610.00		\$4,990.33		7,600.33
21	1936002300-	000	JOSEPHINE	\$11,776.92		\$14,386.92	\$2,610.00		\$11,776.92	04/25/12	\$14,386.92	\$2,610.00		\$11,776.92		14,386.92
22	1936002301-	048	KLAMATH	\$9,640.73		\$12,250.73	\$2,610.00		\$9,640.73	05/01/12	\$12,250.73	\$2,610.00		\$9,640.73		12,250.73
23	1936002302-		LAKE	\$4,265.33		\$6,875.33	\$2,610.00		\$4,265.33	04/09/12	\$6,875.33	\$2,610.00		\$4,265.33		6,875.33
24	1936002303-	053	LANE	\$30,420.44		\$33,030.44	\$2,610.00		\$30,420.44	05/01/12	\$33,030.44	\$2,610.00		\$30,420.44		33,030.44
25	1936002304-	505	LINCOLN	\$8,118.54		\$10,728.54	\$2,610.00		\$8,118.54	05/01/12	\$10,728.54	\$2,610.00		\$8,118.54		10,728.54
26	1936002305-		LINN	\$12,321.06		\$14,931.06	\$2,610.00		\$12,321.06	04/25/12	\$14,931.06	\$2,610.00		\$12,321.06		14,931.06
27	1936002306-	000	MALHEUR	\$5,723.87		\$8,333.87	\$2,610.00		\$5,723.87	04/11/12	\$8,333.87	\$2,610.00		\$5,723.87		8,333.87
28	1936002308-	026	MORROW	\$4,355.37		\$6,965.37	\$2,610.00		\$4,355.37	05/01/12	\$6,965.37	\$2,610.00		\$4,355.37		6,965.37
29	1936002309-	074	MULTNOMAH	\$39,562.89		\$42,172.89	\$2,610.00		\$39,562.89	05/01/12	\$42,172.89	\$2,610.00		\$39,562.89		42,172.89
30	1936002311-		SHERMAN	\$3,793.38		\$6,403.38	\$2,610.00		\$3,793.38	04/11/12	\$6,403.38	\$2,610.00		\$3,793.38		6,403.38
31	1936002312-	001	TILLAMOOK	\$5,790.62		\$8,400.62	\$2,610.00		\$5,790.62	04/25/12	\$8,400.62	\$2,610.00		\$5,790.62		8,400.62
32	1936001993-	000	UMATILLA	\$8,762.81		\$11,372.81	\$2,610.00		\$8,762.81	04/25/12	\$11,372.81	\$2,610.00		\$8,762.81		11,372.81
33	1936002313-	000	UNION	\$5,476.25		\$8,086.25	\$2,610.00		\$5,476.25	04/25/12	\$8,086.25	\$2,610.00		\$5,476.25		8,086.25
34	1936002314-		WALLOWA	\$4,287.84		\$6,897.84	\$2,610.00		\$4,287.84	04/16/12	\$6,897.84	\$2,610.00		\$4,287.84		6,897.84
35	1936002315-	001	WASCO	\$5,837.20		\$8,447.20	\$2,610.00		\$5,837.20	04/18/12	\$8,447.20	\$2,610.00		\$5,837.20		8,447.20
36	1936002316-	013	WASHINGTON	\$32,492.97		\$35,102.97	\$2,610.00		\$32,492.97		\$35,102.97	\$2,610.00		\$32,492.97		35,102.97
37	1936002317-		WHEELER	\$3,745.25		\$6,355.25	\$2,610.00		\$3,745.25	04/11/12	\$6,355.25	\$2,610.00		\$3,745.25		6,355.25
38	1936002318-	013	YAMHILL	\$10,590.80		\$13,200.80	\$2,610.00		\$10,590.80	05/01/12	\$13,200.80	\$2,610.00		\$10,590.80		13,200.80
39																
40			TOTAL	\$361,562.50		\$450,302.50	\$88,740.00		\$361,562.50		\$450,302.50	\$88,740.00		\$361,562.50		450,302.50
41	Make checks payable to sherman county tri-county agre															
42																
43																
44																
45																

VET POPULATION 2011 - COUNTY LEVEL POPULATION BY STATE 2010-2040



ODVA does not believe the USDVA VetPop numbers include inmates. We know there are about 2,500 inmates within the Department of Corrections for whom ODVA helps provide services. Some counties have opted to provide services to their local inmates as well, including Multnomah County, Lane County, and Klamath County. There may be more. Because CVSOs are an “opt-in” program, their outreach is based on their own local needs and is their decision not directed by ODVA.

State	Oregon
Gender	(All)
Age Group	(All)

Table 9L: VetPop2011 County-Level Veteran Population by State, 2010-2040

FIPS	County and State	Veterans										
		9/30/2010	9/30/2011	9/30/2012	9/30/2013	9/30/2014	9/30/2015	9/30/2016	9/30/2017	9/30/2018	9/30/2019	9/30/2020
41001	Baker, OR	2,017	1,978	1,959	1,936	1,912	1,887	1,861	1,832	1,801	1,769	1,737
41003	Benton, OR	6,021	5,927	5,810	5,694	5,583	5,480	5,371	5,259	5,150	5,044	4,941
41005	Clackamas, OR	36,337	35,817	35,331	34,848	34,380	33,942	33,499	33,030	32,561	32,091	31,627
41007	Clatsop, OR	4,126	4,161	4,144	4,125	4,107	4,093	4,073	4,047	4,019	3,991	3,963
41009	Columbia, OR	6,000	5,966	5,923	5,874	5,823	5,773	5,721	5,659	5,592	5,520	5,445
41011	Coos, OR	8,383	8,273	8,149	8,018	7,887	7,760	7,630	7,493	7,354	7,216	7,079
41013	Crook, OR	2,474	2,478	2,470	2,458	2,444	2,428	2,408	2,384	2,355	2,324	2,290
41015	Curry, OR	3,109	3,075	3,016	2,955	2,893	2,830	2,767	2,702	2,637	2,573	2,510
41017	Deschutes, OR	15,149	14,910	14,827	14,739	14,654	14,575	14,480	14,367	14,244	14,113	13,977
41019	Douglas, OR	13,513	13,305	13,159	13,004	12,846	12,692	12,526	12,345	12,157	11,966	11,773
41021	Gilliam, OR	251	250	247	244	242	239	237	234	232	230	228
41023	Grant, OR	805	775	759	743	727	711	695	679	663	647	631
41025	Harney, OR	1,019	981	961	942	923	906	889	873	856	839	823
41027	Hood River, OR	1,667	1,675	1,670	1,665	1,658	1,653	1,645	1,635	1,623	1,610	1,597
41029	Jackson, OR	21,958	21,375	20,964	20,551	20,144	19,753	19,375	18,991	18,613	18,244	17,884
41031	Jefferson, OR	2,030	2,060	2,071	2,077	2,079	2,079	2,078	2,072	2,062	2,051	2,039
41033	Josephine, OR	10,086	9,864	9,692	9,512	9,330	9,147	8,969	8,783	8,594	8,405	8,217
41035	Klamath, OR	7,342	7,212	7,059	6,908	6,763	6,628	6,493	6,353	6,215	6,080	5,947
41037	Lake, OR	956	949	933	916	900	884	867	850	833	816	799
41039	Lane, OR	32,113	31,492	30,852	30,208	29,573	28,960	28,354	27,731	27,111	26,497	25,894
41041	Lincoln, OR	5,424	5,329	5,233	5,136	5,041	4,948	4,852	4,751	4,649	4,545	4,442
41043	Linn, OR	12,044	11,913	11,842	11,757	11,667	11,576	11,479	11,366	11,244	11,118	10,988
41045	Malheur, OR	2,532	2,474	2,438	2,404	2,372	2,344	2,315	2,282	2,248	2,214	2,181
41047	Marion, OR	25,179	24,764	24,344	23,914	23,489	23,081	22,682	22,266	21,850	21,437	21,033
41049	Morrow, OR	1,008	1,020	1,020	1,019	1,018	1,016	1,013	1,009	1,004	998	992
41051	Multnomah, OR	47,832	46,435	44,985	43,528	42,086	40,683	39,352	38,020	36,719	35,454	34,230
41053	Polk, OR	7,296	7,233	7,185	7,132	7,077	7,026	6,970	6,903	6,831	6,756	6,678
41055	Sherman, OR	296	291	286	282	276	271	266	260	254	248	242
41057	Tillamook, OR	2,712	2,653	2,584	2,515	2,447	2,382	2,318	2,253	2,188	2,125	2,063
41059	Umatilla, OR	6,237	6,126	6,029	5,932	5,835	5,743	5,657	5,567	5,477	5,388	5,301
41061	Union, OR	2,484	2,489	2,470	2,446	2,418	2,390	2,362	2,331	2,301	2,271	2,241
41063	Wallowa, OR	884	887	879	869	860	850	839	828	816	805	794
41065	Wasco, OR	3,399	3,315	3,241	3,170	3,104	3,042	2,986	2,930	2,877	2,825	2,775
41067	Washington, OR	37,230	36,574	35,923	35,265	34,617	33,996	33,383	32,743	32,107	31,477	30,858
41069	Wheeler, OR	250	247	243	239	234	230	226	221	216	211	206
41071	Yamhill, OR	9,727	9,555	9,442	9,328	9,217	9,113	9,006	8,888	8,767	8,642	8,515
Grand Total		339,891	333,824	328,138	322,355	316,626	311,111	305,645	299,934	294,223	288,540	282,939

FY 2005 COUNTY BASELINE AMOUNT / COUNTY MATCH



	FY 2005 County Baseline Amount	FY 2012 County Match
BAKER	\$ 29,515	\$42,082
BENTON	\$ 73,648	83,870.28
CLACKAMAS	\$ 54,764	\$357,381
CLATSOP	\$ 6,200	\$6,200
COLUMBIA	\$ 10,725	\$26,922
COOS	\$ 53,246	53,245.96
CROOK	\$ 21,541	92,895
CURRY	\$ 15,871	31,466
DESCHUTES	\$ 140,657	190,418
DOUGLAS	\$ 114,000	126,270.80
GILLIAM	\$ 900	4,200
GRANT	\$ 1,414	6,212
HARNEY	\$ 2,928	27,694
HOOD RIVER	\$ 23,891	26,635
JACKSON	\$ 133,188	376,500
JEFFERSON	\$ 7,196	18,033
JOSEPHINE	\$ 11,540	86,700
KLAMATH	\$ 132,210	267,350
LAKE	\$ 15,861	15,861
LANE	\$ 132,690	296,926
LINCOLN	\$ 30,671	122,242.84
LINN	\$ 76,206	167,805.76
MALHEUR	\$ 9,975	23,964
MORROW	\$ 5,483	7,286
MULTNOMAH	\$ 105,531	189,416.66
SHERMAN	\$ 3,749	4,200
TILLAMOOK	\$ 46,034	121,000
UMATILLA	\$ 91,575	123,084
UNION	\$ 31,459	78,048
WALLOWA	\$ 6,594	21,229
WASCO	\$ 17,736	56,097.05
WASHINGTON	\$ 252,123	564,409.12
WHEELER	\$ 936	4,200
YAMHILL	\$ 58,937	120,087
TOTAL	\$ 1,718,994	\$3,735,730.09

COUNTY ACTIVITY REPORT



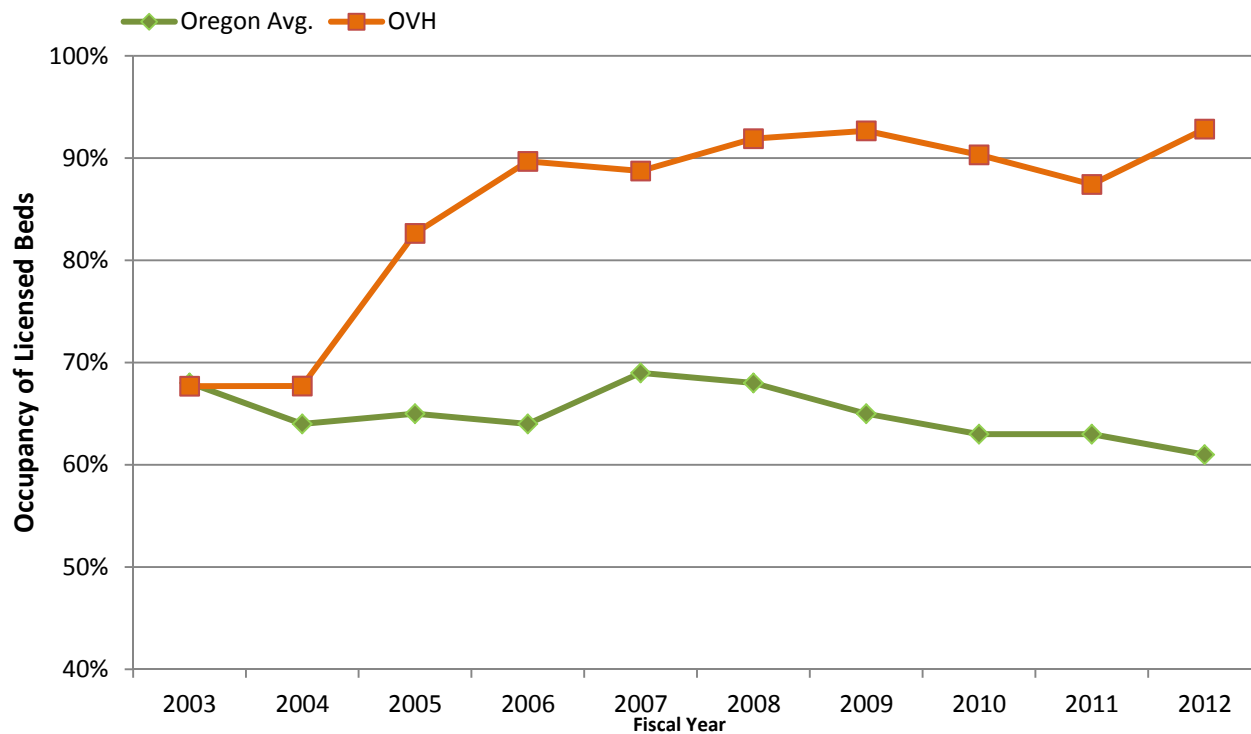
FINAL County Activity Comparison 011513.xlsx [Read-Only] - Microsoft Excel

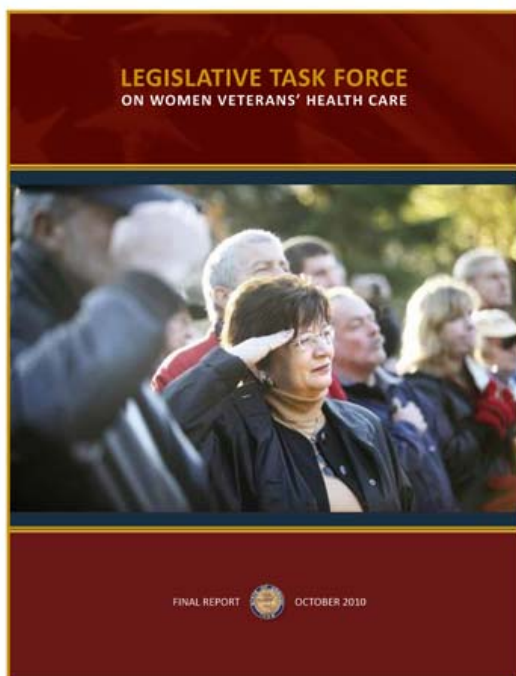
Baker County						
2005-2006						
	4th	3rd	2nd	1st	Totals	
Interviews	141	108	84	94	427	
Filed	10	14	6	5	35	
Granted	8	7	0	6	21	
Denied	1	0	0	1	2	
Recoveries	\$79,040.00	\$46,490.00	\$23,443.00	\$11,852.00	\$160,825.00	
2006-2007						
	4th	3rd	2nd	1st	Totals	
Interviews	98	92	129	15313	15632	
Filed	11	9	16	13	49	
Granted	20	10	13	9	52	
Denied	2	1	3	2	8	
Recoveries	\$103,255.00	\$192,843.00	\$59,200.00	\$99,564.00	\$454,862.00	

Ready | 100%



There was some confusion about the Veterans' Home and private Nursing Homes. The slide that showed OVH in orange is **The Oregon Veteran Home's historical census**. The green line shows the **average private nursing home census**, which showed that private nursing homes have not been able to fill their beds while the OVH has been.





ODVA has completed a Woman Veterans Task Force. The Final Report can be found here:

http://www.oregon.gov/odva/TASKFORCE/docs/LegislativeTF_Women_sm.pdf

