

HB 4090

A Decade of Jobs & Growth

MEASURE: 3 HB 4090
EXHIBIT: 3
2012 SPECIAL SESSION HAG & NAT RES.
DATE: 2/9/2012 PAGES: 11
SUBMITTED BY: Rep. Snodgrass

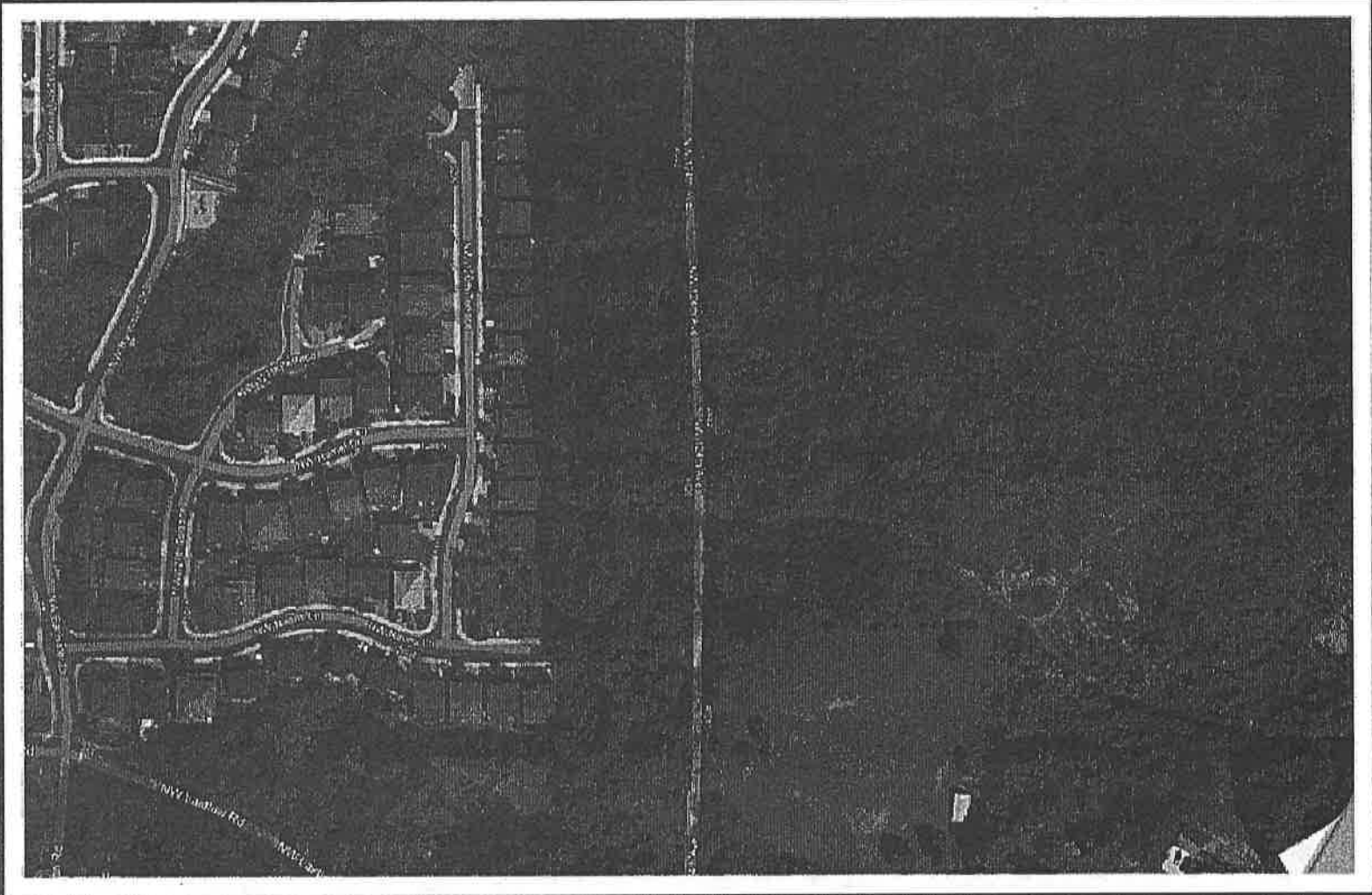
Developable Land Inside the Urban Growth Boundary is Locked-up. Services Unavailable Due

- Geographic **to:** impediment
- Expense of reaching area
- Political barriers
- Failed annexation measures

The Solution?
No More Imaginary
Lines.



Imaginary Lines
Between Counties



Imaginary Lines

You can't get service here.



Imaginary Lines
Outside a City Boundary

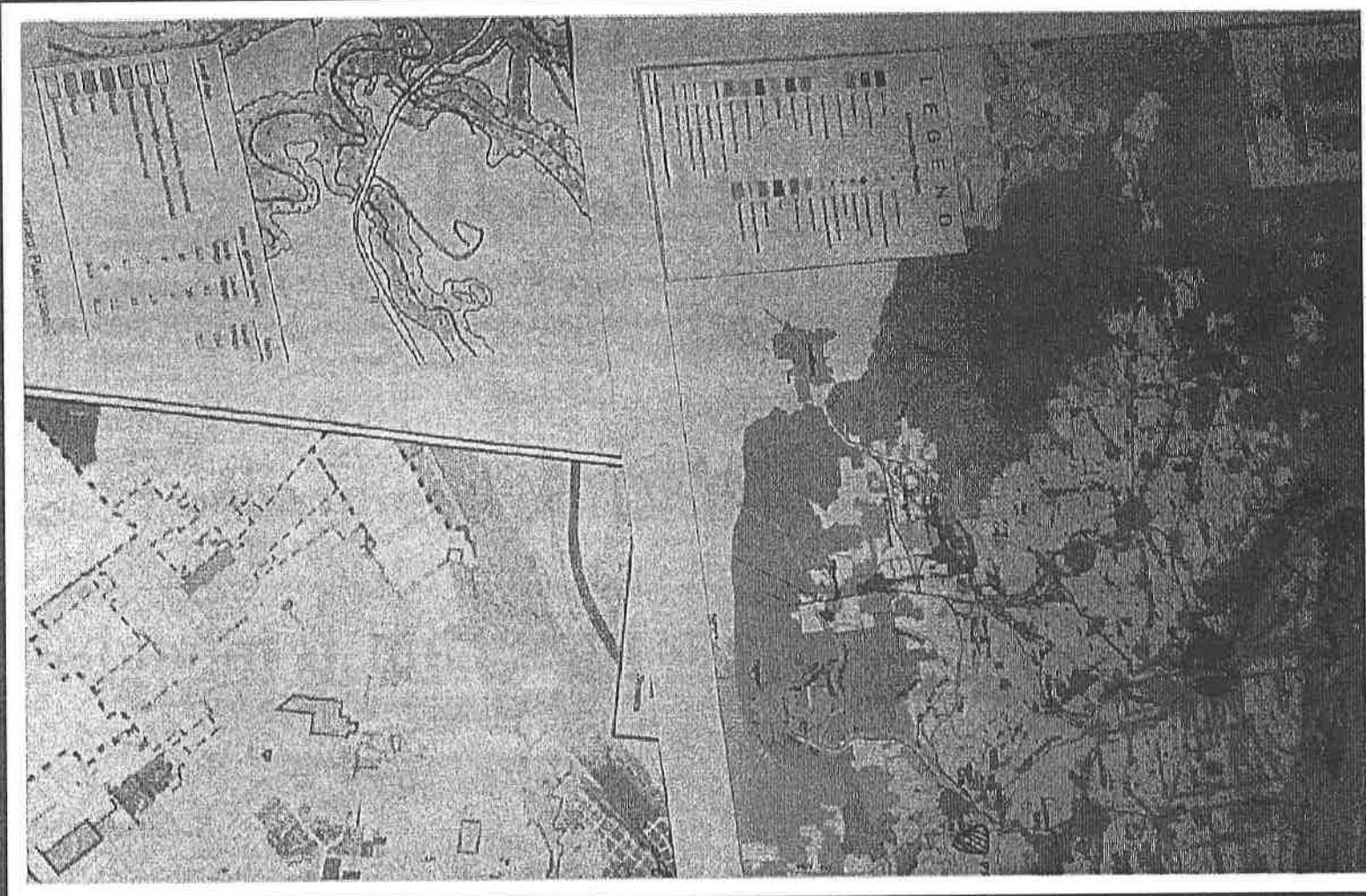
Simple Solution:

- If it's adjacent to existing services ...
- The developer pays 100% of all expenses ...
- The service provider has capacity ...
- The developer waives right to object to future annexation ...

Connect & Build!

What About a Plan?

It's there.



Plans Exist

Metro / County / Private Investment Substantial

A Common Sense Approach

- Growth is already planned
- Governments cooperating across boundaries
- Property owners able to use their land as intended
- No more imaginary lines

Hundreds of Jobs.

