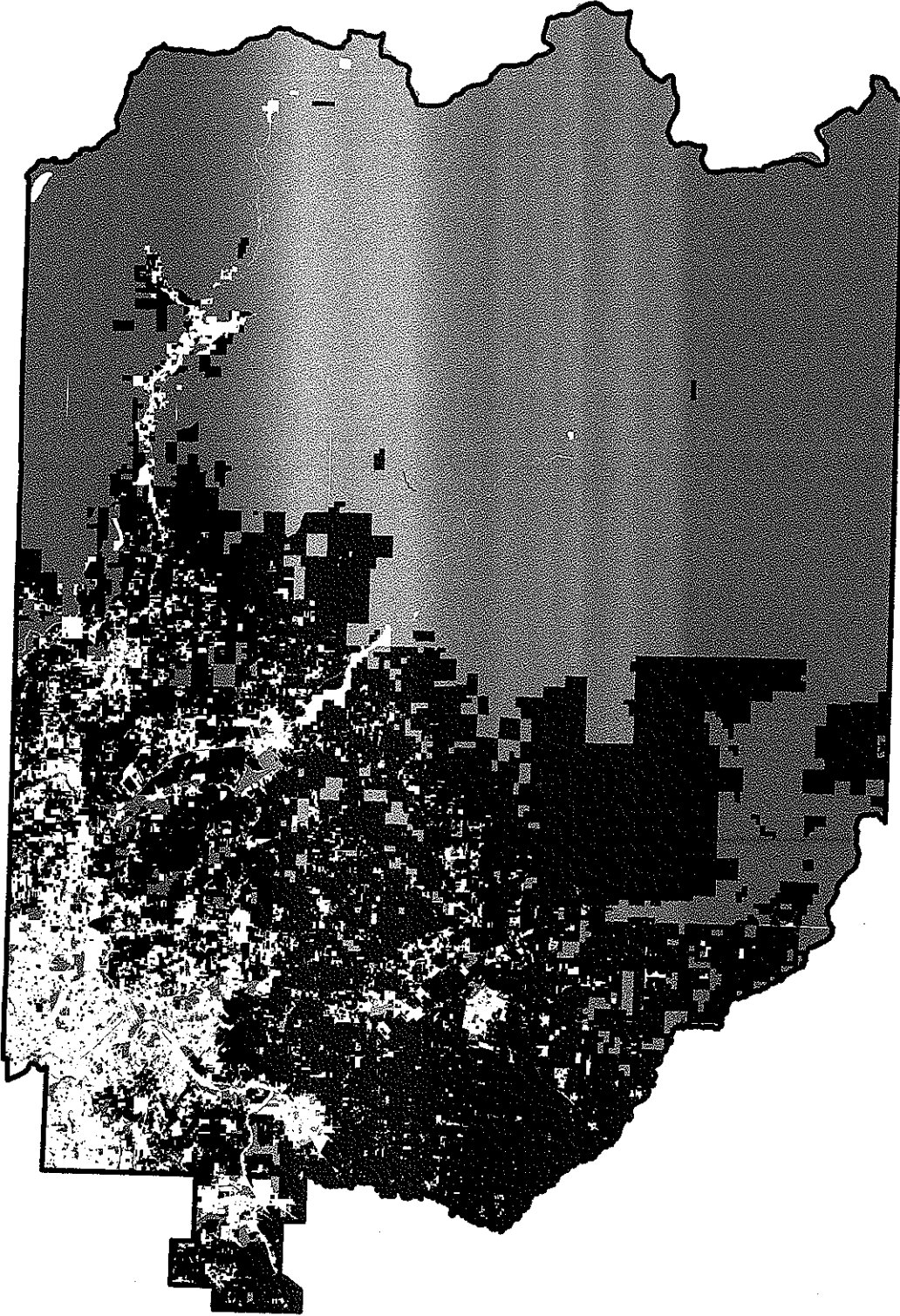


Clackamas County Tax Exempt and Special Assessment Property



MEASURE: HB 3626
EXHIBIT: 0
HOUSE REVENUE COMMITTEE
DATE: 6/7/2011 PAGES: 1
SUBMITTED BY: BOB VROMAN



1:480,000

Exempt and Deferred Tax Parcels

	Tax Exempt
	Farm/Forest Deferral